



## U.S. Fish & Wildlife Service

# Hirsch Unit



## Trinity River National Wildlife Refuge Hunting Regulations 2021–2022

### Welcome

Trinity River National Wildlife Refuge was established on January 4, 1994 with an initial purchase of 4,400 acres (18 km<sup>2</sup>). Since that time, the refuge has acquired additional acreage which now totals 30,000 acres (120 km<sup>2</sup>). The primary purpose of establishing this refuge is to protect a portion of the bottomland hardwood forest ecosystem along the Trinity River located in southeastern Texas. The refuge, which is a remnant of what was once a much larger natural area is a broad flat floodplain made up of numerous sloughs, oxbow lakes, artesian wells, and tributaries.

### Driving Directions:

Hirsch Unit (GPS: 30.219785, -94.793946)

From the intersection of Hwy 146 Bypass and Hwy 146 (near Walmart) in Liberty: Head northeast on Hwy 146 for 1.2 miles. Turn left on to FM 1011 and follow for 5.4 miles. Turn left (west) onto FM 834/ FM1011 and continue for 1.9 miles. Veer left and continue onto CR 2095 for 1.3 miles. At the stop sign turn left onto CR 2096 and follow for 1.6 miles. Turn right (north) onto CR 2503 and follow for 0.4 miles to the parking lot at the end. Park in the parking lot.

From the intersection of Hwy 321 and Hwy 105 (south of Cleveland): Head east 16.7 miles on Hwy 105 to the intersection of Hwy 105 and HWY 146. Turn south (turn right) onto Hwy 146. Head south 1.9 miles on Hwy 146 to CR 2097. Slight right at CR 2097 and continue for 0.7 miles. Continue onto CR 2094 for 0.5 miles. Turn right at CR 2096 and continue for 2.5 miles. Turn right at CR 2503 and follow for 0.4 miles until you reach the end of the road. Park in parking lot.

**Trinity River National Wildlife Refuge**  
601 FM 1011  
Liberty, TX 75755  
936-336-9786

[www.fws.gov/refuge/Trinity\\_River](http://www.fws.gov/refuge/Trinity_River)  
For State relay service TTY/Voice: 711

August 2021

### General Information

Equal opportunity to participate in and benefit from programs and activities of the U.S. Fish and Wildlife Service is available to all individuals regardless of physical or mental ability. Hunters with disabilities, please contact the refuge for alternative hunting opportunities.

### Safety

All units are bottomland hardwood forests, subject to flooding from the Trinity River and may be closed upon short notice. Have cell phone, compass or GPS unit for safety. Alligators, venomous snakes, poison ivy, and fire ants are present. Minimum distance between hunt parties is 200 yards. Big Game and Upland Game hunters must visibly wear 400 square inches of hunter orange above the waist AND a SOLID orange hat or cap. Liberty County Sheriff's Office non-emergency #936-336-4500.

### Firearms

Persons possessing, transporting, or carrying firearms on National Wildlife Refuge System lands must comply with all provisions of State and local law. Persons may only use (discharge) firearms in accordance with refuge regulations (50 CFR 27.42 and specific refuge regulations in 50 CFR Part 32).

### Vehicles

We permit licensed motor vehicles only on public use roads as shown on the map. Hunters with disabilities may use ATVs and UTVs with a special-use permit.

### Hunting Regulations

Hunting regulations are designed to provide safe recreational opportunities through wise use of renewable wildlife resources. Hunting is permitted in accordance with Federal regulations governing public use on National Wildlife Refuges as set forth in Title 50 of the Code of Federal Regulations.

Hunting will be in accordance with applicable State of Texas regulations subject to the conditions stated below. Brochures available by mail, at the refuge headquarters, or from the refuge website.

### Access

**WHEN:** We allow hunting from ½ hour before sunrise to ½ hour after sunset. Hunters MUST be off unit within 1/2 hours after sunset. We allow scouting 5 days before any season starts. We allow the use of non-motorized carts or wagons.

**WHERE:** Hunt within the confines of the boundary as defined by the map, signs, and boundary paint. Enter and park in designated areas only, near the entrance gate as shown on map.

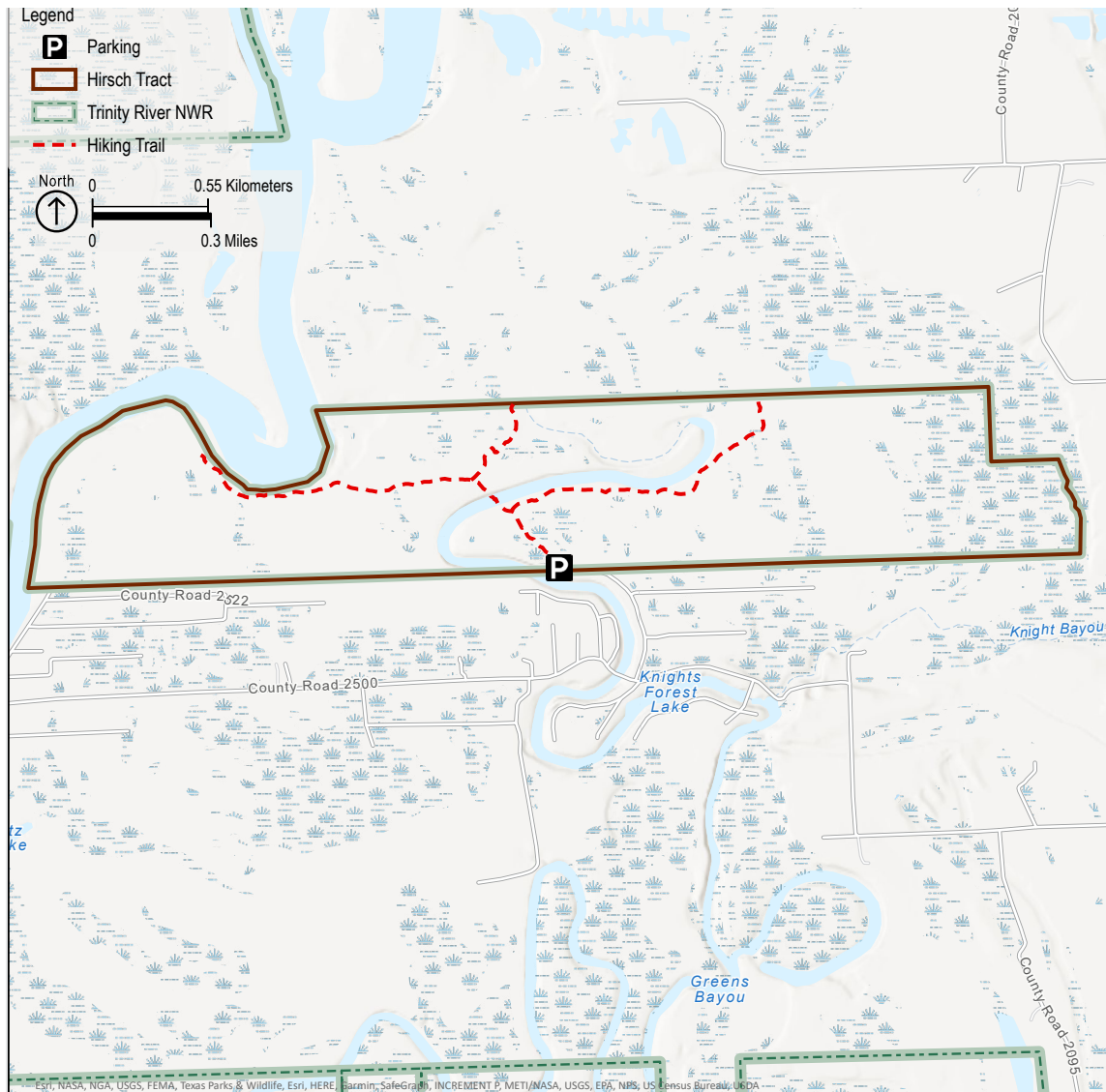
### Big Game Applications

Required applications for Big Game Hunt permits available online through Texas Parks and Wildlife Public Drawn Hunt System ([https://tpwd.texas.gov/huntwild/hunt/public/public\\_hunt\\_drawing/](https://tpwd.texas.gov/huntwild/hunt/public/public_hunt_drawing/)).

### Tree Stands

Permit holders may set up portable blinds, and non-damaging climbing stands during the designated scouting week before the hunt. Maximum one blind or stand per permit. Blinds/stands must be VISIBLY labeled on outside with name of permit holder. The refuge is not responsible for anything left on the property overnight.

# Hirsch Unit



## Prohibited Activities

- Hunting weapons during designated scouting week
- Hunting and erection of blinds or stands WITHIN 300 feet of TRAILS, ROADS, POWER LINES, PIPE LINES, FENCES, and BOUNDARY LINES
- Driving nails, spikes, or other metal objects into trees
- Use of paint, reflectors, flagging, or other substances for marking
- Dogs for Big Game and Upland Hunting
- Feeders, bait, and chemical attractants
- Hunting from trees that require removing branches greater than one inch in diameter
- Clearing or cutting any live vegetation for a shooting lane
- Cutting of any cypress tree limbs
- Open fires, pits, campsites, or drones
- All-terrain vehicles, bicycles, motorcycles, dirt bikes, horses
- Field dressing harvested game in parking lots
- Use, possession, or being under the influence of alcohol while hunting, accessing or returning from hunting
- Removal, disturbance, or collection of any plant or animal material, including frogs and turtles, without a permit or license
- Entry (by boat, kayak, canoe, or walking) within 200 yards of an established bird rookery from March 1 through June 30 on any refuge tract
- Feeding of alligators and other wildlife
- Bow fishing, trotlines, setlines, gigs, spears, fish traps, crawfish/crab nets or any other traps or nets
- Wading, swimming, waterskiing, personal watercraft (PWC/Jet Skis), or airboats on refuge waterways

Type of Hunt	Season	Permit Fee	Special Regulations
<b>Archery Deer</b>	October: 23-day mini-season	\$130	State Regulations apply. Incidental take of feral hog. See TPWD Drawn Hunts to apply.
<b>General Gun Deer</b>	November: 9-day mini-seasons	\$130	State Regulations apply. Incidental take of feral hog. See TPWD Drawn Hunts to apply.
<b>Muzzleloader Deer</b>	January: 14-day mini-season	\$130	State Regulations apply. Incidental take of feral hog. See TPWD Drawn Hunts to apply.