



## U.S. Fish & Wildlife Service

# Brierwood Unit



## Trinity River National Wildlife Refuge Hunting Regulations 2021–2022

### Welcome

Trinity River National Wildlife Refuge was established on January 4, 1994 with an initial purchase of 4,400 acres (18 km<sup>2</sup>). Since that time, the refuge has acquired additional acreage which now totals 30,000 acres (120 km<sup>2</sup>). The primary purpose of establishing this refuge is to protect a portion of the bottomland hardwood forest ecosystem along the Trinity River located in southeastern Texas. The refuge, which is a remnant of what was once a much larger natural area is a broad flat floodplain made up of numerous sloughs, oxbow lakes, artesian wells, and tributaries.

### Driving Directions:

Brierwood Unit (GPS: 30.264619, -94.837469)

From the intersection of Hwy 146 & Hwy 105 (Moss Hill): Head west 6.5 miles on Hwy 105 to CR 2305 (across from the Preserve of Texas). Head south (turn left) on CR 2305 for .3 miles to CR 2306. Head east (turn left) on CR 2306 for 2.0 miles to the parking area. When you reach the end of the road you have arrived at the Brierwood Parking area.

From the intersection of Hwy 321 and Hwy 105 (south of Cleveland): Head east 10.2 miles on Hwy 105 to CR 2305 (across from the Preserve of Texas). Head south (turn right) on CR 2305 for .3 miles to CR 2306. Head east (turn left) on CR 2306 for 2.0 miles to the parking area. When you reach the end of the road you have arrived at the Brierwood Parking area.

**Trinity River National Wildlife Refuge**  
601 FM 1011  
Liberty, TX 75755  
936-336-9786

[www.fws.gov/refuge/Trinity\\_River](http://www.fws.gov/refuge/Trinity_River)  
For State relay service TTY/Voice: 711

August 2021

### General Information

#### Safety

All units are bottomland hardwood forests, subject to flooding from the Trinity River and may be closed upon short notice. Have cell phone, compass or GPS unit for safety. Alligators, venomous snakes, poison ivy, and fire ants are present. Minimum distance between hunt parties is 200 yards. Big Game and Upland Game hunters must visibly wear 400 square inches of hunter orange above the waist AND a SOLID orange hat or cap. Liberty County Sheriff's Office non-emergency #936-336-4500.

#### Firearms

Persons possessing, transporting, or carrying firearms on National Wildlife Refuge System lands must comply with all provisions of State and local law. Persons may only use (discharge) firearms in accordance with refuge regulations (50 CFR 27.42 and specific refuge regulations in 50 CFR Part 32).

#### Vehicles and Boats

We permit licensed motor vehicles only on public use roads as shown on the map. The refuge allows kayaks and canoes in Gaylor Lake. Watercraft must be carried in by foot.

#### Hunting and Fishing Regulations

Hunting and fishing regulations are designed to provide safe recreational opportunities through wise use of renewable wildlife resources. Hunting and fishing are permitted in accordance with Federal regulations governing public use on National Wildlife Refuges as set forth in Title 50 of the Code of Federal Regulations."

Hunting and fishing will be in accordance with applicable State of Texas regulations subject to the conditions stated below. Brochures available by mail, at the refuge headquarters, or from the refuge website.

#### Access

**WHEN:** We allow hunting from ½ hour before sunrise to ½ hour after sunset. Hunters MUST be off unit within 1/2 hours after sunset. We allow scouting 5 days before any season starts. We allow the use of non-motorized carts or wagons.

**WHERE:** Hunt within the confines of the boundary as defined by the map, signs, and boundary paint. Enter and park in designated areas only, near the entrance gate as shown on map.

#### Big Game Applications

Required applications for Big Game and Upland Game Hunt permits available online through Texas Parks and Wildlife Public Drawn Hunt System ([https://tpwd.texas.gov/huntwild/hunt/public/public\\_hunt\\_drawing/](https://tpwd.texas.gov/huntwild/hunt/public/public_hunt_drawing/)).

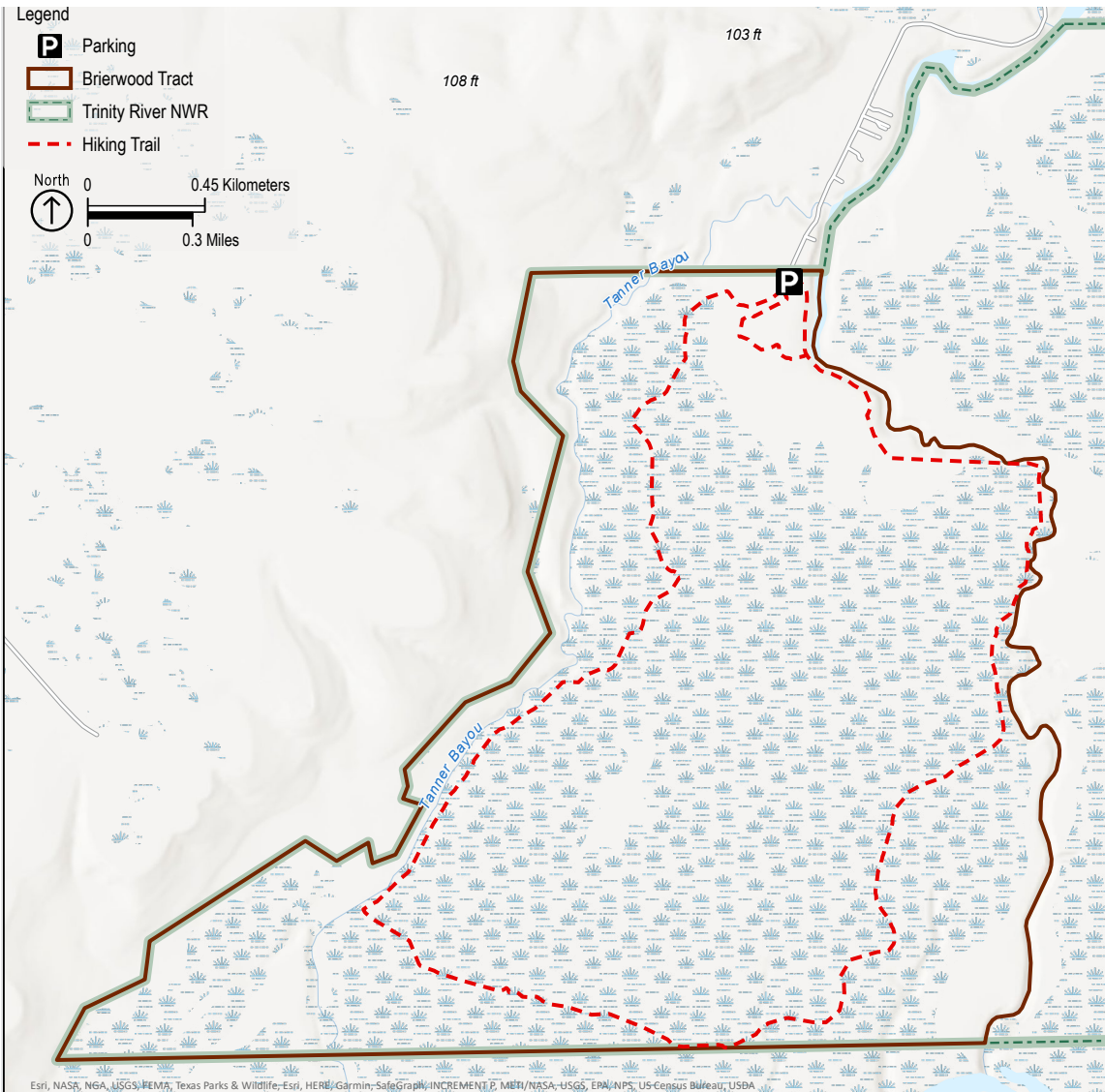
#### Tree Stands

Permit holders may set up portable blinds, and non-damaging climbing stands during the designated scouting week before the hunt. Maximum one blind or stand per permit. Blinds/stands must be VISIBLY labeled on outside with name of permit holder. The refuge is not responsible for anything left on the property overnight.

#### Specific fishing regulations

Fishing allowed from sunrise to sunset, year-round, with pole and line, rod and reel, or hand-held line except during special hours of operation while duck hunting is in progress.

# Brierwood Unit



## Prohibited Activities

- Hunting weapons during designated scouting week
- Hunting and erection of blinds or stands WITHIN 300 feet of TRAILS, ROADS, POWER LINES, PIPE LINES, FENCES, and BOUNDARY LINES
- Driving nails, spikes, or other metal objects into trees
- Use of paint, reflectors, flagging, or other substances for marking
- Dogs for Big Game and Upland Hunting
- Feeders, bait, and chemical attractants
- Hunting from trees that require removing branches greater than one inch in diameter
- Clearing or cutting any live vegetation for a shooting lane
- Cutting of any cypress tree limbs
- Open fires, pits, campsites, or drones
- All-terrain vehicles, bicycles, motorcycles, dirt bikes, horses
- Field dressing harvested game in parking lots
- Use, possession, or being under the influence of alcohol while hunting, accessing or returning from hunting
- Removal, disturbance, or collection of any plant or animal material, including frogs and turtles, without a permit or license
- Entry (by boat, kayak, canoe, or walking) within 200 yards of an established bird rookery from March 1 through June 30 on any refuge tract
- Feeding of alligators and other wildlife
- Bow fishing, trotlines, setlines, gigs, spears, fish traps, crawfish/crab nets or any other traps or nets
- Wading, swimming, waterskiing, personal watercraft (PWC/Jet Skis), or airboats on refuge waterways

Type of Hunt	Season	Permit Fee	Special Regulations
<b>Archery Deer</b>	October: 23-day mini-season	\$130	State Regulations apply. Incidental take of feral hog. See TPWD Drawn Hunts to apply.
<b>General Gun Deer</b>	November: 9-day mini-seasons	\$130	State Regulations apply. Incidental take of feral hog. See TPWD Drawn Hunts to apply.
<b>Muzzleloader Deer</b>	January: 14-day mini-season	\$130	State Regulations apply. Incidental take of feral hog. See TPWD Drawn Hunts to apply.