

# Tishomingo

## National Wildlife Refuge and Wildlife Management Unit Hunting Regulations



### Welcome

Tishomingo National Wildlife Refuge was established in 1946 as an overlay of part of Lake Texoma in south-central Oklahoma. Habitat within the 16,464 acre refuge is managed for a variety of birds and other wildlife.

Regulations and types of hunting activities permitted differ between Tishomingo National Wildlife Refuge and the Wildlife Management Unit (WMU). The WMU is managed through a U.S. Fish and Wildlife Service partnership with the Oklahoma Department of Wildlife Conservation (ODWC) and follows Oklahoma State regulations.

### Accessibility

Equal opportunity to participate in and benefit from programs and activities of the U.S. Fish and Wildlife Service is available to all individuals regardless of physical or mental ability. For more information please contact the U.S. Department of the Interior, Office of Equal Opportunity, <https://www.doi.gov/pmb/eeo/public-civil-rights>.

### Safety

Portions of the refuge do not have cell phone coverage. Venomous snakes along with a variety of biting and stinging insects may be present on the refuge and WMU.

### Firearms

Persons possessing, transporting, or carrying firearms on National Wildlife Refuge System lands must comply with all provisions of State and local law. Persons may only use (discharge) firearms in accordance with refuge regulations (50 CFR 27.42 and specific refuge regulations in 50 CFR Part 32).

### Vehicles

Vehicle access is allowed on designated roadways year-round, except during muzzleloader and gun deer seasons on the WMU. No off-road driving is permitted. ATVs, UTVs, and ORVs are prohibited.

### Boats

The Washita River is open to boating year-round for fishing and to provide hunting access to Refuge Unit 21. The nearest location for hunters to reach the refuge and the wetlands located in Refuge Unit 21 is via the Washita River and the boat ramps located at Butcher Pen. Refuge Unit 21 is also accessible using Bell Creek Road, Linn Cemetery Road or Right Avenue and Soward Drive.

### Hunting Regulations

Hunting regulations are designed to provide safe recreational opportunities through wise use of renewable wildlife resources. Hunting is allowed in accordance with Federal regulations governing public use on National Wildlife Refuges as set forth in Title 50 of the Code of Federal Regulations.

Hunting will be in accordance with applicable State of Oklahoma regulations subject to the conditions stated below.

### Access

WHEN: Hunting on the WMU follows Oklahoma State regulations. Hunting on the refuge is available through controlled hunts, which you can apply for at <https://gooutdoorsoklahoma.com>.

WHERE: The WMU is accessible to vehicles by roads.

### Tree Stands

Per Oklahoma State regulations, hunting is from stands, blinds, or stalking (still hunting) only. Only portable or temporary stands are allowed (one per hunter) and must be removed at the close of the hunt segment. Stands may remain in place no more than 14 days in the Wildlife Management Unit. Federal and State regulations prohibit baiting on the refuge or the WMU.

### Harvest Reporting

In addition to meeting statewide harvest reporting, hunters must sign in and out on a daily basis at hunt sign-in points indicated on the map regardless of whether they were successful or not.

### Tishomingo National Wildlife Refuge Hunting Authorization

When signed and carried, this authorization will serve as your general acknowledgement of rules for this season. This authorization is only valid when signed below and must be carried with you at all times while on the refuge.

Expires August 31 of the following year

---

Signature (authorizations are not transferable)

### Prohibited Activities

- Baiting and/or hunting over bait
- Use or possession of lead shot
- Searching for, collecting, or removal of artifacts, antiquities or natural items.
- All plants and animals are protected and should not be disturbed or collected (except for fish and wildlife legally taken during hunting and fishing seasons).
- Camping is permitted at designated camp sites with a 14 day occupancy limit.
- Fires permitted only at designated areas, no ground fires.
- Target shooting.
- Swimming and water skiing.
- Trail monitoring devices/game cameras.
- Horses are prohibited on the refuge. Consult the state for the Wildlife Management Unit.
- Access through private property.

11766 South Refuge Road  
Tishomingo, OK 73460

580-371-2402

U.S. Fish & Wildlife Service  
1-800-344-WILD

August 2023



# National Wildlife Refuge Hunting Regulations

(see next page for Wildlife Management Unit Regulations)

## Open to All Hunters

Activity	Season	Harvest	Areas	Other Regulations
<b>Waterfowl</b>	Variable, per state season dates	Waterfowl per state regulations	Unit 2, area closed north of the airport access road Unit 21	State licenses and appropriate stamps are required, waterfowl hunting closes at 1:00 pm. Only Federally approved non-toxic shot may be used. Methods of take are in alignment with the state. State regulations apply.

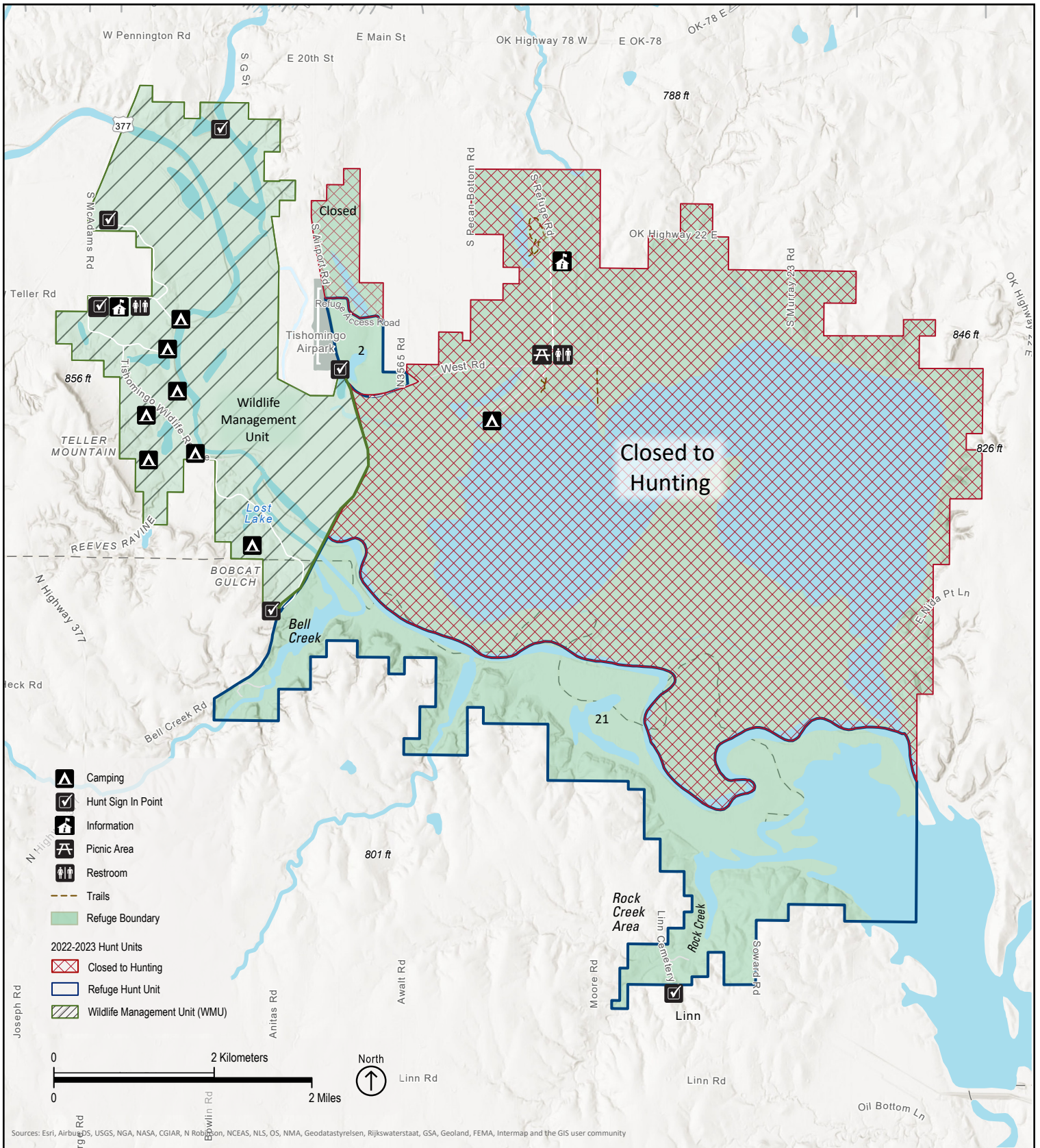
## Controlled Hunt - Hunters Must Apply through ODWC

Activity	Season	Harvest	Areas	Other Regulations
<b>Deer Archery</b>	November	Max one deer of either sex and one antlerless whitetail	Unit 21	Controlled hunt, must apply through ODWC hunt lottery system.
<b>Deer Rifle</b>	Youth hunt – October Non-ambulatory – November General – December	Max one deer of either sex and one antlerless whitetail	Refuge lands situated north of the Washita River excluding the delta and east of Airport Road	Controlled hunt, must apply through ODWC hunt lottery system. All hunts are “earn a buck”. Hunt orientation will be held prior to hunt. Only centerfire rifles may be used.
<b>Turkey</b>	April	One tom turkey	Locations received at hunt orientation	Controlled hunt, must apply through ODWC hunt lottery system. Hunt orientation will be held prior to hunt. May use archery equipment or shotgun. Only federally approved non-toxic shot may be used.
<b>Feral Hogs</b>	Allowed during all refuge controlled hunts	Unlimited	Areas identified as having a hunt in progress	Must be actively participating on a refuge controlled hunt. Weapon must match the specific hunt that hunter is participating in.

# Wildlife Management Unit (WMU) Hunting Regulations

Activity	Season	Harvest	Other Regulations
<b>Waterfowl</b>	Variable, per state season dates	Migratory birds per state regulations	State licenses and appropriate stamps are required, waterfowl hunting closes at 1:00 pm. Only Federally approved non-toxic shot may be used. Methods of take are in alignment with the state.
<b>Deer</b>	Variable, per state season dates	Per state regulations	State regulations apply. Method of take is variable and may include center-fire rifle, shotgun, handgun, muzzleloader and archery equipment. Federally approved non-toxic shot is mandatory for all shotgun hunting except for single slugs. Rifle hunters are not required to use non-toxic bullets.
<b>Turkey</b>	Variable, per state season dates	One tom turkey	Federally approved non-toxic shot is mandatory for all shotgun hunting regardless of species being hunted.
<b>Feral Hogs</b>	Allowed year round	Unlimited	May be taken with various weapons (shotgun, archery, rifle) with methods authorized for that hunting season. No feral hogs may be removed alive from the WMU. Pursuing with hounds is prohibited.
<b>Furbearers &amp; Predators</b>	Allowed per season days except closed during the first nine days of deer gun season.	Per state regulations	Pursuing with hounds or trapping is prohibited.
<b>Dove and other migratory birds</b>	Allowed per season dates	Per state regulations	Federally approved non-toxic shot is mandatory for all shotgun hunting regardless of species being hunted.
<b>State regulations apply except where noted. Entire unit is open to hunting.</b>			





Sources: Esri, Airbus/DS, USGS, NGA, NASA, CGIAR, N Robinson, NCEAS, NLS, OS, NMA, Geodatastyrelsen, Rijkswaterstaat, GSA, Geoland, FEMA, Intermap and the GIS user community

**Hunt map of Tishomingo National Wildlife Refuge including Wildlife Management Unit showing hunt units and closed areas**