



## U.S. Fish & Wildlife Service

# Theodore Roosevelt

## National Wildlife Refuge Complex Public Use Regulations 2022–2023

### Bayou Cocodrie, Hillside, Holt Collier, Mathews Brake, Morgan Brake, Panther Swamp, St. Catherine Creek, Theodore Roosevelt and Yazoo NWRs

#### Welcome

Refuges are located south of State Highway 82 in the South Delta of Mississippi in the Lower Mississippi River Valley. Refuges are located from just south of Greenville, down towards Vicksburg, over to Yazoo City, and back up to Greenwood. TR Complex consists of nine Refuges, Bayou Cocodrie, Hillside, Holt Collier, Mathews Brake, Morgan Brake, Panther Swamp, St. Catherine Creek, Theodore Roosevelt, and Yazoo National Wildlife Refuges. All entry is prohibited at Theodore Roosevelt NWR. Resident species making their home among the woodlands, sloughs, and reforested areas include the American alligator, white-tailed deer, swamp rabbit, wild turkey, squirrel, and various small furbearers.

Visitors are encouraged to explore natural resources by way of birding, canoeing, hiking, photography and wildlife observation. TR Complex continually strives to better provide these opportunities. Most trails are open to foot traffic year round, please consult current Refuge regulations and maps in this brochure. Kiosks, on-the-ground signage, and/or TR Complex FB may contain additional information and updates on closures.



This is a unit of the National Wildlife Refuge System, a network of lands and waters managed for the benefit of wildlife and people.

## General Regulations

### Theodore Roosevelt NWR Complex (TR Complex) Annual Public Use Permit (Valid August 1 through July 31 each year)

Each person 16 years of age through 64 years of age must purchase a permit for \$20 plus a \$5 processing fee and possess it if participating in hunting (including calling and/or videoing) or fishing on the TR Complex. This permit is non-refundable, non-transferable, and is required in order to be eligible to apply for TR Complex Limited Draw Hunts. The permit must be in your possession (paper or an electronic copy) whenever hunting or fishing on the refuge and acknowledges your understanding of refuge regulations. In addition, users must possess all applicable state and federal licenses. First time hunters or anglers will need to create an account at RecAccess (<https://trcomplex.recaccess.com>). Once an account is set-up, a TR Complex Annual Public Use Permit can be obtained directly on the RecAccess website and a copy will also be sent to the email address provided in the established RecAccess account. For all technical support, including password resets, contact [support@recaccess.com](mailto:support@recaccess.com).

The TR Complex Annual Public Use Permit is **free** for all youth 15 years of age or under and adults 65 years of age or older. Youth are not required to possess a permit unless participating in a limited draw hunt, other than the Yazoo NWR Youth Hunt, or St. Catherine/Bayou Cocodrie NWRs Turkey Hunts. Seniors (adults 65 years of age or older) are not required to purchase the TR Complex Annual Public Use Permit, however, they must have an established RecAccess account and obtain a free permit in order to fish, hunt or apply for limited draw hunts, including the Yazoo NWR Senior Hunt.

The TR Complex provides a wide variety of wildlife dependent public uses such as hunting, fishing, photography, environmental education, and nature/wildlife observation. **Permits are only required for hunting and fishing.** Visit the national wildlife refuge website at <https://www.fws.gov/refuges/> for more information.

### Daily Visitor Information

All individuals that are either **hunting or fishing** must self-check-in/check-out through the RecAccess online system or by using a Daily Visitor Information Card (refer to map for kiosk location). Information provided on the card must be readable, and the card must be displayed on the vehicle dash for each hunter or angler and submitted prior to leaving the refuge (if the RecAccess self-check-in/check-out is not used). Each individual must check-in/check-out even if participating in a group. All harvested game and fish must be accurately recorded per person. Visitors that are not hunting or fishing are encouraged to check-in/check-out through the RecAccess online system or display and submit a Daily Visitor Information Card.

### Firearms

Persons possessing, transporting or carrying firearms on NWRs must comply with all provisions of state and local law. Persons may only use (discharge) firearms in accordance with refuge regulations (50 CFR 27.42) and specific refuge regulations (50 CFR Part 32).



## U.S. Fish & Wildlife Service

### Closed Areas and Times

Temporary or permanent closure of areas across the TR Complex may occur due to unforeseen circumstances. Please check for on-the-ground signage, check stations, entry points, kiosks, and/or on the TR Complex social media page for updates.

All other public activities on the TR Complex are prohibited during firearm deer hunts and Limited Draw Hunts. Refer to TR Complex Hunt Season Table at the end of the brochure for an updated list of scheduled hunts.

Hillside, Holt Collier, Mathews Brake, Morgan Brake, Panther Swamp, and Yazoo NWRs (including refuge roads, parking areas and boat ramps) are closed 1½ hours after official sunset until 4 am. St. Catherine Creek and Bayou Cocodrie NWRs are closed 2 hours after official sunset until 4 am. When waterfowl hunting is allowed, shooting hours are from ½ hour before sunrise to 12 pm (noon). All decoys, blind material and boats must be removed from the hunt area no later than 1 pm each day.

*Hillside NWR:* All entry into Turkey Point Unit is prohibited from December 15, 2022 through March 1, 2023.

*Mathews Brake NWR:* In addition to refuge hours, beginning the day before waterfowl season opens and ending the last day of waterfowl season (State Youth Hunt), refuge waters are closed to all public use from 1 pm to 4 am each day (see map).

Refuge resumes normal hunting hours during Waterfowl Limited Draw Hunts beginning at 1 pm each day (i.e., archery and small game).

*Panther Swamp NWR:* All entry into Lower Twist and Carter Ponds is prohibited from December 15, 2022 - March 1, 2023.

*St. Catherine Creek NWR:* The Sibley fields are closed to all public entry from November 15, 2022 to March 1, 2023. The Swamp is closed to all boats November 15, 2022 – March 31, 2023.

*Theodore Roosevelt NWR:* All entry is prohibited.

*Yazoo NWR:* All entry into Cox Ponds and adjoining area to the South is prohibited from December 15, 2022 - March 1, 2023.

### Vehicle Access

Vehicles must not obstruct roads, gates, trails, trailheads, turn rows, field access ramps or fire lanes and may only be operated on designated roads (see maps).

All-terrain vehicles (ATVs) and utility vehicles (UTVs/side-by-sides) are approved for use only on Hillside, Morgan Brake, Panther Swamp, and St. Catherine Creek NWRs from September 15 through February 28 and on Bayou Cocodrie NWR from October 15 through February 28 on designated trails.

E-bikes operated in the pedal assist mode are currently authorized where traditional bicycles are allowed.

### Boats

Boats left unattended for more than 72 hours will be considered abandoned and will be subject to removal.

*Yazoo NWR:* Motorized boats are only authorized in Silver Lake Bayou.

*St. Catherine Creek NWR:* Hunters may not access the refuge from public waterways. In the Sibley Unit, only non-motorized boats are allowed north of the Ring Levee of Gilliard Lake. During non-flooded conditions, non-motorized boats may be hand-launched in The Swamp. Boats may be trailer-launched only at designated boat ramps on the refuge.

## General Hunting Information

### Hunting License(s) and Regulations

Unless further restricted by refuge regulations, state bag limits, possession limits and regulations apply to all hunters and anglers. Please consult current Mississippi or Louisiana regulations and refuge regulations outlined in this brochure for details.

*Hillside, Holt Collier, Mathews Brake, Morgan Brake, Panther Swamp, and Yazoo NWRs:* It is unlawful to have a loaded weapon or hunt from or shoot into open agricultural fields and within a 100' zone along either side of pipelines or power line rights-of-way, designated roads, trails or around parking lots.

*St. Catherine Creek and Bayou Cocodrie NWRs:* It is unlawful to hunt within 150' of designated roads, trails, or parking lots, or a petroleum facility. It is unlawful to hunt or shoot within 600' of a refuge residence or any building (see refuge specific maps).

Hogs may be taken only during Refuge Big Game season (deer and turkey) with weapons legal for those hunts.

### Limited Draw Hunts

Theodore Roosevelt NWR Complex Public Use Permits and Limited Draw Hunt Permits/Information are no longer mailed out. Permits will be distributed via email and can be retrieved from each user's RecAccess account. TR Complex Annual Public Use Permit is required in order to be eligible to apply for TR Complex Limited Draw Hunts.

Each person 16 years of age through 64 years of age must purchase a permit for \$20 plus a \$5 processing fee and possess it if participating in hunting (including calling and/or videoing) or fishing on the TR Complex. Limited Draw Hunt applicants must apply online at <https://trcomplex.recaccess.com>. Successful participants will receive an email notification of the results and selectees will receive permits via the email address provided in their RecAccess account. Applicants can check their status by going to RecAccess Draw Results online. Limited Draw Hunt status will not be provided by refuge personnel.

The TR Complex Annual Public Use Permit is **free** for all youth 15 years of age or under and adults 65 years of age or older. Youth must obtain a free permit in order to apply for limited draw hunts,



## U.S. Fish & Wildlife Service

including the Yazoo NWR Youth Hunt and St. Catherine Creek/Bayou Cocodrie NWRs Youth Turkey Hunts.

Seniors (65 years of age or older) are not required to purchase the TR Complex Annual Public Use Permit, but they must obtain a free permit in order to fish, hunt or apply for limited draw hunts, including the Yazoo NWR Senior Hunt.

Applications for Limited Draw Hunts are accepted August 15 – September 30 for all Deer Hunts, September 15 – November 1 for Mathews Brake NWR Waterfowl Hunts and Yazoo NWR Youth Waterfowl Hunt, and January 15 – February 15 for Hillside, St. Catherine Creek, and Bayou Cocodrie NWRs Turkey Hunts.

Only selectees are allowed on the refuge during Limited Draw Hunts. Seniors selected for the Yazoo NWR Senior Citizen Hunt are allowed to have one non-hunter assistant.

### Youth Hunters

All persons under 16 years of age, while hunting on the TR Complex, must be in the presence and under direct supervision of a licensed or exempt hunter at least 21 years of age in Mississippi and 18 years of age in Louisiana. Only one youth can be supervised per licensed and permitted adult.

### Hunter Orange

All deer hunters (including while in the stand) must wear at least 500 square inches of solid unbroken fluorescent orange material visible above the waistline (plus a fluorescent orange hat or cap while at Bayou Cocodrie NWR), from November 5, 2022 – January 31, 2023. During small game season at Bayou Cocodrie NWR, a fluorescent orange hat or cap is required in hunting zones.

Ground blinds must display a minimum of 400 square inches of hunter orange visible from all sides.

Rabbit and quail hunters must follow state regulation regarding hunter orange. At St. Catherine Creek NWR, hunters of upland game (squirrel, rabbit, raccoon, opossum, beaver, nutria, and coyote) must wear a hunter-orange hat and upper garment when hunting in open fields or tree plantations.

### Tree Stands and Blinds

Valid permit holders are allowed to possess and hunt from one portable stand or blind. Identifiable information (e.g., State hunting license number, RAID#, or name/phone number) must be displayed on tree stands or blinds, or they will be subject to removal. A stand or blind **does not** reserve hunting locations. A stand or blind may be placed 48 hours prior to a hunt (not hunt season). Stands or blinds must be used within 48 hours, or they will be considered abandoned and subject to removal.

While climbing a tree, installing a stand that uses climbing aids, or while hunting from a tree stand, hunters must use a fall arrest system that is manufactured to Tree Stand Manufacturers Association Standards.

At *St. Catherine Creek and Bayou Cocodrie NWRs*, wheelchair-accessible blinds are available with advance reservation to mobility-impaired hunters as defined by the state.

### Deer

Deer hunting within or adjacent to brushy fields and tree plantations less than 5 feet in height must be from a stand a minimum of 10 feet above the ground.

*Hillside, Holt Collier, Mathews Brake, Morgan Brake, Panther Swamp, and Yazoo NWRs*: Daily bag limit is one buck and one doe per day not to exceed state season or daily bag limits. Legal bucks are those with an inside spread of at least 15 inches OR one main beam length of at least 18 inches. **This applies to all hunters including youth (except during the Yazoo NWR Youth Hunt).**

*St. Catherine Creek NWR and Bayou Cocodrie NWR*: Daily bag limit is one deer per day, either sex, not to exceed state seasonal bag limits. Legal bucks are those as defined by the state. At Bayou Cocodrie NWR, state tagging regulations apply.

Prior to leaving any refuge, all harvested deer must be checked at a check station (see map). Deer jawbones (including deer intended for mounting - unless permitted by appropriate refuge staff) must be removed, tagged, and placed in drop boxes at appropriate check stations.

State approved archery equipment is allowed.

### Deer Muzzleloader

#### Application period: August 15 - September 30

Only muzzleloaders loaded with a single projectile and archery equipment are allowed. Breech-loading firearms of any type or caliber are prohibited.

*Panther Swamp and Yazoo NWRs*: Limited Draw Hunt. Applicants may apply for only one limited draw deer hunt at <https://trcomplex.recaccess.com>. Up to five applicants per application for Panther Swamp NWR and up to two applicants per application for Yazoo NWR.

*Hillside, Holt Collier and Morgan Brake NWRs*: Open to deer muzzleloader during designated dates.

### Deer Primitive Weapons

*St. Catherine Creek NWR and Bayou Cocodrie NWRs*: Primitive weapons (as defined by the state) and archery equipment are allowed.

### Deer Gun

#### Application period: August 15 - September 30

Shotguns with rifled slugs only, muzzleloading rifles, legal pistols and rifles, and archery equipment are allowed.

*Panther Swamp NWR*: Limited Draw Hunt. Applicants may apply for only one limited draw deer hunt at <https://trcomplex.recaccess.com>. Up to five applicants per application.

### Senior Citizen Deer Gun



## U.S. Fish & Wildlife Service

*Yazoo NWR*: Limited Draw Hunt. Senior Citizens, 65 years of age and older, may apply at <https://trcomplex.recaccess.com>. Up to two applicants per application. Seniors selected for the Yazoo NWR Senior Citizen Hunt are allowed to have one non-hunter assistant.

### Youth Deer Gun

*Yazoo NWR*: Limited Draw Hunt. Youth may apply at <https://trcomplex.recaccess.com>. One applicant per application. Daily bag limit is one buck and one doe per day not to exceed state season or daily bag limits. Youth may harvest any size antlered deer during this hunt only. Only youth can hunt.

### Small Game

Raccoon, opossum, coyote, beaver, bobcat and nutria may be taken during refuge hunts within the state season and limit for each species with weapons authorized for the specified refuge hunt. All hunters using shotguns must use approved non-toxic shot.

Dogs are allowed while hunting squirrel and rabbit during the February rabbit hunts.

*Bayou Cocodrie NWR*: Dogs may only be used within the state period for small game with dogs.

*St. Catherine Creek NWR*: Small game does not include bobcat. Raccoon hunting requires the use of dog(s) and .22 caliber rimfire rifle.

*Hillside, Morgan Brake, and Panther Swamp NWRs*: quail may be taken during refuge hunts with the use of dogs and with weapons authorized by the state. All hunters using shotguns must use approved non-toxic shot.

### Farmers Home Administration (FmHA) Tracts

Deer and rabbit hunting are allowed on the Brown Tracts (east of the Sunflower River).

*Deer Archery*: October 1, 2022 – January 31, 2023

*Rabbit without Dogs*: October 15, 2022 - February 28, 2023

*Rabbit with Dogs*: February 1-28, 2023

### Migratory Birds Limited Draw Hunts

#### (Duck, Goose, Merganser, and Coot)

#### Application period: September 15 – November 1

Migratory game bird hunting is allowed on designated areas (see maps).

Waterfowl hunters are allowed no more than 25 shotshells per person. There is no early teal season.

Retriever dogs are allowed while migratory bird hunting (waterfowl and snow geese).

*Mathews Brake NWR*: Limited Draw Hunt: Applicants may apply for two limited draw duck hunts at <https://trcomplex.recaccess.com>. State season Monday through Friday, except first two days of season.

The Limited Draw Permit is valid for the applicant, who must be present, and up to three additional guests (maximum four per party). Each additional guest must have a TR Complex Annual Public Use Permit. Hunting is allowed only in the designated Waterfowl Hunt Area (see map). One boat per party. All Limited Draw Hunt participants must launch and return to the USFWS boat ramp.

Vehicles waiting in line to launch must be **attended at all times** by a member of the hunt party.

*Yazoo NWR*: Limited Draw Youth Hunt. Youth may apply for only one youth waterfowl hunt at <https://trcomplex.recaccess.com>. One applicant per application. Adults will be allowed to hunt, but they must possess valid license, stamps, and permits. All youth and adult hunters must follow guidelines in the General Regulation Section - Daily Visitor Information Section.

*Yazoo NWR*: Snow Geese may be taken beginning February 1, 2023 during the State Light Goose Conservation Order. Contact the Yazoo NWR office for details.

*Bayou Cocodrie NWR*: State season on Wednesday, Saturday, and Sunday. Not open during state youth waterfowl hunt.

*Hillside and Morgan Brake NWRs*: State season except closed during refuge deer muzzleloader hunt November 30 - December 13, 2022.

*Panther Swamp NWR*: State season except Thursdays. Hunting is allowed only in Unit 1 on Monday, Tuesday and Wednesday. Hunting is allowed only in Unit 2 on Friday, Saturday and Sunday.

*St. Catherine Creek NWR*: Migratory game bird includes woodcock. Waterfowl hunting is allowed on Gilliard Lake, Butler Lake, and Salt Lake on Wednesday, Saturday, and Sunday during the state season. Incidental take of raccoon, beaver, nutria, and coyote is allowed when hunting migratory birds with the firearms and equipment authorized for use.

### Spring Turkey

#### Application period: January 15 - February 15

Legal hunting weapons include shotguns loaded with non-toxic shot and archery equipment.

*Hillside NWR*: Limited Draw Hunt. Applicants may apply at <https://trcomplex.recaccess.com>. Up to two applicants may apply. Daily bag limit is 1 adult gobbler, and the season bag limit is 2 adult gobblers.

*Panther Swamp NWR*: Daily bag limit is 1 adult gobbler, and the season bag limit is 2 adult gobblers.

### Youth Spring Turkey

*St. Catherine Creek and Bayou Cocodrie NWRs*: Limited Draw Hunt. Applicants may apply at <https://trcomplex.recaccess.com>. Daily bag limit is 1 adult gobbler, and the season bag limit is 2 adult gobblers.



### Fishing and Frogging

All federal and state regulations governing boating, creel limits, and license requirements must be followed by refuge anglers.

Frogging is permitted only on Hillside, Mathews Brake, Morgan Brake and Panther Swamp NWRs in accordance with state regulations and during the state bullfrog season.

Bowfishing is permitted on Hillside, Mathews Brake, Morgan Brake, Panther Swamp, and St. Catherine Creek NWRs during regular refuge hours.

*Bayou Cocodrie NWR:* Fishing is permitted throughout the year except closed during Deer Primitive Firearm Hunt. Bow and arrow fishing is allowed. Crossbow fishing is prohibited. Taking of alligator snapping turtle, crawfishing, and frogging are prohibited.

*Hillside NWR:* Fishing is permitted March 1 through November 15. The borrow ponds along the north levee are open throughout the year except closed during the muzzleloader deer hunt and spring turkey hunt.

*Mathews Brake NWR:* Fishing is permitted throughout the year except closed in the Waterfowl Sanctuary one day prior to the beginning of waterfowl season through March 1 (see map).

*Morgan Brake NWR:* Fishing is permitted throughout the year except closed during the muzzleloader deer hunt, and the Providence Ponds are closed one day prior to the beginning of waterfowl season through March 1. See informational kiosk for creel limits at Providence Ponds.

*Panther Swamp NWR:* Fishing is permitted throughout the year except closed during limited draw hunts and in Lower Twist and the Carter Ponds from December 15 – March 1. Office Pond is open year-round.

*St. Catherine Creek NWR:* Fishing is permitted February 1 to November 15 in designated areas only (see map). Anglers may fish from the roadside and levees where foot traffic is allowed. Anglers may handlaunch boats in The Swamp during nonflood conditions, and must not cross into closed areas. Taking of alligator gar, crawfishing, and frogging are prohibited.

### Prohibited Activities

- Littering
- Use or possession of alcohol
- Camping or overnight parking
- Fires
- Horses and mules
- Target shooting
- Trot lines, limb lines, yo-yos, jugs, and seines
- Any form of snagging of fish
- Trapping
- Tampering with any petroleum facility or equipment
- Operation of vehicles, ATVs, bikes (including e-bikes) on **"closed"** roads
- Hunting and/or Fishing in designated CLOSED areas or No Hunting areas
- All commercial activities, including guiding or participating in a paid guided hunt
- Organized drives for deer or hogs
- Removal of any material, animal, plant or mineral unless otherwise stated
- Use or possession of plastic flagging tape or other trail marking devices or materials, including plants
- Destroying any tree or plant
- Use or possession of climbing spikes or hunting from a tree which has metal objects driven or screwed into it
- Leaving personal property, except portable deer stands, on refuge
- Field dressing (skinning or processing) within 300' of any road, trail or parking lot
- Use or possession of toxic shot, including buckshot
- The use of artificial light, including vehicle headlights, to take any animal except as authorized for raccoon and frog hunting
- Use or possession of any drug or device for employing such drug for hunting
- Baiting, distribution of bait, or hunting over bait
- Trail cameras



Theodore Roosevelt  
National Wildlife Refuge Complex

# How to Purchase or Obtain a Permit



**Annual Public Use Permit**  
(Aug 1 - July 31)

**Limited Draw  
Hunt Permits**

- Deer
- Waterfowl
- Turkey

U.S. Fish & Wildlife Service  
Theodore Roosevelt National Wildlife Refuge Complex  
yazoo@fws.gov

Bayou Cocodrie NWR  
3391 Poole Road  
Vidalia, LA 71373  
601/442 6696  
[www.fws.gov/refuge/bayou-cocodrie](http://www.fws.gov/refuge/bayou-cocodrie)

Morgan Brake NWR  
1562 Providence Road  
Cruger, MS 38924  
662/235 4989  
[www.fws.gov/refuge/morgan-brake](http://www.fws.gov/refuge/morgan-brake)

Panther Swamp NWR  
12595 MS Highway 149  
Yazoo City, MS 39194  
662/836 3004  
[www.fws.gov/refuge/panther-swamp](http://www.fws.gov/refuge/panther-swamp)

St. Catherine Creek NWR  
21 Pintail Lane  
Natchez, MS 39120  
601/442 6696  
[www.fws.gov/refuge/st-catherine-creek](http://www.fws.gov/refuge/st-catherine-creek)

Yazoo NWR  
595 Yazoo Refuge Road  
Hollandale, MS 38748  
662/839 2638  
[www.fws.gov/refuge/yazoo](http://www.fws.gov/refuge/yazoo)

August 1, 2022



1

### Create an account or log in

First time users will need to create an account. All others will log in using their Username and Password.



2

### Purchase an Annual Public Use Permit

Obtain or Purchase an Annual Public Use Permit. Click the link titled "Permits and Draw Hunts" to add the permit to your cart. Proceed to checkout.



3

### Apply for a Limited Draw Hunt

All applicants are required to obtain an Annual Public Use Permit. Click "Permits and Draw Hunts" to select desired hunt and add to cart. Proceed to checkout to complete the application.



4

### Retrieve Permits

Permits will be saved in your account under the "My Permits" link from the dropdown menu. Limited Draw Hunt permits will be emailed to the address listed in each users' account and can also be found in "My Permits."



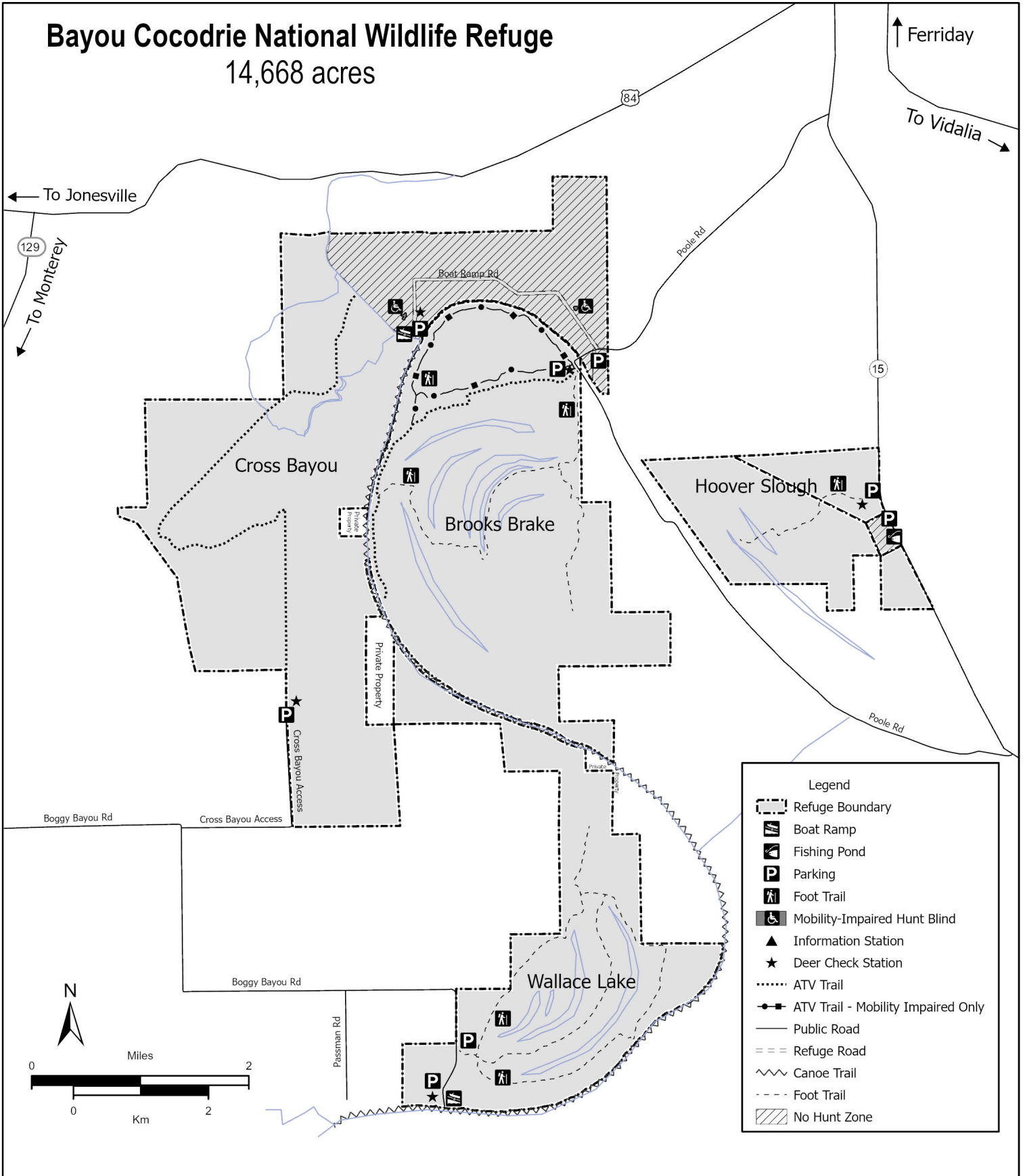
SCAN ME

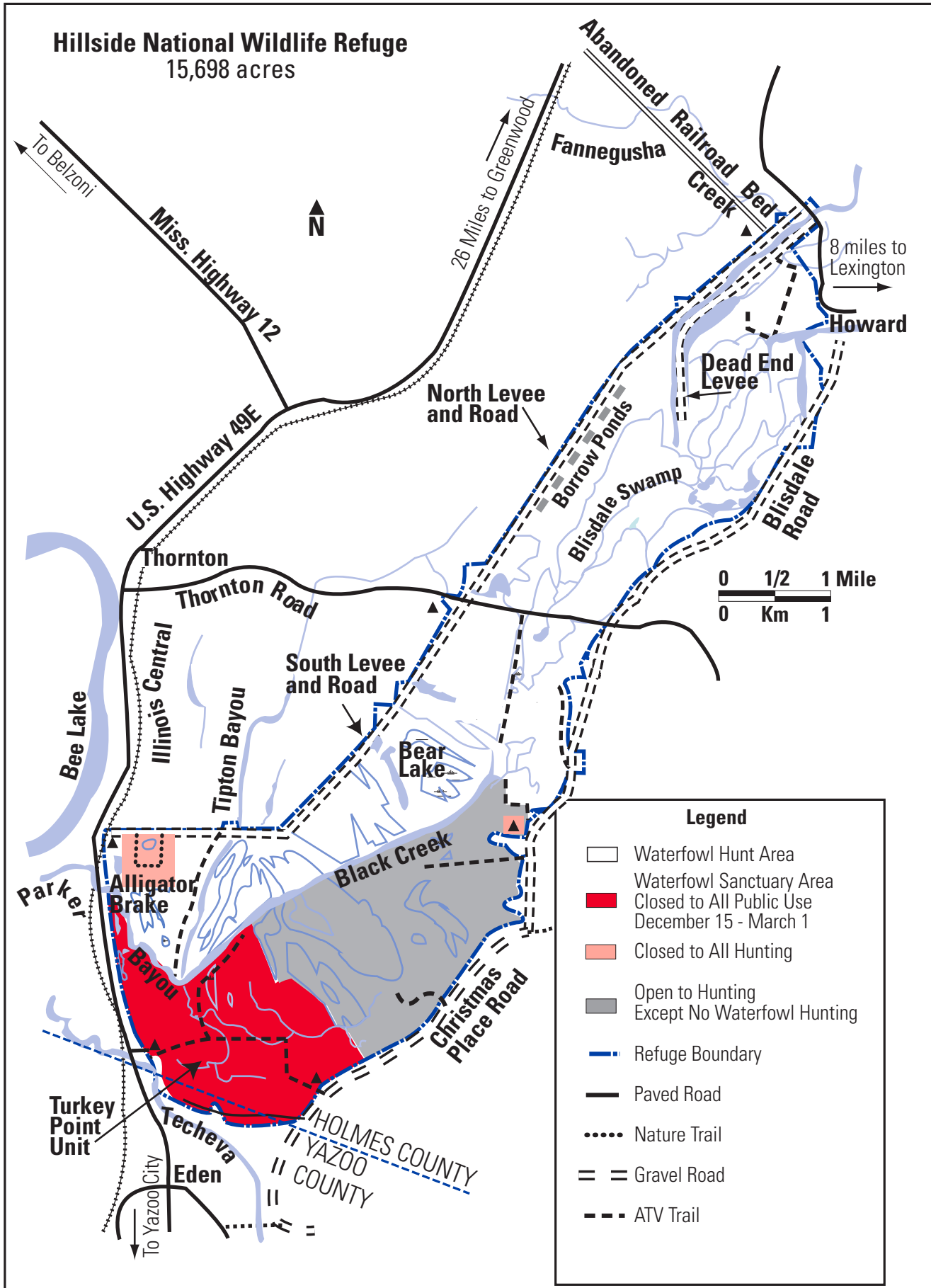
<https://trcomplex.recaccess.com/>



# Bayou Cocodrie National Wildlife Refuge

14,668 acres

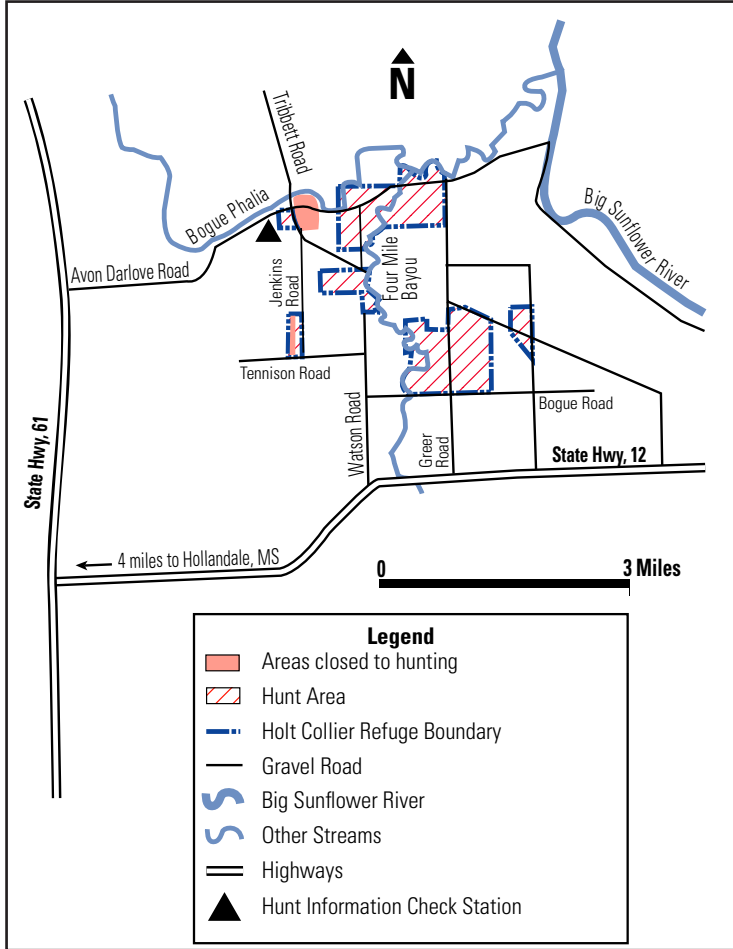




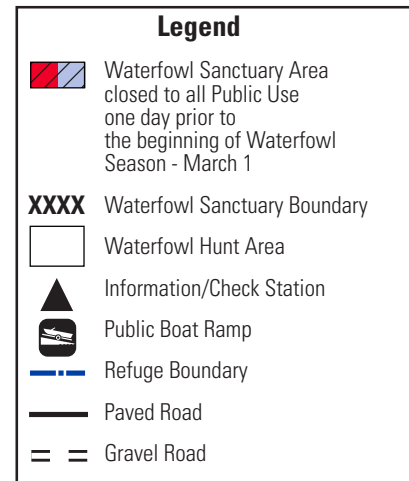
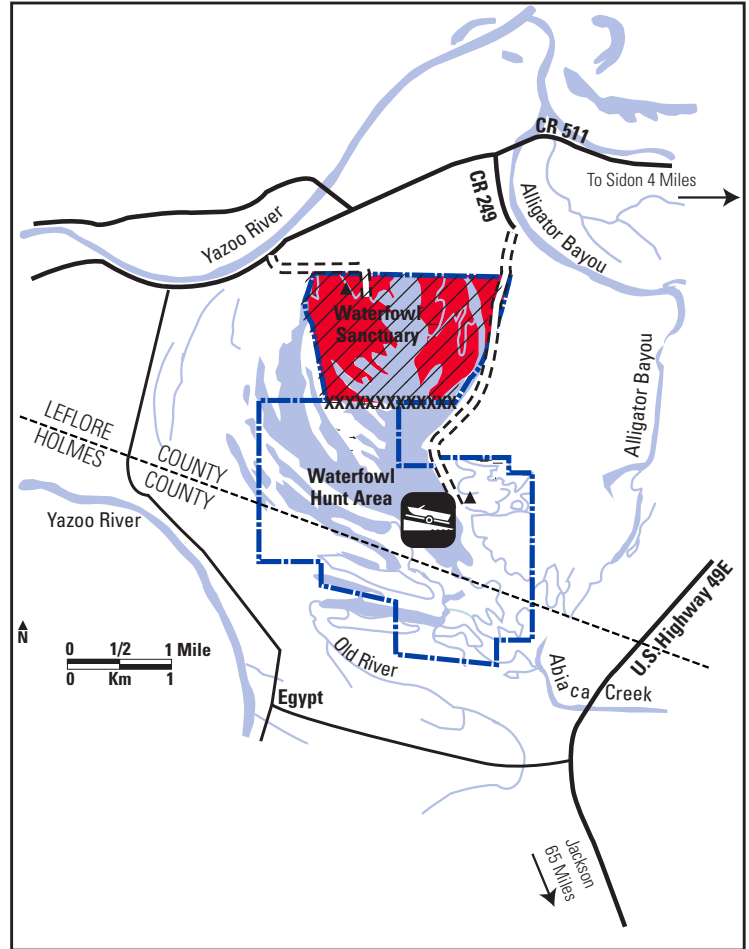




**Holt Collier National Wildlife Refuge**  
2,936 acres

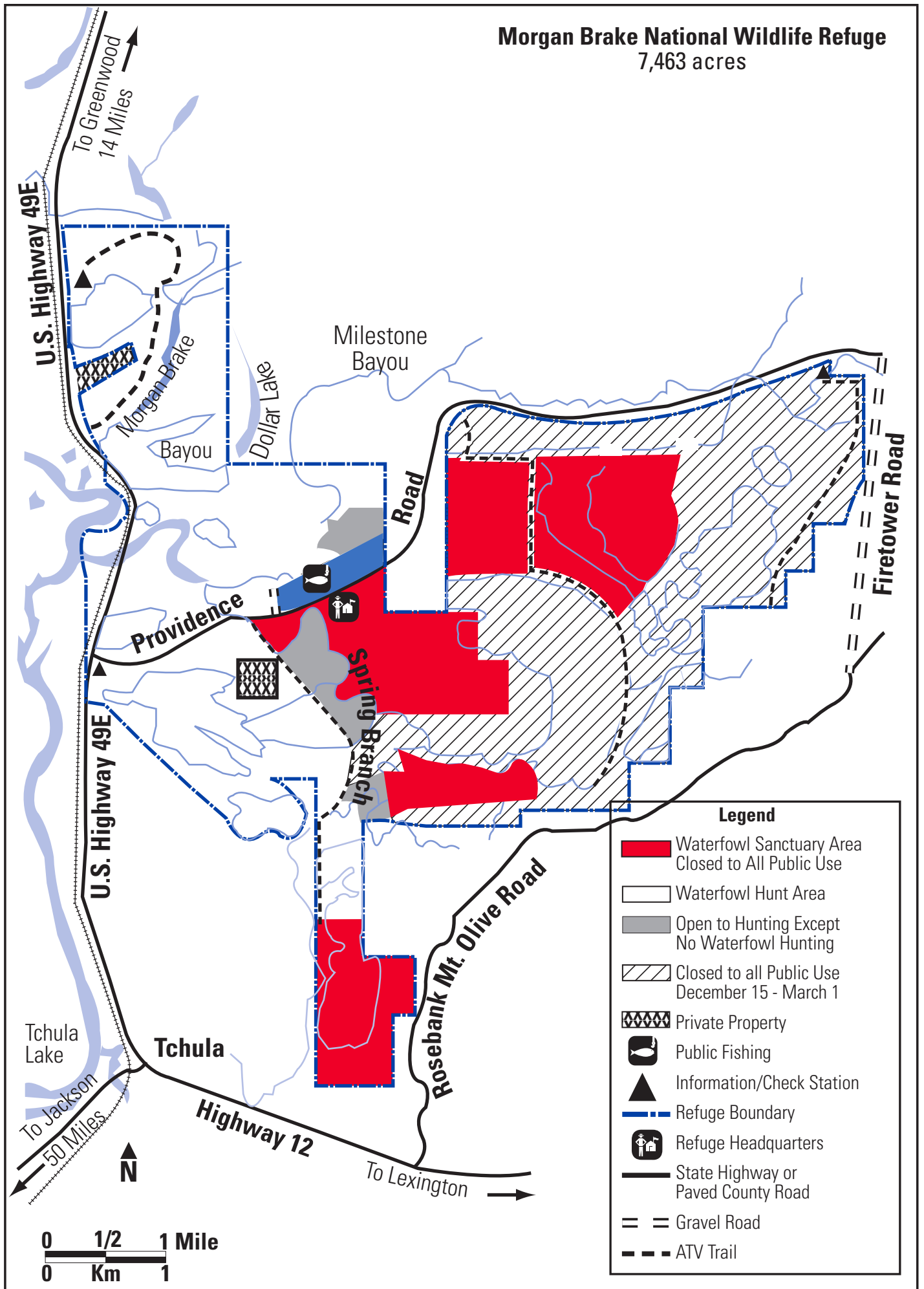


**Mathews Brake National Wildlife Refuge**  
2,414 acres



# Morgan Brake National Wildlife Refuge

7,463 acres



### Legend

- Waterfowl Sanctuary Area  
Closed to All Public Use
- Waterfowl Hunt Area
- Open to Hunting Except  
No Waterfowl Hunting
- Closed to all Public Use  
December 15 - March 1
- Private Property
- Public Fishing
- Information/Check Station
- Refuge Boundary
- Refuge Headquarters
- State Highway or  
Paved County Road
- Gravel Road
- ATV Trail

0 1/2 1 Mile  
0 Km 1



To Greenwood  
14 Miles

To Jackson  
50 Miles

To Lexington

Providence

Spring Branch

Tchula

Highway 12

Rosebank Mt. Olive Road

Firetower Road

Milestone Bayou

Dollar Lake

Morgan Brake Bayou

U.S. Highway 49E

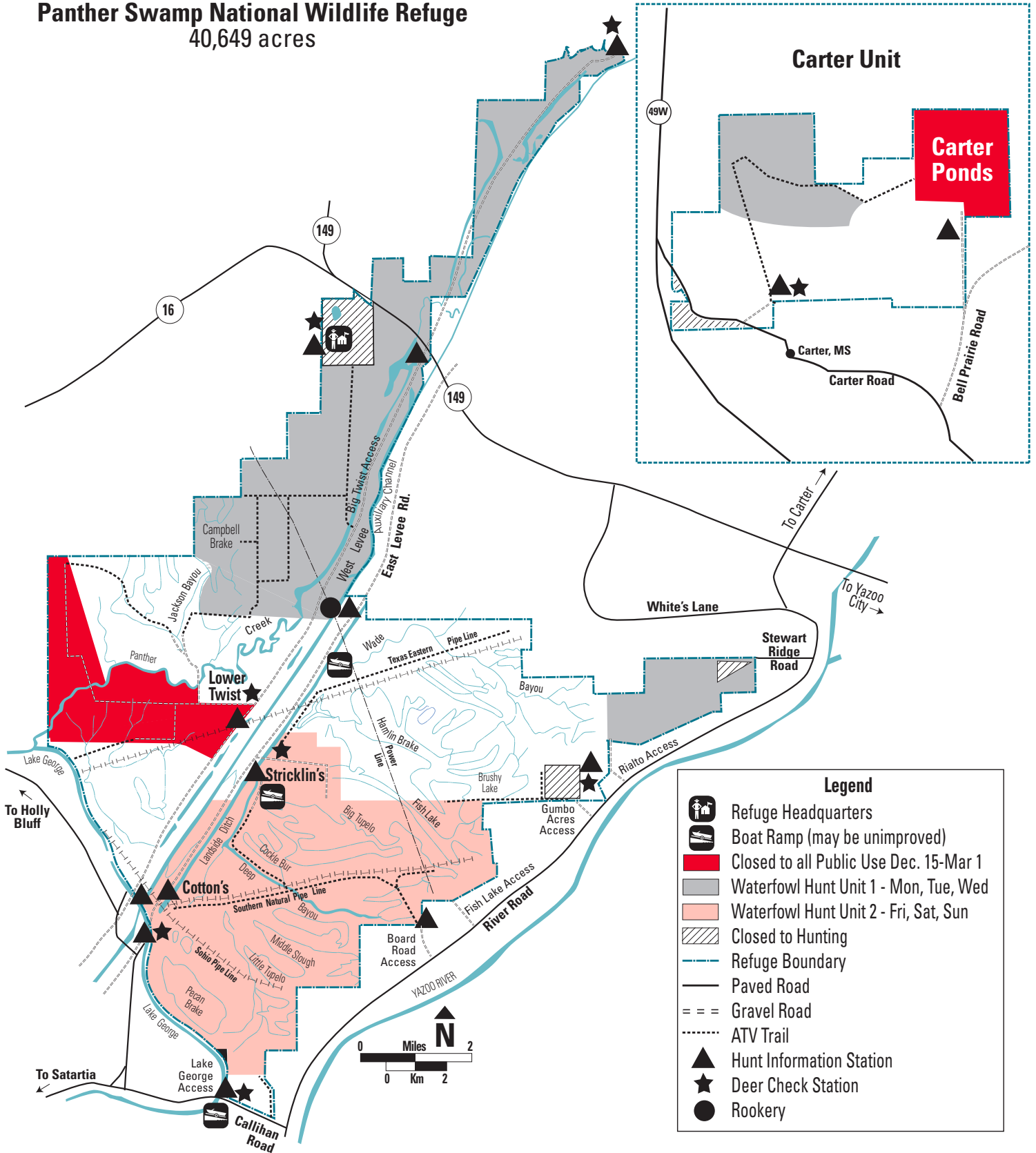
U.S. Highway 49E

Tchula Lake



# U.S. Fish & Wildlife Service

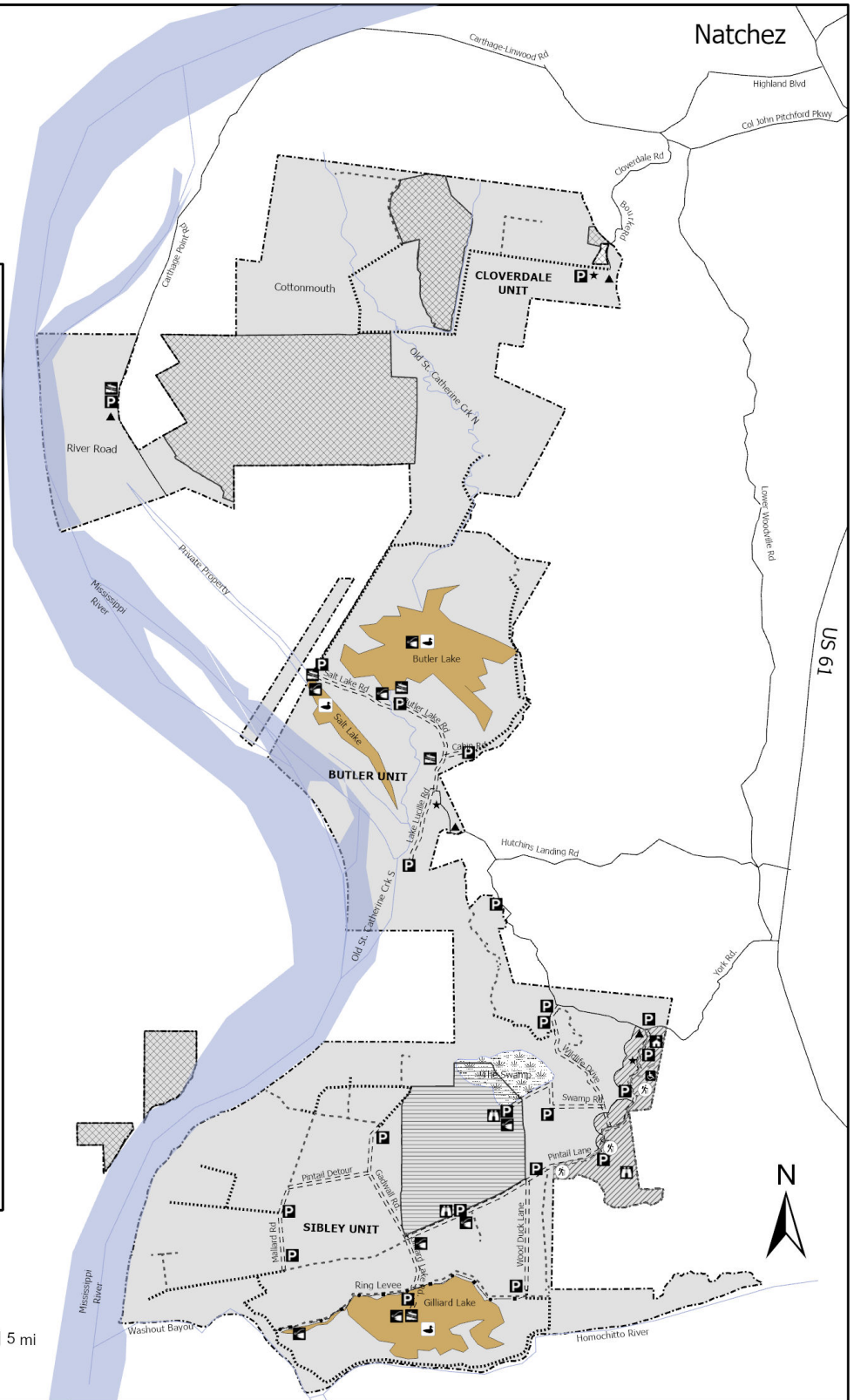
## Panther Swamp National Wildlife Refuge 40,649 acres





**St. Catherine Creek  
National Wildlife Refuge**  
24,589 acres

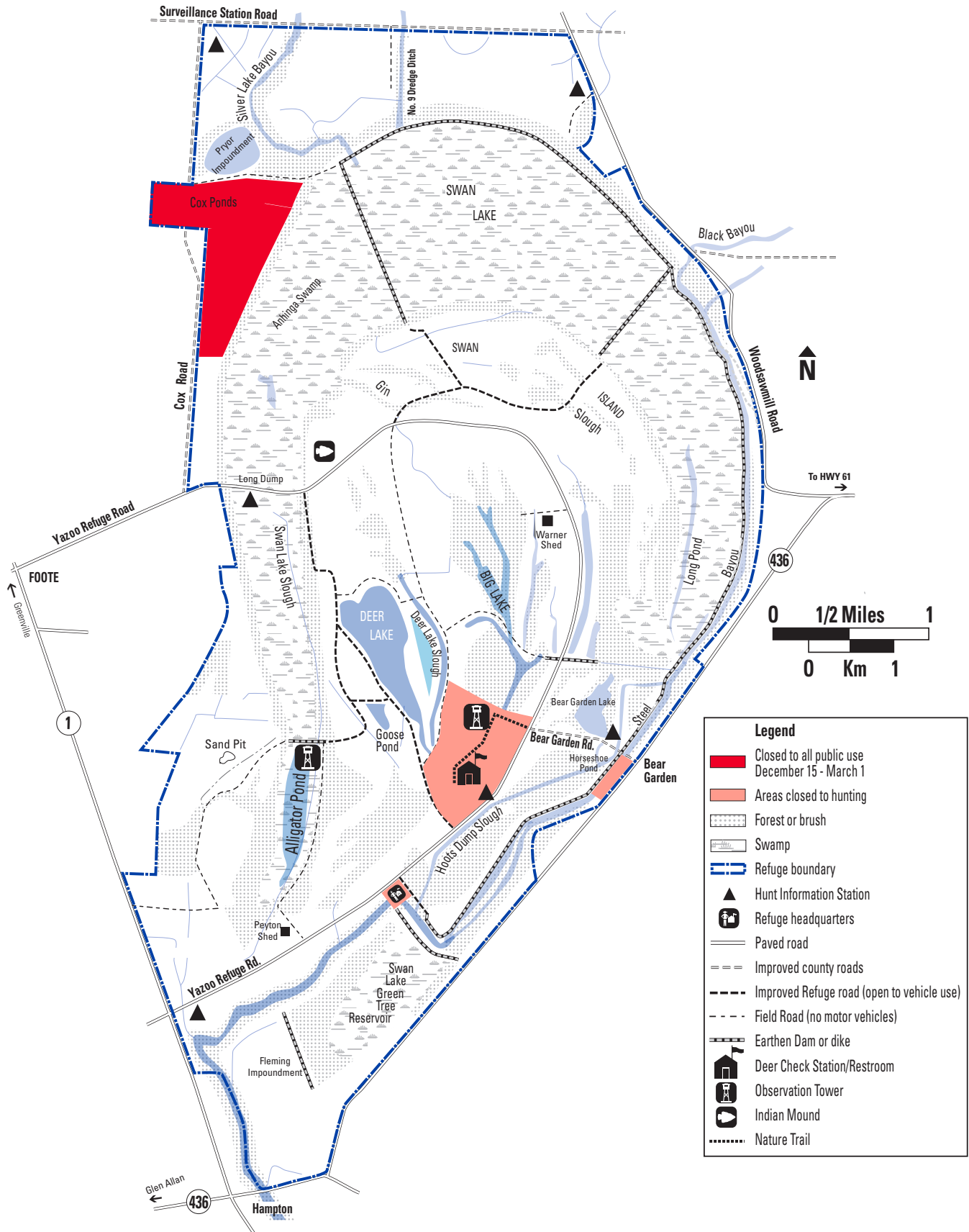
- Refuge Boundary
- Boat Launch
- Parking
- Refuge Headquarters
- Nature Trail - No Hunt Zone
- Birdwatching Hotspot
- Fishing (Feb 1-Nov 15 only)
- Information
- Deer check station
- Public Road
- Gravel Road
- ATV Trail (Seasonal)
- Foot Trail
- Closed Nov 15 - March 1
- Closed to All Access
- No Hunting Zone
- Closed to all boats Nov 15-Mar 31
- Waterfowl Hunting Area
- Mobility-impaired Hunt Blind (Advance Reservation Required)





# U.S. Fish & Wildlife Service

## Yazoo National Wildlife Refuge 12,942 acres



## Theodore Roosevelt National Wildlife Refuge Complex 2022-2023 Hunt Seasons

• Limited Draw Hunts are highlighted. • Only drawn selectees are allowed on the Refuge on those dates.

Species	Bayou Cocodrie (LA)	Hillside	Holt Collier	Mathews Brake	Morgan Brake	Panther Swamp	St. Catherine Creek	Yazoo
<b>Youth – Deer Gun</b>	10/29/22-10/30/22	Closed	Closed	Closed	Closed	Closed	11/5/22-11/6/22	11/25/22-11/26/22
<b>Youth/Veteran/ Military – Waterfowl</b>	N/A	2/4/23-2/5/23	Closed	2/4/23-2/5/23	2/4/23-2/5/23	2/4/23-2/5/23	2/4/23-2/5/23	Closed
<b>Youth (Only) – Waterfowl</b>	11/12/22 2/4/2023	Closed	Closed	Closed	Closed	Closed	Closed	1/21/23 1/28/23
<b>Youth – Squirrel</b>	Closed	Closed	Closed	Closed	Closed	Closed	9/24/22-9/25/22	Closed
<b>Senior Citizen – Deer Gun</b>	Closed	Closed	Closed	Closed	Closed	Closed	Closed	12/16/22-12/17/22
<b>Deer – Archery</b>	11/5/22-11/11/22 11/13/22-1/31/23	10/1/22-11/29/22 12/14/22-1/31/23	10/1/22-11/29/22 12/14/22-1/31/23	10/1/22-1/31/23	10/1/22-11/29/22 12/14/22-1/31/23	10/1/22-11/18/22 11/22/22-11/29/22 12/13/22-1/31/23	10/1/22-11/4/22 11/7/22-1/31/23	10/1/22-11/18/22 1/1/23-1/14/23
<b>Deer – Muzzleloader</b>	11/25/22-11/27/22	11/30/22-12/13/22	11/30/22-12/13/22	Closed	11/30/22-12/13/22	11/30/22-12/5/22 12/7/22-12/12/22	11/19/22-11/27/22 12/26/22-1/3/23	12/2/22-12/3/22 12/5/22-12/6/22 12/9/22-12/10/22
<b>Deer – Gun</b>	Closed	Closed	Closed	Closed	Closed	11/19/22-11/21/22	Closed	Closed
<b>Squirrel</b>	10/1/22-10/28/22 10/31/22-11/11/22 11/13/22-11/24/22 11/28/22-2/3/23 2/5/23-2/28/23	10/1/22-11/29/22 12/14/22-2/28/23	Closed	10/1/22-2/28/23	10/1/22-11/29/22 12/14/22-2/28/23	10/10/22-11/18/22 11/22/22-11/29/22 12/13/22-2/28/23	10/1/22-11/4/22 11/7/22-11/18/22 11/28/22-12/25/22 1/4/23-2/3/23	10/10/22-11/18/22 2/1/23-2/28/23
<b>Rabbit without Dogs</b>	10/1/22-10/28/22 10/31/22-11/11/22 11/13/22-11/24/23 11/28/22-2/3/23 2/5/23-2/28/23	10/15/22-11/29/22 12/14/22-2/28/23	10/15/22-11/29/22 12/14/22-2/28/23	10/15/22-2/28/23	10/15/22-11/29/22 12/14/22-2/28/23	10/15/22-11/18/22 11/22/22-11/29/22 12/13/22-2/28/23	10/15/22-11/4/22 11/7/22-11/18/22 11/28/22-12/25/22 1/4/23-2/3/23 2/6/23-2/28/23	10/15/22-11/18/22 2/1/23-2/28/23
<b>Rabbit with Dogs</b>	1/4/23-2/3/23 2/5/23-2/28/23	2/1/23-2/28/23	2/1/23-2/28/23	2/1/23-2/28/23	2/1/23-2/28/23	2/1/23-2/28/23	2/1/23-2/3/23 2/6/23-2/28/23	2/01/23-2/28/23
<b>Raccoon - Dogs Required</b>	Closed	10/1/22-11/29/22 12/14/22-2/28/23	Closed	10/1/22-2/8/23	10/1/22-11/29/22 12/14/22-2/28/23	10/1/22-11/18/22 11/22/22-11/29/22 12/13/22-2/28/23	2/1/23-2/3/23 2/6/23-2/28/23	1/27/23-1/29/23
<b>Turkey</b>	Youth Only 3/25/23-3/26/23	3/24/23-3/26/23 4/7/23-4/9/23 4/21/23-4/23/23	Closed	Closed	Closed	4/1/23-5/1/23	Youth only weekends with State season 3/18/23-4/30/23	Closed
<b>Waterfowl</b>	Saturday & Sunday: 11/19/22-11/20/22 12/3/22-12/4/22 12/17/22-12/18/22 12/24/22-12/25/22 12/31/22-1/1/23 1/7/23-1/8/23 1/14/23-1/15/23 1/21/23-1/22/23 1/28/23-1/29/23  Wednesday: 11/23/22 11/30/22 12/21/22 12/28/22 1/4/23 1/11/23 1/18/23 1/25/23	11/25/22-11/27/22 12/14/22-1/31/23	Closed	12/2/22 12/8/22-12/9/22 12/12/22-12/16/22 12/19/22-12/23/22 12/26/22-12/30/22 1/2/23-1/6/23 1/9/23-1/13/23 1/16/23-1/20/23 1/23/23-1/27/23 1/30/23-1/31/23  11/25/22-11/27/22 12/3/22-12/4/22 12/10/22-12/11/22 12/17/22-12/18/22 12/24/22-12/25/22 12/31/22-1/1/23 1/7/23-1/8/23 1/14/23-1/15/23 1/21/23-1/22/23 1/28/23-1/29/23	11/25/22-11/27/22 12/14/22-1/31/23	11/25/22-11/27/22 12/13/22-12/14/22 12/16/22-12/21/22 12/23/22-12/28/22 12/31/22-1/4/23 1/6/23-1/11/23 1/13/23-1/18/23 1/20/23-1/25/23 1/27/23-1/31/23	Saturday & Sunday: 11/26/22-11/27/22 12/3/22-12/4/23 12/10/22-12/11/22 12/17/22-12/18/22 12/24/22-12/25/22 12/31/22-1/1/23 1/7/23-1/8/23 1/14/23-1/15/23 1/21/23-1/22/23 1/28/23-1/29/23  Wednesday: 12/14/22 12/21/22 12/28/22 1/4/23 1/11/23 1/18/23 1/25/23	Closed
<b>Bobwhite Quail</b>	Closed	2/11/23-3/4/23	Closed	Closed	2/11/23-3/4/23	2/11/23-3/4/23	Closed	Closed
<b>Frog</b>	Closed	8/1/22-9/31/22 4/1/23-7/31/23	Closed	8/1/22-9/31/22 4/1/23-7/31/23	8/1/22-9/31/22 4/1/23-7/31/23	8/1/22-9/31/22 4/1/23-7/31/23	Closed	Closed