



U.S. Fish & Wildlife Service

Swanquarter National Wildlife Refuge Hunting Regulations

Welcome

The Swanquarter National Wildlife Refuge, 16,411 acres, established in 1932, was the first National Wildlife Refuge (NWR) to be established in North Carolina. The Refuge maintains an additional 27,000 acre Presidential Proclamation Area where migratory bird hunting is prohibited in open waters.

The refuge is administered by Mattamuskeet NWR.

Mattamuskeet National Wildlife Refuge
85 Mattamuskeet Road
Swan Quarter, NC 27885

www.fws.gov/refuge/mattamuskeet

252-926-4021

U.S. Fish & Wildlife Service
1-800-344-WILD

January 2022

Emergency Contact Numbers

Hyde County Sheriff's Office: 252-926-3171 or (911)

U.S. Fish and Wildlife Service: 252-926-4021

NC Wildlife Resources Commission: 1-800-662-7137

Waterfowl hunting is allowed on Swanquarter National Wildlife Refuge. No other hunting opportunities are available at Swanquarter NWR. The Entrance Road and Bell Island Pier are open for public use from sunrise to sunset – daylight use only.

A 6,120-acre area of marsh is open to waterfowl hunting in accordance with applicable State and Federal regulations. The hunt area includes Great Island and portions of marsh on both sides of Juniper Bay, as indicated on the hunting map and signage. Waterfowl may be hunted according to seasons and regulations set by the NC Wildlife Resources Commission.

In addition to state regulations, all waterfowl hunting is subject to the following conditions:

1. No hunting is allowed in the open waters of the Refuge within the 27,000 acre Presidential Proclamation Boundary which is located in Pamlico Sound and adjacent to the refuge and the refuge hunt area (please see hunt map).

However, if hunters, or a portion of their boat, are located within the marshes of the public hunt area, they may set decoys within the waters adjacent to the marsh (and within the Proclamation Boundary) and shoot at and retrieve waterfowl from the adjacent waters. The Proclamation Boundary is posted with large pilings and signs. Three piles mark each corner and single pilings are located every one mile between the corner pilings along the entire boundary.

2. We allow portable blinds. You must remove blinds, decoys, and other personal property at the end of each day's hunt. Construction of permanent blinds is prohibited.

3. Youth hunters under the age of 16 must have proof of passing a state approved Hunter Education Course to hunt on the refuge and must be supervised by a licensed hunter over the age of 21.

4. For reasons of hunter safety and courtesy, we prohibit hunters/hunt parties from hunting closer than 150 yards (135 meters) apart.

5. All weapons must be unloaded and dismantled or encased while being transported in a vehicle or boat.

6. Hunters using the refuge are subject to inspections of permits, licenses, hunting equipment, bag limits, vehicles, and their contents by Refuge or State enforcement officers.

7. We allow hunters to enter and remain in open hunting areas from 1 hour before legal shooting time until 1 hour after legal shooting time.

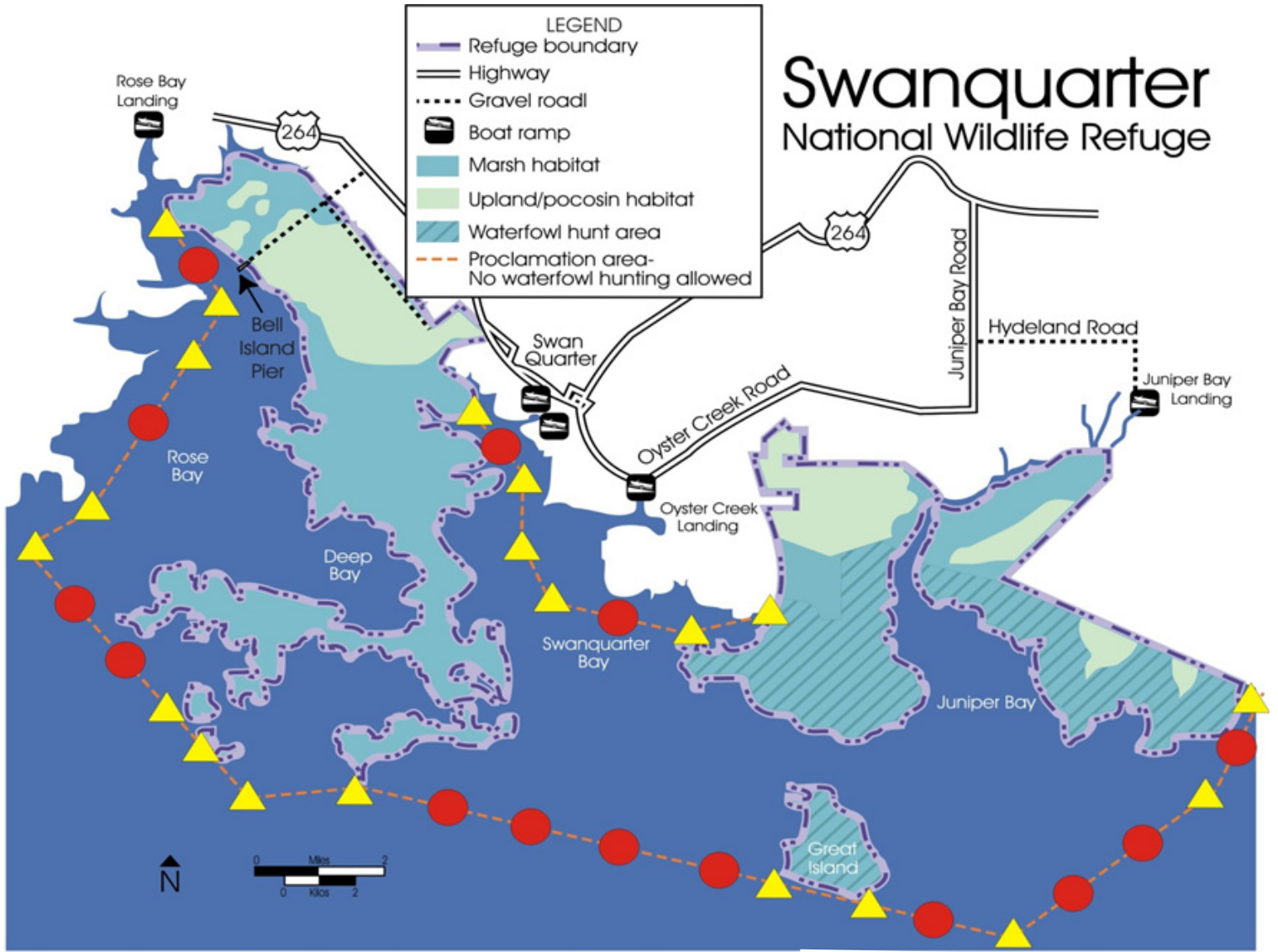
Prohibited Activities

| | |
|---|---|
| Camping | Fires |
| Littering | Target practice |
| Commercial Guiding (except when authorized Refuge special use permit) | |
| Air boating | Jet skiing |
| All terrain vehicles | Swimming |
| Sailing | Sailboarding |
| Molesting wildlife | Collecting plants, flowers, nuts or berries |

The use or possession of alcoholic beverages while hunting is prohibited.

This is a unit of the National Wildlife Refuge System, a network of lands and waters managed for the benefit of wildlife and people.





Proclamation Boundary Corner Points

- One Pile Dolphin Location
- ▲ Three Pile Dolphin Location

| Corner Number | Coordinates | |
|---------------|--|--|
| | Latitude 35 Degrees North (minutes, seconds) | Longitude 76 Degrees West (minutes, seconds) |
| 1 | 26 39.27 | 24 55.19 |
| 2 | 25 27.08 | 23 52.40 |
| 3 | 23 02.69 | 25 34.76 |
| 4 | 22 26.46 | 26 28.82 |
| 5 | 19 39.10 | 23 44.84 |
| 6 | 19 57.02 | 22 29.84 |
| 7 | 17 39.77 | 14 04.65 |
| 8 | 19 42.36 | 11 07.25 |
| 9 | 20 53.51 | 10 39.36 |
| 10 | 24 37.32 | 21 06.08 |
| 11 | 23 37.91 | 20 27.26 |
| 12 | 22 59.30 | 20 40.11 |
| 13 | 22 19.89 | 20 14.93 |
| 14 | 21 38.08 | 18 18.67 |
| 15 | 21 54.59 | 17 11.05 |