

**U.S. FISH & WILDLIFE SERVICE
DEPARTMENT OF THE INTERIOR
SWAN LAKE NATIONAL WILDLIFE REFUGE
SUMNER, MISSOURI**



GOOSE HUNTING PROGRAM

**For local information contact:
SWAN LAKE NATIONAL WILDLIFE REFUGE
16194 SWAN LAKE AVENUE
SUMNER, MO 64681
(660) 856-3323**

Swan Lake National Wildlife Refuge

Swan Lake National Wildlife Refuge lies in the glacial till plain of north-central Missouri in Chariton County, near the town of Sumner. It is located near the confluence of the Grand and Missouri Rivers, and is bordered on the south by Yellow Creek. The refuge was established by Executive Order #7563 on February 27, 1937. Purchase of 10,795 acres began at that time with money from the "N.I.R., Agriculture, and Wildlife Refuge Funds". Following purchase of the land, the Civilian Conservation Corps began work on the Refuge creating wetlands, constructing roads and buildings, and initiating the Refuge farming program.

The primary purpose for establishment of the Refuge was to provide nesting, resting and feeding areas for waterfowl, primarily ducks. An important secondary purpose was to preserve a remnant flock of prairie chickens. Unfortunately, adequate grassland habitat was unavailable to maintain a viable population.

Since establishment of the Refuge, the primary emphasis on waterfowl species has been expanded to include the Eastern Prairie Population of Canada geese. Canada geese were first observed using the Refuge in the early 1940's; and numbers increased gradually to peak populations from 150-200,000 annually during the early 1970's. Although these populations have steadily declined, Swan Lake National Wildlife Refuge is still considered a primary wintering area for Canada geese.

Snow geese, unlike Canada geese, have steadily increased in recent years. From November through March, populations in excess of 500,000 have become a common occurrence.

Goose Hunting

Goose hunting on the Refuge is permitted only from designated units unless otherwise specified. Hunting units are assigned through a self check-in process beginning approximately two hours before shooting time.

When you arrive in the morning check out your blind and register for the hunt. Each hunter must also get a Green Card. Write the selected Unit's number on the top and bottom of your Green Card. Deposit the top portion of your Green Card in the Drop Box and keep the bottom portion with you. [When you check out at the end of your day's hunt, as required by State Law, sign and deposit the bottom portion of your Green Card in the Drop Box with your hunting results filled out.](#)

Hunt Program Facts and Regulations

- The Refuge hunt area is open every day of Goose season, there are no closed days.
 - After you have signed in for your hunting unit, the route will be marked on the map to assist you in finding it. Park only at your assigned parking lot. Enter and leave the area by your assigned routes only. Shooting hours are posted at the hunting headquarters. **Do not drive to blinds or into farm fields.**
 - Geese are the only legal game. There is no fee for this hunting program.
 - Hunt from within assigned units only. Refilling or changing units is not permitted. Any unclaimed units will be available until 1:00 p.m.
 - You may pursue and shoot cripples but do not shoot at birds overhead while you are out of your assigned unit. Do not cross into the refuge area or another hunter's unit.
 - Possession or use of shotgun shells loaded with other than steel shot or an approved substitute is prohibited while hunting waterfowl.
 - Each hunter must keep his or her birds (bag) separated from those of other hunters at all times.
- Transport only your own legal bag. It is illegal to transport a live or crippled migratory bird without the proper federal permit.
 - No more than four people may hunt in an assigned hunting unit.
 - No decoy rental is available at hunting headquarters.
 - At the end of a days hunt, promptly pick up trash, decoys, etc., drop off the lower portion of the waterfowl hunting tag (Green Card) at hunting headquarters, and exit the area.
 - Units S1, S2, S3, S4, T1, T3 are restricted to hunting in the blind only.
 - The possession or use of alcoholic beverages on Swan Lake National Wildlife Refuge is prohibited.
 - Unit A7 and A3 are closed due to construction.
 - A few Refuge hunting units will be open to snow goose hunting during the special spring Conservation Order, dates will be posted at the hunting headquarters. This is a self check-in program.
 - Hunters may not check-in prior to 4:00 am daily. Please practice good sportsmanship and ethical behavior.

For further information, contact the refuge headquarters at 660/856-3323, Ext 13 and if no answer, leave a message.

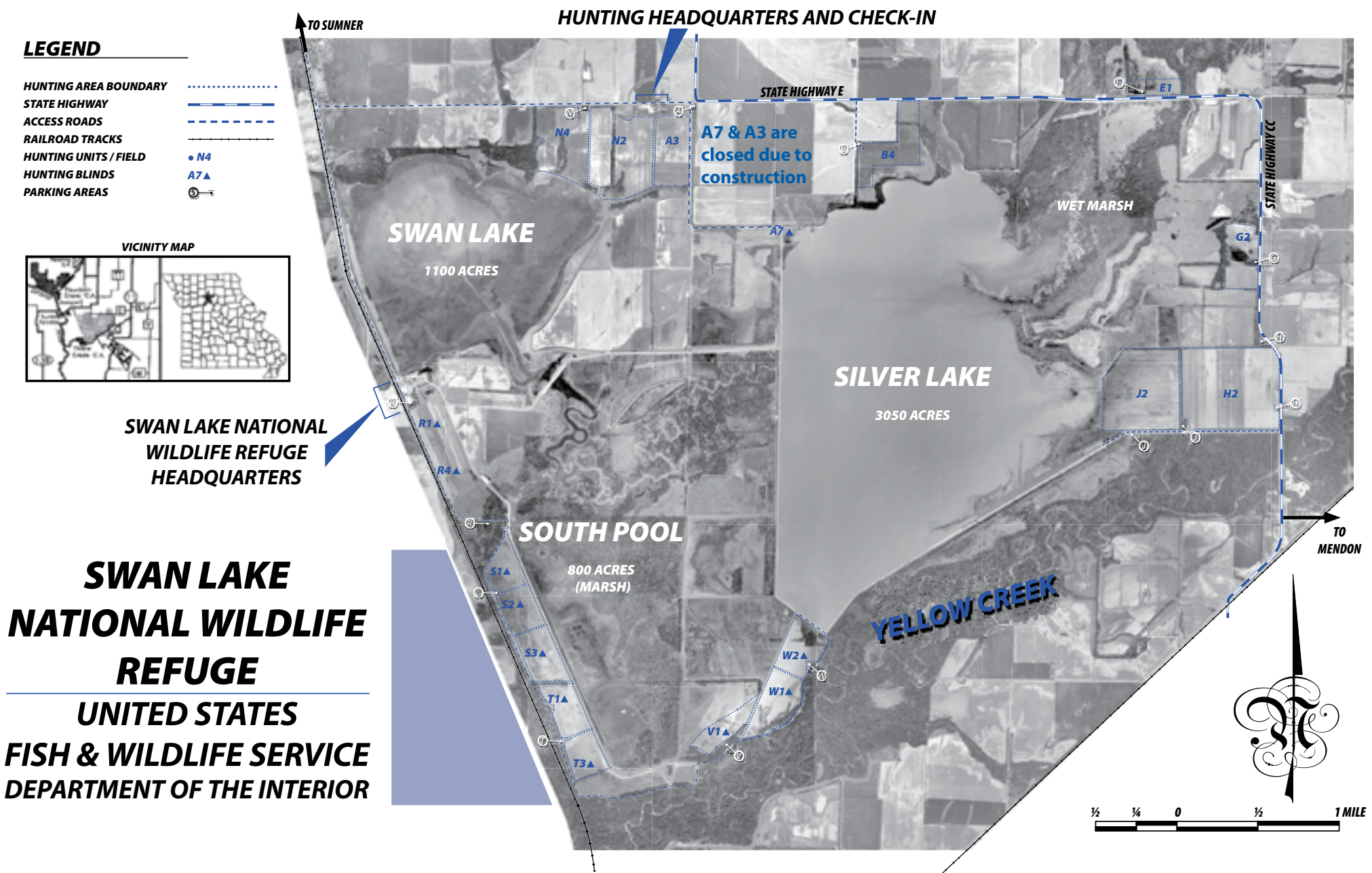
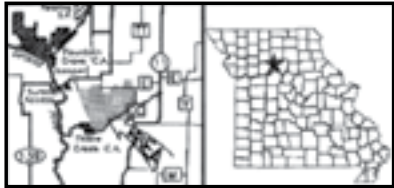
Mission Statement

The mission of the United States Fish and Wildlife Service is to “conserve, protect, and enhance fish and wildlife and their habitats for the continuing benefit of the American people.”

LEGEND

- HUNTING AREA BOUNDARY (dotted blue line)
- STATE HIGHWAY ——— (solid blue line)
- ACCESS ROADS - - - - - (dashed blue line)
- RAILROAD TRACKS ——— (solid black line)
- HUNTING UNITS / FIELD ● N4 (blue circle)
- HUNTING BLINDS ▲ A7 (blue triangle)
- PARKING AREAS ⊙ (circle with center dot)

VICINITY MAP



HUNTING HEADQUARTERS AND CHECK-IN

STATE HIGHWAY E

STATE HIGHWAY CC

SWAN LAKE

1100 ACRES

SILVER LAKE

3050 ACRES

SOUTH POOL

800 ACRES (MARSH)

YELLOW CREEK

A7 & A3 are closed due to construction

SWAN LAKE NATIONAL WILDLIFE REFUGE HEADQUARTERS

SWAN LAKE NATIONAL WILDLIFE REFUGE
UNITED STATES FISH & WILDLIFE SERVICE
DEPARTMENT OF THE INTERIOR

