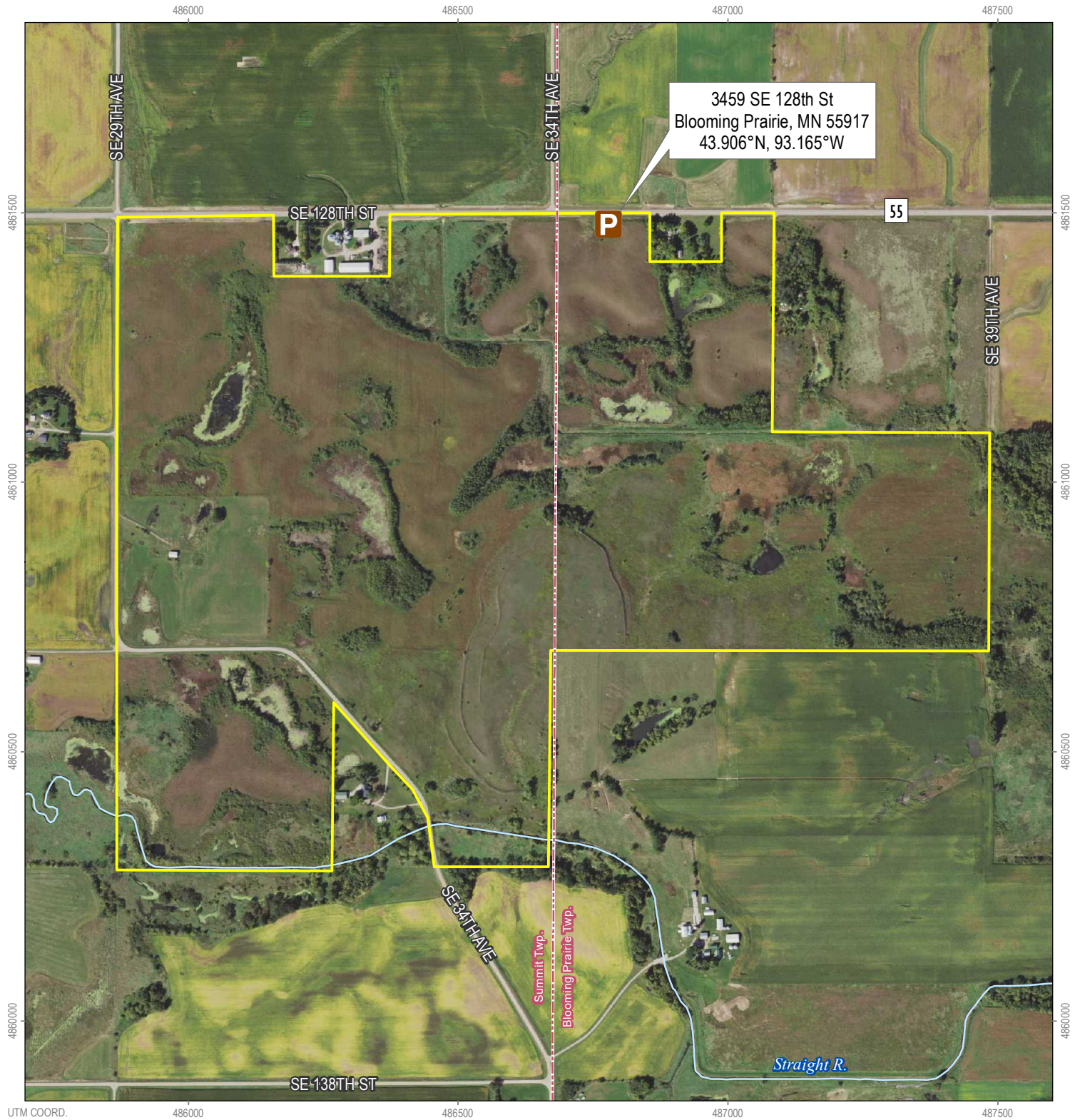




Minnesota Valley National Wildlife Refuge
Wetland Management District

Straight Creek WPA



- WPA Boundary
- Township Boundary
- Parking Lot
- County Road

Straight Creek WPA (345.4 acres)

Blooming Prairie & Summit townships, Steele County
Twp. 105N; Rng. 20W, Sec. 13; Rng. 19W, Sec. 18



MATT MILLETT • AUG. 2018 • UTM ZONE 15N (NAD83)
SOURCES: MWNWR, MNDOT, USDA, STEELE COUNTY

Boundaries shown are approximate. Please adhere to all posted signs.

