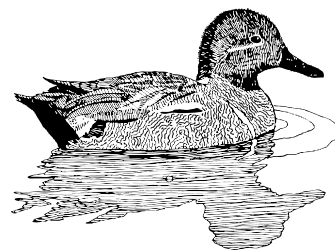


# Siletz Bay

## National Wildlife Refuge

### Waterfowl Hunting Regulations



#### Siletz Bay National Wildlife Refuge

Public hunting on Siletz Bay National Wildlife Refuge is permitted on approximately 199 acres.

These regulations supplement the general regulations which govern hunting on wildlife refuge areas as set forth in Title 50, Code of Federal Regulations. In addition to Federal regulations, State laws and regulations are adopted and in effect unless they have been further restricted by Federal law or regulations. All State boating regulations will be enforced.

#### Hunting Days & Hours

Hunting on Millport Slough east of Highway 101 is allowed only on Wednesday, Saturday and Sunday of each week. Hunting on Siletz Bay refuge lands west of Highway 101 is allowed seven days per week. Hunters are permitted to enter either unit of the refuge two hours before sunrise and remain until one hour after sunset.

#### Huntible Species

Geese, ducks, and coots may be hunted on both units of the refuge. No other wildlife species may be hunted on the refuge.

#### Blinds

Only portable blinds or blinds constructed of on-site dead vegetation or driftwood may be used.

#### Boats

Hunters accessing refuge lands by boat must use established boat launch areas. Hunters may moor boats within the marsh while hunting.

#### Areas Closed to Hunting

Hunters may not enter these areas closed to hunting to retrieve downed birds. Hunters may not access hunt areas by walking through these areas closed to hunting.

#### Retrieval Zones

These are refuge managed areas that are closed to all hunting. Setting decoys or blinds inside these zones is prohibited. The discharge of firearms in retrieval zones is prohibited. Hunters may enter posted retrieval zones to retrieve downed birds.

#### Dogs

Hunters may use dogs as an aid to retrieving waterfowl during the hunting season. Dogs must be in a vehicle or on a leash until they are in the marsh as part of the hunt. Dogs must remain under control of the handler at all times.

#### Removal of Personal Property

It is the responsibility of hunters to remove all personal property including blinds, decoys, boats, shot shell hulls, and refuse from the refuge at the end of each day.

#### Prohibited Acts

The use or possession of alcoholic beverages while hunting is prohibited. No person may discharge any weapon or ammunition in the field that may not be legally used for taking waterfowl. Only federally approved non-toxic shot may be used or possessed while on the refuge. No target practice or sighting in rifles. No fires.

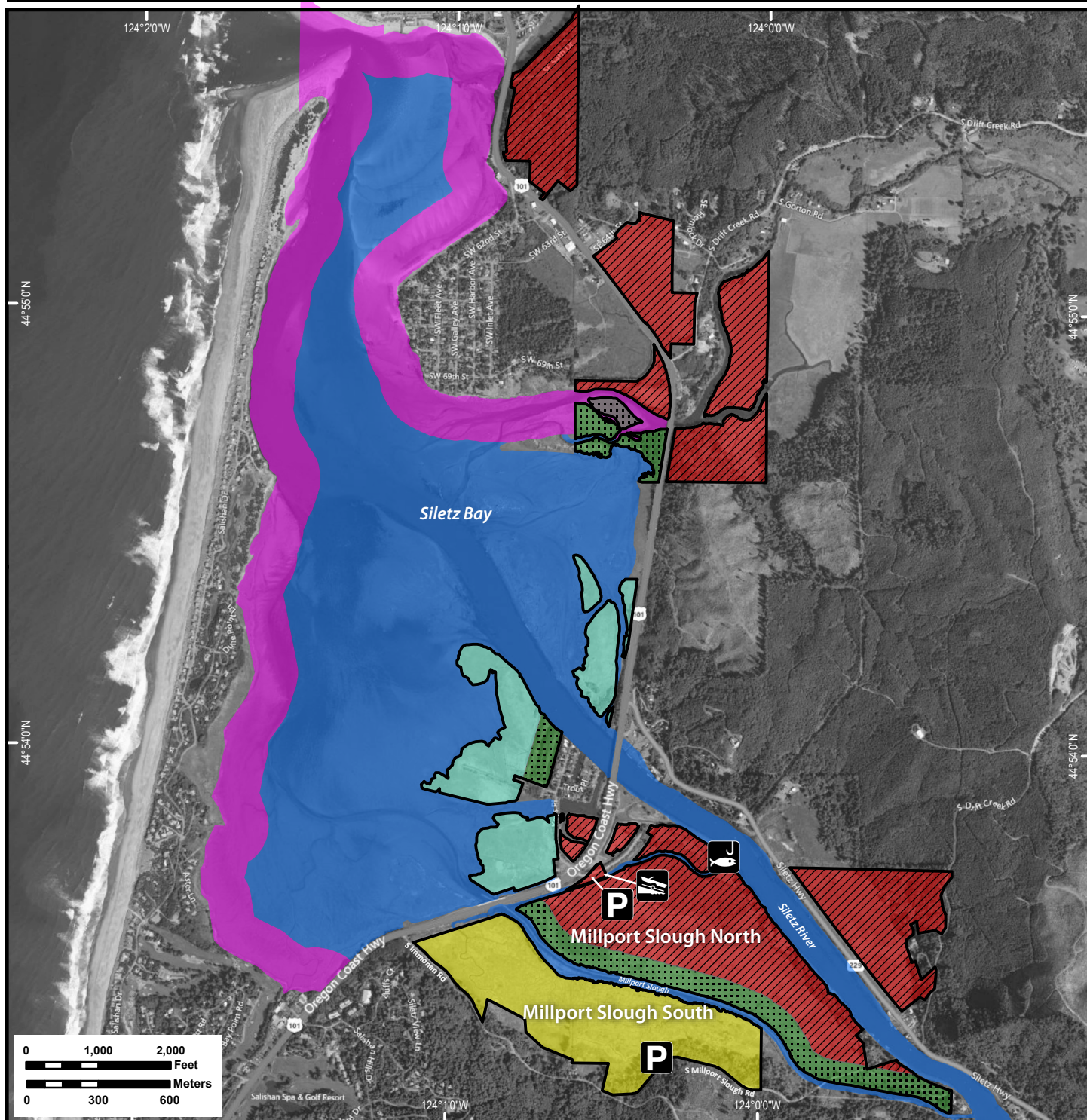
#### State Regulation Information

Additional information about season dates, harvest limits, and state and federal regulations can be found at: [www.dfw.state.or.us/resources/hunting/waterfowl/](http://www.dfw.state.or.us/resources/hunting/waterfowl/).

**Oregon Coast National Wildlife Refuge Complex**  
2127 SE Marine Science Drive  
Newport, Oregon 97365  
541/867 4550  
[oregoncoast@fws.gov](mailto:oregoncoast@fws.gov)  
[www.fws.gov/refuge/siletz\\_bay](http://www.fws.gov/refuge/siletz_bay)

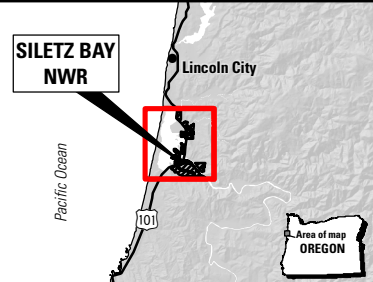


# Siletz Bay National Wildlife Refuge Waterfowl Hunt Area



## LEGEND

- |  |  |
|--|--|
| Refuge Managed Lands (Fee Title or Easement)             | ODFW 200 Yard Safety Zone (Hunting Prohibited) |
| Refuge Waterfowl Hunting Allowed 7 Days/Week             | State Managed Lands Open to Waterfowl Hunting  |
| Refuge Waterfowl Hunting Allowed 3 Days/Week (W, Sa, Su) | Fishing Area                                   |
| Retrieval Zone/Area Closed to Hunting                    | Car Top Boat Launch                            |
| Refuge Area Closed to All Hunting                        | Parking Area                                   |
- Hunters must comply with Refuge and ODFW regulations.



Data Source: Refuge Boundaries from USFWS/R1; Roads from ESRI; Imagery from Bing Maps

While the U.S. Fish and Wildlife Service (USFWS) makes every effort to represent the data shown on this map as completely and accurately as possible, the USFWS gives no warranty, expressed or implied, as to the accuracy, reliability, or completeness of these data. In addition, the USFWS shall not be liable for improper or incorrect use of the data described and/or contained herein. Graphical representations provided by the use of this data do not represent any legal description of the data herein and are provided only as a general representation of the data.