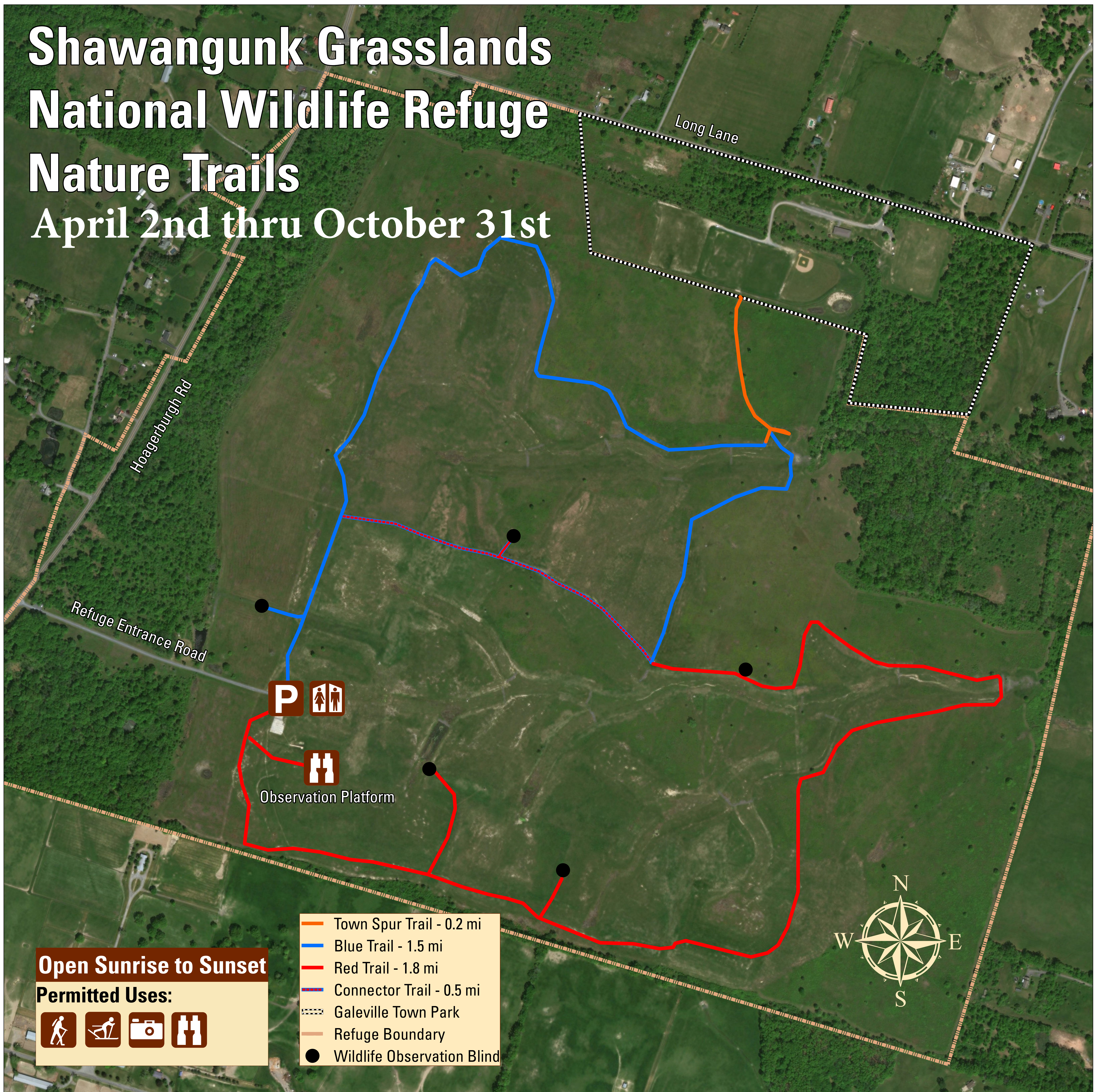


Shawangunk Grasslands National Wildlife Refuge Nature Trails April 2nd thru October 31st



Open Sunrise to Sunset

Permitted Uses:



- Town Spur Trail - 0.2 mi
- Blue Trail - 1.5 mi
- Red Trail - 1.8 mi
- Connector Trail - 0.5 mi
- Galeville Town Park
- Refuge Boundary
- Wildlife Observation Blind