



U.S. Fish & Wildlife Service

James River National Wildlife Refuge

SPRING TURKEY QUOTA HUNT MAP 2022

February 2022

77°9'30"W

77°9'W

77°8'30"W

77°8'W

77°7'30"W

77°7'W

77°6'30"W

37°18'N

37°18'N

37°17'30"N

37°17'30"N

37°17'N

37°17'N

37°16'30"N

37°16'30"N

37°16'N

37°16'N

37°15'30"N

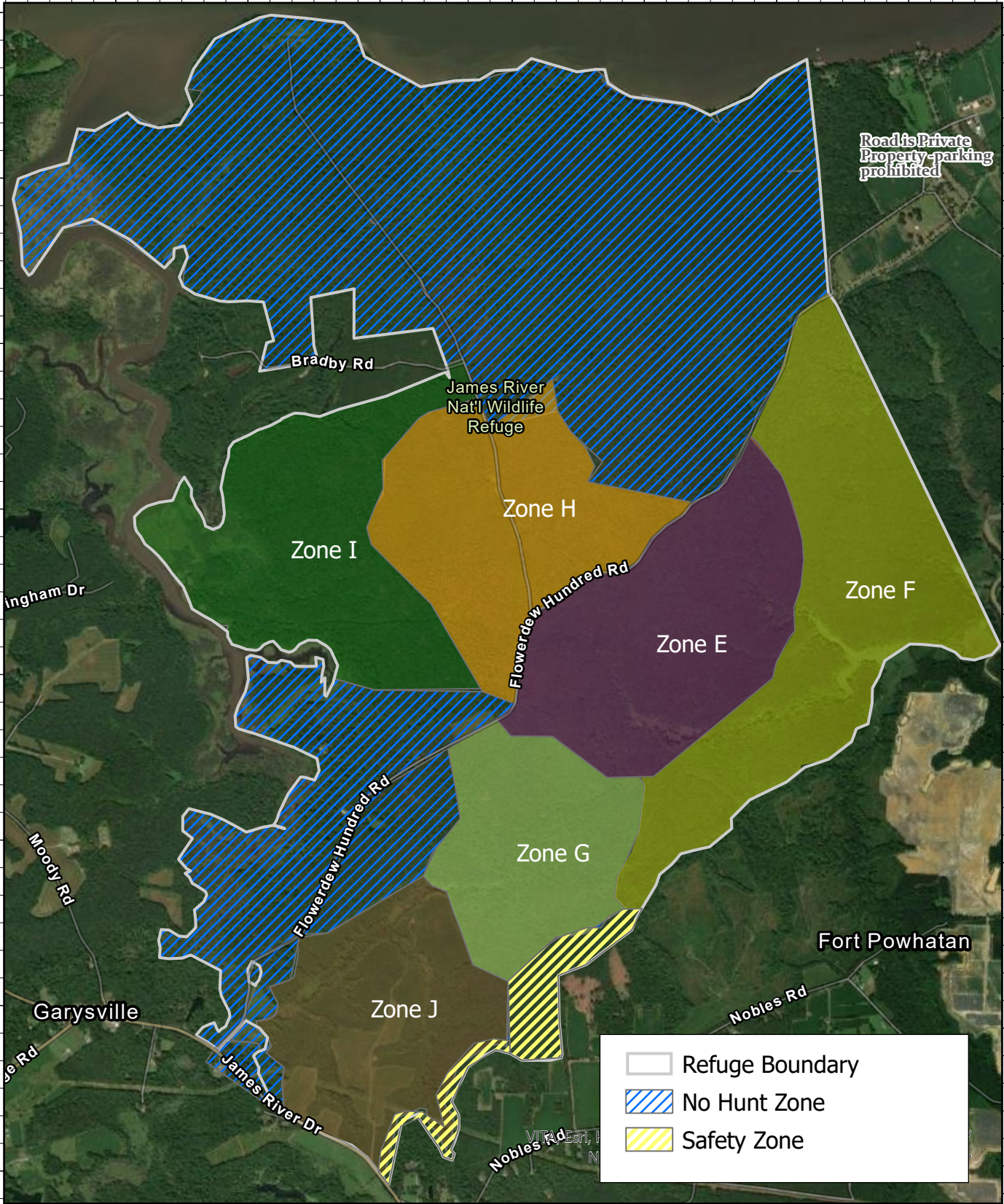
37°15'30"N

37°15'N

37°15'N

37°14'30"N

37°14'30"N



Produced Eastern Virginia Rivers NWR, Warsaw, VA
Produced: August 31, 2020
Basemap: ESRI Digital Globe

0 0.15 0.3 0.6 0.9 1.2 Miles
0 0.2 0.4 0.8 1.2 1.6 Kilometers

The USFWS makes no warranty for use of this map and cannot be held liable for actions or decisions based on map content. This map template is intended as a general guide for the creation of U.S. Fish and Wildlife maps at a small scale. This section of the Map Bibliography should be used to describe the purpose of the map, the data used to create it, and any special procedures used to process the data. ESRI base maps used must be acknowledged: Map image is the intellectual property of Esri and is used herein under license. Copyright © 2014 Esri and its licensors. All rights reserved.



Datum: NAD 83