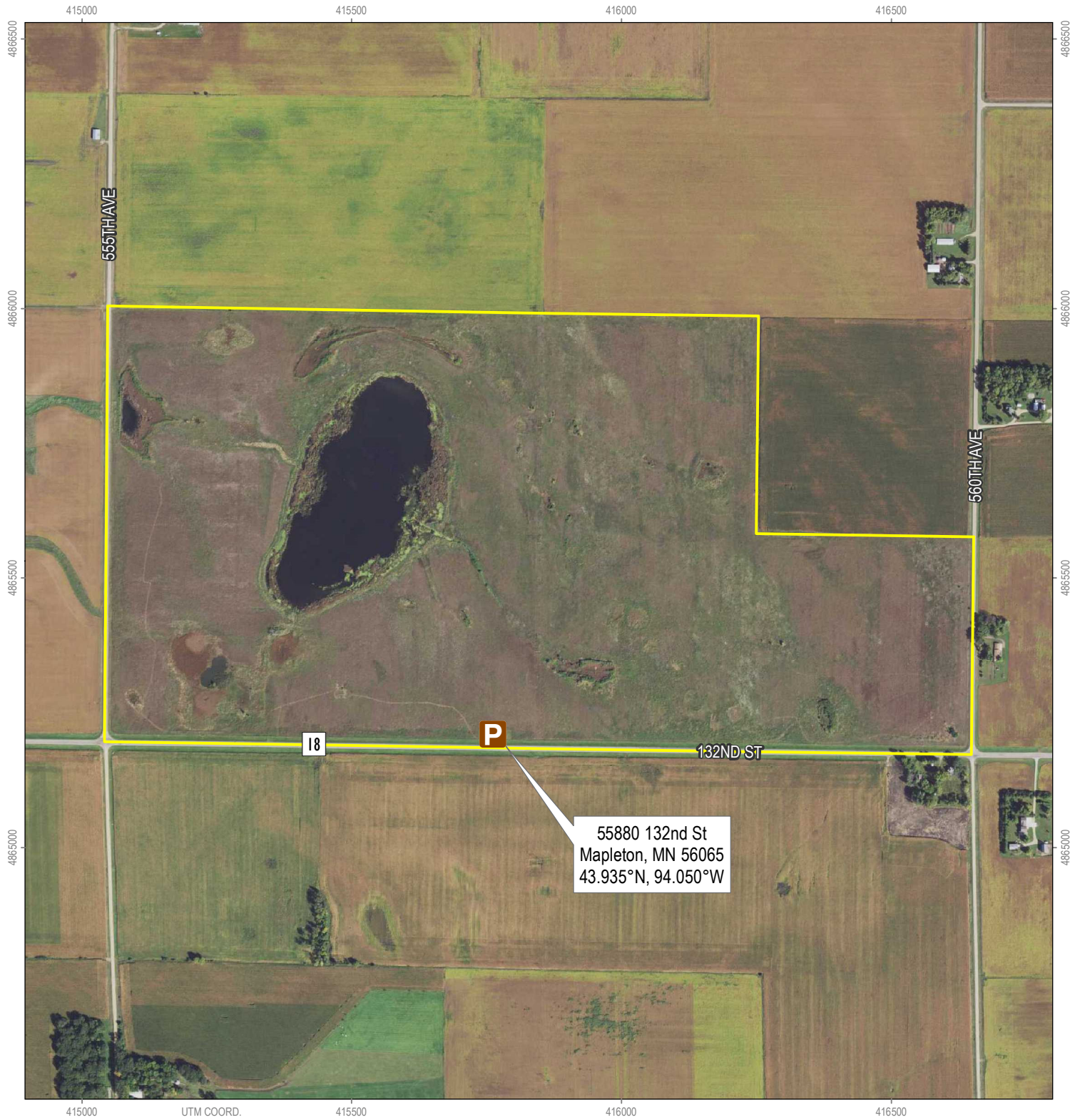




Minnesota Valley National Wildlife Refuge
Wetland Management District

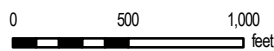
Roberts WPA



- WPA Boundary
- Parking Lot
- County Road

Roberts WPA (281.0 acres)

Lyra Township, Blue Earth County
Twp. 106N, Rng. 27W, Secs. 34 & 35



MATT MILLETT • AUG. 2018 • UTM ZONE 15N (NAD83)
SOURCES: MNWR, MNDOT, USDA, BLUE EARTH COUNTY

Boundaries shown are approximate. Please adhere to all posted signs.

