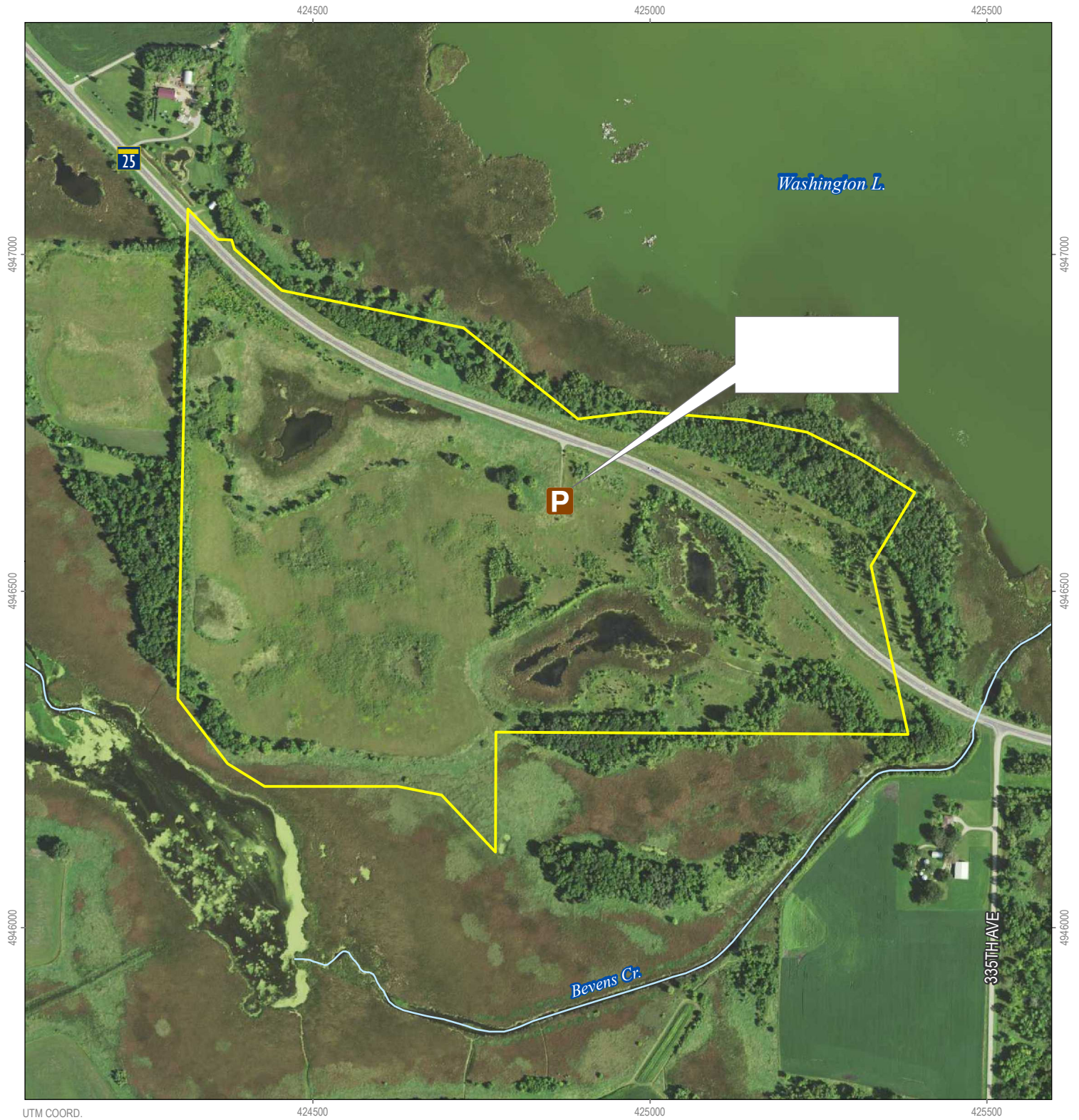







**Minnesota Valley National Wildlife Refuge**  
Wetland Management District

*Redhead WPA*



-  WPA Boundary
-  Parking Lot
-  State Highway

**Redhead WPA (151.5 acres)**

Washington Lake Township, Sibley County  
Twp. 114N, Rng. 26W, Secs. 21 & 22



MATT MILLETT • SEPT. 2018 • UTM ZONE 15N (NAD83)  
SOURCES: MNWR, MNDOT, USDA, SIBLEY COUNTY

Boundaries shown are approximate. Please adhere to all posted signs.

