



U. S. Fish & Wildlife Service



Madison Area Watersheds – Wetlands and Deepwater Habitat

Results of the National Wetlands Inventory

Cover photo by Luke Worsham, Lynxnet, LLC

Madison Area Watersheds – Wetlands and Deepwater Habitat

Results of the National Wetlands Inventory

Rusty Griffin
U.S. Fish and Wildlife Service
National Wetlands Inventory
505 Science Dr.
Madison, WI

Jeff Ingebritsen
Lynxnet, LLC
under contract to
U.S. Fish and Wildlife Service
National Wetlands Inventory
505 Science Dr.
Madison, WI

Luke Worsham
Lynxnet, LLC
under contract to
U.S. Fish and Wildlife Service
National Wetlands Inventory
505 Science Dr.
Madison, WI

September 2016

This report should be cited as: Griffin, R., Ingebritsen, J., and Worsham, L. 2016. Madison Area Watersheds – Wetlands and Deepwater Habitat. U.S. Fish and Wildlife Service. National Wetlands Inventory Technical Report. 28 pp.

Table of Contents

Introduction.....	1
Study Area	1
General description	1
Geography.....	2
Vegetation, soils, land use	2
Natural history or important cultural features.....	2
Climate.....	2
Classification Results.....	3
References.....	7
Appendix A.....	14

INTRODUCTION

The U.S. Fish and Wildlife Service (FWS) is the principal Federal agency that provides information to the public on the extent and status of the Nation's wetlands. The mapping was accomplished using ArcMap in a heads-up mapping process, using freely available public datasets. The wetlands mapping was based on interpretations of 2013 color-infrared leaf-on aerial imagery from the National Agriculture Imagery Program (NAIP). Ancillary datasets included hydric soils (SSURGO), U.S. Geological Survey (USGS) topographic maps, digital elevation data, additional leaf-off orthophotography, and the previously derived NWI wetlands dataset. During the initial mapping, site visits were conducted for field verification of photointerpretations.

Following the mapping, polygon errors were corrected using custom QA/QC tools, and the data was checked using internal QC reviews. The mapping followed national standards, including the Federal Geographic Data Committee (FGDC) Wetlands Classification Standard, the FGDC Wetlands Mapping Standard, and the FWS Data Collection Requirements and Procedures. Wetland classifications were based on the FGDC Wetland Classification Standard (FGDC 2013).

STUDY AREA

The three Madison area watersheds that comprise the study area are located in south-central Wisconsin and include the Headwaters Yahara River, Lake Mendota – Yahara River, and Lake Monona – Yahara River (Figure 4). Together, these watersheds total 208,010 acres and comprise the northernmost portion of the Middle Rock hydrologic subbasin.

General description

The project area encompasses three watersheds comprising the greater Madison, WI area. Most of the area is in Dane County, with the upper portion of the Yahara River Headwaters overlapping Columbia County. In addition to the city of Madison, the region includes the surrounding communities and suburbs of Waunakee, DeForest, McFarland, Fitchburg, and Middleton. The area includes three of the four major lakes in the Madison chain of lakes: Lake Mendota, Lake Monona, and Lake Waubesa, in addition to the smaller Upper Mud Lake and Lake Wingra. The Yahara River is the main tributary to this chain; other significant tributaries

include Sixmile Creek, Token Creek, Starkweather Creek, Dorn Creek, Wingra Creek, Nine Springs Creek, and Swan Creek.

Geography

Madison is located in the southern prairie section of Wisconsin, overlapping Dane and Columbia Counties. The physical geography is relatively flat, with a few hills, owing to its glacial history.

Vegetation, soils, land use

The southern portion of the watersheds comprising the city of Madison and its suburbs is predominantly urban, suburban, and developed. As the northern portion gradually stretches away from Madison, it transitions to more rural agriculture with smaller exurban communities.

Cherokee Marsh is a major wetlands complex in the southern tip of the Yahara Headwaters watershed, where it adjoins Lake Mendota and the Yahara River/Lake Mendota Watershed. Nine Springs and Waubesa Wetlands Natural Areas are two other complexes located on the western side of Lake Waubesa in the Lake Monona – Yahara River watershed. Soils throughout the study area are predominantly silt loam over sandy loam originating from glacial till.

Natural history or important cultural features

Surrounding non-urban areas have a long history of agriculture which has changed the hydrology and vegetation of these areas. Original wetlands have been altered via drainage tiles in agricultural areas, or through urban development. Much of the city of Madison developed over previously existing wetlands. In addition, much of the original vegetation associated with prairies, oak forests, and savannas has been lost. In the overall Southeast Glacial Plains Ecological Landscape, only around 10% of the land area is forested.

Climate

The Madison area's average annual high and low temperatures are 56 °F and 37 °F, respectively, with an average annual precipitation of 34 inches, weighted towards the summer months.

CLASSIFICATION RESULTS

Overall, 14,156 acres of wetland and 17,395 acres deepwater habitat were classified in the Madison watersheds, representing 15% of the total 208,010 acre study area (Table 1). Figure 1-3 show distributions of surface water and wetland area for individual watersheds.

Table 1. Wetland acreage summaries for individual Madison area watersheds.

Wetland Type	<i>Lake Monona</i>		<i>Headwaters Yahara</i>		<i>Lake Mendota</i>		<i>Total</i>	
	Acres	% Study Area	Acres	% Study Area	Acres	% Study Area	Acres	% Study Area
Freshwater Emergent Wetland	4,058	6.9	3,112	4.3	2,343	3.1	9,264	4.5
Freshwater Forested/Shrub Wetland	1,475	2.5	605	0.8	392	0.5	2,384	1.1
Freshwater Pond	405	0.7	356	0.5	179	0.2	1,103	0.5
Lake	6,151	10.5	646	0.9	9,873	12.9	16,842	8.1
Riverine	209	0.4	165	0.2	98	0.1	553	0.3
Other	80	0.1	811	1.1	134	0.2	1,405	0.7
Total	12,377	21.0	5,695	7.8	13,020	17.0	31,614	15.2

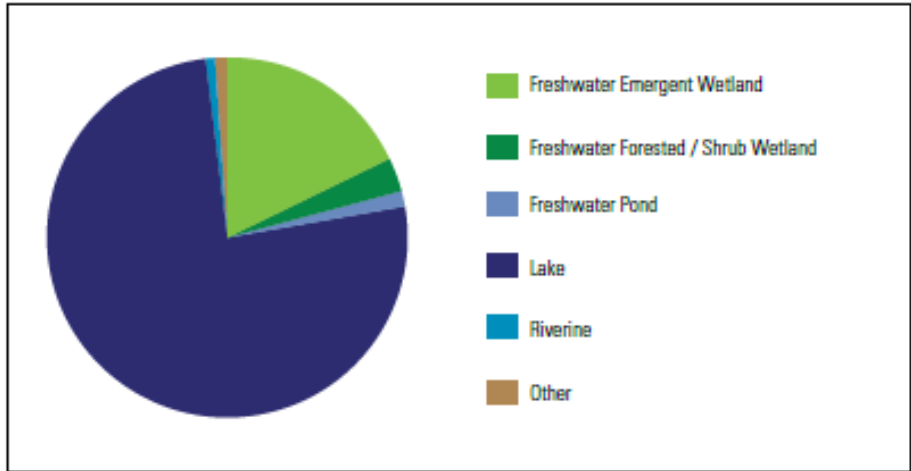


Figure 1. Distribution of total surface water and wetland area in the Lake Mendota – Yahara River Watershed.

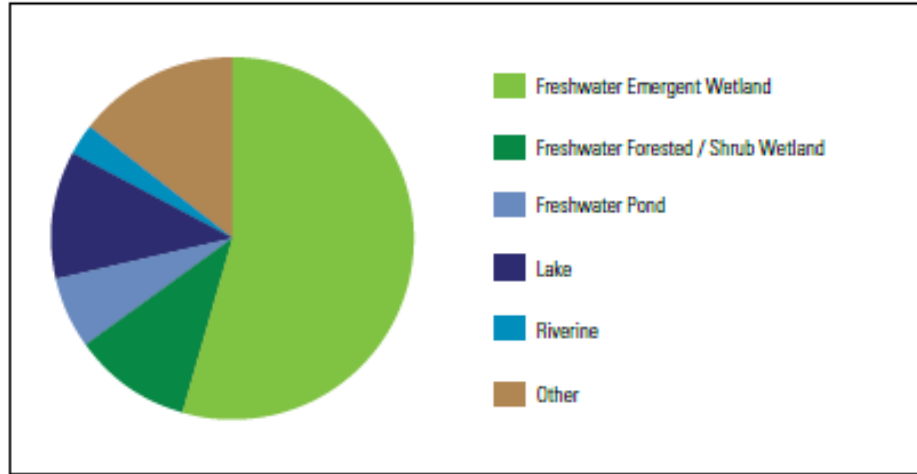


Figure 2. Distribution of total surface water and wetland area in the Headwaters Yahara River Watershed.

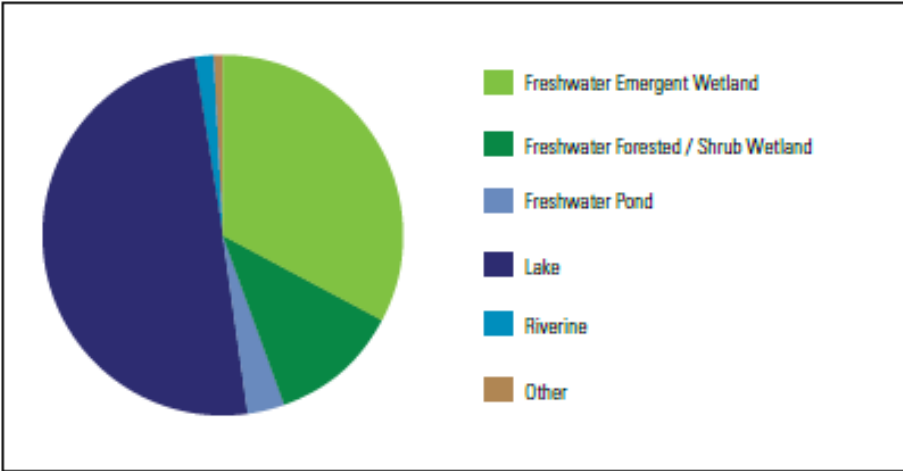


Figure 3. Distribution of total surface water and wetland area in the Lake Monona - Yahara River Watershed.

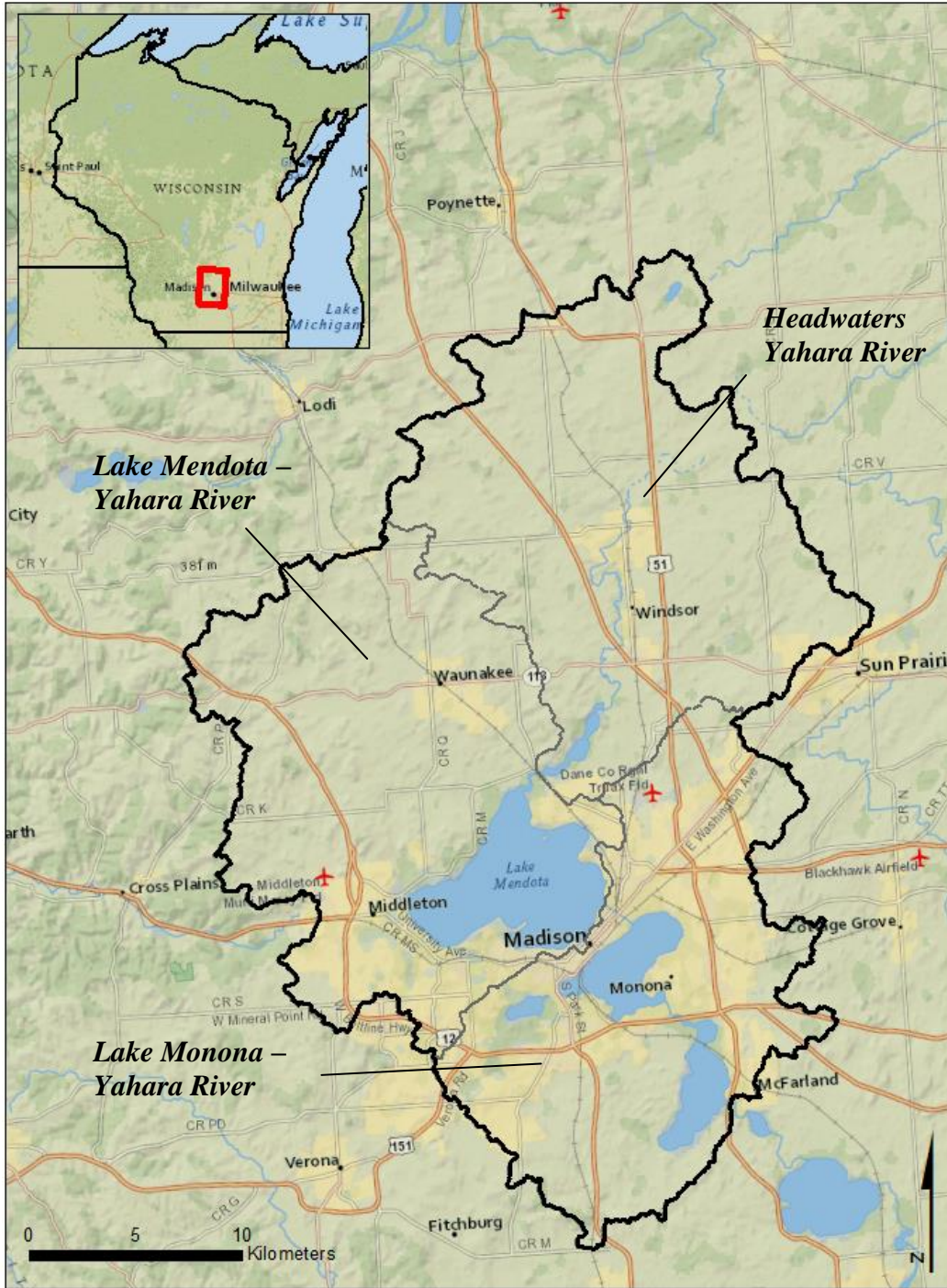


Figure 4. Madison area watersheds comprising the 208,010 acre study area.

References:

Cowardin, L.M., V. Carter, F.C. Golet, and E.T. Laroe. 1979. *Classification of Wetlands and Deepwater Habitats of the United States*. United States Department of the Interior, Fish and Wildlife Service, FWS/PBS 79/81, Washington, D.C.

Federal Geographic Data Committee. 2013. Classification of wetlands and deepwater habitats of the United States. FGDC-STD-004-2013. Second Edition. Wetlands Subcommittee, Federal Geographic Data Committee and U.S. Fish and Wildlife Service, Washington, DC.

Lichvar, R.W., M. Butterwick, N.C. Melvin, and W.N. Kirchner. 2014. *The National Wetland Plant List: 2014 Update of Wetland Ratings*. Phytoneuron 2014-41: 1-42.

National Wetlands Inventory Map Report for the Madison Area Watersheds, Wisconsin

Project ID: R09Y16P01

Project Title or Area:

Madison Area Watersheds:

- Headwaters Yahara River (HUC 0709000205)
- Lake Monona – Yahara River (HUC 0709000207)
- Lake Mendota – Yahara River (HUC 0709000206)

Source Imagery:

- National Agriculture Imagery Program (NAIP) – 2013, Wisconsin, one-meter resolution, color infrared (CIR), leaf-on

Collateral Data:

- US Fish & Wildlife Service - National Wetlands Inventory, 2008 (Dane Co.) and 1999 (Columbia Co.)
- NRCS – Soil Survey for Columbia and Dane Counties (SSURGO)
- USGS – NHD National Hydrography Dataset
- USGS – EROS Orthoimagery, sub-meter resolution, true-color, leaf-off
- USGS – 1:24K topographic quadrangles

Inventory Method:

This original mapping project was accomplished using ArcMap10.x software in a heads-up mapping process, using freely available public datasets. The wetlands mapping was based on interpretations of 2013 color-infrared leaf-on aerial imagery from the National Agriculture

Imagery Program (NAIP). During the initial mapping in spring of 2015, site visits were conducted to ground-truth wetland photo interpretations.

Following the digitizing, polygon errors were corrected using custom QAQC tools, and the data was checked using internal QC reviews. The mapping followed national standards, including the FGDC Wetlands Classification Standard, the FGDC Wetlands Mapping Standard, and the FWS Data Collection Requirements and Procedures. Wetland classifications were based on the FGDC Wetland Classification Standard (FGDC 2013).

Classification:

The wetland classifications for the Madison watersheds project area are in accordance with the Classification of Wetlands and Deepwater Habitats of the United States (FGDC 2013), based on the original document of the same name by Cowardin et al. (1979).

Data Limitations:

Because this map was created through the interpretation of aerial photography, the user is cautioned of certain limitations and potential inaccuracies in dataset:

- In general, changes in the landscape after the date of imagery will result in discrepancies from current conditions.
- A small percentage of wetland areas may have gone unidentified, especially in forested areas where identification is difficult under vegetative cover.
- Aerial photography was captured during spring of 2013 for leaf-on season, which may have obscured wetlands in certain areas. Additional leaf-off orthoimagery was used to aid this discrepancy.
- The target mapping unit for this project was 0.5 acre, meaning that some but not all wetlands smaller than 0.5 acres were identified.
- Water regimes should be considered approximate, as they are difficult to ascertain from aerial photography, and limited field verification was possible.

Description of wetland habitats

Besides the predominant class of lacustrine deepwater habitat, palustrine emergent wetlands were the most common wetland type in each of the three watersheds, followed by palustrine forested/shrub wetlands. Table 2 contains descriptions for all wetland types identified in the Madison watersheds study area. Table 3 contains descriptions of special modifier codes.

Table 2. Description of attribute values.

Wetland Types	Description
L1UBH	Permanently flooded, deepwater habitat greater than 20 acres in size.
L2ABH	Permanently flooded, littoral deepwater habitat greater than 20 acres in size with aquatic beds.
L2EM2H	Permanently flooded, littoral deepwater habitat greater than 20 acres in size with emergent aquatic vegetation (e.g. white water lily).
L2UBH	Permanently flooded, littoral deepwater habitat greater than 20 acres in size.
PABG	Intermittently exposed ponds vegetated with aquatic beds (e.g., pondweed).
PABH	Permanently flooded ponds vegetated with aquatic beds (e.g., pondweed).
PEM1/SS1A	Temporarily flooded depressions and floodplains characterized by a matrix of herbaceous and deciduous scrub-shrub vegetation.
PEM1/SS1C	Seasonally flooded depressions and floodplains characterized by a matrix of herbaceous and deciduous scrub-shrub vegetation.
PEM1A	Temporarily flooded wetlands dominated by deciduous herbaceous vegetation.
PEM1C	Seasonally flooded wetlands dominated by deciduous herbaceous vegetation.

Wetland Types	Description
PEM1E	Wetlands dominated by herbaceous vegetation where the surface is inundated for extended periods during the growing season, or when not inundated the water table is usually at or near the surface throughout the growing season.
PEM1F	Semi-permanently flooded depressions dominated by herbaceous vegetation.
Pf	Palustrine agricultural wetlands.
PFO1/EM1A	Temporarily flooded depressions and floodplains characterized by a matrix of herbaceous and forested vegetation.
PFO1/EM1C	Seasonally flooded depressions and floodplains characterized by a matrix of herbaceous and forested vegetation.
PFO1/SS1A	Temporarily flooded depressions and floodplains characterized by a matrix of scrub-shrub and forested vegetation.
PFO1/SS1C	Seasonally flooded depressions and floodplains characterized by a matrix of scrub-shrub and forested vegetation.
PFO1A	Temporarily flooded depressions and floodplains dominated by deciduous forested vegetation.
PFO1C	Seasonally flooded depressions and floodplains dominated by deciduous forested vegetation.
PFO1F	Semipermanently flooded depressions and floodplains dominated by deciduous forested vegetation.
PSS1/EM1A	Temporarily flooded depressions and floodplains characterized by a matrix of scrub-shrub and forested vegetation.
PSS1A	Temporarily flooded scrub-shrub wetland usually located in drainages.

Wetland Types	Description
PSS1C	Seasonally flooded scrub-shrub wetland usually located in drainages.
PSS1F	Semipermanently flooded scrub-shrub wetland usually located in drainages.
PUBF	Semi-permanently flooded ponds.
PUBG	Intermittently exposed flooded ponds.
PUBH	Permanently exposed flooded ponds.
R2UBF	Semipermanently flowing lower perennial rivers.
R2UBG	Intermittently exposed lower perennial rivers.
R2UBH	Permanently flowing lower perennial rivers.

Table 3. Description of special modifiers.

Special Modifier	Description
x	Excavated - Lies within a basin or channel excavated by humans.
d	Partially Drained/Ditched – The water level has been artificially lowered through the use of human-made ditches and drains, but the area is still classified as wetland because soil moisture is sufficient to support hydrophytes.
f	Farmed wetlands occur where the soil surface has been mechanically or physically altered for production of crops, but where hydrophytes would become reestablished if the farming were discontinued. Farmed wetlands should be classified as Palustrine-Farmed.
h	Diked/Impounded - Created or modified by a human-made barrier or dam which obstructs the inflow or outflow of water.
r	Artificial - Substrates classified as Rock Bottom, Unconsolidated Bottom, Rocky Shore and Unconsolidated Shore that were emplaced by man using natural or synthetic materials.

Appendix A. *List of wetland plants in Wisconsin (Lichvar 2014).*

Scientific Name	Common Name	Wetland Indicator Status*
<i>Abutilon theophrasti</i>	Velvetleaf	FACU
<i>Acer negundo</i>	Boxelder	FAC
<i>Acer rubrum</i>	Red maple	FAC
<i>Acer saccharinum</i>	Silver maple	FACW
<i>Acer saccharum</i>	Sugar maple	FACU
<i>Achillea millefolium</i>	Common yarrow	FACU
<i>Acorus americanus</i>	Sweetflag	OBL
<i>Adoxa moschatellina</i>	Muskroot	FAC
<i>Aesculus glabra</i>	Ohio buckeye	FAC
<i>Agalinis aspera</i>	Tall false foxglove	FACU
<i>Agalinis paupercula</i>	Small-flower false foxglove	OBL
<i>Agalinis purpurea</i>	Purple false foxglove	FACW
<i>Agastache nepetoides</i>	Yellow giant-hyssop	FACU

Scientific Name	Common Name	Wetland Indicator Status*
<i>Ageratina altissima</i>	White snakeroot	FACU
<i>Agrimonia gryposepala</i>	Tall hairy groovebur	FACU
<i>Agrimonia parviflora</i>	Small-flower grooveburr	FAC
<i>Agrostis gigantea</i>	Redtop	FACW
<i>Agrostis hyemalis</i>	Winter bent	FAC
<i>Agrostis perennans</i>	Upland bent	FACU
<i>Agrostis scabra</i>	Rough bent	FAC
<i>Agrostis stolonifera</i>	Spreading bent	FACW
<i>Alisma gramineum</i>	Narrow-leaf water-plantain	OBL
<i>Alisma subcordatum</i>	Subcordate water-plantain	OBL
<i>Alliaria petiolata</i>	Garlic-mustard	FACU
<i>Allium canadense</i>	Meadow garlic	FACU
<i>Allium tricoccum</i>	Small white leek	FACU
<i>Allium vineale</i>	Field garlic	FACU
<i>Alnus glutinosa</i>	European alder	FACW

Scientific Name	Common Name	Wetland Indicator Status*
<i>Alnus incana</i>	Speckled alder	FACW
<i>Alopecurus aequalis</i>	Short-awn meadow-foxtail	OBL
<i>Alopecurus geniculatus</i>	Water foxtail	OBL
<i>Alopecurus pratensis</i>	Field meadow-foxtail	FAC
<i>Althaea officinalis</i>	Common marsh-mallow	FAC
<i>Amaranthus arenicola</i>	Sandhill amaranth	FACU
<i>Amaranthus retroflexus</i>	Red-root amaranth	FACU
<i>Amaranthus spinosus</i>	Spiny amaranth	FACU
<i>Amaranthus tuberculatus</i>	Rough-fruit amaranth	OBL
<i>Ambrosia trifida</i>	Great ragweed	FAC
<i>Amelanchier arborea</i>	Downy service-berry	FACU
<i>Amorpha fruticosa</i>	False indigo-bush	FACW
<i>Amphicarpaea bracteata</i>	American hog-peanut	FAC
<i>Andropogon gerardii</i>	Big bluestem	FACU
<i>Anemone canadensis</i>	Round-leaf thimbleweed	FACW

Scientific Name	Common Name	Wetland Indicator Status*
<i>Angelica atropurpurea</i>	Purple-stem angelica	OBL
<i>Anthemis cotula</i>	Stinking chamomile	FACU
<i>Anthoxanthum odoratum</i>	Sweet vernal grass	FACU
<i>Apios americana</i>	Groundnut	FACW
<i>Aplectrum hyemale</i>	Adam-and-eve	FAC
<i>Apocynum cannabinum</i>	Indian-hemp	FAC
<i>Arenaria serpyllifolia</i>	Thyme-leaf sandwort	FAC
<i>Arisaema dracontium</i>	Greendragon	FACW
<i>Arisaema triphyllum</i>	Jack-in-the-pulpit	FAC
<i>Arnoglossum plantagineum</i>	Groove-stem indian-plantain	FAC
<i>Aronia melanocarpa</i>	Black chokeberry	FAC
<i>Arrhenatherum elatius</i>	Tall oat grass	FACU
<i>Artemisia biennis</i>	Biennial wormwood	FACW
<i>Asclepias incarnata</i>	Swamp milkweed	OBL
<i>Asplenium platyneuron</i>	Ebony spleenwort	FACU

Scientific Name	Common Name	Wetland Indicator Status*
<i>Astragalus canadensis</i>	Canadian milk-vetch	FAC
<i>Atriplex patula</i>	Fat-hen saltbush	FACW
<i>Barbarea vulgaris</i>	Garden yellow-rocket	FAC
<i>Bartonia virginica</i>	Yellow screwstem	FACW
<i>Beckmannia syzigachne</i>	American sloughgrass	OBL
<i>Berberis thunbergii</i>	Japanese barberry	FACU
<i>Berula erecta</i>	Cut-leaf-water-parsnip	OBL
<i>Betula pumila</i>	Bog birch	OBL
<i>Betula X purpusii</i>	Purpus' birch	OBL
<i>Bidens aristosa</i>	Bearded beggarticks	FACW
<i>Bidens cernua</i>	Nodding beggarticks	OBL
<i>Bidens discoidea</i>	Small beggarticks	FACW
<i>Bidens frondosa</i>	Devil's beggarticks	FACW
<i>Bidens tripartita</i>	Three-lobed beggarticks	FACW
<i>Blephilia hirsuta</i>	Hairy woodmint	FACU

Scientific Name	Common Name	Wetland Indicator Status*
<i>Boehmeria cylindrica</i>	Small-spike false nettle	OBL
<i>Boltonia asteroides</i>	White doll's-daisy	FACW
<i>Botrychium simplex</i>	Least moonwort	FAC
<i>Brasenia schreberi</i>	Watershield	OBL
<i>Bromus ciliatus</i>	Fringed brome	FACW
<i>Bromus kalmii</i>	Kalm's brome	FAC
<i>Bromus latiglumis</i>	Early-leaf brome	FACW
<i>Bromus pubescens</i>	Hairy woodland brome	FACU
<i>Calamagrostis canadensis</i>	Bluejoint	OBL
<i>Calla palustris</i>	Water arum	OBL
<i>Callitriche hermaphroditica</i>	Autumn water-starwort	OBL
<i>Callitriche heterophylla</i>	Larger water-starwort	OBL
<i>Callitriche palustris</i>	Spiny water-starwort	OBL
<i>Caltha natans</i>	Floating marsh-marigold	OBL
<i>Caltha palustris</i>	Yellow marsh-marigold	OBL

Scientific Name	Common Name	Wetland Indicator Status*
<i>Calystegia sepium</i>	Hedge false bindweed	FAC
<i>Camassia scilloides</i>	Atlantic camas	FAC
<i>Campanula aparinoides</i>	Marsh bellflower	OBL
<i>Campsis radicans</i>	Trumpet-creeper	FAC
<i>Cardamine bulbosa</i>	Bulbous bittercress	OBL
<i>Cardamine concatenata</i>	Cut-leaf toothwort	FACU
<i>Cardamine douglassii</i>	Limestone bittercress	FACW
<i>Cardamine pensylvanica</i>	Pennsylvania bittercress	FACW
<i>Carex alopecoidea</i>	Fox-tail sedge	FACW
<i>Carex annectens</i>	Yellow-fruit sedge	FACW
<i>Carex aquatilis</i>	Water sedge	OBL
<i>Carex arcta</i>	Northern clustered sedge	OBL
<i>Carex atherodes</i>	Slough sedge	OBL
<i>Carex aurea</i>	Golden-fruit sedge	FACW
<i>Carex bicknellii</i>	Bicknell's sedge	FAC

Scientific Name	Common Name	Wetland Indicator Status*
<i>Carex blanda</i>	Eastern woodland sedge	FAC
<i>Carex brevior</i>	Short-beak sedge	FAC
<i>Carex bromoides</i>	Brome-like sedge	FACW
<i>Carex brunnescens</i>	Brownish sedge	FACW
<i>Carex buxbaumii</i>	Brown bog sedge	OBL
<i>Carex canescens</i>	Hoary sedge	OBL
<i>Carex castanea</i>	Chestnut-color sedge	FACW
<i>Carex cephaloidea</i>	Thin-leaf sedge	FACU
<i>Carex cephalophora</i>	Oval-leaf sedge	FACU
<i>Carex chordorrhiza</i>	Creeping sedge	OBL
<i>Carex comosa</i>	Bearded sedge	OBL
<i>Carex conoidea</i>	Open-field sedge	FACW
<i>Carex crawei</i>	Crawe's sedge	FACW
<i>Carex crinita</i>	Fringed sedge	OBL
<i>Carex cristatella</i>	Crested sedge	FACW

Scientific Name	Common Name	Wetland Indicator Status*
<i>Carex crus-corvi</i>	Raven-foot sedge	OBL
<i>Carex cryptolepis</i>	Northeastern sedge	OBL
<i>Carex davisii</i>	Davis' sedge	FAC
<i>Carex debilis</i>	White-edge sedge	FACW
<i>Carex deweyana</i>	Round-fruit short-scale sedge	FACU
<i>Carex diandra</i>	Lesser panicled sedge	OBL
<i>Carex digitalis</i>	Slender woodland sedge	UPL
<i>Carex emoryi</i>	Emory's sedge	OBL
<i>Carex exilis</i>	Coastal sedge	OBL
<i>Carex festucacea</i>	Fescue sedge	FAC
<i>Carex flava</i>	Yellow sedge	OBL
<i>Carex granularis</i>	Limestone-meadow sedge	FACW
<i>Carex grayi</i>	Asa gray's sedge	FACW
<i>Carex gynocrates</i>	Northern bog sedge	OBL
<i>Carex haydenii</i>	Cloud sedge	OBL

Scientific Name	Common Name	Wetland Indicator Status*
<i>Carex hystericina</i>	Porcupine sedge	OBL
<i>Carex intumescens</i>	Greater bladder sedge	FACW
<i>Carex lacustris</i>	Lakebank sedge	OBL
<i>Carex laeviconica</i>	Smooth-cone sedge	OBL
<i>Carex laevivaginata</i>	Smooth-sheath sedge	OBL
<i>Carex lasiocarpa</i>	Woolly-fruit sedge	OBL
<i>Carex lenticularis</i>	Shore sedge	OBL
<i>Carex leptalea</i>	Bristly-stalk sedge	OBL
<i>Carex leptoneuria</i>	Nerveless woodland sedge	FAC
<i>Carex limosa</i>	Mud sedge	OBL
<i>Carex livida</i>	Livid sedge	OBL
<i>Carex longii</i>	Long's sedge	OBL
<i>Carex lupuliformis</i>	False hop sedge	OBL
<i>Carex lupulina</i>	Hop sedge	OBL
<i>Carex lurida</i>	Shallow sedge	OBL

Scientific Name	Common Name	Wetland Indicator Status*
<i>Carex meadii</i>	Mead's sedge	FAC
<i>Carex michauxiana</i>	Michaux's sedge	OBL
<i>Carex molesta</i>	Troublesome sedge	FAC
<i>Carex muskingumensis</i>	Muskingum sedge	OBL
<i>Carex normalis</i>	Larger straw sedge	FACW
<i>Carex oligosperma</i>	Few-seed sedge	OBL
<i>Carex pauciflora</i>	Few-flower sedge	OBL
<i>Carex prairea</i>	Prairie sedge	FACW
<i>Carex prasina</i>	Drooping sedge	OBL
<i>Carex projecta</i>	Necklace sedge	FACW
<i>Carex retrorsa</i>	Retrorse sedge	OBL
<i>Carex richardsonii</i>	Richardson's sedge	UPL
<i>Carex rostrata</i>	Swollen beaked sedge	OBL
<i>Carex sartwellii</i>	Sartwell's sedge	OBL
<i>Carex scabrata</i>	Eastern rough sedge	OBL

Scientific Name	Common Name	Wetland Indicator Status*
<i>Carex schweinitzii</i>	Schweinitz's sedge	OBL
<i>Carex sprengei</i>	Long-beak sedge	FAC
<i>Carex sterilis</i>	Dioecious sedge	OBL
<i>Carex stipata</i>	Stalk-grain sedge	OBL
<i>Carex straminea</i>	Straw sedge	OBL
<i>Carex stricta</i>	Uptight sedge	OBL
<i>Carex suberecta</i>	Prairie straw sedge	OBL
<i>Carex swanii</i>	Swan's sedge	FACU
<i>Carex sychnocephala</i>	Many-head sedge	FACW
<i>Carex tenera</i>	Slender sedge	FAC
<i>Carex tetanica</i>	Rigid sedge	FACW
<i>Carex torreyi</i>	Torrey's sedge	FACU
<i>Carex tribuloides</i>	Blunt broom sedge	FACW
<i>Carex trichocarpa</i>	Hairy-fruit sedge	OBL
<i>Carex tuckermanii</i>	Tuckerman's sedge	OBL

Scientific Name	Common Name	Wetland Indicator Status*
<i>Carex typhina</i>	Cat-tail sedge	OBL
<i>Carex vesicaria</i>	Inflated sedge	OBL
<i>Carex viridula</i>	Little green sedge	OBL
<i>Carex vulpinoidea</i>	Fox sedge	OBL
<i>Carex woodii</i>	Pretty sedge	FACU
<i>Carpinus caroliniana</i>	American hornbeam	FAC
<i>Carya cordiformis</i>	Bitter-nut hickory	FAC
<i>Carya ovata</i>	Shag-bark hickory	FACU
<i>Castilleja coccinea</i>	Scarlet indian-paintbrush	FAC
<i>Catabrosa aquatica</i>	Brookgrass	OBL
<i>Catalpa speciosa</i>	Northern catalpa	FACU
<i>Celtis occidentalis</i>	Common hackberry	FAC
<i>Centaurium pulchellum</i>	Branching centaury	FAC
<i>Cephalanthus occidentalis</i>	Common buttonbush	OBL
<i>Cerastium nutans</i>	Nodding mouse-ear chickweed	FACU

Scientific Name	Common Name	Wetland Indicator Status*
<i>Chaerophyllum procumbens</i>	Spreading chervil	FAC
<i>Chamaecrista fasciculata</i>	Partridge pea	FACU
<i>Chelone glabra</i>	White turtlehead	OBL
<i>Cicuta bulbifera</i>	Bulblet-bearing water-hemlock	OBL
<i>Cicuta maculata</i>	Spotted water-hemlock	OBL
<i>Cirsium muticum</i>	Swamp thistle	OBL
<i>Cirsium vulgare</i>	Bull thistle	FACU
<i>Cladium mariscoides</i>	Smooth saw-grass	OBL
<i>Claytonia caroliniana</i>	Broad-leaf springbeauty	FACU
<i>Clematis virginiana</i>	Virginia virgin's-bower	FAC
<i>Coeloglossum viride</i>	Long-bract green orchid	FAC
<i>Comandra umbellata</i>	Bastard-toadflax	FACU
<i>Comarum palustre</i>	Marsh cinquefoil	OBL
<i>Commelina communis</i>	Asiatic dayflower	FAC
<i>Conioselinum chinense</i>	Chinese hemlock-parsley	FACW

Scientific Name	Common Name	Wetland Indicator Status*
<i>Coptis trifolia</i>	Three-leaf goldthread	FACW
<i>Coreopsis lanceolata</i>	Lance-leaf tickseed	FACU
<i>Coreopsis tinctoria</i>	Golden tickseed	FACU
<i>Coreopsis tripteris</i>	Tall tickseed	FAC
<i>Cornus canadensis</i>	Canadian bunchberry	FAC
<i>Cornus racemosa</i>	Gray dogwood	FAC
<i>Corylus americana</i>	American hazelnut	FACU
<i>Crataegus mollis</i>	Downy hawthorn	FAC
<i>Crypsis schoenoides</i>	Swamp prickle grass	OBL
<i>Cryptotaenia canadensis</i>	Canadian honewort	FAC
<i>Cyperus bipartitus</i>	Shining flat sedge	FACW
<i>Cyperus diandrus</i>	Umbrella flat sedge	OBL
<i>Cyperus echinatus</i>	Globose flat sedge	FAC
<i>Cyperus erythrorhizos</i>	Red-root flat sedge	OBL
<i>Cyperus esculentus</i>	Chufa	FACW

Scientific Name	Common Name	Wetland Indicator Status*
<i>Cyperus odoratus</i>	Rusty flat sedge	OBL
<i>Cyperus schweinitzii</i>	Schweinitz's flat sedge	FACU
<i>Cyperus squarrosus</i>	Awned flat sedge	OBL
<i>Cyperus strigosus</i>	Straw-color flat sedge	FACW
<i>Cypripedium arietinum</i>	Ram's-head lady's-slipper	FACW
<i>Cypripedium parviflorum</i>	Small yellow lady's-slipper	FAC
<i>Cypripedium reginae</i>	Showy lady's-slipper	FACW
<i>Dasistoma macrophylla</i>	Mullein-foxglove	FACU
<i>Decodon verticillatus</i>	Swamp-loosestrife	OBL
<i>Deparia acrostichoides</i>	Silver false spleenwort	FAC
<i>Desmodium canadense</i>	Showy tick-trefoil	FAC
<i>Dichanthelium acuminatum</i>	Tapered panic grass	FAC
<i>Dichanthelium boreale</i>	Northern panic grass	FAC
<i>Dichanthelium dichotomum</i>	Cypress panic grass	FAC
<i>Dichanthelium leibergii</i>	Leiberg's panic grass	FACU

Scientific Name	Common Name	Wetland Indicator Status*
<i>Dichanthelium oligosanthes</i>	Heller's panic grass	FACU
<i>Dichanthelium ovale</i>	Egg-leaf panic grass	FACU
<i>Didiplis diandra</i>	Water-purslane	OBL
<i>Digitaria ischaemum</i>	Smooth crab grass	FACU
<i>Digitaria sanguinalis</i>	Hairy crab grass	FACU
<i>Diodia teres</i>	Rough buttonweed	FACU
<i>Diplazium pycnocarpon</i>	Glade fern	FAC
<i>Dirca palustris</i>	Eastern leatherwood	FAC
<i>Distichlis spicata</i>	Saltgrass	FACW
<i>Dodecatheon meadia</i>	Pride-of-ohio	FACU
<i>Drosera intermedia</i>	Spoon-leaf sundew	OBL
<i>Drosera linearis</i>	Slender-leaf sundew	OBL
<i>Dryopteris carthusiana</i>	Spinulose wood fern	FACW
<i>Dryopteris cristata</i>	Crested wood fern	OBL
<i>Dulichium arundinaceum</i>	Three-way sedge	OBL

Scientific Name	Common Name	Wetland Indicator Status*
<i>Echinochloa crus-galli</i>	Barnyard grass	FAC
<i>Echinochloa muricata</i>	Rough barnyard grass	OBL
<i>Echinochloa walteri</i>	Coast cock's-spur grass	OBL
<i>Echinocystis lobata</i>	Wild cucumber	FACW
<i>Eclipta prostrata</i>	False daisy	FACW
<i>Elatine minima</i>	Small waterwort	OBL
<i>Eleocharis acicularis</i>	Needle spike-rush	OBL
<i>Eleocharis compressa</i>	Flat-stem spike-rush	FACW
<i>Eleocharis engelmannii</i>	Engelmann's spike-rush	FACW
<i>Eleocharis equisetoides</i>	Horsetail-spike-rush	OBL
<i>Eleocharis intermedia</i>	Matted spike-rush	OBL
<i>Eleocharis nitida</i>	Quill spike-rush	OBL
<i>Eleocharis obtusa</i>	Blunt spike-rush	OBL
<i>Eleocharis olivacea</i>	Bright-green spike-rush	OBL
<i>Eleocharis palustris</i>	Common spike-rush	OBL

Scientific Name	Common Name	Wetland Indicator Status*
<i>Eleocharis parvula</i>	Dwarf spike-rush	OBL
<i>Eleocharis quadrangulata</i>	Square-stem spike-rush	OBL
<i>Eleocharis quinqueflora</i>	Few-flower spike-rush	OBL
<i>Eleocharis robbinsii</i>	Robbins' spike-rush	OBL
<i>Eleocharis rostellata</i>	Beaked spike-rush	OBL
<i>Eleocharis wolfii</i>	Wolf's spike-rush	OBL
<i>Eleusine indica</i>	Indian goose grass	FACU
<i>Ellisia nyctelea</i>	False baby-blue-eyes	FAC
<i>Elymus canadensis</i>	Nodding wild rye	FACU
<i>Elymus riparius</i>	River-bank wild rye	FACW
<i>Elymus villosus</i>	Hairy wild rye	FACU
<i>Elymus virginicus</i>	Virginia wild rye	FACW
<i>Enemion biternatum</i>	Eastern false rue-anemone	FAC
<i>Epilobium coloratum</i>	Purple-leaf willowherb	OBL
<i>Epilobium hirsutum</i>	Great-hairy willowherb	FACW

Scientific Name	Common Name	Wetland Indicator Status*
<i>Epilobium leptophyllum</i>	Linear-leaf willowherb	OBL
<i>Epilobium palustre</i>	Marsh willowherb	OBL
<i>Equisetum arvense</i>	Field horsetail	FAC
<i>Equisetum fluviatile</i>	Water horsetail	OBL
<i>Equisetum hyemale</i>	Tall scouring-rush	FAC
<i>Equisetum laevigatum</i>	Smooth scouring-rush	FACW
<i>Equisetum palustre</i>	Marsh horsetail	FACW
<i>Equisetum sylvaticum</i>	Woodland horsetail	FACW
<i>Equisetum X ferrissii</i>	Intermediate scouring-rush	FACW
<i>Equisetum X litorale</i>	Shore horsetail	OBL
<i>Equisetum X mackaii</i>	Rough-tooth horsetail	FACW
<i>Equisetum X nelsonii</i>	Nelson's variegated horsetail	FAC
<i>Eragrostis cilianensis</i>	Stink grass	FACU
<i>Eragrostis frankii</i>	Frank's love grass	FACW
<i>Eragrostis hypnoides</i>	Teal love grass	OBL

Scientific Name	Common Name	Wetland Indicator Status*
<i>Eragrostis mexicana</i>	Mexican love grass	FAC
<i>Eragrostis pectinacea</i>	Tufted love grass	FAC
<i>Eragrostis pilosa</i>	Indian love grass	FACU
<i>Eragrostis spectabilis</i>	Purple love grass	UPL
<i>Erigeron annuus</i>	Eastern daisy fleabane	FACU
<i>Erigeron philadelphicus</i>	Philadelphia fleabane	FAC
<i>Erigeron strigosus</i>	Prairie fleabane	FACU
<i>Eriocaulon aquaticum</i>	Seven-angle pipewort	OBL
<i>Eriophorum angustifolium</i>	Narrow-leaf cotton-grass	OBL
<i>Eriophorum gracile</i>	Slender cotton-grass	OBL
<i>Eriophorum virginicum</i>	Tawny cotton-grass	OBL
<i>Eriophorum viridicarinatum</i>	Green-keel cotton-grass	OBL
<i>Eryngium yuccifolium</i>	Rattlesnake-master	FAC
<i>Erysimum cheiranthoides</i>	Worm-seed wallflower	FACU
<i>Eupatorium perfoliatum</i>	Common boneset	FACW

Scientific Name	Common Name	Wetland Indicator Status*
<i>Eupatorium serotinum</i>	Late-flowering thoroughwort	FAC
<i>Euphorbia marginata</i>	Snow-on-the-mountain	FACU
<i>Euphorbia spathulata</i>	Blunt-leaf spurge	FACU
<i>Euthamia graminifolia</i>	Flat-top fragrant-golden-rod	FAC
<i>Euthamia gymnospermoides</i>	Viscid fragrant-golden-rod	FACW
<i>Fagus grandifolia</i>	Beech	FACU
<i>Festuca paradoxa</i>	Clustered fescue	FAC
<i>Festuca rubra</i>	Red fescue	FACU
<i>Festuca subverticillata</i>	Nodding fescue	FACU
<i>Filipendula rubra</i>	Queen-of-the-prairie	FACW
<i>Fimbristylis autumnalis</i>	Slender fimbry	FACW
<i>Floerkea proserpinacoides</i>	False mermaidweed	FAC
<i>Fragaria virginiana</i>	Virginia strawberry	FACU
<i>Fraxinus americana</i>	White ash	FACU
<i>Fraxinus nigra</i>	Black ash	FACW

Scientific Name	Common Name	Wetland Indicator Status*
<i>Fraxinus pennsylvanica</i>	Green ash	FACW
<i>Fuirena pumila</i>	Dwarf umbrella sedge	OBL
<i>Galium aparine</i>	Catchweed bedstraw	FACU
<i>Galium asprellum</i>	Rough bedstraw	OBL
<i>Galium boreale</i>	Northern bedstraw	FAC
<i>Galium brevipes</i>	Limestone swamp bedstraw	OBL
<i>Galium concinnum</i>	Shining bedstraw	FACU
<i>Galium labradoricum</i>	Northern bog bedstraw	OBL
<i>Galium palustre</i>	Marsh bedstraw	OBL
<i>Galium tinctorium</i>	Stiff marsh bedstraw	OBL
<i>Galium trifidum</i>	Three-petal bedstraw	FACW
<i>Galium triflorum</i>	Sweet-scented bedstraw	FACU
<i>Gamochoeta purpurea</i>	Purple cudweed	FACU
<i>Gentiana saponaria</i>	Soapwort gentian	FACW
<i>Gentianella quinquefolia</i>	Stiff gentian	FAC

Scientific Name	Common Name	Wetland Indicator Status*
<i>Gentianopsis crinita</i>	Greater fringed-gentian	FACW
<i>Geranium maculatum</i>	Spotted crane's-bill	FACU
<i>Geum aleppicum</i>	Yellow avens	FAC
<i>Geum canadense</i>	White avens	FAC
<i>Geum laciniatum</i>	Rough avens	FACW
<i>Geum macrophyllum</i>	Large-leaf avens	FACW
<i>Geum rivale</i>	Purple avens	OBL
<i>Geum vernum</i>	Spring avens	FACU
<i>Gleditsia triacanthos</i>	Honey-locust	FAC
<i>Glyceria borealis</i>	Small floating manna grass	OBL
<i>Glyceria canadensis</i>	Rattlesnake manna grass	OBL
<i>Glyceria striata</i>	Fowl manna grass	OBL
<i>Glycyrrhiza lepidota</i>	American licorice	FACU
<i>Gratiola aurea</i>	Golden hedge-hyssop	OBL
<i>Gratiola neglecta</i>	Clammy hedge-hyssop	OBL

Scientific Name	Common Name	Wetland Indicator Status*
<i>Grindelia squarrosa</i>	Curly-cup gumweed	FACU
<i>Gymnocarpium dryopteris</i>	Oak fern	FACU
<i>Hackelia virginiana</i>	Virginia stickseed	FACU
<i>Halenia deflexa</i>	American spurred-gentian	FAC
<i>Helenium amarum</i>	Five-leaf sneezeweed	FACU
<i>Helenium autumnale</i>	Fall sneezeweed	FACW
<i>Helenium flexuosum</i>	Purple-head sneezeweed	FAC
<i>Helianthus annuus</i>	Common sunflower	FACU
<i>Helianthus giganteus</i>	Giant sunflower	FACW
<i>Helianthus grosseserratus</i>	Saw-tooth sunflower	FACW
<i>Helianthus maximiliani</i>	Maximilian's sunflower	UPL
<i>Helianthus occidentalis</i>	Few-leaf sunflower	FACU
<i>Helianthus tuberosus</i>	Jerusalem-artichoke	FACU
<i>Heracleum maximum</i>	Cow-parsnip	FACW
<i>Heteranthera dubia</i>	Water star-grass	OBL

Scientific Name	Common Name	Wetland Indicator Status*
<i>Hibiscus laevis</i>	Halberd-leaf rose-mallow	OBL
<i>Hibiscus moscheutos</i>	Crimson-eyed rose-mallow	OBL
<i>Hippuris vulgaris</i>	Common mare's-tail	OBL
<i>Holcus lanatus</i>	Common velvet grass	FACU
<i>Hordeum jubatum</i>	Fox-tail barley	FAC
<i>Houstonia caerulea</i>	Quaker-ladies	FACU
<i>Humulus japonicus</i>	Japanese hop	FACU
<i>Hybanthus concolor</i>	Green violet	FACU
<i>Hydrocotyle americana</i>	American marsh-pennywort	OBL
<i>Hypericum ascyron</i>	Great st. john's-wort	FAC
<i>Hypericum boreale</i>	Northern st. john's-wort	OBL
<i>Hypericum ellipticum</i>	Pale st. john's-wort	OBL
<i>Hypericum majus</i>	Large canadian st. john's-wort	FACW
<i>Hypericum mutilum</i>	Slender st. john's-wort	FACW
<i>Hypericum sphaerocarpum</i>	Round-seed st. john's-wort	FACU

Scientific Name	Common Name	Wetland Indicator Status*
<i>Hypoxis hirsuta</i>	Eastern yellow star-grass	FAC
<i>Ilex verticillata</i>	Common winterberry	FACW
<i>Impatiens capensis</i>	Spotted touch-me-not	FACW
<i>Impatiens pallida</i>	Pale touch-me-not	FACW
<i>Iodanthus pinnatifidus</i>	Purple-rocket	FACW
<i>Ipomoea hederacea</i>	Ivy-leaf morning-glory	FAC
<i>Ipomoea purpurea</i>	Common morning-glory	FACU
<i>Iris pseudacorus</i>	Yellow iris	OBL
<i>Iris versicolor</i>	Blueflag	OBL
<i>Iris virginica</i>	Virginia blueflag	OBL
<i>Isoetes lacustris</i>	Western lake quillwort	OBL
<i>Juglans cinerea</i>	Butternut	FACU
<i>Juglans nigra</i>	Black walnut	FACU
<i>Juncus acuminatus</i>	Taper-tip rush	OBL
<i>Juncus alpinoarticulatus</i>	Richardson's rush	OBL

Scientific Name	Common Name	Wetland Indicator Status*
<i>Juncus balticus</i>	Baltic rush	OBL
<i>Juncus brachycephalus</i>	Small-head rush	OBL
<i>Juncus bufonius</i>	Toad rush	FACW
<i>Juncus canadensis</i>	Canadian rush	OBL
<i>Juncus compressus</i>	Flattened rush	FACW
<i>Juncus effusus</i>	Soft rush	OBL
<i>Juncus ensifolius</i>	Sword-leaf rush	FACW
<i>Juncus filiformis</i>	Thread rush	FACW
<i>Juncus gerardii</i>	Saltmeadow rush	OBL
<i>Juncus interior</i>	Inland rush	FAC
<i>Juncus marginatus</i>	Grass-leaf rush	FACW
<i>Juncus nodatus</i>	Stout rush	OBL
<i>Juncus nodosus</i>	Knotted rush	OBL
<i>Juncus stygius</i>	Moor rush	OBL
<i>Juncus tenuis</i>	Poverty rush	FAC

Scientific Name	Common Name	Wetland Indicator Status*
<i>Juncus torreyi</i>	Torrey's rush	FACW
<i>Juncus vaseyi</i>	Vasey's rush	FACW
<i>Juniperus horizontalis</i>	Creeping juniper	FACU
<i>Kalmia polifolia</i>	Bog-laurel	OBL
<i>Krigia biflora</i>	Two-flower dwarf-dandelion	FACU
<i>Lactuca biennis</i>	Wild blue lettuce	FAC
<i>Lactuca canadensis</i>	Tall yellow lettuce	FACU
<i>Lactuca floridana</i>	Woodland lettuce	FACU
<i>Lactuca serriola</i>	Prickly lettuce	FACU
<i>Laportea canadensis</i>	Canadian wood-nettle	FACW
<i>Lathyrus palustris</i>	Marsh vetchling	FACW
<i>Lathyrus venosus</i>	Smooth veiny peavine	FAC
<i>Leersia lenticularis</i>	Catchfly grass	OBL
<i>Leersia oryzoides</i>	Rice cut grass	OBL
<i>Leersia virginica</i>	White grass	FACW

Scientific Name	Common Name	Wetland Indicator Status*
<i>Lemna aequinoctialis</i>	Lesser duckweed	OBL
<i>Lemna perpusilla</i>	Minute duckweed	OBL
<i>Lemna trisulca</i>	Star duckweed	OBL
<i>Lepidium densiflorum</i>	Dense-flower pepper-grass	FACU
<i>Lepidium perfoliatum</i>	Clasping pepper-grass	FACU
<i>Lepidium virginicum</i>	Poor-man's pepper-grass	FACU
<i>Lespedeza capitata</i>	Round-head bush-clover	FACU
<i>Leymus arenarius</i>	Sea lyme grass	FACU
<i>Liatris pycnostachya</i>	Cat-tail gayfeather	FAC
<i>Liatris spicata</i>	Spiked gayfeather	FAC
<i>Lilium michiganense</i>	Canada lily	FACW
<i>Lilium philadelphicum</i>	Wood lily	FAC
<i>Lindernia dubia</i>	Yellow-seed false pimpernel	OBL
<i>Liparis liliifolia</i>	Large twayblade	FACU
<i>Liparis loeselii</i>	Fen orchid	FACW

Scientific Name	Common Name	Wetland Indicator Status*
<i>Lipocarpa drummondii</i>	Drummond's halfchaff sedge	FACW
<i>Lipocarpa micrantha</i>	Small-flower halfchaff sedge	OBL
<i>Lobelia cardinalis</i>	Cardinal-flower	OBL
<i>Lobelia dortmanna</i>	Water lobelia	OBL
<i>Lobelia inflata</i>	Indian-tobacco	FACU
<i>Lobelia siphilitica</i>	Great blue lobelia	FACW
<i>Lobelia spicata</i>	Pale-spike lobelia	FAC
<i>Lolium perenne</i>	Perennial rye grass	FACU
<i>Lonicera japonica</i>	Japanese honeysuckle	FACU
<i>Lotus corniculatus</i>	Garden bird's-foot-trefoil	FACU
<i>Ludwigia decurrens</i>	Wing-leaf primrose-willow	OBL
<i>Ludwigia palustris</i>	Marsh primrose-willow	OBL
<i>Ludwigia polycarpa</i>	Many-fruit primrose-willow	OBL
<i>Lupinus polyphyllus</i>	Large-leaved lupine	FACU
<i>Luzula multiflora</i>	Common wood-rush	FACU

Scientific Name	Common Name	Wetland Indicator Status*
<i>Lycopus americanus</i>	Cut-leaf water-horehound	OBL
<i>Lycopus asper</i>	Rough water-horehound	OBL
<i>Lycopus uniflorus</i>	Northern water-horehound	OBL
<i>Lycopus virginicus</i>	Virginia water-horehound	OBL
<i>Lysimachia hybrida</i>	Lowland yellow-loosestrife	OBL
<i>Lysimachia lanceolata</i>	Lance-leaf loosestrife	FAC
<i>Lysimachia quadriflora</i>	Four-flower loosestrife	OBL
<i>Lysimachia quadrifolia</i>	Whorled loosestrife	FACU
<i>Lysimachia terrestris</i>	Swampcandles	OBL
<i>Lysimachia thyrsiflora</i>	Tufted loosestrife	OBL
<i>Lythrum salicaria</i>	Purple loosestrife	OBL
<i>Maianthemum stellatum</i>	Starry false solomon's-seal	FAC
<i>Marrubium vulgare</i>	Common horehound	FACU
<i>Matricaria discoidea</i>	Pineapple-weed	FACU
<i>Melilotus officinalis</i>	White sweet-clover	FACU

Scientific Name	Common Name	Wetland Indicator Status*
<i>Mentha aquatica</i>	Water mint	OBL
<i>Mentha arvensis</i>	Field mint	FACW
<i>Mentha X piperita</i>	Peppermint	OBL
<i>Menyanthes trifoliata</i>	Buck-bean	OBL
<i>Mertensia paniculata</i>	Tall bluebells	FAC
<i>Mertensia virginica</i>	Virginia bluebells	FAC
<i>Mimulus glabratus</i>	Round-leaf monkey-flower	OBL
<i>Mimulus ringens</i>	Allegheny monkey-flower	OBL
<i>Mirabilis nyctaginea</i>	Heart-leaf four-o'clock	UPL
<i>Mitchella repens</i>	Partridge-berry	FACU
<i>Mitella nuda</i>	Naked bishop's-cap	FACW
<i>Moehringia lateriflora</i>	Blunt-leaf grove-sandwort	FACU
<i>Monarda didyma</i>	Oswego tea beebalm	FACU
<i>Monarda fistulosa</i>	Wild bergamot beebalm	FACU
<i>Morus rubra</i>	Red mulberry	FACU

Scientific Name	Common Name	Wetland Indicator Status*
<i>Muhlenbergia asperifolia</i>	Alkali muhly	FACW
<i>Muhlenbergia glomerata</i>	Marsh muhly	OBL
<i>Muhlenbergia mexicana</i>	Mexican muhly	FACW
<i>Muhlenbergia richardsonis</i>	Mat muhly	FACW
<i>Muhlenbergia schreberi</i>	Nimblewill	FAC
<i>Muhlenbergia sylvatica</i>	Forest muhly	FACW
<i>Myosotis arvensis</i>	Field forget-me-not	FACU
<i>Myosotis laxa</i>	Bay forget-me-not	OBL
<i>Myosotis scorpioides</i>	True forget-me-not	OBL
<i>Myosotis sylvatica</i>	Woodland forget-me-not	UPL
<i>Myosotis verna</i>	Spring forget-me-not	FACU
<i>Myosoton aquaticum</i>	Giant-chickweed	FAC
<i>Myosurus minimus</i>	Tiny mousetail	FAC
<i>Myrica gale</i>	Sweetgale	OBL
<i>Myriophyllum alterniflorum</i>	Alternate-flower water-milfoil	OBL

Scientific Name	Common Name	Wetland Indicator Status*
<i>Myriophyllum farwellii</i>	Farwell's water-milfoil	OBL
<i>Myriophyllum heterophyllum</i>	Two-leaf water-milfoil	OBL
<i>Myriophyllum humile</i>	Low water-milfoil	OBL
<i>Myriophyllum sibiricum</i>	Siberian water-milfoil	OBL
<i>Myriophyllum spicatum</i>	Eurasian water-milfoil	OBL
<i>Myriophyllum tenellum</i>	Slender water-milfoil	OBL
<i>Myriophyllum verticillatum</i>	Whorled water-milfoil	OBL
<i>Napaea dioica</i>	Glade-mallow	FACW
<i>Nelumbo lutea</i>	American lotus	OBL
<i>Nemopanthus mucronatus</i>	Catberry	OBL
<i>Nymphaea odorata</i>	White water-lily	OBL
<i>Nyssa sylvatica</i>	Blackgum	FAC
<i>Oenothera perennis</i>	Small evening-primrose	FAC
<i>Oenothera pilosella</i>	Meadow evening-primrose	FAC
<i>Oenothera rhombipetala</i>	Four-point evening-primrose	FACU

Scientific Name	Common Name	Wetland Indicator Status*
<i>Onoclea sensibilis</i>	Sensitive fern	FACW
<i>Ophioglossum pusillum</i>	Northern adder's-tongue	FACW
<i>Ornithogalum umbellatum</i>	Common star-of-bethlehem	FACU
<i>Orobanche uniflora</i>	One-flower broom-rape	UPL
<i>Osmorhiza claytonii</i>	Hairy sweet-cicely	FACU
<i>Osmorhiza longistylis</i>	Aniseroot	FACU
<i>Osmunda claytoniana</i>	Interrupted fern	FAC
<i>Ostrya virginiana</i>	Eastern hop-hornbeam	FACU
<i>Oxypolis rigidior</i>	Stiff cowbane	OBL
<i>Panicum capillare</i>	Witchgrass	FAC
<i>Panicum dichotomiflorum</i>	Fall panic grass	FACW
<i>Panicum philadelphicum</i>	Tuckerman panic grass	FAC
<i>Panicum virgatum</i>	Switchgrass	FAC
<i>Parietaria pensylvanica</i>	Pennsylvania pellitory	FACU
<i>Parnassia glauca</i>	Waxy grass-of-parnassus	OBL

Scientific Name	Common Name	Wetland Indicator Status*
<i>Parnassia palustris</i>	Northern grass-of-parnassus	OBL
<i>Parthenocissus quinquefolia</i>	Virginia-creeper	FACU
<i>Pascopyrum smithii</i>	Western-wheat grass	FACU
<i>Paspalum setaceum</i>	Thin paspalum	FACU
<i>Pedicularis canadensis</i>	Early wood lousewort	FACU
<i>Pedicularis lanceolata</i>	Swamp lousewort	FACW
<i>Peltandra virginica</i>	Arrow-arum	OBL
<i>Penstemon digitalis</i>	Foxglove beardtongue	FAC
<i>Penstemon pallidus</i>	Pale beardtongue	UPL
<i>Penthorum sedoides</i>	Ditch-stonecrop	OBL
<i>Phalaris arundinacea</i>	Reed canary grass	FACW
<i>Phalaris canariensis</i>	Common canary grass	FACU
<i>Phegopteris hexagonoptera</i>	Broad beech fern	FACU
<i>Phleum pratense</i>	Timothy	FACU
<i>Phlox divaricata</i>	Wild blue phlox	FACU

Scientific Name	Common Name	Wetland Indicator Status*
<i>Phlox glaberrima</i>	Smooth phlox	FACW
<i>Phlox pilosa</i>	Downy phlox	FACU
<i>Phragmites australis</i>	Common reed	FACW
<i>Phryma leptostachya</i>	American lopseed	FACU
<i>Phylla lanceolata</i>	Lance-leaf fogfruit	OBL
<i>Physocarpus opulifolius</i>	Eastern ninebark	FACW
<i>Physostegia virginiana</i>	Obedient-plant	FACW
<i>Phytolacca americana</i>	Common pokeweed	FACU
<i>Pilea fontana</i>	Lesser clearweed	FACW
<i>Pilea pumila</i>	Canadian clearweed	FACW
<i>Pinus resinosa</i>	Red pine	FACU
<i>Plantago cordata</i>	Heart-leaf plantain	OBL
<i>Plantago major</i>	Common plantain	FACU
<i>Plantago virginica</i>	Pale-seed plantain	FACU
<i>Platanthera clavellata</i>	Green woodland orchid	FACW

Scientific Name	Common Name	Wetland Indicator Status*
<i>Platanthera flava</i>	Pale-green orchid	FACW
<i>Platanthera lacera</i>	Green fringed orchid	FACW
<i>Platanthera leucophaea</i>	Prairie white fringed orchid	FACW
<i>Platanthera obtusata</i>	Blunt-leaf orchid	FACW
<i>Platanthera psycodes</i>	Lesser purple fringed orchid	FACW
<i>Platanus occidentalis</i>	American sycamore	FACW
<i>Poa alsodes</i>	Grove blue grass	FAC
<i>Poa annua</i>	Annual blue grass	FACU
<i>Poa compressa</i>	Canada blue grass	FACU
<i>Poa interior</i>	Inland blue grass	FAC
<i>Poa nemoralis</i>	Woodland bluegrass	FACU
<i>Poa paludigena</i>	Patterson blue grass	OBL
<i>Poa palustris</i>	Fowl blue grass	FACW
<i>Poa pratensis</i>	Kentucky blue grass	FACU
<i>Poa sylvestris</i>	Woodland blue grass	FAC

Scientific Name	Common Name	Wetland Indicator Status*
<i>Poa trivialis</i>	Rough-stalk blue grass	FACW
<i>Podophyllum peltatum</i>	May-apple	FACU
<i>Pogonia ophioglossoides</i>	Rose pogonia	OBL
<i>Polanisia dodecandra</i>	Rough-seed clammyweed	UPL
<i>Polemonium occidentale</i>	Western jacob's-ladder	FACW
<i>Polemonium reptans</i>	Greek-valerian	FAC
<i>Polygala cruciata</i>	Cross-leaf milkwort	FACW
<i>Polygala sanguinea</i>	Purple milkwort	FACU
<i>Polygala senega</i>	Seneca-snakeroot	FACU
<i>Polygala verticillata</i>	Whorled milkwort	UPL
<i>Polygonatum biflorum</i>	Small solomon's-seal	FACU
<i>Polygonum achoreum</i>	Leathery knotweed	FACU
<i>Polygonum aviculare</i>	Prostrate knotweed	FACU
<i>Polygonum erectum</i>	Erect knotweed	FACU
<i>Polygonum ramosissimum</i>	Bushy knotweed	FAC

Scientific Name	Common Name	Wetland Indicator Status*
<i>Polypogon monspeliensis</i>	Annual rabbit's-foot grass	OBL
<i>Polystichum acrostichoides</i>	Christmas fern	FACU
<i>Pontederia cordata</i>	Pickerelweed	OBL
<i>Populus balsamifera</i>	Balsam poplar	FACW
<i>Populus deltoides</i>	Eastern cottonwood	FAC
<i>Populus grandidentata</i>	Big-tooth aspen	FACU
<i>Populus tremuloides</i>	Quaking aspen	FAC*
<i>Portulaca oleracea</i>	Common purslane	FACU
<i>Potamogeton alpinus</i>	Alpine pondweed	OBL
<i>Potamogeton amplifolius</i>	Large-leaf pondweed	OBL
<i>Potamogeton crispus</i>	Curly pondweed	OBL
<i>Potamogeton diversifolius</i>	Waterthread pondweed	OBL
<i>Potamogeton epihydrus</i>	Ribbon-leaf pondweed	OBL
<i>Potamogeton gramineus</i>	Grassy pondweed	OBL
<i>Potamogeton illinoensis</i>	Illinois pondweed	OBL

Scientific Name	Common Name	Wetland Indicator Status*
<i>Potamogeton natans</i>	Floating-leaf pondweed	OBL
<i>Potamogeton nodosus</i>	Long-leaf pondweed	OBL
<i>Potamogeton praelongus</i>	White-stem pondweed	OBL
<i>Potamogeton pusillus</i>	Small pondweed	OBL
<i>Potamogeton richardsonii</i>	Richardson's pondweed	OBL
<i>Potamogeton vaseyi</i>	Vasey's pondweed	OBL
<i>Potamogeton zosteriformis</i>	Flat-stem pondweed	OBL
<i>Potentilla argentea</i>	Silver cinquefoil	FACU
<i>Potentilla norvegica</i>	Norwegian cinquefoil	FAC
<i>Potentilla simplex</i>	Oldfield cinquefoil	FACU
<i>Primula mistassinica</i>	Mistassini primrose	FACW
<i>Proserpinaca palustris</i>	Marsh mermaidweed	OBL
<i>Prunella vulgaris</i>	Heal-all	FAC
<i>Prunus americana</i>	American plum	UPL
<i>Prunus serotina</i>	Black cherry	FACU

Scientific Name	Common Name	Wetland Indicator Status*
<i>Prunus virginiana</i>	Choke cherry	FACU
<i>Ptelea trifoliata</i>	Common hoptree	FACU
<i>Pteridium aquilinum</i>	Bracken fern	FACU
<i>Puccinellia distans</i>	Weeping alkali grass	FACW
<i>Puccinellia nuttalliana</i>	Nuttall's alkali grass	OBL
<i>Pycnanthemum tenuifolium</i>	Slender mountain-mint	FAC
<i>Quercus alba</i>	White oak	FACU
<i>Quercus bicolor</i>	Swamp white oak	FACW
<i>Quercus macrocarpa</i>	Bur oak	FACU
<i>Quercus rubra</i>	Northern red oak	FACU
<i>Ranunculus abortivus</i>	Subalpine buttercup	FAC
<i>Ranunculus acris</i>	Tall buttercup	FAC
<i>Ranunculus fascicularis</i>	Early buttercup	FACU
<i>Ranunculus flabellaris</i>	Yellow water buttercup	OBL
<i>Ranunculus flammula</i>	Creeping spearwort	FACW

Scientific Name	Common Name	Wetland Indicator Status*
<i>Ranunculus gmelinii</i>	Small yellow water buttercup	FACW
<i>Ranunculus hispidus</i>	Bristly buttercup	FAC
<i>Ranunculus longirostris</i>	Long-beak water buttercup	OBL
<i>Ranunculus pennsylvanicus</i>	Pennsylvania buttercup	OBL
<i>Ranunculus recurvatus</i>	Blisterwort	FACW
<i>Ranunculus repens</i>	Creeping buttercup	FAC
<i>Ranunculus sceleratus</i>	Celery-leaf buttercup	OBL
<i>Ranunculus trichophyllus</i>	White water-crowfoot	OBL
<i>Rhexia virginica</i>	Virginia meadow-beauty	OBL
<i>Rhynchospora alba</i>	White beakrush	OBL
<i>Rhynchospora capillacea</i>	Capillary beakrush	OBL
<i>Rhynchospora capitellata</i>	Browinish beakrush	OBL
<i>Rhynchospora fusca</i>	Brown beakrush	OBL
<i>Rhynchospora scirpoides</i>	Long-beak beakrush	OBL
<i>Ribes americanum</i>	Wild black currant	FACW

Scientific Name	Common Name	Wetland Indicator Status*
<i>Ribes aureum</i>	Golden currant	FACU
<i>Ribes glandulosum</i>	Skunk currant	FACW
<i>Ribes hudsonianum</i>	Northern black currant	OBL
<i>Ribes triste</i>	Swamp red currant	OBL
<i>Rorippa palustris</i>	Bog yellowcress	OBL
<i>Rorippa sessiliflora</i>	Stalkless yellowcress	OBL
<i>Rorippa sylvestris</i>	Creeping yellowcress	OBL
<i>Rosa blanda</i>	Smooth rose	FACU
<i>Rosa carolina</i>	Carolina rose	FACU
<i>Rosa micrantha</i>	Small-flower sweetbrier	FACU
<i>Rosa palustris</i>	Swamp rose	OBL
<i>Rosa setigera</i>	Climbing rose	FACU
<i>Rosa woodsii</i>	Woods' rose	FACU
<i>Rubus allegheniensis</i>	Allegheny blackberry	FACU
<i>Rubus baileyanus</i>	Bailey's dewberry	FACU

Scientific Name	Common Name	Wetland Indicator Status*
<i>Rubus flagellaris</i>	Northern dewberry	FACU
<i>Rubus idaeus</i>	Common red raspberry	FAC*
<i>Rubus missouricus</i>	Missouri dewberry	FACU
<i>Rubus multiflorus</i>	Variable blackberry	FAC
<i>Rubus parviflorus</i>	Western thimble-berry	FACU
<i>Rubus setosus</i>	Bristly blackberry	FACW
<i>Rudbeckia hirta</i>	Black-eyed susan	FACU
<i>Rudbeckia laciniata</i>	Cut-leaf coneflower	FACW
<i>Rudbeckia subtomentosa</i>	Sweet coneflower	FACU
<i>Rudbeckia triloba</i>	Brown-eyed-susan	FACU
<i>Rumex acetosa</i>	Garden sorrel	UPL
<i>Rumex acetosella</i>	Sheep sorrel	FACU
<i>Rumex altissimus</i>	Pale dock	FACW
<i>Rumex crispus</i>	Curly dock	FAC
<i>Rumex longifolius</i>	Door-yard dock	FAC

Scientific Name	Common Name	Wetland Indicator Status*
<i>Rumex obtusifolius</i>	Bitter dock	FAC
<i>Rumex venosus</i>	Veiny dock	UPL
<i>Rumex verticillatus</i>	Swamp dock	OBL
<i>Sagittaria brevirostra</i>	Short-beak arrowhead	OBL
<i>Sagittaria calycina</i>	Hooded arrowhead	OBL
<i>Sagittaria graminea</i>	Grass-leaf arrowhead	OBL
<i>Sagittaria latifolia</i>	Duck-potato	OBL
<i>Salix cordata</i>	Heart-leaf willow	FAC
<i>Salix discolor</i>	Pussy willow	FACW
<i>Salix eriocephala</i>	Missouri river willow	FACW
<i>Salix lucida</i>	Shining willow	FACW
<i>Salix myricoides</i>	Bayberry willow	FACW
<i>Salix nigra</i>	Black willow	OBL
<i>Salix petiolaris</i>	Meadow willow	FACW
<i>Salix planifolia</i>	Diamond-leaf willow	OBL

Scientific Name	Common Name	Wetland Indicator Status*
<i>Salix pyrifolia</i>	Balsam willow	FACW
<i>Salix sericea</i>	Silky willow	OBL
<i>Salix serissima</i>	Autumn willow	OBL
<i>Sambucus racemosa</i>	European red elder	FACU
<i>Sanicula canadensis</i>	Canadian black-snakeroot	FACU
<i>Sarracenia purpurea</i>	Purple pitcherplant	OBL
<i>Schizachyrium scoparium</i>	Little false bluestem	FACU
<i>Scirpus atrovirens</i>	Green bulrush	OBL
<i>Scirpus cyperinus</i>	Wool-grass	OBL
<i>Scirpus georgianus</i>	Dark-green bulrush	OBL
<i>Scirpus hattorianus</i>	Mosquito bulrush	OBL
<i>Scirpus microcarpus</i>	Small-fruit bulrush	OBL
<i>Scirpus pallidus</i>	Pale bulrush	OBL
<i>Scirpus pedicellatus</i>	Stalked bulrush	OBL
<i>Scirpus pendulus</i>	Rufous bulrush	OBL

Scientific Name	Common Name	Wetland Indicator Status*
<i>Scleranthus annuus</i>	Annual knawel	FACU
<i>Scleria reticularis</i>	Netted nut-rush	OBL
<i>Scleria verticillata</i>	Low nut-rush	OBL
<i>Scrophularia lanceolata</i>	Lance-leaf figwort	FACU
<i>Scutellaria galericulata</i>	Hooded skullcap	OBL
<i>Scutellaria lateriflora</i>	Mad dog skullcap	OBL
<i>Scutellaria ovata</i>	Heart-leaf skullcap	FACU
<i>Selaginella selaginoides</i>	Club spike-moss	FACW
<i>Senecio vulgaris</i>	Common groundsel	FACU
<i>Senna hebecarpa</i>	Wild senna	FACW
<i>Setaria italica</i>	Fox-tail bristle grass	FACU
<i>Setaria pumila</i>	Yellow bristle grass	FAC
<i>Setaria verticillata</i>	Bur bristle grass	FACU
<i>Sicyos angulatus</i>	One-seed burr-cucumber	FACW
<i>Silene nivea</i>	Snowy campion	FACW

Scientific Name	Common Name	Wetland Indicator Status*
<i>Silphium perfoliatum</i>	Cup-plant	FACW
<i>Silphium terebinthinaceum</i>	Prairie rosinweed	FAC
<i>Sisymbrium altissimum</i>	Tall tumble-mustard	FACU
<i>Sisyrinchium albidum</i>	White blue-eyed-grass	FACU
<i>Sisyrinchium angustifolium</i>	Pointed blue-eyed-grass	FAC
<i>Sisyrinchium mucronatum</i>	Michaux's blue-eyed-grass	FAC
<i>Sium suave</i>	Hemlock water-parsnip	OBL
<i>Solanum carolinense</i>	Carolina horse-nettle	FACU
<i>Solidago caesia</i>	Wreath goldenrod	FACU
<i>Solidago canadensis</i>	Canadian goldenrod	FACU
<i>Solidago gigantea</i>	Late goldenrod	FACW
<i>Solidago ohioensis</i>	Ohio goldenrod	OBL
<i>Solidago patula</i>	Round-leaf goldenrod	OBL
<i>Solidago riddellii</i>	Riddell's goldenrod	OBL
<i>Solidago rigida</i>	Stiff goldenrod	FACU

Scientific Name	Common Name	Wetland Indicator Status*
<i>Solidago rugosa</i>	Wrinkle-leaf goldenrod	FAC
<i>Solidago uliginosa</i>	Bog goldenrod	OBL
<i>Sonchus arvensis</i>	Field sow-thistle	FACU
<i>Sonchus asper</i>	Spiny-leaf sow-thistle	FACU
<i>Sorghastrum nutans</i>	Indian grass	FACU
<i>Sparganium americanum</i>	American burr-reed	OBL
<i>Sparganium androcladum</i>	Branching burr-reed	OBL
<i>Sparganium angustifolium</i>	Narrow-leaf burr-reed	OBL
<i>Sparganium eurycarpum</i>	Broad-fruit burr-reed	OBL
<i>Sparganium fluctuans</i>	Floating burr-reed	OBL
<i>Sparganium glomeratum</i>	Clustered burr-reed	OBL
<i>Spartina pectinata</i>	Prairie cord grass	FACW
<i>Sphenopholis obtusata</i>	Prairie wedgegrass	FAC
<i>Spiraea alba</i>	Narrow-leaf meadowsweet	FACW
<i>Spiraea tomentosa</i>	Steeplebush	FACW

Scientific Name	Common Name	Wetland Indicator Status*
<i>Spiranthes cernua</i>	Nodding ladies'-tresses	FACW
<i>Spiranthes lacera</i>	Northern slender ladies'-tresses	FAC
<i>Spiranthes lucida</i>	Shining ladies'-tresses	FACW
<i>Spiranthes magnicamporum</i>	Great plains ladies'-tresses	FACU
<i>Spiranthes romanzoffiana</i>	Hooded ladies'-tresses	OBL
<i>Sporobolus heterolepis</i>	Prairie dropseed	FACU
<i>Stachys palustris</i>	Marsh hedge-nettle	OBL
<i>Stachys tenuifolia</i>	Smooth hedge-nettle	FACW
<i>Staphylea trifolia</i>	American bladdernut	FAC
<i>Stellaria borealis</i>	Northern starwort	FACW
<i>Stellaria graminea</i>	Lesser starwort	UPL
<i>Stellaria longifolia</i>	Long-leaf starwort	FACW
<i>Stellaria longipes</i>	Long-stalk starwort	FACU
<i>Stellaria media</i>	Common chickweed	FACU
<i>Stellaria palustris</i>	Marsh starwort	FAC

Scientific Name	Common Name	Wetland Indicator Status*
<i>Suaeda calceoliformis</i>	Pursh seepweed	FACW
<i>Symphoricarpos orbiculatus</i>	Coral-berry	FACU
<i>Symplocarpus foetidus</i>	Skunk-cabbage	OBL
<i>Taxus canadensis</i>	American yew	FACU
<i>Teucrium canadense</i>	American germander	FACW
<i>Thalictrum dasycarpum</i>	Purple meadow-rue	FACW
<i>Thalictrum dioicum</i>	Early meadow-rue	FACU
<i>Thalictrum revolutum</i>	Waxy-leaf meadow-rue	FAC
<i>Thaspium barbinode</i>	Hairy joint meadow-parsnip	UPL
<i>Thuja occidentalis</i>	Northern white-cedar	FACW
<i>Tilia americana</i>	American basswood	FACU
<i>Toxicodendron radicans</i>	Poison-ivy	FAC
<i>Toxicodendron rydbergii</i>	Rydberg poison-ivy	FAC
<i>Toxicodendron vernix</i>	Poison-sumac	OBL
<i>Tradescantia bracteata</i>	Long-bract spiderwort	FACU

Scientific Name	Common Name	Wetland Indicator Status*
<i>Tradescantia occidentalis</i>	Prairie spiderwort	UPL
<i>Tradescantia ohiensis</i>	Ohio spiderwort	FACU
<i>Tridens flavus</i>	Purple-top tridens	UPL
<i>Trifolium hybridum</i>	Alsike clover	FACU
<i>Trifolium pratense</i>	Red clover	FACU
<i>Trifolium repens</i>	White clover	FACU
<i>Trillium cernuum</i>	Nodding trillium	FAC
<i>Trillium flexipes</i>	White trillium	FAC
<i>Trisetum spicatum</i>	Spike trisetum	FAC
<i>Typha angustifolia</i>	Narrow-leaf cat-tail	OBL
<i>Typha latifolia</i>	Broad-leaf cat-tail	OBL
<i>Typha X glauca</i>	Blue cattail	OBL
<i>Ulmus americana</i>	American elm	FACW
<i>Ulmus rubra</i>	Slippery elm	FAC
<i>Ulmus thomasii</i>	Rock elm	FAC

Scientific Name	Common Name	Wetland Indicator Status*
<i>Urtica dioica</i>	Stinging nettle	FAC
<i>Utricularia geminiscapa</i>	Hidden-fruit bladderwort	OBL
<i>Utricularia intermedia</i>	Flat-leaf bladderwort	OBL
<i>Uvularia sessilifolia</i>	Sessile-leaf bellwort	FACU
<i>Vaccinium corymbosum</i>	Highbush blueberry	FACW
<i>Vaccinium macrocarpon</i>	Large cranberry	OBL
<i>Valeriana edulis</i>	Edible valerian	FACW
<i>Vallisneria americana</i>	Wild-celery	OBL
<i>Verbena bracteata</i>	Prostrate vervain	FACU
<i>Verbena hastata</i>	Blue vervain	FACW
<i>Verbena urticifolia</i>	White vervain	FAC
<i>Vernonia fasciculata</i>	Prairie ironweed	FACW
<i>Veronica americana</i>	American speedwell	OBL
<i>Veronica anagallis-aquatica</i>	Water speedwell	OBL
<i>Veronica officinalis</i>	Common speedwell	FACU

Scientific Name	Common Name	Wetland Indicator Status*
<i>Veronica peregrina</i>	Purslane speedwell	FAC
<i>Veronica scutellata</i>	Marsh speedwell	OBL
<i>Veronica serpyllifolia</i>	Thyme-leaf speedwell	FAC
<i>Veronicastrum virginicum</i>	Culver's-root	FAC
<i>Viburnum acerifolium</i>	Maple-leaf viburnum	UPL
<i>Viburnum edule</i>	Squashberry	FACW
<i>Viburnum lentago</i>	Nanny-berry	FAC
<i>Viburnum nudum</i>	Possumhaw viburnum	FACW
<i>Viburnum prunifolium</i>	Blackhaw	FACU
<i>Vicia sativa</i>	Common vetch	FACU
<i>Viola adunca</i>	Hook-spur violet	FACU
<i>Viola affinis</i>	Leconte's violet	FACW
<i>Viola cucullata</i>	Marsh blue violet	OBL
<i>Viola lanceolata</i>	Lance-leaf violet	OBL
<i>Viola missouriensis</i>	Missouri violet	FAC

Scientific Name	Common Name	Wetland Indicator Status*
<i>Viola nephrophylla</i>	Northern bog violet	FACW
<i>Viola palmata</i>	Early blue violet	FACU
<i>Viola primulifolia</i>	Primrose-leaf violet	FACW
<i>Viola pubescens</i>	Downy yellow violet	FACU
<i>Viola sagittata</i>	Arrow-leaf violet	FAC
<i>Viola septentrionalis</i>	Northern blue violet	FACU
<i>Viola sororia</i>	Woolly blue violet	FAC
<i>Viola striata</i>	Striped cream violet	FACW
<i>Viola X bernardii</i>	Bernard's violet	FACU
<i>Vitis aestivalis</i>	Summer grape	FACU
<i>Vitis riparia</i>	River-bank grape	FAC
<i>Wolffia borealis</i>	Northern watermeal	OBL
<i>Wolffia brasiliensis</i>	Dotted watermeal	OBL
<i>Wolffia columbiana</i>	Columbian watermeal	OBL
<i>Xanthium strumarium</i>	Rough cocklebur	FAC

Scientific Name	Common Name	Wetland Indicator Status*
<i>Xyris torta</i>	Twisted yellow-eyed-grass	OBL
<i>Zizania aquatica</i>	Annual wildrice	OBL
<i>Zizia aptera</i>	Heart-leaf alexanders	FACU
<i>Zizia aurea</i>	Golden alexanders	FAC

*Indicator Status:

OBL = Obligate – Occurs almost always under natural conditions in wetlands (99% wetland occurrence)

FACW = Facultative Wetland – Usually occurs in wetlands but occasionally found in non-wetlands (67-99% wetland occurrence)

FAC = Facultative – Equally likely to occur in wetlands and non-wetlands (34-66% wetland occurrence)

FACU = Facultative Upland – Usually occurs in non-wetlands but occasionally found in wetlands. (1-33% wetland occurrence)

UPL = Upland – Occurs in wetlands in another region, but occur almost always under natural conditions in non-wetlands in the region specified. (1% wetland occurrence)