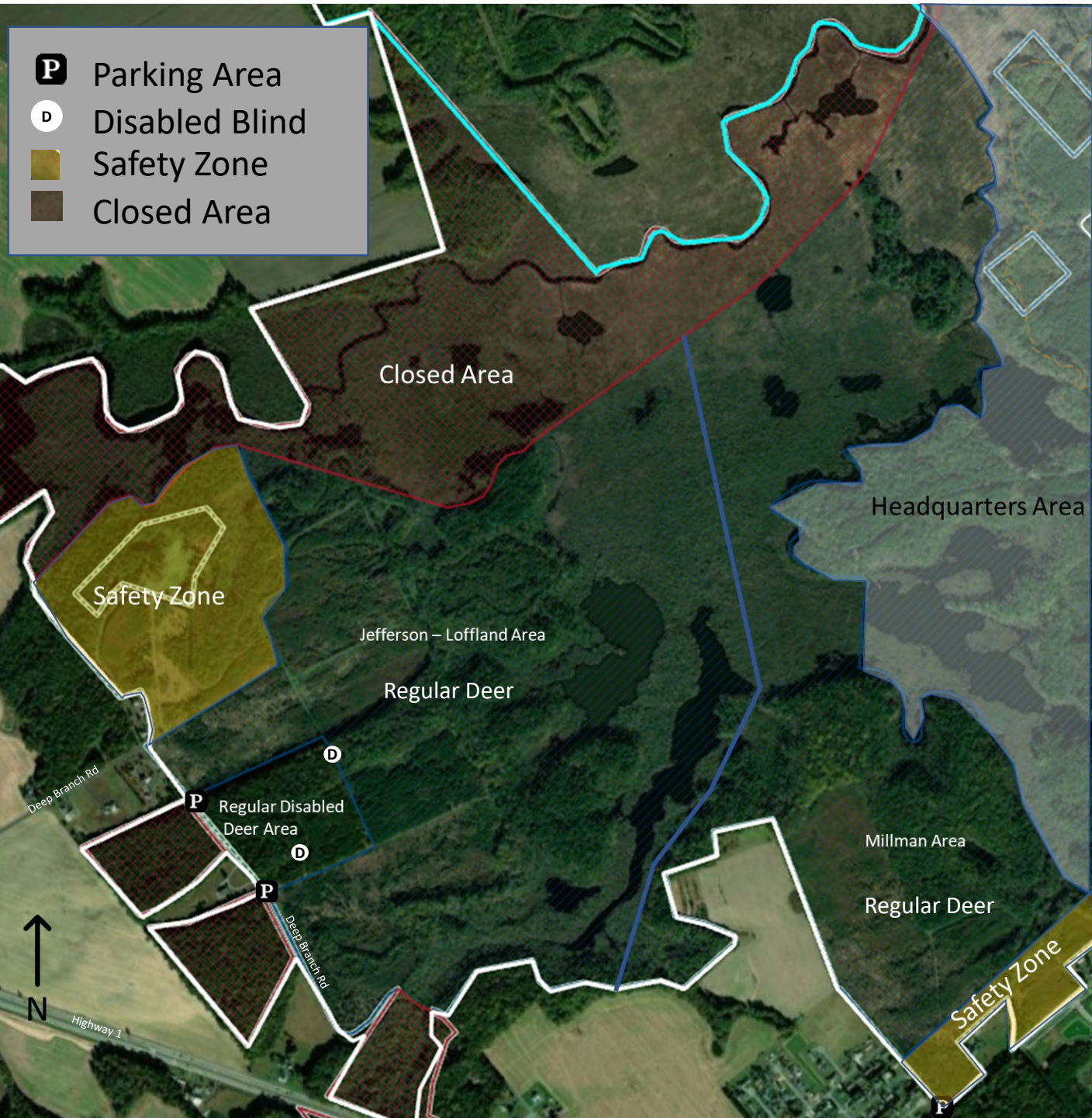


# Prime Hook National Wildlife Refuge

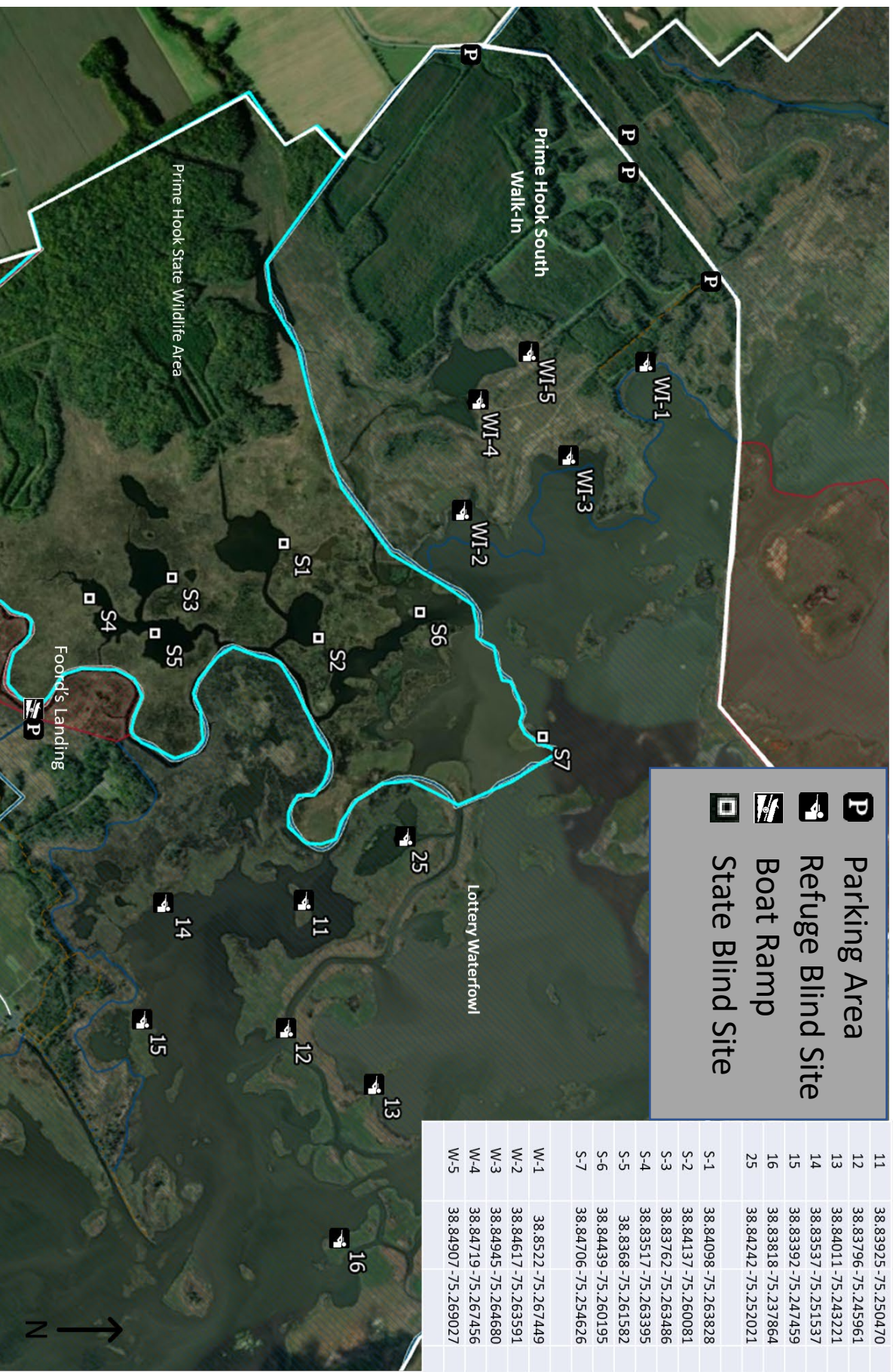
Jefferson – Loffland, Millman Area, and Regular Disabled Deer Area



THIS MAP IS FOR REFERENCE PURPOSES ONLY. THE BOUNDARY LINES SHOWN ARE APPROXIMATE. FOR BOUNDARY LINE INFORMATION, PLEASE CONTACT THE REFUGE OFFICE. PLEASE OBSERVE AND ADHERE TO ALL POSTED AREAS REFER TO REFUGE HUNTING REGULATIONS FOR AVAILABLE HUNTING OPPORTUNITIES INCLUDING HUNT DATES AND HUNT AREAS

# Prime Hook National Wildlife Refuge

## Waterfowl Hunting Map



- P** Parking Area
- Refuge Blind Site
- Boat Ramp
- State Blind Site

11	38.83925 -75.250470
12	38.83796 -75.245961
13	38.84011 -75.243221
14	38.83537 -75.251537
15	38.83392 -75.247459
16	38.831818 -75.237864
25	38.84242 -75.252021
S-1	38.84098 -75.263828
S-2	38.84137 -75.260081
S-3	38.83762 -75.263486
S-4	38.83517 -75.263395
S-5	38.8368 -75.261582
S-6	38.84439 -75.260195
S-7	38.84706 -75.254626
W-1	38.8522 -75.267449
W-2	38.84617 -75.263591
W-3	38.84945 -75.264680
W-4	38.84719 -75.267456
W-5	38.84907 -75.269027

THIS MAP IS FOR REFERENCE PURPOSES ONLY. THE BOUNDARY LINES SHOWN ARE APPROXIMATE. FOR BOUNDARY LINE INFORMATION, PLEASE CONTACT THE REFUGE OFFICE. PLEASE OBSERVE AND ADHERE TO ALL POSTED AREAS/REFER TO REFUGE HUNTING REGULATIONS FOR AVAILABLE HUNTING OPPORTUNITIES INCLUDING HUNT DATES AND HUNT AREAS

# Prime Hook National Wildlife Refuge

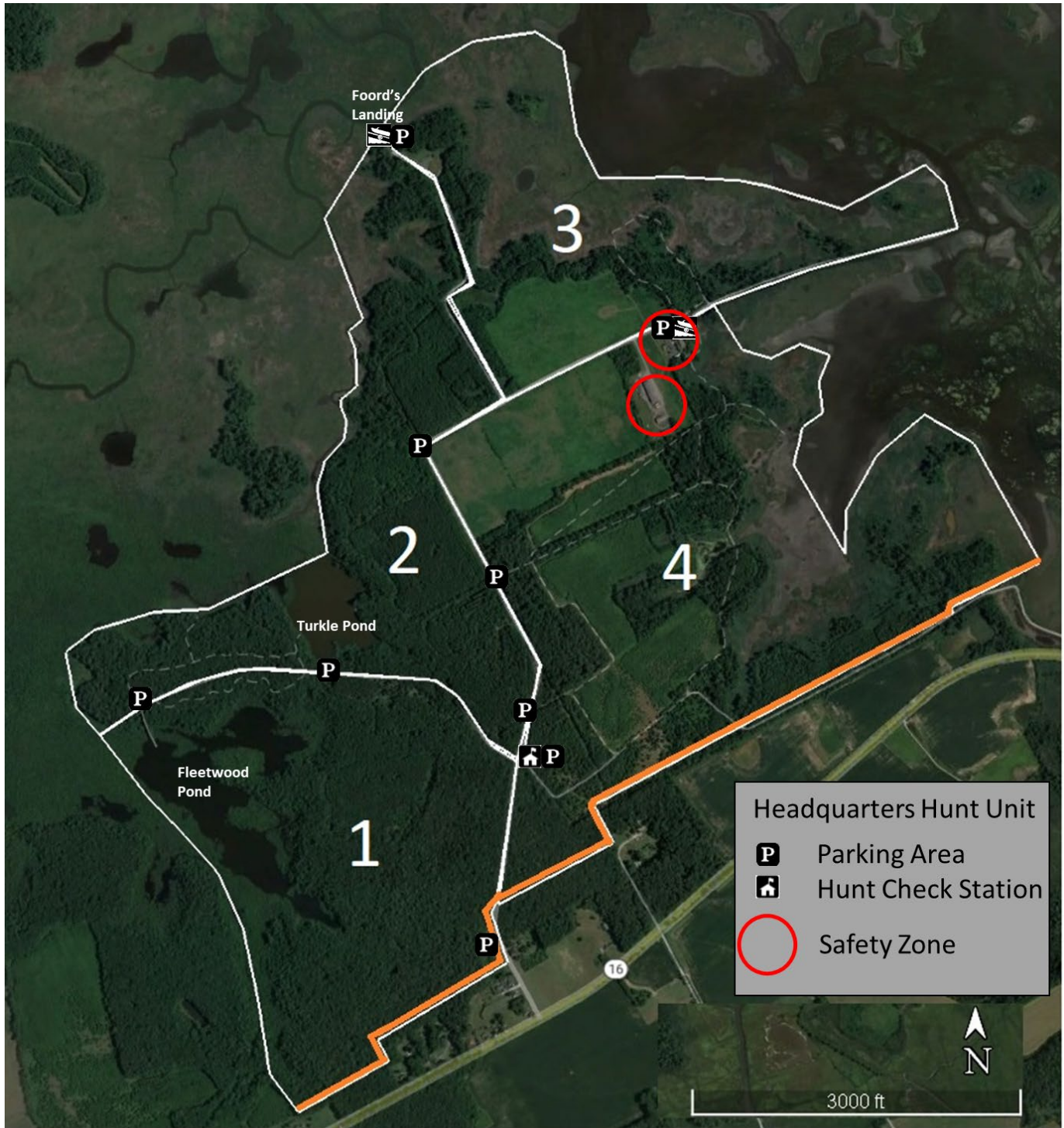
## Island Farms Disabled Hunt Area



THIS MAP IS FOR REFERENCE PURPOSES ONLY. THE BOUNDARY LINES SHOWN ARE APPROXIMATE. FOR BOUNDARY LINE INFORMATION, PLEASE CONTACT THE REFUGE OFFICE. PLEASE OBSERVE AND ADHERE TO ALL POSTED AREAS REFER TO REFUGE HUNTING REGULATIONS FOR AVAILABLE HUNTING OPPORTUNITIES INCLUDING HUNT DATES AND HUNT AREAS

# Prime Hook National Wildlife Refuge

## Headquarters Deer Hunt Area



THIS MAP IS FOR REFERENCE PURPOSES ONLY. THE BOUNDARY LINES SHOWN ARE APPROXIMATE. FOR BOUNDARY LINE INFORMATION, PLEASE CONTACT THE REFUGE OFFICE. PLEASE OBSERVE AND ADHERE TO ALL POSTED AREAS REFER TO REFUGE HUNTING REGULATIONS FOR AVAILABLE HUNTING OPPORTUNITIES INCLUDING HUNT DATES AND HUNT AREAS

# Prime Hook National Wildlife Refuge

Prime Hook South, Prime Hook North, Oak Island, Cods Road Area



THIS MAP IS FOR REFERENCE PURPOSES ONLY. THE BOUNDARY LINES SHOWN ARE APPROXIMATE. FOR BOUNDARY LINE INFORMATION, PLEASE CONTACT THE REFUGE OFFICE. PLEASE OBSERVE AND ADHERE TO ALL POSTED AREAS REFER TO REFUGE HUNTING REGULATIONS FOR AVAILABLE HUNTING OPPORTUNITIES INCLUDING HUNT DATES AND HUNT AREAS

# Prime Hook National Wildlife Refuge

Fowler South, Fowler North, and Slaughter Canal Hunt areas



THIS MAP IS FOR REFERENCE PURPOSES ONLY. THE BOUNDARY LINES SHOWN ARE APPROXIMATE. FOR BOUNDARY LINE INFORMATION, PLEASE CONTACT THE REFUGE OFFICE. PLEASE OBSERVE AND ADHERE TO ALL POSTED AREAS REFER TO REFUGE HUNTING REGULATIONS FOR AVAILABLE HUNTING OPPORTUNITIES INCLUDING HUNT DATES AND HUNT AREAS