



**Lincoln Park Zoo's
Urban Wildlife
Information Network**

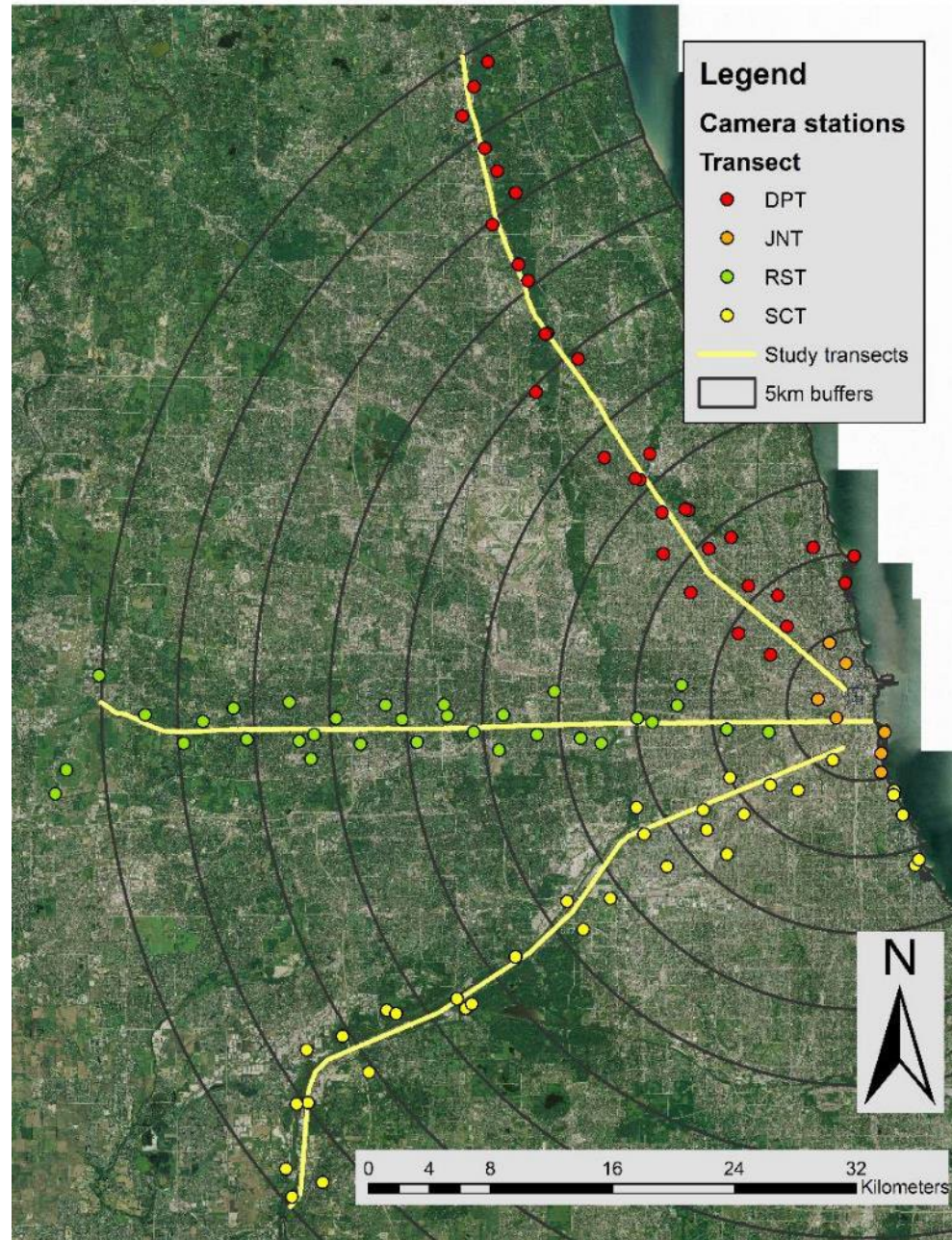
Why study urban wildlife?











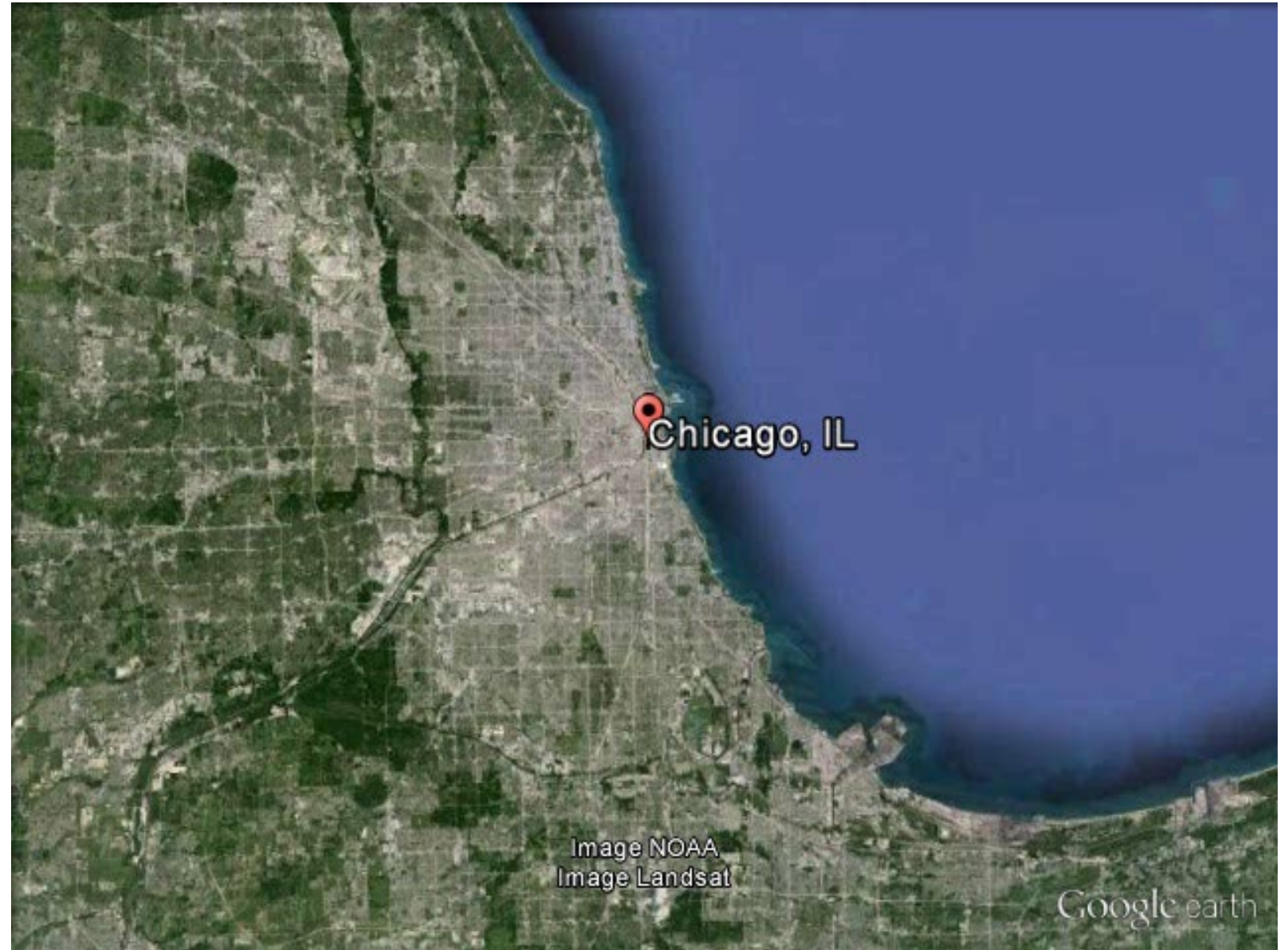


Bushnell CAM17 61F 16C 05-11-2020 03:27:27





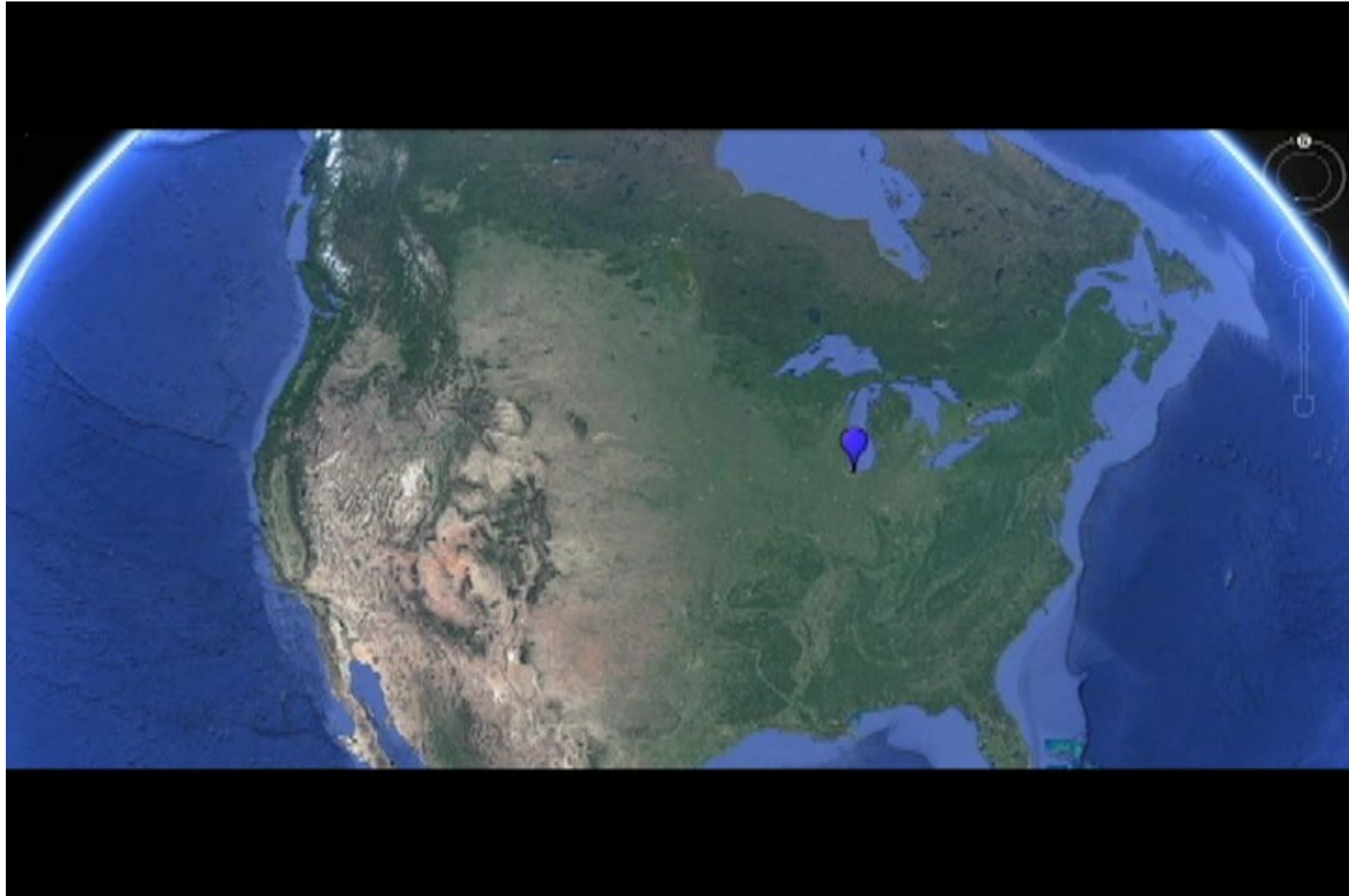
Expanding the Scope





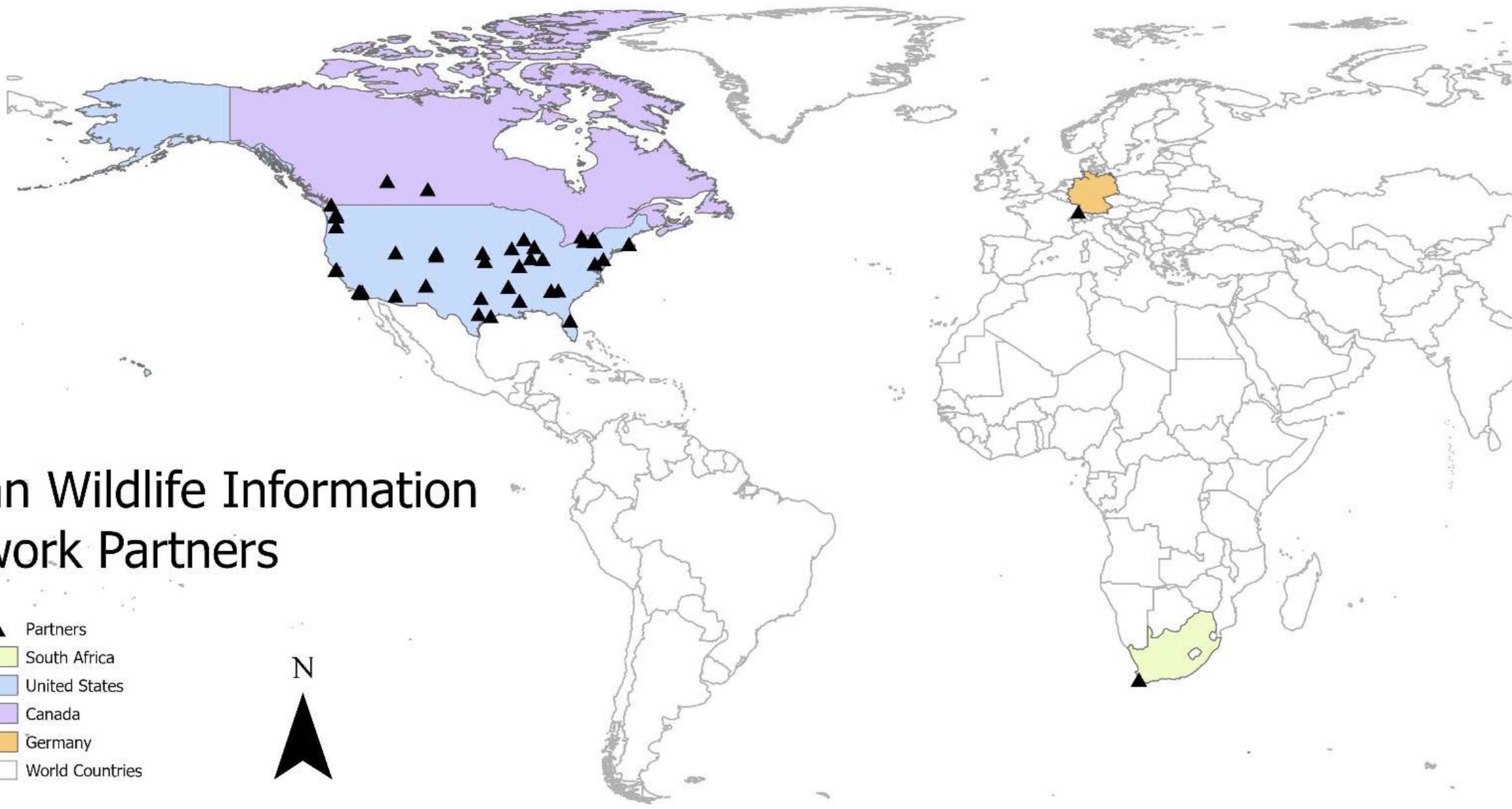
UWIN
urban wildlife information network
LINCOLN PARK ZOO.

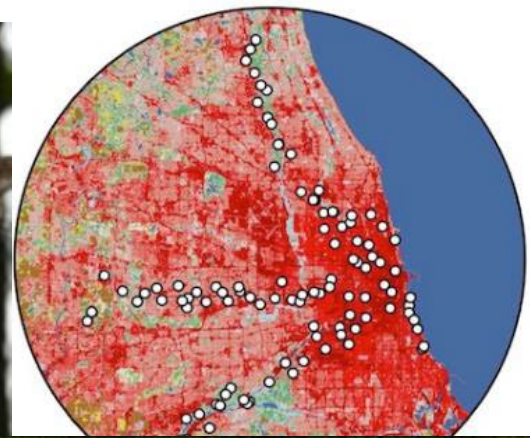
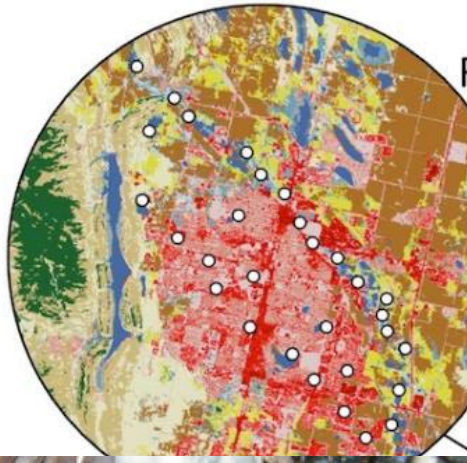




Urban Wildlife Information Network Partners

- ▲ Partners
- South Africa
- United States
- Canada
- Germany
- World Countries





Austin, TX

1:110,000



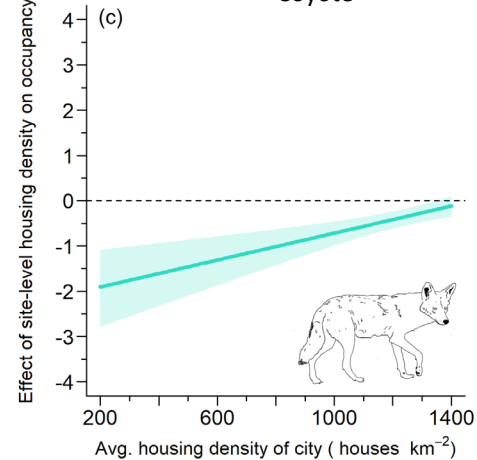
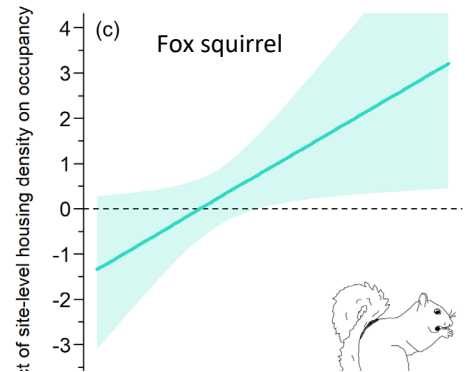
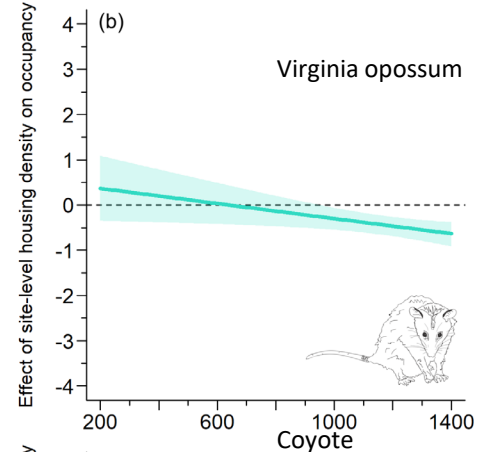
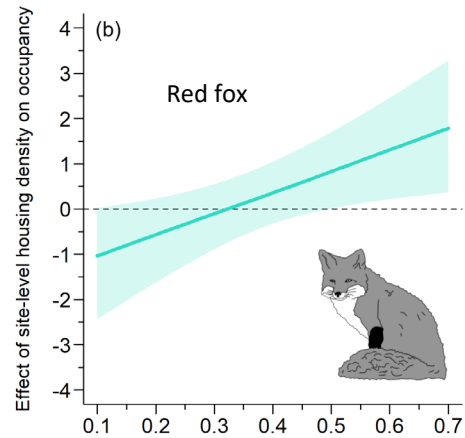
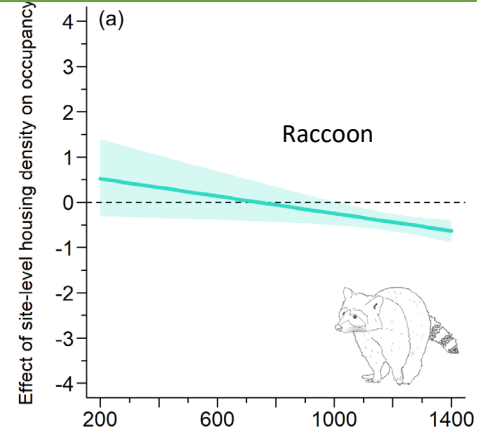
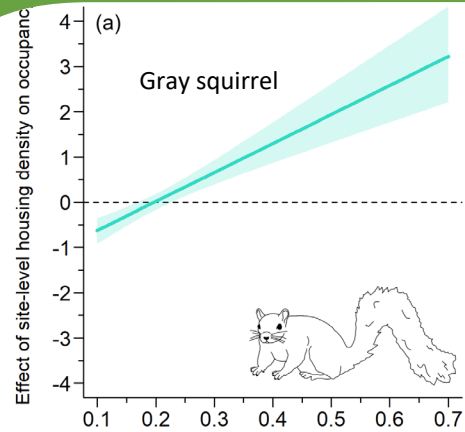
- **10** papers associated with data collected as part of UWIN
- **9** multi-city analyses papers approved by our research committee

Our most recent multi-city analysis included

- **887** camera site
- **20** UWIN cities using share method
- **105** seasons of data
- **100,000+** species detection
- **2,000,000+** images



City-specific responses to urbanization



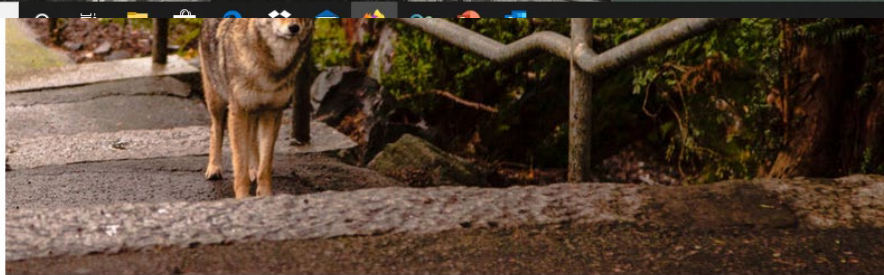
Finally, we can truly understand urban wildlife patterns across the nation—all species!



SCREENLAND

Wildlife During COVID

Animals Are Rewilding Our Cities. On YouTube, at Least.



Coyotes often live in or near urban areas. Usually, they avoid people by going out at night. But because COVID-19 is keeping people indoors, coyotes are more often roaming by day.

NORTHOHANA/ISTOCK/GETTY IMAGES PLUS

Coronavirus: Wild animals enjoy freedom of a quieter world

© 29 April 2020

f b t e Share

Coronavirus pandemic



"NATURE IS HEALING"

Fake news about wild animals reclaiming urban spaces may seem cute, but it's dangerous

May 1, 2020

By Aditi Tandon



Urban Planning



 **LINCOLN PARK ZOO.**
FOR W LDL FE FOR ALL





© janetkessler/coyotejipps.com



City of Chicago | Mayor Lori E. Lightfoot



Chicago Wildlife Management Coexistence Plan

Prepared by Chicago Animal Care and Control & the Lincoln Park
Wildlife Institute



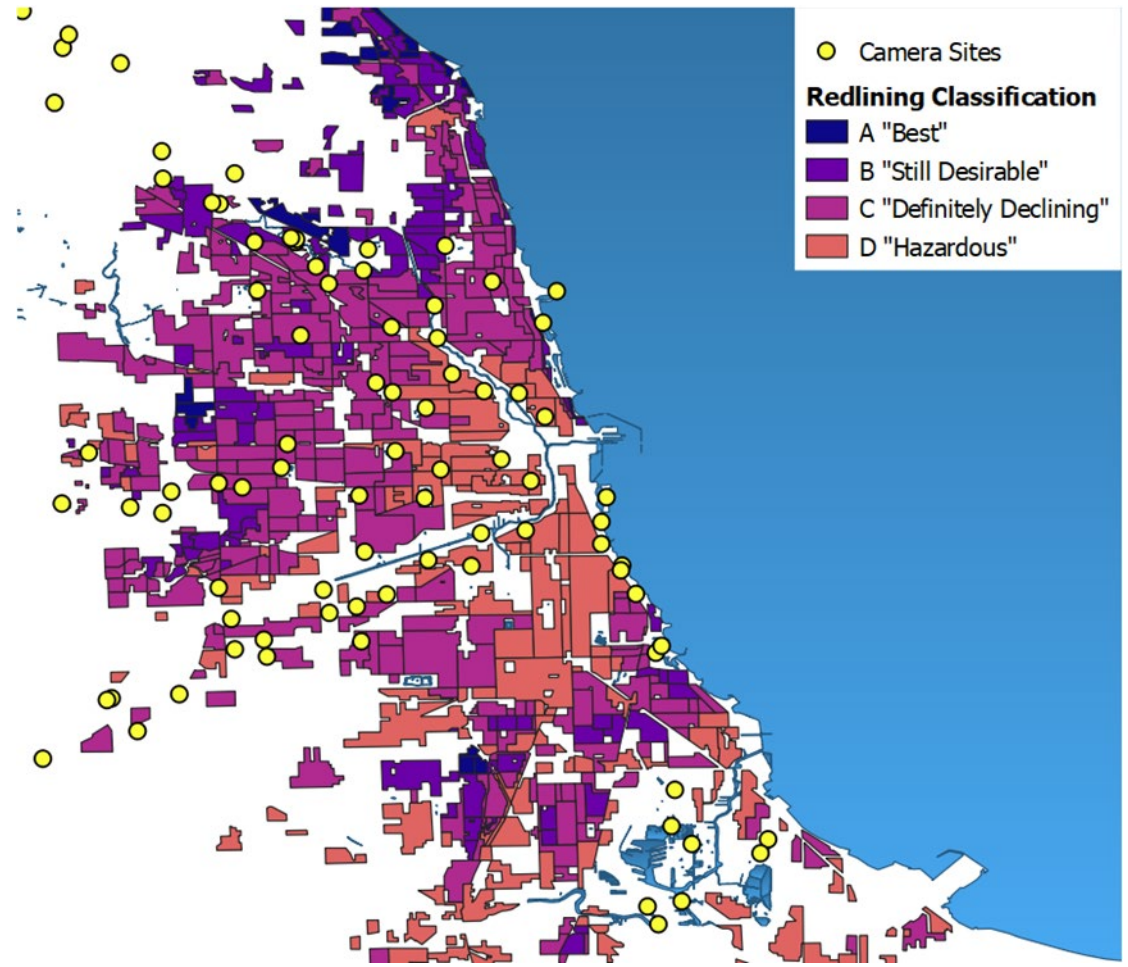
How Chicago Is Helping Residents Coexist With Urban Wildlife

By pairing animal profiles with education and information, the city's Wildlife Management and Coexistence Plan is designed to help residents and urban wildlife peacefully live next to each other.



CINNAMON JANZER APRIL 27, 2022





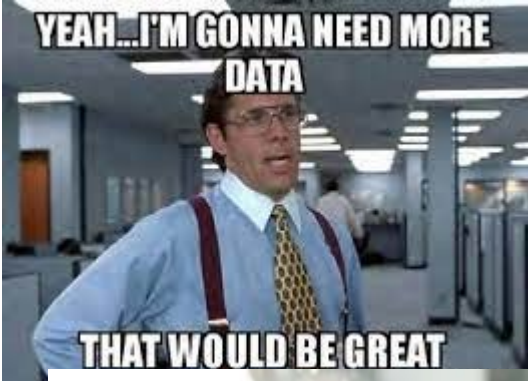
Where do we
go from
here?



A Global Network



But We Need Even More Data!



About Wild Me



A nonprofit organization of software professionals (7) and ML engineers (2) for wildlife conservation (Oregon, USA).

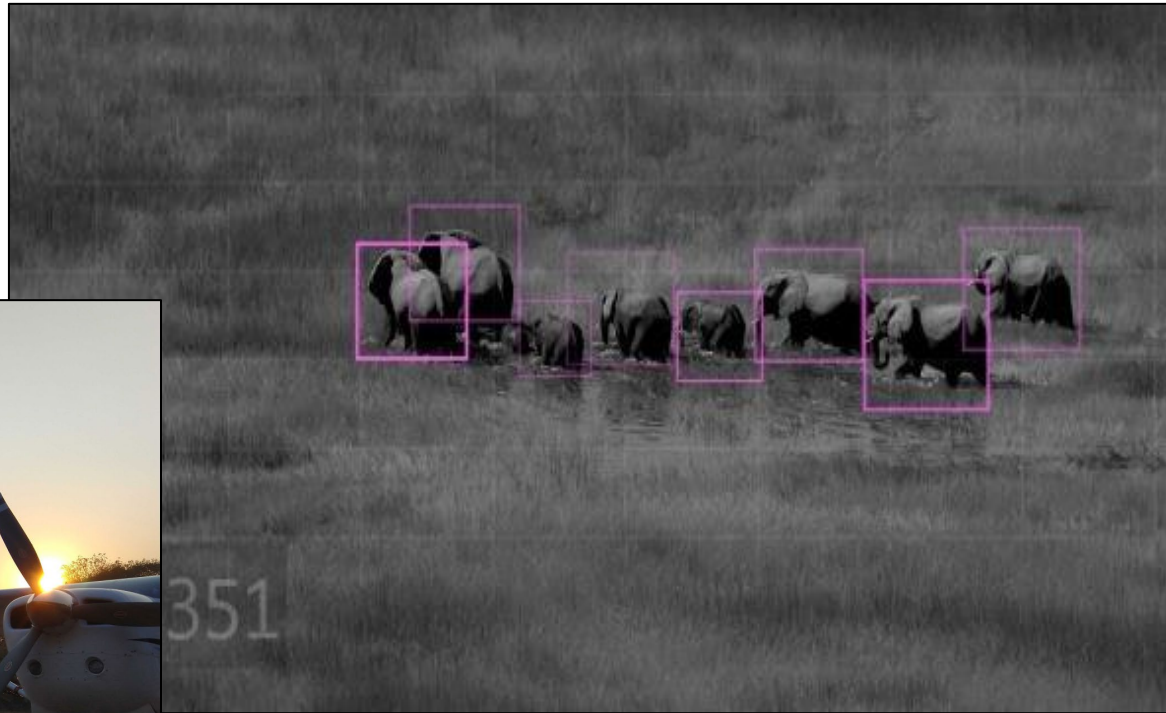


An open-source platform for modernizing mark-recapture and animal population studies.

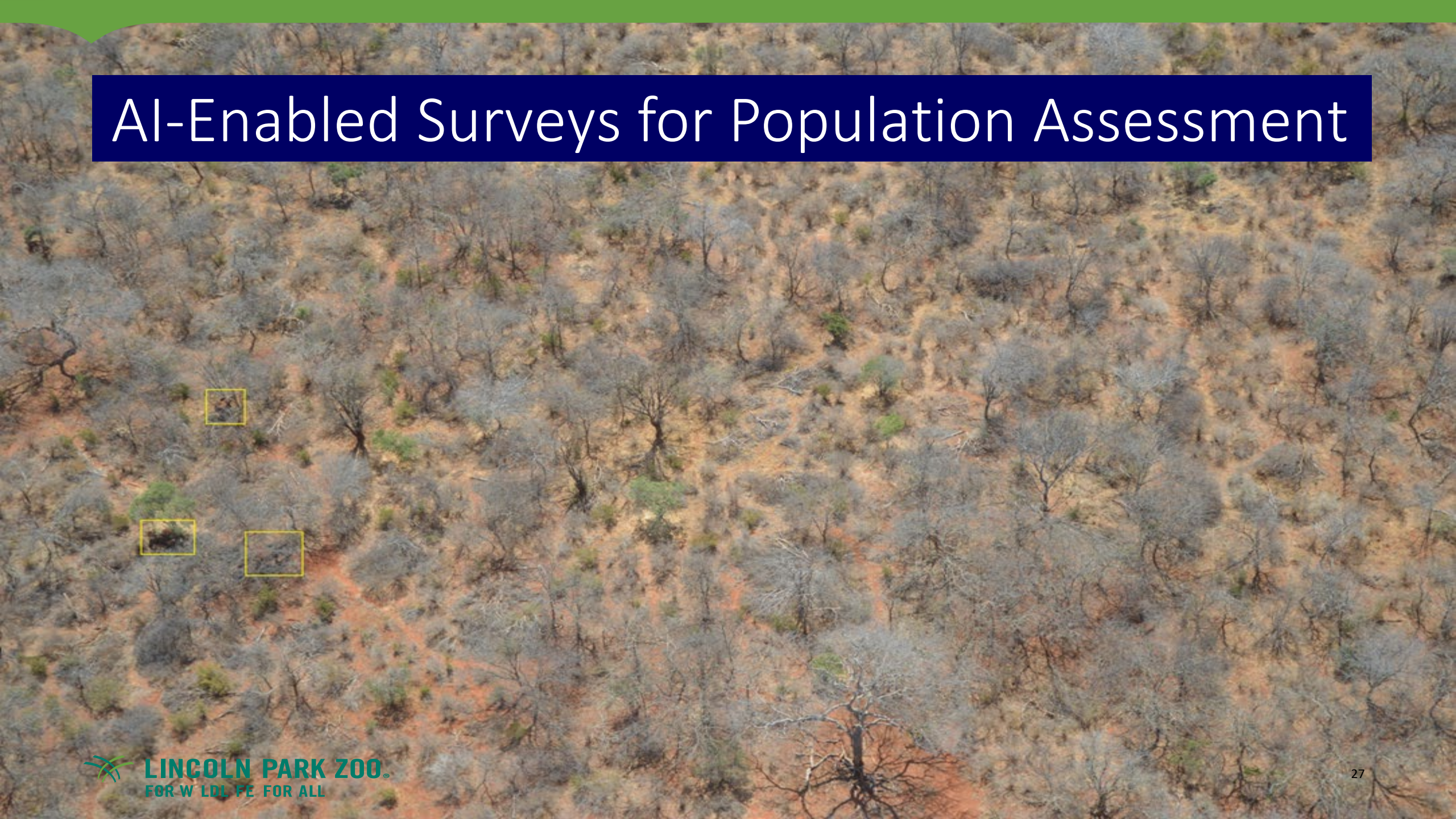
Conservationists and researchers do the work.

Wild Me does the engineering.

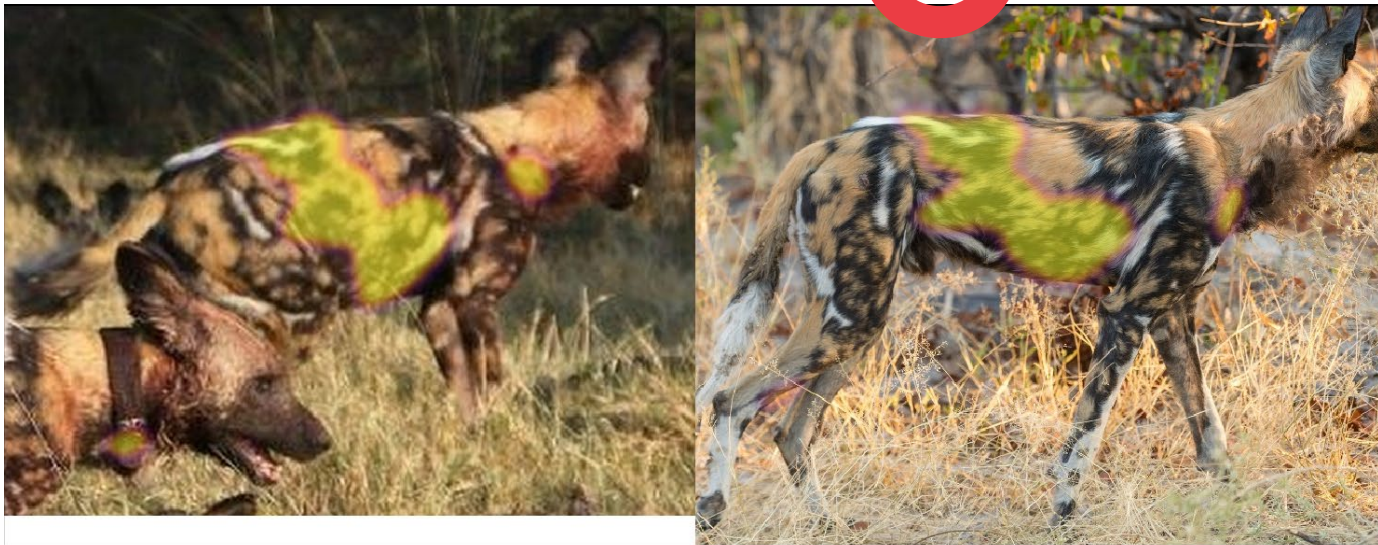
AI-Enabled Surveys for Population Assessment



AI-Enabled Surveys for Population Assessment



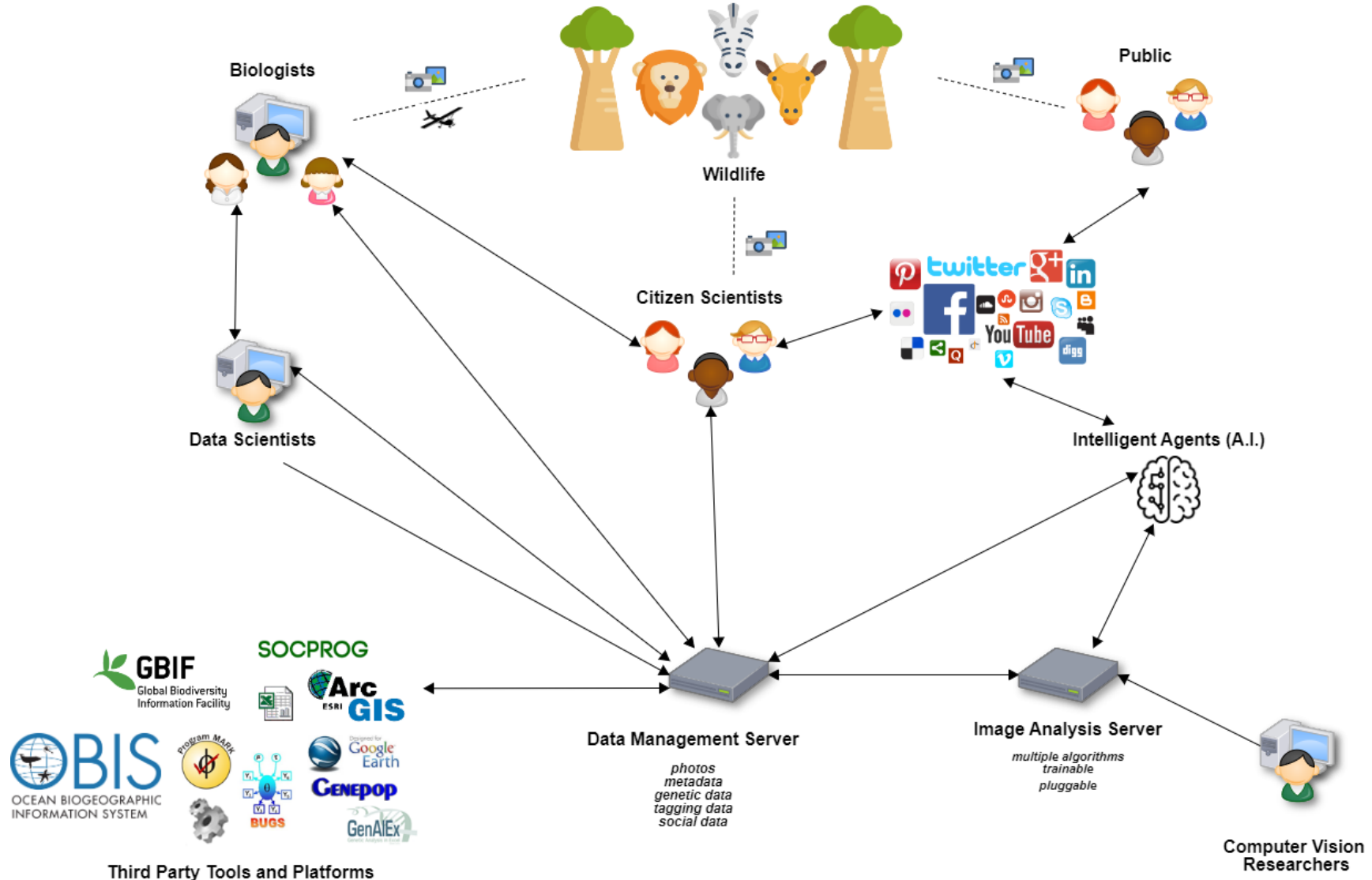
AI: Individual ID for Population Assessment

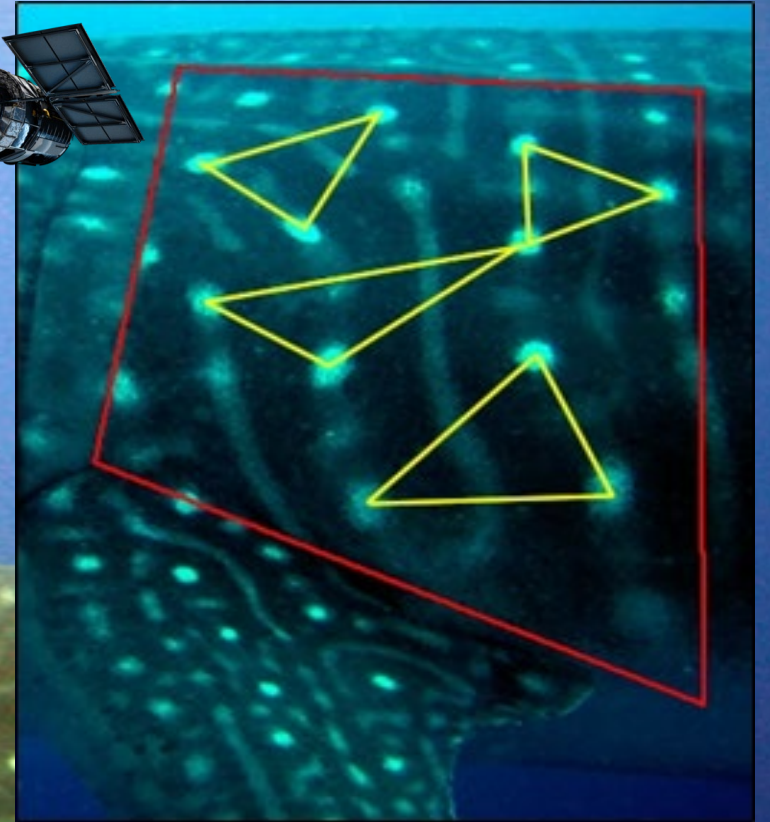
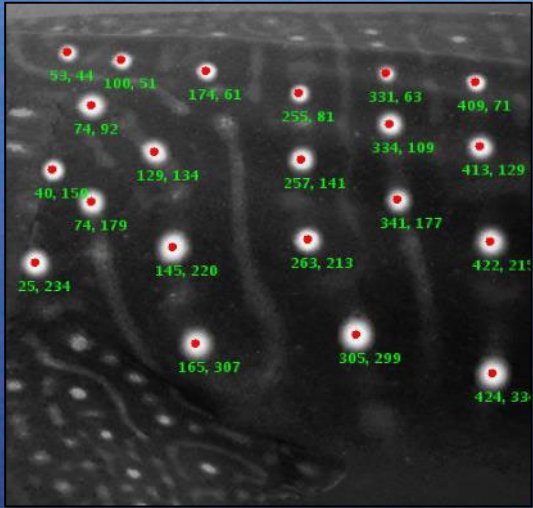
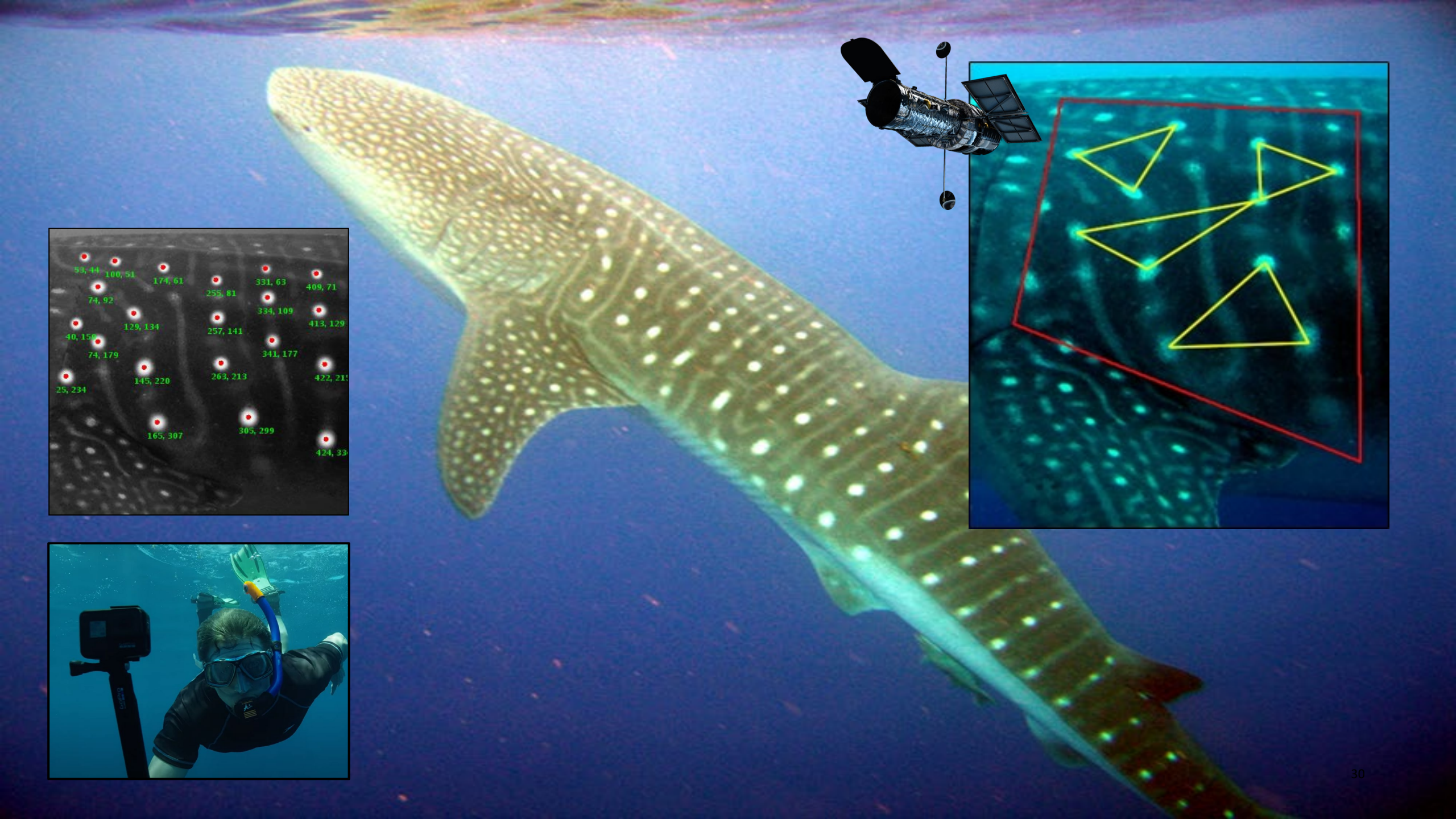




Wild Me Ecosystem

Wild Me helps researchers 1) get more data through public engagement, aerial surveys, and collaboration, 2) apply machine learning for new insights, and 3) develop data-driven conservation strategies to rapidly combat extinction.





```
r < newspotsTemp.length; nsIter++) {
otsTemp[nsIter];
```

```
1 < newspots.length; iterN1++) {
TheSpot().getCentroidX() > xMaxNew) {
rN1].getTheSpot().getCentroidX();
```

```
2 < newspots.length; iterN2++) {
TheSpot().getCentroidX() > xMaxNew) {
rN2].getTheSpot().getCentroidY();
```

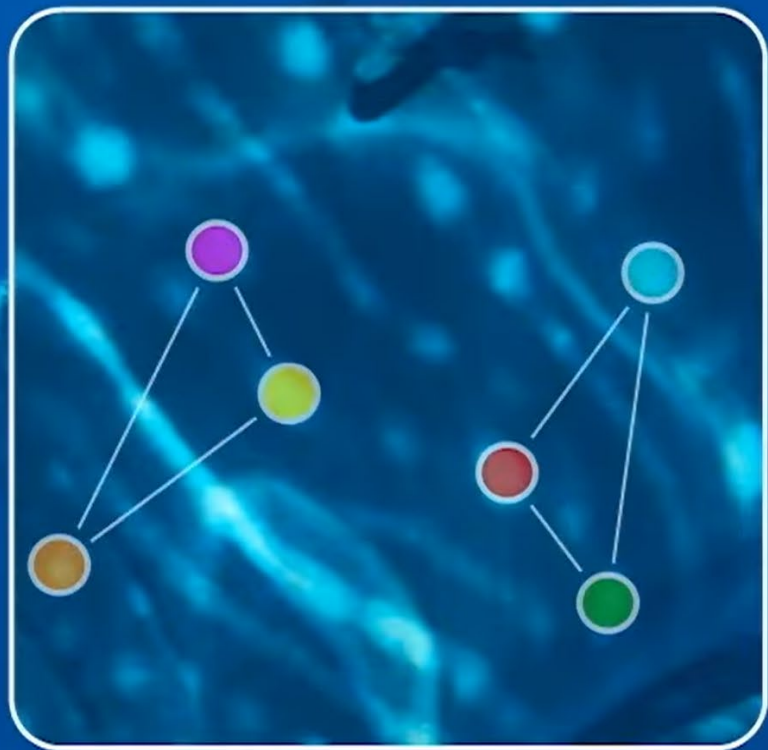
```
3 < spots.length; iterN3++) {
Spot().getCentroidX() > xMaxCatalog) {
erN3].getTheSpot().getCentroidY();
```

```
4 < spots.length; iterN4++) {
Spot().getCentroidY() > yMaxCatalog) {
erN4].getTheSpot().getCentroidX();
```

You can help study sharks!

Report your sightings

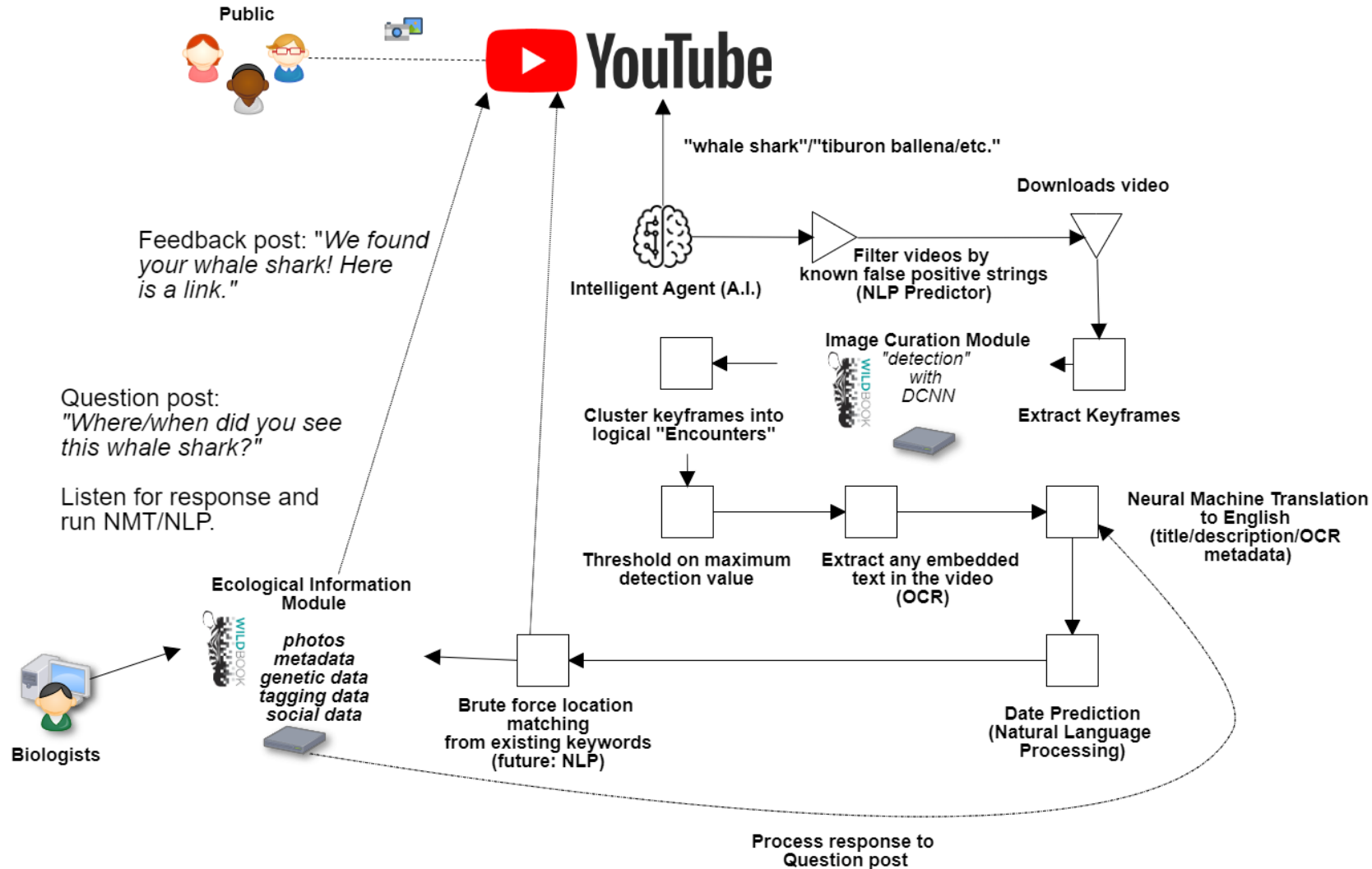
Adopt a shark



```
assigned to = MD-132
nickname = Wilma
location = Nosy Be
location ID = r'
```

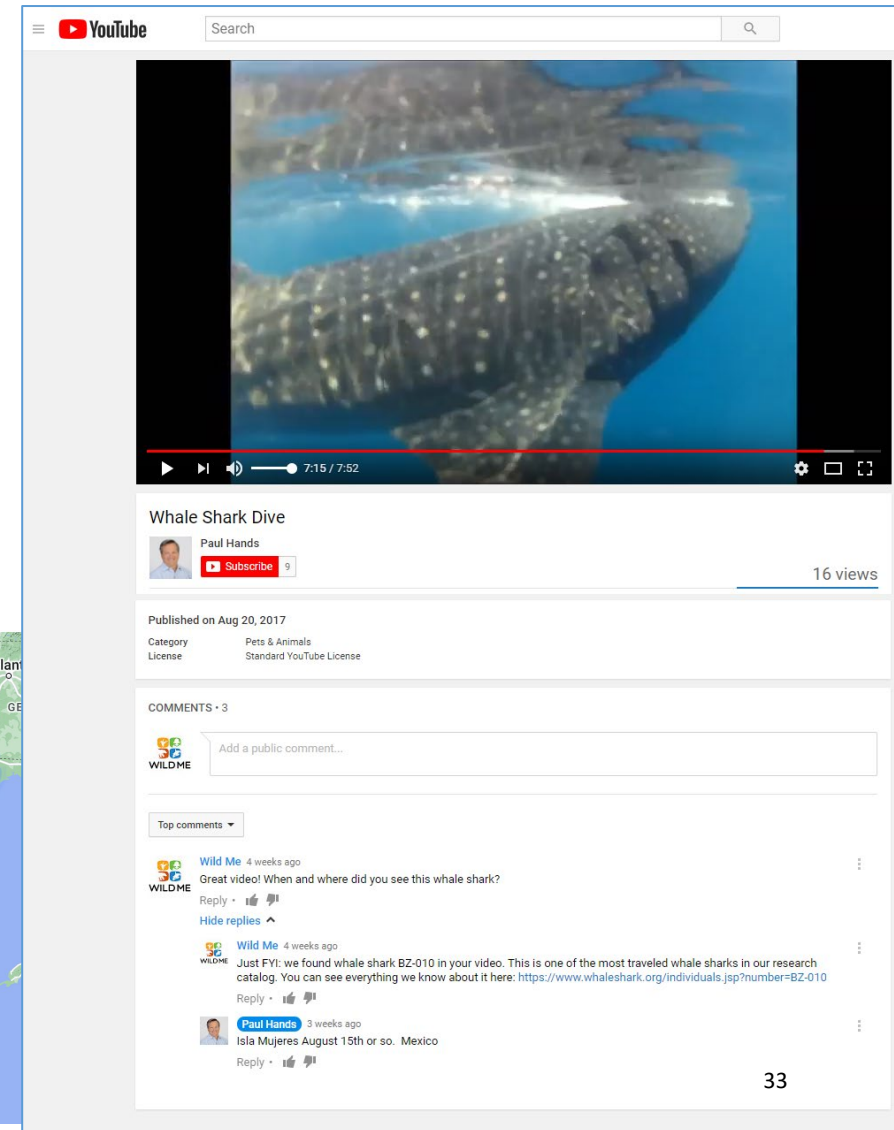
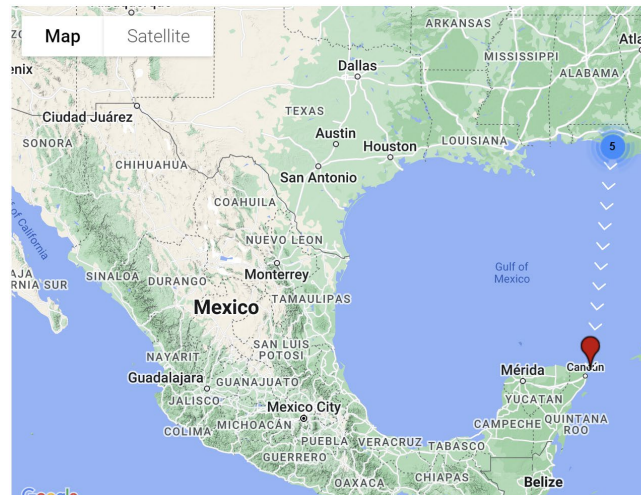


Sharkbook.ai (YouTube) Intelligent Agent Example

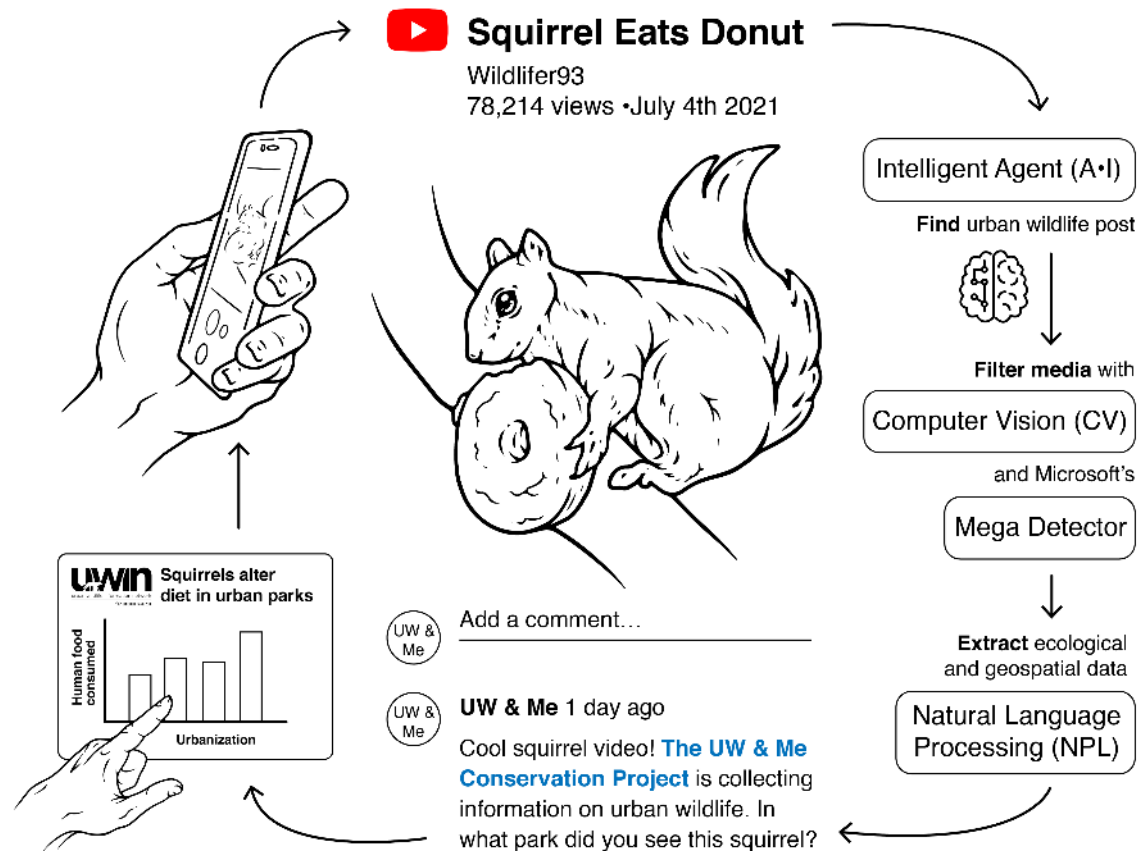


Intelligent Agents: It worked! (*too well!*)

- *Quality*: Data lower quality (35% utility) versus human researcher (70% utility)
- *Originality*: 90% data from intelligent agents unique
- *Discovery*: New movement routes between territorial waters
- *Engagement*: reached thousands of individuals never previously contacted
- *Flooded*: Annual data volume > all human researchers combined



Challenge: Translate to Urban Wildlife



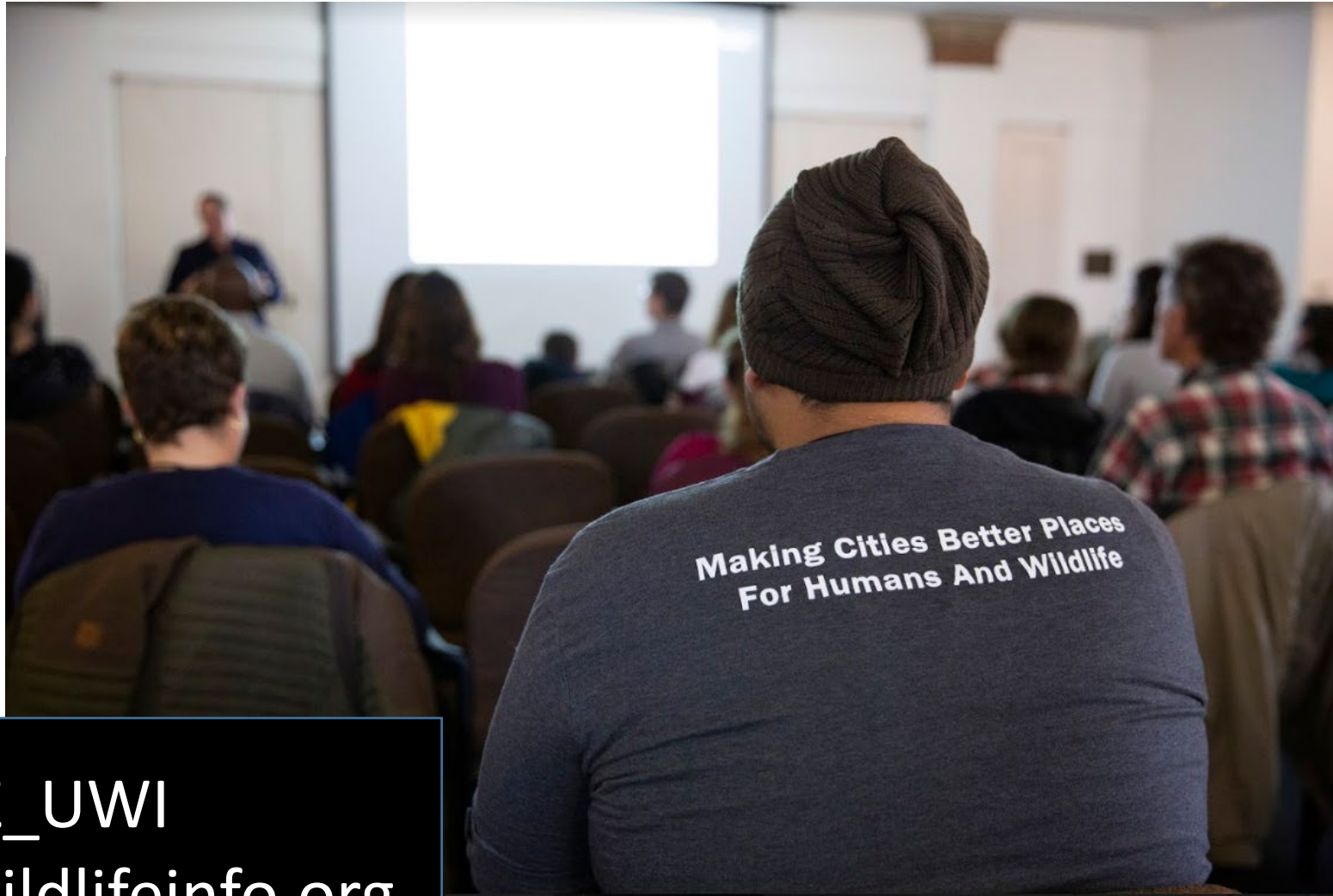
Thanks to the Partners of UWIN!



Connect. Care. Conserve.



Thank you for your support of UWIN!



@LPZ_UWI

www.urbanwildlifeinfo.org





@LPZ_UWI

www.urbanwildlifeinfo.org