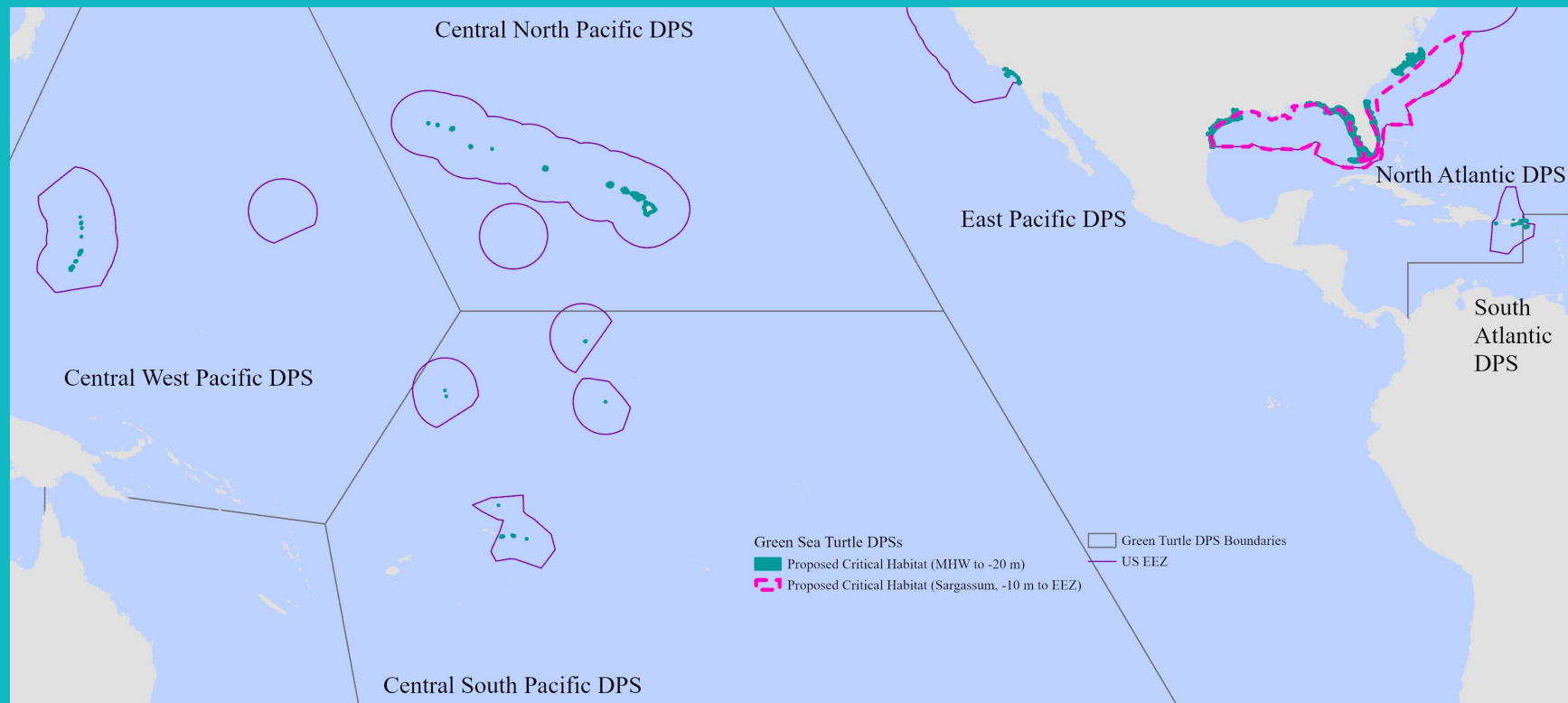




NOAA
FISHERIES

Proposed Marine Critical Habitat for the Atlantic Green Turtle DPSs

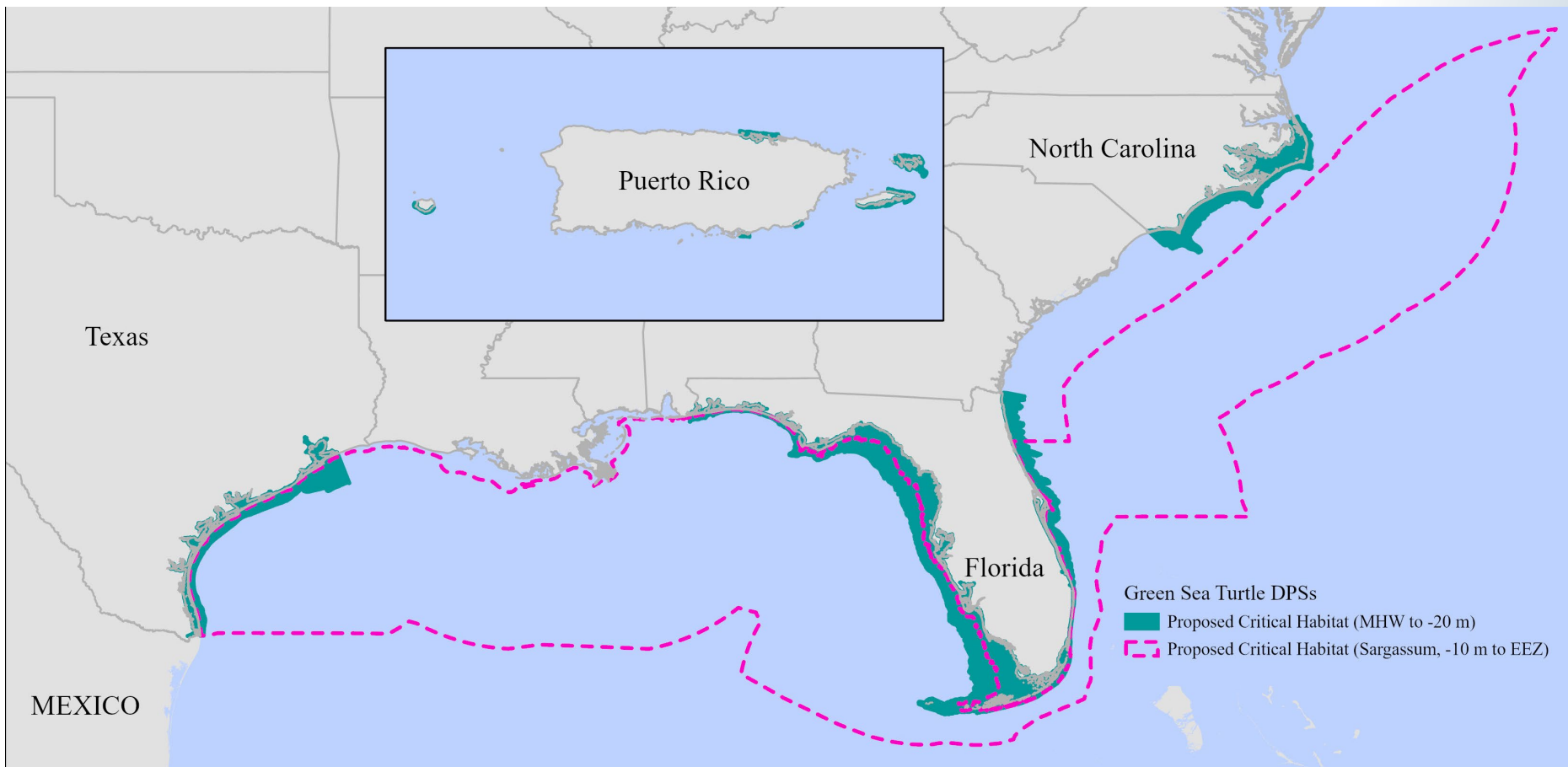


Features essential to the conservation of Atlantic green turtle DPSs in the marine environment

| Essential Feature | Life Stage | Life History Need | Habitat |
|------------------------------------|----------------|------------------------------|-------------------|
| Reproductive | Adult | Mate, transit, internest | MHW – 20 m |
| | Hatchling | Transit, “swim frenzy” | |
| Migratory (North Atlantic only) | Adult | Migrate | MWH – 20 m |
| Foraging/ Resting | Post-hatchling | Forage, rest, thermoregulate | 10 m – EEZ |
| | Small juvenile | | (Surface-pelagic) |
| | Juvenile | Forage, rest, thermoregulate | MWH – 20 m |
| | Subadult | | |
| Adult | | (Benthic) | |



North Atlantic DPS





South Atlantic DPS



NOAA
FISHERIES

Endangered Species Act Critical Habitat

What is critical habitat?

Critical habitat is habitat that contains features or areas essential for the conservation and recovery of species listed under the Endangered Species Act. It is a regulatory requirement affecting Federal actions; it is not a park, preserve, or a closed-area.

Why do we designate critical habitat?

When a species is listed under the ESA, we must designate critical habitat for that species.

How do we designate critical habitat?

We are required to designate critical habitat based on the best available science and after considering economic, national security, and other relevant impacts, as well as public input.

Who is affected by critical habitat?

Federal agencies. They must ensure that any action they permit, fund, or carry out is not likely to destroy or adversely modify critical habitat.

Where is critical habitat?

Critical habitat may be designated anywhere in the United States and its Territories.



Please see our website for more information on critical habitat:

www.fisheries.noaa.gov/national/endangered-species-conservation/critical-habitat



**NOAA
FISHERIES**

Submit comments by October 17, 2023:

- Regulations.gov
 - FWS-R4-ES-2022-0164
 - NOAA-NMFS-2023-0087
- Public hearings, or
- Via mail (see websites for more information):
 - <https://www.fws.gov/library/collections/green-sea-turtle-critical-habitat>
 - <https://www.fisheries.noaa.gov/action/critical-habitat-green-sea-turtles>



NOAA
FISHERIES

Timeline

- July 19, 2023 Proposed rule published
- August 29, 2023 Virtual informational meeting and public hearing: informational meeting at 6:00 PM, public hearing from 7:00 to 8:00 PM
- October 17, 2023 Comments due
- March-May 2024 Federal inter-agency review (90 days)
- July 19, 2024 Publish final rule to designate critical habitat



NOAA
FISHERIES