



# **North American Wetlands Conservation Act**

## **United States Standard Grants**

### ***2021 Proposal Instructions***

**Proposal Deadlines: FEBRUARY 26, 2021 & JULY 9, 2021**

**Program Authorizing Legislation:** North American Wetlands Conservation Act (16 USC Ch. 64)

**Paperwork Reduction Act Statement:** We are collecting this information in accordance with the legislative authority listed above. Your response is required to obtain or retain a benefit. We will use the information you provide to conduct a competitive review and selection process for funding and, if awarded, to evaluate performance. We may not conduct or sponsor and you are not required to respond to a collection of information unless it displays a currently valid OMB control number. We estimate that it will take you on average about 100 hours to complete an initial application, including time to maintain records, and gather information. This does not account for time planning and coordinating the project components. Actual time for these activities will vary depending on program-specific requirements. You may send comments on the burden estimate or any other aspect of this information collection to the Information Collection Clearance Officer, U.S. Fish and Wildlife Service, MS BPHC, 5275 Leesburg Pike, Falls Church, VA 22041-3803.

OMB Control Number: 1018-0100 (Expires: 7/31/2021)

## TABLE OF CONTENTS

INTRODUCTION	<a href="#">page 4</a>
HOW TO MAKE YOUR PROPOSAL SUCCESSFUL	<a href="#">page 4</a>
MAJOR CHANGES/UPDATES FROM THE 2020 INSTRUCTIONS	<a href="#">page 5</a>
PROJECT OFFICER'S PAGE	<a href="#">7</a>
PROPOSAL SUMMARY	<a href="#">page 9</a>
FINANCIAL TABLE	<a href="#">page 12</a>
WORK PLAN	<a href="#">page 14</a>
WORK PLAN FORMAT	<a href="#">page 17</a>
TECHNICAL ASSESSMENT QUESTIONS	<a href="#">page 21</a>
TECHNICAL ASSESSMENT QUESTIONS FORMAT	<a href="#">page 22</a>
1. TAQ #1	<a href="#">page 22</a>
2. TAQ #2	<a href="#">page 23</a>
3. TAQ #3	<a href="#">page 24</a>
4. TAQ #4	<a href="#">page 25</a>
5. TAQ #5	<a href="#">page 26</a>
6. TAQ #6	<a href="#">page 27</a>
7. TAQ #7	<a href="#">page 28</a>
SCORING TABLE	<a href="#">page 31</a>
TRACT TABLE AND FINAL TITLEHOLDER SUMMARY	<a href="#">page 32</a>
PARTNER CONTRIBUTION STATEMENTS	<a href="#">page 33</a>
PARTNER CONTRIBUTION LETTER TEMPLATE	<a href="#">page 35</a>
OPTIONAL MATCHING CONTRIBUTIONS PLAN	<a href="#">page 36</a>
OPTIONAL PROGRAMMATIC PROJECT REQUEST	<a href="#">page 36</a>
STANDARD FORM-424 AND SF-424D INSTRUCTIONS	<a href="#">page 37</a>
MAPS	<a href="#">page 38</a>
MAP EXAMPLES	<a href="#">page 39</a>
GIS SHAPEFILE INSTRUCTIONS	<a href="#">page 42</a>
PROPOSAL EASEMENT, LEASES, AND INDIRECT COST RATE AGREEMENT	<a href="#">page 43</a>
PROPOSAL EXAMPLES BY SECTION	<a href="#">page 43:</a>

1. SUMMARY PAGE [44](#)
2. FINANCIAL PLAN TABLE [page 46](#)
3. WORK PLAN [page 48](#)
4. TAQ #1 [page 52](#)
5. TAQ #2 [page 52](#)
6. TAQ #3 [page 54](#)
7. TAQ #4 [page 55](#)
8. TAQ #5 [page 56](#)
9. TRACT TABLE [page 57](#)
10. MATCHING CONTRIBUTION PLAN (OPTIONAL) [page 58](#)

OTHER ATTACHMENTS [page 59](#):

- A. TAQ #2 PRIORITY NAWCA SPECIES LIST [page 59](#)
- B. NAWCA PRIORITY BIRD CROSSWALK LIST [page 65](#)
- C. NAWCA PRIORITY GULF SPILL FUNDING ZONES [page 67](#)

## INTRODUCTION

These instructions are applicable to U.S. Standard Grant proposals submitted through July 9, 2021.

### HOW TO MAKE YOUR PROPOSAL SUCCESSFUL

#### **Contact the Division of Bird Habitat Conservation (DBHC) with any Questions you may have.**

DBHC staff is responsible for reviewing each proposal, proposal component, and recipient for eligibility. The rules, regulations and policies that govern financial assistance under a North American Wetlands Conservation Act (NAWCA) grant can be difficult to navigate. It is highly recommended you contact DBHC directly with any questions you may have, especially with questions regarding eligible activities. A proposal will be automatically ineligible if the margins and font style/size are modified from the Proposal Outline Template, or if the proposal is missing enough sufficient information necessary to consider the proposal complete. To review NAWCA Eligibility Criteria and Processes, visit: <https://www.fws.gov/birds/grants/north-american-wetland-conservation-act/how-to-apply-for-a-nawca-grant.php>.

#### **Proposal Outline Template and Other Information**

We recommend that you prepare the Work Plan, Financial Plan Table, and Tract Table before developing the rest of the proposal. These will provide a reference point to ensure that the proposal data is consistent throughout all sections. For Proposal Outline Template and other information visit: <https://www.fws.gov/birds/grants/north-american-wetland-conservation-act/how-to-apply-for-a-nawca-grant.php#us-standard>

#### **Migratory Bird Joint Venture**

We recommend coordinating with your local Migratory Bird Joint Venture. Joint Ventures are located throughout the United States and may be able to assist with partnership opportunities: <https://www.fws.gov/birds/management/bird-conservation-partnership-and-initiatives/migratory-bird-joint-ventures/joint-venture-directory.php>

#### **Applying for a NAWCA US Standard Grant**

If your organization is registered in GrantSolutions ([www.grantsolutions.gov](http://www.grantsolutions.gov)), you can now apply for grant opportunity announcements directly. This is the recommended method. The instructions to apply for an announcement within GrantSolutions are described below. You must also fill out the SF-424 and SF-424 D forms in GrantSolutions. The narrative portion (your proposal) and supporting documentation should be attached to your GrantSolutions application.

If your organization is not registered in GrantSolutions, you must use Grants.gov to submit your application. Your Grants.gov application (the “proposal package”) includes the forms SF-424 and SF-424D and your proposal and attachments.

If you send us a proposal by email but do not submit your application through either GrantSolutions or Grants.gov, your proposal will not be eligible.

After you complete your application, email the application confirmation number (Confirmation number will start with FWS-MB followed by year and six numbers) to [dbhc@fws.gov](mailto:dbhc@fws.gov)

Federal Applicants: email proposal and all supporting documents to [dbhc@fws.gov](mailto:dbhc@fws.gov)

Grantsolutions.gov, Grants.gov and SAM.gov are free websites. Do not pay for your SAM.gov

registration or renewal, and do not provide any information to any scammers who may contact you.

### **Steps to apply for a grant opportunity in GrantSolutions:**

1. To register for a user account, visit <https://home.grantsolutions.gov/home/getting-started-request-a-user-account/>
2. In “Request a user account”, go to GrantSolutions Self Registration and click on Electronic User Request Form.
3. To complete your GrantSolutions account setup, someone in your organization needs to be assigned the role of “Grantee Administrative Official/Grantee Authorized Representative”.
4. Once your organization is set up in GrantSolutions, your organization will be able to apply for directed grant announcements within GrantSolutions. Below is a link that explains how to do Apply for a Directed Announcement:

<https://www.grantsolutions.gov/support/public/pdf/QuickSheetDirectedAnnouncement.pdf>

### **Steps to register in DUNS:**

All organizations must have a current Dun and Bradstreet number (DUNS). Below is the link to obtain a number:

<http://fedgov.dnb.com/webform>

This generally takes 12 business days. After acquiring a DUNS number, you will then need to register in the System for Award Management (SAM). You must have an active System for Award Management (SAM) registration to apply through GrantSolutions.gov, to receive an award, and to be able to receive funds. We strongly encourage applicants to initiate this process at least 6 weeks before our deadline, because it can be a complex process. If your organization is registered with SAM.gov but your status is not listed as “active,” you must update your registration prior to submitting an application. You must renew and revalidate the SAM registration at least every 12 months and ensure that all information is up to date.

### **Proposal Deadlines**

The U.S. Standard Program consists of two submission cycles. Complete proposals must be submitted by **February 26, 2021 and July 9, 2021**. Any group or individual may submit proposals at any time before those dates. Proposals received after the February deadline will be considered for funding as a July submission. Proposals received after the July 2021 deadline will be ineligible unless the proposal is clearly labeled as an early 2023-1 submission (these will be subject to modifications if there are changes in the 2023 submission guidelines).

### **Integrity of Scientific and Scholarly Activities**

In 2011, the Department of Interior (DOI) established a policy to ensure and maintain the integrity of scientific and scholarly activities used to inform management and public policy decisions: DOI Policy, 305 DM 3, "[Integrity of Scientific and Scholarly Activities](#)". The scientific integrity policy applies to the DOI employees, contractors, grant recipients, and volunteers when they analyze or share scientific information with the public or use DOI's information to make policy or regulatory decisions. This policy applies to all funding applications received by the North American Wetlands Conservation Act grant programs. Essentially, the use of false data to leverage grant funds is a direct violation of DOI's scientific integrity policy and requires the refund of any associated federal assistance.

### **Partner Contribution Statements**

We will only accept properly formatted Partner Contribution Statements as verification of partner match. Submitting partner letters that do not follow the format in the guidelines will adversely affect the timely review of a proposal and may result in the contribution being considered as non-match.

**MAJOR CHANGES/UPDATES FROM THE 2020 US STANDARD GRANT INSTRUCTIONS**

- **Edited language on Proposals Requesting Over \$1,000,000**  
 Proposals requesting over \$1,000,000: Applicants must include an explanation justifying the request and attach it after the Summary Page. The Council will evaluate the request and approve/disapprove based on factors such as opportunity, resource values involved, threat level, loss of match and/or the amount of available funding.
- **From page 3 of the 2020 Eligibility Criteria and Processes:**  
 What is a proposal?  
 1. A 2-year plan of action (not including the 2-year old match window) supported by a NAWCA grant and partner funds to conserve wetlands and wetland-dependent fish and wildlife through acquisition (including easements and land title donations), restoration, enhancement, and/or wetland establishment, and contains a grant request between \$1 and \$1,000,000. Proposals requesting \$100,000 or less will be considered as a NAWCA Small Grant. Proposals requesting between \$100,001 and \$1,000,000 will be considered a NAWCA Standard Grant. The grant request may exceed \$1,000,000, but must be accompanied by a justification of need. The North American Wetlands Conservation Council (Council) will evaluate the request and approve/disapprove based on factors such as opportunity, resource values involved, threat level, loss of match and/or the amount of available funding. Contains match that is no more than 2 years old, is non-Federal in origin and is equal to, or exceeds, the grant request (referred to as a 1:1 match).
- **Technical Assessment Question 3, Part B –**

*TAQ3 Page 24 of 2020 Proposal Instructions is worded as is:*

**B. Regional important wetland areas:**

Briefly describe how the proposed grant and match activities will address the current regional geographic priorities based on Joint Venture and other partner’s science and planning information. It is prudent to work closely with Joint Venture staff to ensure that this proposal is based on the most current science and planning for all wetland associated migratory birds.

---

**TECHNICAL ASSESSMENT QUESTION #3**

**How does the proposal location relate to the geographic wetland priorities described by the North American Waterfowl Management Plan, Partners In Flight, the U.S. Shorebird Conservation Plan, and/or the North American Waterbird Conservation Plan, along with regional priorities?**

**A. National wetland conservation priorities:**

National Bird Plan Priority Areas	In	Partially In	Out
NAWMP			
PIF			
Wading Birds			

Shorebirds			
------------	--	--	--

**B. Regional wetland conservation priorities:**

- Under Work Plan Formatting, the following was added:
  10. There is no requirement to acquire a real property interest on a restoration, enhancement, or wetland creation project. However, recipients and subrecipients should have a project agreement with the landowner(s) that is consistent with the project design or designed lifespan of the constructed activity (e.g. restoration). A properly built project should seek to maximize the projects’ lifespan, while promoting efficient management and maintenance.
  11. Applicants must provide a statement specifying the management period for the designed lifespan or useful life of all construction (e.g. new water channel, levee, weir, pumps, other types of water control structure, etc.), as indicated in Technical Assessment Question 5. If the applicant proposes a management period or useful life of 25 years or less, with a value greater than \$100,000, applicants must reference the method used to determine the useful life.
  12. Applicants must identify and fully explain proposal components that were funded by a previous NAWCA grant (e.g. tracts and work accomplished).

## PROJECT OFFICER'S PAGE

To download full Proposal Outline Template, visit:

<https://www.fws.gov/birds/grants/north-american-wetland-conservation-act/how-to-apply-for-a-nawca-grant.php#us-standard>

**Please do not include a cover/transmittal letter at the beginning of the proposal.** The Project Officer's page should be the first page of the proposal. Do not adjust margins on the Project Officer's Page. The information below in italics is intended to assist you as you complete the blank proposal outline.

**What is the proposal title?** *Due to database limitations, it is critical that the title be limited to 80 characters (including spaces) and that phased proposals retain the original title with only the phase number changing. Enter a short, descriptive, and unique title, such as "Falcon Bottoms," "Turtle Bog Marsh," or "Great Bay." If the proposal is a phase of an earlier funded proposal, use the same title as the earlier proposal and include the appropriate Roman numeral to denote that this is a subsequent proposal, such as "Falcon Bottoms II."*

**What is the date you are submitting the proposal?**

**What are the geographical landmarks for the proposal?**

*List Counties and States that the tract(s) are included in; if tract(s) are unknown, then list all of the project area*

1. State(s):
2. County(ies): *List all counties in alphabetical order*
3. Congressional District(s): *Visit <https://www.census.gov/geo/maps-data/maps/reference.html> for the most up to date list of Congressional Districts or download the [Congressional District GIS shapefile](#) (select the most recent year and Congressional Districts).*
4. JV(s): *Identify the Migratory Bird Joint Venture area(s). Visit the [USFWS JV Directory website](#) or download the [JV GIS shapefile](#).*
5. BCR(s): *Identify the Bird Conservation Region BCR(s). Visit <http://nabci-us.org/resources/bird-conservation-regions-map/> or download the [BCR GIS shapefile](#).*

**Project Officer Information:**

1. Name: *The Project Officer **MUST** be the primary point of contact for the project and must be affiliated with/employed by the grantee's organization. List the person who will be managing the project activities, filing reports, and communicating with DBHC. Please note, this will be the only person DBHC communicates with regarding the project.*
2. Title:
3. Organization: *If the organization entered here is not the grantee organization, please explain. (See 2021 Eligibility Criteria and Processes)*
4. Applicant Organization Address (No P.O. Box Address): *City, State, Zip + 4 where available*
5. Project Officer Address (No P.O. Box Address): *City, State, Zip+ 4 where available*
6. Telephone number: *List the numbers at which the Project Officer can be reached, including work and cell numbers.*
7. E-mail address:
8. Additional Contacts: *We require a single Project Officer, but please list one other contact who may communicate with us pre- or post- award about the project should the Project Officer become unavailable. The Project Officer must be fully engaged in the proposal and project process. Provide name, email, and phone number.*
9. DUNS Number:

**Please answer the following questions:**



**Is an Optional Matching Contributions Plan (MCP) submitted with the proposal? Yes/No Or Does the proposal contain match associated with a previously submitted MCP? Yes/No**

**Are you requesting that this proposal be considered as a continuation of a previous grant agreement (a Programmatic Project Proposal)? Yes/No**

If yes, provide the title and grant agreement number of the previous grant agreement.

**Do you expect this project to be the first phase of a Programmatic Project? Yes/No**

**How many more proposals are planned for the same proposal area?**

**Will any of the NAWCA funds requested as part of this proposal be received or spent by the U.S. Fish and Wildlife Service or another Federal agency? Yes/No**

If yes, which agency (ies) will receive these funds and what is the fund amount:

Agency \_\_\_\_\_ Amount \_\_\_\_\_

(add additional lines as necessary and include accounting code if possible)

**Does this proposal include acquisition activities that will add to the National Wildlife Refuge System (NWRS)? Yes/No**

If yes, please indicate which NWRS program the acquisition(s) will be added to: National Wildlife Refuge (NWR) and which one(s), Waterfowl Production Area (WPA) and which one(s), or Small Wetland Acquisition Program (SWAP).

**Are carbon sequestration credits involved in your proposal? Yes/No**

If yes, please highlight and provide details in the appropriate financial plan narrative/work plan section. Include information about whether the credits will generate program income (Described in Grant Administration Standards).

**Will any portion of any tract or activities associated with any tract be used to satisfy wetland or habitat mitigation requirements under Clean Water Act, Rivers and Harbors Act, Fish and Wildlife Coordination Act, Water Resources Development Act, ecological service credits or other related statutes now or in the future? Yes/No**

If yes, please highlight and provide details in the appropriate financial plan narrative/work plan section.

**Have you confirmed that all partners, key personnel, and contractors are eligible to participate in Federal grants? Yes/No**

*Project Officer must confirm that parties are eligible to participate in federal grants by checking the Federal Excluded Parties List at: <https://www.epls.gov/>. If an ineligible party participates in a federally funded project, all or a portion of the federal funding may be terminated.*

**To ensure that the proposal complies with available guidelines and that partners are aware of their responsibilities, the Project Officer certifies to the following statement:** I have read the 2021 U.S. Standard Grant proposal instructions, eligibility information, and applicable U.S. grant administration policies and informed partners or partners have read the material themselves. To the best of my knowledge, this proposal is eligible and complies with all NAWCA, North American Wetlands Conservation Council, and Federal grant guidelines and the information submitted herein is true and correct. The work in this proposal consists of allowable and eligible work and costs associated with long-term wetlands and migratory bird habitat conservation. *If habitat or migratory bird benefits described in the proposal are found to be grossly exaggerated and/or intentionally misleading, the proposal may be declared ineligible and any resulting awards may be fully or partially terminated.*

**Audit reports.** If the applicant organization expended more than \$750,000 of federal funds during the last calendar year, please include a copy of your most recent of SF-FAC that was submitted to the Federal Audit Clearinghouse. If your organization did not expend more than \$750,000 of federal funds last year, please certify that the Single Audit (formerly A-133) was not required.

**Required Overlap/Duplication Statement:** Applicants must provide a statement that addresses whether there is any overlap between the proposed project and any other active or anticipated projects in terms of activities, costs, or time commitment of key personnel. If any overlap exists, applicants must provide a description of the overlap in their application. Applicants must also state if the proposal submitted for consideration under the program is/is not in any way duplicative of any proposal that was/will be submitted for funding consideration to any other potential funding source (Federal or non-Federal). If such a circumstance exists, applicants must detail when the other duplicative proposal(s) were submitted, to whom (entity name and program), and when funding decisions are expected to be announced. If at any time a proposal is awarded funds that would be duplicative of the funding requested from the Service, applicants must notify the Service point of contact for this funding opportunity immediately. *This requirement can be a few short sentences explaining whether there is any overlap between or among proposed projects. For instance, you will need to include an overlap statement if you submitted a tract(s) for funding consideration in a NAWCA Small Grants proposal and also submitted that same tract(s) for consideration under a U.S. Standard Grants proposal (or vice versa).*

**Do you have any comments about, or suggestions for, the NAWCA program?**

You may provide comments with this proposal, or send them at any time.

- By mail to:                   Coordinator, North American Wetlands Conservation Council  
                                  U.S. Fish and Wildlife Service  
                                  Division of Bird Habitat Conservation  
                                  Mail Stop: MB  
                                  5275 Leesburg Pike  
                                  Falls Church, VA 22041-3803
- Via phone to:               703-358-1748
- Via e-mail(preferred) to:   [dbhc@fws.gov](mailto:dbhc@fws.gov)

**PROPOSAL SUMMARY (3 pages maximum and can be in Word or pdf format; no scanned summaries)**

The Proposal Summary is the only narrative material provided to the North American Wetlands Conservation Council and Migratory Bird Conservation Commission so it must be descriptive and succinct. Consider developing the Summary after you have written the rest of the proposal, as this will help ensure that information in the Summary is consistent with the proposal. The Proposal Summary must follow the format provided in the blank proposal outline exactly, including margins, spacing, font size, etc. Click here for the [Proposal Summary Example](#).

**General Requirements**

1. The Proposal Summary will be used as a stand-alone document and will be subject to editing by the U.S. Fish and Wildlife Service. Start the Proposal Summary on a new page (i.e., do not begin the Proposal Summary on the same page as the Project Officer’s page), and enter a page break at the end of the Proposal Summary. Save the Proposal Summary in a separate file for ease of editing.
2. Do not number Proposal Summary pages. Starting with the Financial Plan Table as page 1, number all remaining pages.
3. The Proposal Summary, which includes tabular and narrative information, may be a maximum of three pages.

4. All margins must be 1 inch. Failure to adhere to margin requirements may affect eligibility of your proposal.
5. Format must be a PDF version
6. Font size: 11 point and Font type: Times New Roman. Failure to adhere to font size requirements may affect the eligibility of your proposal.
7. The information in the summary table must exactly match the information provided elsewhere in the proposal.

**Specific Requirements** (see [Proposal Summary Example](#)).

1. Center “NORTH AMERICAN WETLANDS CONSERVATION ACT PROPOSAL SUMMARY” in all capital letters at the top of the page, and center the project title and state with initial capital letters beneath it. If the proposal is a phase of an earlier funded proposal, use the title of the earlier proposal with an appropriate Roman numeral denoting the phase number.
2. All other information is left justified, without indentation, except for financial totals on the right side of the page, which are right justified.
3. Type the header for each paragraph category in all capital letters (e.g. COUNTY (IES), STATE(S), CONGRESSIONAL DISTRICT(S); GRANT AMOUNT; MATCHING PARTNERS; etc.).
4. Using the prescribed format shown in the example, provide the requested information for each category. **However, do not include categories shown in the example if no information for that category exists.** For instance, if there is no restoration work being done, do not include a “Restored” line in the “ACTIVITIES, COSTS AND ACRES” section.
5. Enter the total grant amount on the right side of the page, right justified, on the same line as the header “GRANT AMOUNT.” Under “Grant Amount”, type “Allocation:” Enter the name of the organization(s) that will be allocated grant funds (normally, this will be the Grantee organization, which administers the funding as planned in the proposal; however, in certain circumstances, other organizations may be receiving grant funds directly). Enter the allocation amount after the organization(s) name. Enter the total for MATCHING PARTNERS, and the total for ACTIVITIES, COSTS AND ACRES each on the same line as their respective headers, in alignment with the total grant amount.
6. MATCHING PARTNERS: Enter the grantee organization and contribution (if applicable) immediately underneath the category header. List the matching partners and their contributions under the grantee. Provide the full partner name; do not abbreviate. List the individual match contributions in tabular format (see example). **For the grantee or partner associated with a Matching Contributions Plan (MCP), list the amount associated with the MCP phase as the contribution amount on a separate line.**
7. GRANT AND MATCH - ACTIVITIES, COSTS AND ACRES: Insert the total costs and acreage associated with the grant and match funds to the right on the same line as the header (right justified). Under the header, list one or more appropriate activities, costs, and acreages from the following activity categories: Fee Acquired; Fee Donated; Easement(s) Acquired; Easement(s) Donated; Lease(s) Acquired; Lease(s) Donated; Restored; Enhanced; Wetland Established; Other; Indirect Costs. **List the activities in that order, but do not list categories in which no activity will take place.** After each category listed, indicate the amount being expended in tabular format, and then type a slash (/) and the total acreage involved. If building envelope acres are involved with any activities, ensure that these acres are not included in the acreage totals for the proposal.
  - Include only those activities, costs, and acres associated with grant or match funds. See the instructions for the Financial Plan Table below for contributions from non-match funds.
  - If acquired acreage also will be restored or enhanced in the current proposal, place parentheses around the restored or enhanced acreage to show that they have already been accounted for under the acquired category. These are referred to as non-additive or non-add acres. Non-add acres should also be indicated if restoration or enhancement activities are occurring on a property acquired in a previous phase or another NAWCA project.

In the following simplified example, 300 new acres are to be acquired in Fee Title using grant and/or match funds.

- 200 new acres are to be restored using grant and/or match funds; 150 of the 300 acres acquired in fee in this project are also restored – (150); an additional 200 acres acquired in a previous NAWCA project will also be restored – (200).
- 100 new acres are to be enhanced using grant and/or match funds; 100 of the 300 acres acquired in fee are also enhanced – (100); an additional 300 acres acquired in a previous phase will also be enhanced – (300).

GRANT AND MATCH - ACTIVITIES, COSTS AND ACRES	\$2,050,000/600 (750) acres
Fee Acquired	\$1,000,000/300 acres
Restored	\$500,000/200 (350) acres
Enhanced	\$500,000/100 (400) acres
Other	\$50,000

- 8. NON-MATCHING PARTNERS: List all non-matching partners and contributions in the same format as for matching partners. List contributions only; do not include acres or activities.**
- 9. MATCHING CONTRIBUTIONS PLAN:** If a partner’s match amount is associated with a MCP (either a new MCP submitted with the proposal or a follow-on phase for a MCP previously approved by the Council), list only the match amount that is being applied to the current proposal. MCPs can only be submitted for excess match associated with the acquisition of a single tract.

All of the acres associated with a new MCP are listed with the appropriate activity. Acreage associated with a previously approved/used MCP does not appear in subsequent proposals; list the MCP amount attributed to the current proposal as “Previously Approved MCP Funds”.

In the following simplified examples, costs and acres are listed along with the correct format for a new MCP (example 1) and the second phase of a previously approved MCP (example 2):

Example 1.

- 400 new acres are to be acquired in Fee Title using grant and/or match funds (total cost = \$2,000,000).
- 100 additional match acquisition acres are the basis for a new MCP (total appraised value = \$3,000,000).

GRANT AND MATCH - ACTIVITIES, COSTS AND ACRES	\$3,000,000/500 acres
Fee Acquired	\$3,000,000/500 acres [this includes all of the MCP acres and \$1,000,000 of the value of the MCP]

Example 2.

- In this example, the MCP is the second phase of the previously approved MCP (\$2,000,000 remains after the initial phase). No acres are listed because these have been accounted for in the initial phase. Only the \$2,000,000 cost associated with this phase of the MCP is listed.
- 300 new acres are to be acquired in Fee Title using grant and/or match funds (\$1,000,000).

GRANT AND MATCH - ACTIVITIES, COSTS AND ACRES	\$3,000,000/300 acres
Fee Acquired	\$1,000,000/300 acres
Previously approved MCP funds	\$2,000,000

This phase would close out the MCP.

10. **PROPOSAL PURPOSE AND DESCRIPTION:** Describe the proposed project’s goals and objectives; why the work is proposed; who will be doing what activity (ies); where they will be doing the activity (ies) (for example, on a Refuge, on private land, near a conservation area); how they will accomplish the work (building dikes, installing water-control structures, etc.); what, if any, joint venture is involved or benefiting.
11. **HABITAT TYPES AND WILDLIFE BENEFITTING:** Describe the habitat types involved in the proposed proposal activities; provide examples of the species (Blue-winged Teal, American Bittern, etc.) benefiting and their uses of the habitats (breeding, feeding, resting, etc.).
12. **PUBLIC BENEFITS/PUBLIC ACCESS:** Describe the benefits of the proposal to the public (hiking, hunting, birding, education, water quality, etc.); describe whether any of the grant/match tracts will allow public access, and if so, what type of access.
13. **NEW PARTNERS:** Identify partners who have never previously participated in any NAWCA grant.
14. **RELATIONSHIP TO PREVIOUSLY FUNDED NAWCA PROPOSALS:** If applicable, summarize the relationship of the current proposal with previously funded NAWCA proposals in the region and show how the current proposal adds to progress (if any) towards regional conservation goals for habitats and/or birds. If this is a phased NAWCA proposal and/or if your organization has received other NAWCA Standard grants in the same general area specifically identify the cumulative habitat achievements of previous phases and how the landscape and the bird populations of that landscape have changed.
15. **THREATS AND SPECIAL CIRCUMSTANCES:** Describe any threats to habitats in the proposal area or other circumstances that make funding at this time particularly important.

**Proposals Requesting Over \$1,000,000**

Applicants must include a 1-page maximum explanation justifying the request and attach the justification after the Summary Page. Specifically address opportunity, resource values involved, threat level, and loss of match in a table format. Explain why the project either cannot be accomplished with \$1,000,000 in grant funding or can be accomplished more effectively with the requested amount. The Council will evaluate the request and approve/disapprove based on the information provided along with consideration of the overall amount of funding available.

Opportunity	
Resource Values Involved	
Threat Level	
Loss of Match	

**Matching Contribution Plans (Optional)**

If any match was previously approved by the Council via an optional Matching Contributions Plan (MCP), include a copy of the DBHC email approving the MCP and provide the following information: tracts affected, how much of each partner’s match has been used in previous proposals, how much is being used in this proposal, and how much will remain after the current proposal is funded (Click here to see an [example of an MCP table](#)).

**FINANCIAL TABLE**

**NOTE: Landowner and tract names must be consistent throughout the proposal**

**Insert the Financial Plan Table as page 1, after the Summary Pages.**

1. Complete the Financial Plan Table provided in the Word proposal outline or Excel template and insert

it as page 1. Click here for the [Financial Plan Table Example](#). You may submit additional tables if those will help explain the financial plan, but keep to a minimum. The Word Proposal Outline contains a blank Financial Plan Table or you may use the table in the Excel Tables Template workbook found here: <https://www.fws.gov/birds/grants/north-american-wetland-conservation-act/how-to-apply-for-a-nawca-grant.php#us-standard>.

2. Identify each tract (or logical groupings of tracts) using a consistent method on all maps and throughout the proposal. Show all costs covered by the grant, each matching partner, and each non-matching partner for all grant/match tracts. Non-match should not be listed in the table unless it has been pooled with grant/match dollars to accomplish grant/match acres. Entirely non-match tracts and activities should not be included in the table.
3. For all grant expenditures, list the partner that will be spending grant funds on the same line item.
4. You may show grant and one partner’s contribution on one line for the same tract if that partner will be receiving grant funds, but do not combine different partner contributions on the same line. For example, if there are 10 separate partners contributing to fee acquisition for a particular tract, then there should be 10 separate partner entries for that tract. Add lines to the table as needed. In the [Financial Plan Table Example](#), multiple lines were added under Land Costs: Fee Acquired to demonstrate separate lines for each partner. In the example, lines were added under “Land Costs: Fee Acquired” because different tracts are affected and they should not be lumped.
5. Separate match funds into "Old" (spent prior to proposal submission) and "New" (to occur after proposal is submitted and during the Grant Agreement period).
6. If you are submitting a MCP, be sure the Financial Plan Table only includes funds for the current proposal and not the entire contribution in the MCP. Costs from the first phase of an MCP should appear with the activity and partner in the appropriate direct cost category. For subsequent phases of an MCP, enter the MCP match costs in line L. PREVIOUSLY APPROVED MCP, which is above line M. GRAND TOTAL DIRECT costs, and list the appropriate amount as old match.

**Previously Approved MCP example (showing final portion of Financial Plan Table only):**

ACTIVITIES	GRANT \$	ABBREVIATED PARTNER NAME	OLD MATCH \$	NEW MATCH \$	TOTAL GRANT + MATCH \$	TRACT ID	NON-MATCH \$
<b>L. PREVIOUSLY APPROVED MCP</b>		PARTNER A	<b>\$3,000,000</b>		<b>\$3,000,000</b>		
<b>M. GRAND TOTAL DIRECT (Sum of G and H, I, J, K, L)</b>	<b>\$1,000,000</b>		<b>\$4,000,000</b>	<b>\$3,500,000</b>	<b>\$8,500,000</b>		<b>\$500,000</b>
Indirect Costs		PARTNER B		\$5,000	\$5,000	4	
<b>N. TOTAL INDIRECT</b>				<b>\$5,000</b>	<b>\$5,000</b>		
<b>GRAND TOTAL (Sum of M and N)</b>	<b>\$1,000,000</b>		<b>\$4,000,000</b>	<b>\$3,505,000</b>	<b>\$8,505,000</b>		<b>\$500,000</b>

7. Show each private landowner by name, contribution amount, and tract if they are contributing to grant/match acres.
8. For acres being acquired, restored, or enhanced by pooling both grant/match funds and non-match funds, and in which NAWCA will acquire an undivided interest in those acres, list the total costs in either grant or match in the table, as appropriate. Do not pro-rate acres between grant or match (See item 2 for clarification on when to include non-match).
9. All cost categories are shown in the Word and Excel template. Do not include categories that do not apply to your proposal (e.g., if there is no enhancement in your proposal, then delete those activity rows).
10. You may use a landscape orientation, versus portrait, for the printed page if needed.
11. You may abbreviate partner names in the table, but be sure to spell them out in the Partner Information section in the bottom portion of the Financial Plan Table.

12. Below the Financial Plan Table in the Partner Information section, list each sub-grantee who will receive, because of this proposal, any of the following:
- Federal grant funds or “new” matching funds,
  - Property (e.g., land structures, dikes, levees, earthen dams, equipment, supplies) that will be purchased with Federal grant or matching funds or
  - Property committed as “new” match.
  - Contractors or vendors who will be paid for goods, construction, planting or services purchased for the proposal and individuals are NOT considered sub-grantees.

## WORK PLAN

The work plan is constructed as series of discrete, stand-alone activities (e.g., fee acquisition, easement donation, restoration, enhancement, etc.) associated with specific tracts. See the [Work Plan Example](#). The work plan should include only grant/match tracts. Eligible non-match dollars pooled with grant/match dollars to accomplish grant/match acres may be listed in the work plan, but acres and dollars that are entirely funded by or attributed to non-match should NOT be included in the work plan.

For the first phase of an MCP, list associated activities/costs with the appropriate tract(s). MCP costs in subsequent proposals should be shown under “Other Direct Grant/Match Activities”, with the name and phase of the MCP listed under “Item & Work”.

### Work Plan Formatting

13. Use the following format for identifying tracts. Each tract should be numbered sequentially starting with “1” and given an identifying name (e.g., Tract 1 - Howard Farms, Tract 2 - Brancheau Wetland, Tract 3 - McIntyre). Describe the work to be done using the format in the example. The tract name should exactly match that used in other sections throughout the proposal. Include the following information:
- a. Tract name, overall number of acres affected on the tract (for instance, if there are 300 acres acquired and 100 of those acres will be restored, the overall acreage affected is 300; the restoration acres would be listed as (100)), tract location (central latitude/longitude in decimal degrees format. Example: 38.752906, -77.1084432), and a list of state or Federal government agencies (if any) with a legal interest in the property (such as those with Notices of Funding or Grant Restrictions on fee deeds or easements).
  - b. For each tract, list the acreages for each of the activities associated with the tract. Identify non-add acres (acres already accounted for in a previous activity: 100 acres acquired and restored – the 100 restored acres are non-add) in parentheses.
  - c. Under each tract listed, type the applicable Work Plan activity category titles in all capital letters and list the total cost and acreage for that activity category within that tract. Identify non-add acres for a tract in parentheses. For example, “ACQUISITION FINANCIAL PLAN JUSTIFICATION - \$3,000,000 AND 10,000 acres”. On the next line, separately enter the amount of grant, match, and non-match funding for that activity category within that tract. All costs (“Total \$” column in each table below) must be described and equal the figures in the activity category headers. Identify an actual or estimated timeframe for completion of that activity.
  - d. Describe all grant and match activities that will occur on each tract. If multiple activities take place on the same tract, describe them separately but identify if acres overlap between activities. For example, if a proposal includes land acquisition with restoration work done on the same site, this would be described as two separate activities.
14. For each activity, include a clear description of the work to be done and briefly justify why that activity is being included as part of this proposal.
- a. **Acquisition activities:** Describe how they enable better management or create a restoration

opportunity or if they are needed because the site is currently valuable habitat vulnerable to development. Fee acquisition of lands already protected by a conservation easement must be justified.

- b. **Habitat restoration, enhancement, and establishment activities:** Identify specific habitat types and plant communities affected by project activities. Those habitat types should be identified in Joint Venture implementation plans or similar documents. If a tract includes invasive species treatments or implementation of any type of fencing material, include answers to these questions:
- What invasive species are present and how will the invasive species be treated (e.g., mechanical or chemical application)? If mechanical, explain what will be done? If chemical application, what kind of chemical will be used and how many applications will be done? If other control methods will be used, please describe.
  - What is the expected duration of the treatment(s)?
  - Who is responsible for maintaining the invasive species control after the treatment and for how long?
  - If working with private landowner(s), is there an agreement involved?
  - How will the invasive species treatments affect the acres over time?
  - Is the fencing wildlife friendly? If so, how will it improve nearby habitat conditions and not impede wildlife movement? For more information on wildlife friendly fencing, please find the suggested document for reference: <http://fwp.mt.gov/fwpDoc.html?id=34461>
  - Who is responsible for maintaining the fencing over time?
15. Explain any unusually high costs or large differences between per acre value of match and grant tracts. Refer to the [Eligibility Criteria & Processes](#) document for information on eligible and ineligible direct and indirect costs. Please explain if cost estimates differ from the fair market/reasonable value.
16. Itemize costs shown in the Financial Plan Table for each activity and identify the source (grant or the partner providing the match and non-match dollars). Use only the portions of the table that are applicable to each activity.
17. For each easement or fee acquisition activity included in the proposal, including old match, whether purchased or donated, complete the NAWCA Land Acquisition Disclosure section as part of the Work Plan. If the acquisition activity for that tract does not involve an easement or lease, do not include those portions of the Disclosure in the Work Plan. Attach to the proposal copies of all easements being used as old match. If available, provide draft language of easements to be acquired with grant or match funds during the project period. Grant funds will not be released for easement acquisition until the easement language has been reviewed and approved by DBHC.
18. Do not include any activity categories in the Financial Plan Justification that are not applicable to a tract. For example, if no portion of a tract is being acquired as part of the project, the Work Plan for that tract would not include an acquisition section. This also applies for non-match. If the non-match contribution does not directly affect the project area, then do not include it in the proposal.
19. Group indirect costs by tract (with the exception of any associated with “Other Grant/Match Activities”). Separate direct cost(s) in the financial plan in the indirect cost tables. Each direct cost line should appear exactly as it did in the direct cost table so that direct and indirect tables can be compared. Indirect costs are eligible as grant or match cost only if you have a previously approved Negotiated Indirect Cost Rate Agreement (NICRA) with the Federal government that establishes the activities on which your organization may charge an indirect rate. Attach your current organization’s approved NICRA, application for rate, or other proof that the indirect costs you have claimed are compliant with applicable Federal regulations. If more than one NICRA applies, attach all applicable agreements. If you do not provide the information in the Financial Plan Table and Work Plan and include copies of applicable



agreements, indirect costs will be considered ineligible. Each line entry shown should identify only one source (either grant amount or match amount). For more on indirect costs, go to [Eligibility Criteria & Processes](#), Eligible Grant Costs, and refer to the “What are direct and indirect costs?” answer. Unless your agreement specifically allows it, indirect costs calculated on the following are ineligible:

- a. Subgrants (subawards), major subcontracts, any in-kind match provided by a party other than the applicant;
  - b. Non-match, in-kind match from partners other than the partner with the NICRA, contributions from Federal agencies, and other items that “distort” the cost base;
  - c. The acquisition costs of interests in real property; and
  - d. The purchase price of equipment with an acquisition cost of \$5,000 or more per unit and a useful life of more than one year (consistent with recipient policy, lower limits may be established).
20. If some tracts are not yet identified, explain why and the method to be used to select tracts during proposal implementation.
  21. You may group large numbers of tracts with similar activities and per unit costs for the purposes of financial plan justification. Line item costs must be applicable to most tracts in order for those tracts to be grouped in the justification (For instance, 50 grassland easements are held by a single partner and planned enhancement on 40 of those easements will cost approximately the same per acre on all of those easements). Do not group acquisitions that will be held by different partners.
  22. There is no requirement to acquire a real property interest on a restoration, enhancement, or wetland creation project. However, recipients and subrecipients should have a project agreement with the landowner(s) that is consistent with the project design or designed lifespan of the constructed activity (e.g. restoration). A properly built project should seek to maximize the projects’ lifespan, while promoting efficient management and maintenance.
  23. Applicants must provide a statement specifying the management period for the designed lifespan or useful life of all construction (e.g. new water channel, levee, weir, pumps, other types of water control structure, etc.), as indicated in Technical Assessment Question 5. If the applicant proposes a management period or useful life of 25 years or less, with a value greater than \$100,000, applicants must reference the method used to determine the useful life.
  24. Applicants must identify and fully explain proposal components that were funded by a previous NAWCA grant (e.g. tracts and work accomplished).
  25. All dollar figures should add up to those in the Financial Plan Table.
  26. Note that all questions are in the future tense, but they also apply to past (match) work and costs.
  27. Include any grant/match cost items that cannot be captured under a specific tract (for instance, grant administration) in a section entitled “OTHER DIRECT GRANT/MATCH ACTIVITIES” at the end of the Work Plan. Describe and itemize those costs (including indirect costs) below that heading.
  28. Note that examples of how to answer the questions are given to enable and encourage you to provide the requested information in the most efficient manner possible. Please follow this format. Use tables, bulleted lists, or short statements instead of full sentences and paragraphs to provide the information. When tables are given as examples, answers should be presented in columns; however, it is not required that a table be developed. Include information and descriptions that only pertain to the proposed project area(s). Additional information, such as a very detailed land-use history of the area/landscape, will not necessarily benefit the proposal.

**WORK PLAN FORMAT**

**TRACT #- Name**

**OVERALL ACRES AFFECTED:**

**CENTRAL LOCATION: (in decimal degrees)**

**STATE/FEDERAL AGENCIES HOLDING INTERESTS: (List agencies and describe interest; if none type NA)**

**Acreage Summary of Grant/Match Activities on the Tract:**

**Acquisition                      Restoration                      Enhancement                      Establishment**

**Describe all grant/match activities occurring on the tract here:**

**Tract #-Name: Acquisition Financial Plan Justification - \$ \_\_\_\_\_ and \_\_\_\_\_ acres  
Grant - \$ \_\_\_\_\_ Match - \$ \_\_\_\_\_ Non-Match - \$ \_\_\_\_\_ Completion:**

**LAND ACQUISITION DISCLOSURE**

- Type of acquisition: (fee title, easement, lease, etc.)
- Holder of NAWCA conservation interest: (fee title, easement, lease, etc.)
- Grantor/Seller of conservation interest: (if Grantor/Seller is conservation organization, explain below how sale/transfer increases conservation value)
- Tenure of conservation interest: (10 years, perpetuity)
- All funding sources for acquisition: (include landowner if acquisition involved a donation or bargain sale)
- Are mineral rights severed or included? If severed, explain.
- Are water rights severed or included? If severed, explain.

**EASEMENTS:**

- What organization will monitor the easement?
- Should the easement holder cease to exist, to what organization will the easement revert?
- Has the easement holder adopted the “Land Trust Standards and Practices” developed by the Land Trust Alliance? If so, provide the date of that action. If not, describe the standards used to ensure adequate easement management and monitoring.
- Is there a stewardship endowment dedicated to maintaining and managing the easement? If so, what is the amount?
- Is subdivision of the easement property permitted? If so, with what limits?
- List all other allowed activities, allowed structures, or reserved rights not described above.

**LEASES:**

- What is the nature of the lease?
- What activities are allowed/prohibited?
- How does this contribute to long-term conservation of the property?

Item & Work	Units	\$/unit	Total \$	Schedule (month, year)	Funding Source (Grant or Partner name)
<b>LAND COSTS</b>					
Subtotal Land Costs					\$
<b>APPRAISALS and OTHER ACQUISITION COSTS</b>					

Subtotal Appraisals and Other Acquisition Costs		\$
<b>NON-CONTRACT PERSONNEL and TRAVEL</b>		
Subtotal Non-Contract Personnel and Travel		\$
<b>TOTAL ACQUISITION DIRECT COSTS</b>		\$

Tract #-Name: Restoration Financial Plan Justification - \$ \_\_\_\_\_ and \_\_\_\_\_ acres  
Grant - \$ \_\_\_\_\_ Match - \$ \_\_\_\_\_ Non-Match - \$ \_\_\_\_\_ Completion:

Item & Work	Units	\$/unit	Total \$	Schedule (month, year)	Funding Source (Grant or Partner name)
<b>CONTRACTS</b>					
Subtotal Contracts					\$
<b>MATERIALS and EQUIPMENT</b>					
Subtotal Materials and Equipment					\$
<b>NON-CONTRACT PERSONNEL and TRAVEL</b>					
Subtotal Non-Contract Personnel					\$
<b>TOTAL RESTORATION DIRECT COSTS</b>					\$

Tract #-Name: Enhancement Financial Plan Justification - \$ \_\_\_\_\_ and \_\_\_\_\_ acres  
Grant - \$ \_\_\_\_\_ Match - \$ \_\_\_\_\_ Non-Match - \$ \_\_\_\_\_ Completion:

Item & Work	Units	\$/unit	Total \$	Schedule (month, year)	Funding Source (Grant or Partner name)
<b>CONTRACTS</b>					
Subtotal Contracts					\$
<b>MATERIALS and EQUIPMENT</b>					
Subtotal Materials and Equipment					\$
<b>NON-CONTRACT PERSONNEL and TRAVEL</b>					
Subtotal Non-Contract Personnel					\$
<b>TOTAL ENHANCEMENT DIRECT COSTS</b>					\$

Tract #-Name: Establishment Financial Plan Justification - \$ \_\_\_\_\_ and \_\_\_\_\_ acres  
Grant - \$ \_\_\_\_\_ Match - \$ \_\_\_\_\_ Non-Match - \$ \_\_\_\_\_ Completion:

Item & Work	Units	\$/unit	Total \$	Schedule (month, year)	Funding Source (Grant or Partner name)
<b>CONTRACTS</b>					
Subtotal Contracts					\$
<b>MATERIALS and EQUIPMENT</b>					
Subtotal Materials and Equipment					\$
<b>NON-CONTRACT PERSONNEL and TRAVEL</b>					
Subtotal Non-Contract Personnel					\$
<b>TOTAL ESTABLISHMENT DIRECT COSTS</b>					\$

Tract #-Name: Indirect Costs Financial Plan Justification - \$ \_\_\_\_\_  
Grant \$ \_\_\_\_\_ Match \$ \_\_\_\_\_ Non-match \$ \_\_\_\_\_

Complete the table below and attach applicable agreements to the proposal. The indirect costs shown in this table should match the indirect costs shown in the Financial Plan Table. Identify the specific financial plan line items to which you are applying a NICRA in column two. Do not lump different types of base costs. Each line entry should identify only one source (either grant or match amount). For more on indirect costs, go to Eligibility Criteria & Processes, Eligible Grant Costs I, second paragraph.

Allowable Category from I.C Rate Agreement	Specific Financial Plan Line Items to Which Indirect Cost is Applied	Direct Cost Base Amount	Approved Rate (%)* / Agreement Date	Partner to which I.C. Rate Applies	I.C. Grant Amount	I.C. Match Amount	Total Indirect Cost
					\$	\$	\$
					\$	\$	\$
					\$	\$	\$

**OTHER DIRECT GRANT/MATCH ACTIVITIES FINANCIAL TABLE JUSTIFICATION – \$ \_\_\_\_\_**

Grant - \$ \_\_\_\_\_ Match - \$ \_\_\_\_\_ Non-Match - \$ \_\_\_\_\_

Describe other activities associated with implementing the grant, such as grant administration efforts and continuing matching contributions plan, here:

Item & Work	Units	\$/unit	Total \$	Schedule (month, year)	Funding Source (Grant or Partner name)
<b>TOTAL OTHER ACTIVITIES DIRECT COSTS</b>					\$

**OTHER ACTIVITIES INDIRECT COSTS FINANCIAL TABLE JUSTIFICATION \$ \_\_\_\_\_**  
**Grant \$ \_\_\_\_\_ Match \$ \_\_\_\_\_ Non-match \$ \_\_\_\_\_**

Complete the table below and attach applicable agreements to the proposal. The indirect costs shown in this table should match the indirect costs shown in the Financial Plan Table. Identify the specific financial plan line items to which you are applying a NICRA in column two. Do not lump base costs of different types. Each line entry should identify only one source (either grant or match amount).

<b>Allowable Category from I.C Rate Agreement</b>	<b>Specific Financial Plan Line Items to Which Indirect Cost is Applied</b>	<b>Direct Cost Base Amount</b>	<b>Approved Rate (%)*/ Agreement Date</b>	<b>Partner to which I.C. Rate Applies</b>	<b>I.C. Grant Amount</b>	<b>I.C. Match Amount</b>	<b>Total Indirect Cost</b>
					\$	\$	\$
					\$	\$	\$

## TECHNICAL ASSESSMENT QUESTIONS

The [North American Wetlands Conservation Act](#) specifies criteria to be used to evaluate proposals. The criteria are captured in the following seven Technical Assessment Questions.

**Question 1** - [How does the proposal contribute to the conservation of waterfowl habitat?](#)

**Question 2** - [How does the proposal contribute to the conservation of other wetland-associated migratory birds?](#)

**Question 3** - [How does the proposal location relate to the geographic priority wetlands described by the North American Waterfowl Management Plan, Partners in Flight, the U.S. Shorebird Conservation Plan, and/or the North American Waterbird Conservation Plan?](#)

**Question 4** - [How does the proposal relate to the national status and trends of wetlands types?](#)

**Question 5** - [How does the proposal contribute to long-term conservation of wetlands and associated habitats?](#)

**Question 6** - [How does the proposal contribute to the conservation of habitat for wetland associated federally listed or proposed endangered species; wetland associated state-listed species; and other wetland-associated fish and wildlife that are specifically involved with the proposal?](#)

**Question 7** - [How does the proposal satisfy the partnership purpose of the North American Wetlands Conservation Act?](#)

Technical Assessment Questions format follows. The questions should include:

1. All seven questions must be answered in no more than 14 pages total, including all text and tables (average of two pages per question). Margins must be 1 inch with Times New Roman size 11 font throughout (not including tables). To stay within the page limit, avoid adding links to lengthy documents, such as publications. These additional links will be considered in the 14 page limit length.
2. Answer each question separately. The questions, including species lists, are available in the [Word Proposal Outline](#).
3. Answers should cover benefits derived from completed grant - and match - funded work in the proposal that occurred within the past two years and will occur during the two-year Assistance Award period.
4. Do not include information/benefits/acres associated with non-match work or tracts except in Questions 7C and 7D.
5. Be as qualitative and as quantitative as possible.
6. Select the best methods to provide as much information as possible (such as giving species, abundance and seasonal use information in a table followed by a narrative), while adhering to format and proposal length guidelines.
7. Specifically explain linkages between the proposal tracts and conservation objectives (national and regional) of the following programs and plans: North American Waterfowl Management Plan (NAWMP), Partners in Flight (PIF), U.S. Shorebird Conservation Plan (USSCP), and North American Waterbird Conservation Plan (NAWCP).
8. Do not include benefits to a larger area, such as previous or future phases of the current proposal area.
9. Include all habitat types (not just wetlands).
10. Make sure acreage figures are consistent with those given elsewhere in the proposal.
11. Include only benefits from actions covered by the proposal. For example, if the proposal includes acquisition of sites that need restoration, but restoration is not part of the proposal, do not include restored habitat values in answers to the questions. Note that unless restoration is also included in the proposal, proposals for acquisition of degraded wetlands will be evaluated on the basis of the degraded condition and subsequent resource benefits.
12. If a new Matching Contributions Plan (MCP) is submitted with the proposal, include that acreage

and those benefits in your answers. However, if the MCP component is a phase of a previously approved MCP, do NOT include the associated acreage and benefits in your answers.

13. Reviewers assign points based on information in the proposal. In addition, reviewers evaluate the questions and the proposal in relation to the group of proposals under review. Scores are available approximately ten weeks after the proposal due dates.
14. Review the [U.S. Grant Administration Standards document](#) to see how Technical Assessment Question answers will be incorporated into the Assistance Award/Grant Agreement.

## TECHNICAL ASSESSMENT QUESTIONS FORMAT

---

### TECHNICAL ASSESSMENT QUESTION #1

**How does the proposal contribute to the conservation of waterfowl habitat?** ([See TAQ example 1](#))

Under A, B, and C below, list species that will be affected by the **grant and match work** (do NOT include non-match). In the narratives that follow, succinctly explain how the proposal will impact waterfowl species. The responses in the narrative section should address the **grant and match activities only**. If the proposal is a phase of an ongoing project, address only the current phase activity/acreage.

**A. High priority species:** Tule Greater White-fronted Goose, Dusky Canada Goose, Southern James Bay Canada Goose, Northern Pintail, Mottled Duck, American Black Duck, Mallard, Lesser Scaup, Greater Scaup.

**B. Other priority species:** Pacific Greater White-fronted Goose, Wrangel Island Snow Goose, Atlantic Brant, Pacific Brant, Wood Duck, Redhead, Canvasback, Ring-necked Duck, Common Eider, American Wigeon, Cackling Goose.

**C. Other waterfowl:**

**D. Narrative**

1. Describe how the proposal activities will aid in meeting objectives of waterfowl conservation plans.

2. For the species listed above, and using the table format below (see TAQ # 1 example), describe how many individuals/pairs will use the grant and match tracts after the proposal is completed and for what life cycle stage(s).

Species	Numbers affected and life cycle stage (Breeding, Migration, Wintering)	Tract Importance <i>(highlight importance of specific tracts when unique differences exist)</i>
High Priority		
Species (under each category, add additional rows for each applicable species)		

Other Priority		
Species (under each category, add additional rows for each applicable species)		
Other		
Species (choose up to 5 species in this category, add additional rows for each applicable species)		

3. Describe how the proposal will benefit species listed and/or improve habitat quality. If waterfowl abundance on grant and match tracts is expected to increase due to grant and match activities, please describe how this will occur.

4. If tracts are not yet identified, briefly explain what procedure will be used to ensure that high quality habitat is targeted.

### TECHNICAL ASSESSMENT QUESTION #2

**How does the proposal contribute to the conservation of other wetland-associated migratory birds?**

Using a table format (see [TAQ # 2 example](#)), succinctly describe the impact of the grant and match work on each selected species. Do NOT include benefits from non-match work, and address only non-waterfowl species.

- Which species or population will benefit and in which plan(s) is it a priority?
- How many individuals/pairs are expected to use the grant and match tracts and, if the grant or match tracts are being restored or enhanced, what is the expected increase in population numbers?
- How will the proposal activities positively affect the species and improve habitat quality?
- What is the importance of each tract (or logical grouping of tracts) in the proposal to the species or population, and for what life cycle stage (If tracts are not yet identified, explain what procedure will be used to ensure that the high quality habitat is targeted)?

**A. Priority bird species:**

**Identify up to ten priority bird species from the BCR lists ([Attachment A](#)) at the end of these instructions** that best demonstrate the benefits of the proposal activities to non-waterfowl species. Use habitat and population objectives from the bird conservation plans listed below (with contact information for the plan coordinators), and the species in the Bird Conservation Regions (reference the BCR lists at the end of these instructions; for more information on BCRs, see <http://nabci-us.org/resources/bird-conservation-regions-map/>)

Species/Plan	Numbers Affected	Benefits of Project	Tract Importance




**B. Other wetland-associated bird species:**

**Identify up to ten bird species not included in the priority species lists provided in Part A** above that help demonstrate the benefits of the project activities to non-waterfowl species.

Species/Plan	Numbers Affected	Benefits of Project	Tract Importance

---

**TECHNICAL ASSESSMENT QUESTION #3**

**How does the proposal location relate to the geographic wetland priorities described by the North American Waterfowl Management Plan, Partners In Flight, the U.S. Shorebird Conservation Plan, and/or the North American Waterbird Conservation Plan, along with regional priorities?**

**A. National wetland conservation priorities:**

Using the table format below, indicate how the proposed grant and match activities will address the national priority areas for wetland habitat conservation as outlined in the four major migratory bird conservation plans (North American Waterfowl Management Plan, Partners in Flight (songbirds), North American Waterbird Conservation Plan, and the U.S. Shorebird Conservation Plan).

Exact proposal location will be based on the GIS shapefile information you provide with the maps. **Do NOT include non-match activities.**

National Bird Plan Priority Areas	In	Partially In	Out
NAWMP			
PIF			
Wading Birds			
Shorebirds			

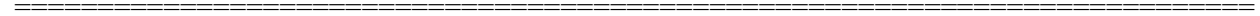
Below are additional tools for your use:

- National Migratory Bird Priority Plans and US Coastal Zone Interactive Mapper:  
<https://fws.maps.arcgis.com/apps/MapSeries/index.html?appid=632303c8dd8547e19b2b3198fac45078>

- North American Waterfowl Management Plan: <https://nawmp.org/>
- Partners in Flight (songbirds): <https://www.partnersinflight.org/plans/landbird-conservation-plan/>
- North American Waterbird Conservation Plan: <https://www.fws.gov/birds/management/bird-management-plans/waterbird-conservation-for-the-americas.php>
- U.S. Shorebird Conservation Plan: <https://www.shorebirdplan.org/> or <https://www.shorebirdplan.org/science/assessment-conservation-status-shorebirds/>

**B. Regional wetland conservation priorities:**

Briefly describe how the proposed grant and match activities will address the current regional geographic priorities based on Joint Venture and other partner’s science and planning information. It is prudent to work closely with [Joint Venture staff](#) to ensure that this proposal is based on the most current science and planning for all wetland associated migratory birds.



**TECHNICAL ASSESSMENT QUESTION #4**

**How does the proposal relate to the national status and trends of wetlands types?**

For more information about wetland functions, maps, the classification system/types/codes used below, and national and regional status and trends, visit the National Wetlands Inventory (NWI) website: <https://www.fws.gov/wetlands/>. Contact regional Joint Venture Coordinators for state or regional information. Not all wetland types are listed below, but they are given in the Cowardin report on the NWI website.

Complete the following table. In Section A, list the match and grant acreage by activity for each wetland type or group of types.

**DO NOT INCLUDE NON-ADD ACRES (NORMALLY INDICATED WITH PARENTHESES) OR NON-MATCH ACRES IN THIS TABLE.**

In Section B, list the acreage by type or group of types for each tract. Additionally, as indicated in the example TAQ #4, indicate the funding source for each tract (grant funds, new match funds, old match funds or a combination).

If your proposal is funded, you will be required to submit annual reports that compare actual accomplishments with the acreage figures and habitat types you give here. Additionally, you will be asked for actual accomplishments of your proposal in this format as part of your final report. This data will be used to determine the success of your proposal. See: [TAQ #4 Example](#)

**For both sections, only use those activity rows required with your proposal. Please ensure the acreage totals provided in TAQ #4 match those totals provided on the summary page.**

ACTIVITY AND TRACTS IN THE PROPOSAL	STATUS, TYPES, AND ACRES OF WETLANDS							UPLANDS	TOTAL
	Note: Types subsidiary to types listed below have the same status.								
	DECREASING		STABLE			INCREASING	NO TREND DATA		
PEM	PFO	E2Veg	E1	L	R	M2, PSS, PUB, E2US	PML, PRB, E2AB		
SECTION A									
Fee									

Easement										
Lease										
ACQUIRED TOTAL										
RESTORED										
ENHANCED										
ESTABLISHED										
TYPE TOTALS										
STATUS TOTALS										
GRAND TOTALS										
SECTION B										
Tract ID (funding)										
Tract ID (funding)										
Tract ID (funding)										
Tract ID (funding)										

**Funding Categories:** (G = Grant, OM = Old Match, NM = New Match, NO = Non-Match)

**E1** = Estuarine Subtidal, **E2US** = Estuarine Intertidal Unconsolidated Shore, **E2AB** = Estuarine Intertidal Aquatic Bed, **E2Veg** = Estuarine Intertidal Vegetated (E2EM, Intertidal Emergent Marsh, E2FO, Estuarine Forested, and E2SS, Estuarine Intertidal Scrub-Shrub), **L** = Lacustrine, **M2** = Marine Intertidal, **PEM** = Palustrine Emergent, **PFO** = Palustrine Forested, **PML** = Palustrine Moss-Lichen, **PRB** = Palustrine Rock Bottom, **PSS** = Palustrine Scrub-Shrub, **PUB** = Palustrine Unconsolidated Bottom (PUB, Palustrine Unconsolidated Bottom, PAB, Palustrine Aquatic Bed, and PUS, Palustrine Unconsolidated Shore), **R** = Riverine. Upland category may include restored cropland.

Provide a brief narrative to describe upland habitats (e.g., cropland, grassland, forest) and the relationship to wetlands and migratory bird conservation (i.e., reason for including in proposal).

---

**TECHNICAL ASSESSMENT QUESTION #5**

**How does the proposal contribute to long-term conservation of wetlands and associated uplands?**

Complete the following table. In Section A, list the match and grant acreage by activity for each tenure category.

In Section B, list the acreage by tenure for each tract. Additionally, as indicated in the example TAQ #5, indicate the funding source for each tract (grant funds, new match funds, old match funds or a combination).

**Restoration and enhancement activities should not be listed under the perpetuity tenure category without exceptional and appropriate justification, relative to tenure of agreements. The expectation of maintenance does not make a restoration perpetual.**

If your proposal is funded, you will be required to submit annual reports that compare actual accomplishments with the acreage figures and habitat types you give here. Additionally, you will be asked for actual accomplishments of your proposal in this format as part of your final report. This data will be used to determine the success of your project. See: [TAQ #5 Example](#)

**For both sections, only use those activity rows required with your proposal. Please ensure the acreage totals provided in TAQ #5 match those totals provided on the summary page. Also include any non-add acres with parentheses in your proposal summary and TAQ #5 table. DO NOT INCLUDE NON-MATCH ACRES.**

ACTIVITY	ACRES BY LONGEVITY OF BENEFITS				TOTAL ACRES
	* Includes water control structures made of material other than wood. ** Includes wood water control structures and pumps.				
	PERPETUITY	*26-99	**10-25	< 10	
<b>SECTION A</b>					
Fee					
Easement					
Lease					
TOTAL ACQUIRED					
RESTORED					
ENHANCED					
ESTABLISHED					
TOTAL					
<b>SECTION B</b>					
Tract ID (funding)					
Tract ID (funding)					
Tract ID (funding)					
Tract ID (funding)					

**Funding Categories:** (G = Grant, OM = Old Match, NM = New Match, NO = Non-Match)

Provide a brief narrative describing the significance of the proposal to:

- Long-term conservation and how the project area and tracts might be affected by changing environmental conditions within the next 30-50 years,
- And also how the proposed activities address, in an adaptive manner, any changes caused by changing environmental conditions change concerns.

Questions that might be discussed include:

- What national, state, or regional-level climate vulnerability/risk assessments have been conducted for the project area and what did they determine?
- Is the project area known from assessments or research to exhibit climate-resilient features or attributes?
- Are populations and the conservation status of priority species from Technical Questions #1 and #2 projected to change over the next 30-50 years?
- What climate-adaptive features or attributes do the project activities include?
- How are project activities compatible with or contribute to the U.S. Fish and Wildlife Services' Strategic Plan for Responding to changing environmental conditions (<https://www.fws.gov/home/climatechange/>), the National Fish, Wildlife & Plants Climate Adaptation Strategy (<https://www.wildlifeadaptationstrategy.gov/>), or similar documents?

---



---

**TECHNICAL ASSESSMENT QUESTION #6**

**How does the proposal contribute to the conservation of habitat for wetland associated, Federally listed or proposed endangered species; wetland associated state-listed species; and other wetland-associated fish and wildlife that are specifically involved with the proposal?**

For more information on Federally listed species and critical habitat, visit the U.S. Fish and Wildlife Service's Endangered Species Program website: <https://www.fws.gov/angered/>. Click on Species Information for species-specific information. Visit the Service's Endangered Species Program contacts page <https://www.fws.gov/angered/regions/index.html> for more information in a regional or state context. Under A and B below, list species that will be affected by the grant and match work (**do NOT**

**include non-match tracts)** and succinctly provide the additional requested information to explain how the proposal will affect the species.

**A. Federally Threatened, Endangered, or Proposed candidate species:**

How many individuals/pairs will use the proposal area and for what life cycle stage and whether this is an improvement in population numbers over the current situation:

How proposal will improve habitat quality (describe the before - and after - proposal environment):

Whether proposed actions and proposal area are identified in a recovery plan or other species plan:

Whether the completed proposal will contribute towards relieving the need for any special protective status for the species:

Importance of each tract or logical groupings of tracts in the proposal to the species (if tracts are not yet identified, explain what procedure will be used to ensure that high quality habitat is targeted):

Additional information:

**B. Wetland-dependent species of greatest conservation need (SGCN) from the appropriate State Wildlife Action Plan (SWAP):**

List a MAXIMUM OF 10 Species: Do NOT list species listed in A, TAQ #1, or TAQ #2.

*The SWAP for each State can be found here: <https://www1.usgs.gov/csas/swap/index.html>*

How many individuals/pairs will use the proposal area and for what life cycle stage and whether this is an improvement in population numbers over the current situation:

How does the species rely on wetland habitats and how does the proposal improve key habitat and community types essential to the conservation of those SGCN (describe the before- and after-proposal environment):

Do the proposed activities and/or proposal area identify factors that may assist in the restoration and improved conservation of the SGCN:

Whether the completed proposal will contribute toward reducing or eliminating the Conservation Need status for the species:

Importance of each tract or logical groupings of tracts in the proposal to the species (if tracts are not yet identified, explain what procedure will be used to ensure that high quality habitat is targeted):

Additional information:

---

---

**TECHNICAL ASSESSMENT QUESTION #7**

**How does the proposal satisfy the partnership purpose of the North American Wetlands Conservation Act?**

**A. Ratio of the Non-Federal Match to the Grant Request:**

State the ratio of the non-Federal match to the grant request (e.g., the ratio of a non-Federal match of \$1,500,000 to a \$1,000,000 grant request = 1.5:1). A 2:1 match or higher gains maximum points. To

receive credit, you must submit signed Partner Contribution Statements from matching partners with the proposal.

**B. 10% Matching Partners:**

List the matching partners who contribute at least 10% of the grant request (e.g., for a \$1,000,000 grant request, list the matching partners who contribute at least \$100,000). To receive credit, you must submit signed Partner Contribution Statements from matching partners with the proposal. **It is not acceptable to lump multiple landowners to achieve the 10% match.**

**C. Partner Categories (includes non-match):**

Show the partner diversity by listing each partner (irrespective of contribution amount) under one of the following categories. To receive credit, signed Partner Contribution Statements from matching and non-matching partners must be submitted with the proposal.

**State agencies:**

**Non-governmental conservation organizations:** (e.g., local wildlife club, Ducks Unlimited, Inc., The Nature Conservancy)

**Local governments, counties or municipalities:** (e.g., Conservation District)

**Private landowners:**

**Profit-making corporations:** (e.g., Exxon)

**Native American governments or associations:**

**Federal agencies:**

**Other partner groups:**

For NAWCA purposes, a partner is defined as a group, agency, organization, or individual which participates in a specific NAWCA project as a match provider.

Non-match partners are eligible for inclusion in this section if the non-match funds are pooled with grant or match funds to accomplish acreage goals.

A partner letter is required for each partner, including non-match partners.

**D. Important Partnership Aspects (new grant recipient, significant new partners, unique partners, large numbers of partners under any category in C above, non-financial contributions):**

Briefly state any particularly significant or unique benefits that are provided by the proposal partnerships.

**E. Public Access:**

Open to public access means that any member of the public can legally enter NAWCA proposal tract/tracts subject to only modest restrictions (e.g., daylight hours only, small entry fee, etc.). Under this definition, proposal tracts may be closed during certain times of the year or certain types of activities may be limited to facilitate habitat and wildlife management (manage for hunting access, migratory bird sanctuary or other environmental impacts, etc.). In this section, please explain the nature of the public access per tract. How much acreage will be open to public access? Explain what public access activities will occur on what acres. How much acreage will be closed to public access and why?

**Public Access Scoring:** This definition will be applied to all types of proposal activity including fee acquisitions, easements, restorations, enhancements, and wetland establishments, regardless of whether the activity is funded with grant or match funds (including old match).

2, 1, or 0 points will be awarded as follows:

- 2 points – open to public hunting

- 1 point – open to other public access
- 0 points – closed to public access

## SCORING TABLE

CATEGORIES OF QUESTIONS	Points = 100
#1. WATERFOWL A. High priority species B. Other priority species C. Other waterfowl	MAXIMUM = 15 0-7 0-5 0-3
#2. WETLAND-ASSOCIATED MIGRATORY BIRDS A. Priority bird species B. Other wetland-associated bird species	MAXIMUM = 15
#3. NORTH AMERICAN GEOGRAPHIC PRIORITY WETLANDS AS RECOGNIZED BY MAJOR MIGRATORY BIRD CONSERVATION PLANS A. National geographic priority wetland areas B. Regionally important wetland areas	MAXIMUM = 15 0-9 0-6
#4. WETLANDS STATUS AND TRENDS A. Decreasing wetlands types B. Stable wetlands types C. Increasing wetlands types D. No trend data types E. Uplands	MAXIMUM = 10 0-10 0-4 0-1 0-1 0-8
#5. LONG-TERM CONSERVATION & CHANGING ENVIRONMENTAL CONDITIONS A. Benefits in perpetuity B. Benefits for 26-99 years C. Benefits for 10-25 years D. Benefits for <10 years E. Significance to long-term conservation <u>and</u> changing environmental conditions	MAXIMUM = 15 0-12 0-8 0-6 0-4 0-3
#6. ENDANGERED SPECIES AND OTHER WETLAND-DEPENDENT FISH AND WILDLIFE A. Federal endangered, threatened or proposed species = 1, 2, >2 species B. State Species of Greatest Conservation Need = <u>0-10</u> species	MAXIMUM = 10 0-3, 0-4, 0-5 0-5
#7. PARTNERSHIPS A. Ratio of non-Federal match to grant request = $\leq 1:1$ ; $>1:1 < 1.5:1$ ; $\geq 1.5:1 < 2:1$ ; $\geq 2:1$ B. Matching partners contributing 10% of the grant request = 0-1, 2, 3, > 3 C. Partner categories = 1, 2, 3, > 3 D. Important partnership aspects E. Public Access	MAXIMUM = 20 0, 1, 3, 6 0, 1, 2, 3 0, 2, 3, 4 0-5 0-2



---



---

## TRACT TABLE

Ensure that each tract involved in the proposal is consistently identified in each section of the proposal (Summary, narratives, tables, Technical Assessment Questions, etc.). For any tract(s) involved in the proposal that is/are not yet identified, complete the Tract Table as much as possible, explain why the tract(s) is/are not yet identified and describe the methods to be used to select the tract(s).

Please provide the following information for each tract:

- Tract identification (same as on the Financial Plan Table, Technical Questions 4 & 5, and on the maps submitted with the proposal). If a tract has multiple activities (e.g., Fee Acquired and Restored), then create a separate line for each activity.
- Activity Type: Fee Acquired, Fee Donated, Easement Acquired, Easement Donated, Lease Acquired, Lease Donated, Restored, Enhanced, Wetlands Established.
- Wetland acres, upland acres, and riparian miles within each tract. Any riparian acres should already be accounted for in the Wetland/Upland Acres category (ies). Be sure to also include any non-add acres in parentheses, if applicable.
- Public Access: Include the total amount of acres that will be open to public access.
- Funding category: List Grant, old match, new match, and/or non-match. Non-match should be pooled with Grant and/or match funds.
- Funding source: List NAWCA and/or abbreviated partner names.
- The county and state where the tract is located.
- A central tract location latitude/longitude point in decimal degrees (Example: 38.752906, -77.1084432).
- Title holder (name) after the proposal is completed. For easements, give both the fee and easement holders.
- Matching Contributions Plan information: Make sure tracts and acres that are part of a new Matching Contributions Plan are shown here as in the Proposal Summary; i.e., funding is apportioned according to the Matching Contributions Plan, but all acres are counted in the first proposal.
- Total acres for wetland and upland habitats, as well as the total of acres open public access.

**The tract location latitude/longitude information is mandatory.**

**Landowner and tract names must be consistent throughout the proposal.**

Below the table, complete the Final Titleholder Summary. Acreage total should match the Summary Page data.

**NOTE:** Should your proposal be awarded a grant, you will be asked for actual accomplishments of your proposal in this format as part of your final report. This data will be used in Government Performance and Results Act reporting.

### Tract Table Format

Tract ID	Activity Type	Wetland Acres	Upland Acres	Riparian Miles	Public Access	Funding Category	Funding Source	County and State	Central Tract Location in Decimal Degrees	Final Title Holder
Tract					# Open Acres					

Tract					# Open Acres					
Tract					# Open Acres					
<b>Total Acres</b>		<b>Total # Wetland Acres</b>	<b>Total # Upland Acres</b>		<b>Total # Open Acres</b>					

**Funding Categories:** (G = Grant, OM = Old Match, NM = New Match, NO = Non-Match)

**FINAL TITLEHOLDER SUMMARY:**

**Definitions from USFWS Strategic Plan 2000 – 2005:**

**Riparian:** A landscape position – lands contiguous to perennial or intermittent streams, channels and rivers. Riparian areas may include upland, wetland, and riparian plant communities. Riparian plant communities are affected by surface or subsurface hydrology of the adjacent water source. Riparian plant communities have one or both of the following characteristics: 1) distinctively different vegetative species than adjacent areas, and 2) species similar to adjacent areas but exhibiting more vigorous or robust growth forms.

**Upland:** Land or an area of land lying above the level where water flows or where flooding occurs. May include restored cropland.

**Wetland:** From Cowardin et al. 1979, Classification of Wetlands and Deepwater Habitats of the United States. -- “Wetlands are lands transitional between terrestrial and aquatic systems where the water table is usually at or near the surface or the land is covered by shallow water. For purposes of this classification wetlands must have one or more of the following three attributes: (1) at least periodically the land supports predominantly hydrophytes; (2) the substrate is predominantly undrained hydric soils; and (3) the substrate is nonsoil and is saturated with water or covered by shallow water at some time during the growing season of each year.” By definitions wetlands include areas meeting specific criteria included in the 1987 Corps of Engineers Wetlands Delineation Manual, as well as in the USDA-NRCS’s National Food Security Act Manual.

**PARTNER CONTRIBUTION STATEMENTS**

- Each matching partner (including the grantee and private landowners, if providing funds and/or donating title to property) and non-matching partner (including Federal partners) listed in the proposal must complete a Statement.
- Each statement must be submitted with the proposal before the deadline date.
- The statements must be signed and dated for the contribution to be considered documented.
- It is preferred that each partner listed in the proposal complete a statement. If this cannot be done, another party may vouch for the matching partner, but no credit will be gained in the Partnership Technical Assessment Question 7 under the categories of "10% partners" and "partner categories". These situations will be handled on a case-by-case basis.
- If you want to show support from non-funding sources, do not send statements, but instead include a statement in the proposal such as "To illustrate the overwhelming support for this proposal, we have 37 letters on file from landowners and State and Federal representatives."
- The grantee’s statement should not be a cover or transmittal sheet for the proposal.
- If the North American Wetlands Conservation Council has approved a prior Matching Contributions Plan that involves match for the current proposal, include a copy of the original approval letter or email in this section. Matching contribution plans can only be submitted for excess match associated

with the acquisition of a single tract.

- Remember that the contribution amount on the statement must be the same as the amount shown in the proposal for the partner. If the amount differs in any section of the proposal or on the statement, the lesser of the two will be considered the partner's contribution. If there are many such inconsistencies in the proposal, it will be returned as ineligible.
- The partner contribution letter template has been updated to include a question that asks if and how the project will benefit tribal hunting and fishing treaty rights. This change came in response to the House of Representatives Committee on Appropriations Report submitted to the Department of the Interior, Environment, and Related Agencies Appropriations Bill for Fiscal Year 2018 (<https://appropriations.house.gov/uploadedfiles/23918.pdf>), under the section North American Wetlands Conservation Fund (page 22).

**PARTNER CONTRIBUTION LETTER TEMPLATE**

**NORTH AMERICAN WETLANDS CONSERVATION ACT PROPOSAL  
PARTNER CONTRIBUTION STATEMENT**

**NOTE: The grantee organization that submits the original proposal and accompanying MCP is responsible for maintaining the MCP records throughout the life of the plan. That grantee organization must provide a partner letter with each proposal using the MCP match acknowledging the amount of MCP funds used and the remaining MCP balance. If you also have non-match partners associated with your project it is beneficial if a partner letter is submitted for accountability.**

**What is the title of the proposal that you are contributing to?**

**What is the name of your organization (private landowners/individuals indicate “Private”)?**

**When will you make the contribution?**

**What is the value of your contribution and how did you determine the value? Does the contribution have a non-Federal origin? If this is based on a fund-raising event or other future action, if that future action fails, will you still provide the contribution amount?**

**What long-term migratory bird and wetlands conservation work will the contribution cover?**

**Does the proposal correctly describe your contribution, especially the amount?**

**If applicable to the proposal, is your organization competent to hold title to, and manage, land acquired with grant funds and are you willing to apply a Notice of Grant Agreement or other recordable document to the property?**

**Please confirm that your contribution has not been used to meet any other federal programs match or cost share requirements.**

**Will the project benefit tribal hunting and fishing treaty rights and if so, how?**

**Do you have any additional comments?**

**Signature:**

**Name (printed), Title, and Affiliation:**

**Date Signed:**

---

---

## MATCHING CONTRIBUTIONS PLAN (MATCH PLAN OR MCP) OPTIONAL

You may submit a Matching Contributions Plan with a proposal when you have matching funds in addition to what you will use for this proposal and need to maintain the eligibility of this match beyond two years for future proposals. The Council will consider waiving the two-year eligibility rule based on the circumstances by which the additional match was obtained, your need, and how you will use the match. Other sections of these instructions contain information on how to apply the Match Plan dollars, acres, and natural resource benefits in future proposals. Matching contribution plans can only be submitted for excess match associated with the acquisition of a single tract.

- **What is the Match Plan Amount and Purpose?** State the amount of match that must remain eligible for future proposals (use this same amount in the lower right-hand cell of the example below) and briefly describe the conservation goals to be achieved by future proposals supported by this match.
- **What is the Match Plan Intent?** Describe how/why you obtained the additional match, including the sources (partners) and the relationship of these partners to the proposal.
- **What is the Match Plan Need?** Describe why you need this match to complete future phases of the proposal and why obtaining new match for these proposals is not feasible.
- **Is there a Match Plan Chart?** Provide a chart showing Match Plan partner contributions used in the current proposal and future proposals. (See the example.)
- **Where is the location of the MCP acquisition tract?** Describe in detail the location of the tract (city, county, state, and latitude/longitude).

See: [Optional Matching Contributions Plan Example](#)

---

---

## PROGRAMMATIC PROJECT REQUEST OPTIONAL

If a new grant award would fund ongoing work being done with a previously awarded grant(s), the applicant may request that the subsequent grant award be a continuation and expansion of the same grant agreement if the original (first) grant agreement is not more than 24 months old at the time of the proposal application deadline. An applicant requesting that a proposal be treated as a programmatic project, and incorporated into an existing grant agreement, must justify the request in the proposal. Relevant factors in the request include:

- The existing grant agreement number and title (must be no more than 24 months old).
- The number of proposals previously added to the existing grant agreement (a maximum of 3 awards can be combined into a programmatic project).
- The relationship between the existing and proposed project boundaries.
- How the new proposal is part of a long-term strategic planning and programmatic effort.
- How the additional project is related to warrant consideration as a continuation of the existing grant agreement.
- The evidenced progress that has been made on the original grant agreement.
- How the grantee organization and Project Officer have performed on prior and current NAWCA grants.
- The planned termination date of the revised grant agreement.

## STANDARD FORM-424 AND SF-424D INSTRUCTIONS

The SF-424D Assurances for Construction Projects, is required for all NAWCA projects (any project that involves acquisition, restoration, enhancement, or establishment is considered a construction project).

All applicants are required to submit a completed Application for Federal Assistance (SF-424) and Assurances Construction Programs (SF-424D) form along with their proposal application. If your organization is registered in GrantSolution, SF-424s can be completed within your application under a directed announcement. If your organization must apply within Grants.gov, Grants.gov has developed Workspace for all applicants to apply for grants. You can access and submit the forms through [www.grants.gov](http://www.grants.gov)

To apply to a GrantSolutions' directed announcement:

<https://www.grantsolutions.gov/support/public/pdf/QuickSheetDirectedAnnouncement.pdf>

Note: The address on the SF-424 #8 d must be the same as the address associated with the DUNS number.

CELL NUMBER and TITLE	INSTRUCTIONS
<b>1. Type of Submission</b>	See instructions on back of SF 424
<b>2. Type of Application</b>	See instructions on back of SF 424
<b>3. Date Received</b>	Leave blank
<b>4. Applicant Identifier</b>	Leave blank
<b>5. a. Employer Identification</b>	See instructions on back of SF 424
<b>5. b. Federal Award Identifier</b>	See instructions on back of SF 424
<b>6. Date Received by State</b>	Leave blank
<b>7. State Application Identifier</b>	Leave blank
<b>8. (a-e) – Applicant Information</b>	See instructions on back of SF 424, “c”. *DUNS # required
<b>9. Type of Applicant</b>	See instructions on back of SF 424
<b>10. Name of Federal Agency</b>	Enter "U.S. Fish and Wildlife Service"
<b>11. Catalog of Federal Domestic Assistance Number and Title</b>	Enter "15.623" and “NAWCA U.S. STANDARD GRANTS”
<b>12. Funding Opportunity Number/Title:</b>	Enter “15.623” and “NAWCA U.S. STANDARD GRANTS”
<b>13. Competition Identification Number/Title:</b>	Leave blank
<b>14. Areas Affected by Project</b>	Enter only information for "Counties and States" that the tract(s) are included in; if tract(s) are unknown then list all of the project area
<b>15. Descriptive Title of Applicant’s Project</b>	Enter title used in Part 1 of proposal
<b>16. Congressional Districts of Applicant/Project</b>	Enter only information for "b. Project"
<b>17. Proposed Project Start and End Dates</b>	Leave blank
<b>18. Estimated Funding</b>	Do not include non-match \$. In “a”, include only NAWCA grant \$. In “b-e”, include only matching partner \$. Leave "f" blank
<b>19. Is Application Subject to Review by State EO 12372 Process?</b>	Only applicable to states
<b>20. Is Applicant Delinquent on any Federal Debt?</b>	See instructions on back of SF 424
<b>21. Authorized Representative</b>	See instructions on back of SF 424

---

---

## MAPS

Include maps as the last attachment on your proposal narrative. Provide at least two maps: one that conveys an understanding of all conservation activities in the proposal area including federal, state, non-match and NGO conservation lands, and one that includes location of all grant and match tracts in the proposal as well as an overall proposal project area.

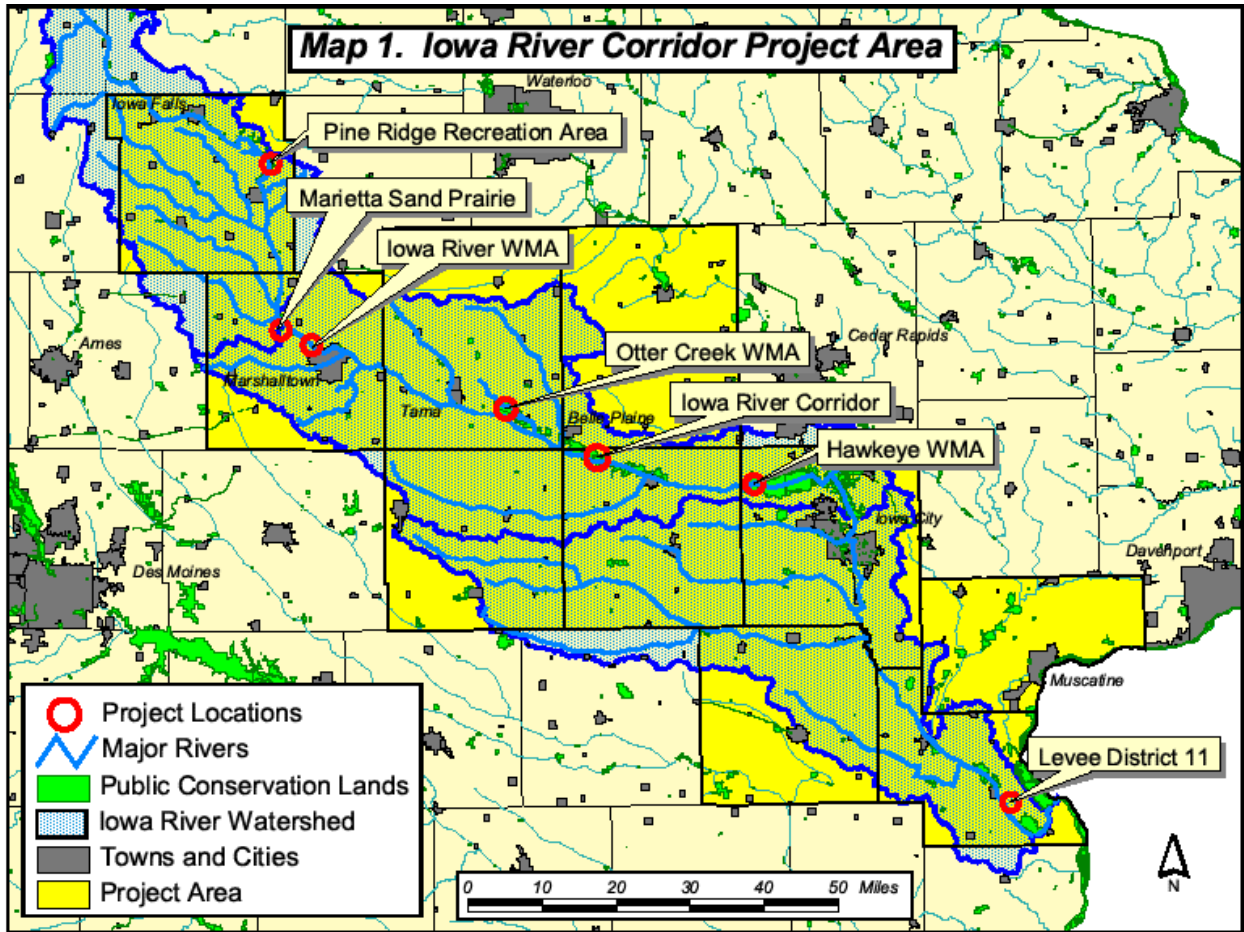
The project area is a larger, defined area that encompasses the project's tract(s). A project area can best be described as follows:

- area that is part of a wetlands conservation plan;
- areas in the same wetlands system (e.g., watershed or river basin);
- areas that are managed to meet the same wetlands objectives;
- areas that are in close proximity;
- areas that provide direct benefits to each other; or
- areas that are part of a pooled project with non-match funds, as long as the NAWCA portion is distinctly identified as an undivided interest of the total acres involved.

Three examples of maps are provided below. These maps represent large-, intermediate-, and small-scale proposal areas. Maps are critical sections of the proposal. Well-constructed and informative maps can have a significant impact on understanding the scope and significance your proposal has to wetland conservation. This understanding will be reflected in the scoring process. Your maps should include:

- Proposal title
- Location of the ENTIRE proposal area (all grant, match, and project area) within State(s) and counties
- Identification and location of all fee-title, easement and lease tracts (or acquisition priority areas, if tracts have not been identified)
- Identification and location of all restoration and enhancement tracts, major water control structures and other major restoration/enhancement features
- A legend
- Map scale
- A north directional arrow
- Location of natural features (rivers, lakes) to show how the proposal fits into the natural landscape
- Location of previous grant and future proposal sites
- If applicable and possible, where the proposal is in relation to a larger wetlands conservation project (show larger project boundary and boundary of current proposal).

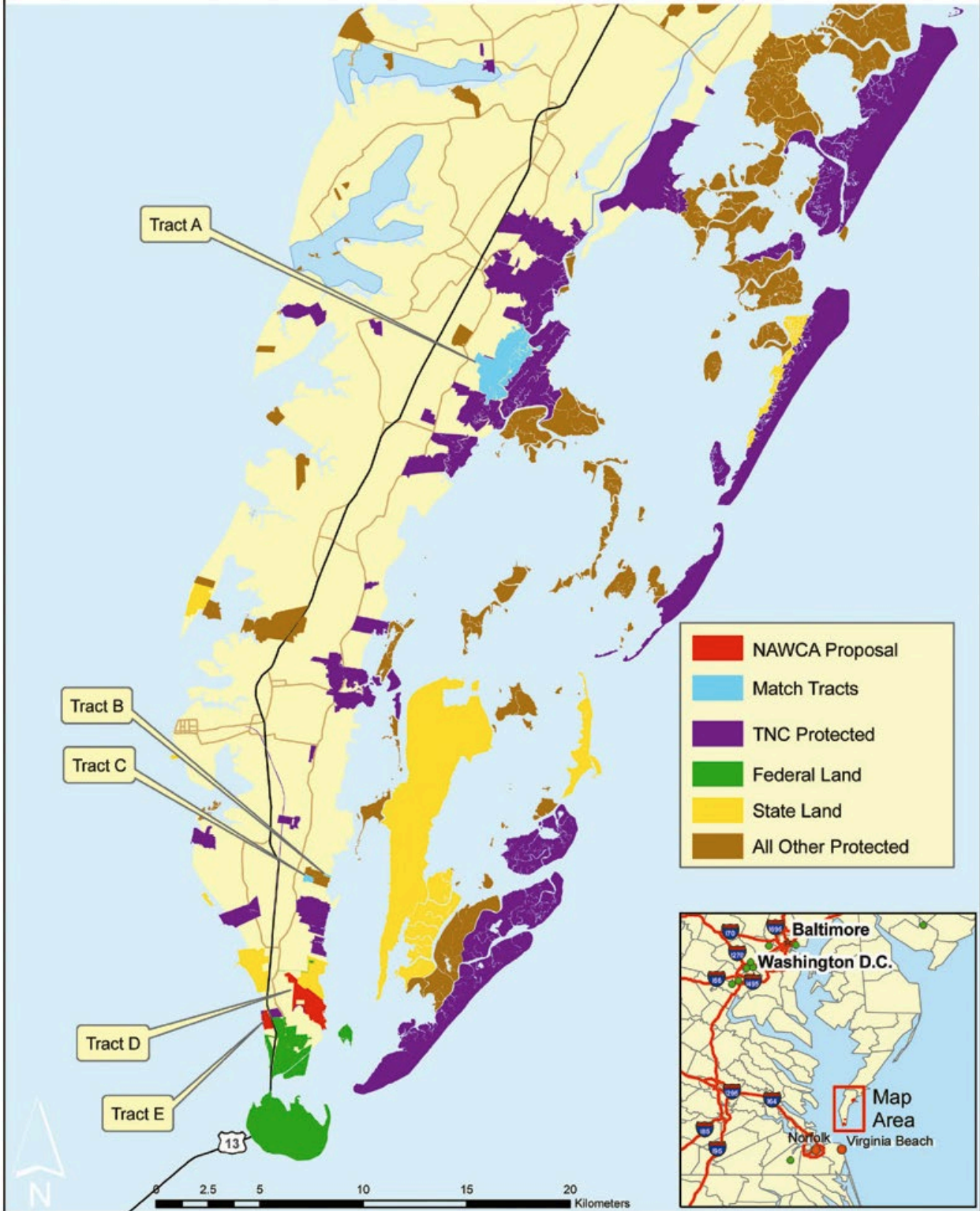
# MAP EXAMPLES



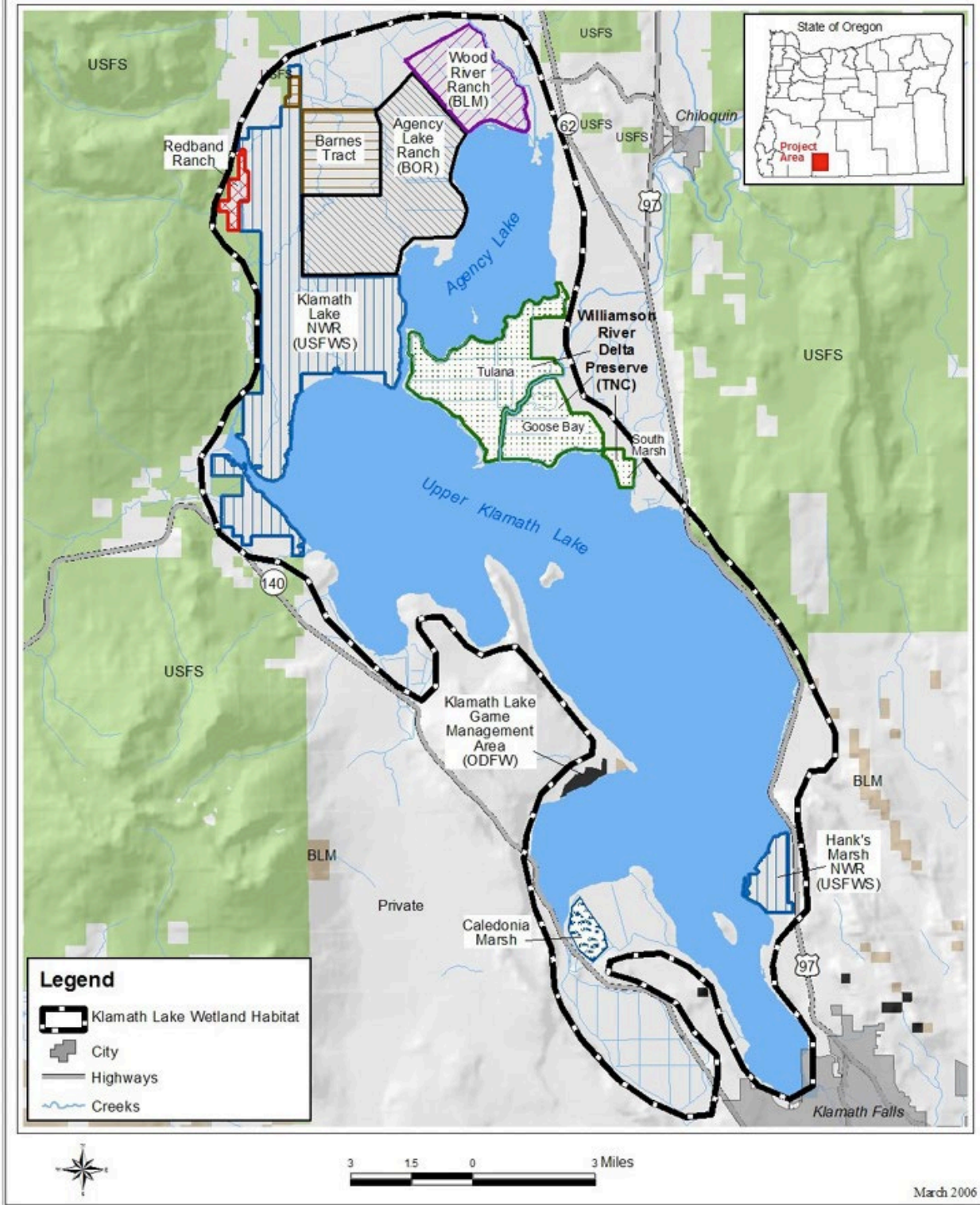


# Wetland Cooperative Conservation Initiative

## Land Holdings



# KLAMATH LAKE WETLAND HABITAT



---

---

## GIS SHAPEFILE INSTRUCTIONS

Please provide a single GIS shapefile that was used to create the maps. The shapefile submitted should use a GCS WGS 1984 projection and the attribute table should contain a name for each polygon which corresponds to a tract listed in the proposal tract table.

- Only one GIS shapefile should be submitted for each proposal. The shapefile must be a polygon(s), not points or lines.
- Submit the shapefile as a .zip file. The submitted shapefile should have these file extensions, at minimum: **.shp, .dbf, .shx, .prj, .xml**. Any other extensions that are submitted are extra, but do not delete these.
- The shapefile may contain multiple polygons representing the location of each of the tracts involved in the project - **but must, *at minimum*, contain a polygon of the overall project area.**

The attribute table should **very closely resemble the tract table**, with a few exceptions. The shapefile should contain the Project Name, Total Acreage (you do not need to break out the wetland/upland acres), and Project Area entry. Tract Name is optional if you have instead been using Tract ID throughout the proposal. The other fields are mandatory and should follow these field property *suggestions*:

- FID – *automatically assigned*
- Shape – Polygon. *If your shapefile is in Polygon ZM format, please convert it to a standard Polygon.*
- PROJ\_NAME – Text; Length: 100
- TRACT\_ID – Text; Length: 25. *Tract ID should match the ID used throughout the proposal and Tract Table. You may leave this field entry blank for the Project Area.*
- ACTTYPE – Text; Length: 50. *List the abbreviated activity per tract using this key: FA = Fee Acquired, FD = Fee Donated, EA = Easement Acquired, ED = Easement Donated, LA = Lease Acquired, LD = Lease Donated, RS = Restored, EN = Enhanced, WE = Wetland Established. You may leave this field entry blank for the Project Area.*
- TRACT\_NAME – Optional. Text; Length: 50. *You may leave this field entry blank for the Project Area.*
- ACREAGE – Double; Default Precision and Scale. *Total acreage of wetland and upland components. You may leave this field entry blank for the Project Area.*
- FUNDING – Text; Length: 50. *Funding category (Grant, Old Match, New Match, and Non-Match). You may leave this field entry blank for the Project Area.*
- COUNTY – Text; Length: 50. *You may leave this field entry blank for the Project Area.*
- STATE – Text; Length: 10. *Two letter state abbreviation. You may leave this field entry blank for the Project Area.*
- LATITUDE – Double; Default Precision and Scale
- LONGITUDE – Double; Default Precision and Scale
- HOLDER – Text; Length: 50 *Final Title Holder. You may leave this field entry blank for the Project Area.*

Any additional attribute fields submitted will be considered extra information.

For tracts that will be determined at a time after the project is funded, please still list the tract in the attribute field. Assign the tract with the same geographical boundary as the Project Area.

If you are undertaking a project where an exact activity location cannot be determined at the time of proposal (i.e. easement acquisition in the prairie potholes), then include a single polygon which encompasses the larger project area where the activities are targeted to occur.

---

---

## PROPOSAL EASEMENT, LEASES, AND INDIRECT COST RATE AGREEMENT

Have you included the following?

- **Copies of easements and leases** in place when the proposal was submitted and models/templates for easements and leases to be acquired through the proposal.
- **Negotiated Indirect Cost Rate Agreement (NICRA):** If you are requesting grant funds for indirect costs or using indirect costs as match, attach a copy of **your current approved negotiated indirect cost rate agreement** (and any other former approved negotiated indirect cost rate agreement used to determine match costs in this proposal) signed by your agency.

---

---

## PROPOSAL EXAMPLES BY SECTION

1. [Summary Page](#)
2. [Financial Plan Table](#)
3. [Work Plan](#)
4. [TAQ #1](#)
5. [TAQ #2](#)
6. [TAQ#3](#)
7. [TAQ #4](#)
8. [TAQ #5](#)
9. [Tract Table](#)
10. [Optional Matching Contribution Plan](#)

## OTHER ATTACHMENTS

- A. [TAQ #2 Priority NAWCA Species List](#)
- B. [NAWCA Priority Bird Crosswalk List](#)
- C. [NAWCA Priority Gulf Spill Funding Zones](#)

**PROPOSAL SUMMARY EXAMPLE**

**NOTE: This example is adapted from a previous submission.**

**NORTH AMERICAN WETLANDS CONSERVATION ACT PROPOSAL SUMMARY  
Des Moines River Valley Wetlands, Iowa**

COUNTY (IES), STATE(S), CONGRESSIONAL DISTRICT(S): Davis, Des Moines, Henry, Jasper, Jefferson, Keokuk, Lee, Lucas, Mahaska, Marion, Monroe, Polk, Van Buren, Wapello, Warren, and Washington. Iowa Congressional Districts 2 and 3.

GRANT AMOUNT \$1,000,000  
Allocation: Iowa Department of Natural Resources \$1,000,000

MATCHING PARTNERS \$3,549,100  
Grantee: Iowa Department of Natural Resources \$2,015,000  
Iowa Natural Heritage Foundation \$ 620,650  
Lee County Conservation Board \$ 789,650  
Hardwood Timberland Unlimited \$ 73,800  
Pheasants Forever, Warren County Chapter \$ 20,000  
Pheasants Forever, Iowa Capital Chapter \$ 10,000  
Pheasants Forever, Lee County Chapter \$ 10,000  
Three Rivers Conservation Foundation \$ 10,000

If there is a MCP, under Matching Partners indicate what partner is contributing to the matching contribution plan.

If Iowa Natural Heritage Foundation is providing MCP, list MCP at the end of their title. If a partner is contributing MCP as well as additional match then include the partner name twice.

Iowa Natural Heritage Foundation MCP \$2,500,000  
Iowa Natural Heritage Foundation \$ 50,000

GRANT AND MATCH - ACTIVITIES, COSTS AND ACRES \$4,549,100/3,327 acres  
Fee Acquired \$3,924,100/2,438 acres  
Enhanced \$ 622,000/889 acres  
Indirect Costs \$ 3,000

NON-MATCHING PARTNERS  
U.S. Fish and Wildlife Service \$50,000

PROPOSAL PURPOSE AND DESCRIPTION: This is phase 2 of 4 anticipated NAWCA proposals directed at wetland conservation projects along the main-stem tributaries of the Mississippi River which traverse central and southern Iowa. The Phase I project (Iowa River Corridor) was focused on the central and lower Iowa River. This proposal offers an equally impressive number and quality of wetland conservation projects along the Skunk and Des Moines Rivers. Through an extended planning process that began in late 2007, we have been able to target conservation activities to protection and enhancement of two of the largest wetland habitat complexes in the state of Iowa: Pool 19 on the Mississippi River and Red Rock Reservoir on the Des Moines River. Both areas are known for the large number of waterfowl and diverse assemblages of shorebirds, herons, rails, and other waterbirds they host during both spring and fall migration. In addition, we are conserving bottomland deciduous forests associated with two of Iowa's State Forests, which represent some of the largest forested tracts in the state, and represent important habitats as both migration stopovers and breeding areas for many species of neotropical

migrants.

**HABITAT TYPES AND WILDLIFE BENEFITTING:** The proposal area is an important part of a major migration corridor for waterfowl, including Lesser Scaup, and other wetland birds moving north from the Central Mississippi River to the Prairie Pothole Region (PPR) and other breeding grounds to the North and West. The proposal area includes important mid-latitude migration habitats on the Central Mississippi River, and provides similar floodplain habitats along the central and lower Des Moines and Skunk Rivers to expand on a series of large habitat complexes which serve as important migration stopover sites. The added semi-permanent wetlands and seasonally flooded mud flats and moist soil management areas will increase the number of migratory birds these areas serve during spring and fall migrations. The proposal area also supports breeding populations of a wide variety of migratory bird species, and this proposal conserves a diverse set of palustrine herbaceous and forested wetlands along with some of the best remaining mature bottomland forest as well as adding to some large blocks of tallgrass prairie. These habitats are additions to the large wetland complexes, and act to improve the water quality, aquatic vegetation, and invertebrate communities in these important migration habitats.

**PUBLIC BENEFITS/PUBLIC ACCESS:** The proposal tracts provide excellent access to wetland habitats and serve as much needed stages for both structured and unstructured opportunities to experience, appreciate, and learn about Iowa's native floodplain wetland habitats and the benefits of reconnecting the river to its floodplain. Activities in this proposal will provide significant improvements in flood control and water quality through wetland and grassland habitat restoration which include conversion of row crop agriculture within and adjacent to the floodplain of the Des Moines and Skunk Rivers. Every tract included in this project will be open to public access, however, some consumptive and passive use restrictions may apply. Public fishing, swimming, hiking, bird watching, natural resource interpretation, scientific education and research and scenic enjoyment are permitted.

**NEW PARTNERS:** This project marks a new partnership with the Lee and Warren County Conservation Boards. The significant work of these two county conservation organizations and the local citizens, businesses and conservation groups with which they work was the impetus for initiating this grant request. During the preparation of this proposal, several additional conservation opportunities have been identified that would not have been recognized were it not for this new partnership. The Des Moines River Valley project combines the work of these new partners with the efforts of some of the strongest conservation organizations operating in Iowa, including the Iowa Natural Heritage Foundation, Pheasants Forever, and the Iowa Department of Natural Resources Wildlife Bureau. This is the first NAWCA project that includes partnership with Iowa's State Forest Program. This new NAWCA partnership is a result of several recent cooperative ventures between the Forestry and Wildlife Bureaus aimed at improving forest management and bird habitat on Iowa's deciduous upland and bottomland forests, and represents one of the greatest opportunities for expansion of bird conservation in Iowa.

**RELATIONSHIP TO PREVIOUSLY FUNDED NAWCA PROPOSALS:** This project complements four other completed and ongoing NAWCA proposals that have focused on creating large functional wetland complexes within central Iowa. This project also complements long-standing cooperative agreements between the DNR and USFWS for the expansion of Iowa's Waterfowl Production Areas.

**THREATS AND SPECIAL CIRCUMSTANCES:** Major threats to Iowa's wetlands today include: non-point source pollution, silt accumulation, increased surface flows and drainage inputs, exploding rough fish populations and a general lack of infrastructure needed to adequately maintain and manage these sites. As the health and biological integrity of these wetlands continues to deteriorate, future restoration and enhancement efforts will only become increasingly more difficult and expensive. A significant match contribution (Iowa DNR - \$2,015,000) will be lost if this proposal is not funded this year.

**FINANCIAL PLAN TABLE EXAMPLE**

**PROPOSAL FINANCIAL TABLE**

ACTIVITIES	GRANT \$	MATCHING PARTNERS				TRACT ID	NON-MATCH \$
		ABBREVIATED PARTNER NAME	OLD MATCH \$	NEW MATCH \$	TOTAL MATCH + GRANT \$		
Land Costs: Fee Acquired	\$180,000	IDNR			\$180,000	1	
		LCCB		\$580,000	\$580,000	1	
	\$45,000	IDNR			\$45,000	2	
		INHF		\$620,650	\$620,650	2	
		LCCB		\$154,350	\$154,350	2	
		HTU	\$73,800		\$73,800	3	
		IDNR	\$475,000		\$475,000	4	
		PF-L		\$10,000	\$10,000	5	
		TRCF		\$10,000	\$10,000	5	
		IDNR		\$63,000	\$63,000	6	
		PF-W		\$20,000	\$20,000	7	
		PF-IC		\$10,000	\$10,000	7	
		IDNR	\$1,027,000		\$1,027,000	8	
	\$475,000	IDNR		\$125,000	\$600,000	11	
Appraisals & Other Acquisition Costs		LCCB		\$25,000	\$25,000	1	
		LCCB		\$30,300	\$30,300	2	
<b>A. TOTAL FEE ACQUIRED</b>	<b>\$700,000</b>		<b>\$1,575,800</b>	<b>\$1,648,300</b>	<b>\$3,924,100</b>		
<b>G. TOTAL ACQUIRED (Sum of A,B,C,D,E,F)</b>	<b>\$700,000</b>		<b>\$1,575,800</b>	<b>\$1,648,300</b>	<b>\$3,924,100</b>		
Contracts	\$100,000	IDNR		\$150,000	\$250,000	9	
	\$80,000	IDNR		\$162,000	\$242,000	10	
Materials & Equipment	\$55,000	IDNR			\$55,000	9	
		USFWS				9	\$25,000
	\$25,000	IDNR		\$10,000	\$35,000	10	
		USFWS				10	\$25,000
Non-Contract Personnel & Travel	\$20,000	IDNR			\$20,000	9	
	\$20,000	IDNR			\$20,000	10	
<b>I. TOTAL ENHANCED</b>	<b>\$300,000</b>		<b>\$0</b>	<b>\$322,000</b>	<b>\$622,000</b>		<b>\$50,000</b>
<b>M. GRAND TOTAL DIRECT (Sum of G and H,I,J,K,L)</b>	<b>\$1,000,000</b>		<b>\$1,575,800</b>	<b>\$1,970,300</b>	<b>\$4,546,100</b>		<b>\$50,000</b>
Indirect Costs		IDNR		\$3,000	\$3,000	9	
<b>N. TOTAL INDIRECT</b>	<b>\$0</b>		<b>\$0</b>	<b>\$3,000</b>	<b>\$3,000</b>		<b>\$0</b>
<b>GRAND TOTAL (Sum of M and N)</b>	<b>\$1,000,000</b>		<b>\$1,575,800</b>	<b>\$1,973,300</b>	<b>\$4,549,100</b>		<b>\$50,000</b>
PARTNER INFORMATION	GRANT \$	MATCHING PARTNERS				TRACT ID	NON-MATCH \$
		ABBREVIATED PARTNER NAME	OLD MATCH \$	NEW MATCH \$	TOTAL MATCH + GRANT \$		
Iowa Department of Natural Resources	\$1,000,000	IDNR	\$1,502,000	\$513,000	\$3,015,000	1,2,4,6,8,9,10	
Iowa Natural Heritage Foundation		INHF		\$620,650	\$620,650	2	
Lee County Conservation Board		LCCB		\$789,650	\$789,650	1,2	
Hardwood Timberland Unlimited		HTU	\$73,800		\$73,800	3	
Pheasants Forever, Warren County Chapter		PF-W		\$20,000	\$20,000	7	
Pheasants Forever, Iowa		PF-IC		\$10,000	\$10,000	7	

Capital Chapter							
Pheasants Forever, Lee County Chapter		PF-L		\$10,000	\$10,000	5	
Three Rivers Conservation Foundation		TRCF		\$10,000	\$10,000	5	
U.S. Fish and Wildlife Service		USFWS				9,10	\$50,000
<b>GRAND TOTAL</b>	<b>\$1,000,000</b>		<b>\$1,575,800</b>	<b>\$1,973,300</b>	<b>\$4,549,100</b>		<b>\$50,000</b>

NOTE: In this example, there is no MCP involved and the “Previously Approved MCP” row is not included.



**WORK PLAN EXAMPLE**

NOTE: This Work Plan example lists only two of the acquisition tracts involved (all tracts are shown in the TAQ 4, TAQ 5, and Tract Table examples).

**WORK PLAN (FINANCIAL PLAN JUSTIFICATION)**

**TRACT 1 - Jones**

**OVERALL ACRES AFFECTED: 459**

**CENTRAL LOCATION: 40.587980, -91.393166**

**STATE/FED AGENCIES HOLDING INTERESTS: Lee County (IA) Conservation Board**

**Acreeage Summary of Grant/Match Activities on the Tract:**

**Acquisition: 459      Restoration:      Enhancement:      Establishment:**

**Describe all grant/match activities occurring on the tract here:** Grant and match funds will be used to acquire 459 acres of palustrine emergent, palustrine forested, and lacustrine wetlands as part of the Lee County Conservation District. The property is currently privately owned and unavailable to the public. By acquiring the tract, the Conservation District will be able to better manage a large, contiguous block of habitat for wildlife and provide conservation-compatible recreational opportunities for the public.

**Tract 1 - Jones: Acquisition Financial Plan Justification - \$785,000 and 459 acres  
Grant - \$180,000      Match - \$605,000      Non-Match - \$ \_\_\_\_\_      Completion: May 2011**

LAND ACQUISITION DISCLOSURE

Type of acquisition: fee title  
 Holder of NAWCA conservation interest: Lee County Conservation Board  
 Grantor/Seller of conservation interest: Jones family  
 Tenure of conservation interest: perpetuity  
 All funding sources for acquisition: LCCB and grant funds  
 Are mineral rights severed or included? included  
 Are water rights severed or included? n/a

*EASEMENTS: n/a*

*LEASES: n/a*

Item & Work	Units	\$/unit	Total \$	Schedule (month, year)	Funding Source (Grant or Partner name)
<b>LAND COSTS</b>					
Fee title			760,000	May 2011	Grant and LCCB
Subtotal Land Costs					\$760,000
<b>APPRAISALS and OTHER ACQUISITION COSTS</b>					
Appraisal	1	15,000	15,000	April 2011	LCCB
Legal fees, titlework, closing costs			10,000	May 2011	LCCB
Subtotal Appraisals and Other Acquisition Costs					\$25,000
<b>TOTAL ACQUISITION DIRECT COSTS</b>					<b>\$785,000</b>

**TRACT 2 - Nordberg**

**OVERALL ACRES AFFECTED: 438**

**CENTRAL LOCATION: 40.546688, -91.421373**

**STATE/FED AGENCIES HOLDING INTERESTS: Lee County (IA) Conservation Board**

**Acreege Summary of Grant/Match Activities on the Tract:**

**Acquisition: 438      Restoration:      Enhancement:      Establishment:**

**Describe all grant/match activities occurring on the tract here:** Grant and match funds will be used to acquire 438 acres of palustrine emergent and lacustrine wetlands as part of the Lee County Conservation District. The property is currently privately owned and unavailable to the public. By acquiring the tract, the Conservation District will be add to a network of wildlife habitats and reduce conflicts with the public over land management activities such as burning. The tract will also provide another location for safe, conservation-compatible public recreation such as bird-watching, fishing, and hunting.

**Tract 2 – Nordberg: Acquisition Financial Plan Justification - \$850,300 and 438 acres**  
**Grant - \$45,000      Match - \$805,300      Non-Match - \$ \_\_\_\_\_      Completion: June 2011**

LAND ACQUISITION DISCLOSURE

Type of acquisition: fee title  
 Holder of NAWCA conservation interest: Lee County Conservation Board  
 Grantor/Seller of conservation interest: Nordberg family  
 Tenure of conservation interest: perpetuity  
 All funding sources for acquisition: LCCB, Iowa Natural Heritage Fund, and grant funds  
 Are mineral rights severed or included? included  
 Are water rights severed or included? n/a

EASEMENTS: n/a

LEASES: n/a

Item & Work	Units	\$/unit	Total \$	Schedule (month, year)	Funding Source (Grant or Partner name)
<b>Land Costs</b>					
Fee title			820,000	June 2011	INHF, Grant, LCCB
Subtotal Land Costs					\$820,000
<b>APPRAISALS and OTHER ACQUISITION COSTS</b>					
Appraisal	1	15,000	15,000	April 2011	LCCB
Legal fees, titlework, closing costs			15,300	June 2011	LCCB
Subtotal Appraisals and Other Acquisition Costs					\$30,300
<b>TOTAL ACQUISITION DIRECT COSTS</b>					<b>\$850,300</b>

**\*\*The remaining tracts in the Acquisition Financial Plan Justification were deleted to save space\*\***

**TRACT 9 - Red Rock Mgmt. Unit**

**OVERALL ACRES AFFECTED: 429**

**CENTRAL LOCATION: 41.499867, -93.321698**

**STATE/FED AGENCIES HOLDING INTERESTS: Iowa DNR**

**Acreege Summary of Grant/Match Activities on the Tract:**

**Acquisition:      Restoration:      Enhancement: 429      Establishment:**

**Describe all grant/match activities occurring on the tract here:** Grant, match, and non-match funds will be used to enhance a 429-acre moist soil unit. Enhancement will involve soil grading and planting to improve water flow and diversity of habitats on the unit. Palustrine emergent, palustrine forested, and palustrine scrub-shrub habitats will be enhanced. All physical enhancements will require no maintenance

and be largely self-sustaining. Success of plantings will be monitored for 5 years following planting, with partial re-planting if failure exceeds 30%.

**Tract 9 - Red Rock Mgmt. Unit: Enhancement Financial Plan Justification - \$350,000 and 429 acres**  
**Grant - \$175,000 Match - \$150,000 Non-Match - \$25,000 Completion: Sept 2012**

Item & Work	Units	\$/unit	Total \$	Schedule (month, year)	Funding Source (Grant or Partner name)
<b>CONTRACTS</b>					
Earthwork (Grading, scraping)			185,000		IDNR, Grant
Planting			65,000		IDNR, Grant
Subtotal Contracts					\$250,000
<b>MATERIALS and EQUIPMENT</b>					
Tree plugs (ash, maple, swamp oak)	1,500	\$10	15,000		Grant
Shrub plugs (willow, dogwood, etc.)	5,000	\$5	25,000		USFWS
Soil	20,000 cy	\$2	40,000		Grant
Subtotal Materials and Equipment					\$80,000
<b>NON-CONTRACT PERSONNEL</b>					
Project management			20,000	Project period	Grant
Subtotal Non-Contract Personnel					\$20,000
<b>TOTAL RESTORATION DIRECT COSTS</b>					\$350,000

**Tract 9-Red Rock Management Unit Indirect Costs Financial Plan Justification - \$3,000**  
**Grant \$ \_\_\_\_\_ Match \$3,000 Non-match \$ \_\_\_\_\_**

Allowable Category from I.C Rate Agreement	Specific Financial Plan Line Items to Which Indirect Cost is Applied	Direct Cost Base Amount	Approved Rate (%)* / Agreement Date	Partner to which I.C. Rate Applies	I.C. Grant Amount	I.C. Match Amount	Total Indirect Cost
Salaries & wages	N-C Personnel	\$20,000	15%/8.09	IDNR	\$	\$3000	\$3000

**TRACT 10 – Des Moines Mgmt. Unit**  
**OVERALL ACRES AFFECTED: 460**  
**CENTRAL LOCATION: 41.477768, -93.321698**  
**STATE/FED AGENCIES HOLDING INTERESTS: Iowa DNR**

**Acreeage Summary of Grant/Match Activities on the Tract:**

**Acquisition: Restoration: Enhancement: 460 Establishment:**

**Describe all grant/match activities occurring on the tract here:** Grant, match, and non-match funds will be used to enhance a 460-acre moist soil unit. Enhancement will involve soil grading and supplemental planting to improve water flow and habitat function on the unit. Palustrine emergent and palustrine forested habitats will be enhanced. All physical enhancements will require no maintenance and be largely self-sustaining. Success of plantings will be monitored for 5 years following planting, with partial re-planting if failure exceeds 30%.

**Tract 10 – Des Moines Mgmt. Unit: Enhancement Financial Plan Justification - \$322,000 and 460 acres**  
**Grant - \$125,000 Match - \$172,000 Non-Match - \$25,000 Completion: Sept 2012**

<b>Item &amp; Work</b>	<b>Units</b>	<b>\$/unit</b>	<b>Total \$</b>	<b>Schedule (month, year)</b>	<b>Funding Source (Grant or Partner name)</b>
<b>CONTRACTS</b>					
Earthwork			177,000		Grant, IDNR
Planting			65,000		IDNR
Subtotal Contracts					\$242,000
<b>MATERIALS and EQUIPMENT</b>					
Tree plugs	1,000	\$10	10,000		IDNR
Sedge and rush plugs	25,000	\$2	50,000		Grant, USFWS
Subtotal Materials and Equipment					\$60,000
<b>NON-CONTRACT PERSONNEL</b>					
Project oversight			20,000		Grant
Subtotal Non-Contract Personnel					\$20,000
<b>TOTAL ENHANCEMENT DIRECT COSTS</b>					<b>\$322,000</b>

---



---

**TECHNICAL ASSESSMENT QUESTION (TAQ) #1 EXAMPLE**

*(In this example, Tract 1 is an acquisition of bottomland hardwoods and Tract 2 is enhancement of an existing moist-soil impoundment)*

Species	Numbers affected and life cycle stage (Breeding, Migration, Wintering)	Tract Importance
<b>High Priority</b>		
Mallard	Migration and wintering - up to 12,000 expected collectively on grant and match tracts	Tract 1 will secure long-term bottomland hardwood habitat for this species. Moist soil enhancements on Tract 2 will increase foraging habitat.
Northern Pintail	Migration and wintering - up to 2,000 expected primarily on Tract 2. Fewer numbers on Tract 1.	Moist soil enhancements on Tract 2 will increase foraging habitat and will be of greatest benefit to pintails
Lesser Scaup	Wintering – up to 300 expected collectively on grant and match tracts.	Long-term protection of Tract 1 and its adjacent riverine habitat will provide secure feeding, resting and roosting locations.
<b>Priority</b>		
Wood Duck	Migration and wintering - up to 10,000 expected collectively on grant and match tracts. Breeding – 50 breeding pairs expected	Tract 1 will secure long-term bottomland hardwood habitat for this species. Moist soil enhancements on Tract 2 will increase foraging habitat. Old growth bottomland hardwoods on Tract 1 provides excellent nesting habitat.
<b>Other</b>		
Hooded Merganser	Wintering – up to 200 expected collectively on grant and match tracts. Breeding – common breeder in region, but at low densities, 1 or 2 breeding pairs expected	
Northern Shoveler	Wintering - up to 200 expected collectively on grant and match tracts.	
Gadwall	Wintering – up to 300 expected collectively on grant and match tracts	Most abundant on Tract 2

---



---

**TAQ #2 EXAMPLE**

**A. NAWCA Priority Bird Species for BCR 22**

Species/Plan	Numbers Affected	Benefits of Project	Tract Importance
<b>King Rail</b> NAWCA (BCR 22) <sup>1</sup> NAWCP <sup>2</sup> (High Concern)	Breeder, Migrant  10 breeding pairs	Benefit from restoration and management of seasonal and semi-permanent wetlands with a well-developed zone of emergent vegetation.	<u>1 &amp; 2</u> : Provide 145 acres of palustrine emergent wetland intermixed with 476 acres of grassland in the floodplain of the South River.  <u>3, 8, 9 &amp; 10</u> : Provide 889 acres of diverse shallow wetland habitats associated with two sub-impoundments (i.e., moist soil management

UMVGL-WCP <sup>3</sup> (Highly Imperiled)	100 birds during migration	Benefit from restoration and management of sedge meadow zones of wetland edges. Also benefits from restoration and protection of grasslands along river and wetland margins.	units) along the Des Moines River above Red Rock Reservoir.  <u>11</u> : Expected to provide another 35 acres of palustrine emergent wetland intermixed with 100 acres of grassland in floodplain habitats in the Des Moines and Skunk River Watersheds.
UMRGLJV-WHCS <sup>9</sup> (Focal Species)	Iowa Status (B): <i>Endangered Unknown</i>	herbaceous floodplain wetlands.	
<b>American Bittern</b>	Breeder, Migrant	Benefit from restoration and enhancement of large prairie marshes and adjacent upland grasslands.	<u>1 &amp; 2</u> : Provide 145 acres of palustrine emergent wetland intermixed with 476 acres of grassland in the floodplain of the South River.
NAWCA (BCR 22) <sup>1</sup>	30 breeding pairs	More abundant in larger wetlands with tall emergent vegetation. Nests in dense emergent vegetation over water and occasionally in tall grassland vegetation.	<u>4</u> : Provides 56 acres of upland grass and 65 acres of palustrine emergent wetland adjacent to Rock Creek Marsh, a diverse 120 acre palustrine emergent wetland above Rock Creek Lake.
NAWCP <sup>2</sup> (High Concern)	300 birds during migration		<u>11</u> : Expected to provide another 35 acres of palustrine emergent wetland intermixed with 100 acres of grassland in floodplain habitats in the Des Moines and Skunk River Watersheds.
UMVGL-WCP <sup>3</sup> (High Concern)	Iowa Status (B): <i>Rare Stable</i>	Benefit from restoration of tallgrass prairie around wetlands.	<u>3, 8, 9 &amp; 10</u> : Provide 889 acres of diverse shallow wetland habitats associated with two sub-impoundments along the Des Moines River above Red Rock Reservoir.
UMRGLJV-WHCS <sup>9</sup>			
USFWS Region 3 - Priority Species <sup>12</sup>			
IWAP-SGCN(B) <sup>11</sup>			

## B. Other Wetland-Associated Bird Species

Species/Plan	Numbers Affected	Benefits of Project	Tract Importance
<b>American Golden-Plover</b>	Migrant	Benefit from wetland restorations that include seasonal and semi-permanent zones to create mud flats and shallow water zones.	<u>3, 8, 9 &amp; 10</u> : Provide 889 acres of diverse shallow wetland habitats associated with two sub-impoundments along the Des Moines River above Red Rock Reservoir. Water control mechanisms and management regimes will favor a mix of shallow open water, mudflats, and moderate emergent vegetation in late summer and early fall. Water levels will slowly rise throughout the fall providing shallow water over a wide area dominated by moist soil plants.  <u>1 &amp; 2</u> : Provide 145 acres of palustrine emergent wetland intermixed with 476 acres of grassland in the floodplain of the South River. Tract C includes two large wetlands (46 and 32 acres). These floodplain wetlands are expected to provide ideal migration habitat for this species in late summer and early fall.
USSCP <sup>4</sup> (High Concern-GL)	5,000 birds during migration		
UMVGL-RSCP <sup>5</sup> (Moderate Concern)	Iowa Status (M): <i>Common</i>		
UMRGLJV-SHCS <sup>8</sup> (Focal Species-M)			
IWAP-SGCN(M) <sup>11</sup>			<u>11</u> : Expected to provide another 35 acres of

			palustrine emergent wetland intermixed with 100 acres of grassland in floodplain habitats in the Des Moines River Watershed.
<b>Solitary Sandpiper</b>	Migrant	Benefit from wetland restorations that include seasonal and semi-permanent zones to create mud flats and shallow water zones.	<b>3, 8, 9 &amp; 10:</b> Provide 889 acres of diverse shallow wetland habitats associated with two sub-impoundments along the Des Moines River above Red Rock Reservoir. Water control mechanisms and management regimes will favor a mix of shallow open water, mudflats, and moderate emergent vegetation in late summer and early fall. Water levels will slowly rise throughout the fall providing shallow water over a wide area dominated by moist soil plants.
USSCP <sup>4</sup> (High Concern-GL)	500 birds during migration		
UMVGL-RSCP <sup>5</sup> (Moderate Concern)	Iowa Status (M): <i>Common</i>		
UMRGLJV-SHCS <sup>8</sup>			
IWAP-SGCN(M) <sup>11</sup>			

---

**TAQ #3 EXAMPLE TABLE**

---

**A. National priority wetland areas:**

National Bird Plan Priority Areas	In	Partially In	Out
NAWMP	X (Tracts 1-6)	X (Tracts 7, 8)	X (Tracts 9, 10)
PIF	X (Tracts 1-9)		X (Tract 10)
Wading Birds	X (All Tracts)		
Shorebirds	X (All Tracts)		

\*You may include a written description of how the proposed tract(s) address the national bird plan priority areas.

**B. Regional important wetland areas:**

\*Briefly describe how the proposed grant and match activities will address the current regional geographic priorities based on Joint Venture and other partner’s science and planning information. It is prudent to work with [Joint Venture staff](#) to ensure that this proposal is based on the most current science and planning for all wetland associated migratory birds.

**TAQ #4 EXAMPLE**

ACTIVITY AND TRACTS IN THE PROPOSAL	STATUS, TYPES, AND ACRES OF WETLANDS								UPLANDS	TOTAL	
	Note: Types subsidiary to types listed below have the same status.										
	DECREASING			STABLE			INCREASING	NO TREND DATA			
PEM	PFO	E2Veg	E1	L	R	M2, PSS, PUB, E2US	PML, PRB, E2AB				
<b>SECTION A</b>											
Fee	908.3	207.8			109.8	26.7	4.4		1,181.0	2,438.0	
ACQUIRED TOTAL	908.3	207.8			109.8	26.7	4.4		1,181.0	2,438.0	
ENHANCED	757.2	63.2					68.6			889.0	
TYPE TOTALS	1,665.5	271.0							1,181.0	3,327.0	
STATUS TOTALS	1,936.5			136.5			73.0		1,181.0	3,327.0	
GRAND TOTALS									2,146.0	1,181.0	3,327.0
<b>SECTION B</b>											
Tract: 1 (G,NM)	290.7	84.5			83.8					459.0	
Tract: 2 (G,NM)	412.0				26.0					438.0	
Tract: 3 (OM)	94.0	8.3				12.7			427.0	542.0	
Tract: 4 (OM)	50.5	14.3				5.2			56.0	126.0	
Tract: 5 (NM)	6.0								133.0	139.0	
Tract: 6 (NM)	12.7	40.1				1.8	0.4		205.0	260.0	
Tract: 7 (NM)	2.3	14.8				2.1			160.8	180.0	
Tract: 8 (OM)	51.3	22.8					1.9			76.0	
Tract: 9 (G,NM,NO)	312.2	48.2					68.6			429.0	
Tract: 10 (G,NM,NO)	445.0	15.0								460.0	
Tract: 11 Unidentified (G,NM)	35.0	23.0				3.0	4.0		153.0	218.0	



**TAQ #5 EXAMPLE**

ACTIVITY	ACRES BY LONGEVITY OF BENEFITS				TOTAL ACRES
	PERPETUITY	*26-99	**10-25	< 10	
<b>SECTION A</b>					
Fee	2,438				2,438
TOTAL ACQUIRED	2,438				2,438
ENHANCED		889			889
TOTAL	2,438	889			3,327
<b>SECTION B</b>					
Tract:1 (G,NM)	459				459
Tract:2 (G,NM)	438				438
Tract:3 (OM)	542				542
Tract:4 (OM)	126				126
Tract:5 (NM)	139				139
Tract:6 (NM)	260				260
Tract:7 (NM)	180				180
Tract:8 (OM)	76				76
Tract:9 (G,NM,NO)		429			429
Tract:10 (G,NM,NO)		460			460
Tract:11 Unidentified (G,NM)	218				218

**TRACT TABLE EXAMPLE**

**Tract Table**

Tract ID	Activity Type	Wetland Acres	Upland Acres	Riparian Miles	Public Access	Funding Category	Funding Source	County and State	Central Tract Location in Decimal Degrees	Final Title Holder
Tract 1	Fee Acquired	459.0	0	0	0	G,NM	NAWCA, LCCB	Lee County, Iowa	40.587980, -91.393166	LCCB
Tract 2	Fee Acquired	438.0	0	0	0	G,NM	NAWCA, LCCB, INHF	Lee County, Iowa	40.546688, -91.421373	LCCB
Tract 3	Fee Acquired	115.0	427.0	1.5	500	OM	HTU	Warren County, Iowa	41.342359, -93.479101	WCCB
Tract 4	Fee Acquired	70.0	56.0	0.7	126	OM	IDNR	Warren County, Iowa	41.451107, -93.360919	IDNR
Tract 5	Fee Acquired	6.0	133.0	0.6	139	NM	PF-L, TRCF	Jasper County, Iowa	41.773713, -92.831597	IDNR
Tract 6	Fee Acquired	55.0	205.0	1.5	260	NM	IDNR	Lee County, Iowa	40.572682, -91.648816	IDNR
Tract 7	Fee Acquired	19.2	160.8	0.6	150	NM	PF-W, PF-IC	Monroe County, Iowa	41.099689, -93.070235	IDNR
Tract 8	Fee Acquired	29.8	46.2	0.4	76	OM	IDNR	Monroe County, Iowa	41.130411, -93.089533	IDNR
Tract 9	Enhanced	429.0	0	0	429	G,NM, NO	NAWCA, IDNR, USFWS	Polk County, Iowa	41.499867, -93.348154	USFWS
Tract 10	Enhanced	460.0	0	0	460	G,NM, NO	NAWCA, IDNR, USFWS	Warren & Marion Counties, Iowa	41.477768, -93.321698	USFWS
Tract 11 Unidentified Tracts	Fee Acquired	65.0	153.0	1.0	218	G,NM	NAWCA, IDNR	16 county proposal area, Iowa	41.124510, -92.373827	IDNR, WCCB, LCCB
<b>Total Acres</b>		<b>2,146</b>	<b>1,181</b>		<b>2,358</b>					

**FINAL TITLEHOLDER SUMMARY: LCCB - 897 acres; USFWS - 889 acres; IDNR - 781 acres; WCCB - 542 acres; IDNR/WCCB/LCCB - 218 acres TBD.**

---

---

**OPTIONAL MATCHING CONTRIBUTION PLAN EXAMPLE**

**NOTE:** The tract name and specific location are fictional in this example. The descriptions have been adapted from previous submissions.

**What is the Match Plan Amount and Purpose?** This matching contribution plan seeks to maintain the eligibility of \$2,500,000 in non-federal funds for use as match in two future proposals that will be submitted over the next five years for wetland conservation work in the Iowa River Corridor. Those proposals will include habitat protection, restoration, and enhancement and will likely incorporate major work elements related to improving priority wetland habitat for migratory birds.

**What is the Match Plan Intent?** Iowa Natural Heritage Foundation (INHF) is participating in this proposal as a 10% partner by contributing \$2,500,000 of eligible match from a fee-title land protection project. The remaining balance of match funds from the 1,126 acre Tract 12 - Elk Creek Meadows acquisition (\$2,500,000) will provide a foundation of match for two more NAWCA proposals that will focus on priority wetland habitat for migratory birds in the Iowa River Corridor.

**What is the Match Plan Need?** Non-federal match is difficult to secure and is becoming scarcer as state funding for conservation work becomes more competitive. It is very unlikely that without approval of this matching contribution plan that sufficient non-federal match will be available for two more NAWCA proposals. Approval of this matching contributions plan will establish the financial foundation to accomplish priority wetland conservation work in the Iowa River Corridor. This future work will further support the long-term wetland conservation objectives defined in the Upper Mississippi River/Great Lakes Region Joint Venture implementation plan.

**Is there a Match Plan Chart?** Yes, see chart below.

**Where is the location of the MCP acquisition tract?** Tract 12 - Elk Creek Meadows is a 1,126 acre fee-title acquisition located in Marion County, Iowa (41.401477, -93.078003). The tract will be incorporated as a unit of Elk Rock State Park.

<b>Match Plan Partner</b>	<b>Current Proposal</b>	<b>Proposal II</b>	<b>Proposal III</b>	<b>Total \$</b>
Iowa Natural Heritage Foundation	\$2,500,000	\$1,500,000	\$1,000,000	\$5,000,000
<b>Current Proposal Total</b>	<b>\$2,500,000</b>			
<b>MCP Future Total</b>		<b>\$1,500,000</b>	<b>\$1,000,000</b>	<b>\$2,500,000</b>

**OTHER ATTACHMENTS:**

<b><u>A. BIRD CONSERVATION REGIONS AND QUESTION 2 PRIORITY NAWCA SPECIES</u></b>		
<b>BCR 1 ALEUTIAN/BERING SEA ISLANDS</b>	<b>BCR 2 WESTERN ALASKA</b>	<b>BCR 3 ARCTIC PLAINS AND MOUNTAINS</b>
Red-faced Cormorant Pelagic Cormorant Black Oystercatcher Rock Sandpiper ( <i>ptilocnemis</i> ssp.) Red-legged Kittiwake Aleutian Tern Arctic Tern Marbled Murrelet Kittlitz's Murrelet Whiskered Auklet	Red-throated Loon Yellow-billed Loon Red-faced Cormorant Pelagic Cormorant Black Oystercatcher Solitary Sandpiper Lesser Yellowlegs Whimbrel Bristle-thighed Curlew Hudsonian Godwit Bar-tailed Godwit Marbled Godwit Red Knot ( <i>roselaari</i> ssp.) Rock Sandpiper ( <i>ptilocnemis</i> ssp.) (nb) Dunlin ( <i>arctica</i> ssp.) (nb) Short-billed Dowitcher Aleutian Tern Arctic Tern Marbled Murrelet Kittlitz's Murrelet	Red-throated Loon Yellow-billed Loon Whimbrel Bar-tailed Godwit Red Knot ( <i>roselaari</i> ssp.) Dunlin ( <i>arctica</i> ssp.) Buff-breasted Sandpiper Arctic Tern
<b>BCR 4 NORTHWESTERN INTERIOR FOREST</b>	<b>BCR 5 NORTHERN PACIFIC RAINFOREST</b>	<b>BCR 9 GREAT BASIN</b>
Horned Grebe Solitary Sandpiper Lesser Yellowlegs Whimbrel Bristle-thighed Curlew Hudsonian Godwit Red Knot ( <i>roselaari</i> ssp.) Rock Sandpiper ( <i>ptilocnemis</i> ssp.) (nb) Short-billed Dowitcher Olive-sided Flycatcher Rusty Blackbird	Yellow-billed Loon (nb) Western Grebe (nb) Red-faced Cormorant Pelagic Cormorant ( <i>pelagicus</i> ssp.) Bald Eagle Black Oystercatcher Solitary Sandpiper (nb) Lesser Yellowlegs (nb) Whimbrel (nb) Long-billed Curlew (nb) Hudsonian Godwit (nb) Marbled Godwit (nb) Red Knot ( <i>roselaari</i> ssp.) (nb) Short-billed Dowitcher (nb) Aleutian Tern Caspian Tern Arctic Tern Marbled Murrelet Kittlitz's Murrelet Black Swift Rufous Hummingbird Olive-sided Flycatcher Willow Flycatcher	Eared Grebe (nb) Bald Eagle Yellow Rail Snowy Plover Long-billed Curlew Marbled Godwit (nb) Yellow-billed Cuckoo Black Swift Calliope Hummingbird Lewis's Woodpecker Willow Flycatcher Tricolored Blackbird
<b>BCR 10 NORTHERN ROCKIES</b>	<b>BCR 11 PRAIRIE POTHOLE</b>	<b>BCR 12 BOREAL HARDWOOD TRANSITION</b>
Bald Eagle Swainson's Hawk Long-billed Curlew Yellow-billed Cuckoo	Horned Grebe American Bittern Least Bittern Bald Eagle	Pied-billed Grebe Horned Grebe (nb) American Bittern Bald Eagle

Black Swift Calliope Hummingbird Lewis's Woodpecker Olive-sided Flycatcher Willow Flycatcher	Swainson's Hawk Yellow Rail King Rail Solitary Sandpiper (nb) Long-billed Curlew Hudsonian Godwit (nb) Marbled Godwit Buff-breasted Sandpiper (nb) Short-billed Dowitcher (nb) American Woodcock Black Tern Short-eared Owl Red-headed Woodpecker Nelson's Sharp-tailed Sparrow	Yellow Rail Solitary Sandpiper (nb) Whimbrel (nb) Hudsonian Godwit (nb) Marbled Godwit (nb) Red Knot (rufa ssp.) (nb) Buff-breasted Sandpiper (nb) Short-billed Dowitcher (nb) American Woodcock Black Tern Common Tern Red-headed Woodpecker Olive-sided Flycatcher Wood Thrush Golden-winged Warbler Canada Warbler Henslow's Sparrow Rusty Blackbird
<b>BCR 13 LOWER GREAT LAKES/ST. LAWRENCE PLAIN</b>	<b>BCR 14 ATLANTIC NORTHERN FORESTS</b>	<b>BCR 15 SIERRA NEVADA</b>
Pied-billed Grebe Horned Grebe (nb) American Bittern Least Bittern Black-crowned Night-Heron Bald Eagle King Rail Solitary Sandpiper (nb) Lesser Yellowlegs (nb) Whimbrel (nb) Hudsonian Godwit (nb) Marbled Godwit (nb) Red Knot (rufa ssp.) (nb) Semipalmated Sandpiper (Eastern) (nb) Buff-breasted Sandpiper (nb) American Woodcock Black Tern Common Tern Short-eared Owl (nb) Red-headed Woodpecker Wood Thrush Blue-winged Warbler Golden-winged Warbler Cerulean Warbler Canada Warbler Henslow's Sparrow	Red-throated Loon (nb) Pied-billed Grebe Horned Grebe (nb) Great Cormorant (nb) American Bittern Least Bittern Snowy Egret Bald Eagle Yellow Rail Solitary Sandpiper (nb) Lesser Yellowlegs (nb) Whimbrel (nb) Hudsonian Godwit (nb) Red Knot (rufa ssp.) (nb) Semipalmated Sandpiper (Eastern) (nb) Purple Sandpiper (nb) American Woodcock Arctic Tern Olive-sided Flycatcher Wood Thrush Blue-winged Warbler Canada Warbler Nelson's Sharp-tailed Sparrow Saltmarsh Sharp-tailed Sparrow Rusty Blackbird	Bald Eagle Black Swift Calliope Hummingbird Lewis's Woodpecker Olive-sided Flycatcher Willow Flycatcher
<b>BCR 16 SOUTHERN ROCKIES/COLORADO PLATEAU</b>	<b>BCR 17 BADLANDS AND PRAIRIES</b>	<b>BCR 18 SHORTGRASS PRAIRIE</b>
Gunnison Sage Grouse American Bittern Bald Eagle Snowy Plover Long-billed Curlew Yellow-billed Cuckoo Lewis's Woodpecker Willow Flycatcher	Horned Grebe American Bittern Bald Eagle Yellow Rail Long-billed Curlew Marbled Godwit Short-eared Owl Lewis's Woodpecker Red-headed Woodpecker	Bald Eagle Snowy Plover Long-billed Curlew Lewis's Woodpecker Willow Flycatcher Bell's Vireo
<b>BCR 19 CENTRAL MIXED GRASS PRAIRIE</b>	<b>BCR 20 EDWARDS PLATEAU</b>	<b>BCR 21 OAKS AND PRAIRIES</b>
Little Blue Heron	Bald Eagle	Little Blue Heron

Mississippi Kite Bald Eagle Swainson's Hawk Black Rail King Rail Snowy Plover Solitary Sandpiper (nb) Long-billed Curlew Hudsonian Godwit (nb) Marbled Godwit (nb) Buff-breasted Sandpiper (nb) Short-billed Dowitcher (nb) Red-headed Woodpecker Bell's Vireo Henslow's Sparrow Harris's Sparrow (nb)	Long-billed Curlew (nb) Harris's Sparrow (nb) Orchard Oriole	Swallow-tailed Kite Bald Eagle Black Rail (nb) King Rail Long-billed Curlew (nb) Hudsonian Godwit (nb) Buff-breasted Sandpiper (nb) American Woodcock Red-headed Woodpecker Bell's Vireo Swainson's Warbler Henslow's Sparrow (nb) Harris's Sparrow (nb) Orchard Oriole
<b>BCR 22 EASTERN TALLGRASS PRAIRIE</b>	<b>BCR 23 PRAIRIE HARDWOOD TRANSITION</b>	<b>BCR 24 CENTRAL HARDWOODS</b>
Pied-billed Grebe Horned Grebe (nb) American Bittern Least Bittern Black-crowned Night-Heron Bald Eagle Black Rail King Rail Solitary Sandpiper (nb) Whimbrel (nb) Hudsonian Godwit (nb) Marbled Godwit (nb) Red Knot (roselaari ssp.) (nb) Red Knot (rufa ssp.) (a) (nb) Buff-breasted Sandpiper (nb) Short-billed Dowitcher (nb) American Woodcock Black Tern Common Tern Short-eared Owl (nb) Red-headed Woodpecker Acadian Flycatcher Bell's Vireo Wood Thrush Blue-winged Warbler Cerulean Warbler Prothonotary Warbler Kentucky Warbler Henslow's Sparrow Rusty Blackbird (nb)	Pied-billed Grebe Horned Grebe (nb) American Bittern Bald Eagle Yellow Rail King Rail Solitary Sandpiper (nb) Whimbrel (nb) Hudsonian Godwit (nb) Marbled Godwit (nb) Red Knot (roselaari ssp.) (nb) Red Knot (rufa ssp.) (a) (nb) Buff-breasted Sandpiper (nb) Short-billed Dowitcher (nb) American Woodcock Black Tern Common Tern Short-eared Owl (nb) Red-headed Woodpecker Willow Flycatcher Marsh Wren Blue-winged Warbler Golden-winged Warbler Cerulean Warbler Henslow's Sparrow Bobolink Rusty Blackbird (nb)	Bald Eagle Black Rail King Rail Solitary Sandpiper (nb) Buff-breasted Sandpiper (nb) American Woodcock Short-eared Owl (nb) Red-headed Woodpecker Bell's Vireo Sedge Wren Wood Thrush Blue-winged Warbler Cerulean Warbler Swainson's Warbler Kentucky Warbler Henslow's Sparrow LeConte's Sparrow (nb) Painted Bunting Rusty Blackbird (nb)
<b>BCR 25 WEST GULF COASTAL PLAIN/ OUACHITAS</b>	<b>BCR 26 MISSISSIPPI ALLUVIAL VALLEY</b>	<b>BCR 27 SOUTHEASTERN COASTAL PLAIN</b>
Least Bittern Little Blue Heron Swallow-tailed Kite Bald Eagle Yellow Rail (nb) King Rail Solitary Sandpiper (nb) Hudsonian Godwit (nb) Buff-breasted Sandpiper (nb) American Woodcock Red-headed Woodpecker	American Bittern (nb) Least Bittern Swallow-tailed Kite Bald Eagle Yellow Rail (nb) Black Rail King Rail Solitary Sandpiper (nb) Hudsonian Godwit (nb) Marbled Godwit (nb) Buff-breasted Sandpiper (nb)	Red-throated Loon American Bittern (nb) Least Bittern Roseate Spoonbill (nb) Swallow-tailed Kite Bald Eagle Yellow Rail (nb) Black Rail King Rail Limpkin Snowy Plover

<p>Wood Thrush  Cerulean Warbler  Prothonotary Warbler  Worm-eating Warbler  Swainson's Warbler  Louisiana Waterthrush  Kentucky Warbler  Bachman's Sparrow  Henslow's Sparrow (nb)  Painted Bunting  Orchard Oriole</p>	<p>Short-billed Dowitcher (nb)  American Woodcock  Short-eared Owl (nb)  Red-headed Woodpecker  Sedge Wren (nb)  Wood Thrush  Cerulean Warbler  Prothonotary Warbler  Swainson's Warbler  Kentucky Warbler  Henslow's Sparrow (nb)  LeConte's Sparrow (nb)  Painted Bunting  Rusty Blackbird (nb)  Orchard Oriole</p>	<p>Wilson's Plover  American Oystercatcher  Solitary Sandpiper (nb)  Upland Sandpiper (nb)  Whimbrel (nb)  Long-billed Curlew (nb)  Marbled Godwit (nb)  Red Knot (rufa ssp.) (nb)  Semipalmated Sandpiper (Eastern) (nb)  Buff-breasted Sandpiper (nb)  Short-billed Dowitcher (nb)  American Woodcock  Least Tern  Gull-billed Tern  Sandwich Tern  Black Skimmer  Red-headed Woodpecker  Sedge Wren (nb)  Wood Thrush  Blue-winged Warbler  Cerulean Warbler  Prothonotary Warbler  Swainson's Warbler  Kentucky Warbler  Henslow's Sparrow  LeConte's Sparrow (nb)  Nelson's Sharp-tailed Sparrow (nb)  Saltmarsh Sharp-tailed Sparrow (nb)  Seaside Sparrow (c)  Painted Bunting  Rusty Blackbird (nb)</p>
<p><b>BCR 28 APPALACHIAN MOUNTAINS</b></p>	<p><b>BCR 29 PIEDMONT</b></p>	<p><b>BCR 30 NEW ENGLAND/MID-ATLANTIC COAST</b></p>
<p>Bald Eagle  American Woodcock  Red-headed Woodpecker  Olive-sided Flycatcher  Sedge Wren (nb)  Wood Thrush  Blue-winged Warbler  Golden-winged Warbler  Cerulean Warbler  Swainson's Warbler  Louisiana Waterthrush  Kentucky Warbler  Canada Warbler  Henslow's Sparrow  Rusty Blackbird (nb)</p>	<p>Bald Eagle  Black Rail  King Rail  American Woodcock  Short-eared Owl (nb)  Sedge Wren  Wood Thrush  Blue-winged Warbler  Cerulean Warbler  Swainson's Warbler  Kentucky Warbler  Henslow's Sparrow  Rusty Blackbird (nb)</p>	<p>Red-throated Loon (nb)  Pied-billed Grebe  Horned Grebe (nb)  American Bittern  Least Bittern  Snowy Egret  Bald Eagle  Black Rail  King Rail  Wilson's Plover  American Oystercatcher  Solitary Sandpiper (nb)  Lesser Yellowlegs (nb)  Whimbrel (nb)  Hudsonian Godwit (nb)  Marbled Godwit (nb)  Red Knot (rufa ssp.) (nb)  Semipalmated Sandpiper (Eastern) (nb)  Purple Sandpiper (nb)  Buff-breasted Sandpiper (nb)  Short-billed Dowitcher (nb)  American Woodcock  Least Tern  Gull-billed Tern  Black Skimmer  Short-eared Owl (nb)  Red-headed Woodpecker  Sedge Wren</p>

		Wood Thrush Blue-winged Warbler Golden-winged Warbler Worm-eating Warbler Kentucky Warbler Henslow's Sparrow Nelson's Sharp-tailed Sparrow Saltmarsh Sharp-tailed Sparrow Seaside Sparrow Rusty Blackbird (nb)
<b>BCR 31 PENINSULAR FLORIDA</b>	<b>BCR 32 COASTAL CALIFORNIA</b>	<b>BCR 33 SONORAN AND MOJAVE DESERTS</b>
Magnificent Frigatebird American Bittern (nb) Least Bittern Reddish Egret Roseate Spoonbill Swallow-tailed Kite Bald Eagle Yellow Rail (nb) Black Rail King Rail Limpkin Snowy Plover Wilson's Plover American Oystercatcher Solitary Sandpiper (nb) Lesser Yellowlegs (nb) Whimbrel (nb) Long-billed Curlew (nb) Marbled Godwit (nb) Red Knot (rufa ssp.) (nb) Semipalmated Sandpiper (Eastern) (nb) Buff-breasted Sandpiper (nb) Short-billed Dowitcher (nb) American Woodcock (nb) Least Tern Black Skimmer White-crowned Pigeon Mangrove Cuckoo Red-headed Woodpecker Black-whiskered Vireo Yellow Warbler (gundlachi ssp.) Prothonotary Warbler Henslow's Sparrow (nb) Nelson's Sharp-tailed Sparrow (nb) Saltmarsh Sharp-tailed Sparrow (nb) Seaside Sparrow (c) Painted Bunting (nb)	Ashy Storm-Petrel Bald Eagle Yellow Rail (nb) Black Rail Snowy Plover Black Oystercatcher Whimbrel (nb) Long-billed Curlew (nb) Marbled Godwit (nb) Red Knot (roselaari ssp.) (nb) Short-billed Dowitcher (nb) Gull-billed Tern Black Skimmer Xantus's Murrelet Cassin's Auklet Yellow-billed Cuckoo Black Swift Allen's Hummingbird Lewis's Woodpecker Yellow Warbler (brewsteri ssp.) Common Yellowthroat (sinuosa ssp.) Song Sparrow (graminea ssp.) Song Sparrow (maxillaris ssp.) Song Sparrow (pusillula ssp.) Song Sparrow (samuelis ssp.) Tricolored Blackbird Lawrence's Goldfinch	Least Bittern Bald Eagle Black Rail Snowy Plover Long-billed Curlew (nb) Marbled Godwit (nb) Red Knot (roselaari ssp.) (nb) Gull-billed Tern Black Skimmer Yellow-billed Cuckoo Elf Owl Bell's Vireo Lucy's Warbler Yellow Warbler (sonorana ssp.) Lawrence's Goldfinch
<b>BCR 34 SIERRA MADRE OCCIDENTAL</b>	<b>BCR 35 CHIHUAHUAN DESERT</b>	<b>BCR 36 TAMAULIPAN BRUSHLANDS</b>
Bald Eagle Common Black-Hawk Yellow-billed Cuckoo Elf Owl Elegant Trogon Lewis's Woodpecker Northern Beardless-Tyrannulet Bell's Vireo Phainopepla Lucy's Warbler	Bald Eagle Common Black-Hawk Snowy Plover Long-billed Curlew (nb) Yellow-billed Cuckoo Elf Owl Bell's Vireo Yellow Warbler (sonorana ssp.) Red-faced Warbler Varied Bunting	Swainson's Hawk Snowy Plover Solitary Sandpiper (nb) Lesser Yellowlegs (nb) Long-billed Curlew (nb) Gull-billed Tern Red-billed Pigeon Elf Owl Northern Beardless-Tyrannulet Bell's Vireo



Yellow Warbler (sonorana ssp.) Red-faced Warbler Varied Bunting	Painted Bunting	Varied Bunting Painted Bunting Audubon's Oriole
<b>BCR 37 GULF COAST PRAIRIE</b>	<b>BCR 67 HAWAII</b>	<b>PUERTO RICO AND VIRGIN ISLANDS</b>
American Bittern Least Bittern Reddish Egret Swallow-tailed Kite Bald Eagle Yellow Rail (nb) Black Rail King Rail Snowy Plover Wilson's Plover American Oystercatcher Solitary Sandpiper (nb) Lesser Yellowlegs (nb) Upland Sandpiper (nb) Whimbrel (nb) Long-billed Curlew Hudsonian Godwit (nb) Marbled Godwit (nb) Red Knot (roselaari ssp.) (nb) Red Knot (rufa ssp.) (a) (nb) Buff-breasted Sandpiper (nb) Short-billed Dowitcher (nb) American Woodcock (nb) Least Tern Gull-billed Tern Sandwich Tern Black Skimmer Short-eared Owl (nb) Sedge Wren (nb) Prothonotary Warbler Swainson's Warbler Henslow's Sparrow (nb) LeConte's Sparrow (nb) Nelson's Sharp-tailed Sparrow (nb) Seaside Sparrow (c) Painted Bunting	Laysan Albatross Black-footed Albatross Christmas Shearwater Band-rumped Storm-Petrel Tristram's Storm-Petrel Bristle-thighed Curlew (nb) Short-eared Owl	West Indian Whistling-Duck White-cheeked Pintail Masked Duck Ruddy Duck (jamaicensis ssp.) Audubon's Shearwater Masked Booby Brown Booby Red-footed Booby Magnificent Frigatebird Least Bittern American Flamingo Black Rail Yellow-breasted Crake Caribbean Coot Limpkin Snowy Plover Wilson's Plover American Oystercatcher Red Knot (rufa ssp.) (nb) Semipalmated Sandpiper (Eastern) (nb) White-crowned Pigeon

## Attachment B. NAWCA Priority Bird Crosswalk List

NAWCA Priority Bird List for MBTA Gulf Spill Settlement Projects
American Bittern (mid-Continent*)
American Black Duck
American Oystercatcher (FL & Gulf Coast)
American Wigeon
Audubon's Shearwater
Bachman's Sparrow (mid-Continent)
Bald Eagle (mid-Continent)
Black Rail (mid-Continent)
Black Skimmer (Gulf Coast only)
Black Tern (mid-Continent)
Black-crowned Night-Heron (Gulf Coast only)
Buff-breasted Sandpiper (mid-Continent)
Canvasback
Common Tern (Great Lakes population)
Greater Scaup
Gull-billed Tern (Gulf Coast only)
Henslow's Sparrow (mid-Continent)
Horned Grebe (mid-Continent)
Hudsonian Godwit (mid-Continent)
Kentucky Warbler (mid-Continent)
King Rail (mid-Continent)
Least Bittern (mid-Continent)
Least Tern (mid-Continent)
Le Conte's Sparrow (mid-Continent)
Lesser Scaup
Lesser Yellowlegs (pops. East of Rockies)
Limpkin (Gulf Coast only)
Little Blue Heron (mid-Continent)
Long-billed Curlew (pops. East of Rockies)
Mallard (mid-Continent)
Mangrove Cuckoo (Gulf Coast only)
Marbled Godwit (pops. East of Rockies)
Marsh Wren (mid-Continent)
Mottled Duck
Nelson's Sparrow (mid-Continent)
Northern Pintail (pops. East of Rockies)
Painted Bunting (mid-Continent)
Pied-billed Grebe (mid-Continent)
Piping Plover (Great Lakes and Great Plains pops.)
Prothonotary Warbler (mid-Continent)
Red Knot (C.c. rufa and C.c. roseaari)
Reddish Egret (Gulf Coast only)
Redhead
Red-throated Loon (mid-Continent)
Ring-necked Duck (mid-Continent)
Roseate Spoonbill (Gulf Coast only)

Rusty Blackbird (mid-Continent)
Saltmarsh Sparrow (Gulf Coast only)
Sandwich Tern (Gulf Coast only)
Seaside Sparrow (Gulf Coast only)
Sedge Wren (mid-Continent)
Semipalmated Sandpiper (mid-Continent)
Short-billed Dowitcher (mid-Continent)
Snowy Egret (mid-Continent)
Snowy Plover (Interior U.S. and Gulf Coast populations)
Solitary Sandpiper (mid-Continent)
Swainson's Warbler (mid-Continent)
Swallow-tailed Kite (Gulf Coast only)
Whimbrel (mid-Continent)
Wilson's Plover (Gulf Coast and south)
Worm-eating Warbler (mid-Continent)
Yellow Rail (pops. East of Rockies)
Yellow-billed Cuckoo (mid-Continent)

\*mid-Continent = Central and Mississippi Flyways

Oiled

C. NAWCA Priority Gulf Spill Funding Zones

