

Woodcock Trail

Length: 0.3 Miles

A short paved loop trail that is handicap accessible and contains several interpretive panels that provide information on various native plants and animals. This trail has a particular focus on the requirements for our protected species, the American woodcock.



Charlotte Trail

Length: 0.7 Miles

A short path through flowering fields and forest. Panels are located throughout the trail that provide interpretive information on local plants and animals. This trail can be a loop or connected with other nearby trails.



Greg's Pond Trail

Length: 1.0 Mile

This trail contains grassy pathways and elevated wooden walkways for wet areas. This trail passes by Greg's Pond, great for wildlife viewing. The low canopy and overhanging brush will be sure to keep you cool.



Raven Trail

Length: 1.4 Miles

This moderate trail has hilly terrain, high dense canopy cover, and a dense understory the further you go through the loop. Small panels that cover local plants are scattered throughout the trail. This is a great option if you're looking for something more than a brisk walk.



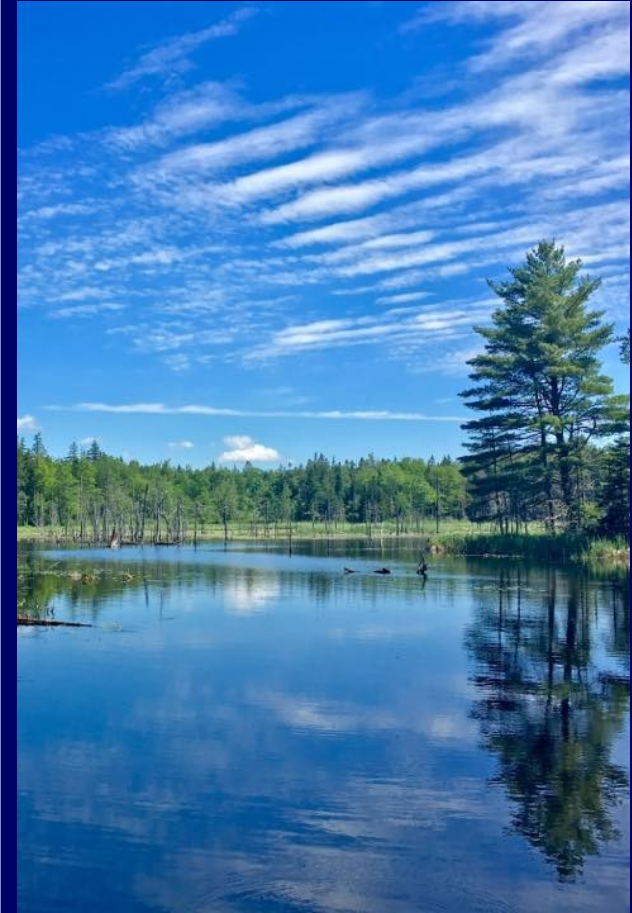
Credits: Front Photo– Keith Ramos, Back Photos– Woodcock (Dave Small), All others (Logan Sauer)

Moosehorn National Wildlife Refuge



Headquarters

Trail Map and Descriptions

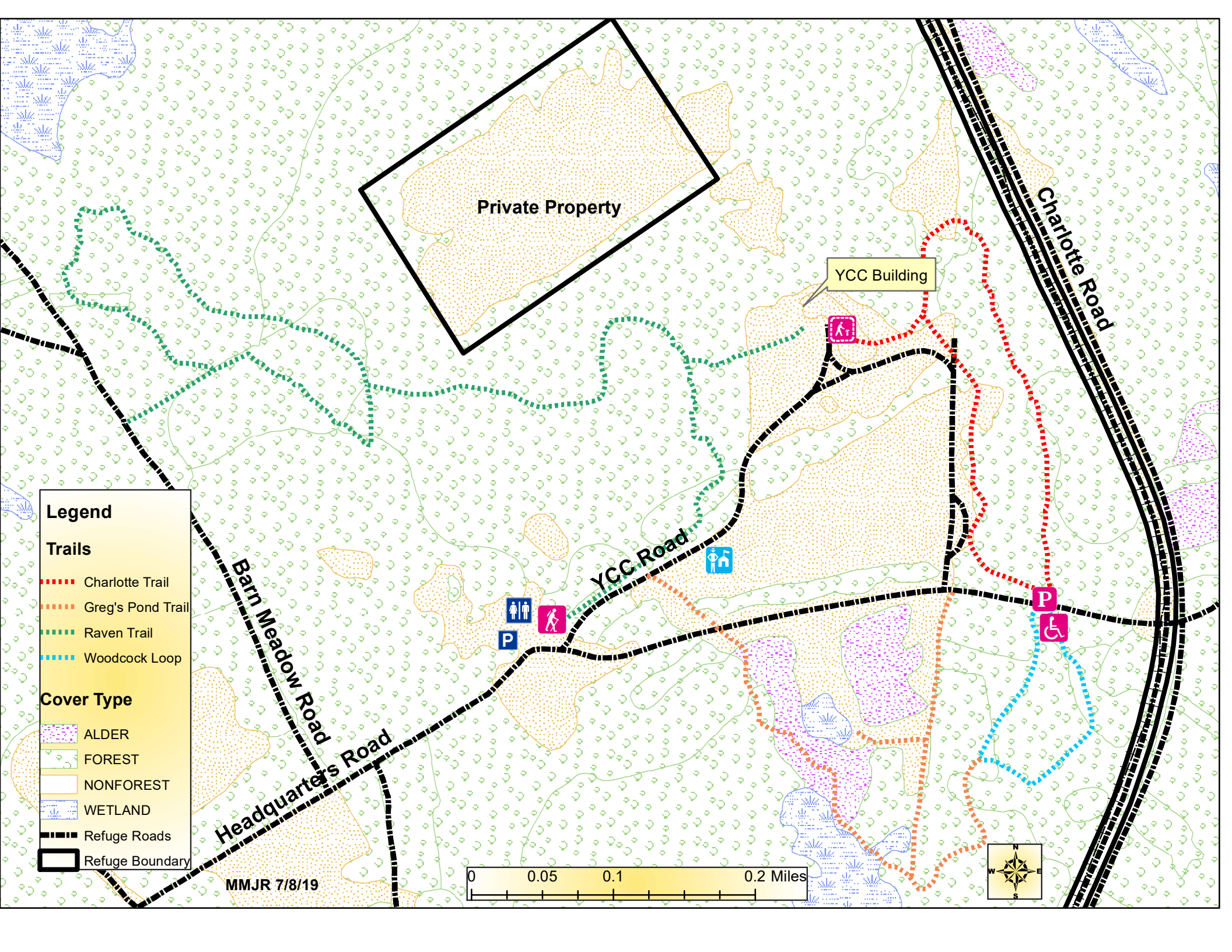


103 Headquarters Road

Baring, Maine 04694

(207) 454-7161

www.fws.gov/refuge/moosehorn/



Private Property

YCC Building

Charlotte Road

YCC Road

Barn Meadow Road
Headquarters Road

Legend

Trails

- Charlotte Trail
- Greg's Pond Trail
- Raven Trail
- Woodcock Loop

Cover Type

- ALDER
- FOREST
- NONFOREST
- WETLAND

Refuge Roads

Refuge Boundary

MMJR 7/8/19

