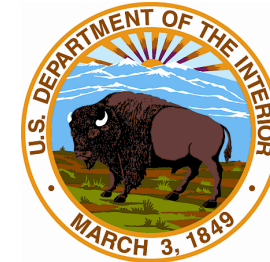


Monomoy National Wildlife Refuge



Waterfowl Hunting Program



Rules and Regulations:

Waterfowl hunters must follow state of MA regulations— including seasons, time of day, and bag limits— along with Title 50 of the Code of Federal Regulations and the following refuge-specific regulations:

- Waterfowl hunting for duck, goose and coot is permitted **offshore** (west) of South Monomoy Island.
- **No hunting shall occur on refuge islands or inland waters.** Waterfowl hunting is permitted in **offshore** sections of Nantucket Sound (see map).
- A refuge-specific hunting permit and fee is required *only* for commercial hunting guides.
- The use of dogs is permitted for retrieving game.
- The refuge is a carry-in/carry-out, leave-no-trace facility. All trash must be removed.
- Seals are protected under the Marine Mammal Protection Act. For your safety and theirs, keep at least 150 feet away from seals at all times; if your behavior changes theirs, you are too close.
- The Monomoy Islands are federal Wilderness: wheeled carts and motorized equipment are prohibited above Mean Low Water.
- Overnight use, camping, and camp fires are prohibited.
- Use of refuge-owned moorings is prohibited.

Thank You!

For more information:

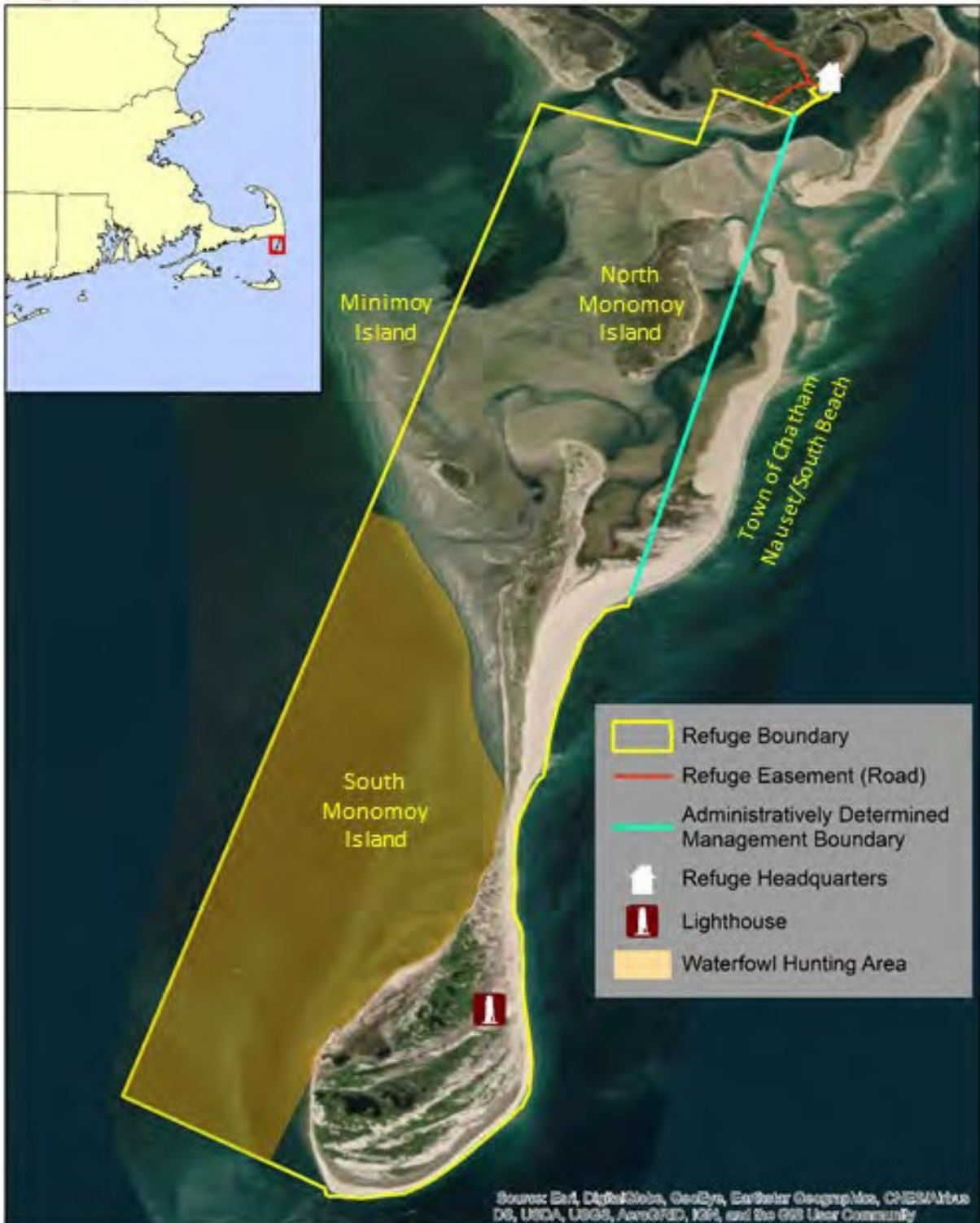
Refuge Manager: 508-380-0857

Full hunt plan: <https://www.fws.gov/nwrs/threecolumn.aspx?id=6442453265>

Additional regulations are in effect. Contact the refuge office for details.



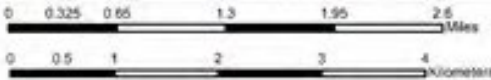
Monomoy National Wildlife Refuge



- Refuge Boundary
- Refuge Easement (Road)
- Administratively Determined Management Boundary
- Refuge Headquarters
- Lighthouse
- Waterfowl Hunting Area

Source: Esri, DigitalGlobe, GeoEye, Earthstar Geographics, CNES/Airbus DS, USDA, USGS, AeroGRID, IGN, and the GIS User Community

This map is designed for refuge management. It is not intended for use as a bird hunting or as a representation of land for conveyance or tax purposes. Background photo from Town of Chatham, Massachusetts (2010).



Additional regulations are in effect. Contact the refuge office for details.