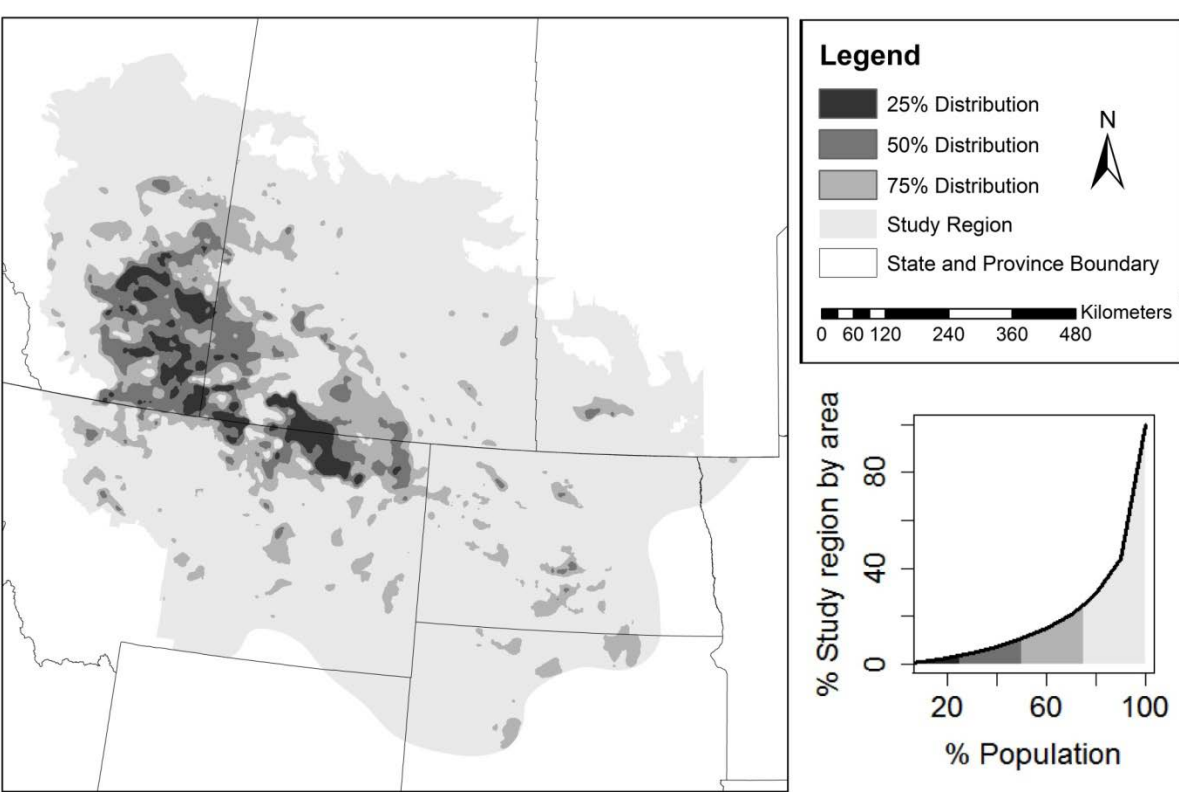


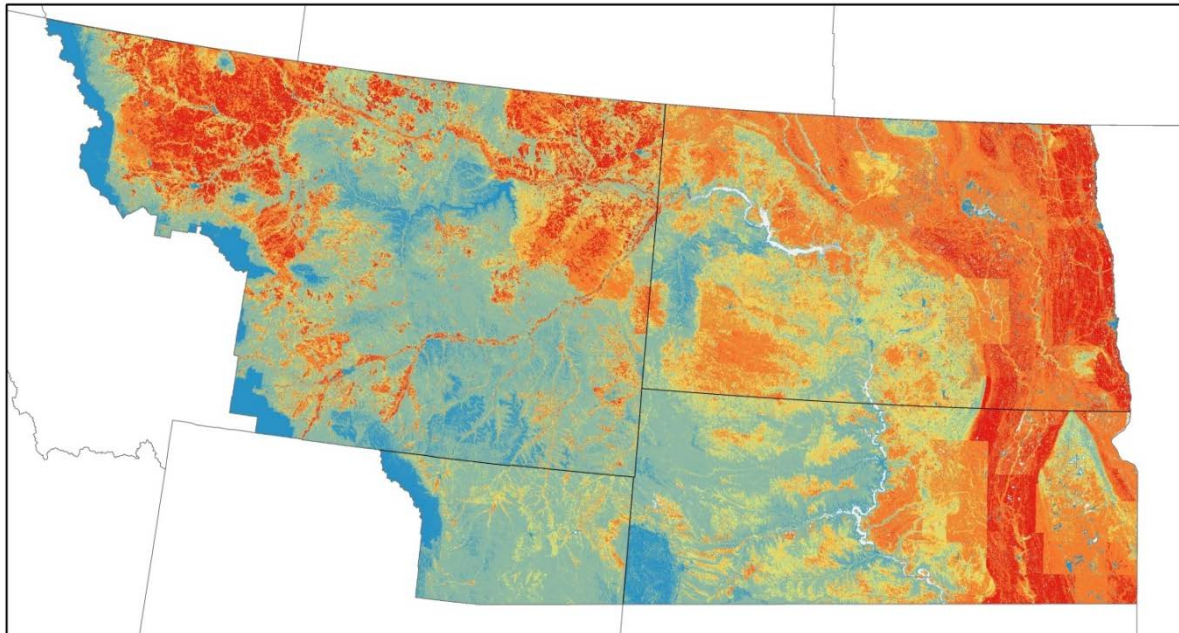
# Reducing uncertainty by quantifying risk

## Sprague's Pipit example



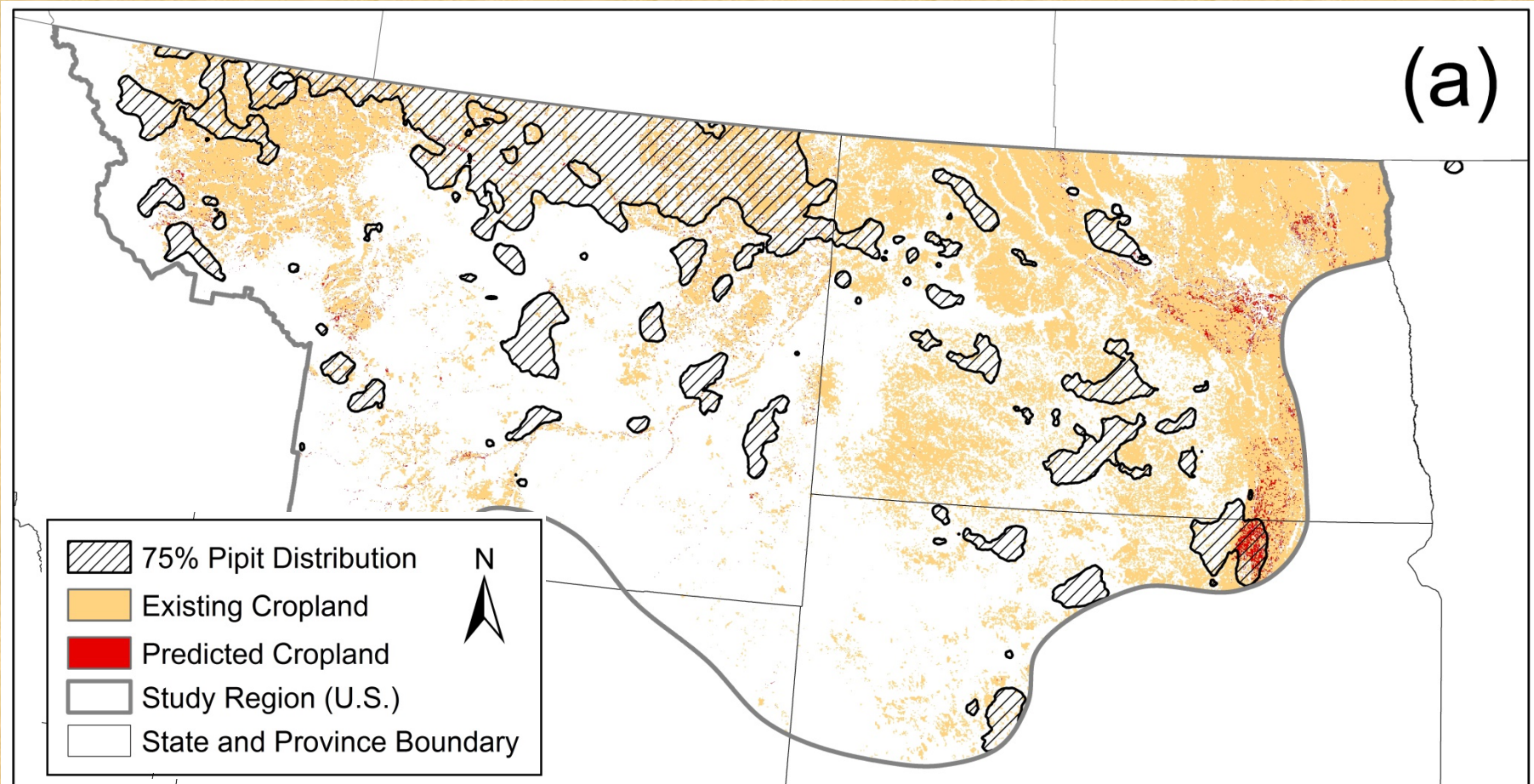


Combining  
population  
models with  
threats to  
quantify risk





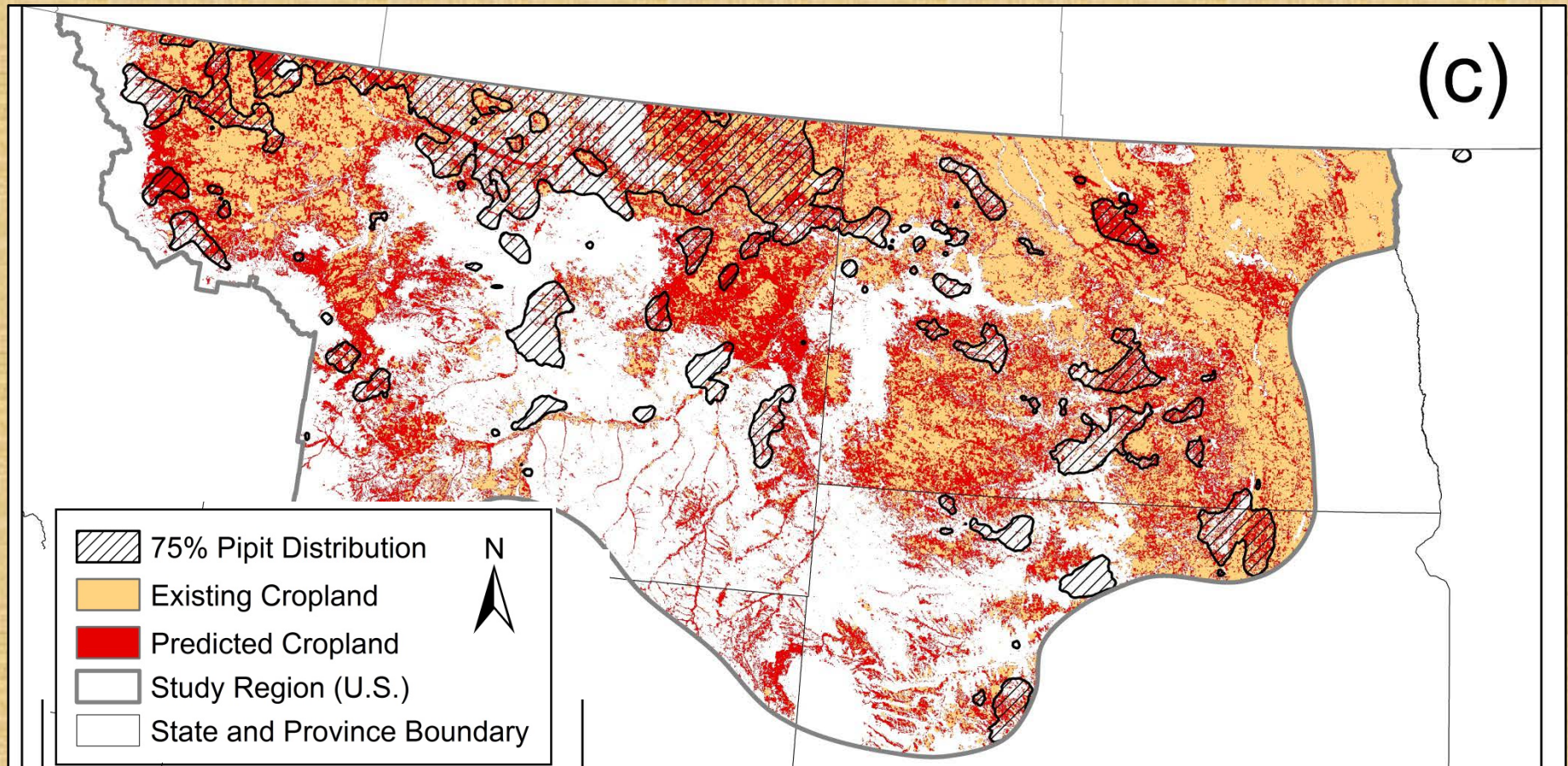
# Scenario (a): background growth 2% population loss



Scenario	Tillage Risk Cutoff	New Crop Acres
a	0.98	1.2 million



# Scenario (c): extreme growth 30% population loss



Scenario	Tillage Risk Cutoff	New Crop Acres
c	0.3	30.9 million