

Company Ranch—Anadarko Corp. Section 23 Albert Creek project

Main ideas:

1. Provide more reliable livestock water sources so that the lessees' NRCS grazing plan can work.
2. Restore Albert Creek to improve natural subirrigation and forage production and riparian habitat for sage grouse, mule deer, and other wildlife.

Legal: T18 R117W NE ¼ NE ¼ Sec. 23 & SE ¼ SE ¼ Sec. 23

Land ownership: Anadarko

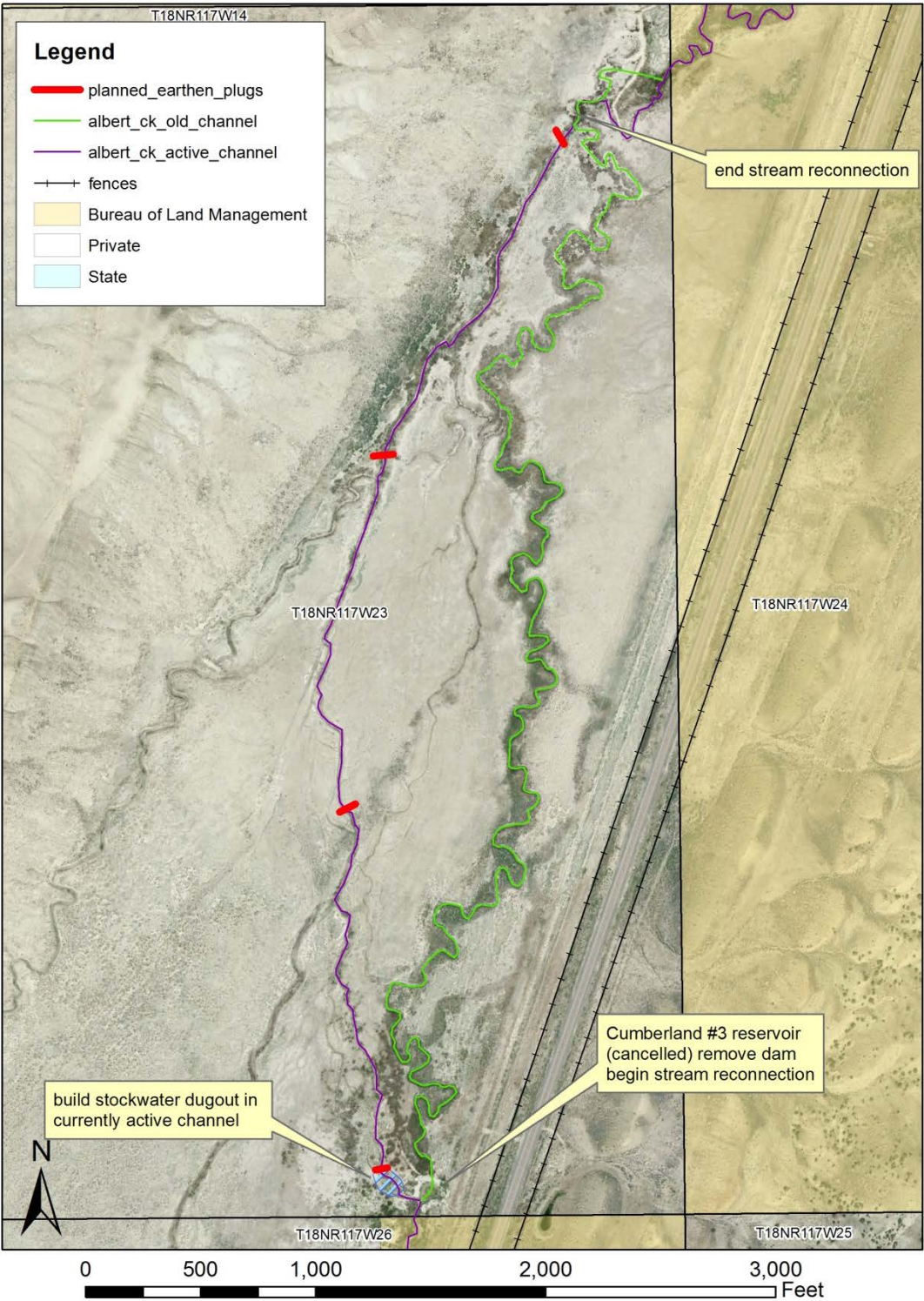
Description: The Cumberland #3 reservoir is a dam-dugout in the North Pasture located in the channel of Albert Creek. It originally had a 1978 water right filed by Broadbent and Union Pacific that has since been cancelled by the State Engineers Office. The reservoir is adjacent to a stock tank connected to the Cumberland #29 well on the east side of Hwy. 189. The reservoir is not in good condition and is mostly silted in. Because of the large upstream watershed, high peak flows, and lack of a principal spillway the reservoir's emergency spillway has become the new Albert Creek channel, isolating 10,200 feet of Albert Creek and replacing it with 5,500 feet of straighter, steeper channel. A significant section of the currently active channel is located in an old irrigation ditch that the stream "found". The plan would include removing the old Cumberland #3 dam and returnin Albert Creek to its historic channel. The currently active channel is not well-vegetated and has severely eroding banks. Besides reducing bank erosion, reconnecting Albert Creek to its historic channel will enhance natural subirrigation by running water into a streambed that is 0.5 to 2.5 feet higher than the currently active streambed.

Actions:

- Remove Cumberland #3 dam and install small rock-riffle grade control at the top and bottom ends of the reconnected reach of Albert Creek.
- Build a stockwater dugout in the currently active Albert Creek channel, which will become an inactive channel.
- Fill the currently active channel with earthen "plugs" (small dams) at 4 locations to prevent large flood flows from reactivating the channel.

A complete survey of this restoration project has been completed by the Partners for Fish and Wildlife Program and on-site construction management would be performed by Partners for Fish and Wildlife. Environmental permits (i.e. NEPA, Cultural Resources, Clean Water Act 404) will be secured by Partner for Fish and Wildlife on behalf of the landowner and lessees.

Proposal map



March 2014 photos



Cumberland #3 reservoir (cancelled) with Albert Creek cutting a new channel through the spillway.



Old Albert Creek channel directly below Cumberland #3 dam. Note more vegetated, gently sloping banks and sinuous stream pattern than currently active channel.