



LOWER SNAKE RIVER COMPENSATION PLAN



FISH FOR THE FUTURE

MATT HOW GRAPHIC - USFWS



Columbia

SOUTH FORK STEELHEAD - IDFG

WHAT'S BEEN HAPPENING IN LSRCP

MARCH 2021

Lower Snake River Compensation Plan

FISH FOR THE FUTURE

COORDINATOR'S CORNER



If I fished only to capture, my fishing trips would have ended long ago.
-Zane Grey

Front cover picture is a LSRCP Photo Contest Flickr upload - those B steelhead always bring a smile to my face. Nice work populating the LSRCP Flickr site. There's plenty of room left and we'll be picking a photo of year for the LSRCP Annual Meeting April 27-29 - so don't forget to submit.

I hope all of you are having a great Spring. It's always great to see our smolts getting ready for their migration to the Pacific. The next Fish for the Future leaving our care and headed on their journey. Fingers crossed that the snowpack comes off on an average timing and we get some good corridor conditions for this cohort.

We've got some great talks lining up for the virtual LSRCP meeting. We'll be using GoTo Meeting as the platform and sending out a final draft Agenda soon. For speakers, please consider recording your presentation and sending ahead of time so you can answer questions during the talks and stick to the allotted timeslots. As with all virtual meetings, we'll be expecting participants to duck in and out as interest and schedules allow.

We spent some time fishing on the warmer days of March. I reconnected with some old stuffed trout recipes from years gone by. The kids feel obliged to keep fish when they catch them, and I felt obliged to leave the heads on.

Fun article if you get time about why records are important - someone might be dragging up your scale sheets in 100 years:
<https://www.biographic.com/scales-of-reference/>

Have fun out there!

. - Nate

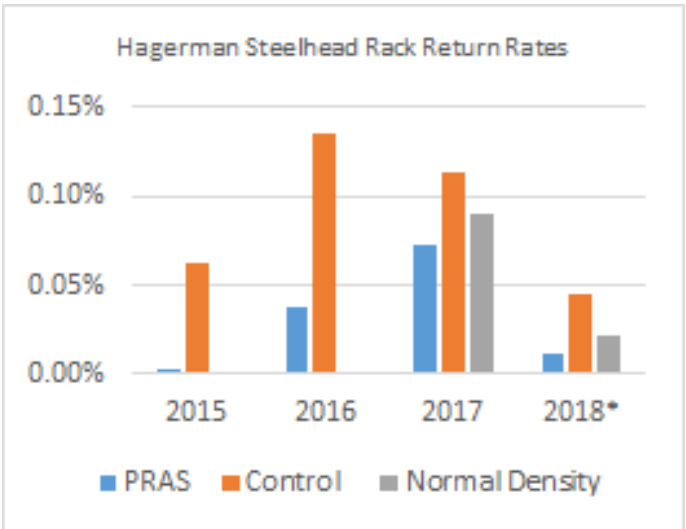


STUFFED AND GRILLED TROUT

HAGERMAN NFH PRAS

We got a chance to line up some steelhead out of the Magic Valley facilities in March just prior to release. Preliminary data from the Partial Recirculating Aquaculture System (PRAS) at Hagerman NFH is revealing a trend of PRAS fish to not migrate as well, and return at lower rates.

Despite normal fin wear from warm water and restricted diets, the smolts look in good shape for their migration journey. We sacrificed a few fish to compare fat levels in the gut and nothing stood out between Niagara, Magic Valley, Hagerman Raceway, and Hagerman PRAS smolts. A good looking BY20 group headed out!





HAGERMAN PRAS SMOLTS

LOW DENSITIES?

You'll see more of the Hagerman steelhead PRAS data at the upcoming LSRC meeting, but this dataset is worth sharing as a "teaser" to attend. Alex LeCheminant, IDFG, assembled the adult return rates from the PRAS (DI=0.20), low density control (DI=0.20) and a normal density group (DI=0.24). Keep in mind these return rates are low from the "total return" but are representative of each group. The results are startling in two ways:

1. PRAS fish are returning at much lower numbers than raceway reared steelhead
2. Low density (0.20) reared smolts are returning adults in higher numbers per raceway than normal density fish

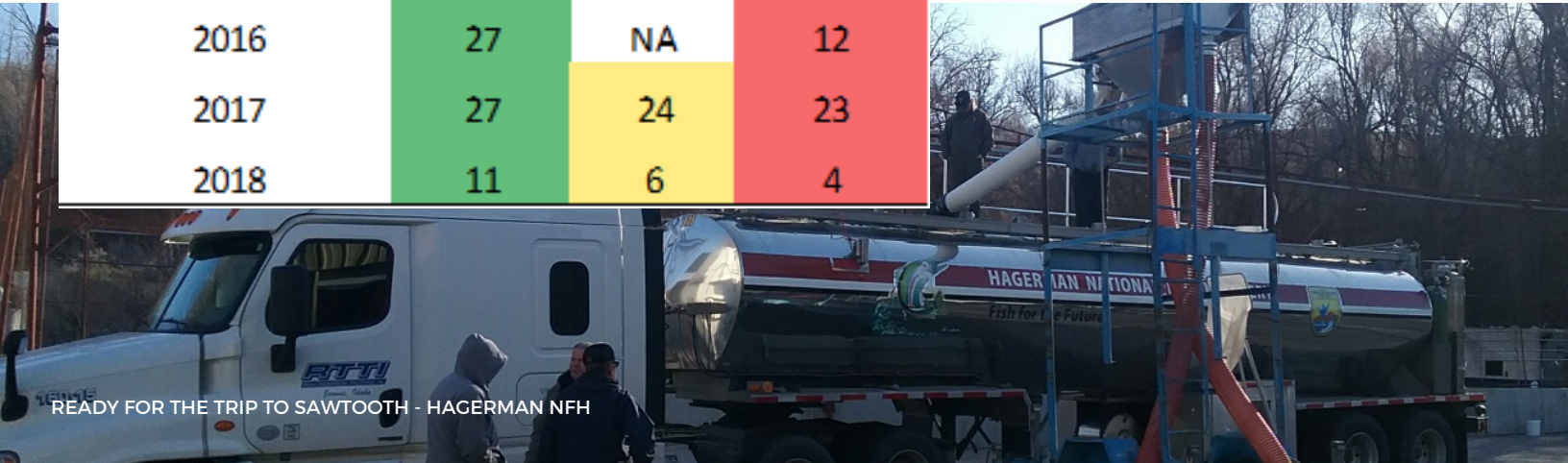
Now of course, there are lots of caveats here still to explore, but an example where low densities are outperforming to produce more adults - a quantification of the quality versus quality conundrum!



PRAS HARVEST - HAGERMAN NFH

Steelhead adults returned per rearing vessel, Hagerman NFH

Release Year	Control Raceways (22,500) DI = 0.20	Normal Density (27,000) DI = 0.24	PRAS Tanks (31,230) DI = 0.20
2015	14	NA	1
2016	27	NA	12
2017	27	24	23
2018	11	6	4



READY FOR THE TRIP TO SAWTOOTH - HAGERMAN NFH

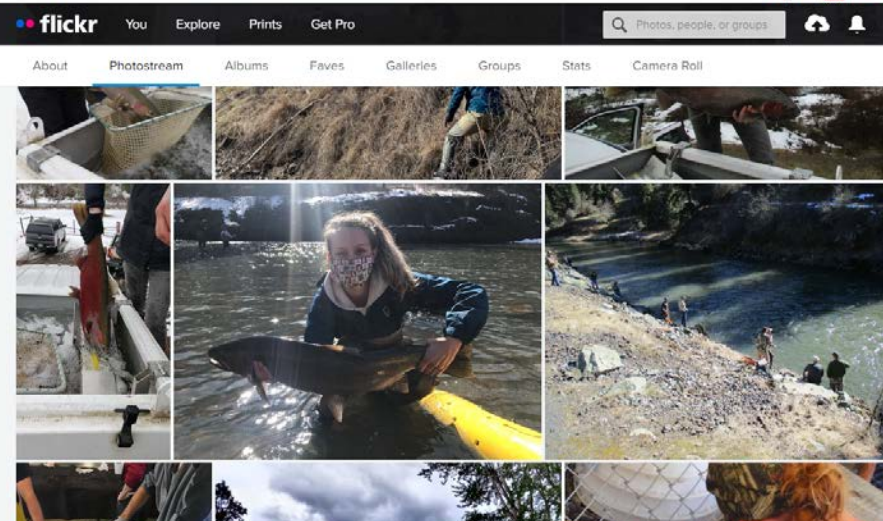


PHOTO CONTEST

LSRCP Photo Contest!

Shameless re-run and plug for new photos for the halls of the LSRCP office. We need YOUR help!

Upload your best shots of Fish, Facilities, People, and Videos to:

www.flickr.com

Go to login and use:

Login: LSRCP2021@gmail.com

Password: Fish4Future!

Please add a description in the title, i.e. Location (ex: Irrigon), species (ex: Summer Chinook), and employee (ex: Deb Eddy). Also in the tagline, please include Agency and photo credit (ex: IDFG/Brian Thompson).

Ideally, high resolution photos are best for printing. Most of your new smart phones should do just fine!

Submissions are due by April 27th, 2021. Grand Prize includes a canvas print of your stations photo and some surprise SWAG items. Grand Prize Winner will be announced at the LSRCP Virtual Meeting.



SOUTH FORK - IDFG



RAPID RIVER - TARA GARRISON - PSMFC



RAPID RIVER - TARA GARRISON - PSMFC

EMPLOYEE SPOTLIGHT



Deb Eddy

Deb Eddy announced her retirement this month and March 31st marked her last day with ODFW.

Deb arrived in La Grande and in the Snake River Basin in January, 1995 from ODFW headquarters. She had been working with ODFW's Hatchery Management Information System. Originally, she helped train all of ODFW's hatcheries on how to use the computer system (which wasn't very popular!). By 1996 she had transitioned into working almost full-time for ODFW Fish Research and then they just made her part of the LSRCP staff. Deb worked a lot on the NE Oregon captive brood programs. Deb has 40 years in with ODFW, many specifically working with hatcheries, and 25 of those as part of the LSRCP. She essentially has shepherded and mentored scores of ODFW seasonal and permanent staff throughout her career. Deb truly loves her job, which is what makes her retirement so tough for her she says it will be hard to give up working with all the fantastic people she's been privileged to know.

Congratulations Deb!



U.S. Fish and Wildlife Service
Lower Snake River Compensation Plan
Salutes

Deb Eddy

For significant contributions and support to the
Lower Snake River Compensation Plan Program in
the State of Oregon.

Your career has significantly improved the fishery
resources for anglers, inspired your peers, and helped
imperiled salmon and steelhead in the
Snake River Basin.

March 31, 2021

RETIREMENT IS THE
BEGINNING OF THE NEXT
JOURNEY.....