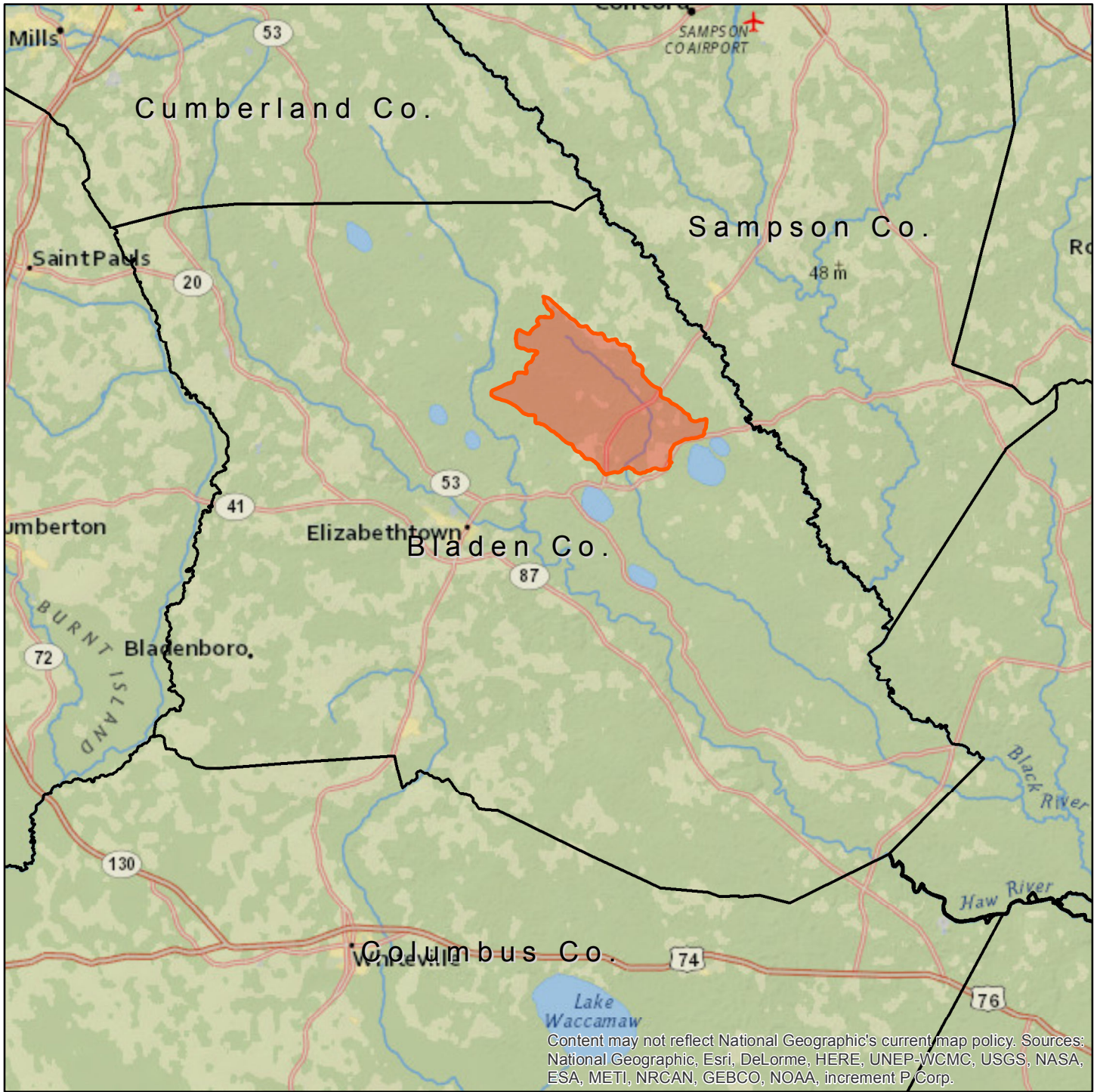



U.S. Fish & Wildlife Service


Northern Long-Eared Bat Consultation Areas

BLADEN County

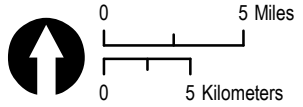


Content may not reflect National Geographic's current map policy. Sources: National Geographic, Esri, DeLorme, HERE, UNEP-WCMC, USGS, NASA, ESA, METI, NRCAN, GEBCO, NOAA, increment P Corp.

 North Carolina County Boundary

 Watersheds with Known NLEB Winter Roost trees

If your project falls within the red areas identified in BLADEN County, please contact the USFWS Raleigh Field Office.



USFWS Ecological Services
Raleigh, North Carolina
Map Date: 12/15/2016

