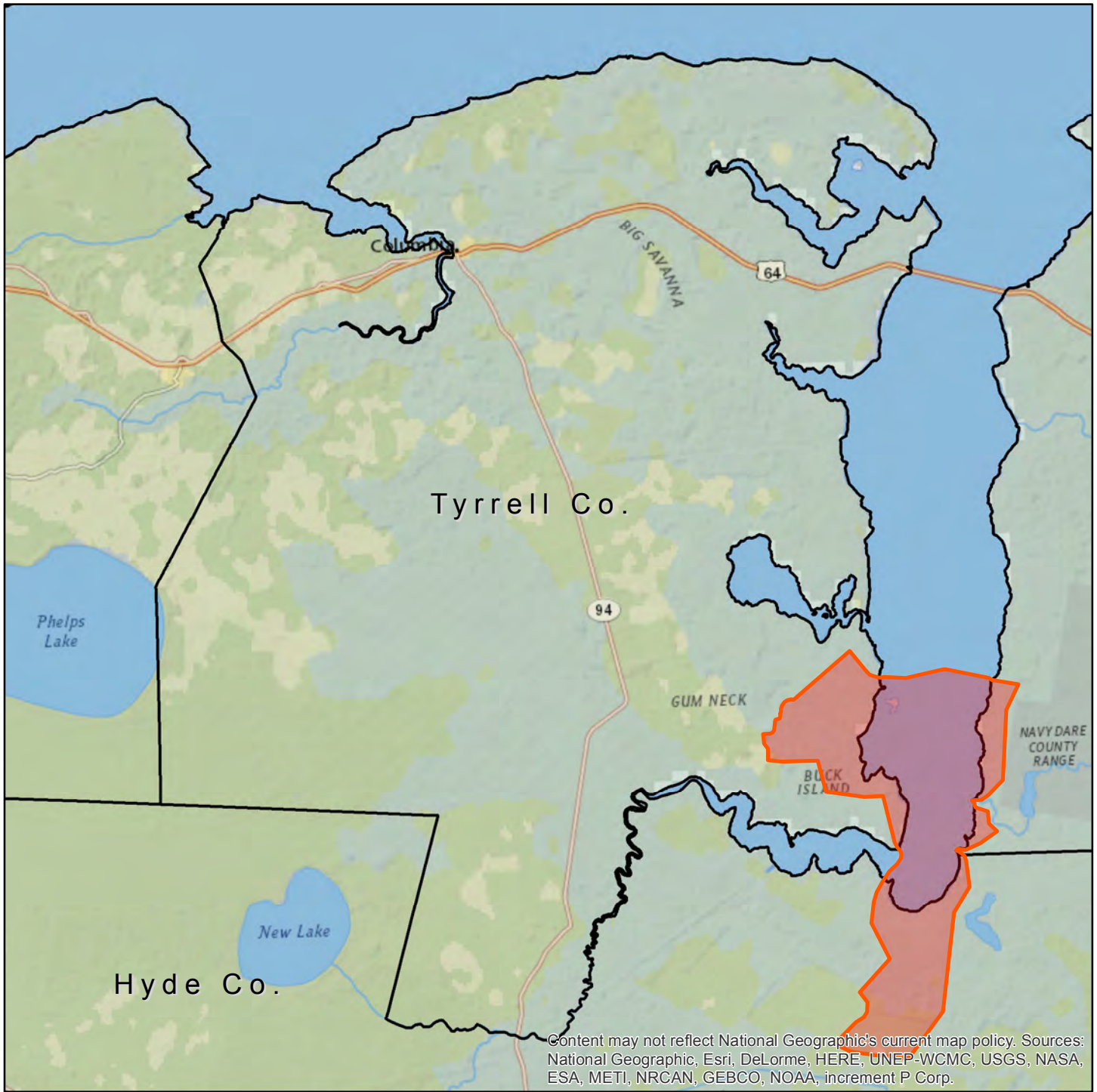



**U.S. Fish & Wildlife Service**


**Northern Long-Eared Bat Consultation Areas**

TYRRELL County




Content may not reflect National Geographic's current map policy. Sources: National Geographic, Esri, DeLorme, HERE, UNEP-WCMC, USGS, NASA, ESA, METI, NRCAN, GEBCO, NOAA, increment P Corp.

 North Carolina County Boundary

 Watersheds with Known NLEB Winter Roost trees

If your project falls within the red areas identified in TYRRELL County, please contact the USFWS Raleigh Field Office.

 0 5 Miles  
0 5 Kilometers

USFWS Ecological Services  
Raleigh, North Carolina  
Map Date: 2/7/2017

