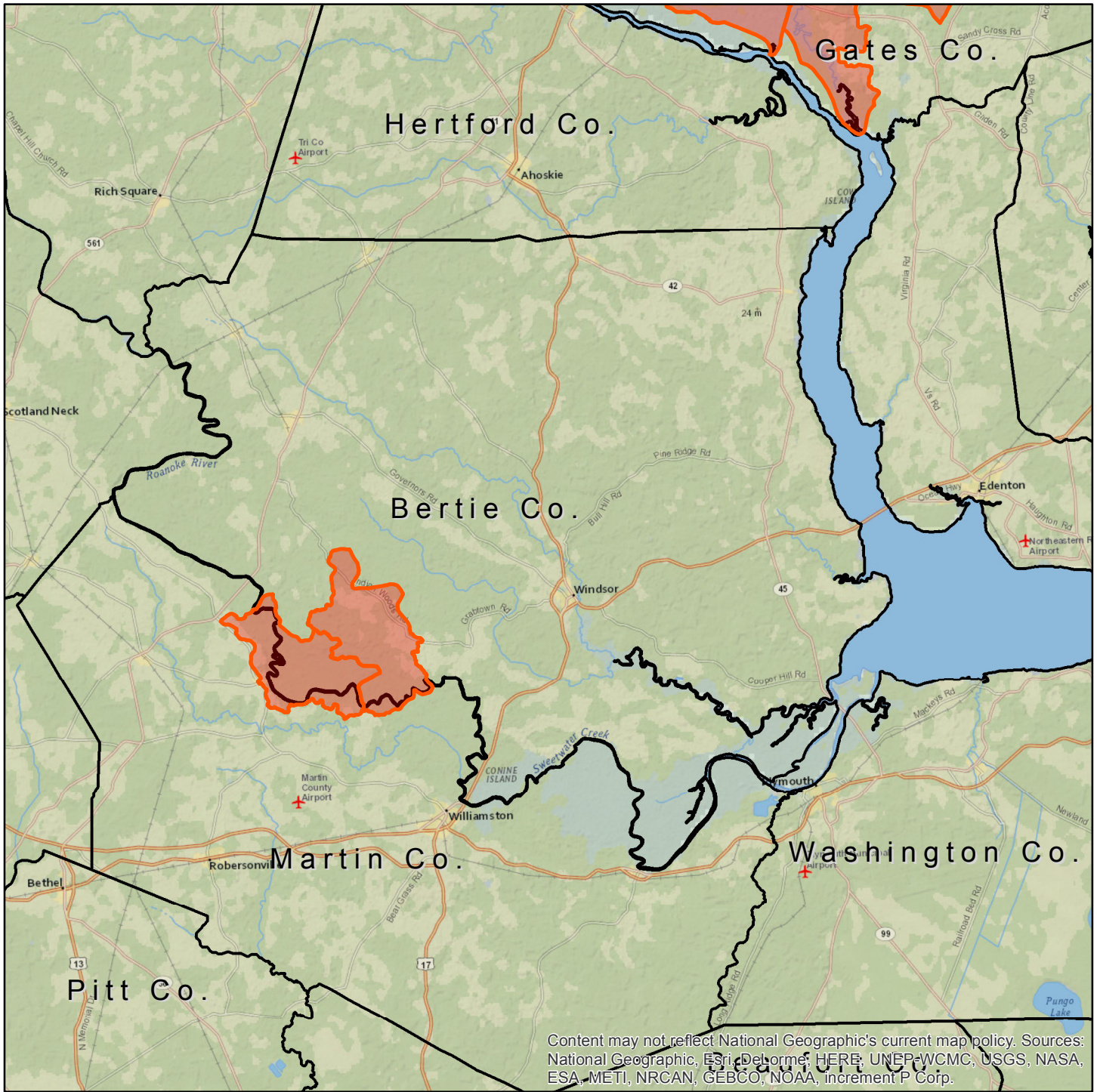




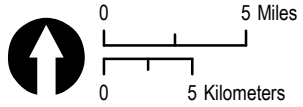
**U.S. Fish & Wildlife Service**  
**Northern Long-Eared Bat Consultation Areas**  
**BERTIE County**



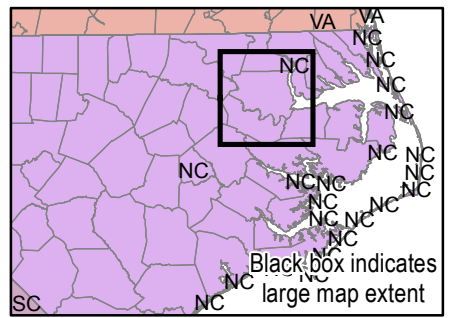
Content may not reflect National Geographic's current map policy. Sources: National Geographic, Esri, DeLorme, HERE, UNEP-WCMC, USGS, NASA, ESA, METI, NRCAN, GEBCO, NOAA, increment P Corp.

 North Carolina County Boundary  
 Watersheds with Known NLEB Winter Roost trees

**If your project falls within the red areas identified in BERTIE County, please contact the USFWS Raleigh Field Office.**



USFWS Ecological Services  
 Raleigh, North Carolina  
 Map Date: 12/3/2018



Black box indicates large map extent