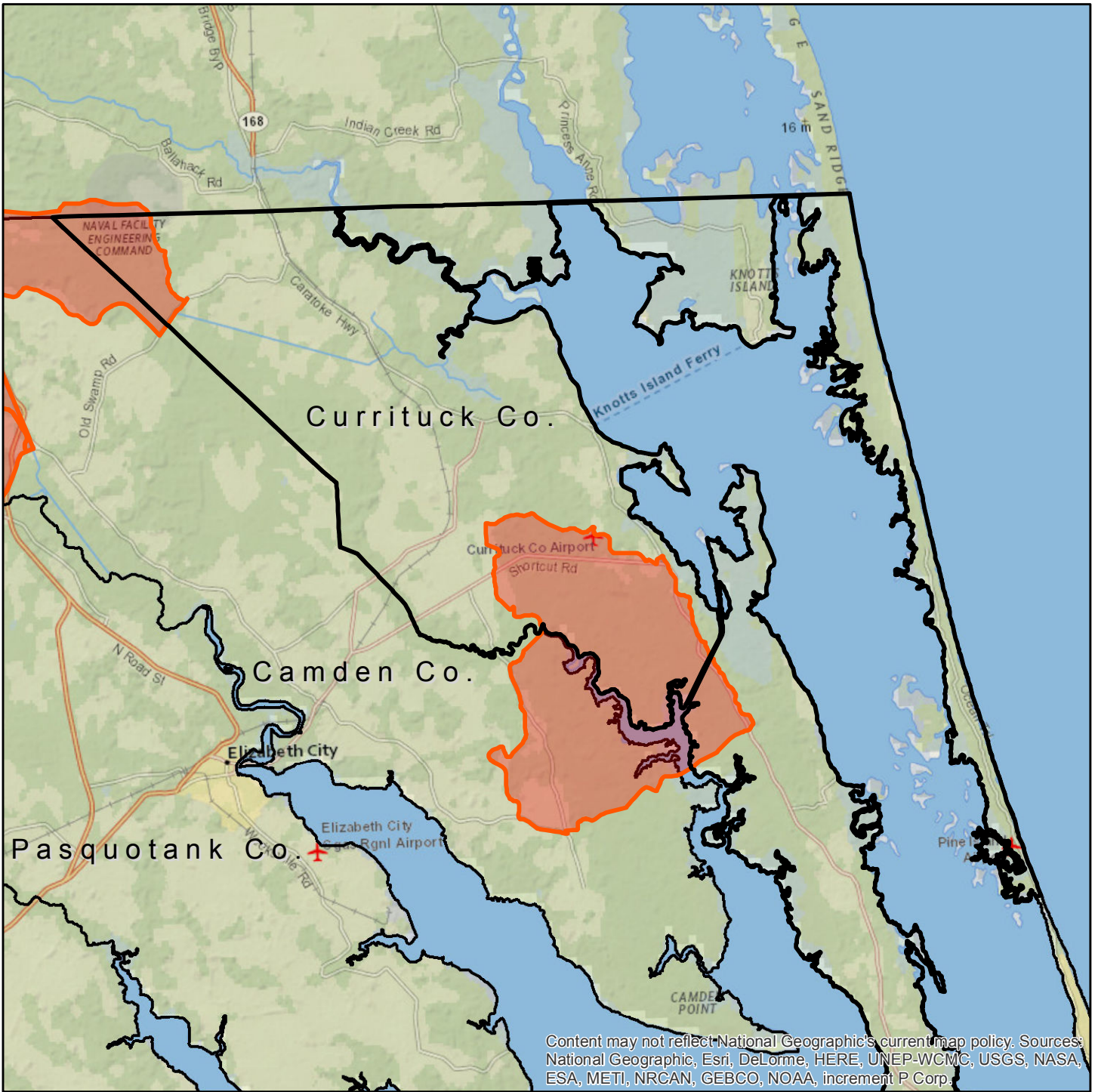




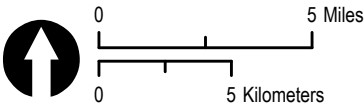
U.S. Fish & Wildlife Service
Northern Long-Eared Bat Consultation Areas
CURRITUCK County



Content may not reflect National Geographic's current map policy. Sources: National Geographic, Esri, DeLorme, HERE, UNEP-WCMC, USGS, NASA, ESA, METI, NRCAN, GEBCO, NOAA, increment P Corp.

North Carolina County Boundary
 Watersheds with Known NLEB Winter Roost trees

If your project falls within the red areas identified in CURRITUCK County, please contact the USFWS Raleigh Field Office.



USFWS Ecological Services
 Raleigh, North Carolina
 Map Date: 4/12/2016

