



This goose, designed by J.N. "Ding" Darling, is the symbol of the National Wildlife Refuge System.

U.S. Fish & Wildlife Service

Lost Trail National Wildlife Refuge

Authorized Public Uses

Welcome

Lost Trail National Wildlife Refuge (NWR) was the 519th refuge inducted into the National Wildlife Refuge System. We invite you to enjoy wildlife observation, wildlife photography, environmental education, hunting, and access to adjacent Weyerhaeuser Timber Company (WTC) and State lands. Public use and access is permitted as described in this leaflet.

General Information

This 9,225-acre Refuge, established in 1999, is managed for the benefit of migratory birds and resident wildlife. Portions of the Refuge boundary are shared with WTC, the Montana Department of Natural Resources and Conservation (DNRC), and private landowners.

Driving Directions

The Refuge can be reached via Highway 2 by driving west from Kalispell, and going approximately 20 miles to Marion. Turn right at Marion onto Pleasant Valley Road. Drive approximately 1.3 miles and the blacktop road will fork. Stay right; continue on Pleasant Valley Road for an additional 16.5 miles. Refuge headquarters is located north of Pleasant Valley Road.

Parking on the Refuge

- Parking is allowed in designated parking areas only, as identified on the map.
- Blocking roads or gates is prohibited.

State Land

Four parcels of State land within the Refuge boundary are owned and managed by the DNRC. These parcels are leased by the Refuge, but they are open to public recreation according to State law. A Recreational Use License is required and can be obtained from any authorized Montana Fish, Wildlife and Parks license agent.

Authorized Public Uses

- Wildlife observation, non-commercial photography, hunting, hiking, cross-country skiing, and snowshoeing are allowed on the Refuge, except in the area that is closed seasonally (as described below).
- *The closed area, as shown on the map, is closed to all public access from September 1 through December 10.*
- Motorized vehicle use is allowed on the North 1019 Road, Orr Road, Pleasant Valley Road and the Dahl Lake Road (except during the September 1 – December 10 closure).
- Mountain bike (non-motorized) and horseback riders must remain on Refuge roads as shown on the map. Horse or pack stock users must use only weed-free hay.
- Regulations and further information are available at the Refuge headquarters.

To Protect You and the Refuge

- Persons possessing, transporting, or carrying firearms on National Wildlife Refuge System lands must comply with all provisions of State and local law. Persons may only use (discharge) firearms in accordance with refuge regulations (50 CFR 27.42 and specific refuge regulations on hunting in 50 CFR Part 32). Target shooting is not allowed.
- Off-road vehicle travel is prohibited.
- Trapping, fishing, boating, camping and fires are not permitted on the Refuge.
- Collecting, injuring, disturbing, destroying, or harming animals, animal parts, plants, natural items, and/or of antiquity, on public property is prohibited unless authorized by permit. This includes, but is not limited to, shed antlers, rocks, fossils, firewood, willow cuttings, historical artifacts, semi-precious minerals, etc.

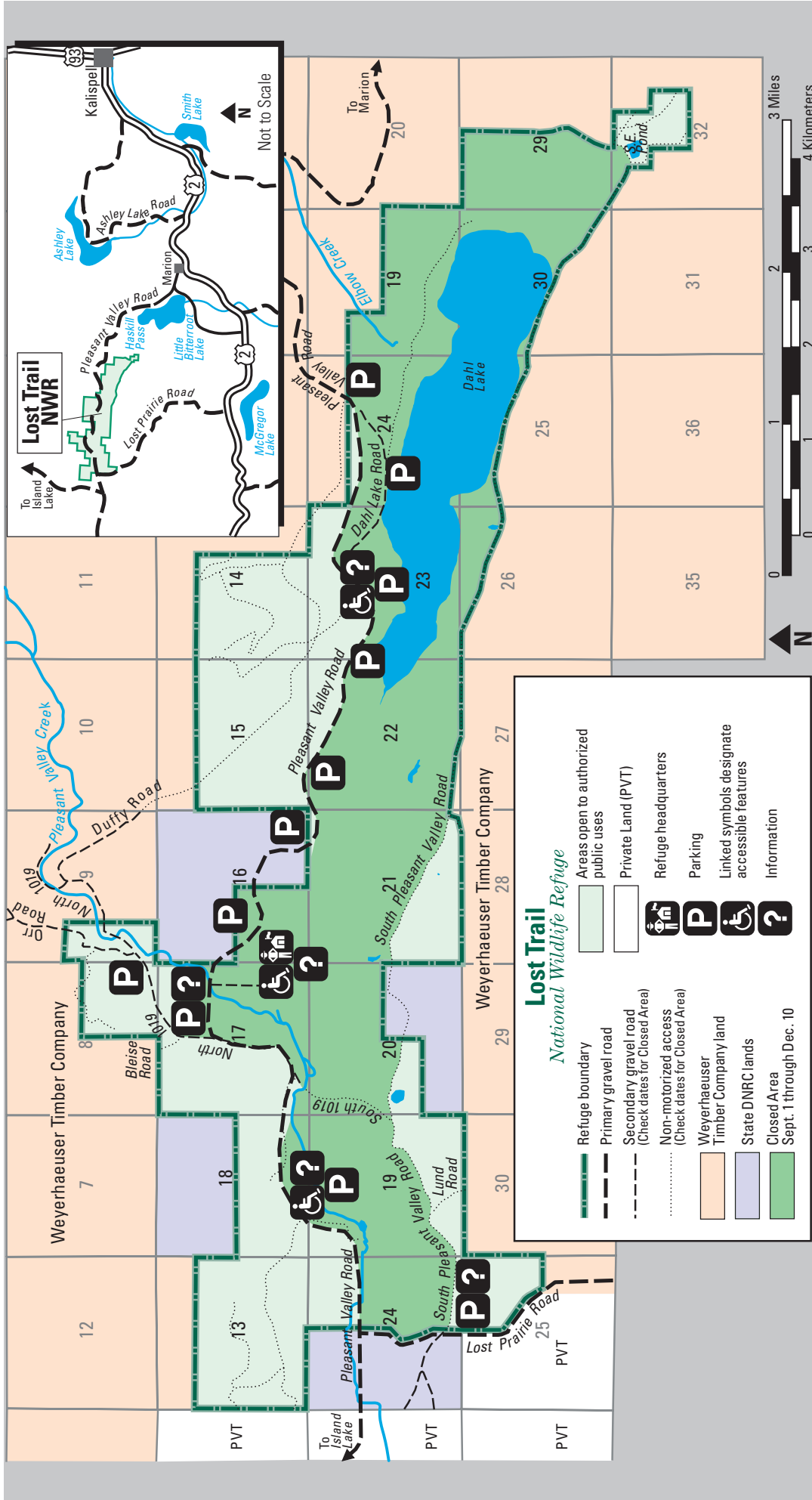
Refuge Hunting Regulations

Hunting on the Refuge, except in the designated Closed Area, is permitted for elk, deer, mountain grouse, and turkeys.

All other wildlife is protected. *Protected wildlife includes, but is not limited to, all waterfowl, moose, wolves, coyotes, mountain lions, bears, badgers and all small mammals including ground squirrels (commonly called gophers) and rabbits.*

All State of Montana hunting regulations apply. In addition, the following Refuge regulations apply:

- Please be aware that the first week of both archery and general deer and elk season are open to youth-only (ages 12-15) hunting. A non-hunting adult at least 18 years of age must accompany the youth hunter in the field. *Adults may not cross Refuge property for the purpose of hunting off-Refuge property during the youth-only hunting season. Also, during this season, adults will need to obtain a Refuge retrieval permit to retrieve any game they have shot on non-Refuge lands that run onto Refuge lands.*
- Hunters need to obtain a Refuge retrieval permit before retrieving game from within the Closed Area.
- Hunters must use and may only possess non-toxic shot in the field while hunting mountain grouse and turkeys with a shotgun. Only shotguns 10 gauge and smaller may be used.
- The use of dogs for hunting is not permitted. Pets must be kept on a leash as all times.
- The use of artificial lights and/or electronic calls to attract, search for, or spot wildlife is prohibited.
- Portable or temporary blinds or tree stands are permitted, but must be removed on a daily basis. The use of nails, wire, screws, or bolts to attach a stand to a tree, or hunting from a tree into which a metal object has been driven to support a hunter is prohibited.
- Guiding and outfitting are prohibited.
- The distribution of bait and hunting over bait is prohibited.
- The use or possession of alcoholic beverages while hunting is prohibited.



Refuge Signs

Refuge Boundary

Areas behind this sign are open to authorized public uses only.

Regulations and further information are available at the Refuge headquarters.

Public Hunting

Areas behind this sign are open to public hunting for deer, elk, turkey, and mountain grouse only.

No Hunting

Areas behind this sign are closed to hunting.

Accessibility Information

Equal opportunity to participate in and benefit from programs and activities of the U.S. Fish and Wildlife Service is available to all individuals regardless of physical or mental ability. Dial 711 for a free connection to the State relay service for TTY and voice calls to and from people with hearing and speech disabilities. For more information or to address accessibility needs, please contact the Refuge staff at 406 / 858-2216, or the U.S. Department of the Interior, Office of Equal Opportunity, 1849 C Street, NW, Washington, D.C. 20240.

Lost Trail National Wildlife Refuge

6295 Pleasant Valley Road
Marion, MT 59925

406 / 858 2216

406 / 858 2218 fax

http://www.fws.gov/refuge/lost_trail

For Refuge Information

1 800 / 344 WILD

For State relay service

TTY / Voice: 711

March 2017

U.S. Fish and Wildlife Service
<http://www.fws.gov>

