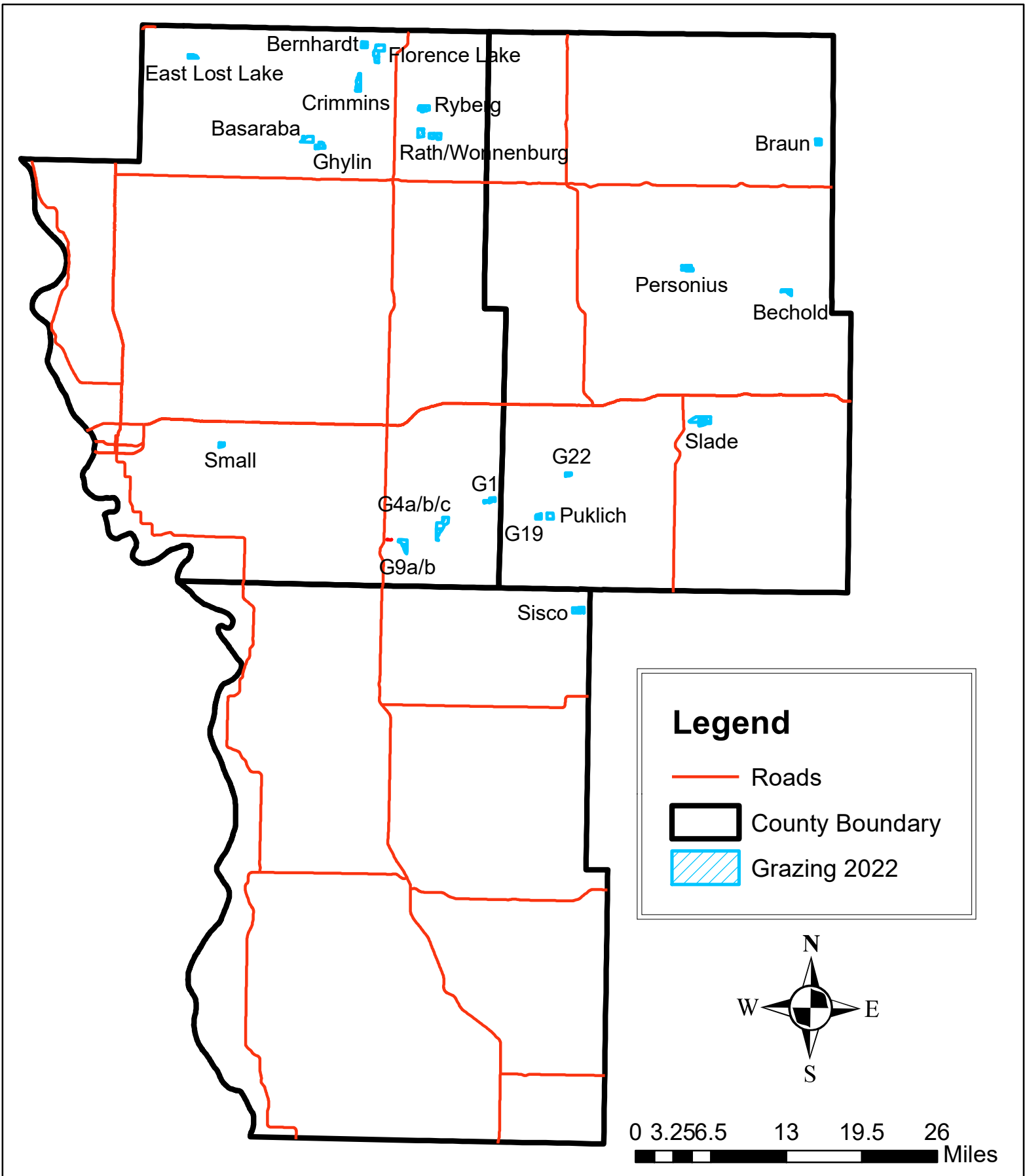


**Long Lake National Wildlife Refuge Complex
2022 Grazing Units**

<u>Unit</u>	<u>County</u>	<u>Approximate Grazing Acres</u>	<u>Start Date</u>	<u>Approximate Grazing Days</u>	<u>Animals</u>	<u>Location</u>
Basaraba	Burleigh	273	15-May	60	75 pairs	143-77-21
Bechold	Kidder	119	10-May	35	75 pairs	141-70-28,29
Bernhardt	Burleigh	130	15-May	20	150 pairs	144-76-8
Braun	Kidder	134	10-May	30	90 pairs	143-70-23
Crimmins	Burleigh	277	15-May	85	75 pairs	144-76-30,31
East Lost Lake	Burleigh	130	15-May	30	100 pairs	144-79-14
Florence Lake NWR	Burleigh	470	15-May	115	75 pairs	144-76-9,16
Ghylin	Burleigh	180	15-May	60	75 pairs	143-77-27
LLNWR G1	Burleigh	147	15-May	45	75 pairs	138-75-25, 26
LLNWR G4a/b/c	Burleigh	515	15-May	120	100 pairs	137-75-5,6,7
LLNWR G9a/b	Burleigh	283	15-May	65	100 pairs	137-76-15
LLNWR G19	Kidder	117	15-May	40	65 pairs	138-74-34
LLNWR G22	Kidder	90	15-May	30	65 pairs	138-74-13
Personius	Kidder	213	10-May	35	115 pairs	141-72-13
Puklich	Kidder	167	15-May	45	65 pairs	138-74-35
Rath/Wonn.	Burleigh	432	15-May	80	100 pairs	143-75-16,19,20
Ryberg	Burleigh	190	15-May	60	75 pairs	143-75-6
Sisco	Emmons	209	15-May	45	100 pairs	136-74-11,12
Slade NWR	Kidder	393	15-May	107	75 pairs	139-72-23,24
Small	Burleigh	90	15-May	40	50 pairs	138-79-1

Long Lake Refuge Complex Grazing Units 2022

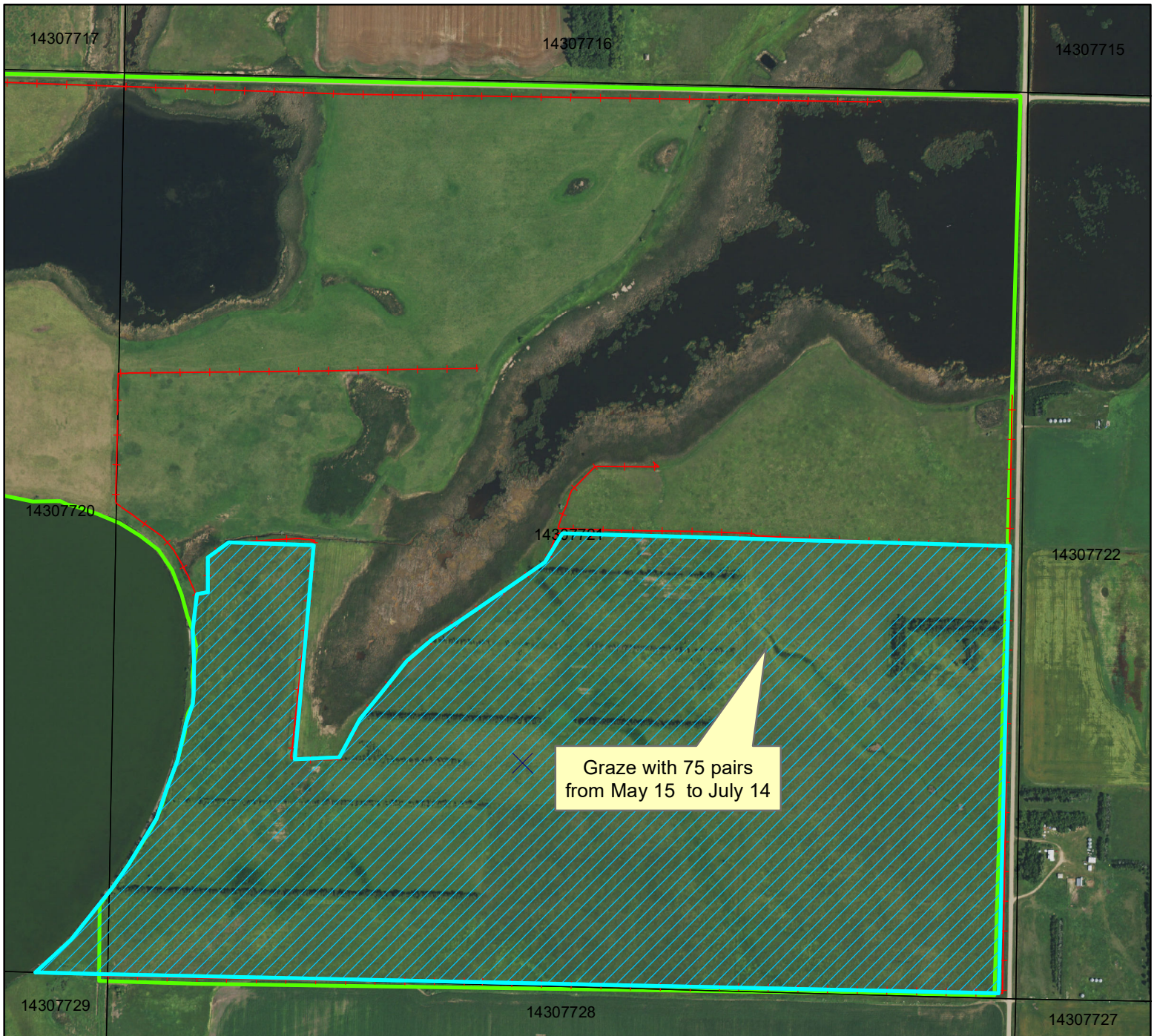
Color maps of units may be found on our website: https://www.fws.gov/refuge/long_lake/



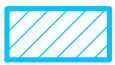

Basaraba WPA Burleigh County ND

T. 143 N., R. 77 W., Section 21

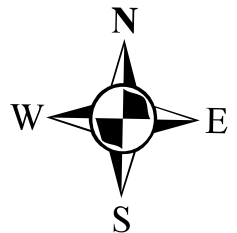
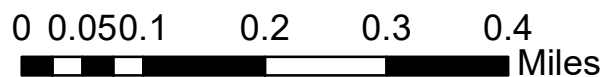
Approximately 273 acres



Legend

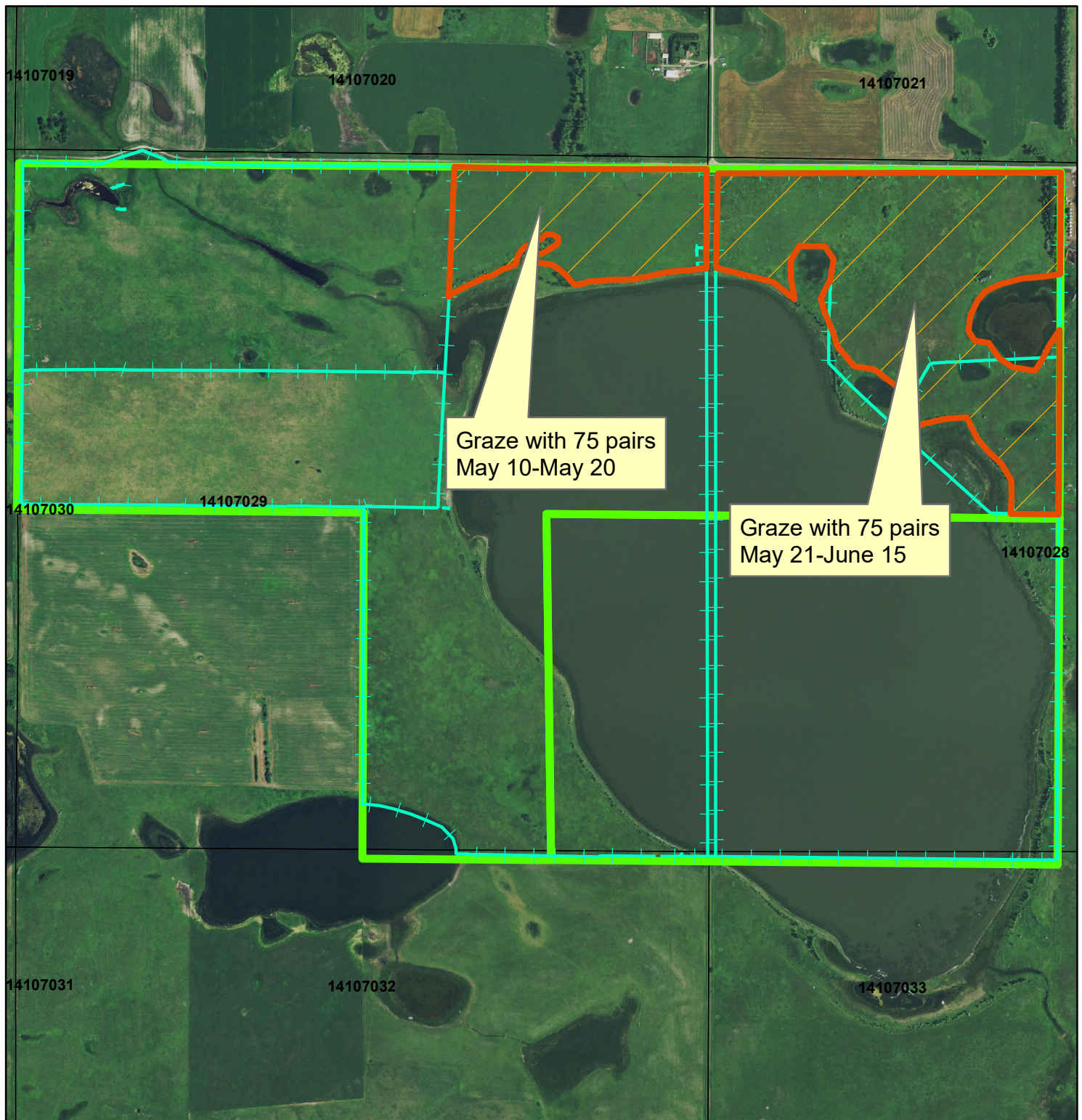
- Fencing
-  Grazing 2022
-  WPA Boundary

Significant fence repair may be required on this unit.



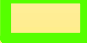


Bechold WPA 2022 Grazing

T. 141 N., R. 70 W, Sec. 28 & 29



Legend

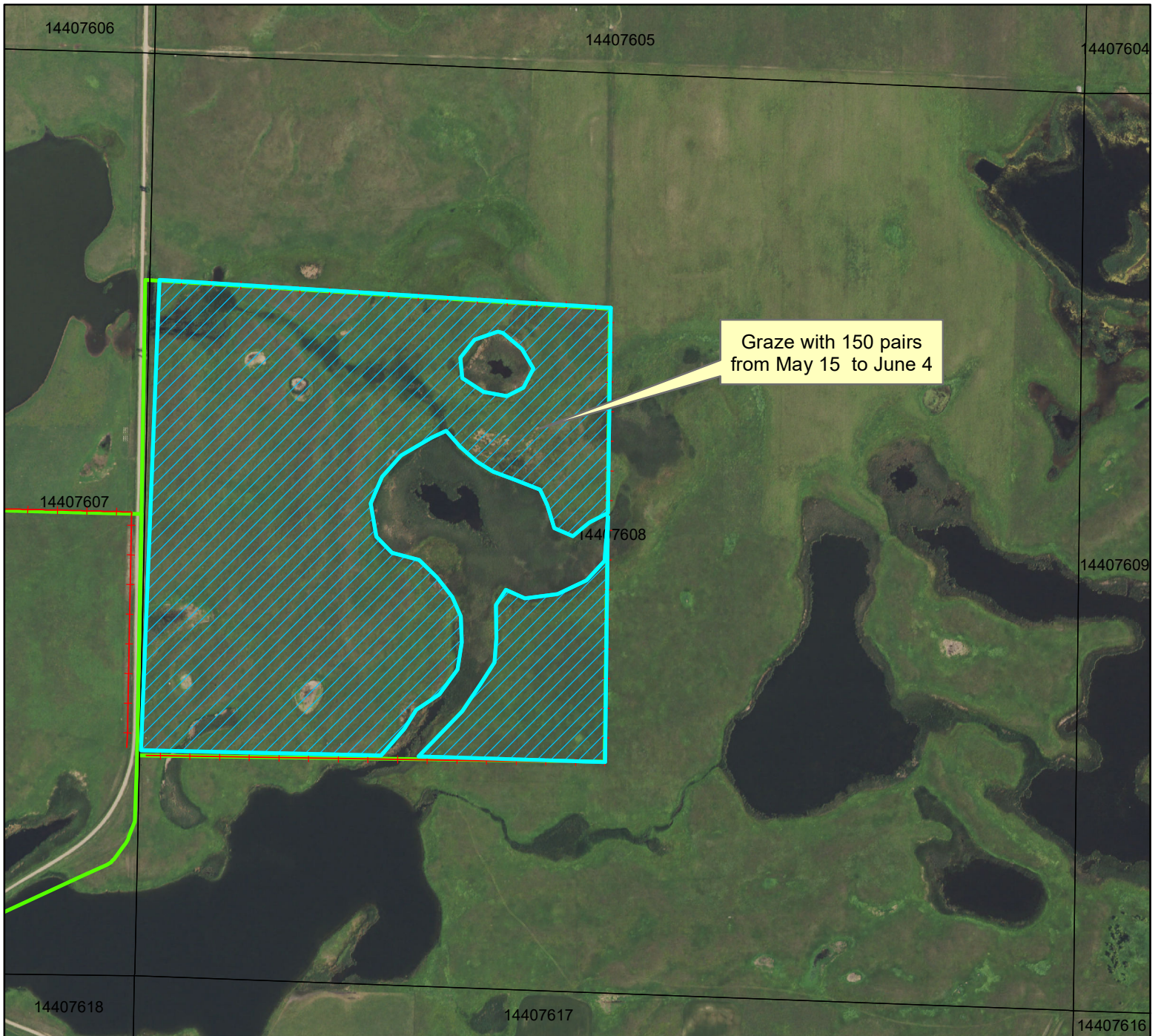
-  Grazing Unit
-  Fence
-  WPA Boundary



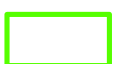
Bernhardt WPA Burleigh County ND

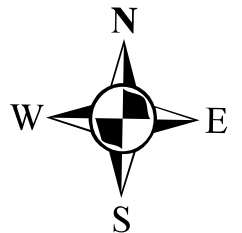
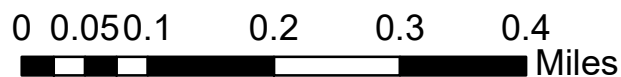
T. 144 N., R. 76 W., Section 8

Approximately 130 acres



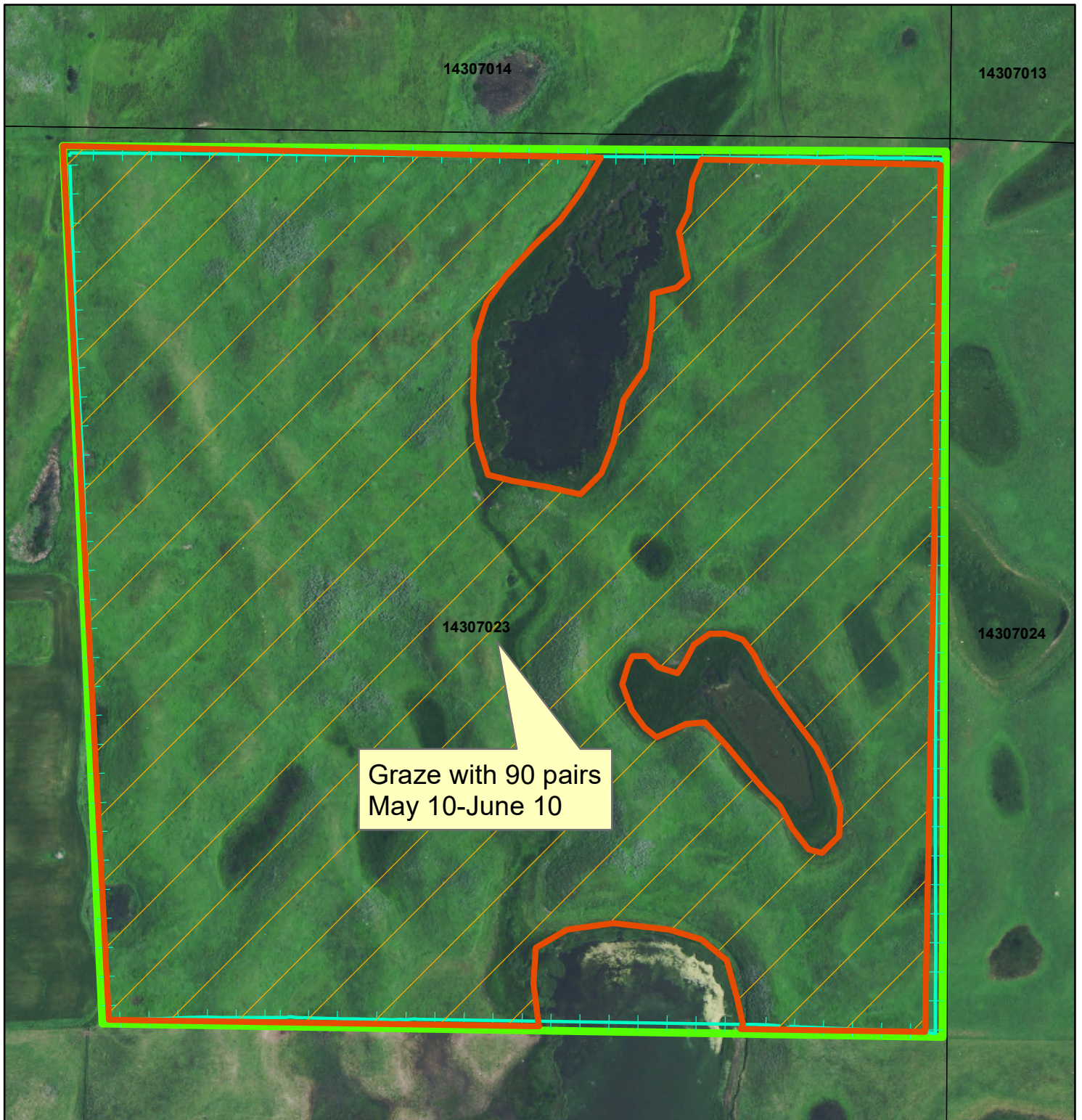
Legend

- Fencing
-  Grazing 2022
-  WPA Boundary


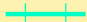
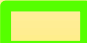


Braun WPA 2022 Grazing

T. 143 N., R. 70 W, Sec. 23



Legend

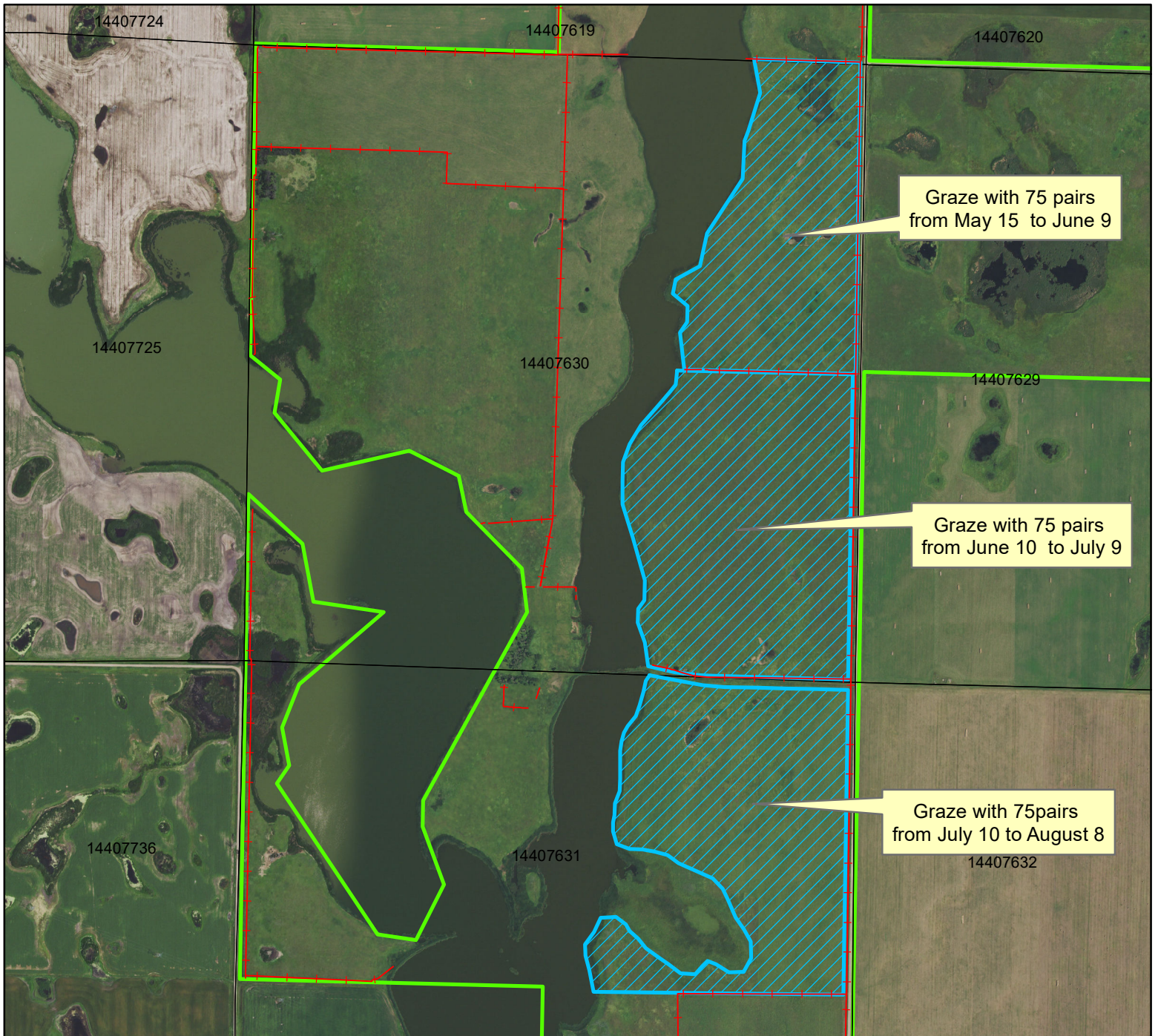
-  Grazing Unit
-  Fence
-  WPA Boundary



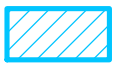
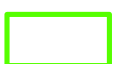
Crimmins WPA Burleigh County ND

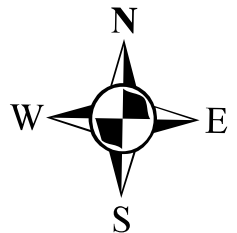
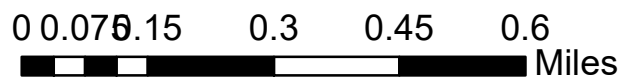
T. 144 N., R. 76 W., Section 30, 31

Approximately 277 acres



Legend

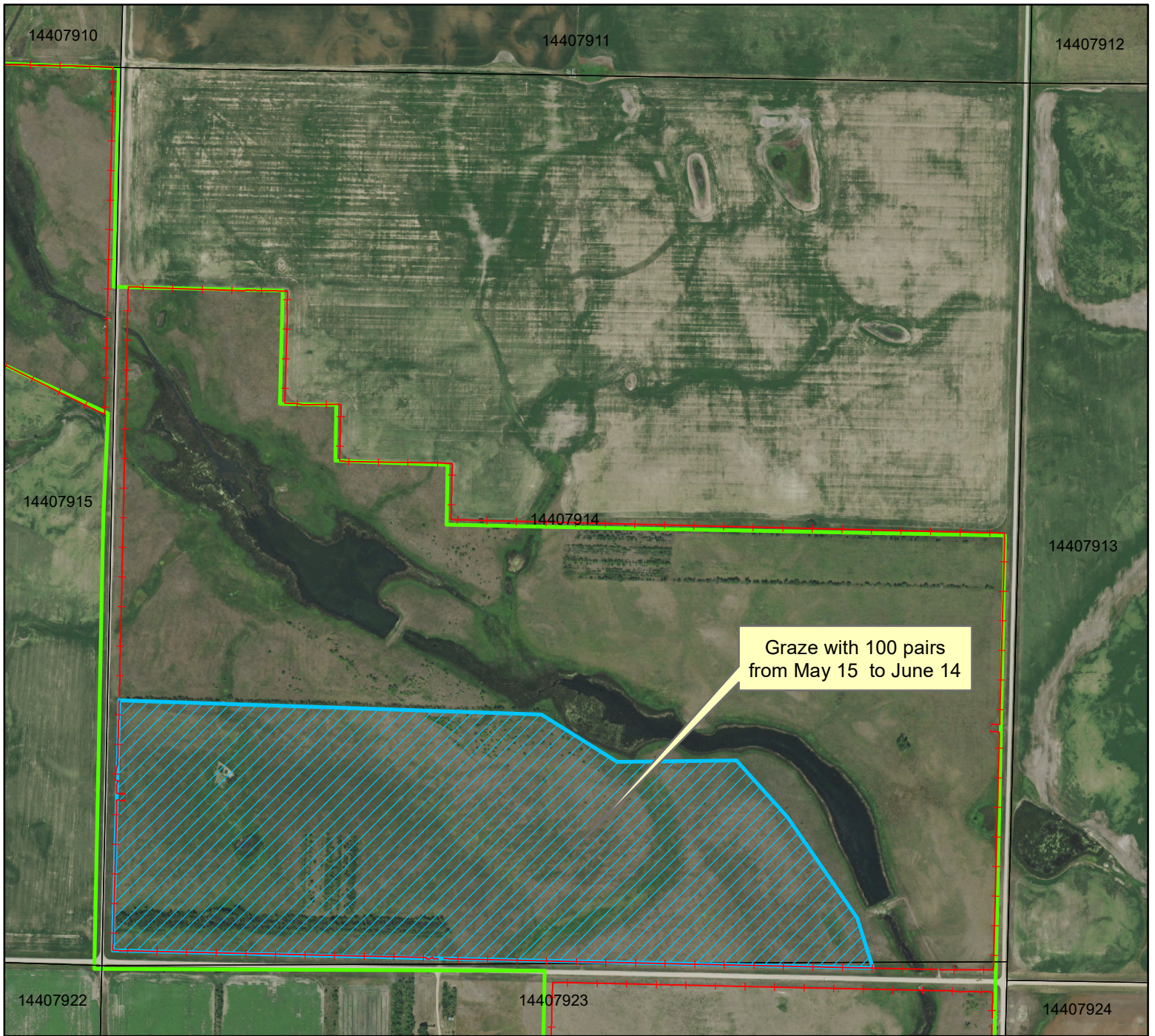
- +---+ Fencing
-  Grazing 2022
-  WPA Boundary






East Lost Lake WPA Burleigh County ND

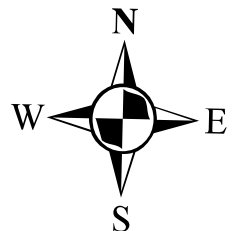
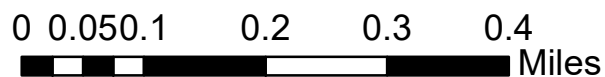
T. 144 N., R. 79 W., Section 14

Approximately 130 acres



Legend

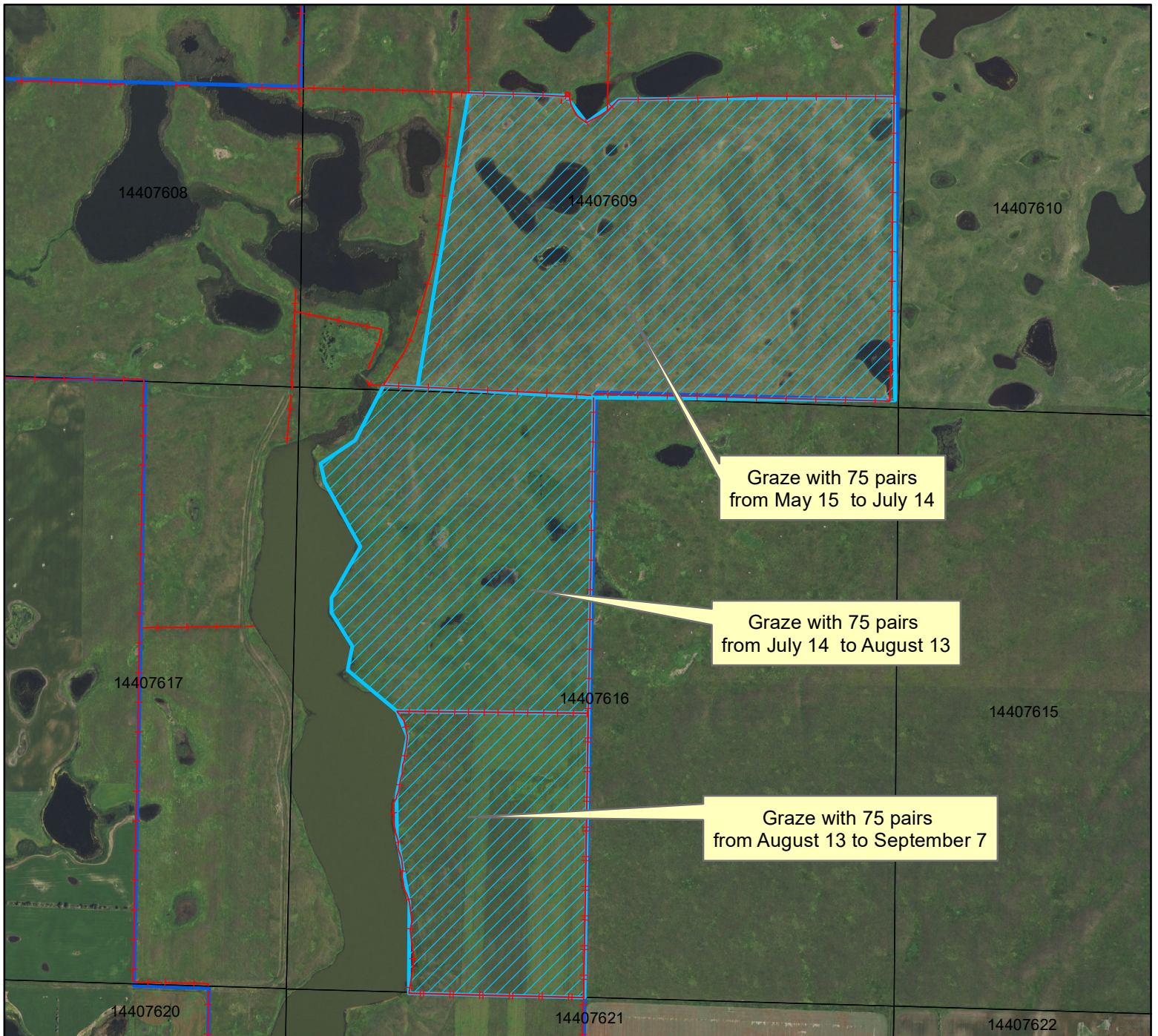
-  Fencing
-  Grazing 2022
-  WPA Boundary



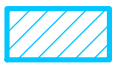

Florence Lake NWR Burleigh County ND

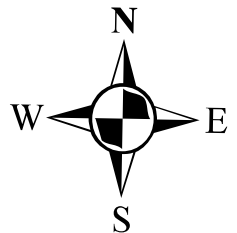
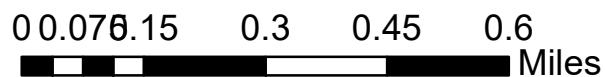
T. 144 N., R. 76 W., Section 9 & 16

Approximately 470 acres



Legend

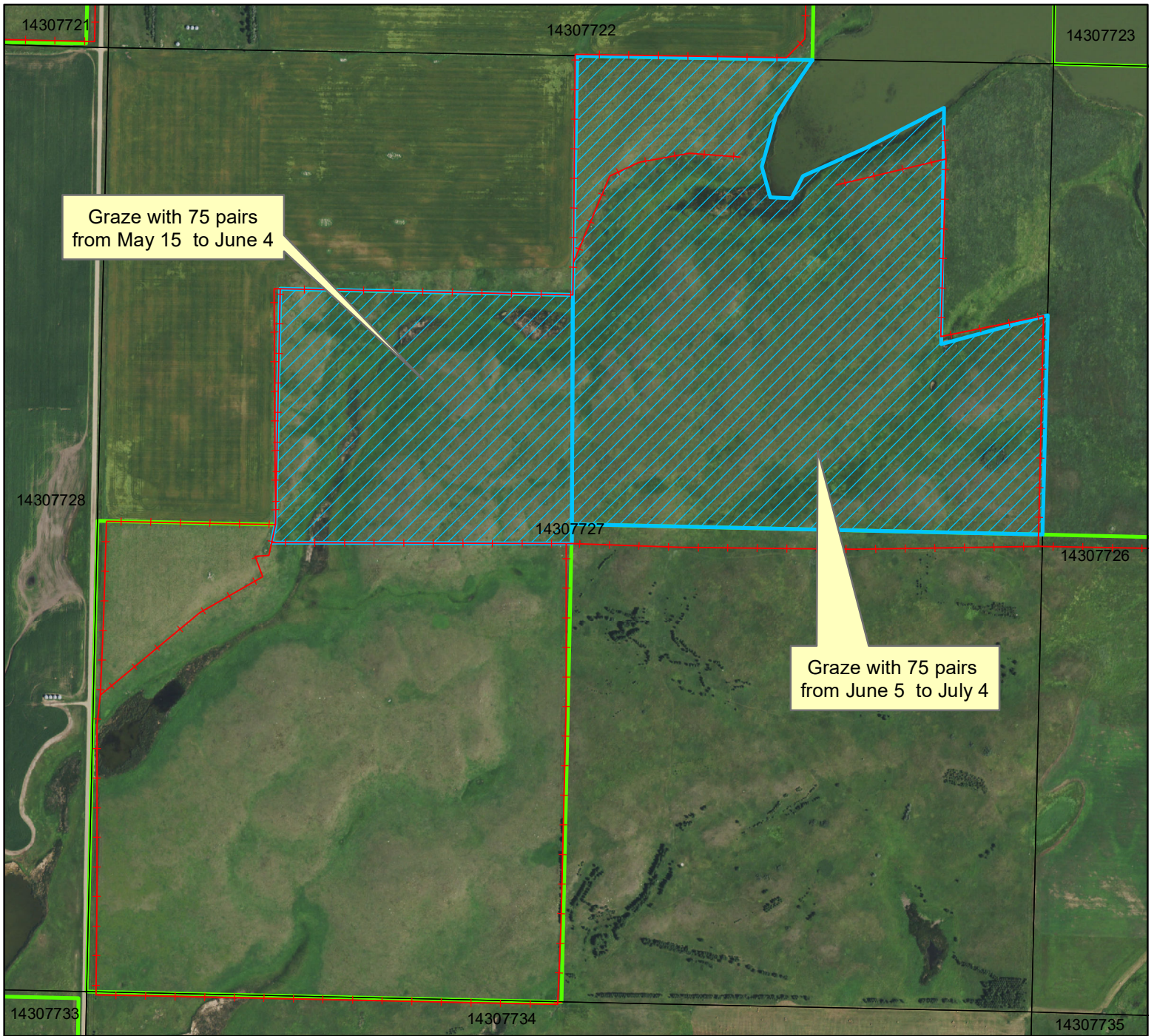
- Fencing
-  Grazing 2022
-  Refuge Boundary



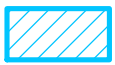

Ghylin WPA Burleigh County ND

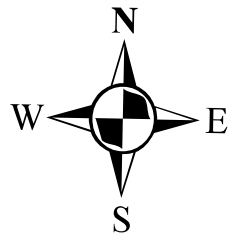
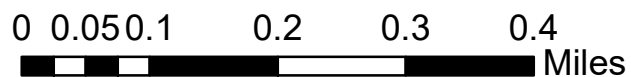
T. 143 N., R. 77 W., Section 27

Approximately 180 acres



Legend

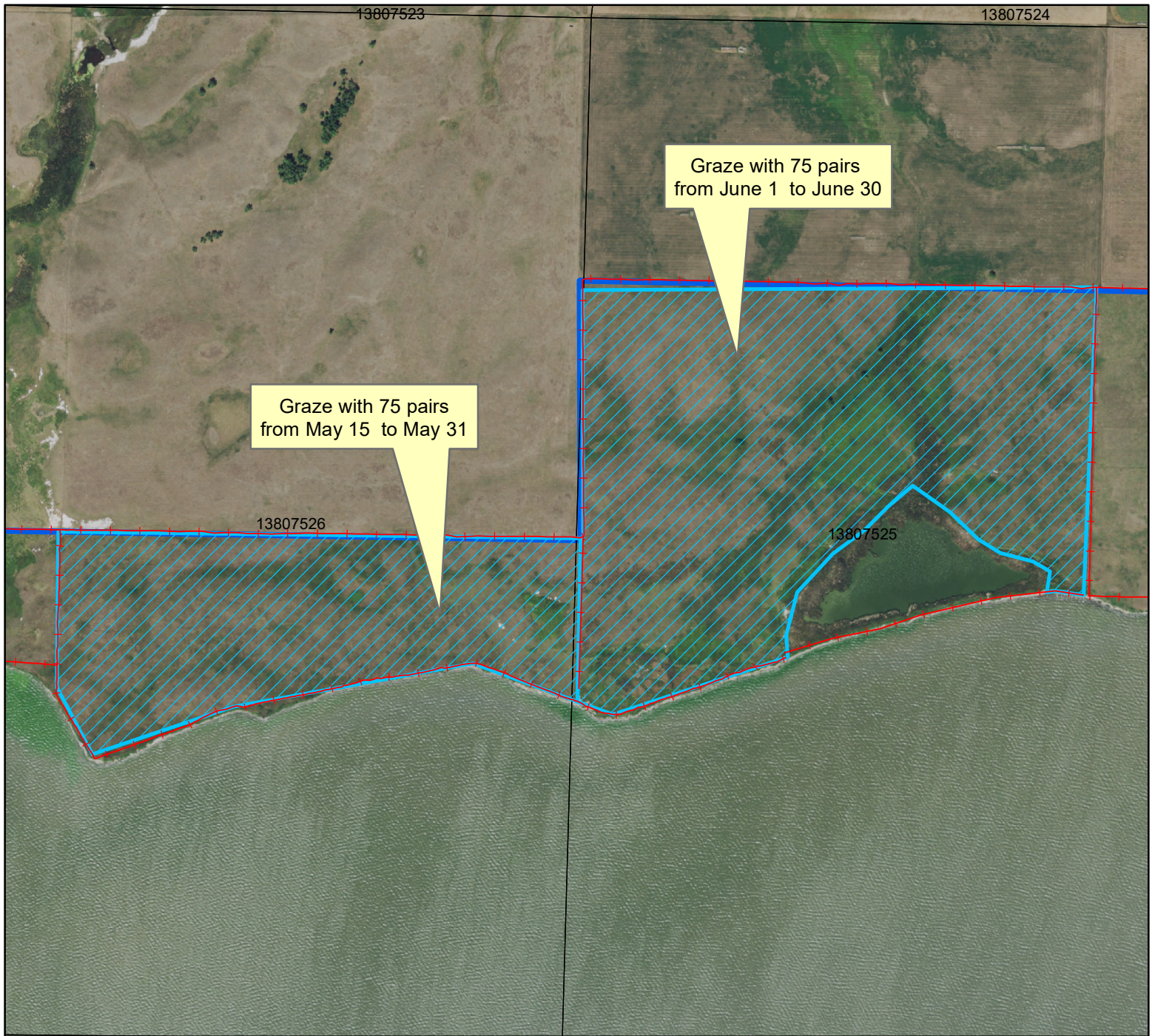
- +---+ Fencing
-  Grazing 2022
-  WPA Boundary



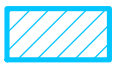

Long Lake NWR G1 Burleigh County ND

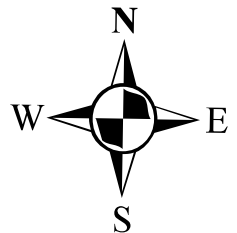
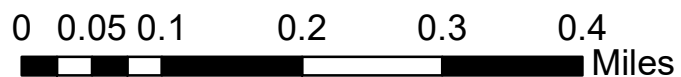
T. 138 N., R. 75 W., Section 25 & 26

Approximately 147 acres



Legend

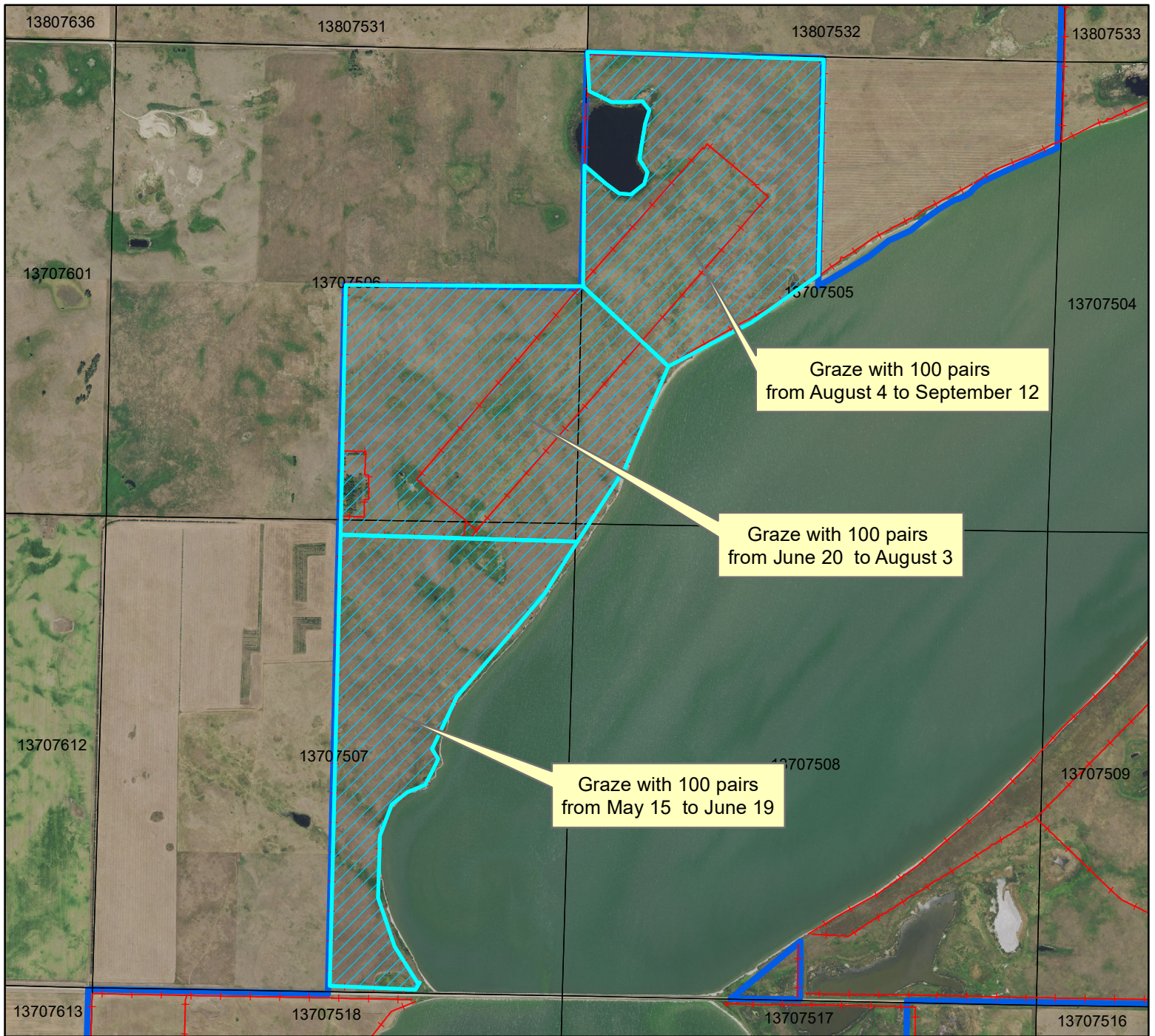
- Fencing
-  Grazing 2022
-  Refuge Boundary



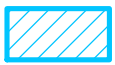

Long Lake NWR G4a/b/c Burleigh County ND

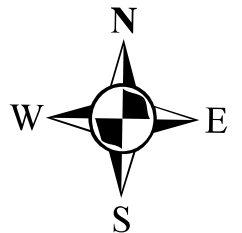
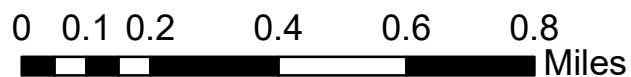
T. 137 N., R. 75 W., Section 5, 6, 7

Approximately 515 acres



Legend

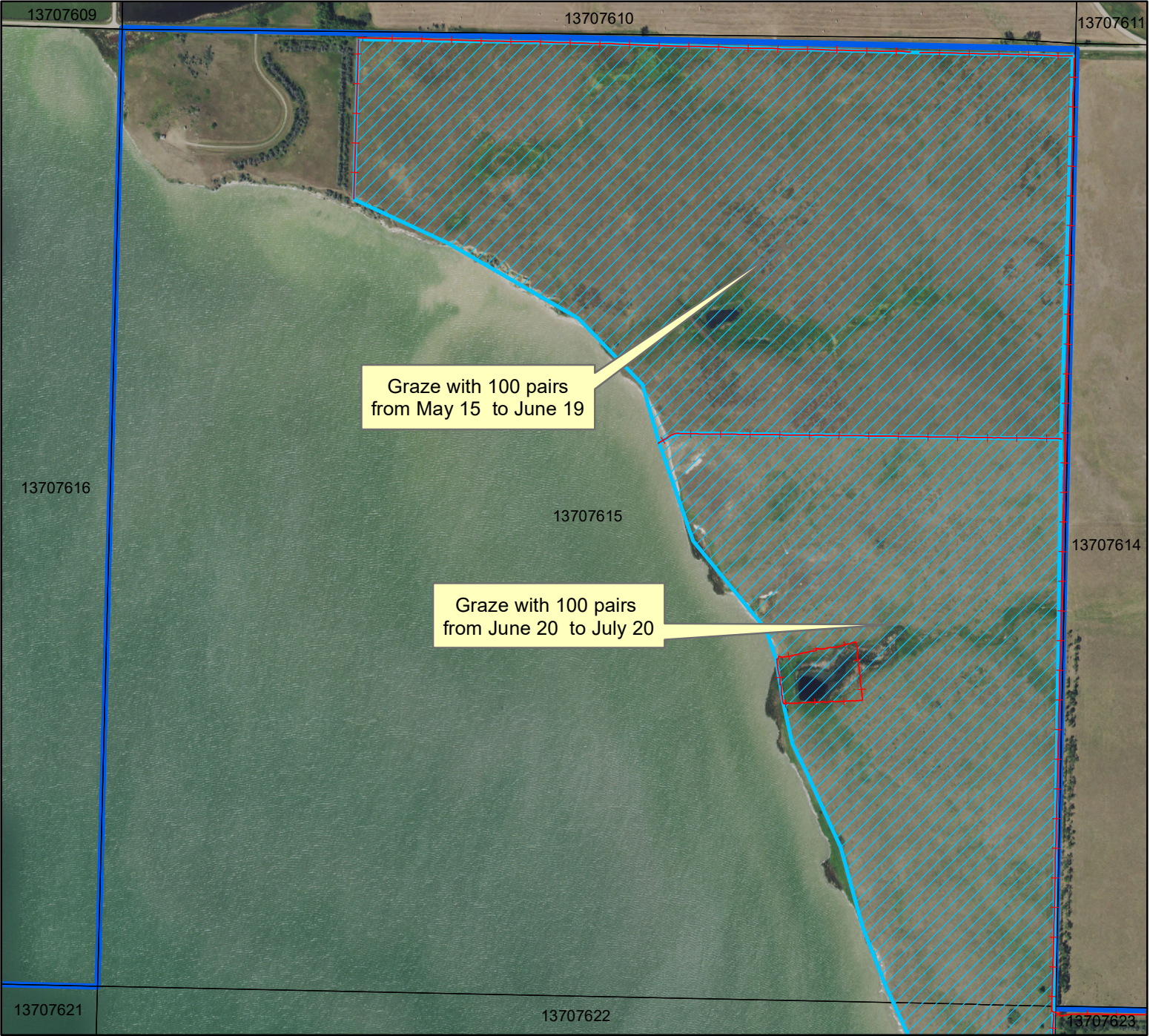
- Fencing
-  Grazing 2022
-  Refuge Boundary





Long Lake NWR G9a/b Burleigh County ND

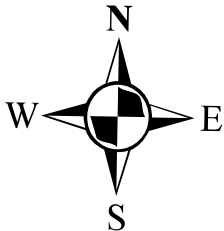
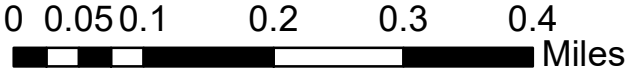
T. 137 N., R. 76 W., Section 15

Approximately 283 acres



Legend

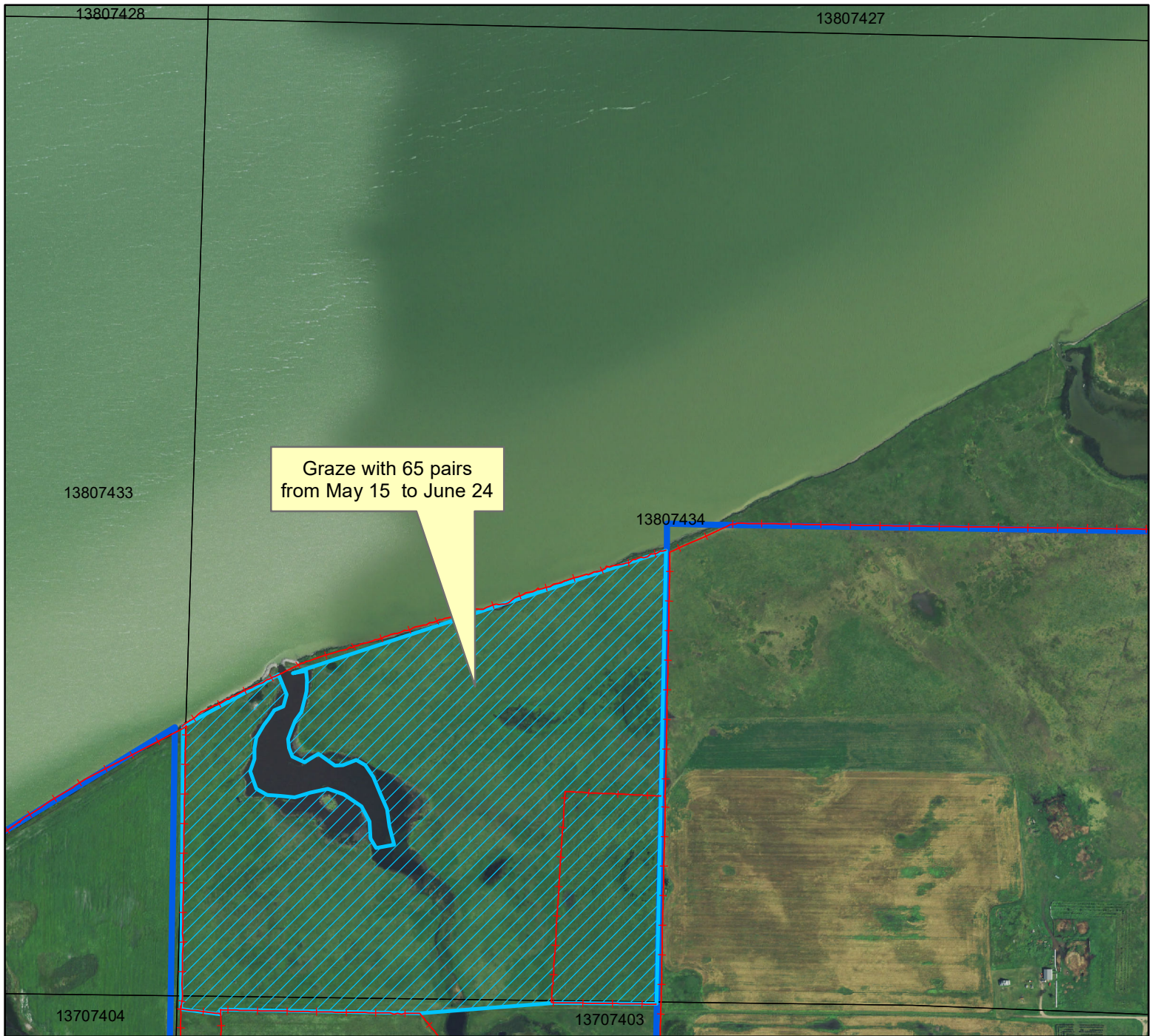
- Fencing
-  Grazing 2022
-  Refuge Boundary



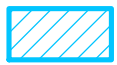

Long Lake NWR G19 Kidder County ND

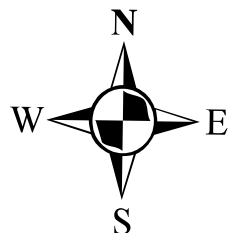
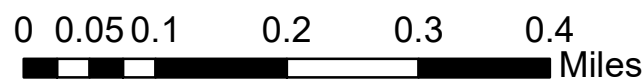
T. 138 N., R. 74 W., Section 34

Approximately 117 acres



Legend

- Fencing
-  Grazing 2022
-  Refuge Boundary






Long Lake NWR G22 Kidder County ND

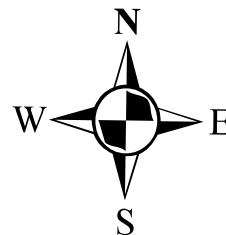
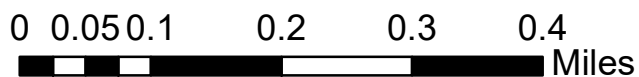
T. 138 N., R. 74 W., Section 13

Approximately 90 acres



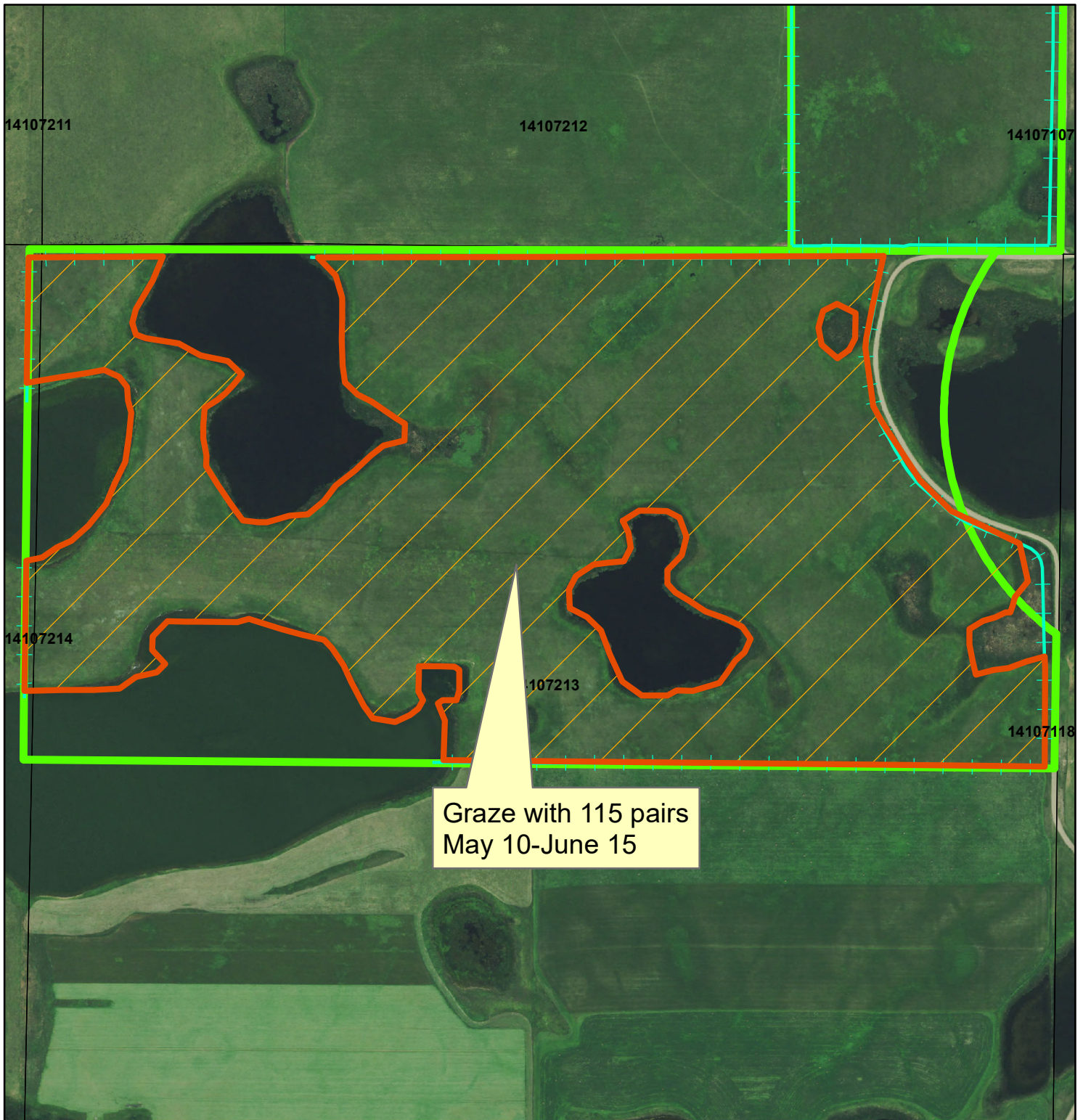
Legend

-  Fencing
-  Grazing 2022
-  Refuge Boundary


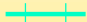
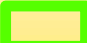


Personious WPA 2022 Grazing

T. 141 N., R. 72 W, Sec. 13



Legend

-  Grazing Unit
-  Fence
-  WPA Boundary



Puklich WPA Kidder County ND

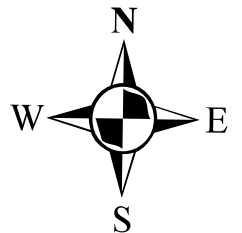
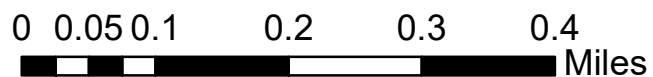
T. 138 N., R. 74 W., Section 35

Approximately 167 acres



Legend

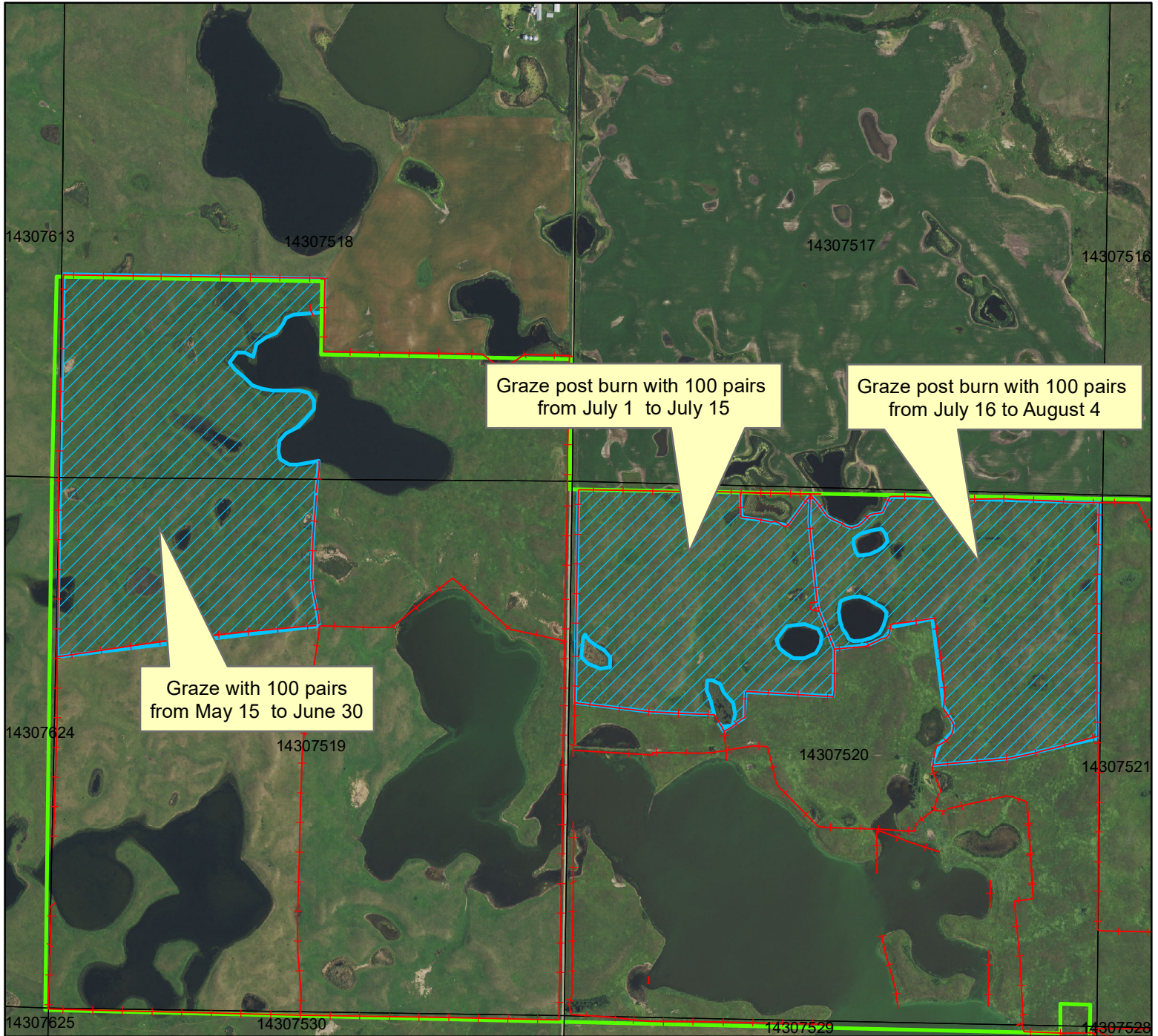
- Fencing
- WPA Boundary
- Grazing 2022



Rath/Wonnenburg WPA Burleigh County ND

T. 143 N., R. 75 W., Section 16, 19 & 20

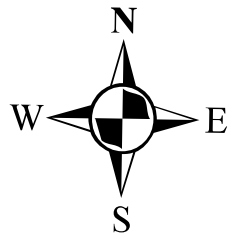
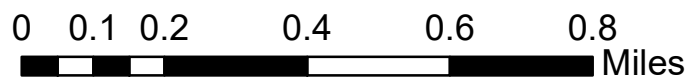
Approximately 432 acres



Legend

- Fencing
- WPA Boundary
- Grazing 2022

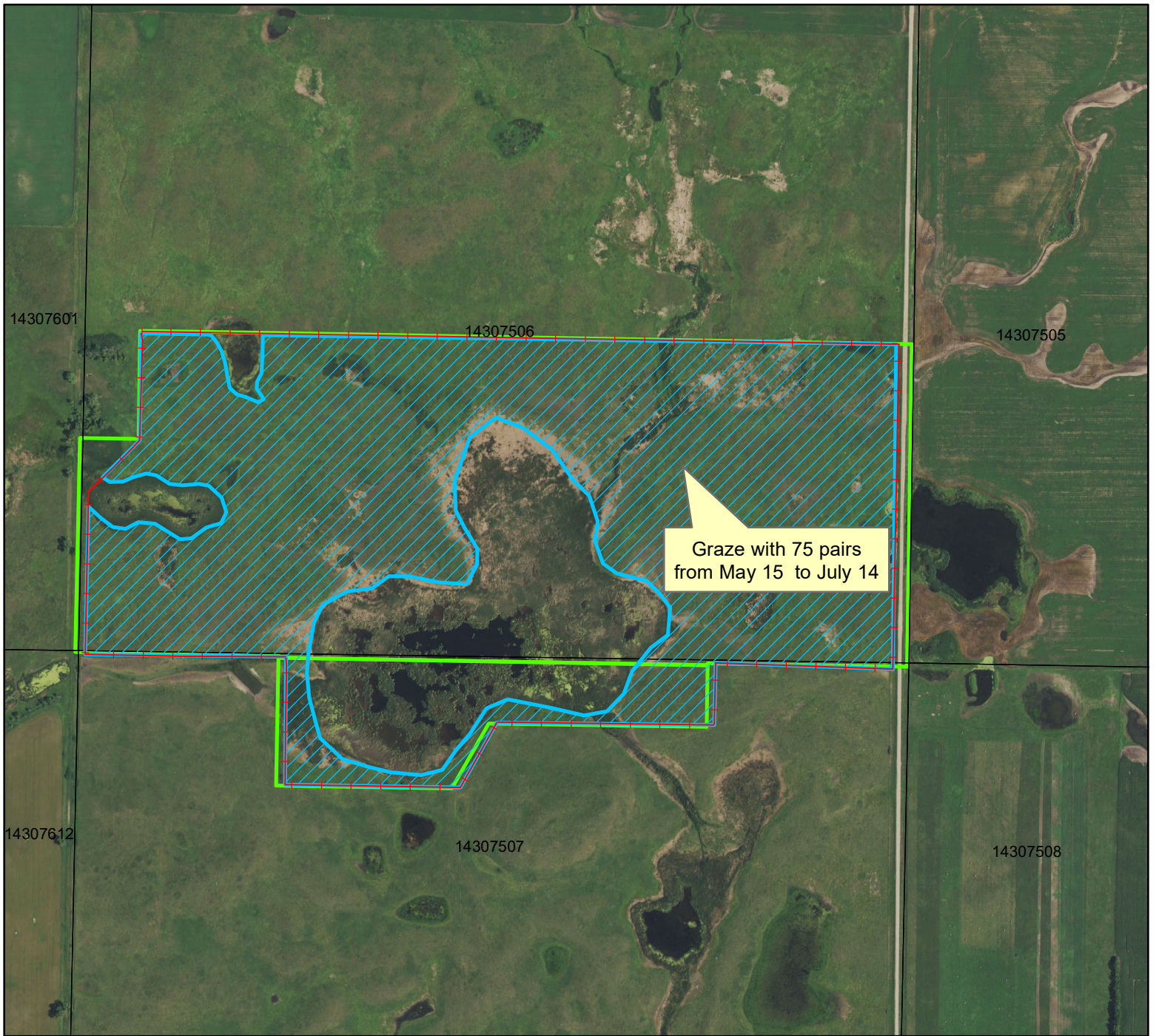
Significant fence repair may be required on this unit.



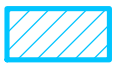

Ryberg WPA Burleigh County ND

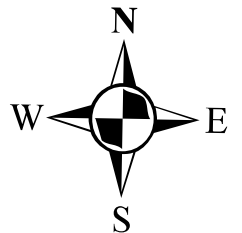
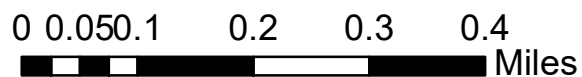
T. 143 N., R. 75 W., Section 6

Approximately 190 acres



Legend

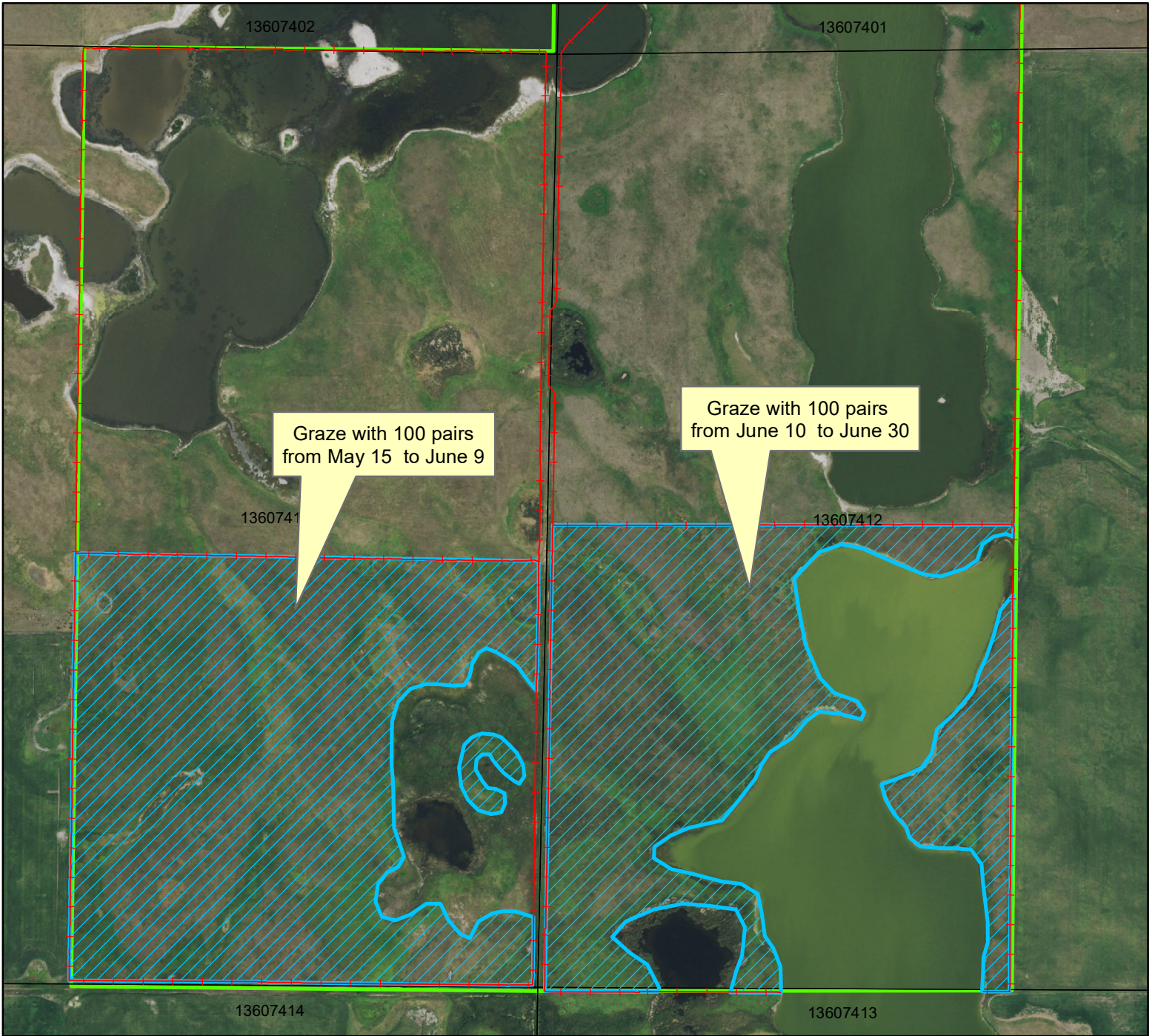
- +—+— Fencing
-  Grazing 2022
-  WPA Boundary





Sisco/Fallgatter WPA Emmons County ND

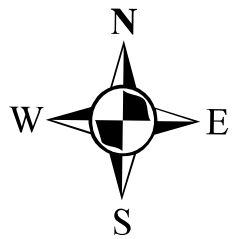
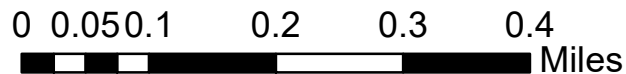
T. 136 N., R. 74 W., Section 11 & 12

Approximately 209 acres



Legend

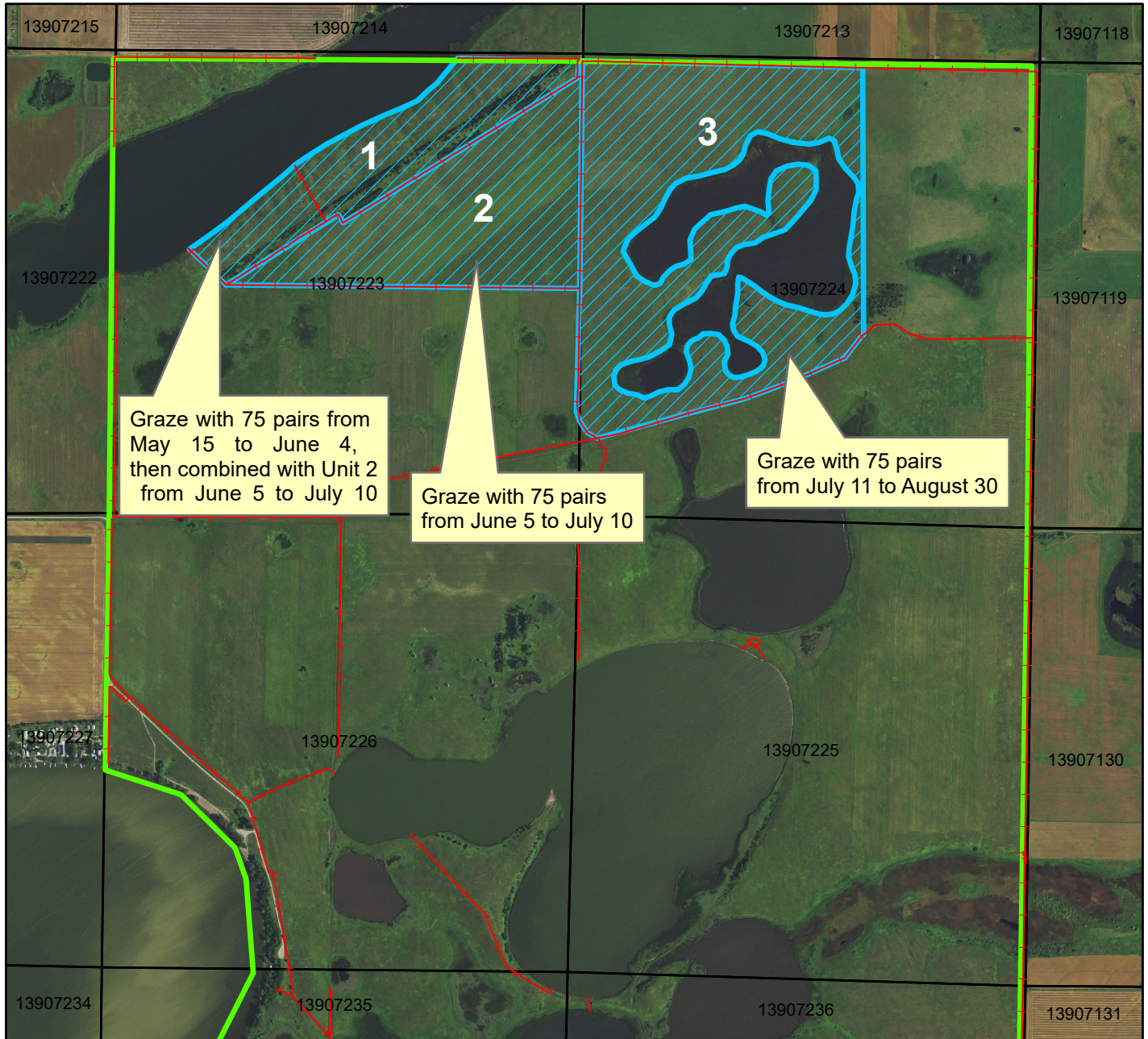
- Fencing
-  Grazing 2022
-  WPA Boundary






Slade NWR Kidder County ND

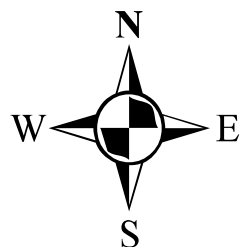
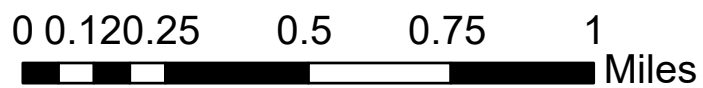
T. 139 N., R. 72 W., Section 23, 24

Approximately 393 acres

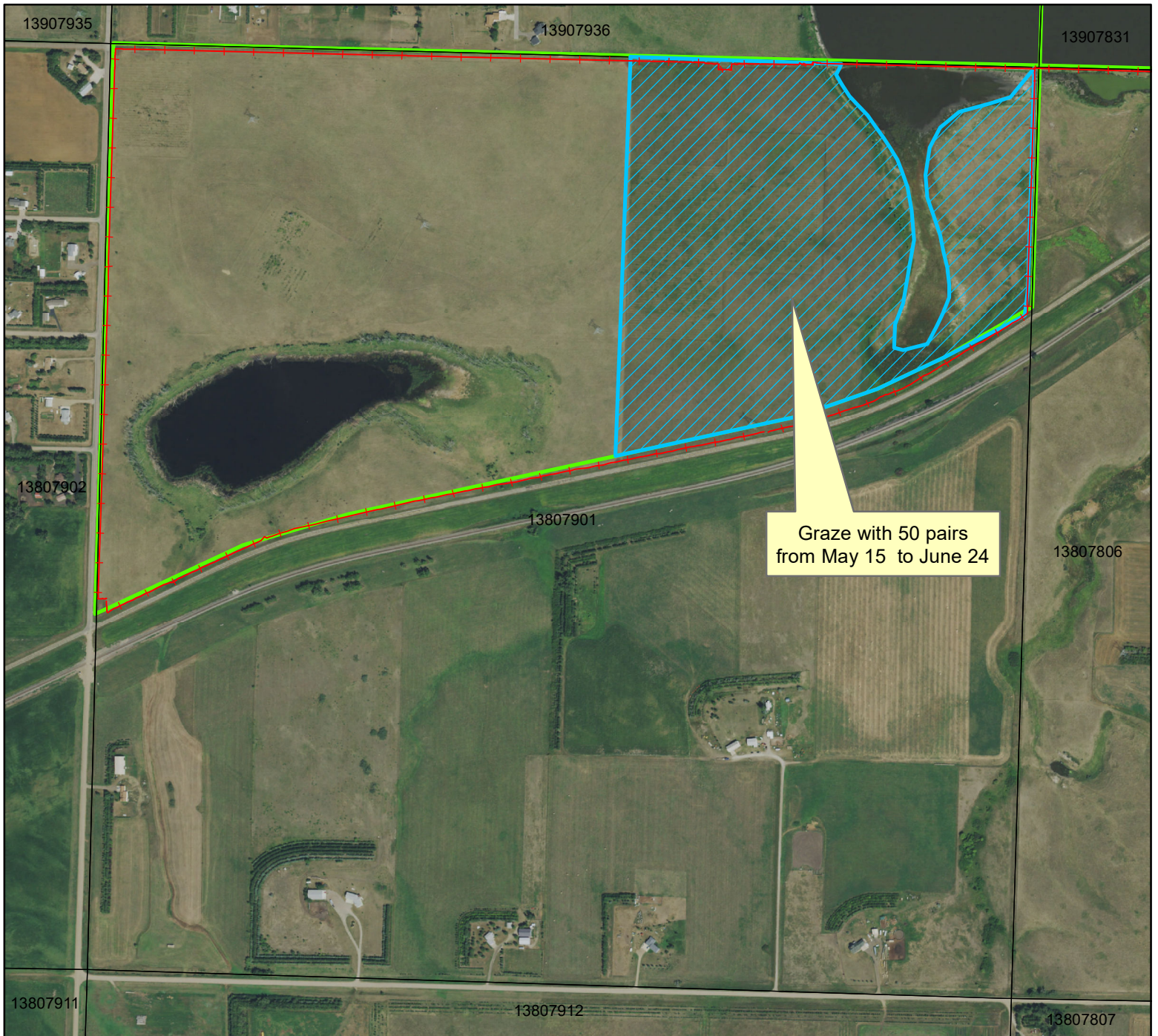


Legend


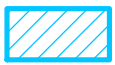
-  Fencing
-  Refuge Boundary
-  Grazing 2022



Small WPA Burleigh County ND T. 138 N., R. 79 W., Section 1 Approximately 90 acres



Legend

-  Fencing
-  Grazing 2022
-  WPA Boundary

0 0.05 0.1 0.2 0.3 0.4
Miles

