



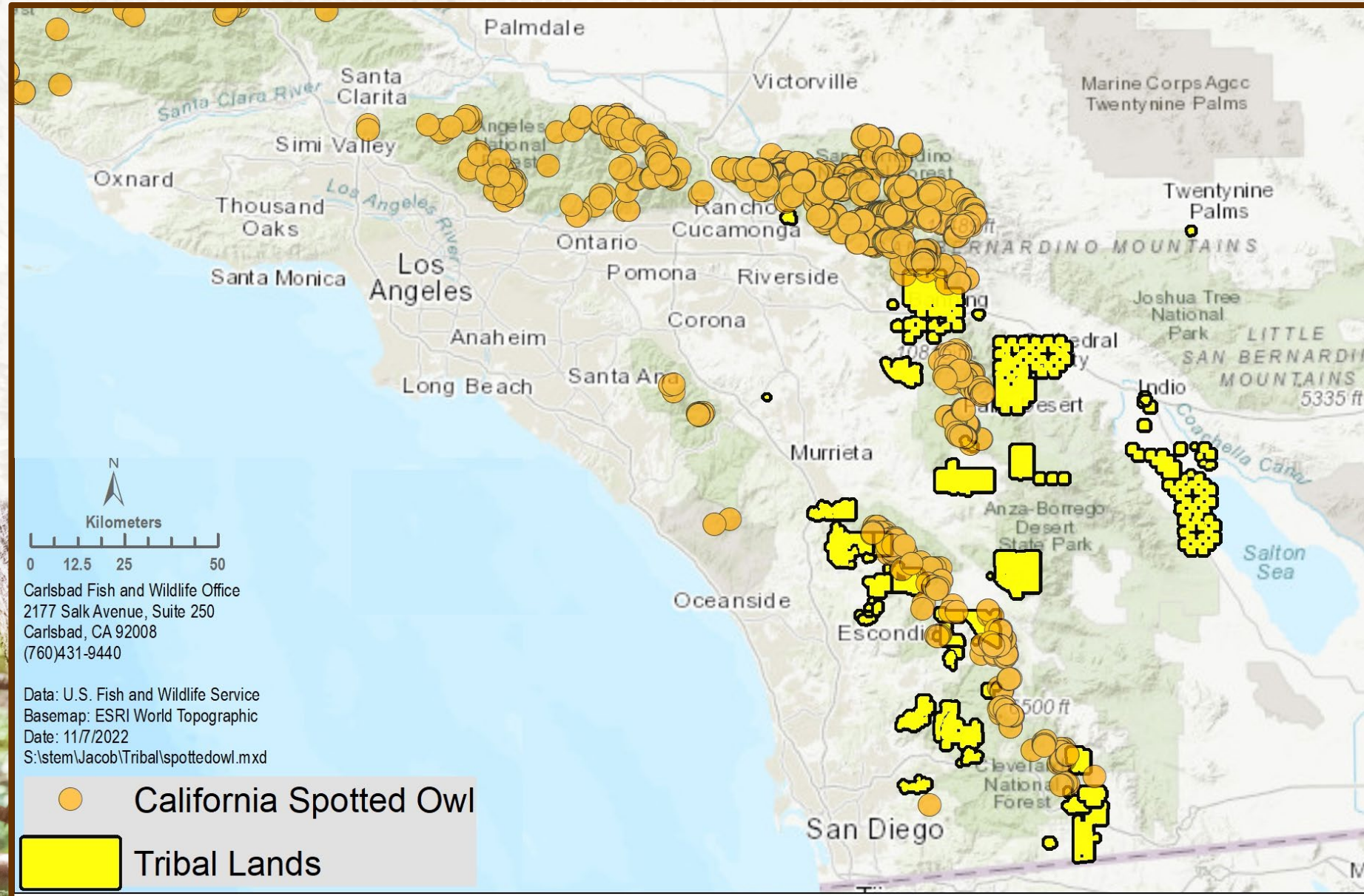
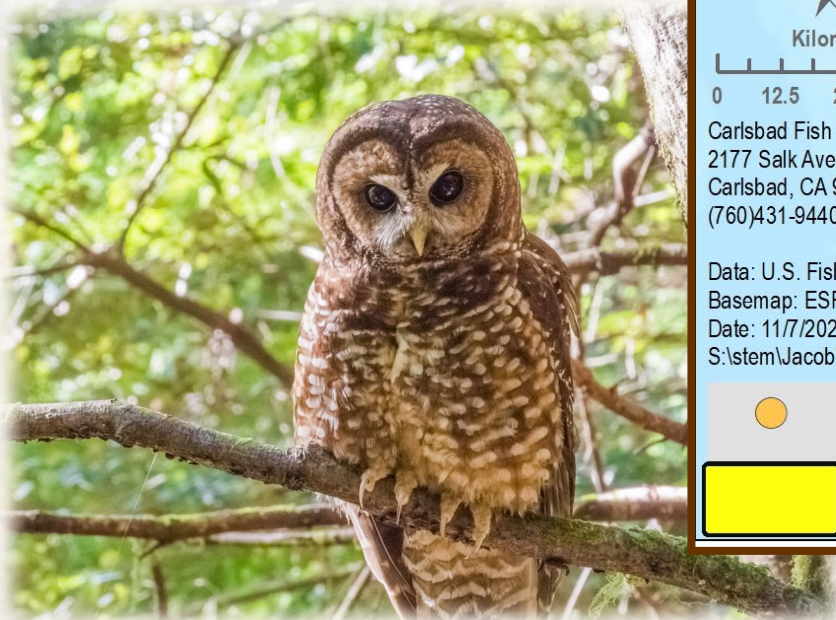
Classification and Recovery Actions

Carlsbad Fish and Wildlife Office
(Including Palm Springs)

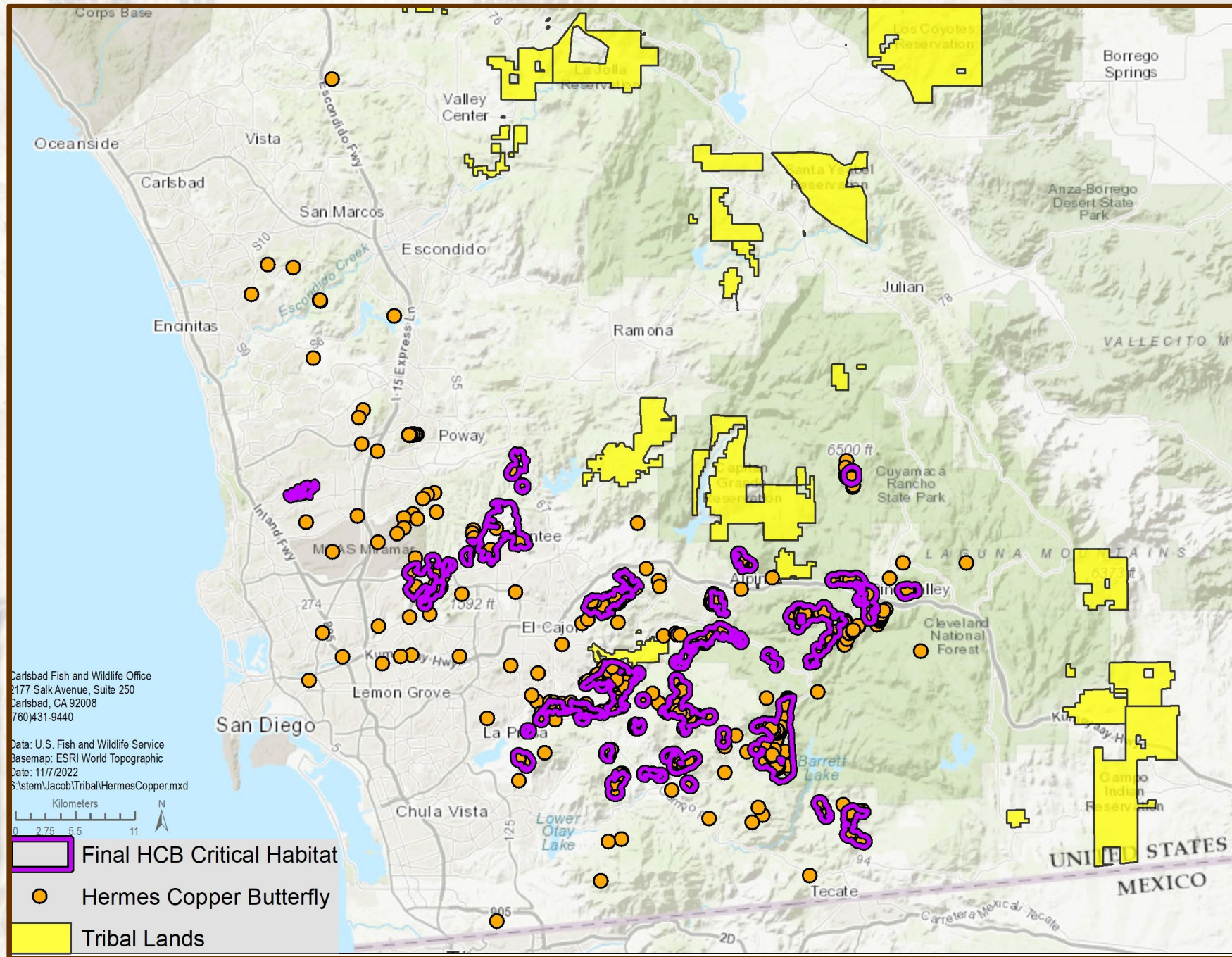
Fiscal Years 2021-2024

Species	Classification or Recovery Action	Publication Date (FY=Oct to Oct Yr)
California spotted owl	12-month finding status review (Sacramento FWO lead)	Expected FY 2023
Hermes copper butterfly	Final listing and final critical habitat Draft Recovery Plan	December 21, 2021 Expected FY 2023
Inyo California towhee	Final listing rule (correction, delisting rule)	Expected FY 2024
Joshua tree	12-month finding status review	Expected FY 2023
Santa Ana speckled dace	Substantial 90-day petition finding 12-month listing status-review	June 17, 2021 Expected 2024
Stephens' kangaroo rat	Final downlisting rule with a 4(d) rule	February 17, 2022
tidewater goby	Final listing rule (Ventura FWO lead)	Expected FY 2023
western spadefoot (formerly "toad")	12-month listing status review (Sacramento FWO lead)	Expected FY 2023
Western pond turtle	12-month listing status review (Ventura FWO lead)	Expected FY 2023

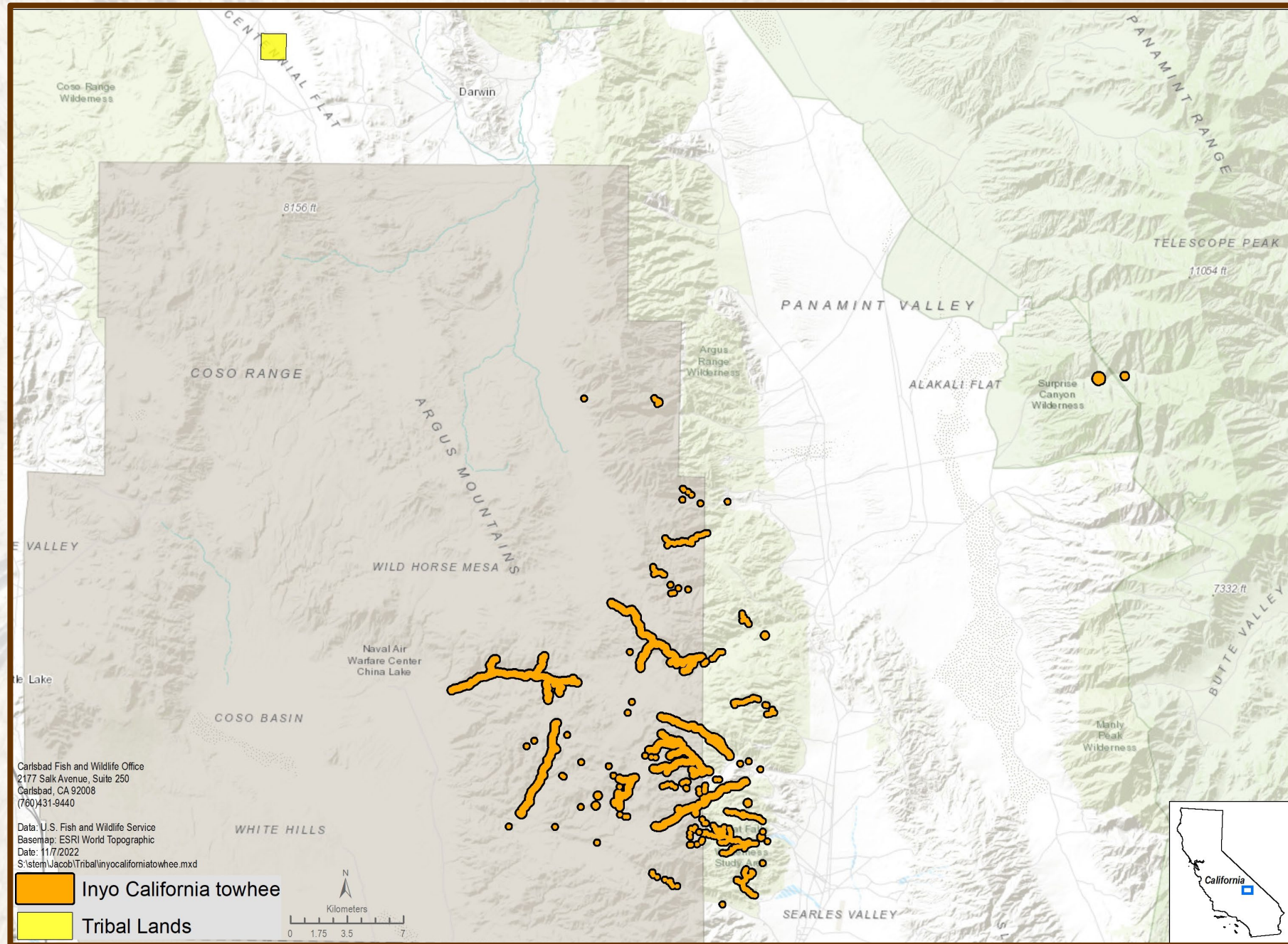
California spotted owl 12 month finding status review



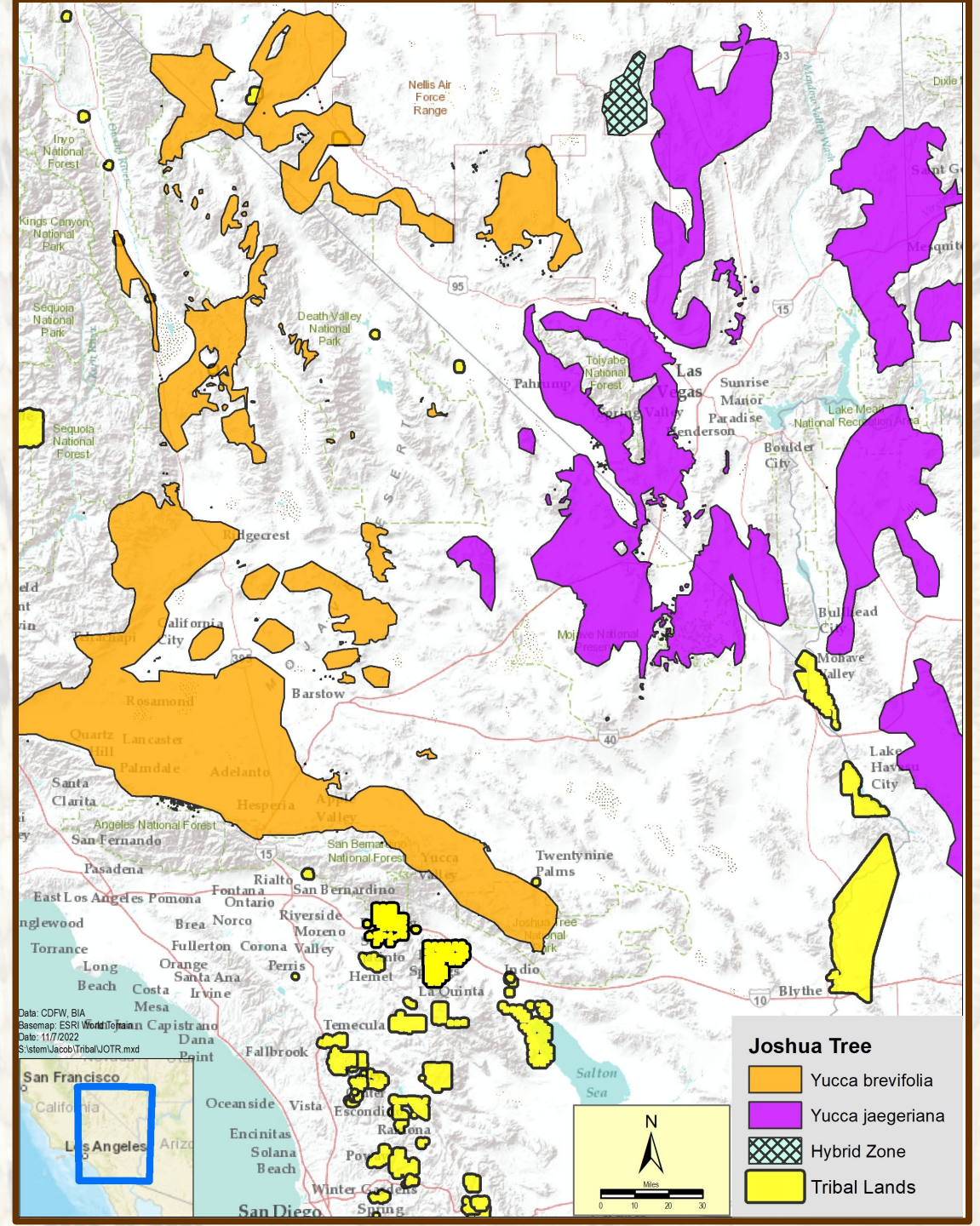
Hermes Copper Butterfly updated status review and Draft Recovery Plan



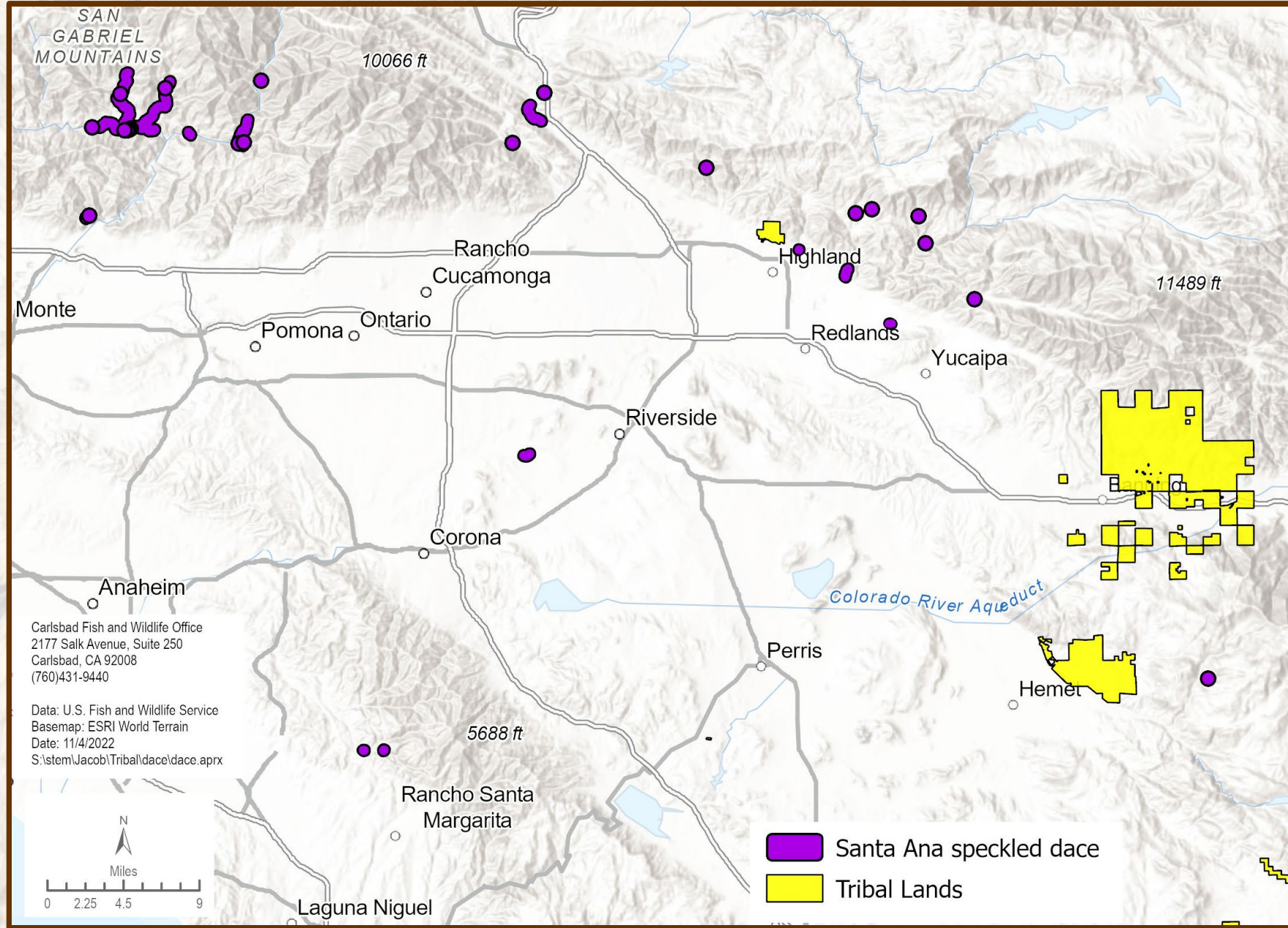
Inyo
California
towhee
Final
delisting rule



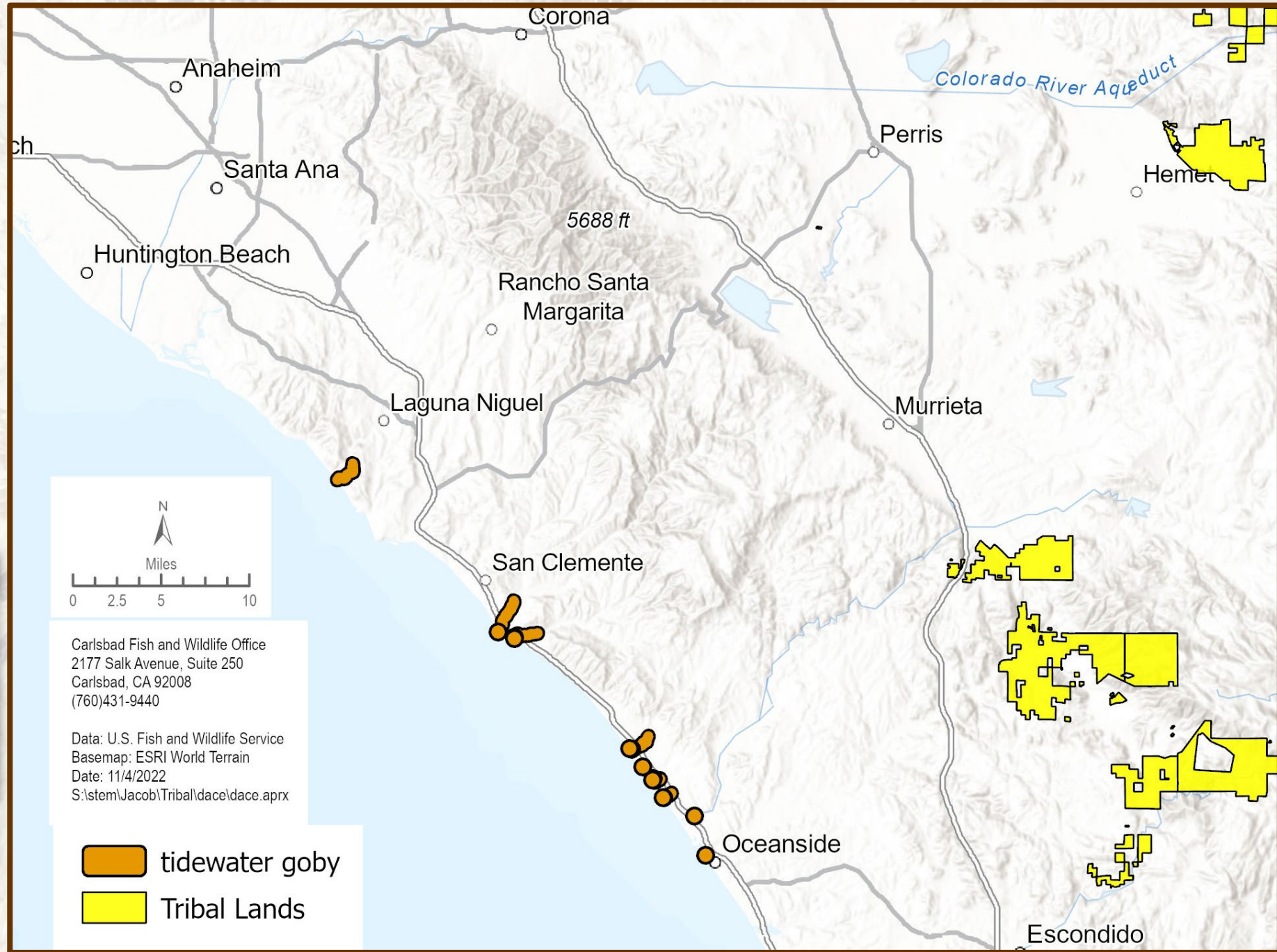
Joshua Tree Revised 12 month finding status review



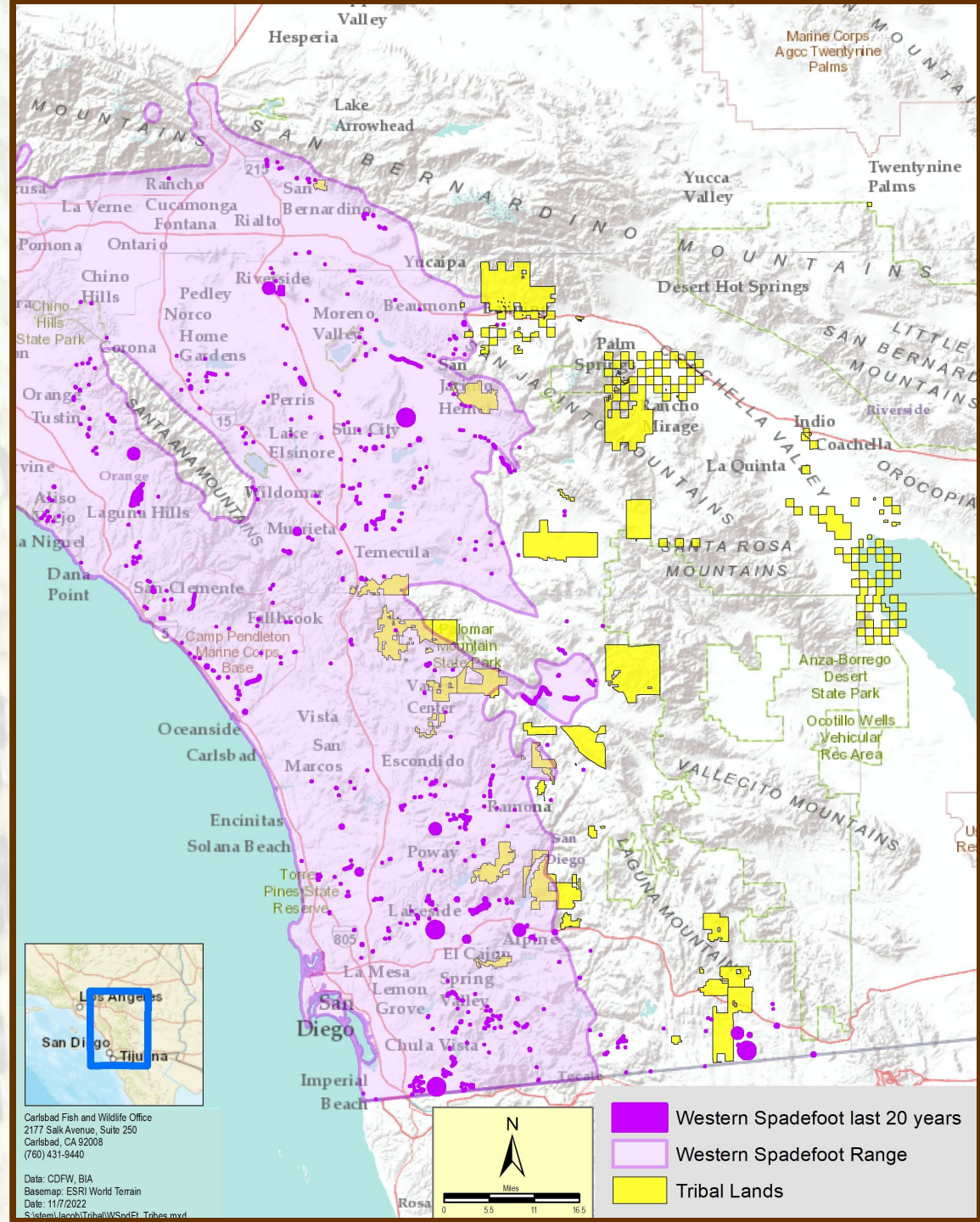
Santa Ana
Speckled dace
12 month finding
status review



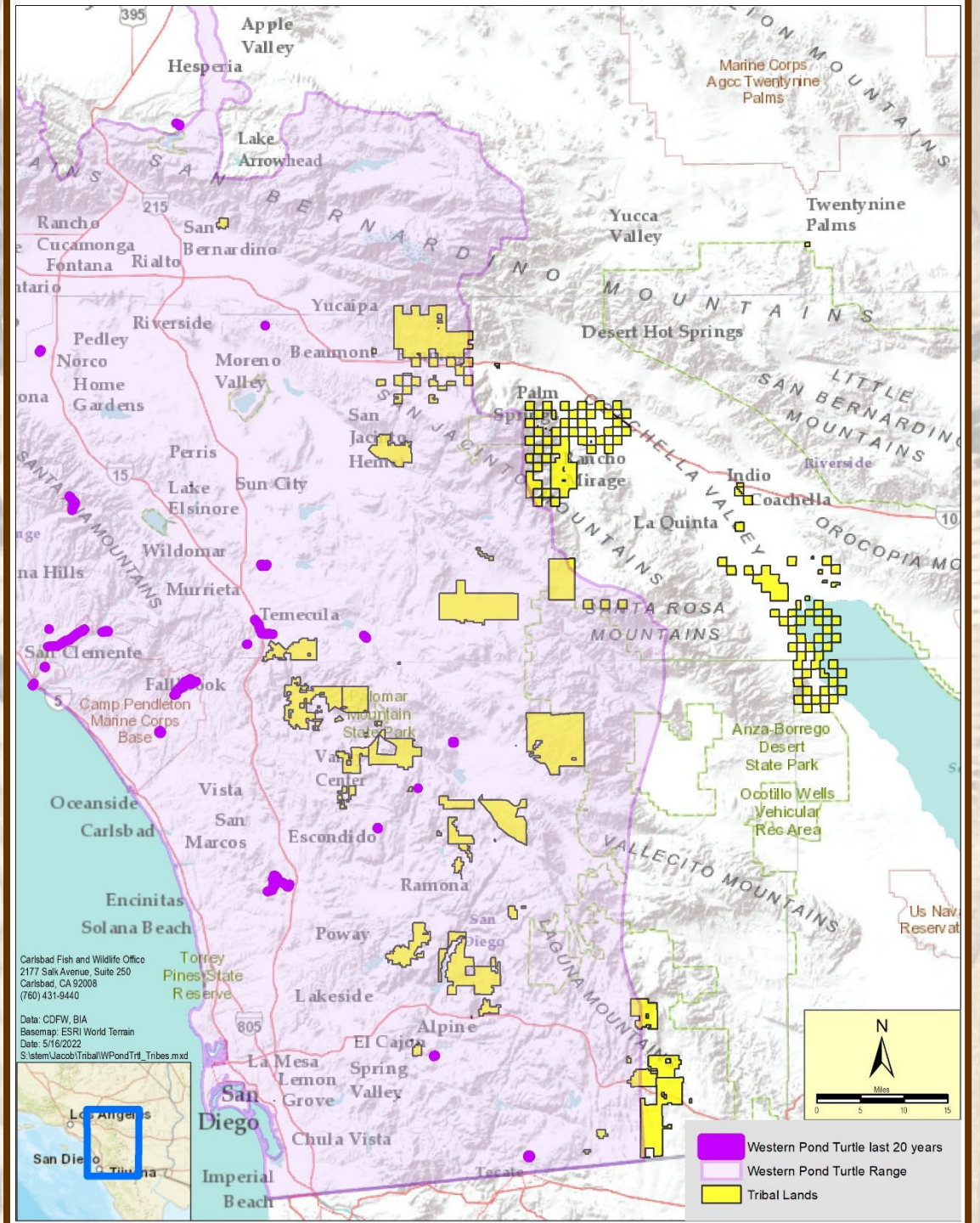
Tidewater
goby
Final listing
rule



Western spadefoot 12 month finding status review



Western pond turtle 12-month finding status review





Five-year status reviews expected FY 2023

Quino checkerspot butterfly
Coachella valley milk vetch
Santa Ana River woolly-star
Santa Ana sucker
Least Bell's vireo
Inyo California towhee
Lane Mountain milk-vetch
thread-leaved brodiaea
Del Mar manzanita
Otay tarplant
triple-ribbed milk-vetch
Coachella valley fringe-toed lizard
San Diego button-celery
San Diego mesa-mint

A circular woven basket, likely made of palm or similar natural fibers, featuring a complex geometric pattern. The design consists of concentric bands of black, white, and brown threads, creating a series of interlocking shapes that resemble a stylized sunburst or a series of nested rectangles. The basket is placed on a wooden surface.

Plata Cr dit:
Aurelia Mendez

Kumeyaay,
San Jose de la Zorra



Questions?