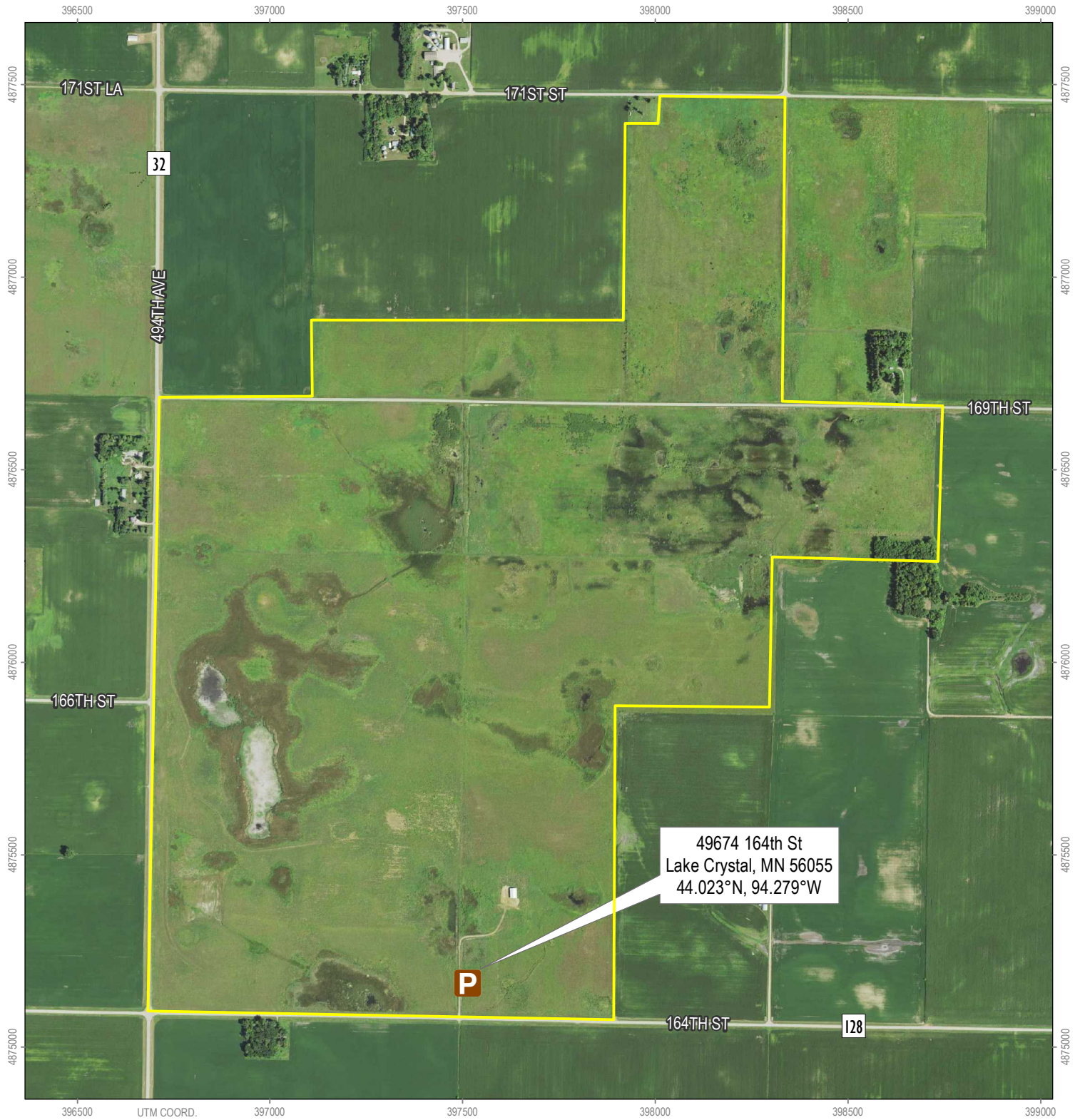




Minnesota Valley National Wildlife Refuge
Wetland Management District

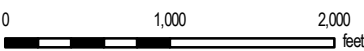
Lincoln WPA



- WPA Boundary
- Parking Lot
- County Road

Lincoln WPA (717.9 acres)

Lincoln Township, Blue Earth County
Twp. 107N; Rng. 29W; Secs. 26, 35 & 36



MATT MILLETT • AUG. 2018 • UTM ZONE 15N (NAD83)
SOURCES: MWNWR, MNDOT, USDA, BLUE EARTH COUNTY

Boundaries shown are approximate. Please adhere to all posted signs.

