

PUBLIC SCOPING INFORMATION SHEET
Preparation of an Environmental Impact Statement
for the Kaua‘i Island Utility Cooperative
Habitat Conservation Plan and
Incidental Take Permit/Incidental Take License

The Kaua‘i Island Utility Cooperative (KIUC) is preparing a habitat conservation plan (HCP) in support of its anticipated application for an **Incidental Take Permit** (ITP) under Section 10 of the Endangered Species Act (ESA) and an **Incidental Take License** (ITL) under Hawai‘i Revised Statutes (HRS) Chapter 195D. KIUC intends to implement the HCP to cover activities it will undertake in managing existing and future powerlines and lighting within the Plan Area that includes the full geographic extent of the Island of Kaua‘i (Figure 1).

The U.S. Fish and Wildlife Service (Service) and State of Hawai‘i Department of Land and Natural Resources (DLNR) are preparing a joint federal/state Environmental Impact Statement (EIS) to evaluate the impacts of issuing the ITP/ITL and implementation of the HCP. A **Notice of Intent** (NOI) to prepare an EIS in compliance with the National Environmental Policy Act (NEPA) and an **Environmental Impact Statement Preparation Notice** (EISPN) initiating preparation of an EIS under HRS Chapter 343 have been issued and are available for review. The NOI can be downloaded <https://www.regulations.gov/document/FWS-R1-ES-2022-0068-0001>; the EISPN can be downloaded at https://files.hawaii.gov/dbedt/erp/Doc_Library/2022-06-08-KA-EISPN-Kauai-Island-Utility-Cooperative-Habitat-Conservation-Plan.pdf.

KIUC anticipates requesting incidental take coverage for the Newell’s shearwater (‘a‘o) (*Puffinus auricularis newelli*), Hawaiian petrel (‘ua‘u) (*Pterodroma sandwichensis*), Hawai‘i distinct population segment of band-rumped storm-petrel (‘akē‘akē) (*Oceanodroma castro*), Hawaiian stilt (ae‘o) (*Himantopus mexicanus knudseni*), Hawaiian duck (koloa maoli) (*Anas wyvilliana*), Hawaiian coot (‘alae ke‘oke‘o) (*Fulica alai*), Hawaiian gallinule (‘alae ‘ula) (*Gallinula chloropus sandvicensis*), Hawaiian goose (nēnē) (*Branta sandvicensis*) and the Central North Pacific distinct population segment of green sea turtle (honu) (*Chelonia mydas*).

The requested ITP/ITL would authorize incidental take of covered species caused by KIUC’s operation, maintenance, and retrofit of existing and future KIUC facilities, maintenance and use of outdoor lighting, and implementation of KIUC’s proposed conservation strategy. Existing KIUC facilities covered by the HCP are shown on Figure 1. The locations of future lines are undetermined at this time. The Service’s **purpose and need** for action is to (1) process KIUC’s request for an ITP; and (2) either grant, grant with conditions, or deny the ITP request in compliance with the Service’s authority under applicable law including, without limitation, section 10(a)(1)(B) of the ESA and applicable ESA implementing regulations.

Public input on the proposed action and alternatives, scope of the analysis, and information concerning the covered species and other resources in the area is requested during the public scoping period that commences June 8, 2022, and ends July 8, 2022. Comments can be submitted via one of the following methods:

- *Internet:* <https://www.regulations.gov>. Follow the instructions for submitting comments on Docket No. FWS–R1–ES–2022–0068. Comments submitted through Regulations.gov must be received by 11:59 p.m. Eastern Time (5:59 p.m. Hawai‘i Standard Time) on July 8, 2022.
- *U.S. Mail:* Public Comments Processing; Attn: KIUC HCP EIS, Docket No. FWS-R1-ES-2022-0068; U.S. Fish and Wildlife Service Headquarters, MS: PRB/3W; 5275 Leesburg Pike, Falls Church, VA 22041-3803. Hardcopy comments must be received or postmarked on or before July 8, 2022.
- *Scoping Meeting:* Oral testimony can be provided at the virtual scoping meeting to be held on June 28, 2022, from 5:00 p.m. to 7:00 p.m. Hawai‘i Time. Access instructions for the virtual scoping meeting will be posted to <https://www.fws.gov/office/pacific-islands-fish-and-wildlife/events> at least one week prior to the scoping meeting date.

For further information contact: Koa Matsuoka, Pacific Islands Fish and Wildlife Office, by telephone at 808–792–9417 or by email at KIUCLongTermhcp@fws.gov. Individuals in the United States who are deaf, deafblind, hard of hearing, or have a speech disability may dial 711 (TTY, TDD, or TeleBraille) to access telecommunications relay services.

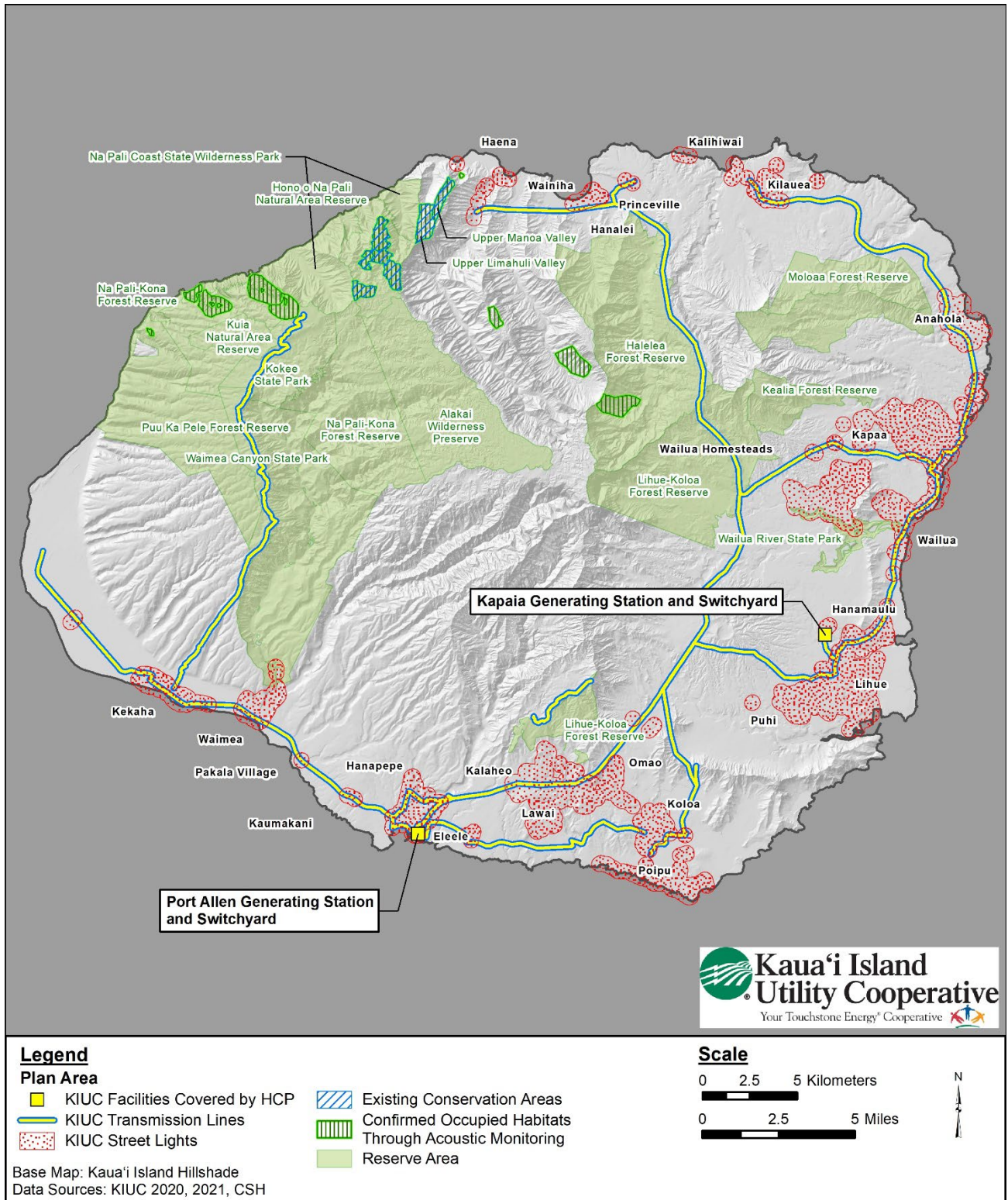


Figure 1. Map of Kaua'i showing existing KIUC facilities covered by the HCP, existing conservation areas, and occupied habitats confirmed through acoustic monitoring