



# LOWER SNAKE RIVER COMPENSATION PLAN



# FISH FOR THE FUTURE

MATT HOW GRAPHIC - USFWS



LYON'S FERRY DEGASSING COLUMNS

WHAT'S BEEN HAPPENING IN LSRCP

JULY/AUGUST 2021



# Lower Snake River Compensation Plan

FISH FOR THE FUTURE

## COORDINATOR'S CORNER

I hope everyone is having a great summer! I got an invite this summer to Lytle Denny's fish camp in a place that his father has fished since the 1960's. It was a great experience talking fish with Lytle and listening to his Dad tell stories about salmon runs gone by. Over the glowing embers of a campfire, he caught me with :

*"This place is dying. And none of you care"*

His words trailed off and left me in silence staring at fire, under the light of a million stars and an empty salmon stream running near by. It wasn't one of those moments that you argue with, even though my mind was racing in silent rebuttal, .

"Don't care? Of course we care!!" LSRCP alone has 190 people that live and breathe salmon! But as the uncomfortable silence continued, I kept reflecting. This place is dying. The stream was bent around an established campground, car headlights cut the night down the twisting blacktop, and we sat around an iron fire ring. In a lot of senses, change and dying are interlinked. And do we care? Well, I sure feel like we care.

But, then again, our caring in this spot was to "mitigate" our tangible loss of salmon. To that end, we've struggled to maintain our promise. And actions certainly speak louder than words.

I left the fire still deep in thought and joined the futile fishing expedition. Lanterns burned, a fire smoldered, and the pre-dawn revealed empty spears.

We'll keep trying, I promise.

-Nate



*This place is  
dying.  
And none of  
you care.*

- Elder Denny

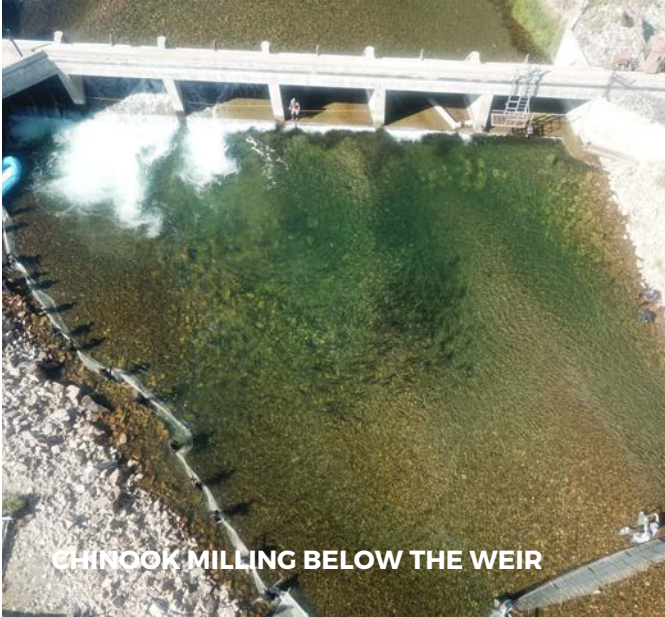




# SAWTOOTH CHINOOK ROUND-UP



SAWTOOTH ROUND-UP. PHOTO LYTLE DENNY, SBT, DRONE



CHINOOK MILLING BELOW THE WEIR

I'm always amazed by the dedication, creativity, and persistence of our Fisheries employees. This was reinforced on my participation at the "annual" Chinook round-up at the Sawtooth Fish Hatchery weir. For several years now, low returns and a shifted river channel have meant needed broodstock at Sawtooth are at a premium. However, a significant number of Chinook have decided the pool below the weir is a fine place to mill around without fully entering the fish trap.

Using techniques borrowed from the Sockeye program, staff from around the IDFG program and Shoshone-Bannock Tribe donned wetsuits and seined the reluctant fish onto waiting fish trucks. The operation is exceptionally labor-intensive. Almost 60 personnel participated this year. But, the effort yielded an almost 10% bump in overall adult numbers and will likely push Sawtooth's adult total over the minimum needed to make broodstock goals. Coupled with the team-building exercise of hard labor in chilly waters, it's no wonder curious on-lookers kept remarking on how impressed they were by the individuals involved. Nice work!

	Disposition		Total
	Ponded	Released	
Hatchery-Integrated	5	8	13
Adult		8	8
Female		1	1
Male		7	7
Jack/Jill	5		5
Male	5		5
Hatchery-Segregated	155		155
Adult	74		74
Female	38		38
Male	36		36
Jack/Jill	81		81
Male	81		81
Natural		57	57
Adult		52	52
Female		19	19
Male		33	33
Jack/Jill		5	5
Male		5	5
<b>Total</b>	<b>160</b>	<b>65</b>	<b>225</b>



ROUNDED UP AND NETTED ONTO TRUCKS





# PAHSIMEROI HATCHERY

## Pahsimeroi Quick Facts:

- 1M Smolts (65K Integrated, 935K Segregated)
- DI Max = 0.3 (Early and Final Rearing)
- Early Rearing Water = 50 F well water (chilled for incubation)
- Target Size = 15 fpp
- Unique Fact = All early rearing tanks are 100% baffled - something Doug and crew say is a game changer

Chris Starr and I had a chance to visit with Doug Engemann and Stuart Rosenberger at Pahsimeroi Hatchery this summer. The renovation work over a decade ago still looks really good and its a nice facility. They've got a tremendous amount of early rearing space which keeps density index targets at 0.3 for early rearing to 110 fpp for marking. The goal is to get the fish large enough and stress-free to enter the large rearing lakes on river water. Once in the rearing lakes in late May/early June, the fingerlings have about a month before summer temps elevate and require every other day formalin treatments (167 ppm) for Ich and Mycosis. Water temps usually start to decrease by mid-August and treatments can cease.

Pahsimeroi is still challenged by Bacterial Kidney Disease (BKD) especially with stringent fish health policies on prophylactic treatments. The Pahsimeroi staff has been working closely with fish health and INAD staff to come up with strategies to keep BKD from causing epizootic mortality in the future. Hopefully that pays off in future years!



CJHRIS STARR AND DOUG ENGEMANN - TWO MICHIGAN ALUMUNI



PAHSIMEROI OUTDOOR REARING



INDOOR REARING VATS



# YANKEE FORK ACCLIMATION

SPECIES	TODAY 8-1	2021 SEASON	2020 SEASON
CHINOOK - HATCHERY	0	34	10
CHINOOK - NATURAL	0	23	27
CHINOOK - TOTAL	0	57	37
BULLTROUT	0	19	37
SOCKEYE	0	19	8
WHITE FISH	0	0	0

I really like the white board sign at the Pole Flat weir. It has simple message. Here's how many fish we got last year and here's how many we have so far this year. At first glance, there's some success in 2021. By my estimation, we've gotten a 3-fold increase in Hatchery Chinook past the weir in 2021.

I wish that was the only story here. But, no matter how you add these numbers up, we are woefully below where the program needs to be, the habitat could support, and the needs of the upper ecosystems.

I use the metaphor of "Add Zeroes" a lot lately. Imagine if we added "two" zeroes to every number on this whiteboard. That would be a big difference. Could the habitat support it? Would the ecosystem utilize those thousands of returning salmon? I think so.

Now imagine adding "three" zeroes. Really? 10's of thousands of salmon to the upper reaches? Possible? Probable? Supportable? Or even believable?

Our baseline has shifted a long ways in 40 years. How can we keep shooting for targets that seem unreachable? There aren't any easy answers there, but we need to keep stretching ourselves towards those levels even if the majority of us have never personally experienced them.



The Shoshone-Bannock Tribe (SBT) is working on enhanced acclimation strategies in the Yankee Fork drainage. The challenge is to get more adults to acclimate to the Yankee Fork and not swim the 15 miles upstream to the Sawtooth Fish Hatchery where they spent the majority of their juvenile life.

Turning Chinook into the Yankee Fork spreads them into SBT fisheries, but also places them into areas that have been intensively rehabilitated for salmon habitat. Shifting adults into available habitat with added zeroes on their total numbers has the potential to begin turning the salmon paradigm. Fingers crossed it works!





MANAGER DIANE DEAL

# LOOKINGGLASS STAFF

When I chatted with Diane Deal about highlighting one of her staff, she said, "they are all amazing," I really couldn't agree more. We've got amazing staff across the entire program!

Diane elaborated more that Lookingglass and several other facilities have had personnel shortages: Chase and Jason jumped in to help E. Region with liberations due to unexpected personnel shortages there, and even though we were short personnel here, the crew just knuckled down and helped each other even when things were a little overwhelming. They showed up at the hatchery voluntarily on days off to plow and remove snow – Connor has been working with Roy Skendzel FOS 2 from Irrigon FH to do upgrades around the hatchery – Chase was in the middle of everything even though he was new to the program. Paul was back-up for everyone. Thanks Diane and the Lookingglass staff for a job well-done!



PAUL MCCARREL WITH BROODSTOCK



CHASE KOZLOWSKI PUNCHING REPORTS

**I HAVE AN AMAZING CREW  
- DIANE DEAL**



CONNOR BOOLEN AND JASON  
WINTERSTEEN ON THE EGG TABLE