

John H. Chafee National Wildlife Refuge (*NWR*)

Big Game Hunting Program for 2023-2024



The U.S. Fish and Wildlife Service will provide archery-only big game hunting opportunities at John H. Chafee National Wildlife Refuge (refuge) during the 2023-2024 refuge hunting season. Hunting opportunities include white-tailed deer, wild turkey (fall season only), coyote, and fox, with some season and weapon restrictions. State safety regulations apply. Refuge hunt units are shown in Figures 1a - 1d. Hunters may not discharge weapons into, from, or within a hunt safety zone. Safety zones for archery hunting include areas within 200 feet of a dwelling. Hunters may pass through safety zones on their way to hunt unit, but weapons must be unloaded in the safety zones. Some, but not all, safety zones are marked in the field. It is the hunter's responsibility to know where safety zones are located.

2023 - 2024 Program Details:

- ARCHERY-only hunting for white-tailed deer, during the State archery season on designated hunt units. Deer hunters may take fox and coyote during the deer season (September – January).
- ARCHERY hunting for wild turkey, during the State fall archery season, on designated hunt units (October). **Spring wild turkey season is closed on refuge lands.**
- Hunters must obtain, sign, and carry a valid Refuge Big Game Hunting Brochure for each season to serve as written permission to access refuge units for hunting.
- All hunters must obtain and carry the State Archery Proficiency Certification.
- No parking allowed on refuge lands adjacent to Crest Avenue.

Safety measures employed:

- All hunters must have a valid State hunting license, which requires a [hunter education course](#);
- All hunters for deer, turkey, coyote, and fox must have a Rhode Island Archery Proficiency Certification;
- No discharge of archery equipment within 200 feet of a dwelling, and no discharge from or across a road;
- Hunters will be provided maps of safety zones and hunt unit boundaries to aid in navigation;
- No hunting in safety zones;
- The public will be alerted to annual hunting seasons with news releases, and website/Facebook postings;
- The hunting program will be monitored and have adjustments made as deemed necessary.

Figure 1a. Middlebridge Unit Big Game Hunt Map, John H. Chafee National Wildlife Refuge. Hunt maps were created using GIS mapping for informational use, not for legal purposes.

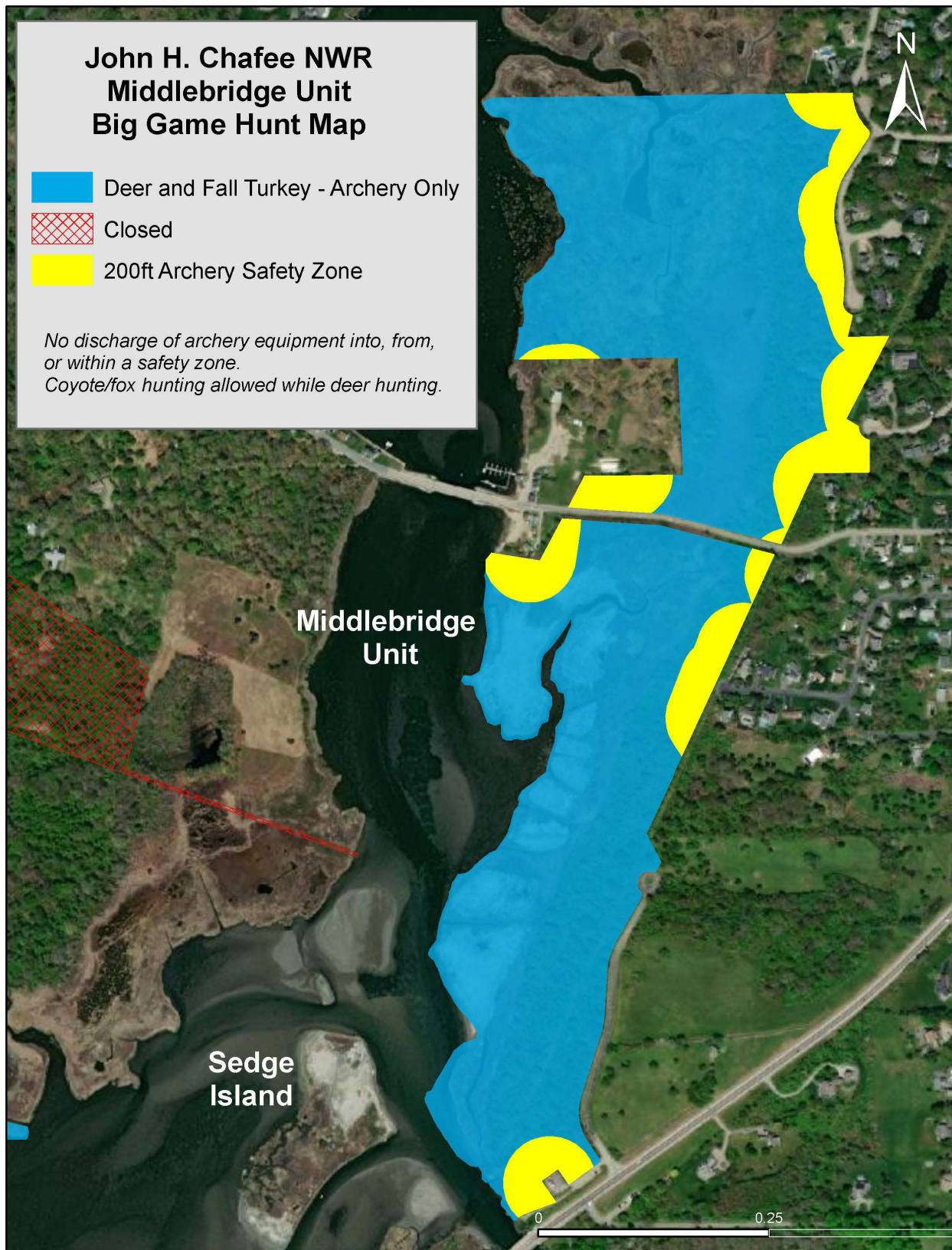


Figure 1b. Starr Drive Unit Big Game Hunt Map, John H. Chafee National Wildlife Refuge. Hunt maps were created using GIS mapping for informational use, not for legal purposes.

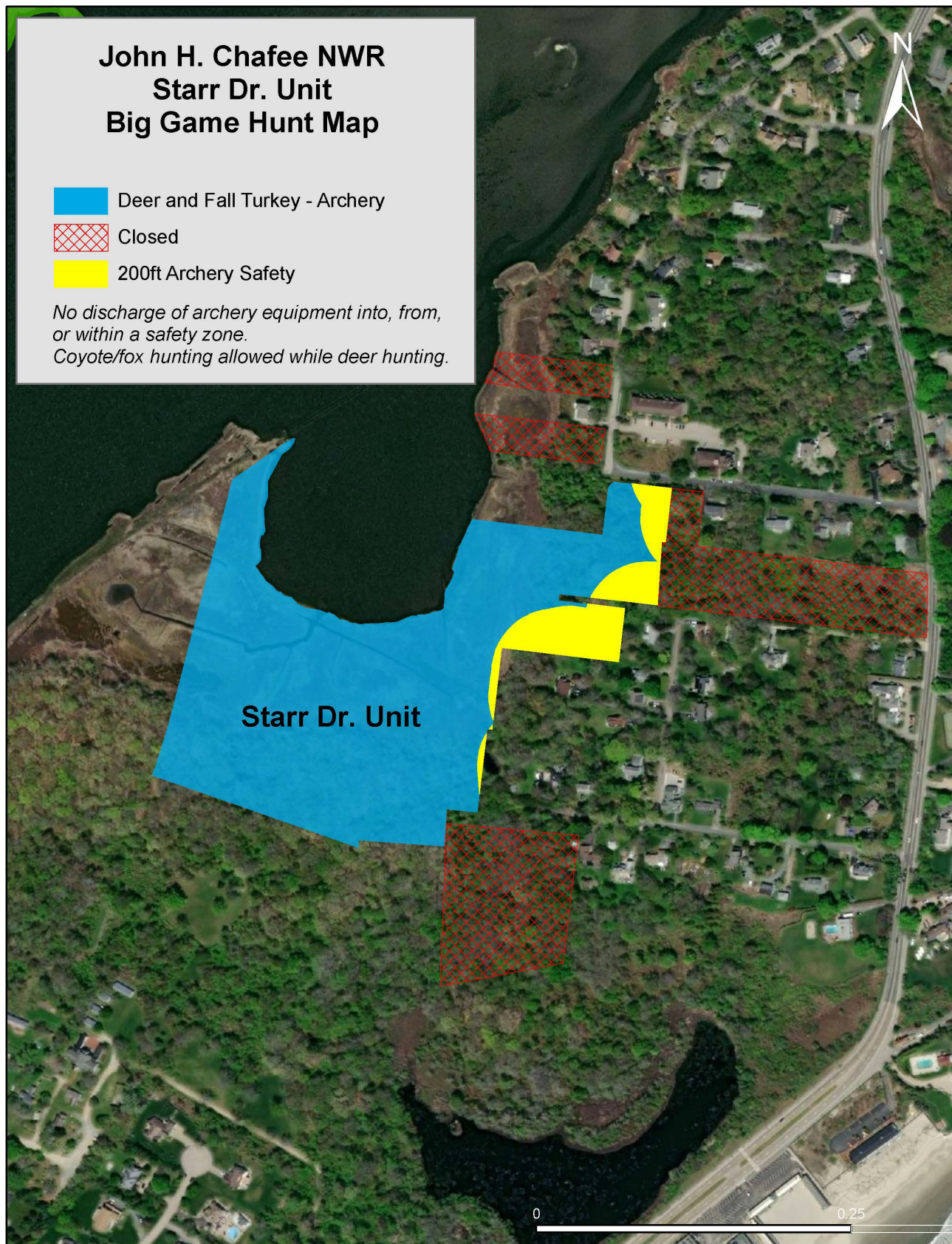


Figure 1c. Stedman Unit Big Game Hunt Map, John H. Chafee National Wildlife Refuge. Hunt maps were created using GIS mapping for informational use, not for legal purposes.

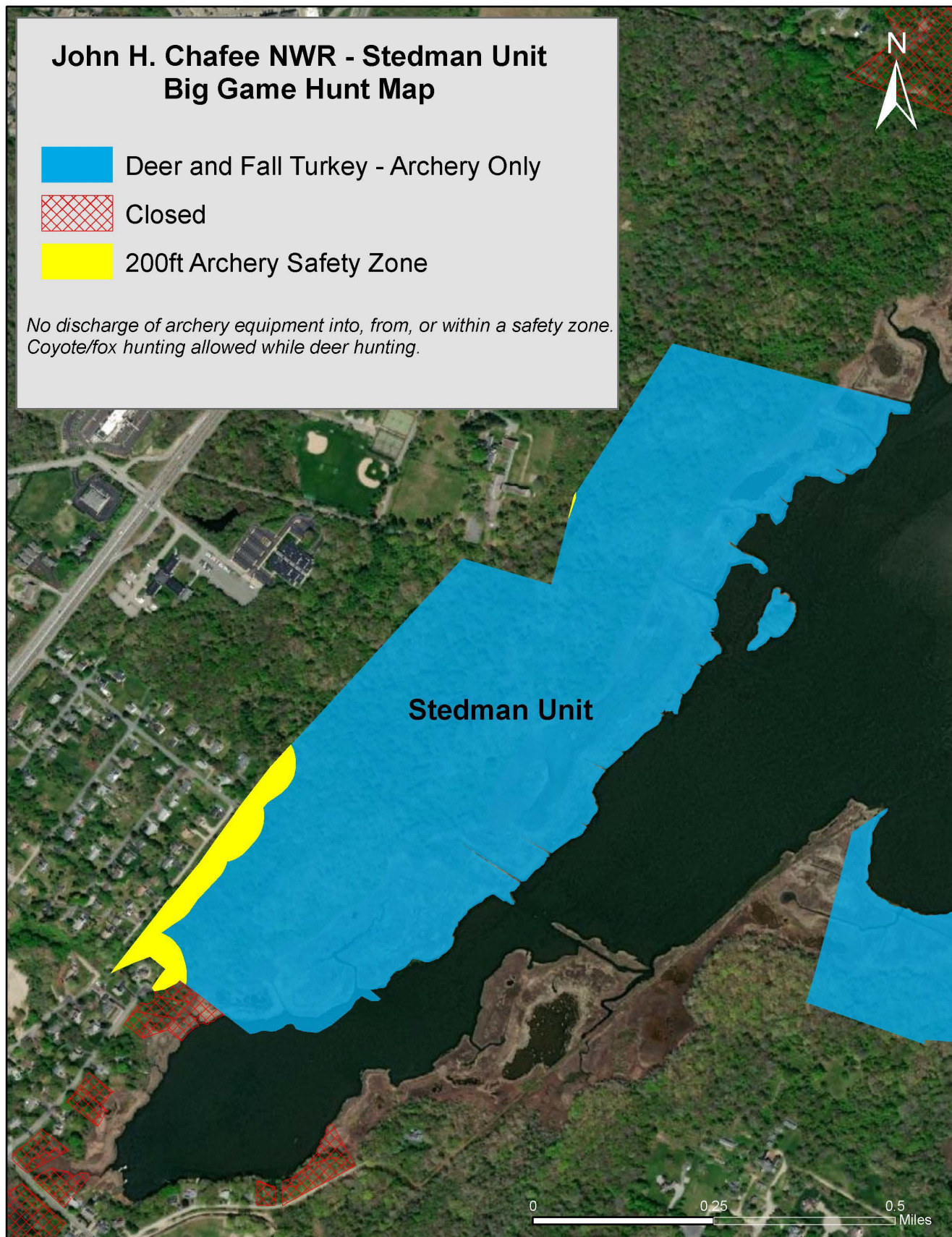
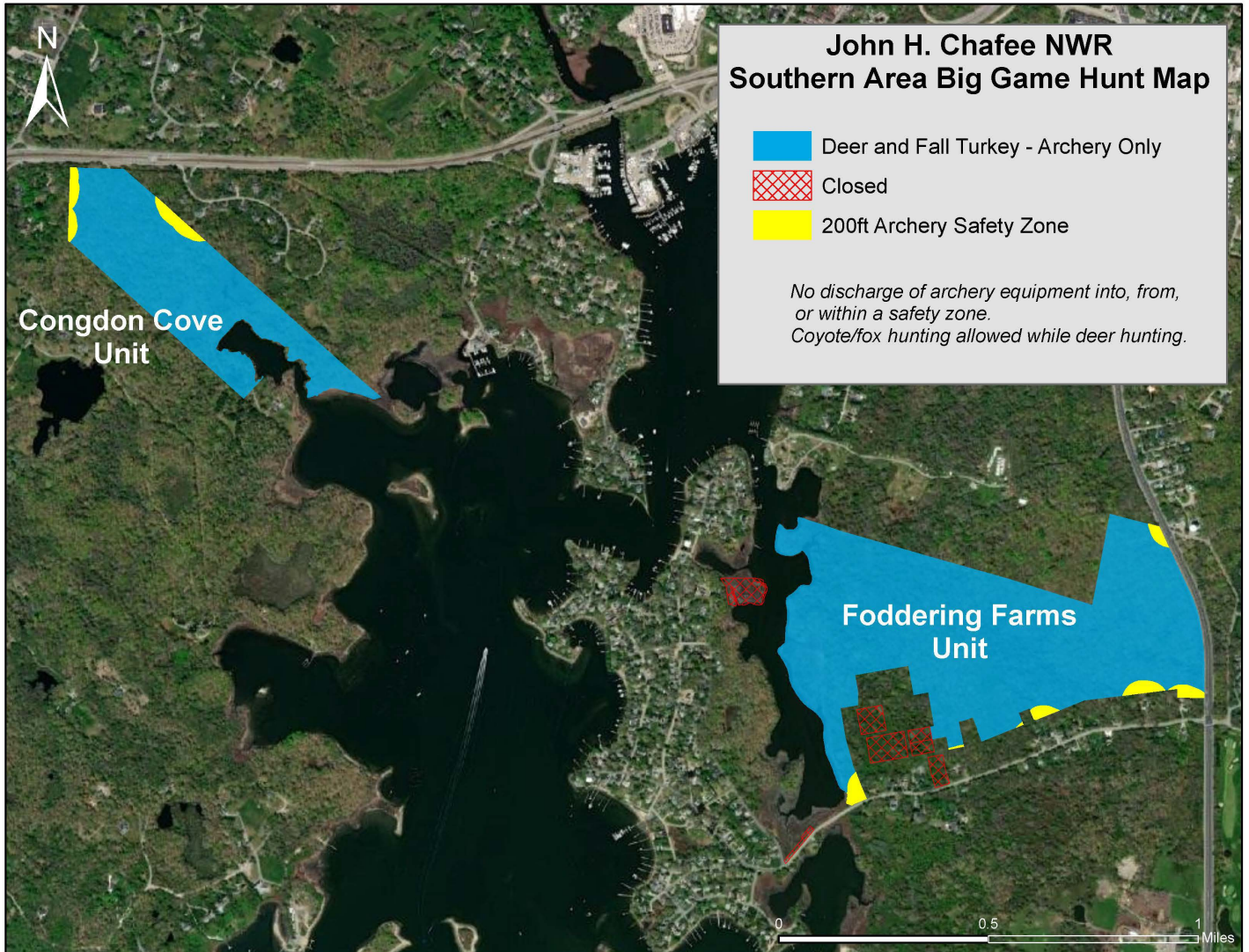


Figure 1d. Congdon Cove and Foddering Farms Units Big Game Hunt Map, John H. Chafee National Wildlife Refuge. Hunt maps were created using GIS mapping for informational use, not for legal purposes.



Please call the refuge at 401-364-9124 if you have any questions.

