

Willapa National Wildlife Refuge Complex



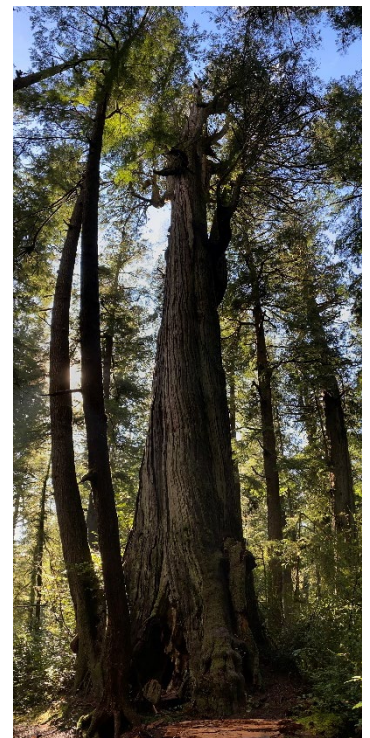
2023 Internship Opportunity **Applications Due: Sunday, April 23, 2023**

The Willapa National Wildlife Refuge Complex is recruiting one full-time (40 hours/week) intern to contribute to our Biology and Visitor Services programs. The intern will gain hands-on experience alongside park rangers, wildlife biologists, refuge managers, and others.

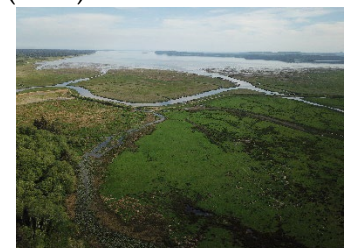
Biology & Visitor Services Intern **~ June 1 – October 15, 2023**

The Biology & Visitor Services Intern will have the unique opportunity to work across multiple departments, gaining experience and knowledge in variety of refuge programs. The intern will assist the refuge biology team by participating in shorebird surveys, green crab trapping, invasive species surveys, and mapping efforts. As well as tree plantings, native coastal prairie plant restoration, and invasive plant removal. The intern will also work with the visitor services team to implement the Wings Over Willapa annual bird festival, coordinate volunteers, and begin planning efforts for the environmental education program. There will also opportunities to lead nature hikes, do outreach in the local community, and contribute to social media.

Willapa National Wildlife Refuge Complex is comprised of three refuges: Willapa, Julia Butler Hansen, and Lewis & Clark. Located in southwest Washington on the Pacific Coast, there is a great diversity of habitats and wildlife. Refuge habitats include beach, costal dunes, prairie, tidal wetlands, and forest. Hundreds of thousands of migratory birds utilize the refuge each spring and fall. There are over a dozen species of amphibians, as well as mammals such as river otter, black bear, deer, and elk. Please visit our website to learn more: fws.gov/refuge/willapa



Long Beach, WA is a small coastal town that has a large tourist industry and plenty of outdoor recreation opportunities. There are other public lands (including state and federal) that offer hiking, wildlife observation, and boating. On-refuge housing is available and is located in Cathlamet, WA, a small town located along the Columbia River. It is a one-hour drive to the main office (work vehicle provided & carpool opportunities may be available). The nearest larger cities are Longview, WA (~30min) and Astoria/Warrenton, OR and Portland, OR (~1hr).



Internship Qualifications:

- Youth hire, must be between the ages of 18-30 (35 for veterans)
- Ability to work independently and in small teams; have good observational and communication skills
- Ability to work with people from diverse racial, ethnic, and socioeconomic backgrounds
- Ability to work a flexible schedule, including some weekends and morning/evening shifts
- Undergrad coursework in biology, environmental science, recreation & park management, social science, communications, or related
- U.S. citizen, national or lawful permanent resident
- Valid driver's license

Compensation & Benefits:

- \$1,600 monthly living stipend
- Free co-ed bunkhouse style lodging with laundry and utilities included (sorry, no pets) located at Julia Butler Hansen Refuge in Cathlamet, WA
- Professional development, training, and networking opportunities
- Work vehicle and equipment provided (Intern is responsible for personal transportation needs; having a personal vehicle is necessary)
- May receive Public Lands Corps (PLC) non-competitive hiring status upon completion of 640 hours of qualifying work

How to Apply:

Email application package as a single PDF file to Hope Presley at hope_presley@fws.gov by April 23, 2023, that includes:

- Cover letter that addresses the listed qualifications as well as interest in the position
- Resume documenting your work and volunteer experience, education, skills, interests, contact information, etc. (please keep to two pages)
- Contact information for three professional references (please include email and phone number for each)

Please save and send your application package as WNWRC_InternApp2022_LastFirst

Interviews will be held during the week of May 1 and/or May 8.

The U.S. Fish and Wildlife Service values diversity, equity, and inclusion and highly encourages applications from people of color, women, people from all socioeconomic backgrounds and abilities. USFWS does not discriminate on the basis of race, color, religion, sex (including pregnancy and gender identity), national origin, political affiliation, sexual orientation, marital status, disability, genetic information, age, membership in an employee organization, retaliation, parental status, military service or other non-merit factor.

For Questions or More Information:

Hope Presley
Visitor Services Specialist
hope_presley@fws.gov

Willapa National Wildlife Refuge Complex
7112 67th Place
Long Beach, WA 98631
(360) 642-3860

