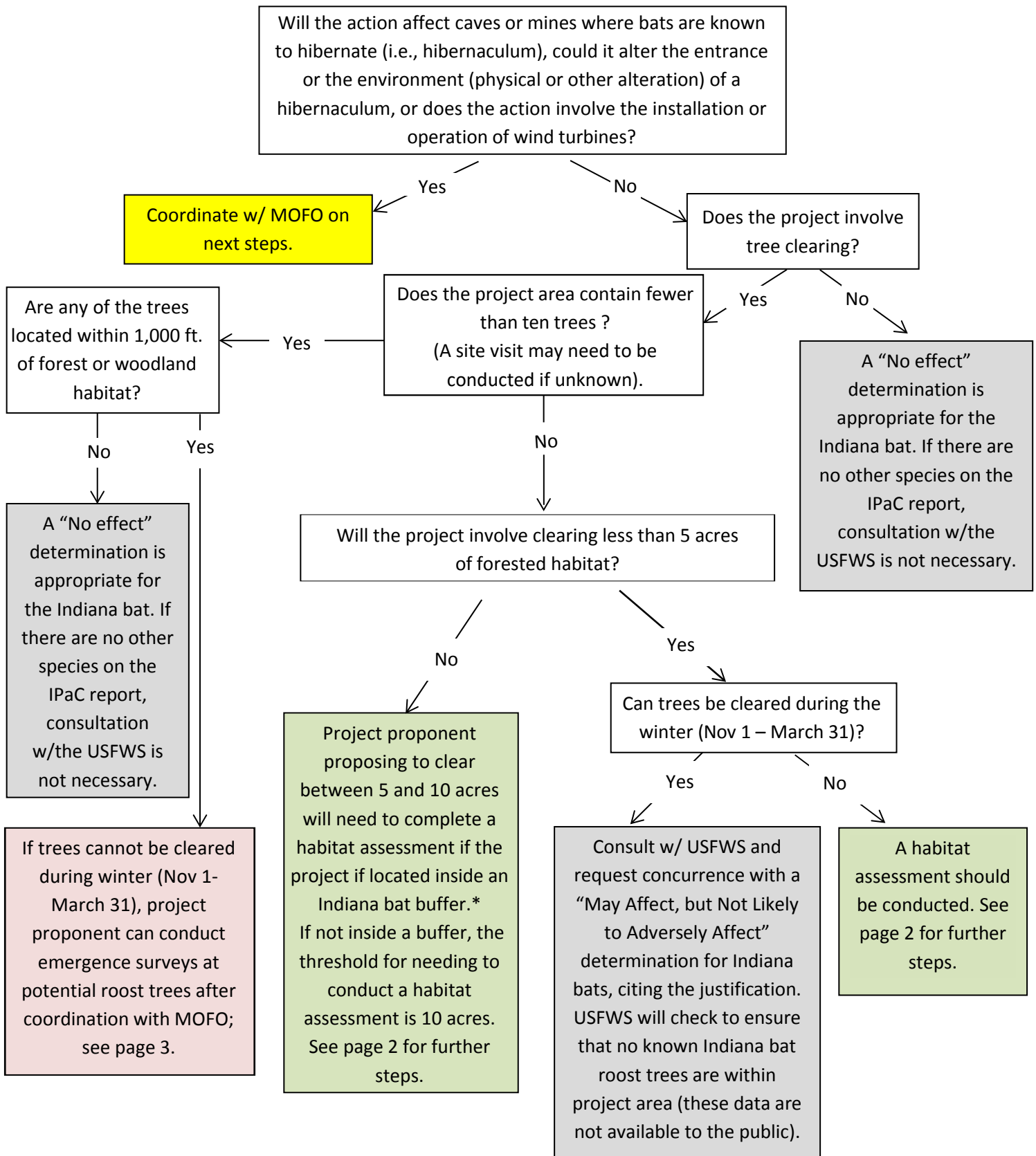
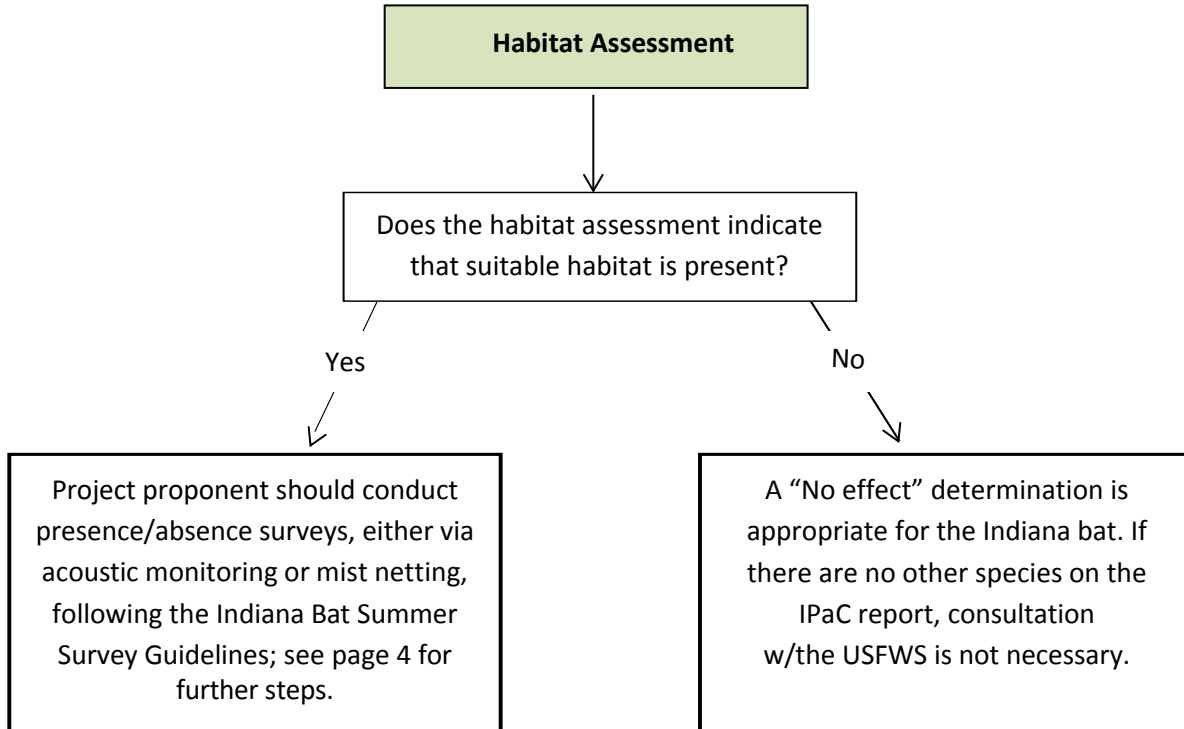


Decision Tree for Indiana Bat Consultations Missouri Ecological Services Field Office (MOFO)

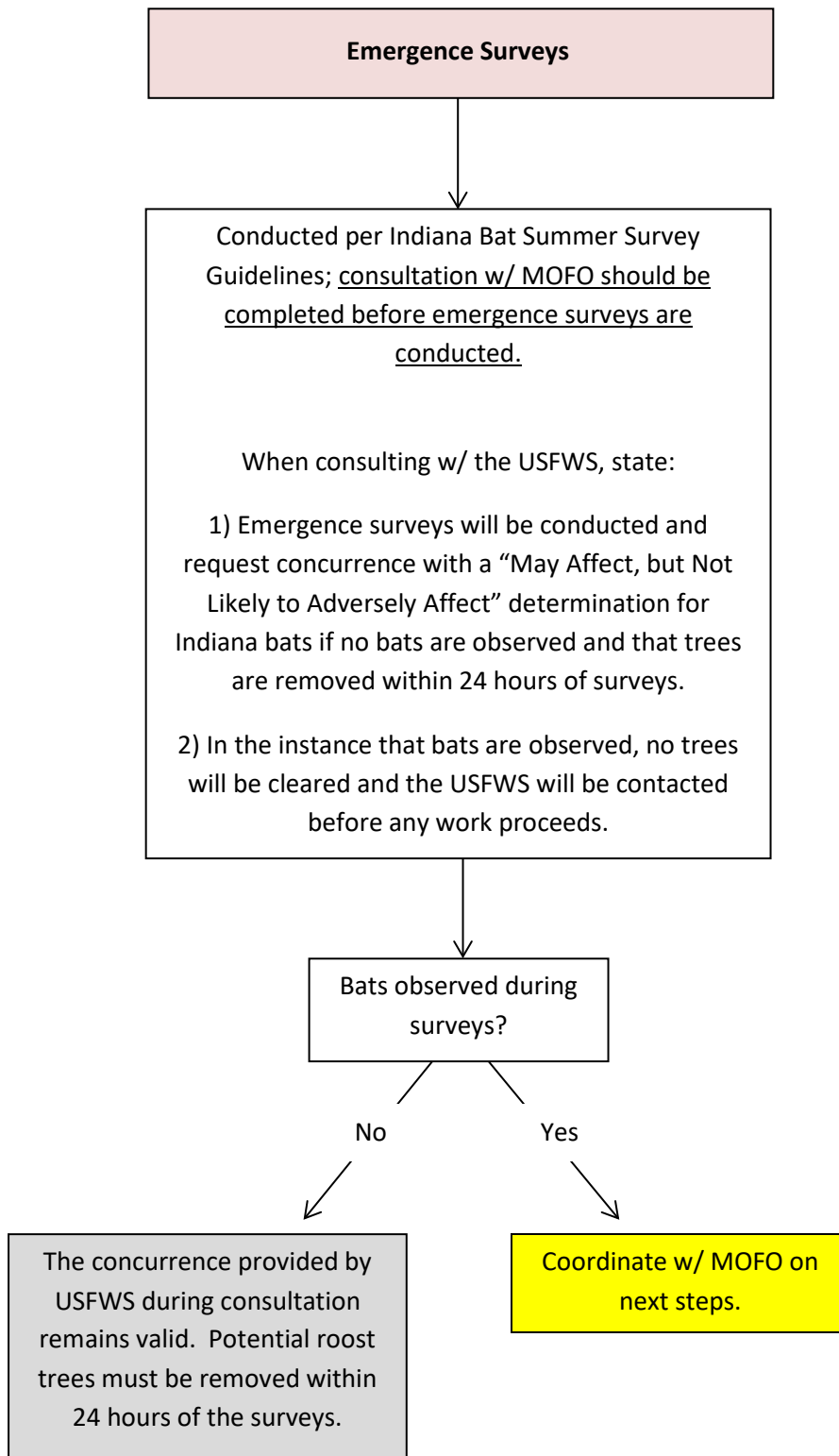


*An Indiana bat buffer is the area within a 5-mile radius of a known summer occurrence (e.g., known roost trees, capture locations, or foraging locations). Contact MOFO to determine if your project is within the Indiana bat buffer. Please note that buffers frequently change as we receive updated information.

Indiana Bat Consultation Decision Tree – Habitat Assessment



Indiana Bat Consultation Decision Tree – Emergence Surveys



Indiana Bat Consultation Decision Tree – Presence Absence Surveys

