



International Law Enforcement Academy Gaborone, Botswana



"Empowering Those Who Serve"

ILEA Gaborone Quarterly

August 2021

Newsletter



Directors' Message
Joseph Augeri and Maseng Mathiba



We have already reached the halfway point of 2021 and we continue to identify, confront and overcome the constraints posed by COVID-19! As we transition into the second half of the year, ILEA Gaborone has been encouraged and energized by the steadfast partnership and level of engagement exhibited by our Partner Nation participants and growing Alumni Community. We continue to design and implement new and interesting virtual programming in cooperation with our U.S. law enforcement and Criminal Justice agency partners as we strive to work with you countering regional law

enforcement challenges through world class training delivery! We will continue to invite participation by our regional partners as we schedule and coordinate virtual programming for the months ahead. ILEA Alumni, please visit our Facebook Page, Website and IGN/Alumni Portal for the latest news and announcements. Stay safe and healthy!



Alumni in Focus

Mr. Makumi from Kenya



My name is Ian M. Makumi from Kenya. I am a Detective Constable based at the Directorate of Criminal Investigations under a department named the Serious Crimes Unit. My duties entail conducting investigations relating to serious crimes, i.e., fraud, money laundering, homicide, wildlife crimes, transnational crimes, and corruption cases. I routinely collaborate with other enforcement agencies to ensure there is law and order, and I liaise with the Directorate of Public Prosecutions to ensure the successful prosecution of offenders.

I take this golden opportunity to appreciate ILEA Gaborone for having nominated me to be part and parcel of the Alumni team. ILEA has taught me the essence of teamwork through their virtual trainings. I attended a virtual training on Basic Introduction to Cryptocurrency that was hosted by ILEA Gaborone on October 2020. The skills I acquired from the training have enhanced the quality of my investigative techniques and enabled me to develop fellow colleagues in cryptocurrency investigations and what that really entails. I am looking forward to participating in future ILEA trainings, and focusing on these new and evolving trends in criminal activity and what may emanate from these developments. My gratitude once again goes to ILEA Gaborone for inviting me to be part of the pilot team that was testing the ILEA Alumni Portal. I must admit that the portal is friendly and I'm looking forward to using it for updates on the activities and trainings that are planned and to engage in discussions with other alumni.

I appreciate the opportunity ILEA has granted me and the experience I have attained, and I thank you all, and be blessed.

The Importance of Physical Fitness



Physical fitness is vital to law enforcement officers and those who support them. Whether an individual is training staff, administrative support, or a family member, everyone benefits from proper physical fitness and a healthy lifestyle. Proper fitness and diet increase and maintain physical, emotional, and intellectual functioning and reduces stress and anxiety. The International Law Enforcement Academy (ILEA) in Gaborone, Botswana has taken initiative to improve participants' training experience and academy staff's morale with a new fitness center.

ILEA Gaborone listened to participant's comments and feedback.

One comment frequently mentioned was the lack of, or difficulty accessing a physical fitness facility. While there is a gym complex on the Botswana Police College compound, the location is not convenient to ILEA Gaborone, and it is often utilized by Botswana Police Service recruits for their training. Through a collective effort by ILEA Program and Management Personnel a gym and physical fitness equipment were procured, and a convenient location prepared. Everyone now attending a course or supporting operations at ILEA can begin or continue their fitness regimen. ILEA Leadership worked extensively with the ILEA Finance Department to identify equipment, source vendors, and order items to accommodate the needs of program participants and ILEA employees.

All ILEA staff members worked together to decide what equipment was required to meet the needs of both beginners and those with more advanced work-out routines. Managing Leadership, in conjunction with ILEA Facility Maintenance, renovated an unused "break-out" room for the new gym. Three ILEA employees volunteered their weekend to supervise the delivery, assembly, and configuration of the new equipment. ILEA Gaborone is excited to be able to offer incoming participants, U.S. Agency instructors, and permanent staff the opportunity to improve at every level. A new gym is just one of the available opportunities for self and team improvement. **Train safe and smart!**

Nelson Mandela Bay Metro Police Department's ILEA Experience

ILEA Alumna's Experience - Chief Faro

What an honour! We are part of an international law enforcement family (fraternity). The word family is used particularly, because that is what ILEA has given us. Since June 2019, the Nelson Mandela Bay Municipality Metro Police Department (NMBMPD) has been fortunate to send 22 members to participate in law enforcement programs with multiple ILEA branches. We have attended in-person training at ILEA Gaborone and ILEA Roswell, and, since the onset of COVID-19, have participated in virtual training.



The training programs we have attended are:

- Human Trafficking
- Fraudulent Documents
- Crime Scene Investigations
- Cyber Crime Investigations
- Domestic Violence and Gender Based Violence
- Regional Advanced Narcotics
- Executive Policy and Developmental Symposium on Transnational Organised Crime
- Executive leadership and Major Case Management
- Public Corruption and Case Studies
- Introduction to Computer Systems

Something that sets the ILEA experience apart from other training programs is the excellence in which the programs are presented. The title of excellence is not lightly stated and has been awarded due to the:

- Staff/facilitators
- Equipment/platforms
- Ease of transition to virtual training
- Support
- Networking opportunities provided on the training platforms

Being part of a family that spans across the globe is a major achievement and it would have not been possible without ILEA. Nelson Mandela said "the journey of a thousand miles begins with one step." Our journey to a professional law enforcement service started with our ILEA experience.

As members of NMBMPD our functions and roles within the South African law enforcement arena are highly regulated and unique. The roles of Metro Police Services are traffic policing, by-law enforcement, and crime prevention. These are achieved by managing crowds and responding to domestic violence incidents.

Our role as Metro Police/Municipal Police reminds us that the South African Police Service (SAPS) is South Africa's (SA) national police service. Whereas Metro Police Departments (MPD) are a local government policing service bound by municipal/metropolitan jurisdiction. All members of the Metro Police Service are peace officers, and therefore possesses arrest, seizure, and enforcement authority.



The main authorities of SAPS are derived from the Constitution of SA in 1996 and are listed in Section 205(3) as:

- The national police service must be structured to function in the national, provincial and, where appropriate, local spheres of government.

- National legislation must establish the powers and functions of the police service and must enable the police service to discharge its responsibilities effectively, taking into account the requirements of the provinces.

- The objects of the police service are to prevent, combat and investigate crime, to maintain public order, to protect and secure the inhabitants of the Republic and their property, and to uphold and enforce the law

- The SAPS Act enables legislation of the Metro Police, and Section 64E of the SAPS Act provides its functions.

The NMBMPD is the youngest of all the MPD in SA. It is also the first to have a female Commissioner of the Municipal Police.

Being the newest MPD provides our growth to be greatly influenced by our strategic partnerships. ILEA

has assisted the NMBMPD in becoming a leader and a force to be reckoned with in relation to international partnerships. ILEA connections bolster the stature of the NMBMPD and open the pathway for other MPDs to follow. The experience ILEA provided expanded our footprint and fostered friendships, partnerships, and professional connections. This aids policing in SA.

New Team Member

Callie Sellers



My name is Callie Sellers, and I am the Summer 2021 Intern with ILEA Gaborone. My hometown is Jacksonville, Florida, USA. Currently I am a third year studying at the University of Florida in Gainesville, Florida. I am a double major studying Political Science and International Studies, with a Concentration in Europe. After my undergraduate studies are complete, I am considering pursuing law school. Some may call me crazy, but I am currently completing my exchange year at the University of Glasgow, in Glasgow, Scotland. I know, living abroad in a pandemic—challenging, crazy, but amazing!

I look forward to working with ILEA Gaborone and learning global networking and skills in coordinating international training. My goal is to gain experience working in remote environments and technology, and to gain experience in foreign service/diplomacy. My long-term occupational goal is to be in the foreign service and represent my

country, the United States, abroad. I hope that one day I will be able to travel to Gaborone, meet all of you, and experience Botswana!

A Partnership and Commitment that Continues Far Beyond the Classroom

A Joint Effort to Build a Wildlife Law Enforcement Network: a Need, a Course, and a Partnership

The U.S. Fish and Wildlife Service (Service), Office of Law Enforcement's (OLE) formal relationship with the ILEA Gaborone began in the fall of 2002 when the U.S. Department of State, Bureau of International Narcotics and Law Enforcement Affairs (INL) requested the Service provide experts to train international counterparts on wildlife trafficking. The OLE's Branch of Training and Inspection (BTI) is the unit responsible for this type of training and arranged for and deployed the first team of Service subject matter experts (SMEs) as trainers.

Before the Service's involvement, the ILEAs had been bringing U.S. law enforcement officers to instruct a variety of general law enforcement courses; however, no course was taught specifically to the needs of wildlife officers, investigators, and inspectors. Due to the success of this initial wildlife crime course, what started as a one-time class is currently taught twice a year and offered at all six ILEAs. It was also the course that solidified the ILEA-Service relationship and was the foundation for additional courses such as the Wildlife Trafficking and Model Law-Executive Policy and Development Symposium on Transnational Crime, Wildlife Border Training Inspection Program, Wildlife Trafficking Investigators Program, and Wildlife Trafficking Cybercrime Program.

The Partnership and Commitment Continues

Fighting wildlife crime and criminal networks require us to work together globally and remain nimble - we must adapt as the trade changes and be well trained to take on evolving trade trends.

Based on the needs of the field and the ever-changing landscape of wildlife trafficking, the Service, the INL, and the ILEAs continue to develop new training programs for active law enforcement officers and officials and continued opportunities for alumni.

The courses provide field rangers, inspectors, investigators, prosecutors, and others with up-to-date skills to protect wildlife; deter crime; and detect, investigate, and prosecute those who violate wildlife laws.

These courses also support executives and senior level officials who supervise or manage wildlife programs and create policy. For example, the Wildlife Trafficking and Model Law-Executive Policy and Development Symposium on Transnational Crime has been very successful. In fact, retired ILEA Roswell Director John Chavers said, "The U.S. Fish and Wildlife Service's BTI executive level curriculum and instruction exceeded everyone's expectations, as it set the stage for not only executive law enforcement cooperation regionally in Africa, Asia, and Latin America, but also led in the creation of cross-continent training efforts and stronger relationships globally, which in turn equates to greater operational success in countering transnational organized crime."

This particular course was designed to build a comprehensive national response model to combat wildlife trafficking. The curriculum focuses on leadership, ethics, and organizational change principles, through which delegates will gain essential skills in communication, critical thinking, and decision making. In addition, Service SMEs identify key areas of policy, enforcement guidance, and criminal justice and explain the system of identifying, investigating, and prosecuting crimes - the cornerstones to successful outcomes of wildlife crime.

To ensure a complete success, all delegates have the opportunity to personally meet their Service attaché who is assigned to assist their wildlife enforcement network. These Service senior special agents are wildlife law enforcement experts and stationed at U.S. embassies in physical locales that experience a high level of wildlife trafficking. The attachés and ILEA graduates build professional networks across the world to unify the fight against wildlife crime.

Meet the BTI ILEA Program Management Team

It takes remarkable leadership to create a successful training program. Steering these efforts for the Service is a leadership team that is committed to keeping the courses both relevant and timely.

It takes remarkable leadership to create a successful training program. Steering these efforts for the Service is a leadership team that is committed to keeping the courses both relevant and timely.

The BTI is led by Special Agent in Charge Bruce Kindle and BTI's ILEA Program Manager is Cindy Mercado. Together with the other BTI staff, they maintain a close working relationship with the ILEAs

management teams to ensure the course curriculums meet the needs of class participants and ensure the instructor teams are comprised of Service SMEs who have extensive expertise and knowledge of the subjects being taught.

ILEA Programs Focus on Combating Wildlife Crimes

Currently, the BTI offers four programs in cooperation with the ILEAs. The courses are tailored to the variety of positions that have a role in combating wildlife trafficking. Each course is taught by subject matter experts and designed to have approximately 40 delegates or participants. The courses highlight the techniques unique to different facets of conducting border inspections, conducting cyber and wildlife crime investigations, and developing laws and policies to improve prosecutions and deter wildlife trafficking crimes. Critical to each of these courses, and success in the field, is an emphasis on building networks to fight transnational wildlife criminals.

BTI's Current ILEA Curriculum

(In cooperation with the INL and the ILEAs), the BTI offers:

Wildlife Trafficking and Model Law-Executive Policy and Development Symposium on Transnational Crime

This two-week symposium focuses on building a comprehensive national response model for combating wildlife trafficking. This executive course hosts 40 delegates who are responsible for leading change, policy, and critical thinking in order to deter transnational organized crime syndicates and to build a law enforcement network that is needed to beat a criminal network.

Delegates gain essential skills in communication, critical thinking, and decision-making, which are vital when acting in a leadership role. The curriculum includes topics such as criminal justice, investigations, and prosecuting wildlife criminals, all of which are explained in detail.

Service SMEs identify the latest policy guidelines, enforcement guidance, and legislative developments and outline statutes that have been developed to combat wildlife crimes. The symposium also provides the delegates with instruction on how wildlife traffickers and criminal trafficking organizations commit their crimes and the techniques, tools, and strategies needed to successfully investigate and prosecute wildlife traffickers.

The symposium explores the process of an investigation and prosecution to facilitate the understanding of the structures and strategies needed to effectively combat these crimes. The goal of this symposium is to teach the delegates how to effectively, and strategically, develop a comprehensive response to the difficulties of wildlife trafficking. An open forum with WTES alumni provides the opportunity to explore the successes with local contacts, Service SMEs, and their closest Service attaché.

Wildlife Border Inspection Training Program

The one-week curriculum is taught by Service and the U.S. Customs and Border Protection law enforcement officers and provided to approximately 40 participants. It combines both classroom and practical field exercises blended in a way to provide an overview of inspection techniques, identification of trends, and how to identify illegal wildlife at the border. Training includes the implementation of the Convention on International Trade in Endangered Species of Wild Fauna and Flora (CITES), wildlife trade data, wildlife identification, case initiation and management, interview techniques, border interdiction, evidence processing, ethics, corruption, and the importance of court preparation.

Throughout the course, the delegates are shown the latest interdiction techniques used at U.S. (and the host nation's) ports of entry and a variety of smuggling methods. The instructors also encourage an active exchange of information and techniques between all participants in order to learn from each other and create effective procedures to fight wildlife trafficking. This open dialogue throughout the course provides the opportunity for host nations to gain insights on specific wildlife trafficking trends, faced by the participating countries, and are used to further secure their own borders.

In addition, the participants meet their closest Service attaché to begin a professional working relationship. The attachés and the ILEA graduates create an alliance of host nations that share knowledge, skills, and intelligence.

Wildlife Trafficking Investigators Program

This two-week course provides an overview of various wildlife trafficking investigative topics, is presented twice a year, and seats up to 40 participants per session. The curriculum focuses on endangered species law; CITES wildlife trade data; wildlife identification; case initiation and management; digital evidence; forensics and crime scene processing; surveillance; undercover operations; money laundering; interviewing; ethics and corruptions; warrant execution; report writing; and court preparation.

The course emphasizes the importance of developing and maintaining global contacts to exchange intelligence between countries because this open dialogue provides the opportunity for host nations to gain insights on specific wildlife trafficking problems that are present in the participating countries. Instructors introduce and discuss techniques and methods available to combat specific wildlife investigative issues and provide an opportunity for the participants to meet their Service attaché, exchange contact information, and begin a professional relationship built upon trust. This exchange of intelligence and cooperation on investigations is crucial in combating international wildlife trafficking.

Wildlife Trafficking Cybercrime Program

This one-week curriculum was created for investigators and computer experts and provides advanced cybercrime investigative topics related to wildlife trafficking. Forty participants are taught the latest techniques to document digital evidence; crime scene processing; online undercover operation considerations; and e-mail, social media, and online marketplace investigations.

The course provides investigatory strategies to identify, prove, or disprove wildlife crimes using cybercrime detection tools and techniques. Instructors encourage an open dialogue throughout the course so participants may gain insights on their own specific wildlife cybercrime issues and offer techniques and methods to combat those investigative challenges, ultimately so that participants may use these skills to solve cyber wildlife crimes.

Connections and Success in the Classroom Lead to Success in the Field

These courses have been taught at the ILEAs for almost 20 years and there have been several successful outcomes. In particular, is the creation of multiple international conservation law enforcement partnerships. Through these partnerships, wildlife conservation officers have become global partners who share intelligence, skills, and knowledge; therefore, improving the unified fight against wildlife crimes and wildlife trafficking.

The Service's Continued Commitment, Based on Need and a Shared Purpose

Through the BTI, the Service looks forward to our continued relationship with the ILEAs and its alumni. Protecting our wildlife resources and combating wildlife trafficking remain a critical need. As these criminal networks become more sophisticated, so must we in the conservation law enforcement community. BTI's SAC Bruce Kindle said, "ILEA Gaborone has been a valued partner for nearly 20 years, and we look forward to continuing to find ways to work together to support law enforcement officials around the world to solidify a global enforcement network that truly leads to borderless protection for wildlife worldwide."

The Importance of Staying Connected

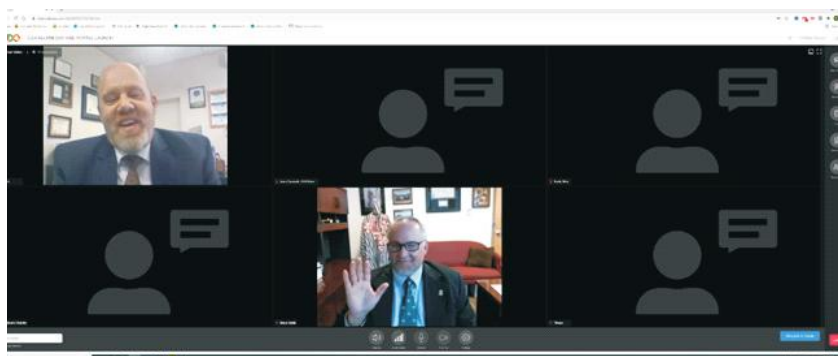
Service Attaché Contacts in Africa

Since 2014, the OLE has been building a corps of attachés to serve as conduits to share information and build expertise in various regions of the world. There are currently four attachés in Africa serving the southern, western, eastern, central, and the Horn of Africa regions. These attachés are a local point of contact to share intelligence, gain assistance, and to provide localized training. The BTI uses training programs to introduce these attachés to course participants so they know whom to contact and build a professional relationship. These relationships provide an opportunity to work together for the protection of

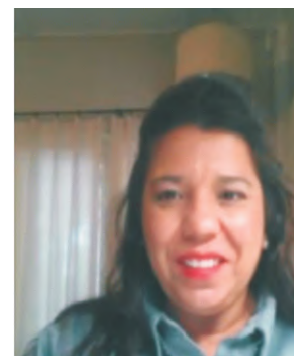
our treasured lands, wildlife, plants, and people, and together we leverage a stronger and just hand in our role to protect and facilitate legal wildlife movement across our borders. We understand the value of joining the attachés and in-country experts in their investigative and wildlife coordination needs both in Africa and around the world.



SAC Kindle



SAC Kindle taking part in the ILEA alumni portal in April 2021.



Cindy Mercado

Contact the Attaches

Southern Africa Countries

Russ Stanford

Russ_Stanford@fws.gov

+27 760988874 (WhatsApp)

East Africa Countries

Phil Alegranti

Philip_Alegranti@fws.gov

+255 677 679 898 (WhatsApp)

Horn of Africa

Keith Swindle

Keith_Swindle@fws.gov

+254 (0) 114 021 686 (WhatsApp)

West/Central Africa Countries

Craig Tabor

Craig_Tabor@fws.gov

+241 07 50 63 99 (WhatsApp)





MISSION STATEMENT

Building capacity and cooperation in and among African law enforcement officials by providing quality training and skills needed in combating transnational crime and other emerging law enforcement challenges effectively and efficiently.

VISION STATEMENT

To be the leader in law enforcement training on the continent of Africa by providing the finest law enforcement training available while maintaining up to date and relevant training capabilities as we grow.

International Law Enforcement Academy
Gaborone
“Empowering Those Who Serve”
Embassy Enclave
Gaborone, Botswana
Tel: (+267) 533 7666
Fax: (+267) 533 - 7668
email: ileagaborone1@gmail.com

<https://gaborone.ilea.state.gov/>