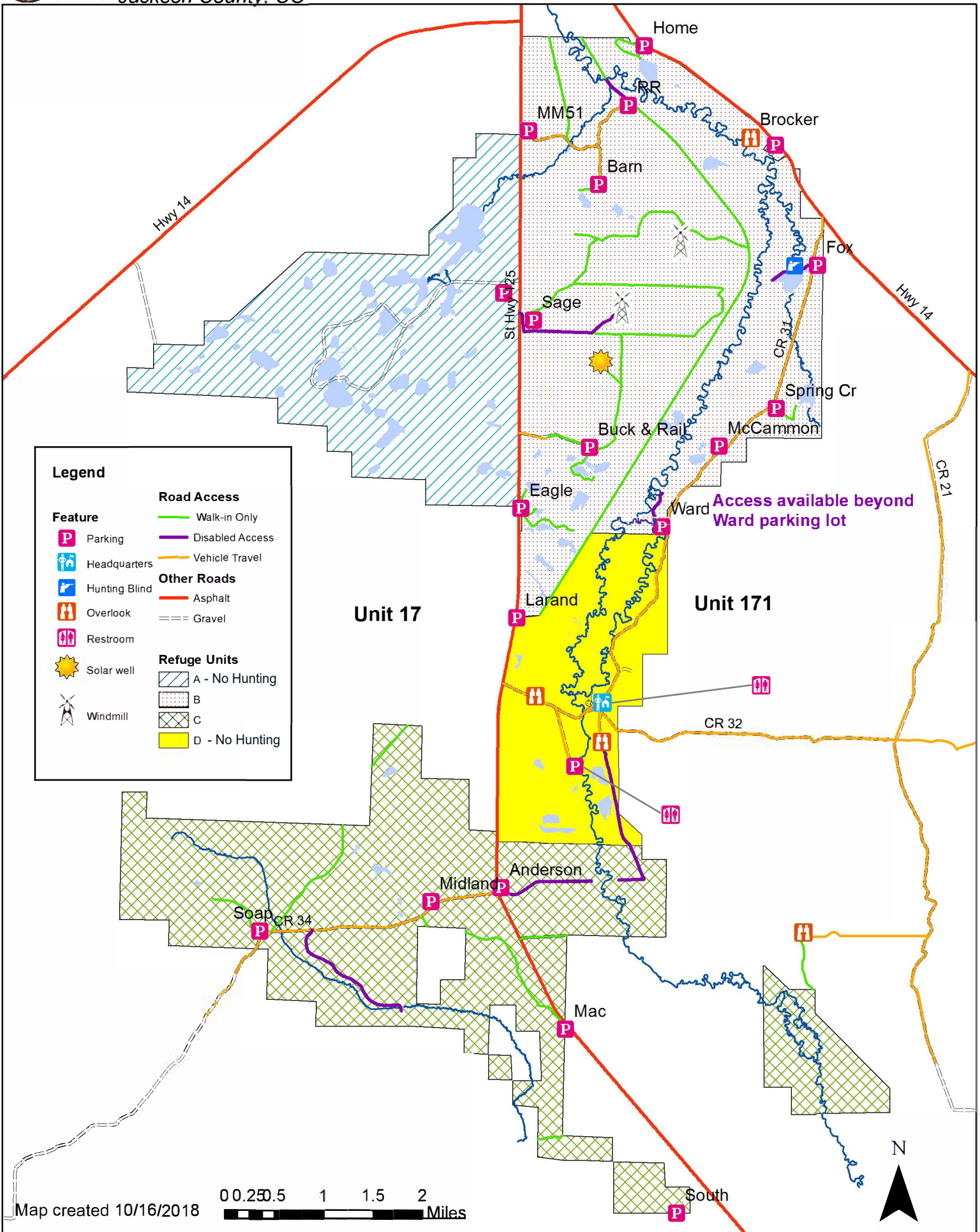




**U.S. Fish & Wildlife Service**  
**Arapaho National Wildlife Refuge - Hunting Zones**  
 Jackson County, CO

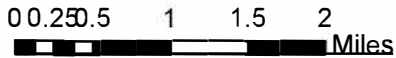


Access available beyond Ward parking lot

**Legend**

<b>Feature</b>	<b>Road Access</b>
Parking	Walk-in Only
Headquarters	Disabled Access
Hunting Blind	Vehicle Travel
Overlook	<b>Other Roads</b>
Restroom	Asphalt
Solar well	Gravel
Windmill	<b>Refuge Units</b>
	A - No Hunting
	B
	C
	D - No Hunting

Map created 10/16/2018



## Hunting Regulations

Hunting is permitted according to Federal and State regulations and the following special regulations. Hunters must possess all applicable Federal and State licenses. The Refuge is open only to the hunting activities specifically stated in this brochure. All hunting on the Refuge closes December 31 each year.

If in doubt as to any regulation, contact Refuge staff at 970 / 723 8202.

### *Hunting Hours*

Hunters can access the Refuge no earlier than 1 hour before legal shooting hours and must exit the Refuge no later than 1 hour after legal shooting hours.

### *Hunting Areas*

Hunting is permitted only in the designated hunting areas posted and shown on the map. Hunting is prohibited within 100 feet of roads and parking areas.

### *Method of Take*

Only legal shotguns, muzzleloaders, rifles, and hand-held bows meeting State regulations are permitted. Non-toxic shot must be used for all shotgun hunting on the Refuge.

### *Access*

It is illegal to use or possess lead shot while in the field.

Vehicle travel is limited to improved gravel roads. Vehicles must be parked in parking areas so access by other Refuge visitors is not hindered.

### *Camping*

Overnight camping and open fires are prohibited.

### *Retrieving*

Retrieving game from areas closed to hunting is prohibited. Regulate your shooting so that game does not fall into "Closed to Hunting" zones of the Refuge.

### *Blinds and Boats*

Using a portable blind or natural vegetation as a blind is permitted. However, cutting or manipulating natural vegetation for a blind is prohibited. Blinds and decoy setups must be removed daily and are not permitted prior to the opening of the waterfowl season.

### *Littering*

Littering is prohibited. Pack your trash (including shotgun shell casings and fishing line) out with you so that the area will remain clean, natural, and enjoyable.

	Unit A and D	Unit B	Unit C	
<i>Hunting Seasons</i>	<b>Small Game</b>			
	Sage Grouse	Closed	State Season	State Season
	Cottontail, Jackrabbit	Closed	State Season <sup>1</sup>	State Season <sup>1</sup>
	<b>Migratory Birds</b>			
	Duck, Coot, Merganser	Closed	State Season <sup>1</sup>	Closed
	Canada Goose	Closed	State Season <sup>1</sup>	Closed
	Snipe, Rail	Closed	State Season <sup>1</sup>	Closed
	Dove	Closed	State Season <sup>1</sup>	Closed
	<b>Big Game</b>			
	Pronghorn	Closed	State Season	State Season
Deer, Moose	Closed	Closed	Closed	
Elk	Closed	Limited Draw	Limited Draw	

<sup>1</sup> All hunting is in accordance with State seasons established for this area except that the Refuge is closed to rabbit hunting on December 31st annually.