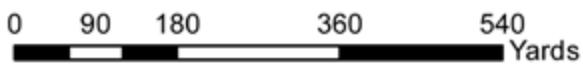
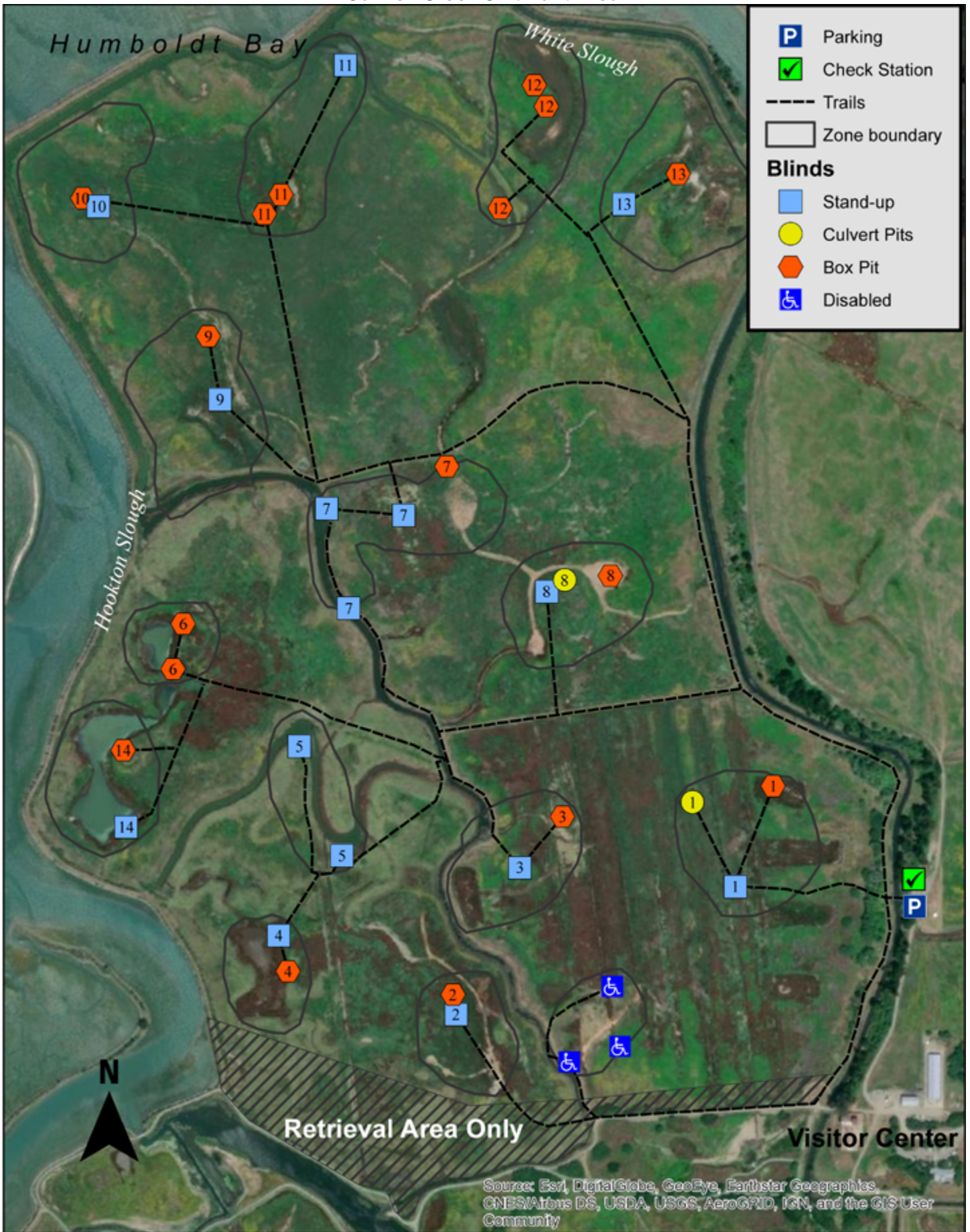


Humboldt Bay National Wildlife Refuge

Salmon Creek Unit Hunt Area



Salmon Creek Unit Hunt Area Blinds

Blind #	Stand-up Blinds	Box Pit Blinds	Culvert Pit Blinds	Blind Zone Regulations
D	2	1	0	Hunt from stand-up blind on the north edge of D or from the slough next to D blind trail. New box pit along South edge of area. Do not cross road into "Area Closed" Zone for any reason.
1	1	1	1	Hunt from either blind or cattails within blind zone. Do not hunt any closer to D or 3.
2	1	1	0	Hunt from the stand-up blind, pit blind, or cover within your zone. Do not hunt closer to D or 3; do not hunt in Retrieval Area.
3	1	1	0	Hunt from slough south of the bridge, from stand-up or pits. Do not hunt closer to D or 1.
4	1	1	0	Hunt pond from stand-up or pits. Do not hunt from levee; dogs may retrieve from Hookton Slough.
5	2	0	0	Hunt from either of two stand-up blinds along slough. Do not hunt any closer to 4 or 3.
6	0	2	0	Hunt from box pits or cover in your zone. Do not hunt from levee or closer to 14; dogs may retrieve from Hookton Slough
7	3	0	0	Hunt from both stand-ups on the pond in your zone or new box pit along north access road. Do not hunt any closer to blind 8 or north across access from pit.
8	1	1	1	Hunt from stand-up, pits, or pond in your zone. Do not hunt closer to blind 7.
9	1	1	0	Hunt from stand-up, pit or slough in your zone. Do not hunt from levee; dogs may retrieve from Hookton Slough.
10	1	1	0	Hunt from stand-up, box pit or slough in your zone. Do not hunt from levee or closer to blind 11.
11	1	2	0	Hunt from either stand-up blind or pits. Do not hunt from levee; dogs may retrieve from Hookton Slough.
12	0	3	0	Hunt from pits. Do not hunt from levee or closer to 12; dogs may retrieve from Hookton Slough.
13	1	1	0	Hunt from stand-up blind, box pit, or cattails in your zone. Do not hunt from levee or closer to blind 12.
14	1	1	0	Hunt from stand or box pit in your zone. Do not hunt from levee or closer to 6; dogs may retrieve from Hookton Slough.

NOTES:

- * No more than four hunters per blind zone at any time.
- * Stand-up blinds can accommodate 2-3 hunters each.
- * Box pit blinds can accommodate two hunters each.
- * Culvert pits can accommodate one hunter each.