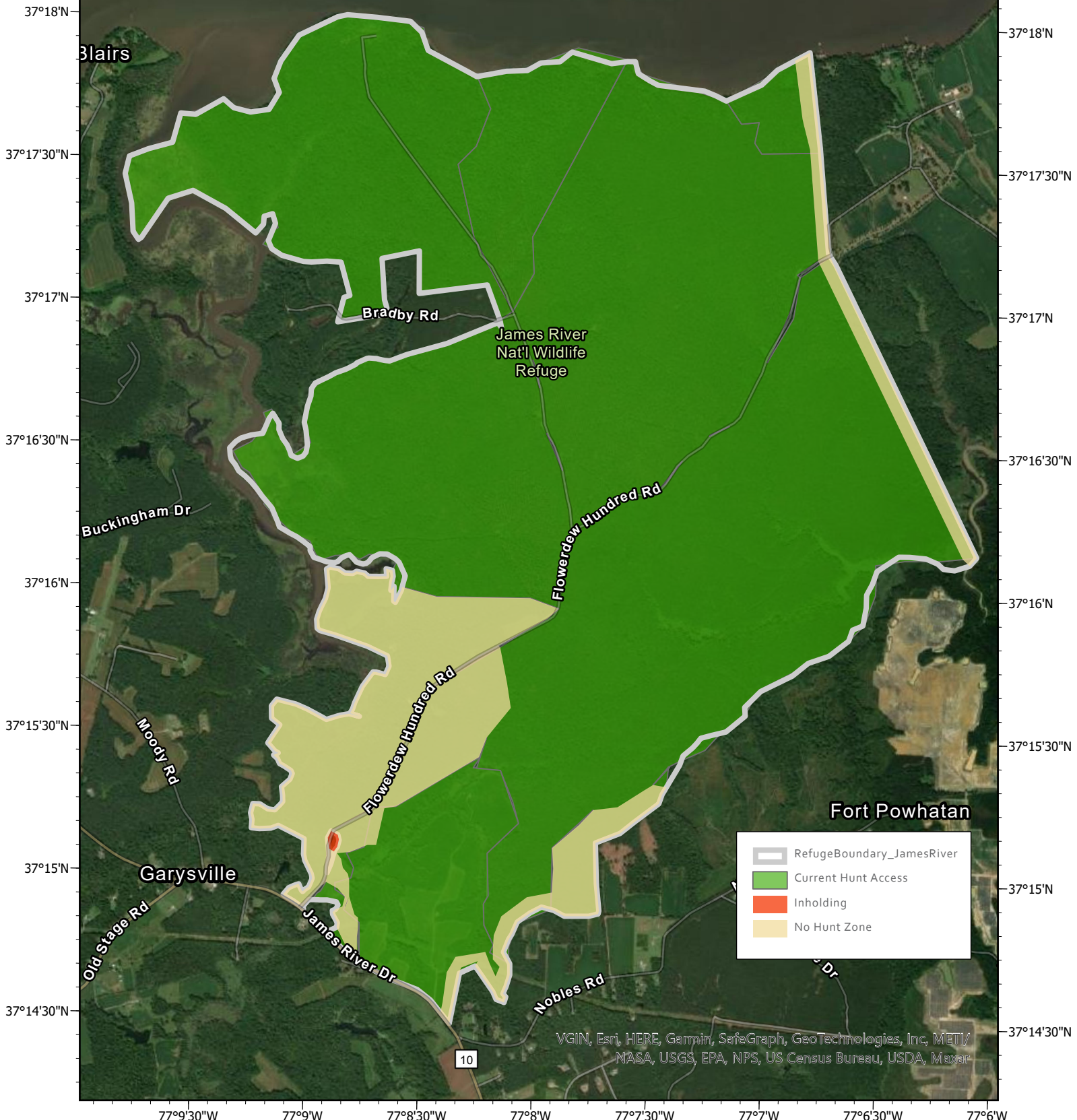




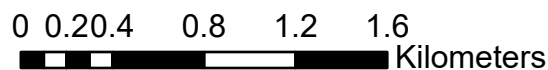
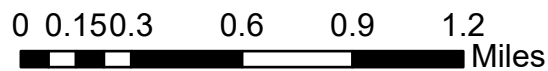
77°10'W 77°9'30"W 77°9'W 77°8'30"W 77°8'W 77°7'30"W 77°7'W 77°6'30"W



	RefugeBoundary_JamesRiver
	Current Hunt Access
	Inhoding
	No Hunt Zone

VGIN, Esri, HERE, Garmin, SafeGraph, GeoTechnologies, Inc, METI/ NASA, USGS, EPA, NPS, US Census Bureau, USDA, Maxar

Produced Eastern Virginia Rivers NWR, Warsaw, VA
Produced: December 20 2020
Basemap: ESRI Digital Globe



The USFWS makes no warranty for use of this map and cannot be held liable for actions or decisions based on map content. This map template is intended as a general guide for the creation of U.S. Fish and Wildlife maps at a small scale. This section of the Map Bibliography should be used to describe the purpose of the map, the data used to create it, and any special procedures used to process the data. ESRI base maps used must be acknowledged: Map image is the intellectual property of Esri and is used herein under license. Copyright © 2014 Esri and its licensors. All rights reserved.



Datum: NAD 83