

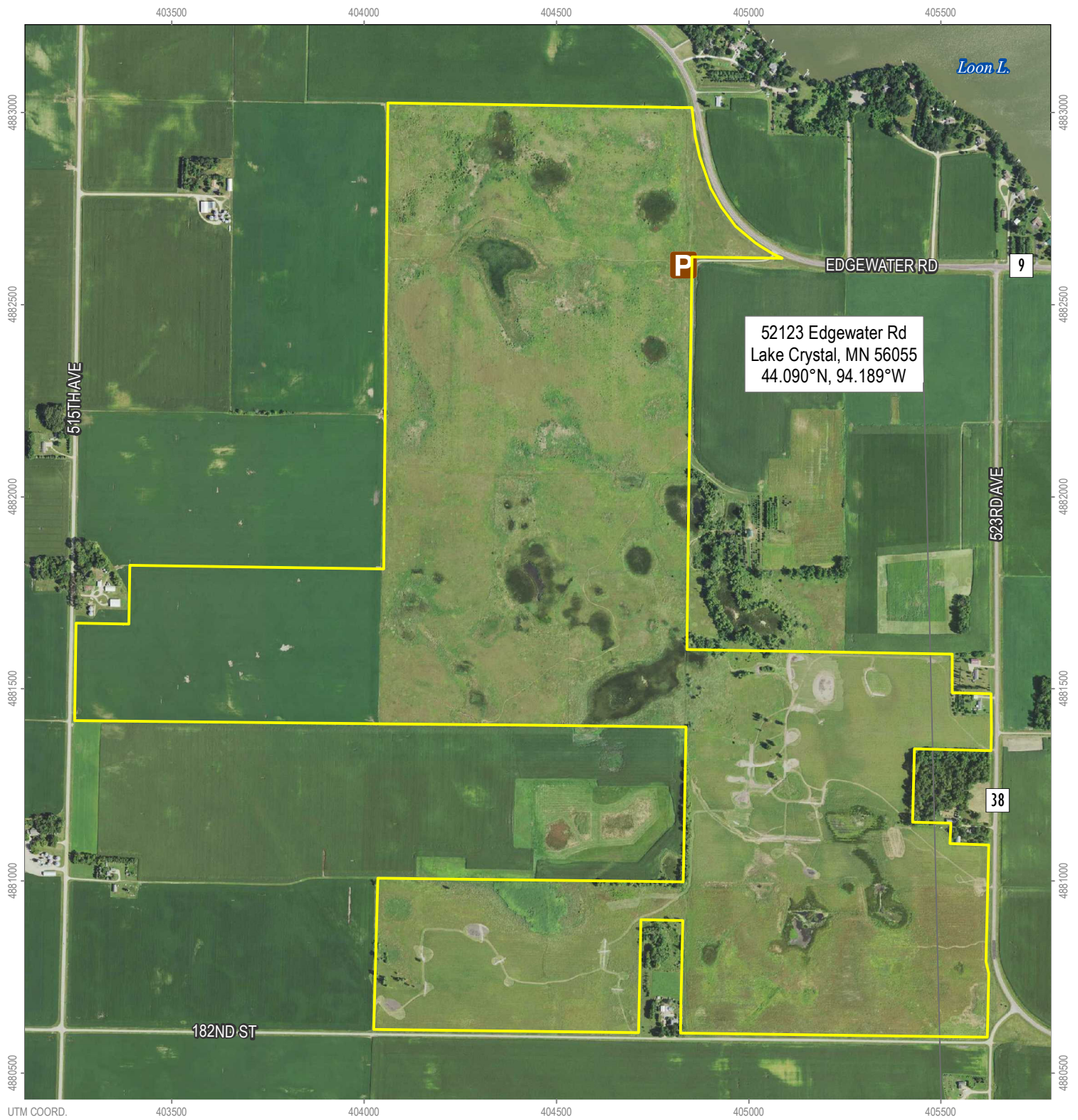


U.S. Fish & Wildlife Service

# Minnesota Valley National Wildlife Refuge

Wetland Management District

*Howard Farm WPA*



- WPA Boundary
- P Parking Lot
- 4 County Road

## Howard Farm WPA (648.4 acres)

Garden City Township, Blue Earth County  
Twp. 107N; Rng. 28W; Secs. 9, 10, 15 & 16



MATT MILLETT • AUG. 2018 • UTM ZONE 15N (NAD83)  
SOURCES: MNWR, MNDOT, USDA, BLUE EARTH COUNTY

Boundaries shown are approximate. Please adhere to all posted signs.

