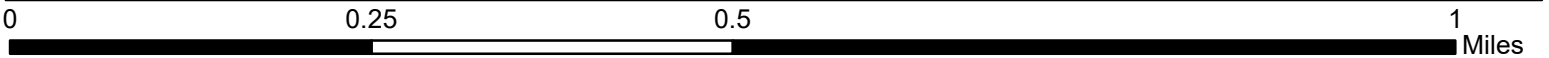
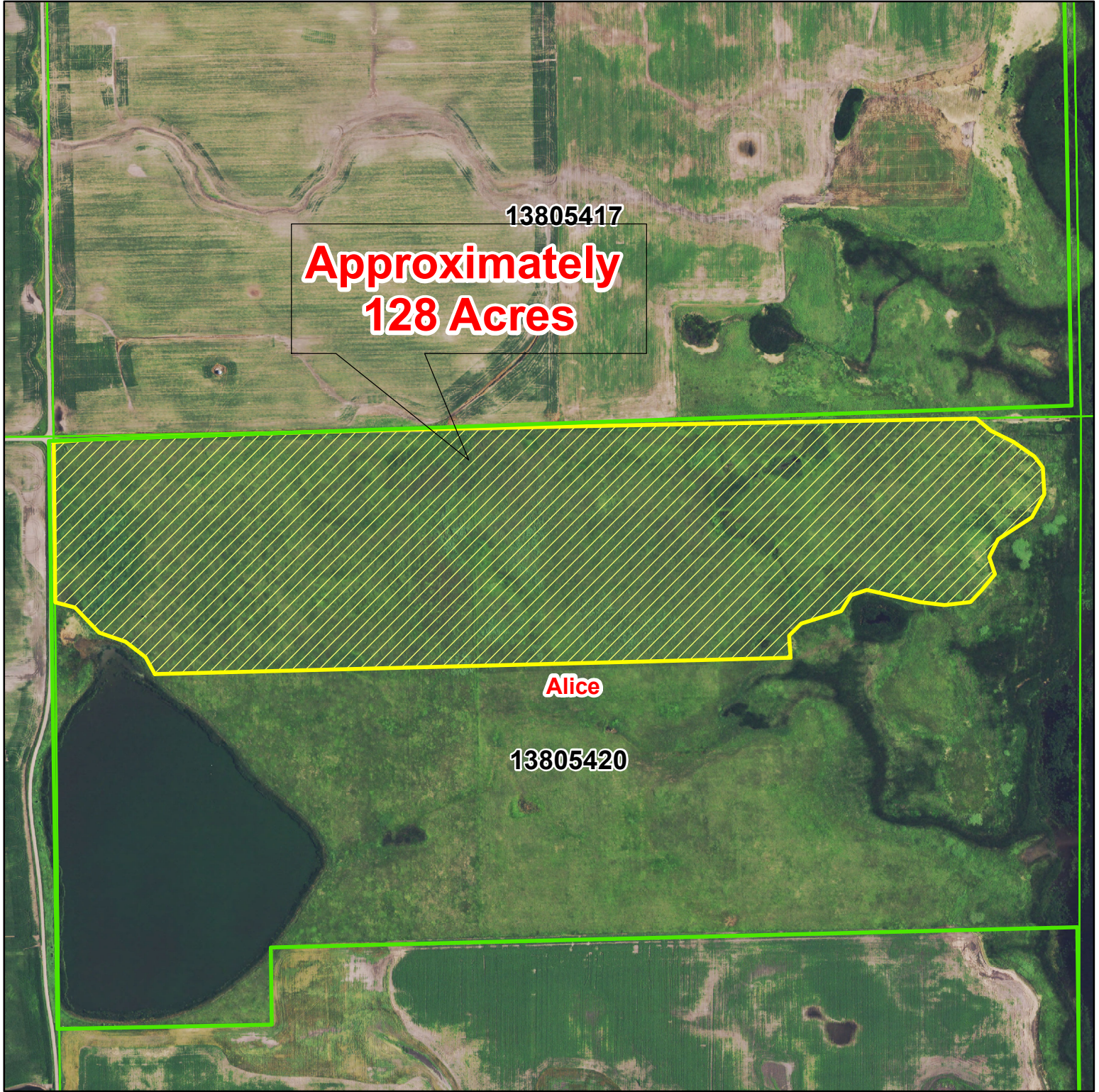




U.S. FISH AND WILDLIFE SERVICE

Alice WPA- Sec 20

Hay Unit



T138. R54. Sec 20

Legend

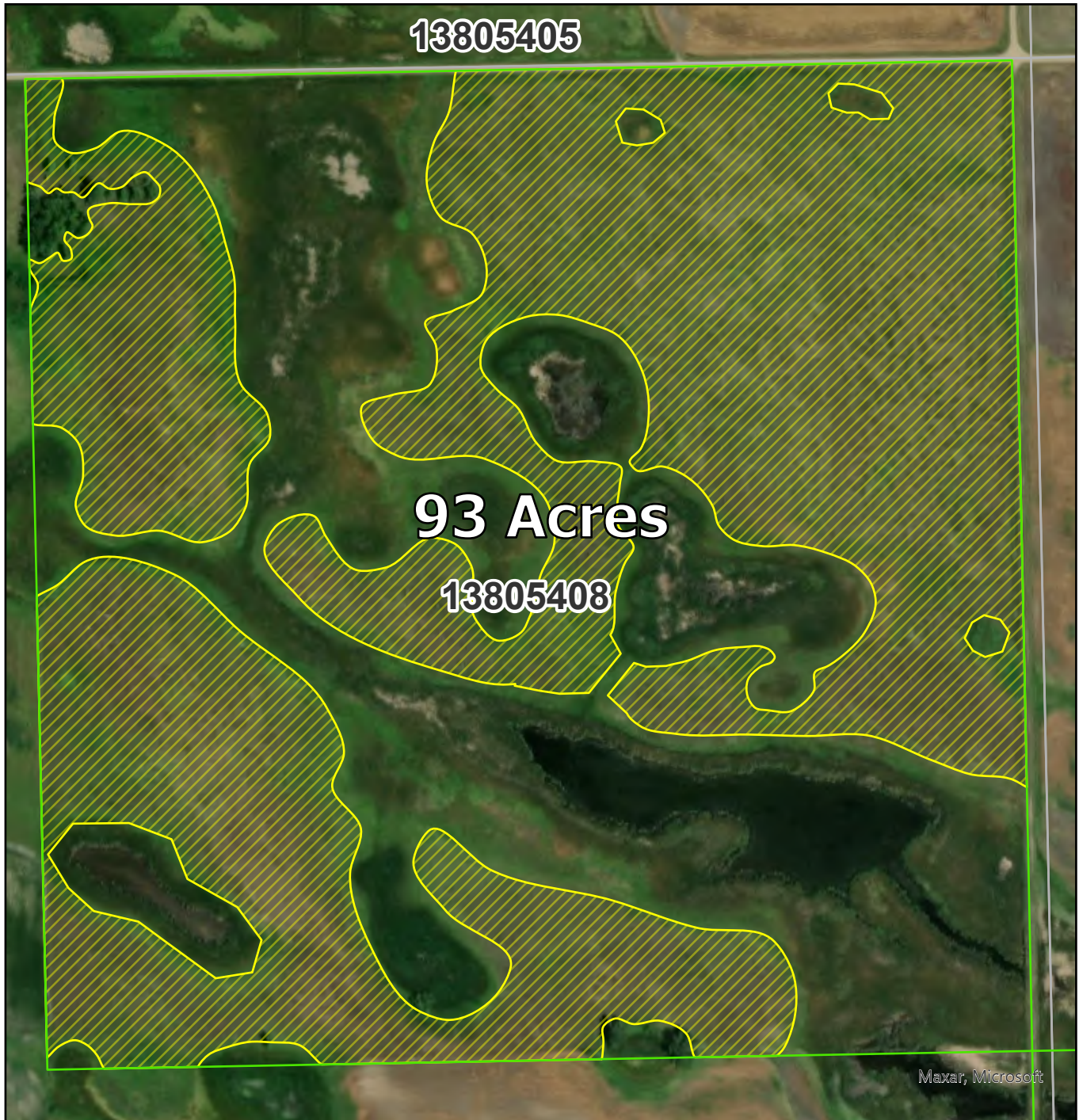
 2023 Hay Unit

The USFWS makes no claim as to the accuracy or completeness of the displayed information. Outlined areas depicting USFWS lands are for illustrative purposes only and do not represent legal boundaries. The map scale bar is specific to the actual size of the displayed area and will vary within the county. For more detailed information, please contact your local Realty office.



This map was produced by the Valley City WMD, 2023.

2019 SID

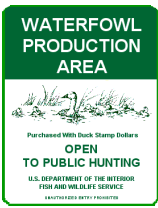


Legend

- WPA Boundary
- Hay Unit
- County Boundary
- Sections

Haying Acres: 93

The USFWS makes no claim as to the accuracy or completeness of the displayed information. Outlined areas depicting USFWS lands are for illustrative purposes only and do not represent legal boundaries. The map scale bar is specific to the actual size of the displayed area and will vary within the county. For more detailed information, please contact your local Realty office.



U.S. FISH AND WILDLIFE SERVICE


Utke WPA-Cass County

Hay Unit



T137. R55. Sec 12

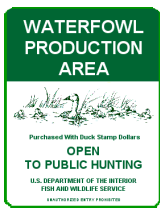
Legend

 2023 Hay Unit

The USFWS makes no claim as to the accuracy or completeness of the displayed information. Outlined areas depicting USFWS lands are for illustrative purposes only and do not represent legal boundaries. The map scale bar is specific to the actual size of the displayed area and will vary within the county. For more detailed information, please contact your local Realty office.



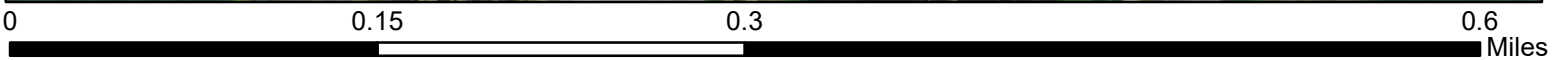
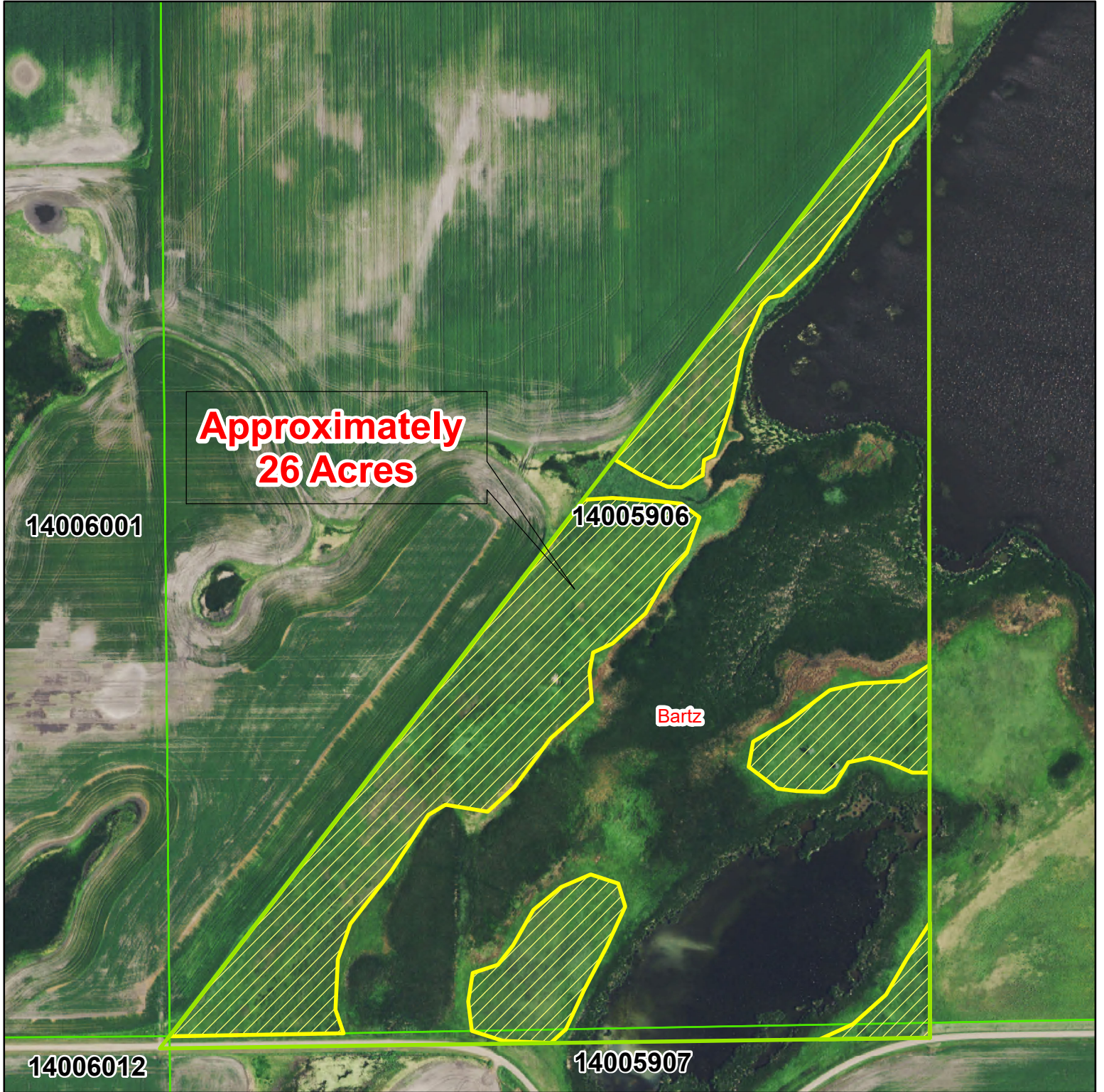
2019 SID



U.S. FISH AND WILDLIFE SERVICE

Bartz WPA- Barnes County

Hay Unit



T140. R59. Sec 6

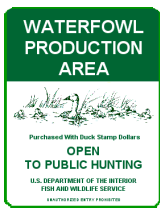
Legend

 2023 Hay Unit

The USFWS makes no claim as to the accuracy or completeness of the displayed information. Outlined areas depicting USFWS lands are for illustrative purposes only and do not represent legal boundaries. The map scale bar is specific to the actual size of the displayed area and will vary within the county. For more detailed information, please contact your local Realty office.



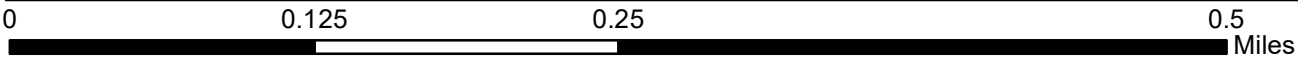
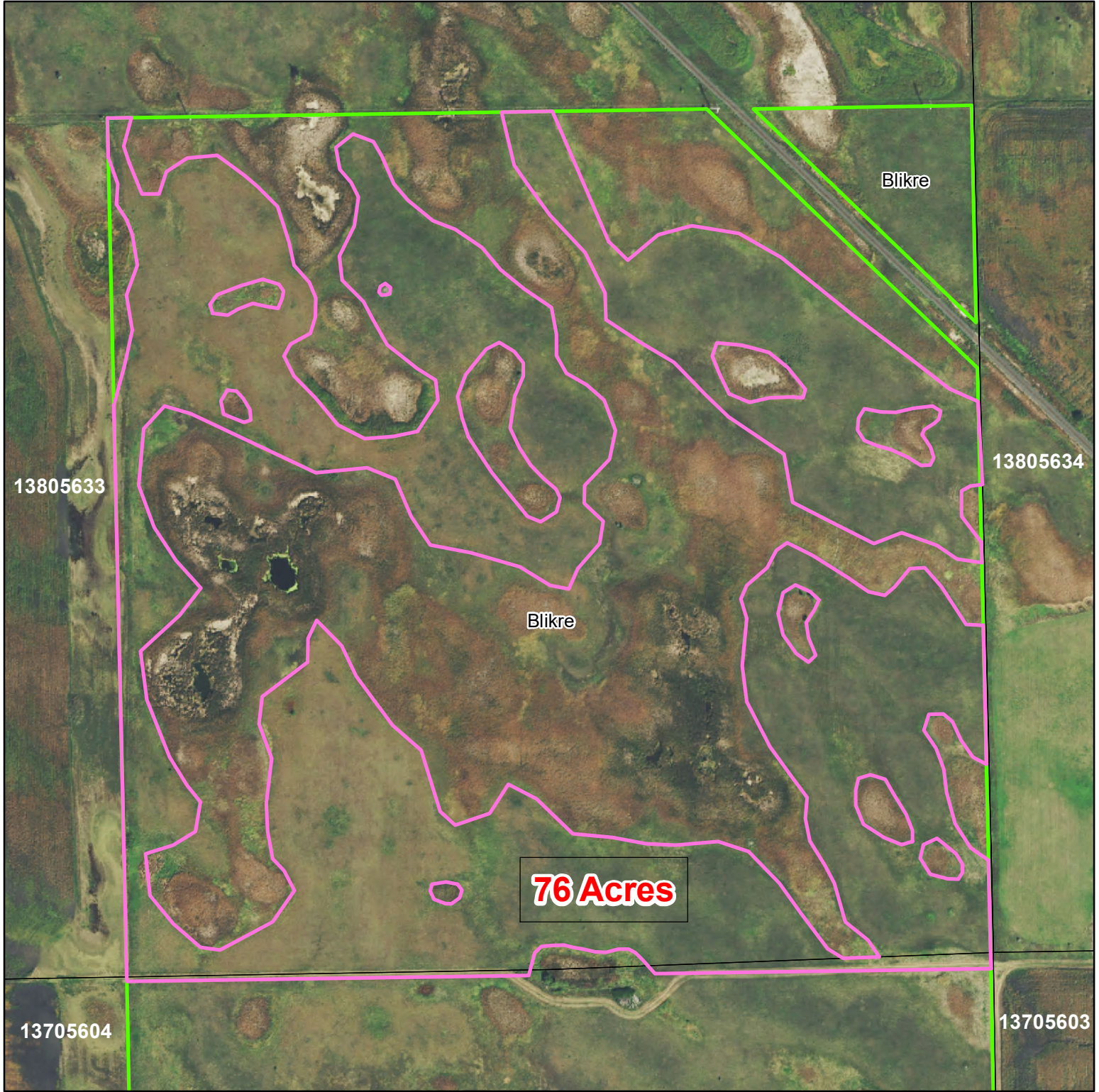
2019 SID



U.S. FISH AND WILDLIFE SERVICE


Bilkre WPA- Barnes County

Haying



T138N. R56W. Sec 33

Legend

 2023 Hay Units

The USFWS makes no claim as to the accuracy or completeness of the displayed information. Outlined areas depicting USFWS lands are for illustrative purposes only and do not represent legal boundaries. The map scale bar is specific to the actual size of the displayed area and will vary within the county. For more detailed information, please contact your local Realty office.



This map was produced by the Valley City WMD, 2023

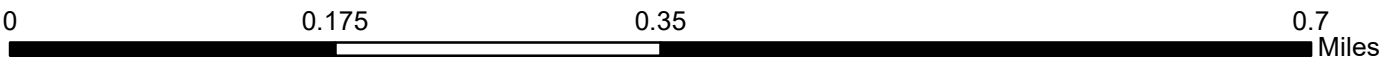
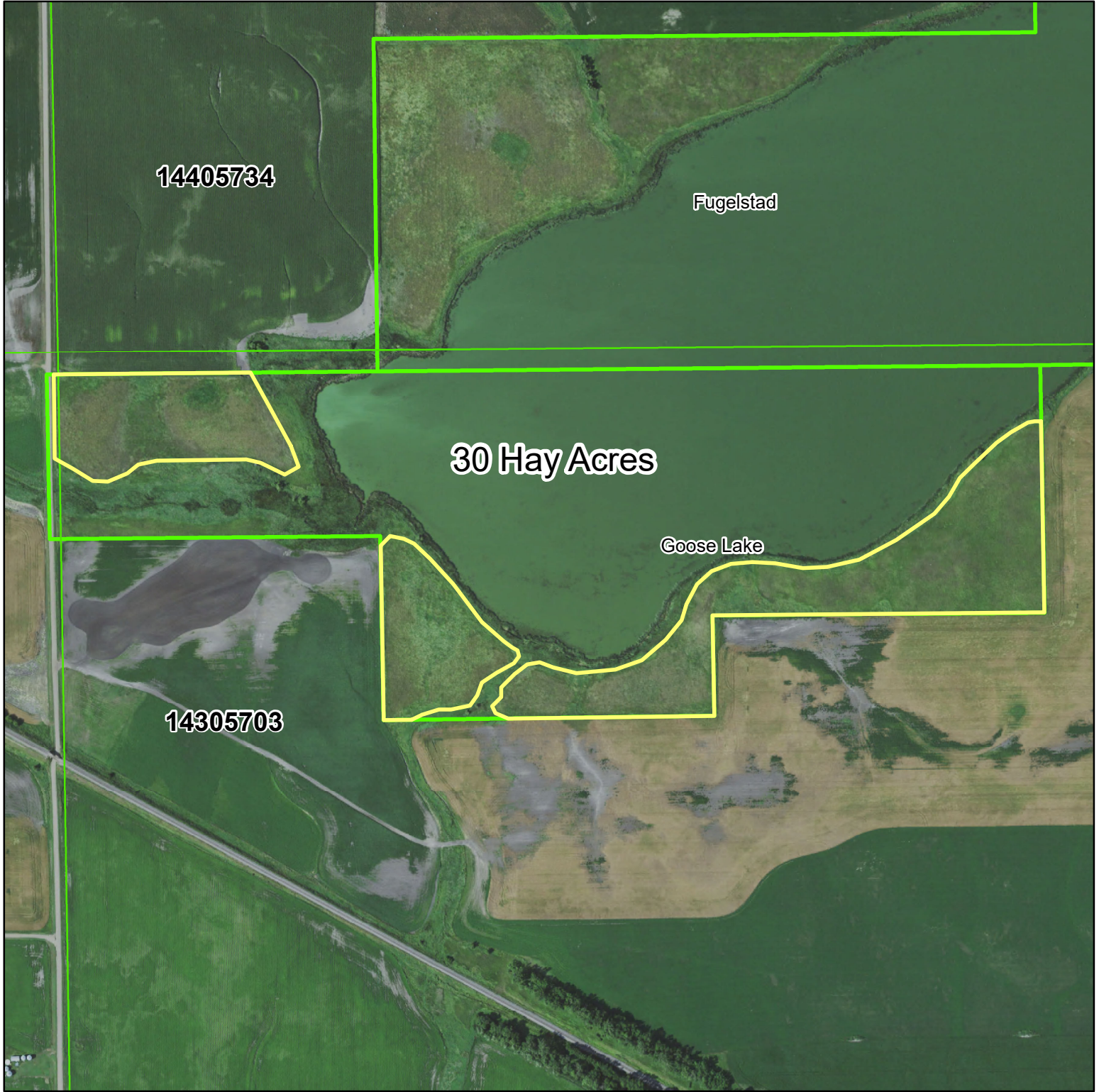
2021 SID



U.S. FISH AND WILDLIFE SERVICE

Goose Lake WPA- Barnes County

Hay Unit

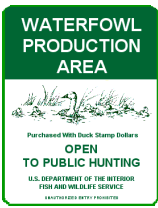


T143. R57. Sec 3 Bid Acres= 30

Legend

- 2023 Hay Unit v
- WPA Boundary

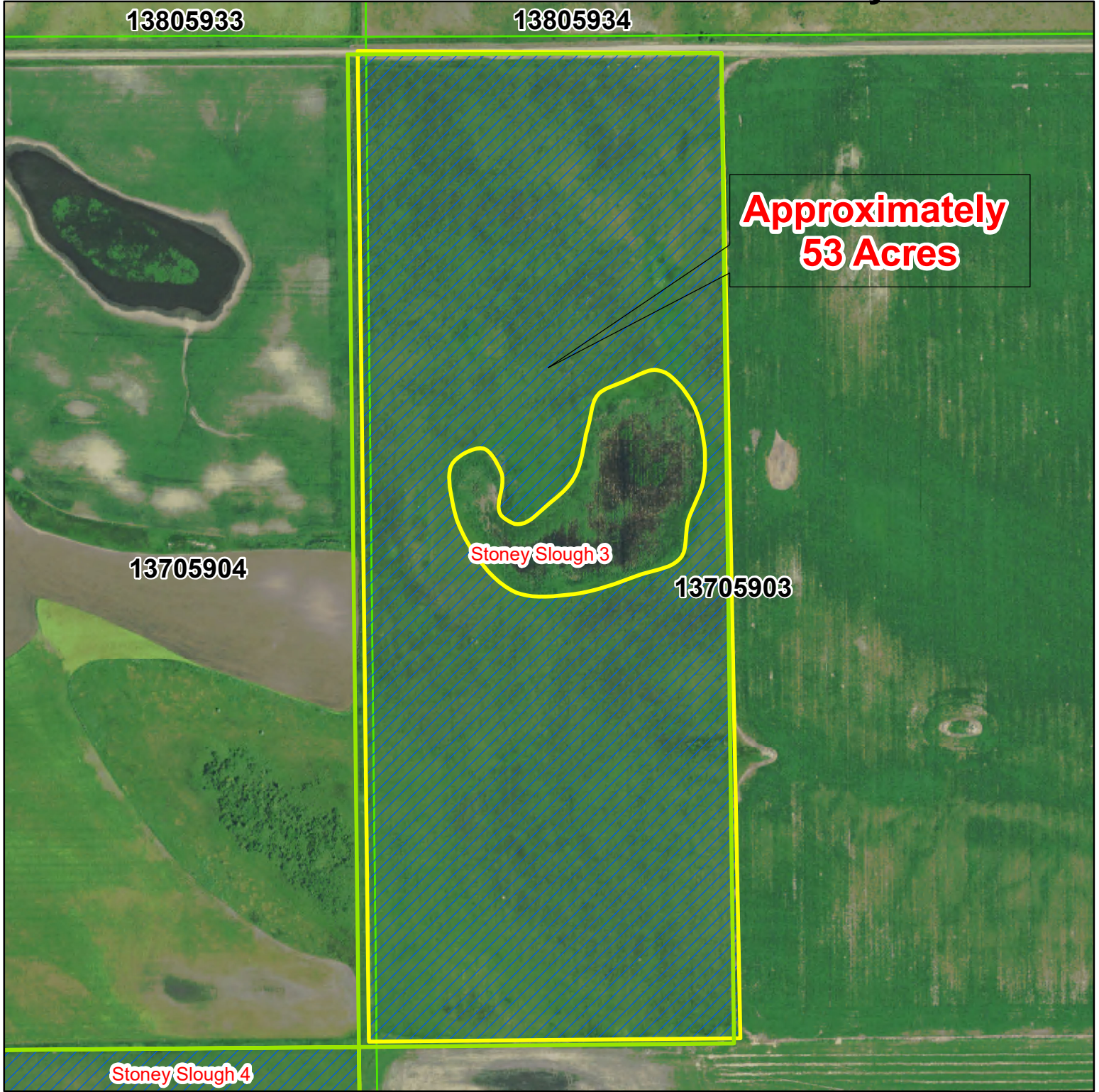
The USFWS makes no claim as to the accuracy or completeness of the displayed information. Outlined areas depicting USFWS lands are for illustrative purposes only and do not represent legal boundaries. The map scale bar is specific to the actual size of the displayed area and will vary within the county. For more detailed information, please contact your local Realty office.



U.S. FISH AND WILDLIFE SERVICE

Stoney Slough (Section 3) Barnes Co.

Hay Units 2023



T137. R59. Sec 3

Legend

2023 Hay Unit

The USFWS makes no claim as to the accuracy or completeness of the displayed information. Outlined areas depicting USFWS lands are for illustrative purposes only and do not represent legal boundaries. The map scale bar is specific to the actual size of the displayed area and will vary within the county. For more detailed information, please contact your local Realty office.



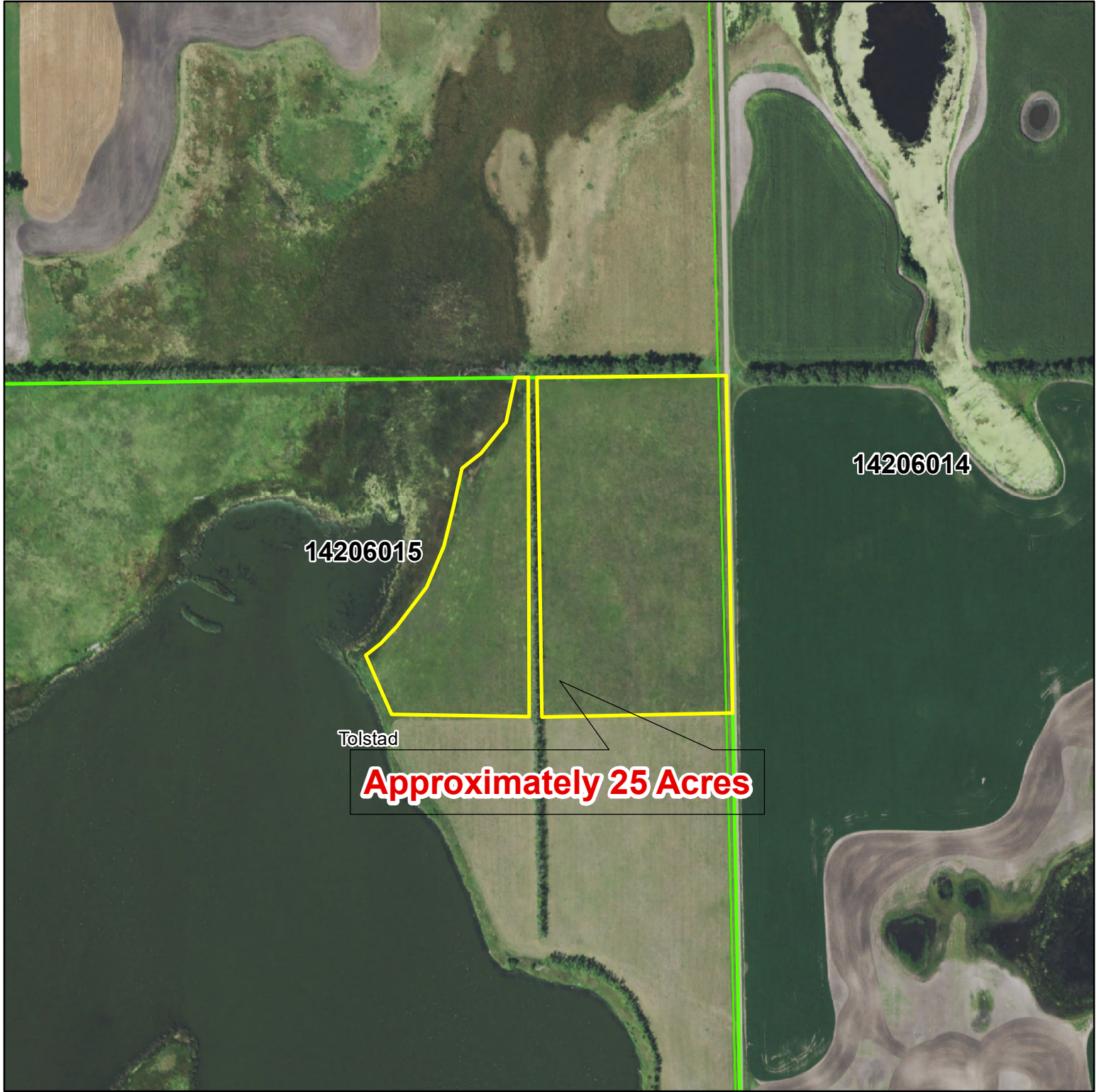
2019 SID



U.S. FISH AND WILDLIFE SERVICE

Tolstad WPA- Barnes County

Hay Unit



0 0.15 0.3 0.6 Miles

T142N. R60W. Sec 15

Legend

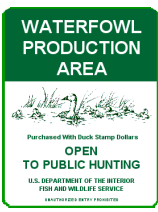
 Tolstad Hay Unit

The USFWS makes no claim as to the accuracy or completeness of the displayed information. Outlined areas depicting USFWS lands are for illustrative purposes only and do not represent legal boundaries. The map scale bar is specific to the actual size of the displayed area and will vary within the county. For more detailed information, please contact your local Realty office.



This map was produced by the Valley City WMD, 2023.

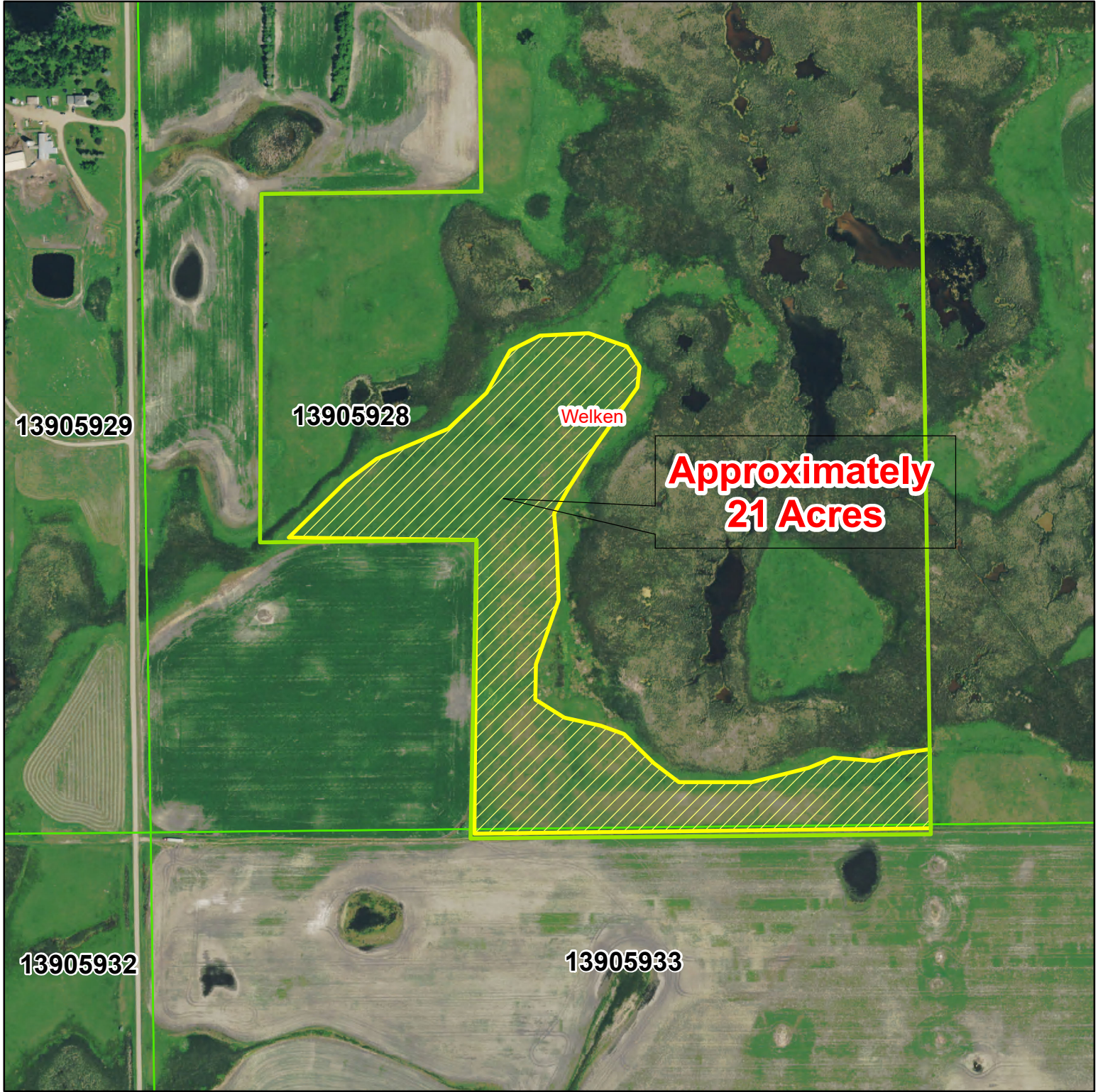
2020 SID



U.S. FISH AND WILDLIFE SERVICE

Welken WPA- Barnes County

Hay Unit



T139. R59. Sec 28

Legend

 2023 Hay Unit

The USFWS makes no claim as to the accuracy or completeness of the displayed information. Outlined areas depicting USFWS lands are for illustrative purposes only and do not represent legal boundaries. The map scale bar is specific to the actual size of the displayed area and will vary within the county. For more detailed information, please contact your local Realty office.

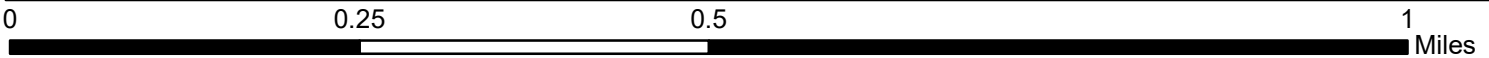
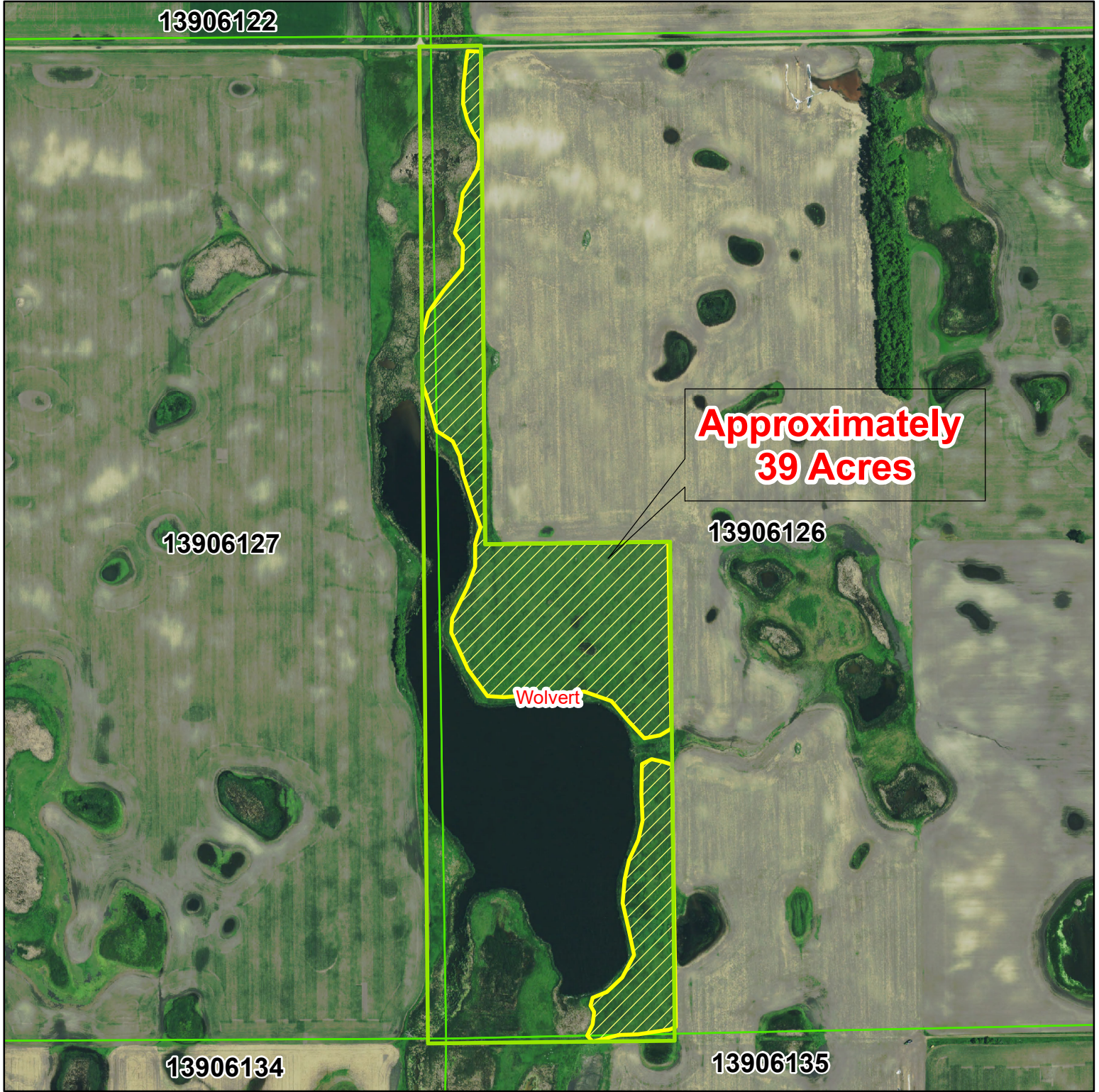




U.S. FISH AND WILDLIFE SERVICE

Wolvert WPA- Barnes County

Hay Unit



T139. R61. Sec 26

Legend

2023 Hay Unit

The USFWS makes no claim as to the accuracy or completeness of the displayed information. Outlined areas depicting USFWS lands are for illustrative purposes only and do not represent legal boundaries. The map scale bar is specific to the actual size of the displayed area and will vary within the county. For more detailed information, please contact your local Realty office.



2019 SID