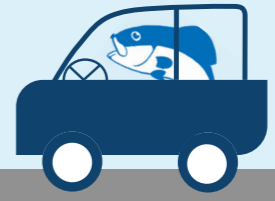




# The Great American Hatchery Road Trip!

↙ Southeast Edition



WELCOME TO Tennessee

There's nothing like cruising down the interstate, a fresh summer breeze blowing through the windows, the stereo blasting, and the anticipation of adventures ahead! The hardest part? Picking a destination! Don't worry, we've got you covered.

The National Fish Hatchery System has been improving recreational fishing and restoring aquatic species since 1872, so what better way to explore these cool sites than by starting with ones over 100 years old! Fish hatcheries have something for everyone in your group, so buckle those seatbelts and let's hit the road!

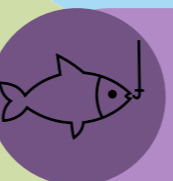


Erwin National Fish Hatchery

Erwin National Fish Hatchery was established in 1894 in the heart of the Appalachian Mountains. This hatchery is one of the Service's primary broodstock facilities and produces 16 MILLION trout eggs annually for federal, state, and tribal use and for universities and research centers!



One of the official state songs of Tennessee, it's only appropriate to blast the Osborn Brothers' version of the famous bluegrass hit "Rocky Top." Even better if you bring a banjo and sing along!



Catching fish may be your favorite activity but feeding them is pretty fun too! Get up close and personal and see if you can ID different species in the display pond. Bonus points if you can work in a story about that one time you caught a monster trout!



Check out the hatchery's nature trail, complete with tree identification tags along the path and plenty of wildlife to view along the way. Pro tip: don't tell your friends or family about the tree ID tags and look like a genius!



Erwin isn't just for fish! Did you know they also have an apiary on site?! Head over to their pollinator gardens and BEE sure to see these little champs in action.



Did you know that in the 1800s fish were transported across the country by rail? While at Erwin, make sure you visit the Unicoi County Heritage and Clinchfield Railroad Museums that are on site and learn more about that fascinating past!



The birding opportunities are abundant at Erwin. What does this have to do with art? We're glad you asked! Take this opportunity to bust out that telephoto lens and snag some amazing shots.



## MAP LEGEND

- The Angler
- The Explorer
- The Animal Lover
- The Historian
- The Artist



Time to give a shout out to one of our sibling agencies - the Great Smoky Mountains National Park is a little over an hour away from Erwin! The best part is, you'll be an expert at identifying local trees from the Erwin trails, so you'll look like a total pro on theirs!



Before you hit the road, be sure to check the hatchery's web page for additional activities and call ahead to check opening status.

Next Exit: → More Hatchery Fun!

## OTHER HATCHERIES IN THE SOUTHEAST SERIES

- Mammoth Spring National Fish Hatchery - Arkansas
- Orangeburg National Fish Hatchery - South Carolina
- Warm Springs National Fish Hatchery - Georgia
- White Sulphur Springs National Fish Hatchery - West Virginia