



U.S. Fish & Wildlife Service

Great Thicket - Al Harvey Road Parcel

National Wildlife Refuge Hunting Regulations

Welcome

Great Thicket National Wildlife Refuge is a unique refuge dedicated to conserving and managing shrubland and young forests in New England and eastern New York. The refuge was established in 2016 to conserve at-risk species that rely on young forests and early successional habitats. Many state agencies as well as non-government partners have come together to establish and expand the refuge.

The Pachaug-Ledyard focus area, in southeastern Connecticut, is an area of about 38,000 acres in four towns where the Service can acquire land for the refuge from willing sellers. To date, nearly 200 acres have been acquired in Stonington and North Stonington.

Great Thicket National Wildlife Refuge

c/o

Stewart B. McKinney National Wildlife Refuge 733
Old Clinton Road, Westbrook, CT 06498

860-399-2513

860-399-2515 (Fax)

https://www.fws.gov/refuge/Stewart_B_McKinney/

For state relay service TTY/ Voice: 711

U.S. Fish & Wildlife Service

1-800-344-WILD

August 2022

I have read and agree to comply with the refuge rules and regulations described in this hunt brochure. Permit valid for current season only.

Signature _____ Date _____

You must carry this signed and dated permit with you at all times while hunting on the refuge.

This is a unit of the National Wildlife Refuge System, a network of lands and waters managed for the benefit of wildlife and people.



Hunting Information

Hunting on the Al Harvey Road parcel is **archery-only**. Hunting is allowed during the September-December season for big game, upland game (except for rabbit and hare) and migratory birds. Season dates and bag limits are fully consistent with state regulations.

Safety

Hunters are expected to maintain the highest level of hunt safety at all times. Hunters must be aware that other non-hunting visitors are present on the refuge. Hunters must respect no hunting safety zones and buffers. The transition from the hunt zone to the portion of the refuge closed to hunting is marked by signage and light blue circular blazes along the trees.

Firearms

This hunt is **archery-only**. Persons possessing, transporting, or carrying firearms on National Wildlife Refuge System lands must comply with all provisions of state and local law. Persons may only use (discharge) firearms in accordance with refuge regulations (50 CFR 27.42 and specific refuge regulations in 50 CFR Part 32.).

Vehicles

ATVs, UTVs and motor vehicles are prohibited on the refuge. There is a public access point along Al Harvey Road. See map on reverse.

Accessibility Information

Equal opportunity to participate in and benefit from programs and activities of the U.S. Fish and Wildlife Service is available to all individuals regardless of physical or mental ability. For more information please contact the U.S. Department of the Interior, Office of Equal Opportunity, <https://www.doi.gov/pmb/eeo/public-civil-rights>.

Hunting Regulations

Hunting regulations are designed to provide safe recreational opportunities through wise use of renewable wildlife resources. Hunting is permitted in accordance with Federal regulations governing public use on National Wildlife Refuges as set forth in Title 50 of the Code of Federal Regulations. Hunting will be in accordance with applicable State of Connecticut regulations, subject to the conditions stated below.

Access

The refuge may be accessed by hunters 1 hour before legal sunrise to 1 hour after legal sunset, to set up and break down. Access is via foot trail. Hunters must be aware that the no hunting zone is marked by signage and light blue circular blazes along the trees.

Dogs

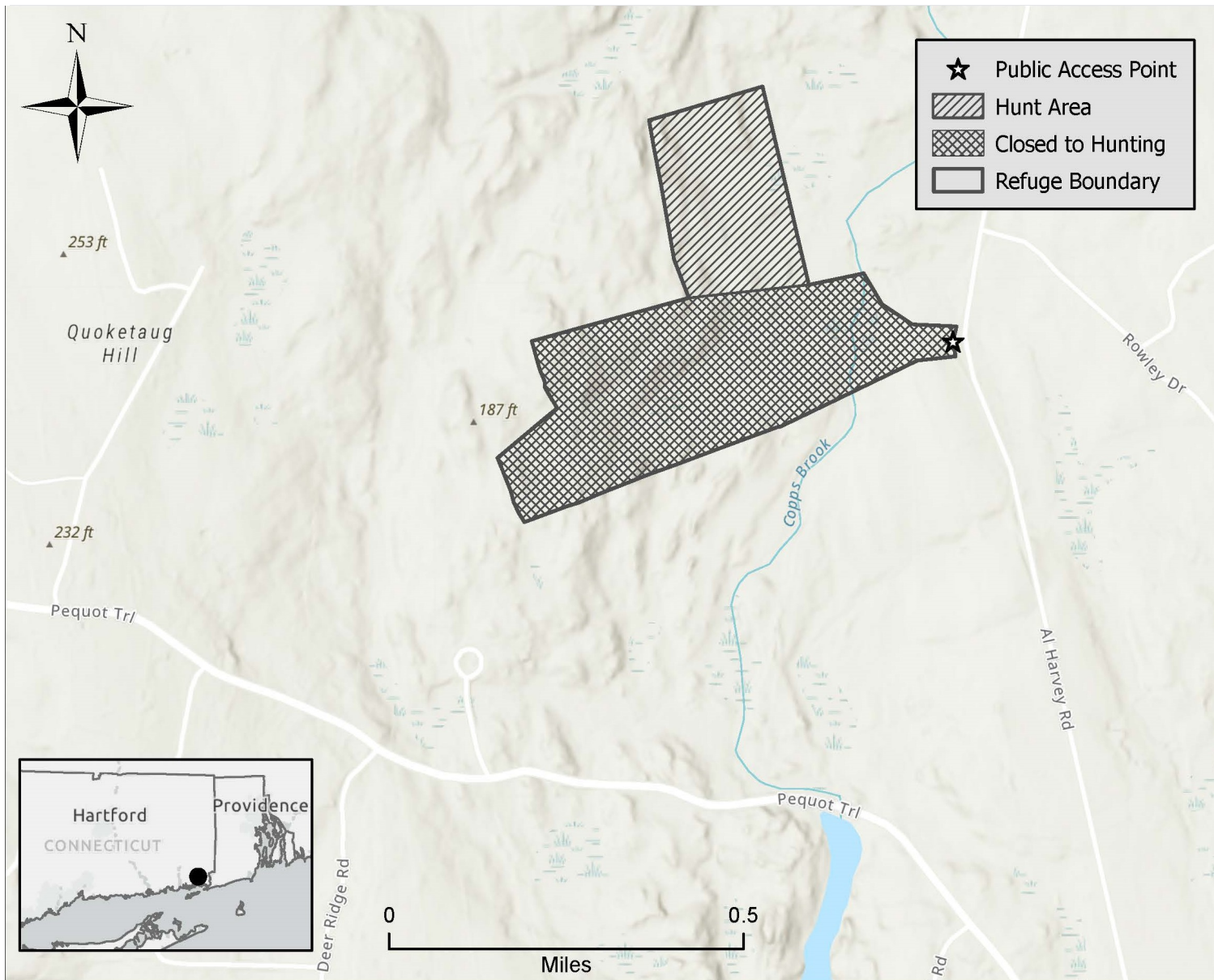
The use of hunting dogs is allowed, consistent with state regulations.

Tree Stands

Tree stands, blinds and other other hunting equipment must be removed from the refuge at the end of each day.

Harvest Reporting

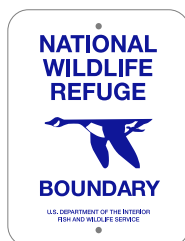
Successful hunters are requested to return a Big Game Harvest Report (FWS 3-2359) and/or a Migratory Bird Hunt Report (FWS 3-2361) to the refuge at the end of the hunting season. These may be emailed to the Visitor Services Manager at shaun_roche@fws.gov, faxed to 860-399-2515 or sent by postal mail to refuge headquarters, Stewart B. McKinney NWR.



Prohibited Activities

- By law, recreational activities on national wildlife refuges are prohibited unless expressly permitted.
- Entering closed areas, which may contain sensitive plants or wildlife.
- Possession of alcoholic beverages
- Camping and fires.
- Searching for or removal of any natural items such as antlers, skulls, plants, historic, and archaeological features, are protected by Federal law.
- Use of electronic or photographic trail monitoring devices
- Marking or flagging any tree or other refuge feature with reflectors, paint, or other substance.
- Permanent tree stands, nails, screw-in steps, or other items that penetrate the outer bark of a tree
- Access to the refuge from private property
- Use of drones
- Hunting is prohibited within 200 yards of any public use facility.
- Sunday hunting on refuge lands.
- Night hunting on refuge lands.
- Baiting on refuge lands.
- Hunting of rabbits and hares.

Signs and Boundaries: Please respect the following signs



Refuge Boundary:
Entry permitted in accordance with refuge regulations.



Area Beyond this Sign Closed:
All entry prohibited.



No Hunting Zone:
No hunting allowed. Transport of unloaded weapons and harvested game allowed. For game retrieval in no hunting zone, please call the refuge manager at 860-961-4247.