



U.S. Fish & Wildlife Service

Great Meadows

National Wildlife Refuge Hunting Regulations 2020–2021

Welcome

Established in 1944, Great Meadows National Wildlife Refuge (NWR) provides nesting, resting, and feeding habitat for wildlife, with special emphasis on migratory birds. The 3,874 acre refuge is one of eight refuges in the Eastern Massachusetts National Wildlife Refuge Complex, and spans 12 miles of the Sudbury and Concord Rivers. A popular destination for outdoor recreation, Great Meadows NWR allows big game, upland game, and migratory bird hunting in accordance with State laws and refuge specific regulations.

Great Meadows NWR

73 Weir Hill Road
Sudbury, MA 01776
978-443-4661

https://www.fws.gov/refuge/great_meadows/

For State relay service TTY/ Voice: 711

U.S. Fish & Wildlife Service
1-800-344-WILD

August 2020

Our wildlife is a valuable resource. Laws and regulations are intended to protect them. Hunters are encouraged to report any violations by calling the refuge during business hours. After hours contact Massachusetts Environmental Police at 1 800/632 8075. They will contact a Federal Wildlife Officer. The future of hunting on the refuges requires responsible hunter behavior and compliance with regulations. You can help us by complying with these regulations, reporting unethical hunter behavior and providing us with feedback.

Thank you. Have a safe and enjoyable hunting experience.

This is a unit of the National Wildlife Refuge System, a network of lands and waters managed for the benefit of wildlife and people.



Safety

In addition to State regulations, safety zones, closed areas, and archery-only areas are designated on the refuge to maintain safety on and around the refuge.

Firearms

Persons possessing, transporting, or carrying firearms on National Wildlife Refuge System lands must comply with all provisions of State and Federal laws. Persons may only use (discharge) firearms in accordance with refuge regulations (50 CFR 27.42 and specific refuge regulations in 50 CFR Part 32).

Vehicles and Parking

Licensed motor vehicles are permitted only on public use roads as shown on the map. ATVs and UTVs are prohibited. You will receive a parking pass with your refuge hunting permit. The pass must be visible on your dashboard at all times when parked in a designated hunter parking lot.

Boats

Hunters may access the refuge via boat on the Sudbury and Concord Rivers. All state boating laws and hunting regulations must be followed on public waterways.

Accessibility Information

Equal opportunity to participate in and benefit from programs and activities of the U.S. Fish and Wildlife Service is available to all individuals regardless of physical or mental ability. For more information please contact the U.S. Department of the Interior, Office of Equal Opportunity, <https://www.doi.gov/pmb/eeo/public-civil-rights>.

Hunting Regulations

Hunting regulations are designed to provide safe recreational opportunities through wise use of renewable wildlife resources. Hunting is permitted in accordance with Federal regulations governing public use on National Wildlife Refuges as set forth in Title 50 of the Code of Federal Regulations. Hunting will be conducted in accordance with applicable State of Massachusetts regulations subject to the conditions stated below

Access

Hunters may only access the Refuge 1.5 hours before legal sunrise until 1.5 hours after legal sunset. Hunters must park in designated parking areas, as identified on the map below, to access the Refuge for hunting.

Tree Stands

Refuge hunters are allowed to place one tree stand per refuge for any and all hunting seasons permitted. Hunters must mark tree stands/blinds with their refuge permit number in such a way that it is visible from the ground. Tree stands may be put up the first eligible scouting day of the permitted season and must be removed by January 30th or 30 days after the end of permitted season.

Harvest Reporting

Hunters are required to report harvests according to Massachusetts State regulations.

Scouting

Scouting can occur once the hunter has obtained a refuge permit. Hunters are required to have their refuge permits and state license with them at all times when scouting. Scouting can begin no earlier than 4 weeks prior to the opening day of the hunt season from half hour before sunrise to half hour after sunset.

Hunt Type	Season Dates	Harvest/ Bag Limit	Hunt Areas	Other Regulations
Big Game (White-tailed deer, wild turkey, black bear)	<p>Bear hunting is open during all State seasons.</p> <p>White-tailed deer and turkey hunting is open during all State seasons that permit the use of archery equipment.</p>	State regulations apply with exceptions listed in Prohibited Activities and/or noted under Other Regulations.	<p>All areas of the refuge except for the units south of State Route 225 and north of Sherman Bridge Road are open for black bear hunting.</p> <p>All areas of the refuge open to hunting are open for white-tailed deer and turkey hunting.</p>	Big game may only be hunted with archery equipment.
Upland Game (Coyote)	Coyote hunting is open concurrent with the deer hunting season.	State regulations apply with exceptions listed in Prohibited Activities and/or noted under Other Regulations.	All areas of the refuge open to hunting are open for coyote hunting.	<p>Coyote may only be hunted with archery equipment.</p> <p>Night hunting and baiting are NOT permitted on the refuge.</p>
Migratory Bird (Waterfowl)	Migratory bird hunting is conducted in alignment with the State seasons and method of take.	State regulations apply with exceptions listed in Prohibited Activities and/or noted under Other Regulations.	Waterfowl hunting is open on the following units: Concord River Waterfowl, North of Sherman Bridge Road, Sudbury River Waterfowl, Pelham Island, and South of Heard Pond.	Non-toxic shot is required for migratory bird hunting.

Prohibited Activities

- Possession of alcoholic beverages
- Camping and Fires
- Night Hunting
- Baiting
- Trimming or cutting vegetation
- Searching for or removal of any natural items such as antlers, skulls, plants, historic and archaeological artifacts
- Driving of deer by any means
- Baiting or hunting over bait
- Use of a spotlight or other artificial light to locate wildlife
- Use of electronic calls
- Marking of any tree, trail, or other refuge feature with flagging or paint
- Permanent tree stands, nails, screw-in steps, or other items that penetrate the outer bark of a tree
- Firearms capable of firing center fire rifle and pistol cartridge ammunition
- Possession of loaded firearm, discharge of firearm, or hunting is prohibited within 500 feet of any dwelling
- Discharge of any firearm or release of any arrow across roads or within 150 feet of roads

Great Meadows National Wildlife Refuge Sudbury Unit Hunt Map

South Lincoln

WHITE POND
PARK

Closed

North Sudbury

North of
Sherman
Bridge Rd.

Sherman Bridge Road

Lincoln Road

Sudbury River
Waterfowl

Water Row

126



Sudbury

Tower Hill

27

Wolbach-Strand

P Parking

Refuge Boundary

Trails

Closed

North of Sherman Bridge Road:
(Archery Only Except Waterfowl)
Waterfowl, deer, coyote, turkey.

Pelham Island:
(Archery Only Except Waterfowl)
Waterfowl, bear, deer, coyote, turkey.

South of Heard Pond:
(Archery Only Except Waterfowl)
Waterfowl, bear, deer, coyote, turkey.

Stone Bridge. Bear, deer, coyote,
turkey.

Sudbury River Waterfowl. Waterfowl,
bear, deer, coyote, turkey.

Water Row. Bear, deer, coyote, turkey.

Wolbach-Strand. Bear, deer, coyote,
turkey.

East Sudbury
Station

Pelham Island

Heard
Pond

South
of Heard
Pond

Stone Bridge

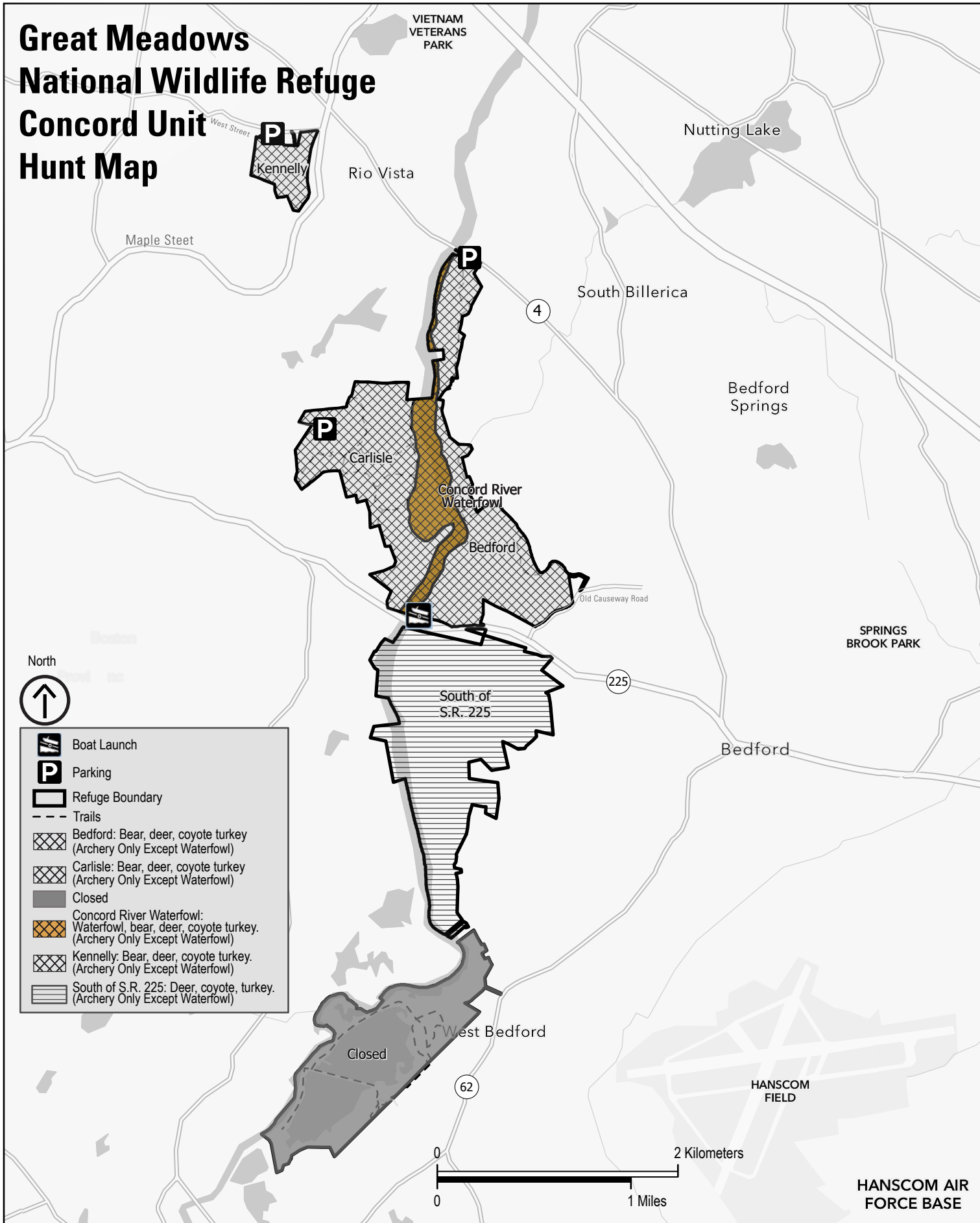
20




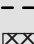


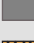


Pelham Island Road

Stonebridge Road



Great Meadows National Wildlife Refuge Concord Unit Hunt Map



-  Boat Launch
-  Parking
-  Refuge Boundary
-  Trails
-  Bedford: Bear, deer, coyote turkey
(Archery Only Except Waterfowl)
-  Carlisle: Bear, deer, coyote turkey
(Archery Only Except Waterfowl)
-  Closed
-  Concord River Waterfowl:
Waterfowl, bear, deer, coyote turkey.
(Archery Only Except Waterfowl)
-  Kennelly: Bear, deer, coyote turkey.
(Archery Only Except Waterfowl)
-  South of S.R. 225: Deer, coyote, turkey.
(Archery Only Except Waterfowl)



HANSCOM AIR
FORCE BASE