

# Potomac River National Wildlife Refuge Complex

## *Fishing*



### **We allow fishing on the refuge in accordance with State regulations subject to certain conditions:**

All anglers must comply with Federal, State and refuge specific rules and regulations. Please refer to the Commonwealth of Virginia Fishing and Boating Guide for license requirements and other important information. Visit the Virginia Department of Wildlife Resources webpage: <https://dwr.virginia.gov/fishing/>

### **Permits**

A refuge permit is not required to fish.

### **Featherstone National Wildlife Refuge**

#### Farm Creek Fishing Unit

Non-motorized boats only

#### Neabsco Creek Fishing Unit:

Motorized and non-motorized boats permitted.

### **E.H. Mason Neck National Wildlife Refuge**

#### Great Marsh Fishing Unit

Non-motorized boats only

### **Occoquan Bay National Wildlife Refuge**

#### Marumsco Creek Fishing Unit

Non-motorized boats only

### **Access**

Fishing units are not accessible via land. No boat launches exist on the refuge complex. State and municipal boat launches are within a short distance of refuge fishing areas and can be used for the launch and retrieval of boats.

### **Reminders**

- Nontoxic tackle only, no lead.
- Fishing from the shoreline is prohibited.
- Fishing access is via water only. There is no access to fishing units by land.
- All trash, including fishing line and hooks, must be packed out and disposed of properly.

### **For more information, contact:**

Potomac River National Wildlife Refuge Complex  
14050 Dawson Beach Rd, Woodbridge, VA 22191  
703/490-4979

[www.fws.gov/refuge/Featherstone](http://www.fws.gov/refuge/Featherstone)

**Federal Relay Service** for the deaf and hard-of-hearing  
1 800/877 8339

### **U.S. Fish & Wildlife Service**

1 800/344 WILD

<http://www.fws.gov>

September 2021



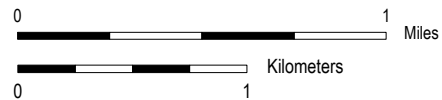


This map layer is intended for informational purposes only and does not constitute a legal survey.





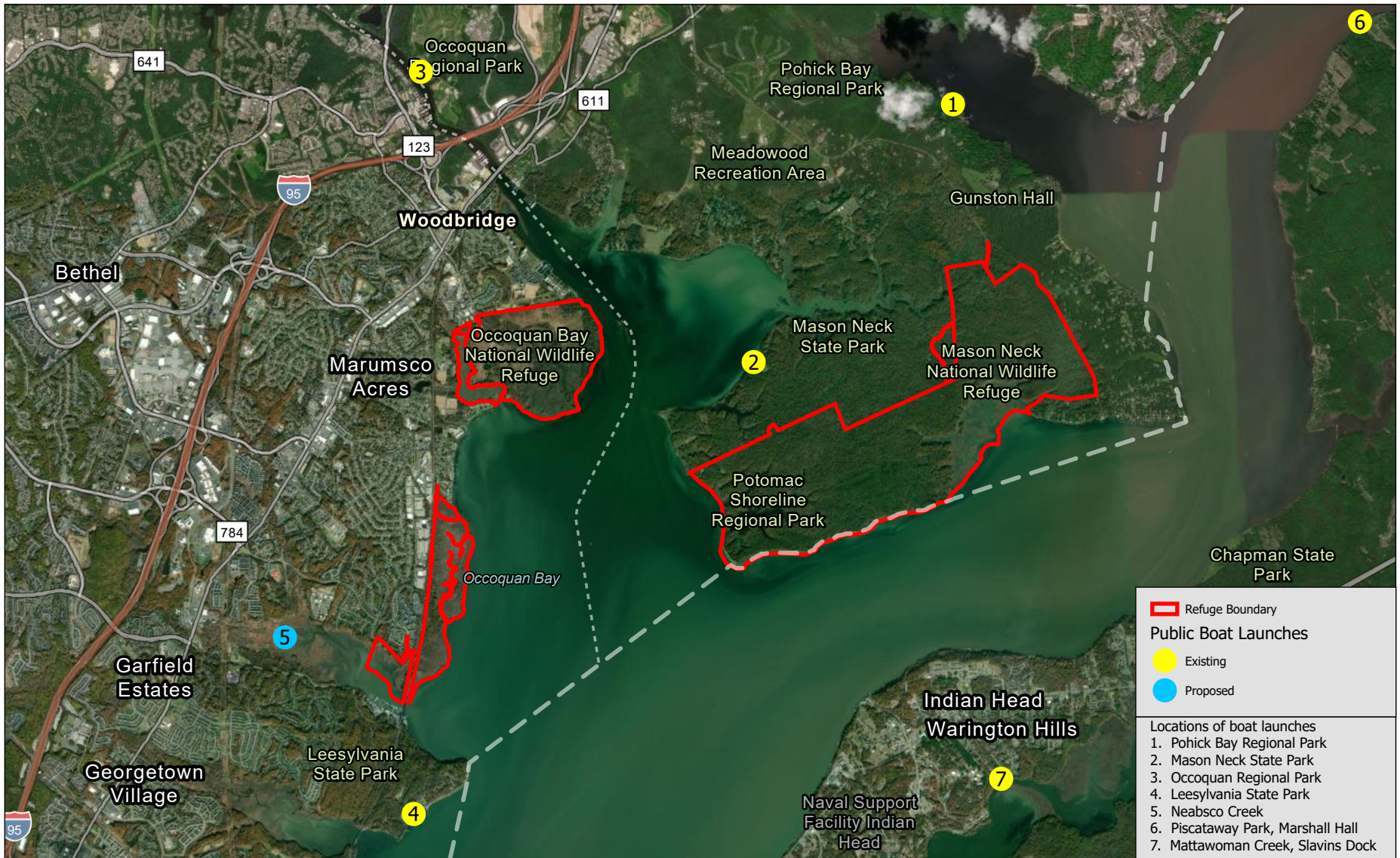
This map is intended for informational purposes only and does not constitute a legal survey.





This map is intended for informational purposes only and does not constitute a legal survey.





This map is intended for informational purposes only and does not constitute a legal survey.

