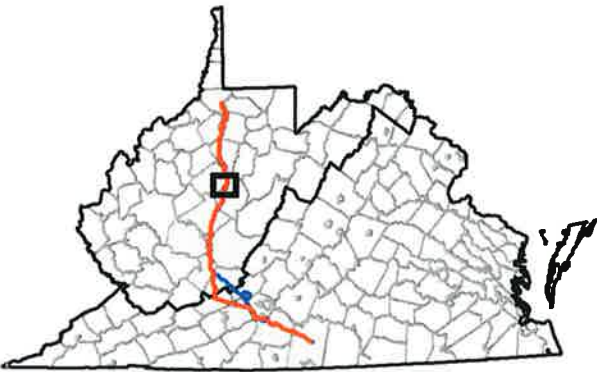


Figure 2. Rare plant surveys along the proposed Mountain Valley Pipeline Project in West Virginia and Virginia.

MAP 1

- Proposed Route
- Access Road
- Compressor Station
- Laydown Yard
- Rare Plant Survey Segment
- Running Buffalo Clover



Service Layer Credits: Copyright:© 2011
National Geographic Society, i-cubed



ENVIRONMENTAL SOLUTIONS
& INNOVATIONS, INC.

Project No. 593

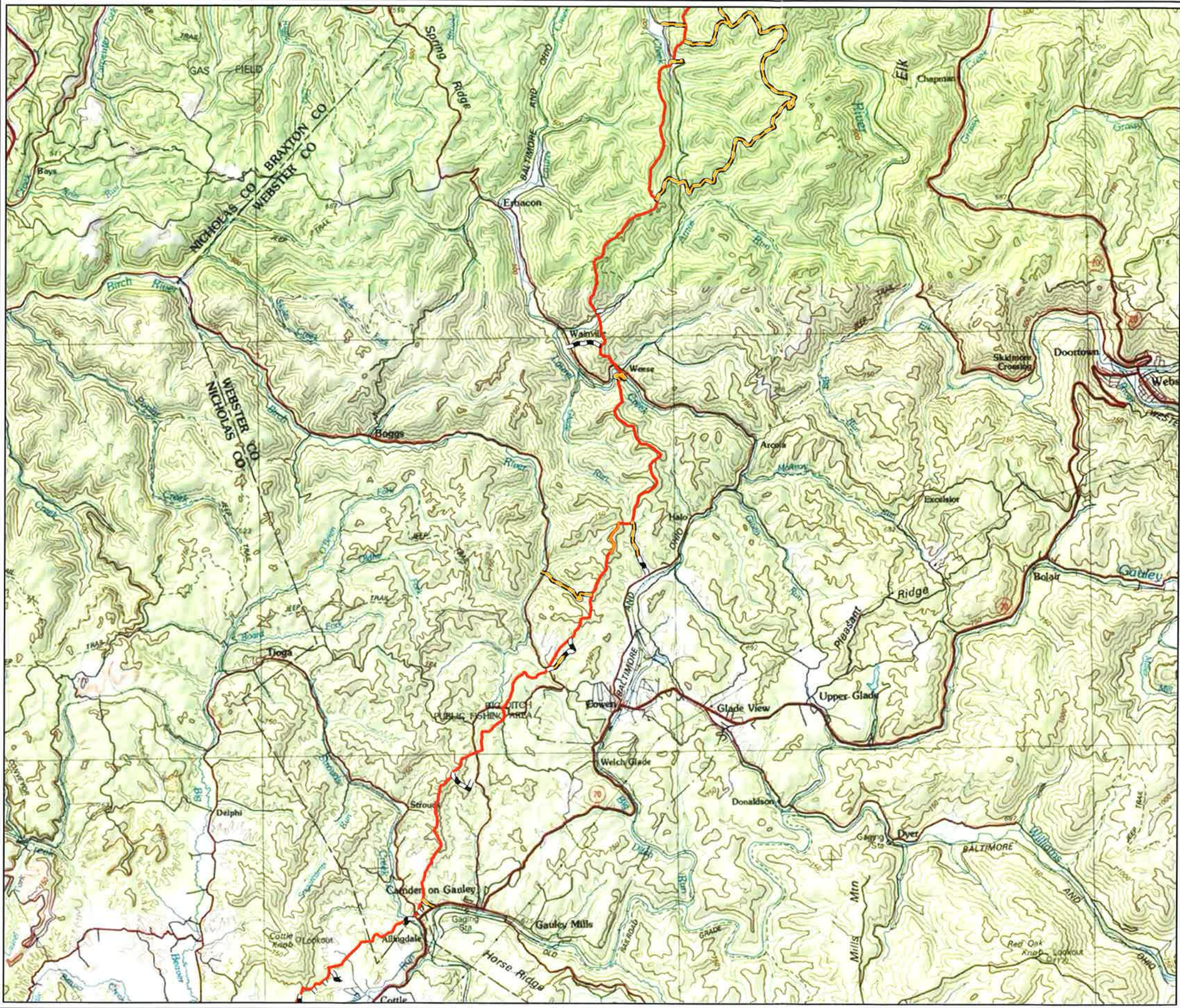
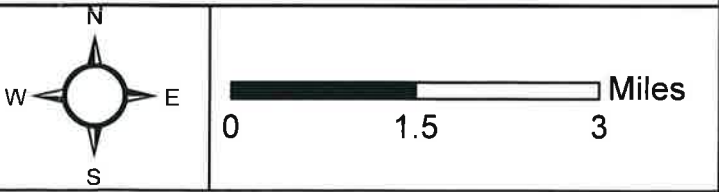
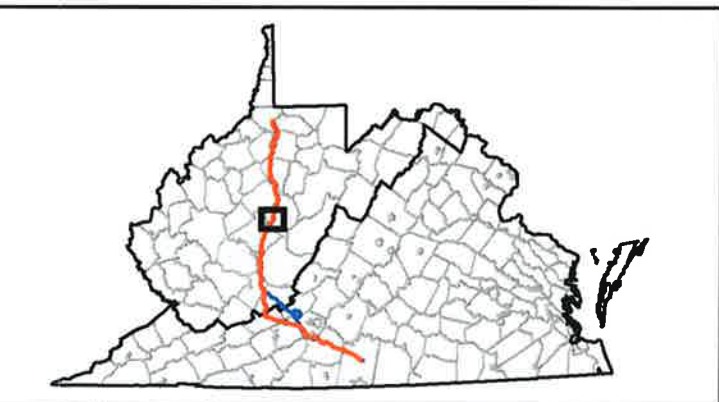


Figure 2. Rare plant surveys along the proposed Mountain Valley Pipeline Project in West Virginia and Virginia.

MAP 2

- Proposed Route
- Access Road
- Rare Plant Survey Segment
- Running Buffalo Clover



Service Layer Credits: Copyright:© 2011
National Geographic Society, i-cubed

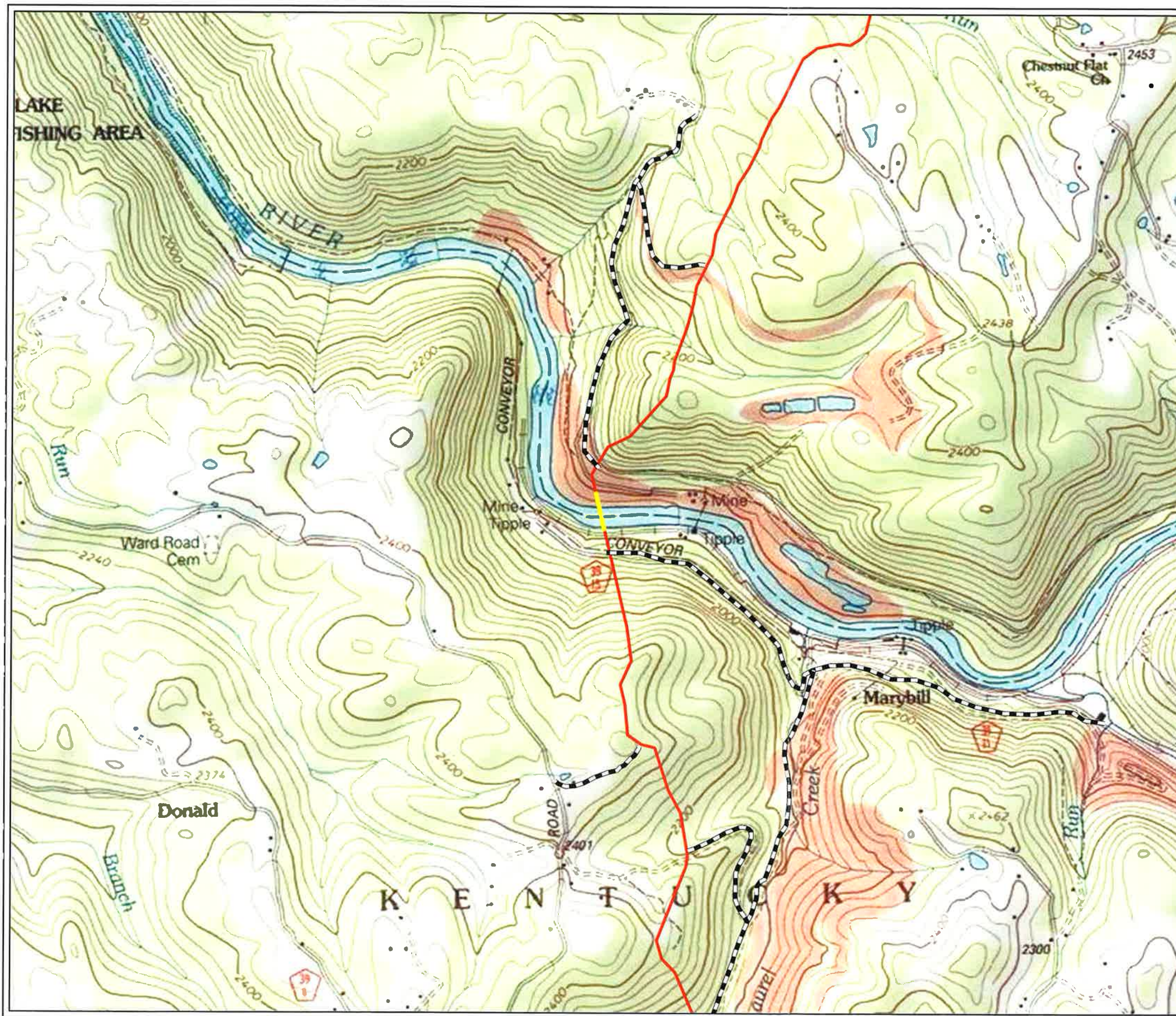
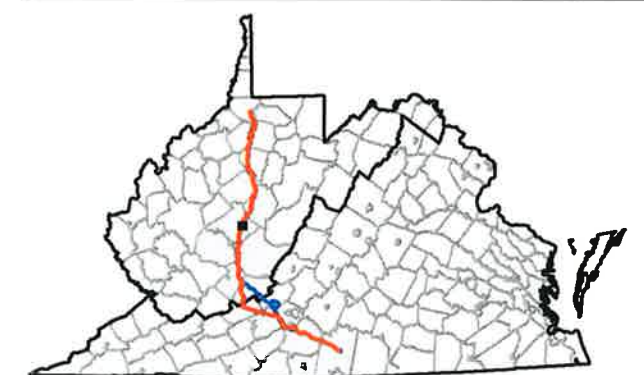


Figure 2. Rare plant surveys along the proposed Mountain Valley Pipeline Project in West Virginia and Virginia.

MAP 3

- Proposed Route
- Access Road
- Rare Plant Survey Segment
- Virginia Spiraea (Gauley River crossing)



Service Layer Credits: Copyright:© 2011
National Geographic Society, i-cubed

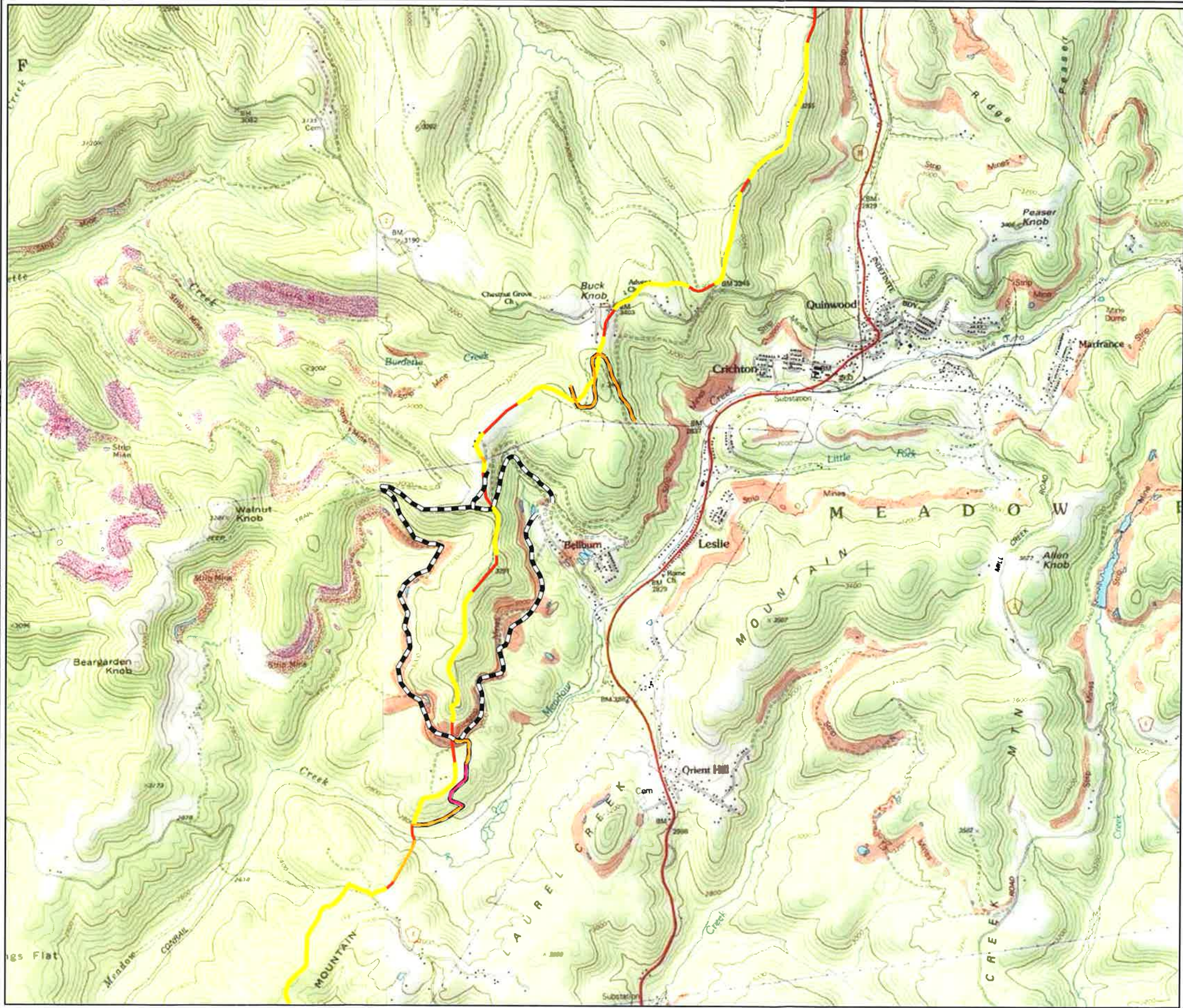
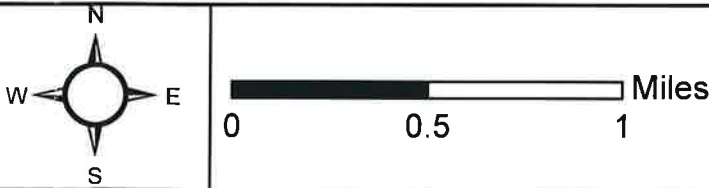
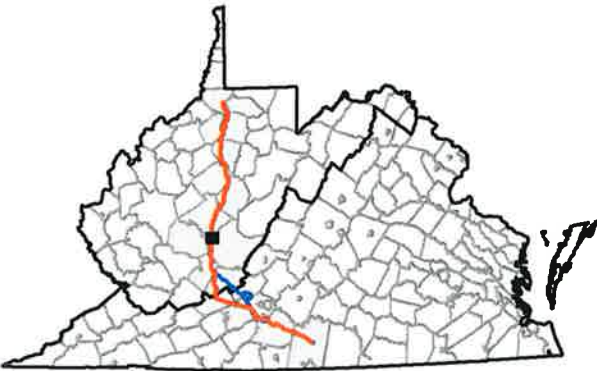


Figure 2. Rare plant surveys along the proposed Mountain Valley Pipeline Project in West Virginia and Virginia.

MAP 4

- Proposed Route
- Access Road
- Rare Plant Survey Segment
 - Running Buffalo Clover (RBC)
 - Small Whorled Pogonia (SWP)
 - RBC and SWP



Service Layer Credits: Copyright:© 2011
National Geographic Society, i-cubed

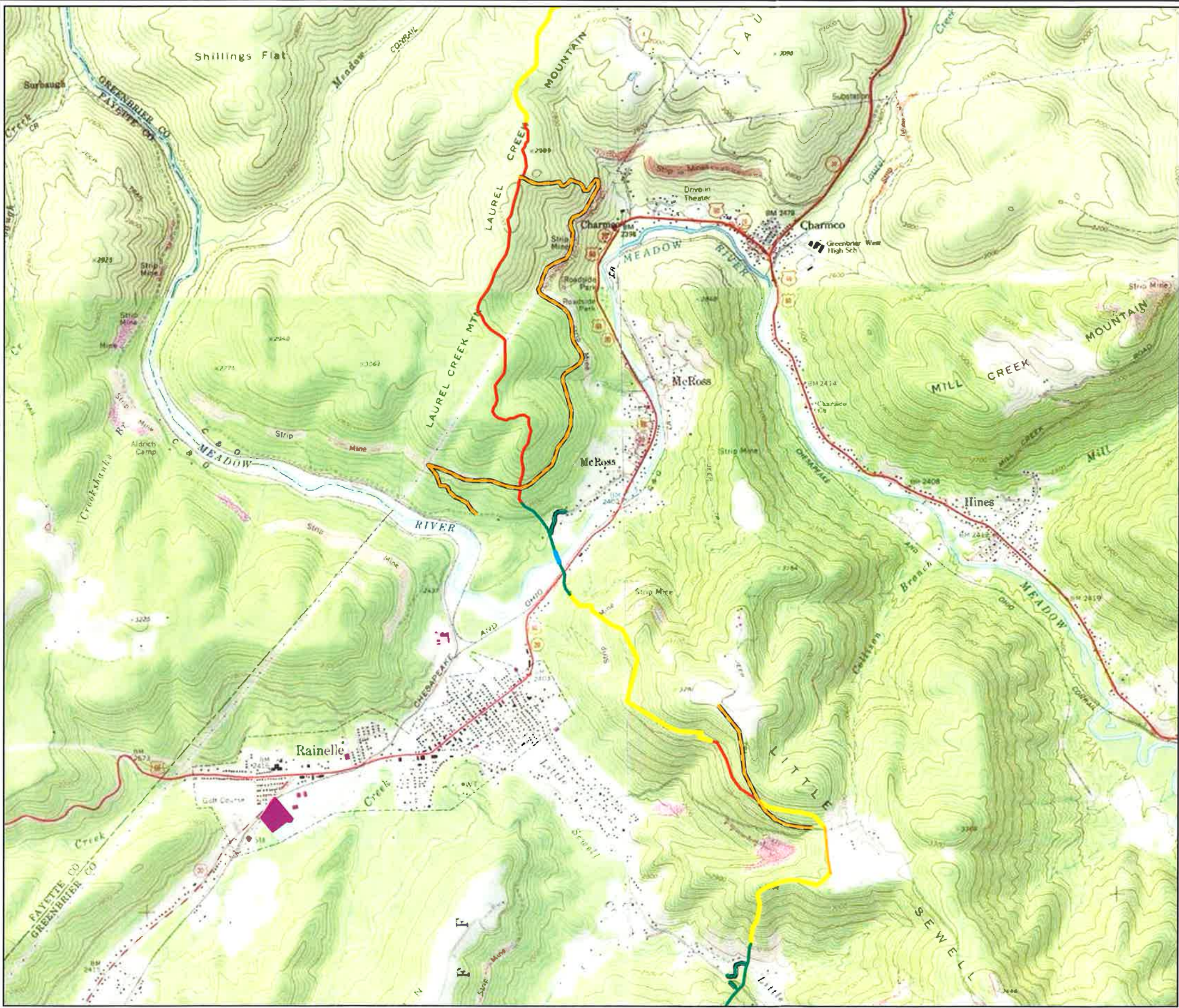


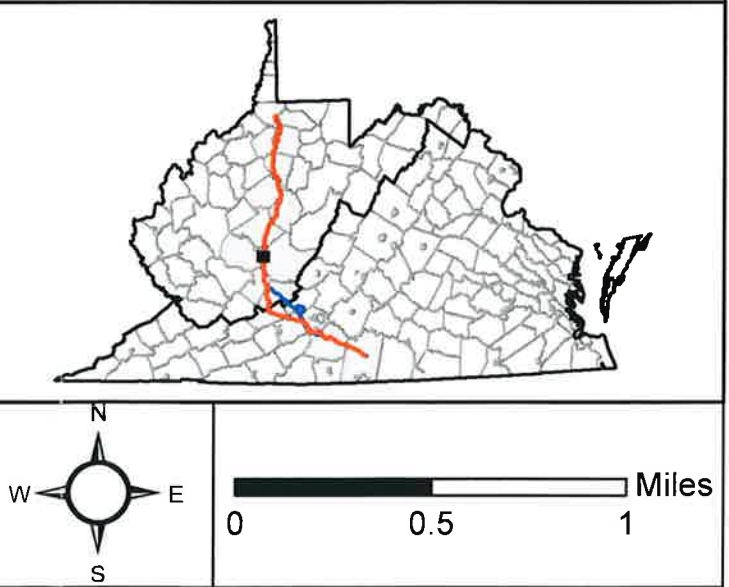
Figure 2. Rare plant surveys along the proposed Mountain Valley Pipeline Project in West Virginia and Virginia.

MAP 5

- Proposed Route
- Access Road
- Laydown Yard

Rare Plant Survey Segment

- Running Buffalo Clover
- Virginia Spiraea (Meadow River crossing)
- Shale Barren Rock Cress
- Small Whorled Pogonia



Service Layer Credits: Copyright© 2011 National Geographic Society, i-cubed

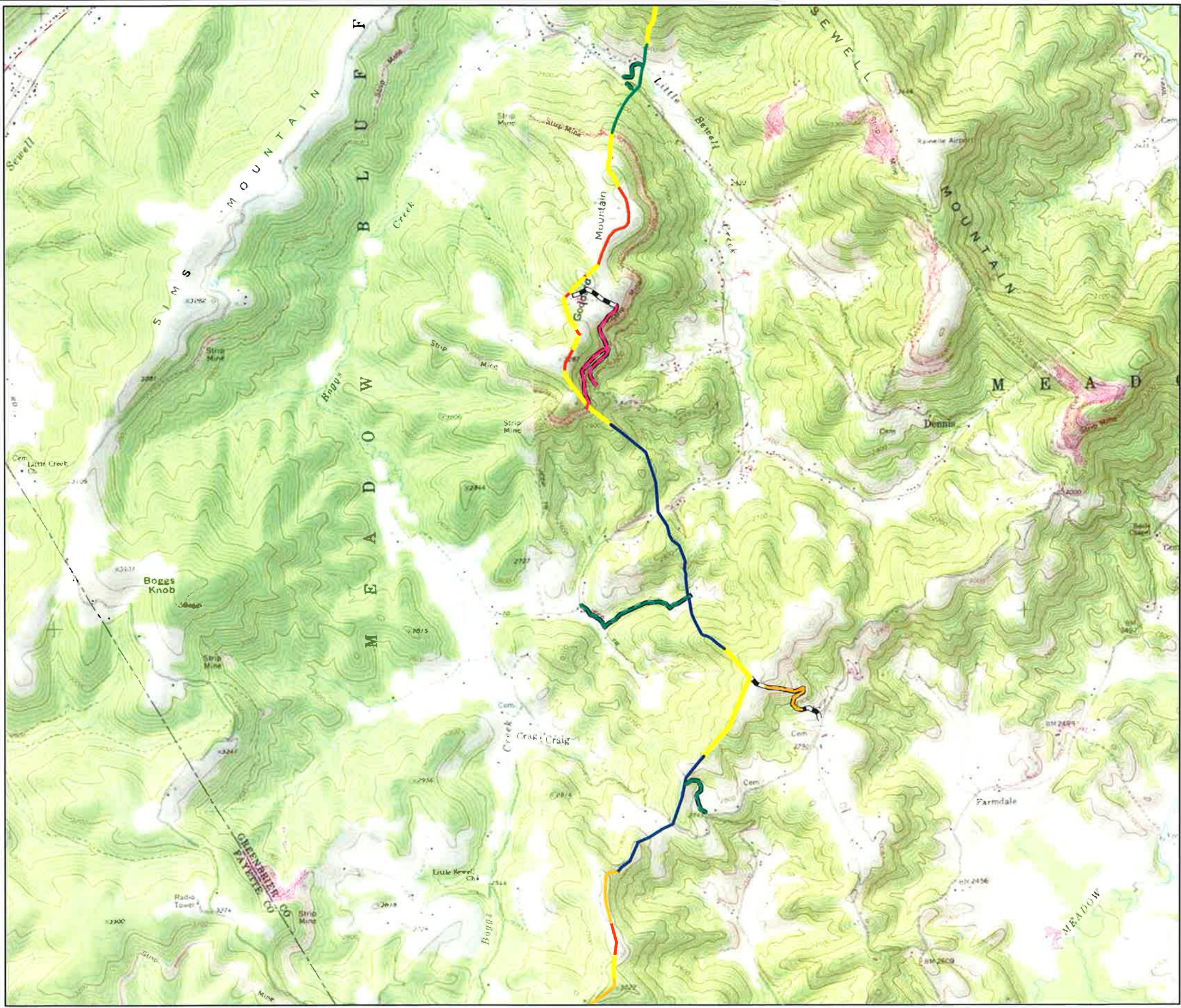


Figure 2. Rare plant surveys along the proposed Mountain Valley Pipeline Project in West Virginia and Virginia.

MAP 6

Proposed Route

Access Road

Rare Plant Survey Segment

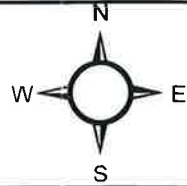
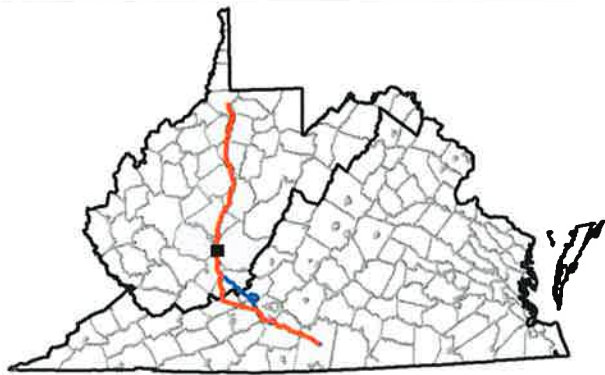
Running Buffalo Clover (RBC)

Small Whorled Pogonia (SWP)

RBC and SWP

Shale Barren Rock Cress (SBRC)

SBRC and SWP



0 0.5 1 Miles

Service Layer Credits: Copyright© 2011
National Geographic Society, i-cubed



ENVIRONMENTAL SOLUTIONS
& INNOVATIONS, INC.

Project No. 593

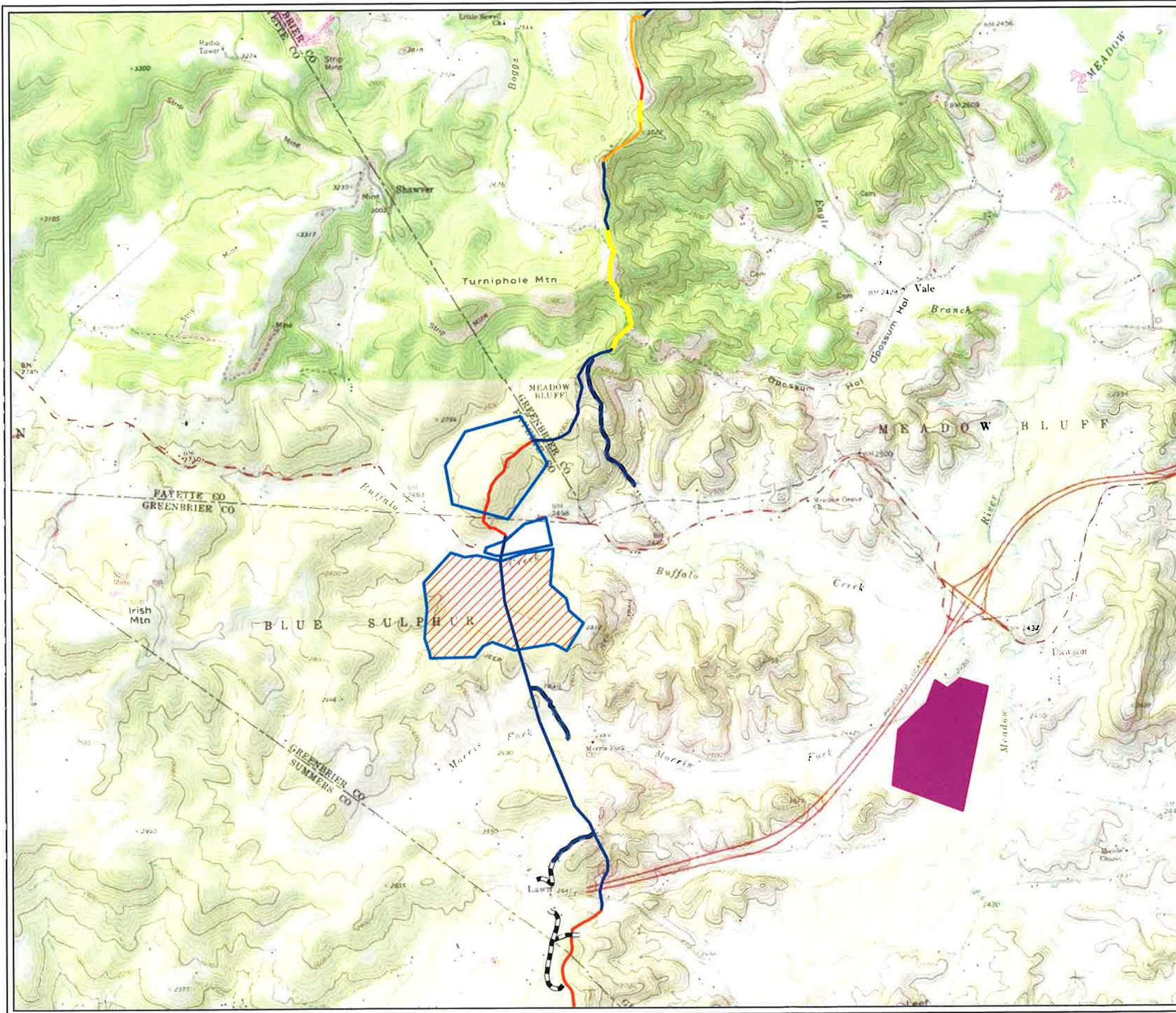
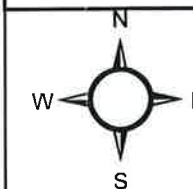
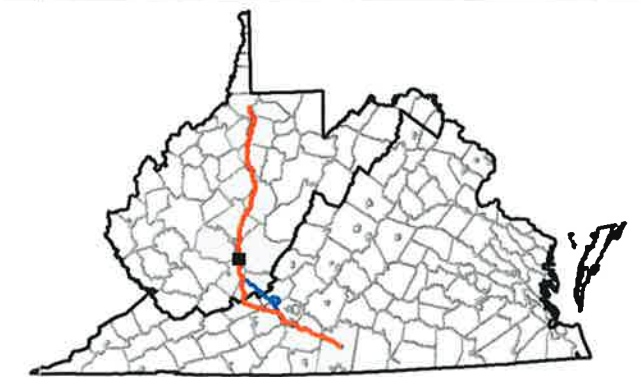


Figure 2. Rare plant surveys along the proposed Mountain Valley Pipeline Project in West Virginia and Virginia.

MAP 7

- Proposed Route
- - - Access Road
- Compressor Station
- Laydown Yard
- Rare Plant Survey Segment**
 - Running Buffalo Clover (RBC)
 - Small Whorled Pogonia (SWP)
 - Shale Barren Rock Cress (SBRC) and SWP
- Rare Plant Survey Area**
 - RBC, SWP, and SBRC



0 0.5 1 Miles

Service Layer Credits: Copyright:© 2011
National Geographic Society, i-cubed



ENVIRONMENTAL SOLUTIONS
& INNOVATIONS, INC.

Project No. 593

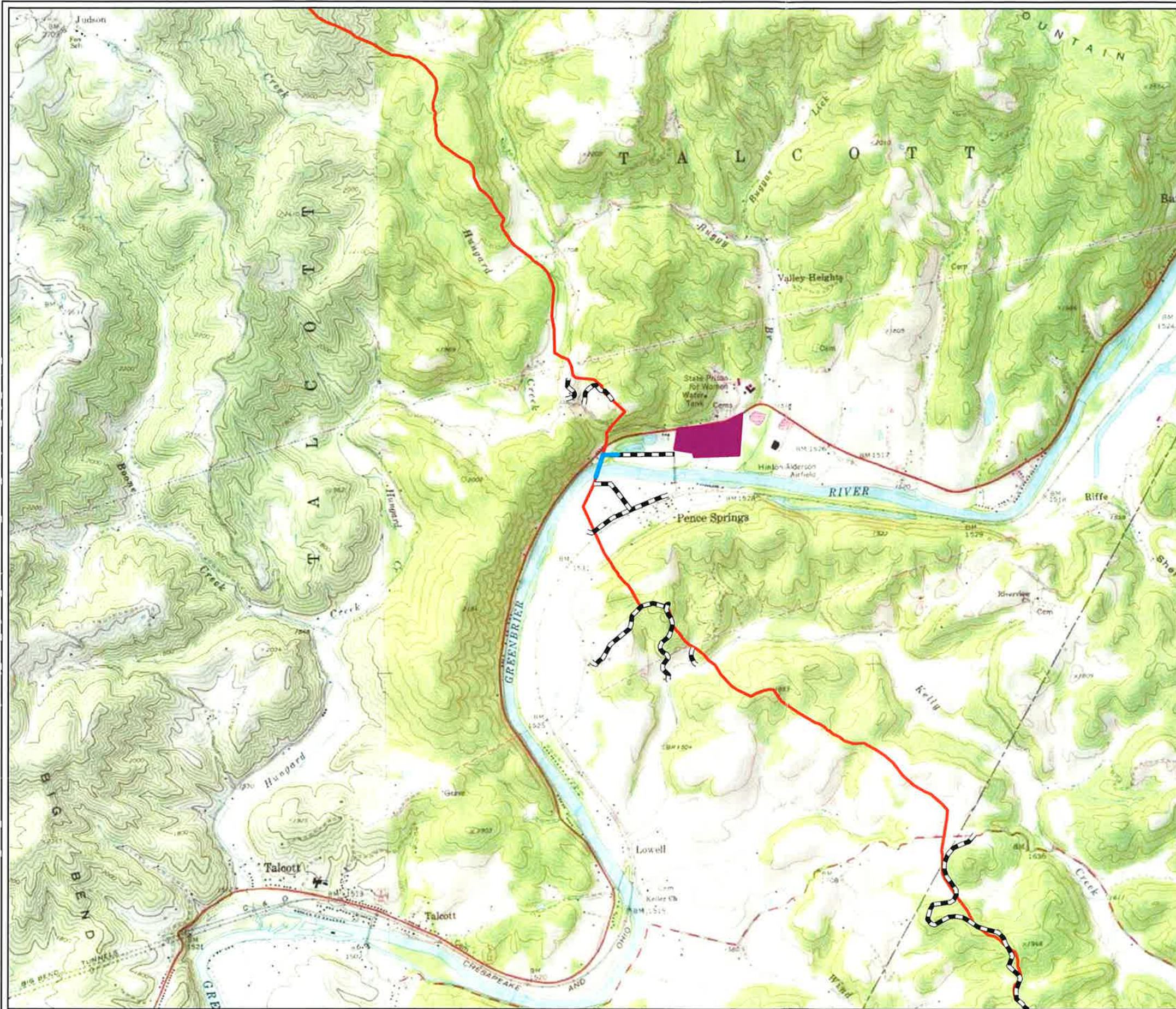


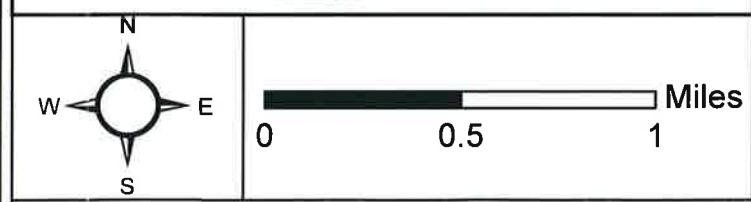
Figure 2. Rare plant surveys along the proposed Mountain Valley Pipeline Project in West Virginia and Virginia.

MAP 8

- Proposed Route
- Access Road
- Laydown Yard

Rare Plant Survey Segment

- Virginia Spiraea (Greenbrier River crossing)



Service Layer Credits: Copyright© 2011
National Geographic Society, i-cubed

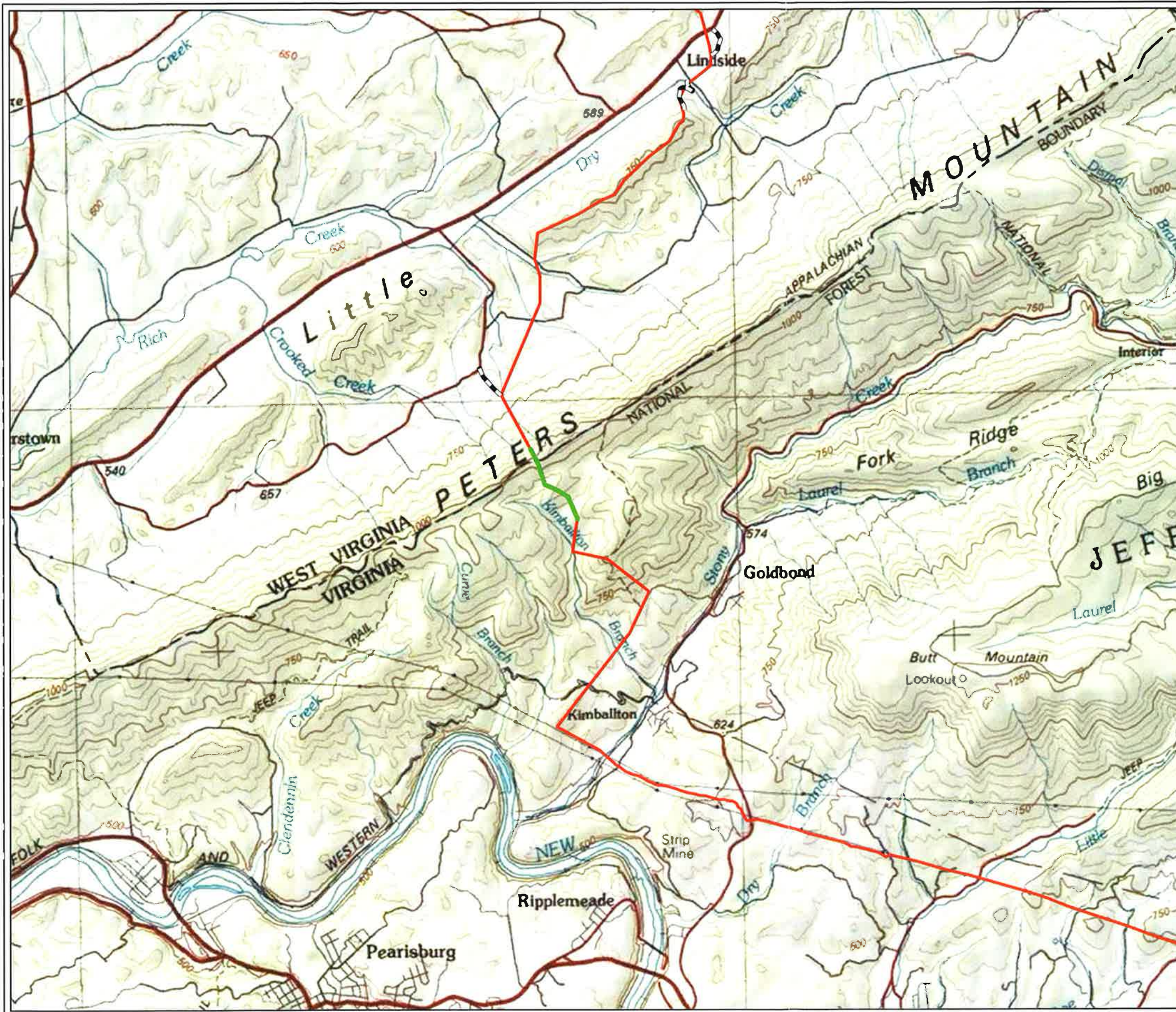
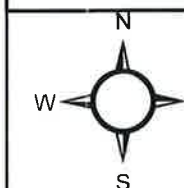
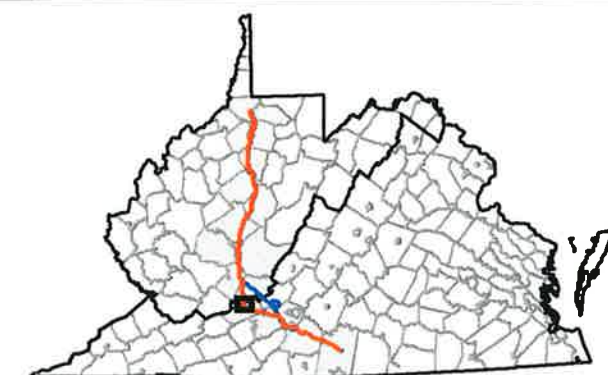


Figure 2. Rare plant surveys along the proposed Mountain Valley Pipeline Project in West Virginia and Virginia.

MAP 9

- Proposed Route
- - - Access Road
- Rare Plant Survey Segment**
- Northeastern Bulrush



0 1 2 Miles

Service Layer Credits: Copyright:© 2011
National Geographic Society, i-cubed



ENVIRONMENTAL SOLUTIONS
& INNOVATIONS, INC.

Project No. 593

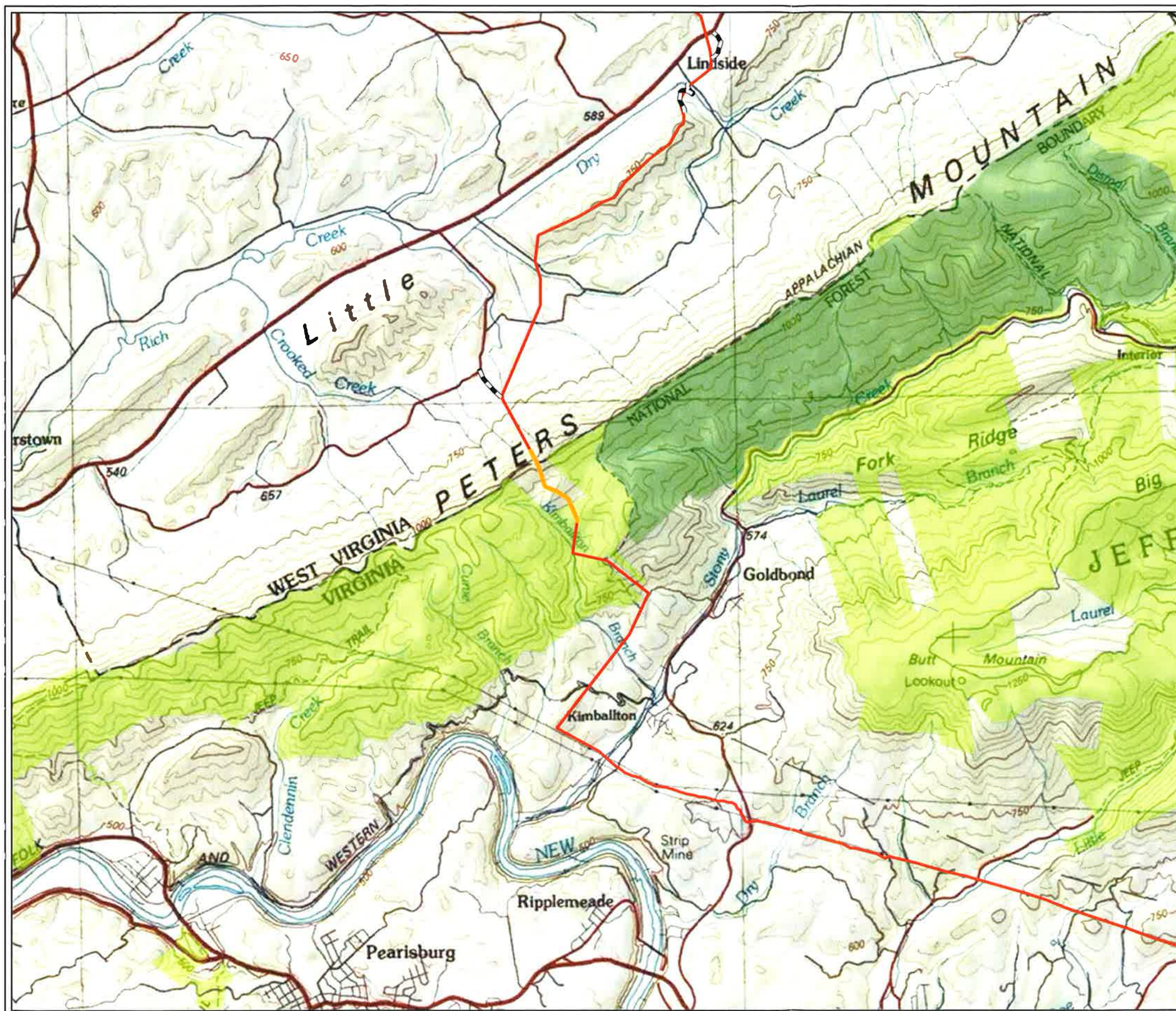
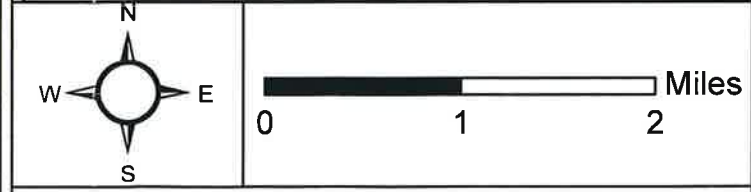
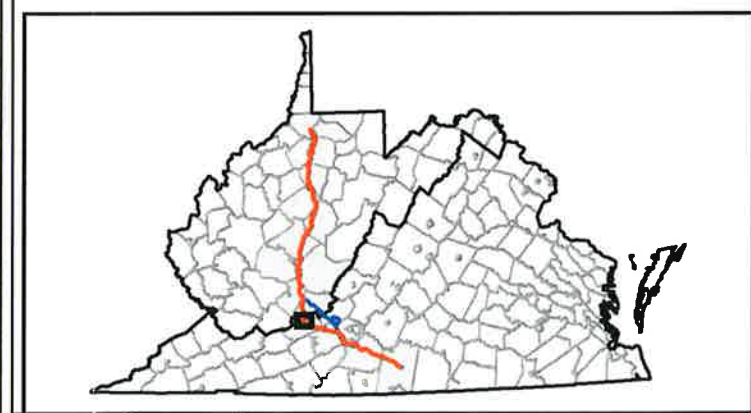


Figure 2. Rare plant surveys along the proposed Mountain Valley Pipeline Project in West Virginia and Virginia.

MAP 10

- Proposed Route
- - - Access Road
- Peters Mountain
- Jefferson National Forest
- Rare Plant Survey Segment**
- Northeastern Bulrush



Service Layer Credits: Copyright © 2011
National Geographic Society, i-cubed

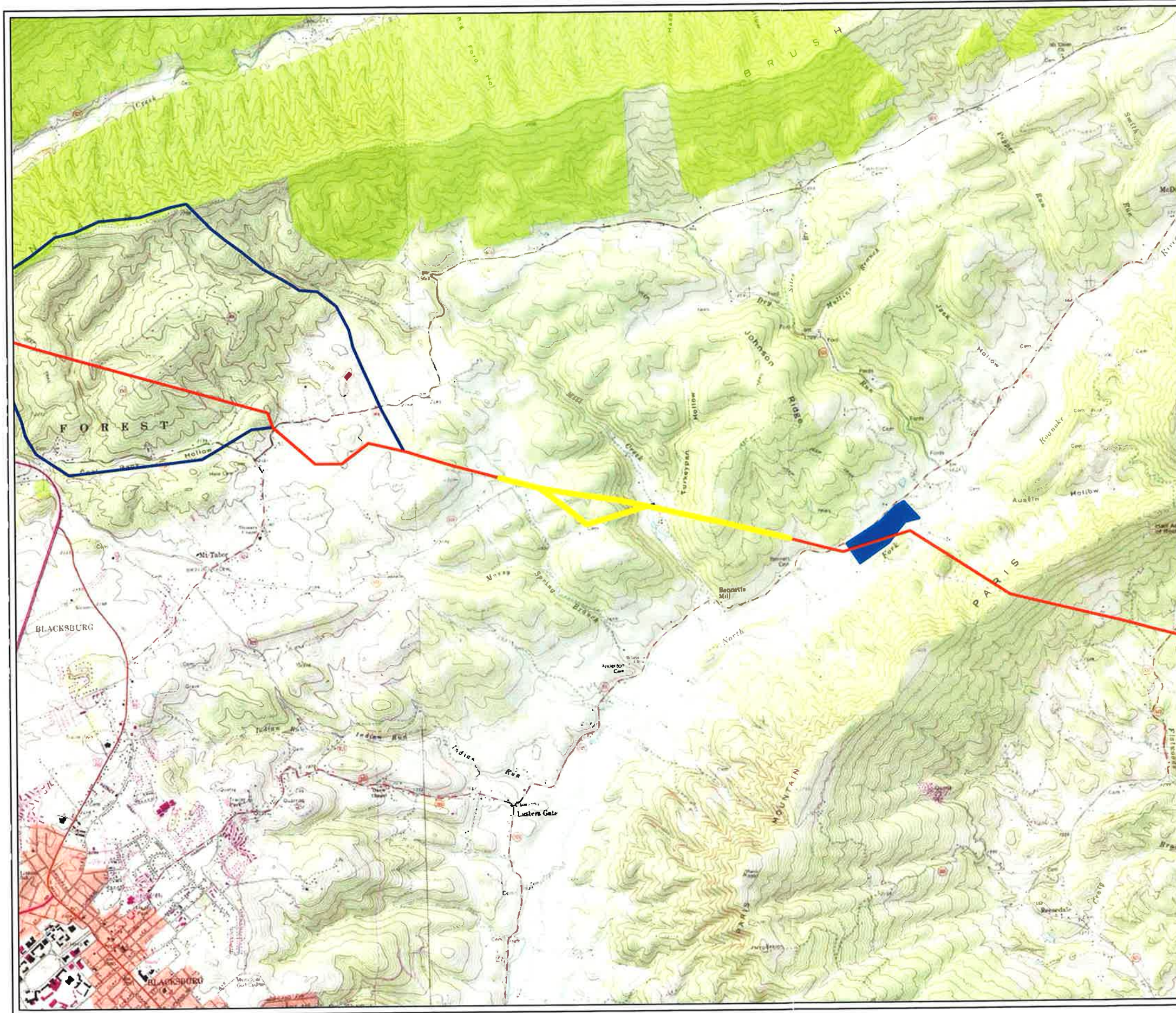
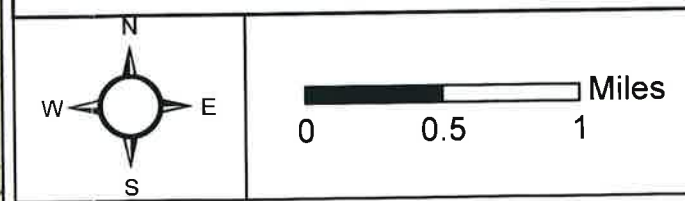
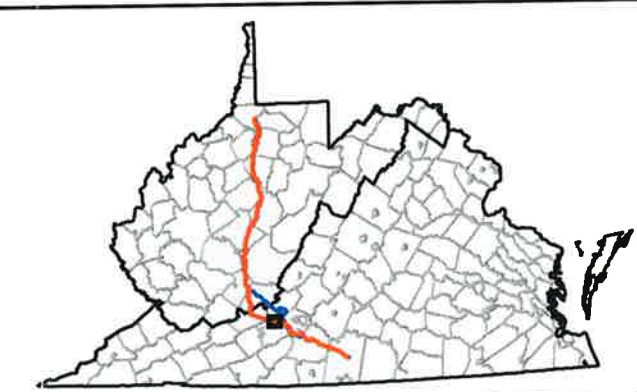


Figure 2. Rare plant surveys along the proposed Mountain Valley Pipeline Project in West Virginia and Virginia.

MAP 11

- Proposed Route
- Alternate Route
- Compressor Station
- Jefferson National Forest
- Rare Plant Survey Segment**
- Smooth Coneflower



Service Layer Credits: Copyright:© 2011
National Geographic Society, i-cubed

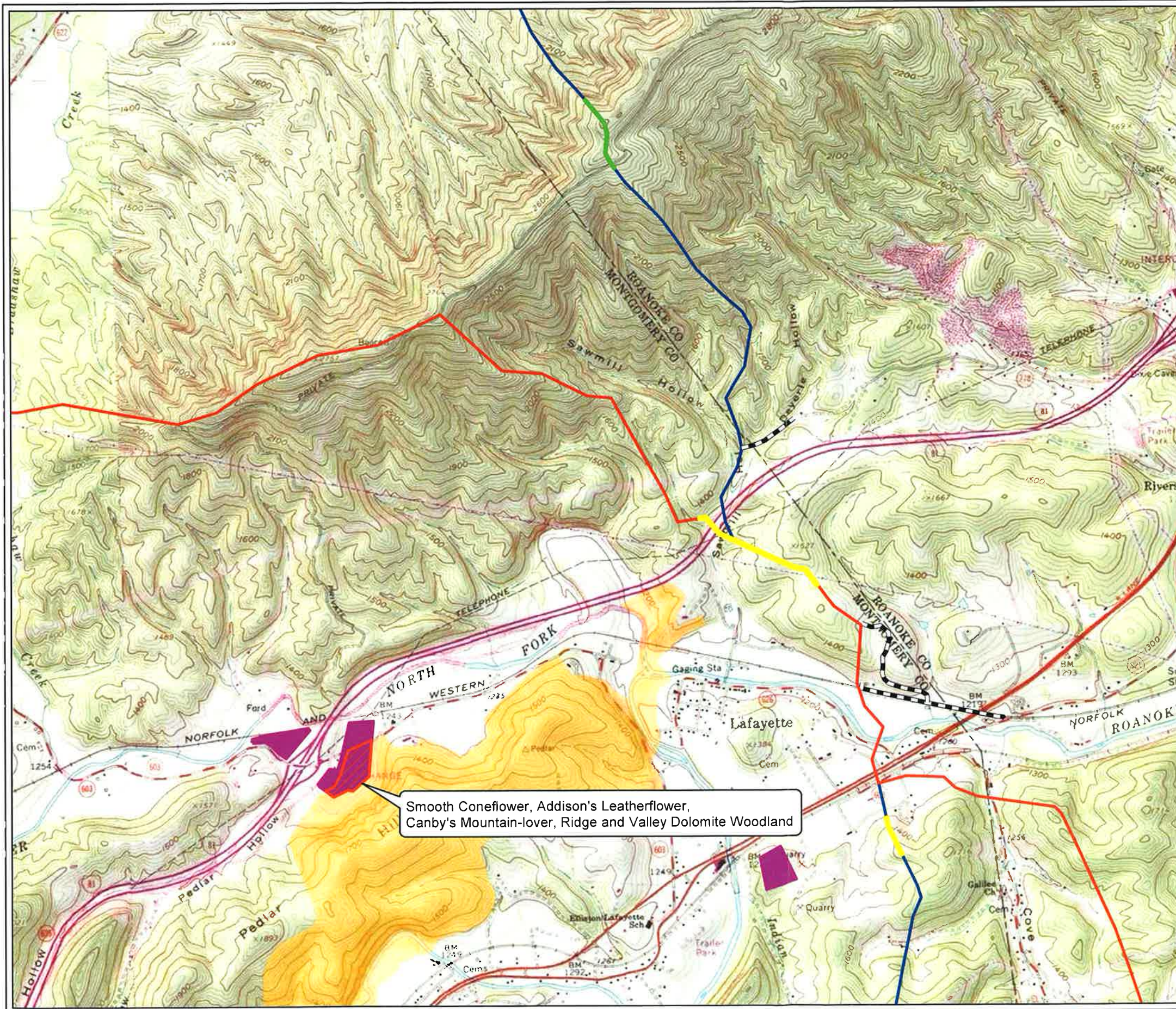


Figure 2. Rare plant surveys along the proposed Mountain Valley Pipeline Project in West Virginia and Virginia.

MAP 12

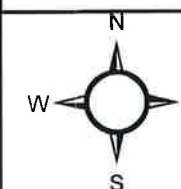
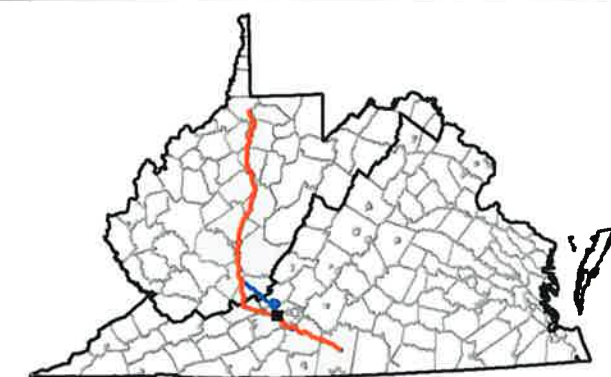
- Proposed Route
- Alternate Route
- Access Road
- Laydown Yard
- Elliston Glades Conservation Site

Rare Plant Survey Segment

- Common Snowberry
- Smooth Coneflower

Rare Plant Survey Area

- Multiple Species



0 0.25 0.5 Miles

Service Layer Credits: Copyright© 2011
National Geographic Society, i-cubed



ENVIRONMENTAL SOLUTIONS
& INNOVATIONS, INC.

Project No. 593

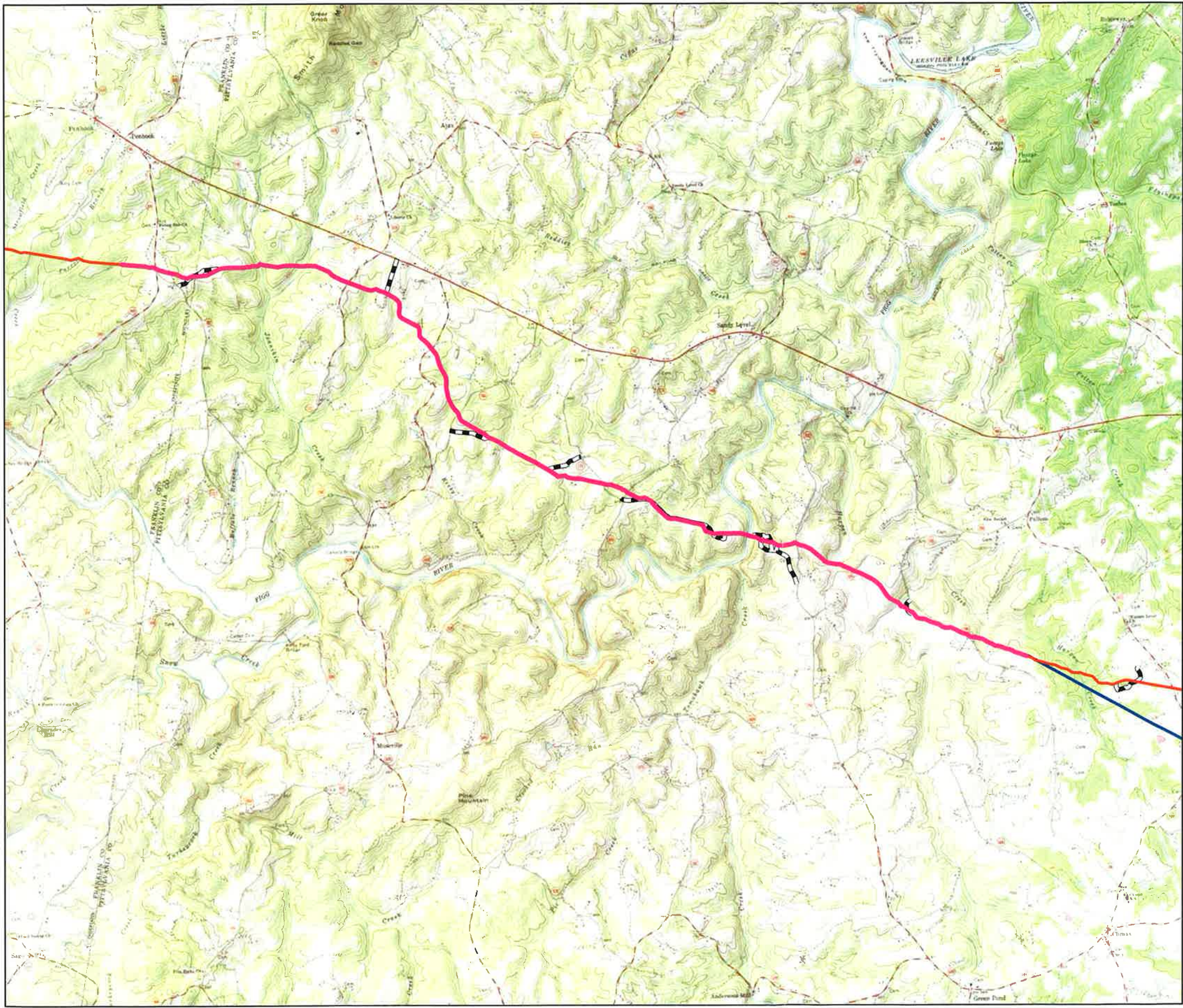
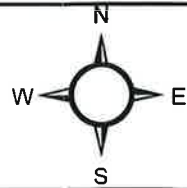
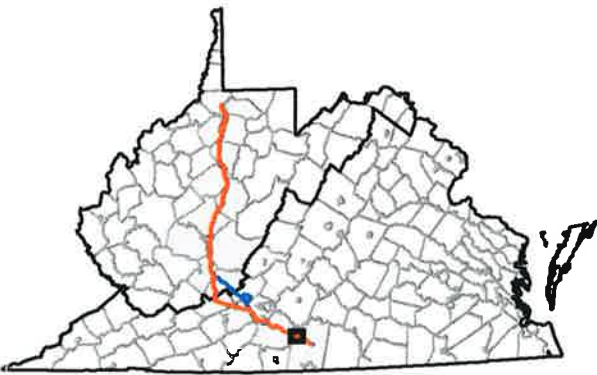


Figure 2. Rare plant surveys along the proposed Mountain Valley Pipeline Project in West Virginia and Virginia.

MAP 13

- Proposed Route
- Alternate Route
- Access Road
- Rare Plant Survey Segment**
- Sweet-shrub



0 0.5 1 Miles

Service Layer Credits: Copyright:© 2011
National Geographic Society, i-cubed



ENVIRONMENTAL SOLUTIONS
& INNOVATIONS, INC.

Project No. 593

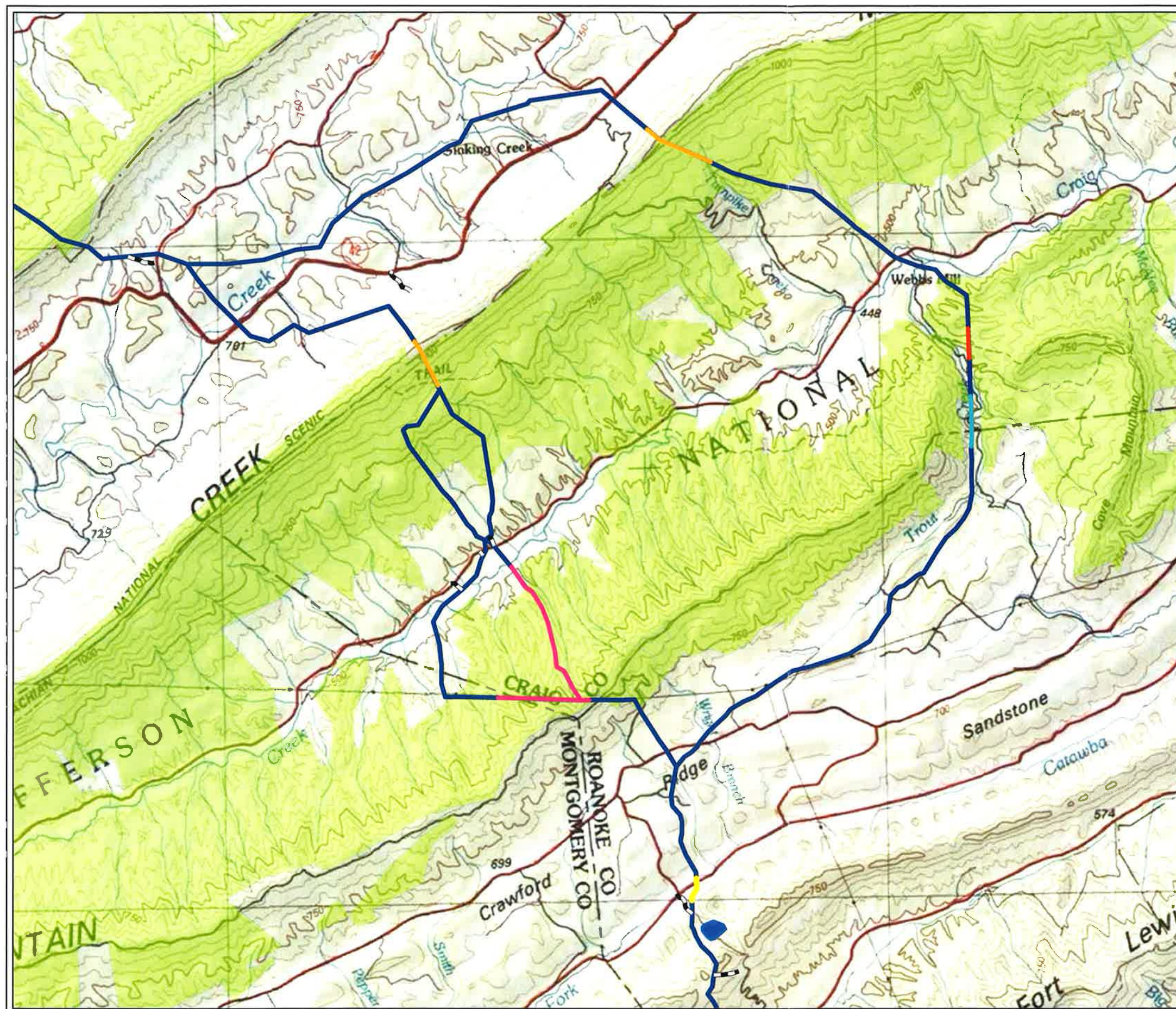


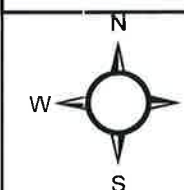
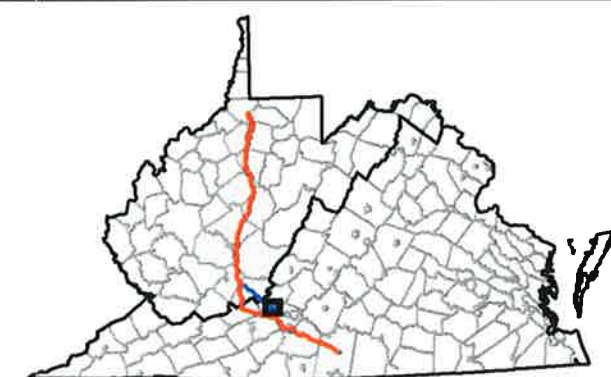
Figure 2. Rare plant surveys along the proposed Mountain Valley Pipeline Project in West Virginia and Virginia.

MAP 14

- Alternate Route
- - - Access Road
- Compressor Station
- Jefferson National Forest

Rare Plant Survey Segment

- Box Huckleberry
- Cent. Appalach. Xeric Shale
- Northeastern Bulrush
- Piratebush
- Smooth Coneflower



0 0.75 1.5 Miles

Service Layer Credits: Copyright:© 2011
National Geographic Society, i-cubed



ENVIRONMENTAL SOLUTIONS
& INNOVATIONS, INC.

Project No. 593