

From: [Stahl, Megan D.](#)
To: [Jennifer Stanhope](#)
Cc: [Taina Pankiewicz](#)
Subject: MVP Information
Date: Monday, October 09, 2017 5:59:45 PM
Attachments: [MVP_593_Plant_survey_Parcel_WV_GR_065_Aerial_20171009.](#)
[MVP_593_Plant_survey_Parcel_WV_GR_065_USGS_20171009.](#)
[MVP_593_Plant_survey_Parcel_WV_SU_046_Aerial_20171009.](#)
[MVP_593_Plant_survey_Parcel_WV_SU_046_USGS_20171009.](#)

Jen,

I am trying to compile the information that you requested last week and I have a few questions. The E&S plans and SWPP are still in development and have not been approved yet. The POD was recently submitted. These documents are very large and I cannot send them by email. Is there particular information you are looking for that I can send to you, or do you need the entire files?

Can you clarify which satellites you were referring to that could cause concerns for light and noise?

I attached the maps of the unsurveyed areas for plants, which includes:

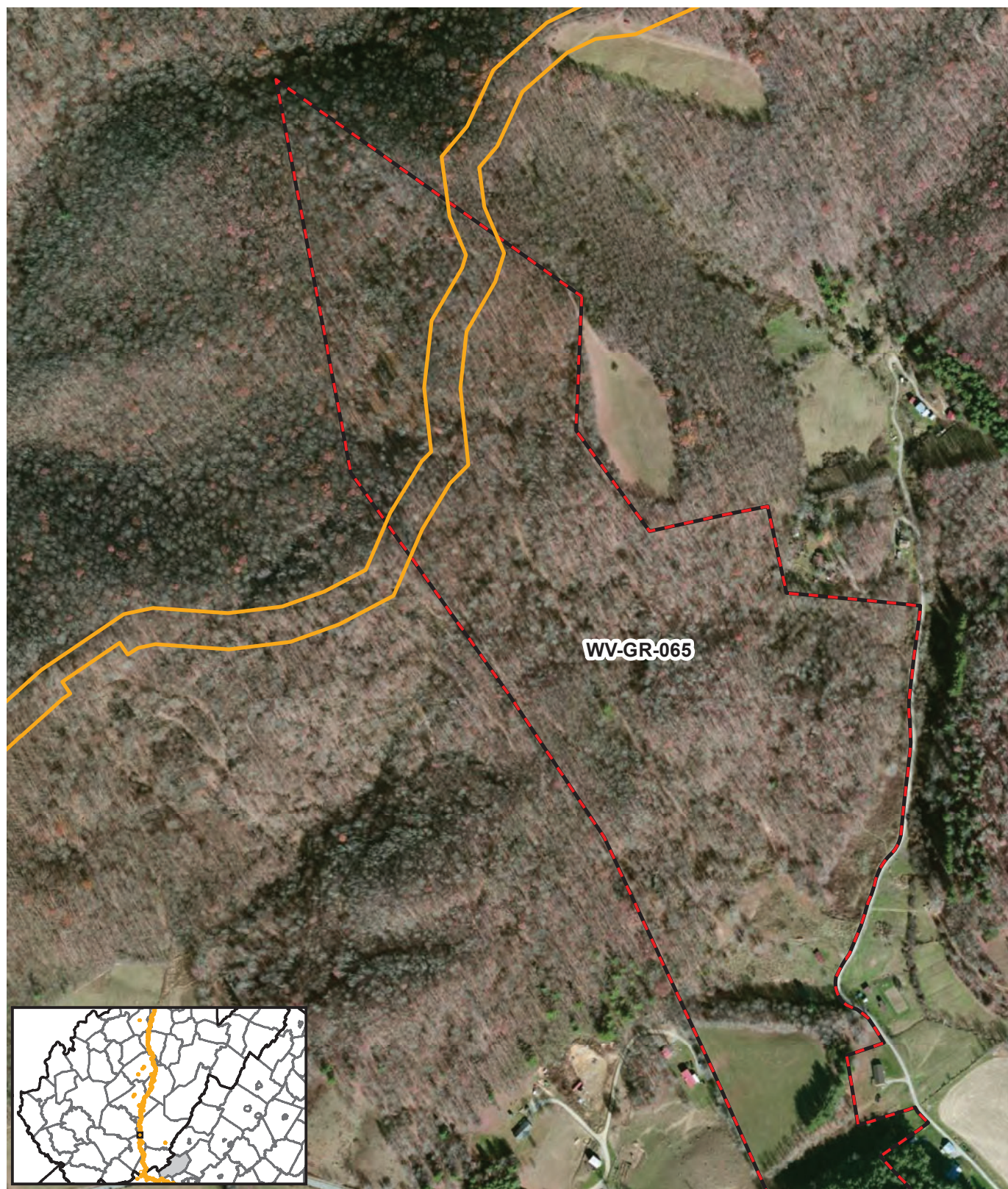
Parcel_Num	County	State	Survey Needed Acre	Surveys Needed
WV-GR-065	Greenbrier	WV	8.076802	small whorled pogonia
WV-SU-046	Summers	WV	3.499243	Virginia spiraea

Can you please clarify which parcel you need information regarding topography?

Thanks,
Megan

Megan Stahl
Permitting Supervisor
625 Liberty Avenue, Suite 1700
Pittsburgh, PA 15222
T 412-553-7783
C 412-737-2587

EQT Where energy meets innovation.
[www Eqt Com](http://www.Eqt.Com)



 MVP Limits of Disturbance  Parcel with Plant Survey remaining

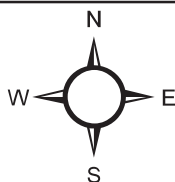


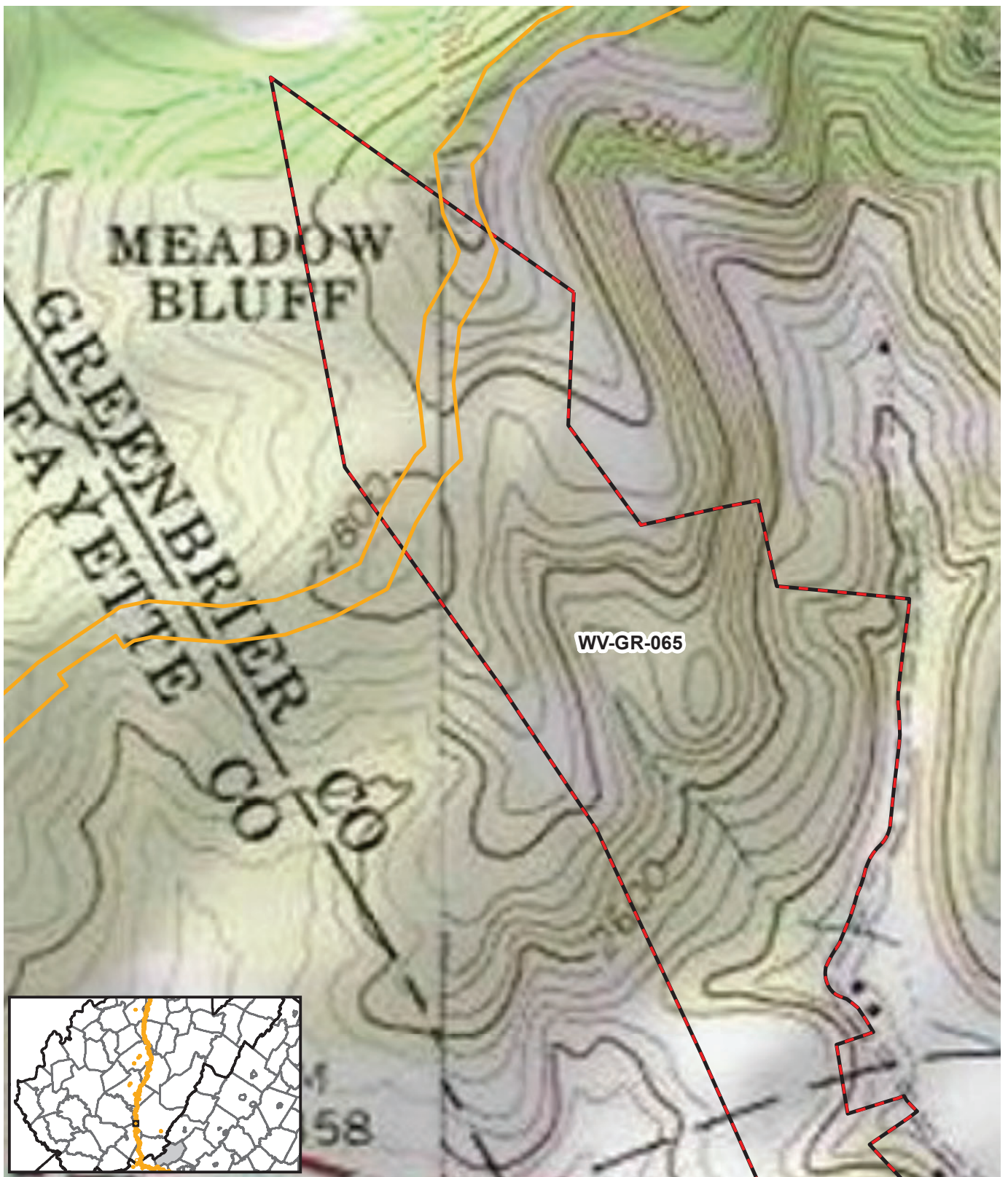
Figure X. Map displaying parcel boundary for needed plant surveys on the Mountain Valley Pipeline Project Virginia and West Virginia.

Project No.
593

Meters
75 0 75 150



ENVIRONMENTAL SOLUTIONS
& INNOVATIONS, INC.



 MVP Limits of Disturbance  Parcel with Plant Survey remaining

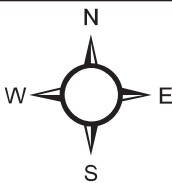
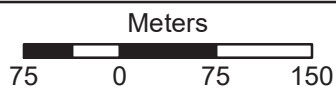
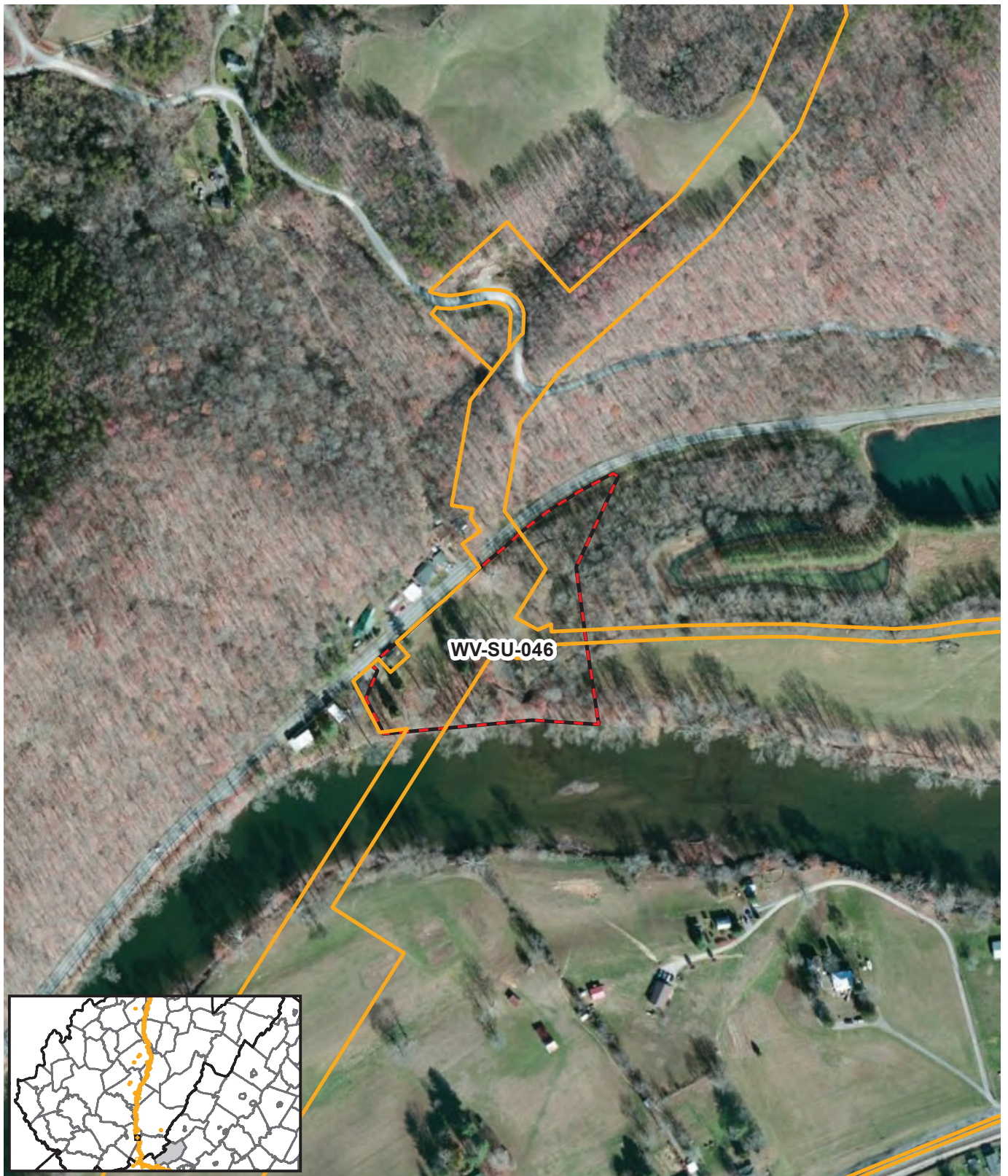


Figure X. Map displaying parcel boundary for needed plant surveys on the Mountain Valley Pipeline Project Virginia and West Virginia.

Project No.
593



ENVIRONMENTAL SOLUTIONS
& INNOVATIONS, INC.



 MVP Limits of Disturbance  Parcel with Plant Survey remaining

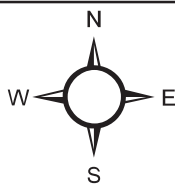
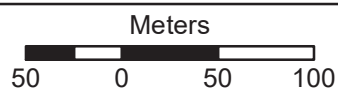
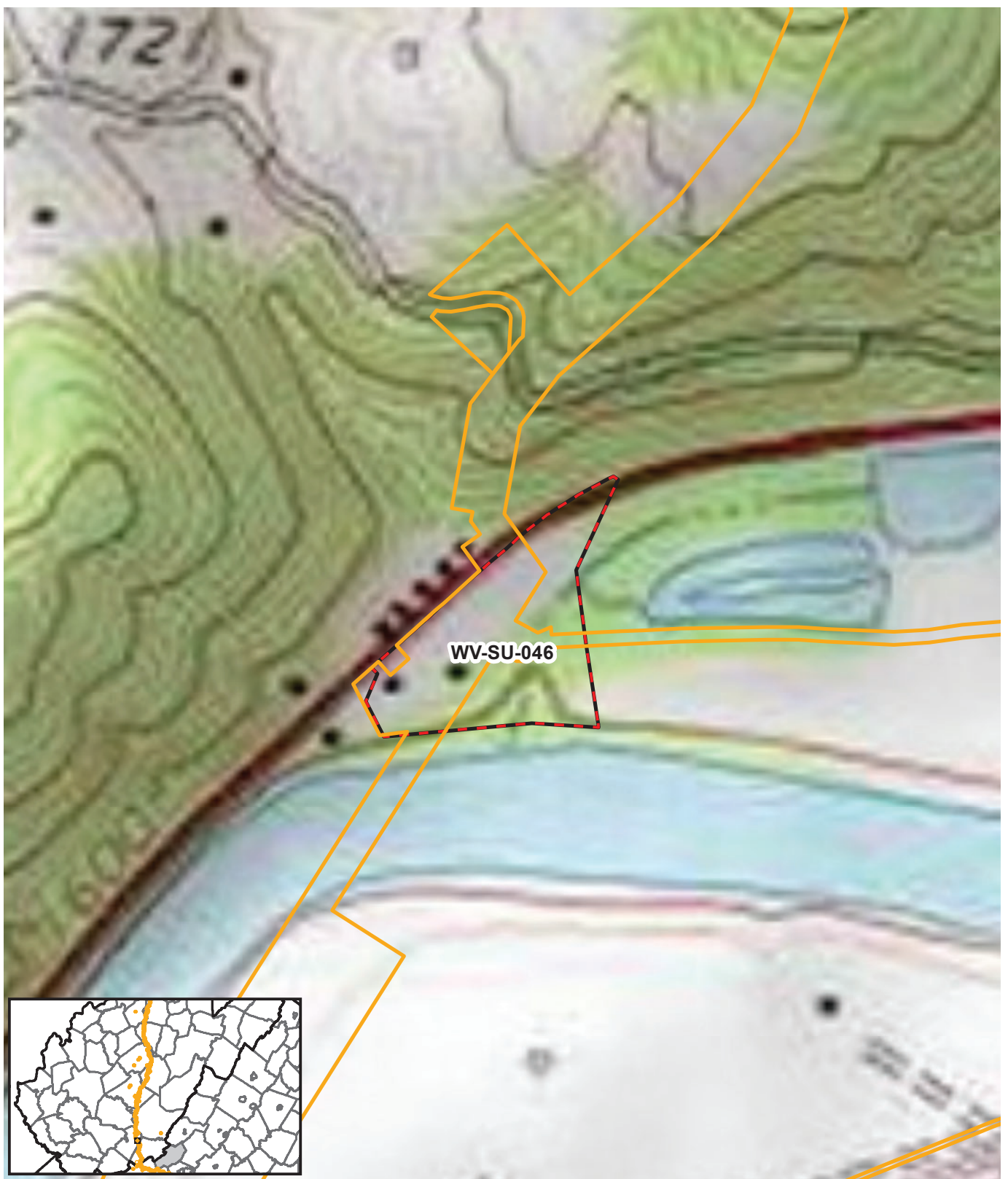


Figure X. Map displaying parcel boundary for needed plant surveys on the Mountain Valley Pipeline Project Virginia and West Virginia.

Project No.
593



ENVIRONMENTAL SOLUTIONS
& INNOVATIONS, INC.



MVP Limits of Disturbance Parcel with Plant Survey remaining

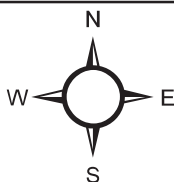


Figure X. Map displaying parcel boundary for needed plant surveys on the Mountain Valley Pipeline Project Virginia and West Virginia.

Project No.
593

Meters
50 0 50 100



ENVIRONMENTAL SOLUTIONS
& INNOVATIONS, INC.