

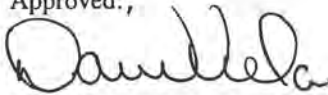
# 2016 Superintendent's Compendium

---

## Grand Teton National Park & John D. Rockefeller, Jr. Memorial Parkway

In accordance with regulations and the delegated authority provided in Title 36, Code of Federal Regulations ("36 CFR"), Chapter 1, Parts 1-7, authorized by Title 16 United States Code, Section 3, the following provisions apply to all lands and waters administered by the National Park Service, within the boundaries of GRAND TETON NATIONAL PARK and JOHN D. ROCKEFELLER, JR. MEMORIAL PARKWAY. Unless otherwise stated, these regulatory provisions apply in addition to the requirements contained in Title 36 CFR, Chapter 1, Parts 1-7.

Approved:



David Vela, Superintendent

5-19-16

Date

PO Drawer 170  
Moose, Wyoming 83012

307-739-3301 (Phone)  
307-739-3618 (Fax)



INDEX PROVIDED AT THE BACK OF THIS DOCUMENT

## TABLE OF CONTENTS

36 CFR Part 1 – General Provisions	3-16
Section 1.2 – Applicability and Scope	3
Section 1.5(a)(1) – Closures and Public Use Limits	3
Visiting Hours	3
Commercial Vehicle Travel Restrictions	3
Drug Free Zones	3
Gyroscopically Controlled Mobility Devices	4
Laurance S. Rockefeller Preserve – Parking & Fishing	4
Vessel Speed	4
Wildlife	4-5
Windsurfing Boards	5
Public Entry Building Closures	5
Public Entry Road Closures	5-7
Public Use Closures	7-13
Section 1.5(a)(2) – Closure and Public Use Limits, designated areas for specific use, activity or condition	13
Bear Spray	13-14
Section 1.6(f) – Compilation of Activities Requiring a Permit	15-16
36 CFR Part 2 – Resource Protection, Public Use and Recreation	16-29
Section 2.1(a)(4) – Designated areas for collection of dead wood on the ground for firewood	16-17
Section 2.1(c)(1) – Collection of certain fruits, berries, nuts	17
Section 2.2(a)(2) – Intentional disturbing of wildlife	17
Section 2.2(b)(4) – Hunting in accordance with Federal law	17
Elk Reduction Program	17
Section 2.2(d) – Transporting lawfully taken wildlife through the park	17
Transporting Taken Wildlife	17
Transporting Taken Wildlife – Retrieval Routes	17-18
Transporting Taken Wildlife – Chronic Wasting Disease	18-19
Section 2.2(e) – Viewing of wildlife with artificial light	19
Section 2.3(d)(2) – Possessing as bait live or dead fish	19
Section 2.10(a) – Designated sites and conditions for camping	19
Designated Camping Areas	19
Permits	19
Annual Camping Limits	19-20
Camping Conditions	20-21
Section 2.10(d) – Food storage	21-22
Section 2.11 – Picnicking	22
Section 2.12(a)(3) – Audio disturbances	22
Section 2.13(a)(1) – Fires, designated areas, receptacles and conditions	22-23
Section 2.14(a)(2) – Sanitation and refuse, using government receptacles	23
Section 2.14(b) – Sanitation and refuse, Superintendent's conditions concerning disposal or carryout	23
Section 2.15 – Pets	23-24
Section 2.16(a) – Horses and pack animals, designated animals	24
Section 2.16(b) – Horses and pack animals, designated trails, routes or areas	24-25
Additional conditions for horse and pack animal use	25-26
Section 2.17(c)(1) – Aircraft and air delivery, downed aircraft removal	26-27
Section 2.20 – Skating, skateboards, and similar devices	27
Section 2.21 – Smoking	28
Section 2.22(a)(2) – Property, areas and conditions designated for longer time periods	28
Section 2.23(c) – Recreation Fees, periods when collection is suspended	28
Section 2.35(a)(3)(i) – Alcoholic beverages and controlled substances, closed areas	28-29
Section 2.38(a) – Explosives, permitted use	29
Section 2.51(e) – Public assemblies, meetings, designated areas	29
36 CFR Part 3 – Boating and Water Use Activities	29-32
Section 3.3 – Vessel Permits	29
Section 3.7(b) – Personal flotation devices, required wearing of	29
Section 3.8(a)(2) – Vessel Operations, designated vessel launching sites	29-31
Section 3.12(a) – Water skiing, designated areas	31
Section 3.12(b) – Towing, parasail, hang-glider or other airborne device	31
Section 3.17(a) – Swimming and wading, designated areas	32
Section 3.18(a) – Snorkeling and underwater diving, designated areas	32
Section 3.19 – Submersibles	32
36 CFR Part 4 – Vehicle and Traffic Safety	32-35
Section 4.10(a) – Travel on park roads and designated routes, off-road vehicle use	32
Section 4.10(c)(1) – Travel on park roads and designated routes, tracked vehicles' designated routes	32
Section 4.11(a) – Load, weight and size limits, established conditions	33
Section 4.21(b) – Speed limits, designated limits	33-34
Section 4.30(a) – Bicycles, designated routes	34-35
Section 4.31 – Hitchhiking	35

## **TITLE 36 CODE OF FEDERAL REGULATIONS**

### **PART 1 - GENERAL PROVISIONS**

#### **§1.2 Applicability and Scope**

- (d) Grizzly Bear Management: The administrative activities conducted by Grand Teton National Park and John D. Rockefeller, Jr. Memorial Parkway or its agents, relative to the management and handling of grizzly bears (*Ursus arctos horribilis*) and their habitat, will be in accordance with the guidelines, procedures, and rules described in the "Grand Teton National Park Bear Management Plan," and "Interagency Grizzly Bear Guidelines," as well as in accordance with U.S. Fish and Wildlife Service permits for handling research and nuisance grizzly bears when the species is listed as threatened or endangered under the Endangered Species Act. When grizzly bears are not listed as threatened or endangered under the Act, management of grizzly bears and their habitat will be in accordance with the Conservation Strategy for the Grizzly Bear in the Greater Yellowstone Area."

#### **§1.5(a)(1) Closures and Public Use Limits**

##### Visiting Hours

- The park and parkway are open to the public 24-hours a-day, 365-days a year unless otherwise publicly posted.
- National Park Service offices, visitor centers and contact stations are open for official business as posted on the respective buildings.

##### Commercial Vehicle Travel Restrictions

- Operations of commercial buses, vans, school buses and vehicles with a GVW in excess of 26,000-pounds must turn off the vehicle engine while loading and unloading passengers or while parked.

*The Superintendent has determined that this use limit is necessary to protect the natural resources within this Class I air shed and allow visitors to experience the area with minimal human induced or created sounds.*

For commercial groups entering the park using the commercial entrance fee:

- Commercial groups shall not construct any structures, fixtures, or improvements in the park area. This includes tents, canopies, or picnic tables, except when occupying a paid campsite.
- Commercial groups are prohibited from conducting tour activities in or from entering areas that could be considered residential in nature to include administrative areas, service areas, employee housing areas, lodging/cabin areas, and campgrounds.
- Tours and interpretive services provided by commercial groups (including but not limited to guide dialog, tour narration and wildlife viewing) are permitted inside the vehicle, on paved roads, and at paved designated turnouts and parking areas only. Tours may not stop on the roadway or the road shoulder.
- Commercial group representatives or guides may not accompany clients on park trails or pathways.

##### Drug Free Zones

- All areas within a radius of 1,000-feet of the Kelly and Moran Elementary schools, the Moose Corner Day-Care Center, Teton Science School, Colter Bay and Moose playgrounds and within 100-feet of the Jackson Lake Lodge swimming pool are designated as *Drug Free Zones*. 21 United States Code, Section 860.

### Gyroscopically Controlled Mobility Devices

- The use of “Segways” and similar gyroscopically controlled devices are considered the same as motorized wheelchairs and may be used (as provided by ADA law) by persons with mobility disabilities. Grand Teton National Park does not currently have any prohibitions concerning motorized wheelchair access. Use of segways outside of ADA law is not permitted. For safety purposes, Segways or similar devices are required to travel at a walking pace in all areas of the park.

*The Superintendent has determined that this designation is in compliance with NPS policy and is a reasonable attempt to make the Park’s programs, facilities and services more accessible to people with mobility disabilities.*

### Laurance S. Rockefeller Preserve – Parking & Fishing

- In accordance with the intent of Laurance S. Rockefeller, and upon the request of his estate, a Reserved Conservation Easement was established to provide for the permanent conservation of the lands that were conveyed to the United States and known as the Laurance S. Rockefeller Preserve. In accordance with the terms and conditions of the Reserved Conservation Easement, held by Jackson Hole Preserve, Inc., the following public limits are established:
  - a. Motor vehicles may not be left unattended along the Moose-Wilson Road where it passes through and is posted within the Laurance S. Rockefeller Preserve.
  - b. Fishing in the pond located between the Laurance S. Rockefeller Preserve Center and the Moose-Wilson Road near the Visitor Center within the Laurance S. Rockefeller Preserve is prohibited.

*The Superintendent has determined that the parking of motor vehicles along the Moose-Wilson Road where it passes through the Preserve would be in conflict with the terms of the conservation easement and the permitting of fishing in the artificial pond near the visitor center would be inconsistent with the serene setting of the Laurance S. Rockefeller Visitor Center.*

### Vessel Speed

- The maximum speed limit for all vessels on lakes open to boating is 45-mph or as otherwise posted by markers and/or as specified in boat permit literature.

*The Superintendent has determined that these restrictions are necessary to promote boating safety, to preserve the environmental and scenic value of the park and to avoid conflicts in visitor use.*

### Wildlife - The following activities are prohibited:

- Willfully approaching, remaining, viewing, or engaging in any activity within 100 yards of bears or wolves, or within 25 yards of any other wildlife including nesting birds; or within any distance that disturbs, displaces, or otherwise interferes with the free unimpeded movement of wildlife, or creates or contributes to a potentially hazardous condition or situation.
- Failure to remove one’s self to prescribed distances during inadvertent, accidental, casual or surprise encounters with wildlife.
- Failure to comply as directed by NPS staff (employees, volunteers or agents) engaged in administering wildlife management operations or managing wildlife viewing opportunities.
- The prohibitions in this paragraph do not apply to persons who are in compliance with written protocol approved by the Superintendent; in accordance with the terms and conditions of a permit from the Superintendent, or park personnel acting within the scope of approved management activities.

*The Superintendent has determined that this limitation on wildlife viewing is necessary for wildlife protection and visitor safety. See section (a)(1) – Public Use Closures for seasonal restrictions on nesting sites that supersede these limits.*

#### Windsurfing Boards

- The use of windsurfing boards is limited to Jackson Lake. Such boards are considered vessels and therefore are required to have a park boat permit.

*The Superintendent has determined that this public use limitation is necessary to prevent conflicting uses on other areas of water within the park and provide access for this type of recreation while ensuring appropriate protection of park view sheds and life/safety. This determination is in accordance with Title 36 CFR Section 7.22 (e)(3) establishing limitations on sailboats on park waterways.*

#### Public Entry Building Closures

- The following National Park Service administrative areas are closed to all public entry unless permission is granted by the Superintendent or their representative:
  - a. Offices within Moose headquarters
  - b. Moose offices, maintenance shops and surrounding parking lots
  - c. Administrative offices within the Craig Thomas Discovery and Visitor Center
  - d. Administrative offices within the Laurance S. Rockefeller Preserve Center
  - e. Beaver Creek offices, maintenance shops and adjacent parking lot
  - f. Jenny Lake Search and Rescue cache (located at Lupine Meadows)
  - g. Administrative offices within the Jenny Lake Visitor Center and Ranger Station
  - h. Taggart meadow equine facilities (identified by signing and grazing area surrounded by wood fencing)
  - i. Chambers Ranch grazing area and buildings
  - j. Signal Mountain Ranger Station
  - k. Administrative offices within the Buffalo Fork Ranger Station
  - l. River patrol equipment caches (located at the former Snake River Land Company headquarters and adjacent to residence #1490 in Moran)
  - m. Colter Bay offices, maintenance shops and adjacent parking lot
  - n. Administrative offices within Colter Bay Visitor Center
  - o. John D. Rockefeller, Jr. Memorial Parkway equipment caches (located behind the Flagg Ranch NPS four-plex, residence #1434)
  - p. All park and parkway water/wastewater well sites, pump houses, cisterns and wastewater lagoons and utilities areas
  - q. All backcountry patrol cabins
  - r. The 4 Lazy F Ranch buildings
  - s. The Blacktail Butte Storage area (aka "Airport Pit"), Kelly Pit and Colter Bay Dry Storage area
  - t. All radio repeater sites
  - u. Teton Interagency Helibase
  - v. Bar BC Ranch historic buildings
  - w. The Brinkerhoff Cabin and outbuildings

*The Superintendent has determined that these closures are necessary to provide government efficiency, ensure accountability of government equipment and provide a safe environment for employees.*

#### Public Entry Road Closures

- The following park and parkway roads and areas have restricted public entry (also see the attached map):

- a. Triangle X Road to the Snake River is open to foot travel only and is closed to all vehicular travel except for authorized vehicles.

*The Superintendent has determined that this closure is necessary for the protection of riparian habitats and risk reduction within the leaseholder's land assignment.*

- b. Roads closed to non-official use: All roads, including service and administrative roads, so designated by signs and/or locked gates, or barricaded with logs and/or boulders. (Foot traffic permitted unless specifically posted otherwise, no dogs or bicycles)

*The Superintendent has determined that this closure is necessary for the protection and preservation of the environmental and scenic values of this area; to protect public health and safety; and to reduce the potential of conflicting recreational uses.*

- c. The Teton Park Road between Cottonwood Creek and Signal Mountain Lodge, including the Jenny Lake Loop, the Moose-Wilson Road between the Death Canyon road intersection and the Granite Canyon Trailhead and Antelope Flats road between the Craighead Hill parking area and the intersection with the East Boundary road are closed when posted on a seasonal basis to vehicular travel.

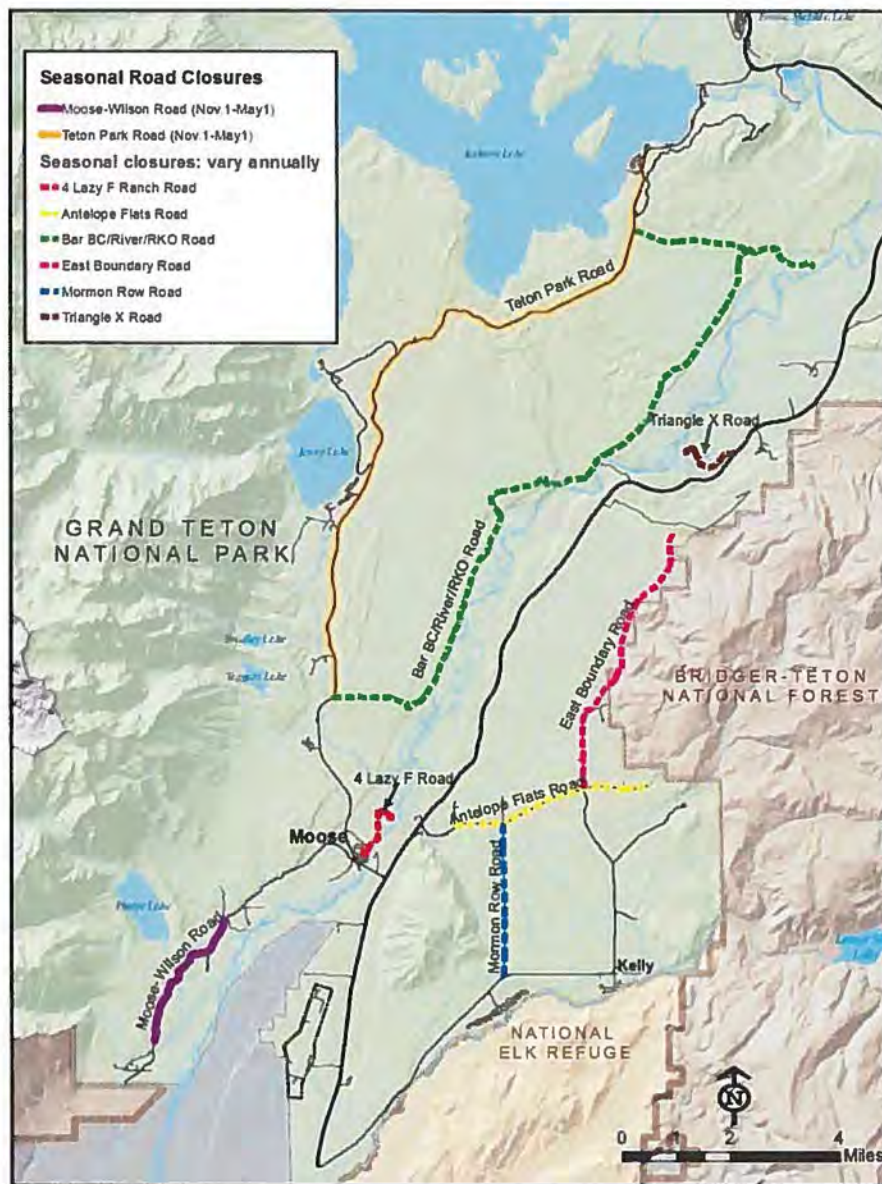
*The Superintendent has determined that this closure/public use limit is necessary for protection of migrating wildlife, maintenance of public health and safety and as an equitable use of park resources.*

- d. When posted or gated in the spring and fall, the RKO / Bar BC / River Road / Mormon Row and East Boundary roads are closed to vehicular travel.

*The Superintendent has determined that these closures are necessary for public safety, maintenance purposes and wildlife protection during the fall elk migration and during the Elk Reduction Program.*

- e. The portion of the Grassy Lake Road within the John D. Rockefeller, Jr. Memorial Parkway from the Flagg Ranch residential intersection to the west boundary of the parkway is closed to all types of motorized vehicles (wheeled, snowmobiles, snowcoaches) from the end of the Yellowstone Winter Use season through May 31<sup>st</sup> (or later as posted due to remaining snow conditions). In the fall, the road is also closed when posted due to mud/snow conditions, through the starting date of the Yellowstone Winter Use season.

*The Superintendent has determined that this closure is necessary to protect critical grizzly bear habitat during the spring within the guidelines for the species recovery and to ensure management's responsibility in reducing road damage.*



#### Public Use Closures

- In the John D. Rockefeller, Jr. Memorial Parkway, the swimming in, bathing in, or entry into a natural, historical or archaeological thermal pool or stream that has waters originating entirely from a thermal spring or pool is prohibited. Swimming, soaking or bathing in adjacent overflow or run-off pools or streams is allowed. Alteration or disturbance of any water course from its natural state by damming, diverting, digging, or by any other means is prohibited for any purpose.

*The Superintendent has determined this closure is necessary to protect sensitive surface manifestations of natural thermal features from damage caused by human activity.*

- Launching, landing, or operating an unmanned aircraft from or on lands and waters administered by the National Park Service within the boundaries of Grand Teton National Park and the John D. Rockefeller, Jr. Memorial Parkway is prohibited except as approved in writing by the Superintendent.

*Definition: Unmanned Aircraft (UA) - The term "unmanned aircraft" means a device that is used or intended to be used for flight in the air without the possibility of direct human intervention from within or on the device, and the associated operational elements and components that are required for the pilot or system operator in command to operate or control the device (such as cameras, sensors, communication links). This term includes all types of devices that meet this definition (e.g., model airplanes, quadcopters, and drones) that are used for any purpose, including for recreation or commerce.*

*The Superintendent has determined that unmanaged or unrestricted recreational use of UAs within Grand Teton National Park will conflict with, or impact, a variety of park uses including visitor experience of unimpaired view sheds; the disturbance, displacement or harassment of park wildlife to include threatened and endangered species, present potential for impacts or damage to sensitive geothermal areas, creation of public safety hazards per operation near roadways or large aggregations of visitors, and visual or aural impacts to wilderness character and values within the park backcountry. Less restrictive measures were not considered sufficient due to the rapidly expanding and evolving use of UAs throughout the world. Section 1.5 of NPS Management Policies 2006 provide that a new form of park use may be allowed within a park only after a determination has been made by the park Superintendent that it will not result in unacceptable impacts on park resources and values.*

- Inner tubes, air mattresses, kick boats, float tubes and similar individual swimming/fishing flotation devices, as a means of conveyance, are prohibited on all streams and rivers within the park and parkway.

*The Superintendent has determined that this restriction is necessary to maintain public safety on the rivers and streams where passages are often clogged with debris posing a hazard to users and park rescuers.*

- The Snake River for 150-feet below the downstream face of the Jackson Lake Dam is closed to fishing, swimming, wading and / or bank use. (Also reference §7.22 for fishing closure)

*The Superintendent has determined that dam operations often create dangerous water hydraulics within this zone making this closure necessary for the protection of life and safety.*

- Posted areas used specifically for the disposal of road-kill wildlife are closed to public entry.

*The Superintendent has determined that such sites create the potential for dangerous human-bear encounters and that these closures are necessary for the protection of life and safety.*

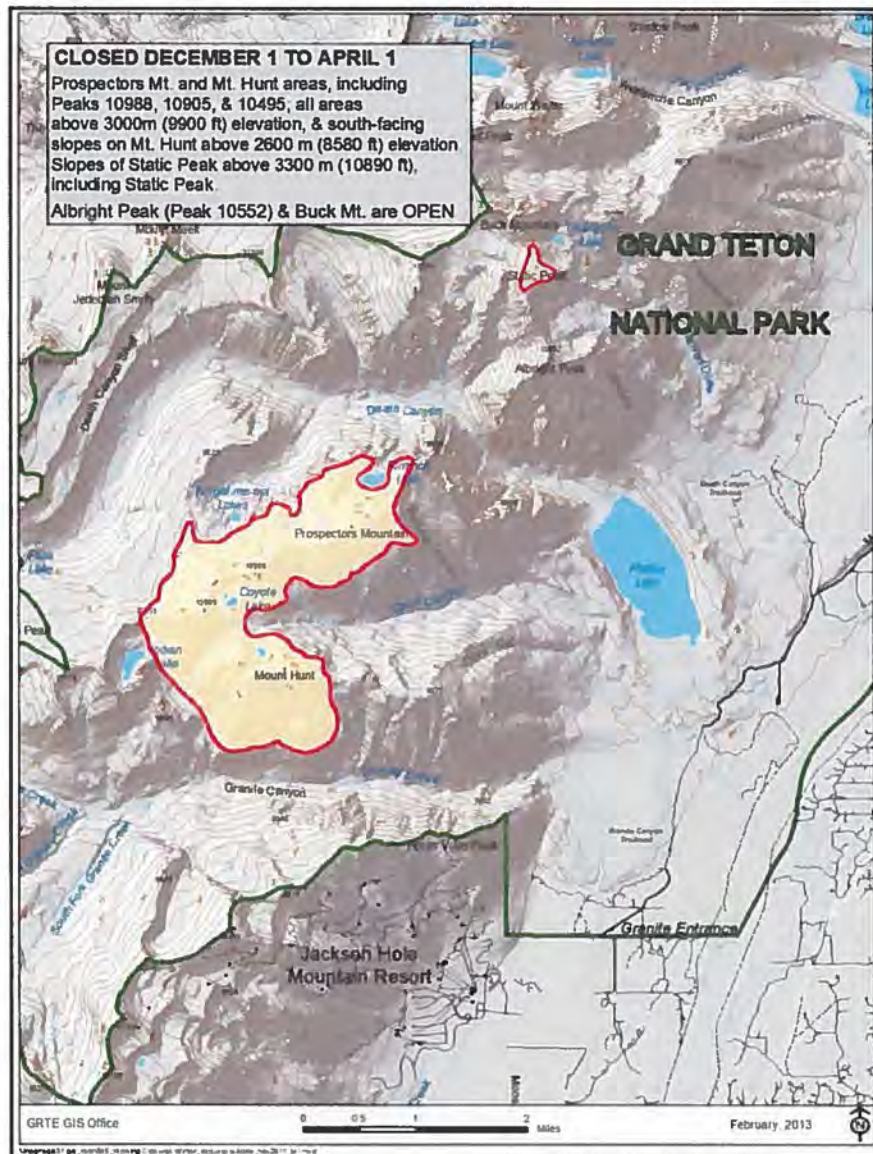
- The area commonly referred to as the dry lakebed portion of Jackson Lake, below the high water mark, north and west of Leeks Marina, to the boundary of the John D. Rockefeller, Jr. Memorial Parkway is closed when and where posted.

*The Superintendent has determined this closure is necessary to protect sensitive resources that may be exposed at low water levels.*

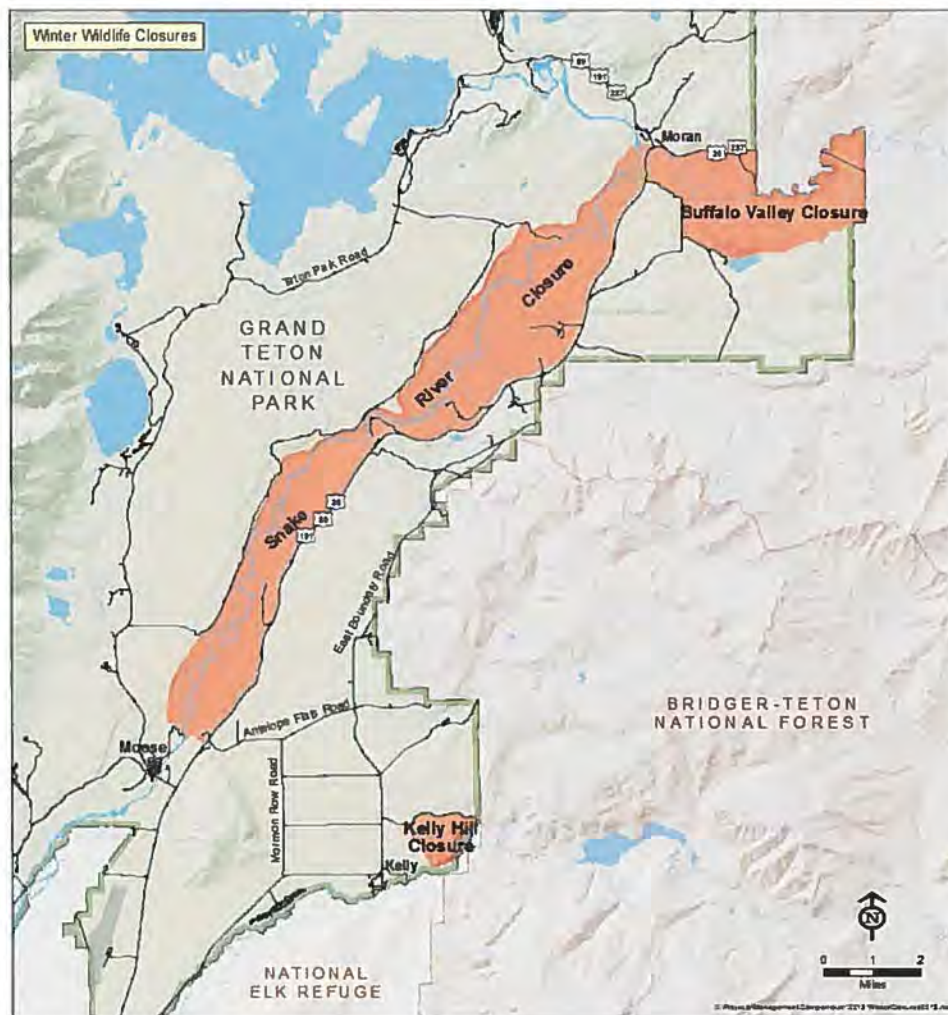
- From December 1<sup>st</sup> to April 1<sup>st</sup> the following areas are closed to all public entry unless authorized by written permit from the Superintendent (see map below).

Teton Range:

- a. Prospector's Mt. and Mt. Hunt, Peaks 10988, 10905 and 10495: and south-facing slopes on Mt. Hunt above 2600m (8580 ft.) elevation.
- b. Slopes of Static Peak above 3300m (10890 ft.), including Static Peak.
- c. The following areas that are contained in the areas above are open:
  - i. Banana Couloir
  - ii. Albright Peak (peak 10552)
  - iii. Buck Mountain



- From December 15<sup>th</sup> to April 1<sup>st</sup> the following areas are closed to all public entry unless authorized by written permit from the Superintendent (see map below).
  - a. The Snake River floodplain, south along Highway 89 from the confluence of the Buffalo Fork at the Moran bridge to Ditch Creek, west along Ditch Creek to the Snake River, then west along the 4-Lazy-F fence line to Cottonwood Creek and north to the River Road, north along the River Road to the RKO Road and then NE along the Snake River to the Buffalo Fork confluence. This closure includes the Snake River itself.
  - b. The Buffalo Fork River floodplain and the Uhl Hill area defined as the following: starting section 21 (T45N, R113W) where the park boundary intersects the Buffalo Fork, then south along the park boundary to the intersection with the Elk Ranch Reservoir Road, then westerly along the Elk Ranch Reservoir Road to Highway 26, then north and east along Highway 26 to the park boundary in section 30 (T114W, R45N), then south, east, and northeast along the park boundary to the starting point.
  - c. The Kelly Hill area (portions of Sections 1 and 2 in T42N, R115W.)



*The Superintendent has determined that these closures are necessary for protection of wintering wildlife including moose, elk, bighorn sheep and waterfowl during critical wintering or nesting periods.*

- From February 1<sup>st</sup> to August 15<sup>th</sup> annually, lands within ½ mile (or as otherwise posted) of bald eagle nests are closed when posted to all public entry.

*The Superintendent has determined that this closure is necessary to protect nesting bald eagles, and be consistent with management direction in the Greater Yellowstone Bald Eagle Management Plan (1995) and raptor management guidelines issued by the US Fish and Wildlife Wyoming state office in May 2007 to protect nesting bald eagles. Should eaglets at active nests fledge earlier than August 15<sup>th</sup> timeframe, closures may be lifted by the removal of posted signs.*

- From April 1<sup>st</sup> to September 1<sup>st</sup> annually, all lands within ¼ mile (or as otherwise posted) of nesting sites of osprey, trumpeter swans, peregrine falcons, great blue herons and Canada geese are closed when posted to all public entry.

*The Superintendent has determined that this closure is necessary for the protection of bird species during the sensitive nesting period; and that a ¼ mile distance is reasonable considering U.S. Fish and Wildlife Service guidance. Should documentation of fledging earlier than September 1<sup>st</sup> exist, closures may be lifted by the removal of posted signs.*

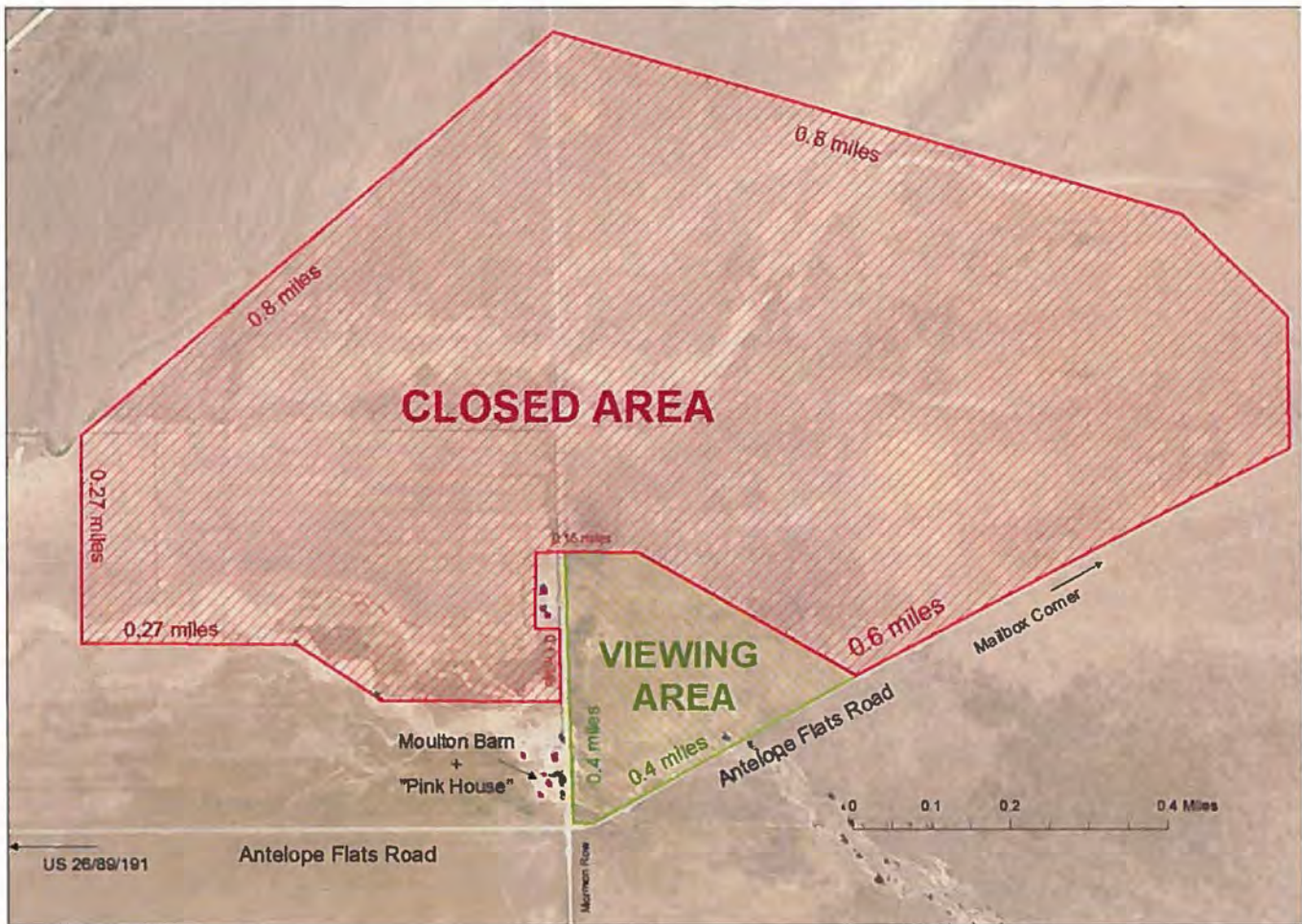
- When posted, lands up to a 1-mile radius of wolf dens or as identified on posted maps, are closed to all public entry.

*The Superintendent has determined that this closure is to prevent human disturbance that could lead to wolves abandoning their den site.*

- When necessary for the proper management of the Jackson elk herd, the Park and Wyoming Game and Fish may authorize an elk reduction program within the park. Between the beginning and ending dates (normally between October and December) of that Elk Reduction Program, the following areas will be closed to public entry: as published in the Wyoming Game and Fish Commission regulations.
  - a. An area ¼ mile wide along the north side of the Gros Ventre – Kelly road from the Mormon Row road easterly to the town of Kelly is closed to all public entry.

*The Superintendent has determined that these closures are necessary for safety during the Elk Reduction Program, wildlife corridors, and to facilitate regulation of the reduction program.*

- From March 15<sup>th</sup> to May 15<sup>th</sup> annually, the area commonly referred to as North Mormon Row is closed to public entry as described by the following boundaries and /or as posted in the field. Beginning at the fence remnant on the Old Mormon Row Road, north of the second (north most) cluster of structures in the John Moulton Barn/Pink House complex. The area immediately surrounding these buildings (about 20 yards behind the structures) will remain open to enable visitors to explore and photograph the structures. The closure extends 50 yards W from the fence remnant into the meadow, to reference point 526993/4835303 (NAD83; about 75 yards N and 25 yards W of the NW corner of the north most building). The closure continues 170 yards due S to 526992/4835150, then 50 yards E back to the road edge at 527041/4835149, enclosing the visitation buffer around the buildings. The closure extends 0.1 mile S along the road edge to 526680/483500. The southern extent of the closure is marked by the closer of the two large, prominent cottonwood trees in the meadow behind the buildings, and the closure continues from the road edge, due W 0.23 miles to this tree at 526680/4835000. The boundary continues NW 0.12 miles to the second of the two cottonwood trees at 526510/4835114, and follows due W from this tree 0.27 miles to 526070/4835114. This boundary is a little more than ¾ of the way between the employee housing units and the Pink House/John Moulton barn. The closure travels N 0.26 miles to 526068/4835540, where the meadow hits the sagebrush. Continuing 0.8 miles NW, the closure's apex is positioned over the carcass dump road at 527039/4836359. The boundary extends another 0.8 miles S/SE to 528309/4835991, 0.2 miles SE to 528525/4835779, and then 0.16 miles due S to meet the road edge of Antelope Flats Road at 528530/4835514. These two vertexes in the sagebrush are somewhat nondescript, but will be well signed and are necessary to protect a core area of the grouse lek. The closure will continue W/SW along the road edge back towards the pink house for 0.6 miles until it meets the boundary of the viewing area at 527646/4835049. The boundary extends NW along the viewing area edge for 0.3 miles to 527203/4835303, and ends 172 yards to the west back at the fence remnant on the Old Mormon Row Road. The entirety of the closure will be well signed with location-specific "you are here" maps and information sheets. Between Antelope Flats Road and the closure's southern boundary (approximately ½ mile from Antelope Flats Road) will be considered an appropriate viewing area (see map next page).



*The Superintendent has determined that this closure is necessary for the protection of sage grouse and the preservation of wildlife habitat.*

- The area known as Willow Flats is closed to public entry from May 15<sup>th</sup> to July 15<sup>th</sup> or when posted. This area is described as being the willows, springs and aquatic systems encompassed by the following landmark/boundary lines beginning at the Willow Flats Overlook: south on the North Park Road to the Jackson Lake intersection, then west on Teton Park Road to the Jackson Lake Dam, then northwest along the high water line of the Jackson Lake to Third Creek, then north along Third Creek to the abandoned Third Creek Bridge site, northeast on the old Third Creek trail to the GTLC cook site road and southeast along the Wagon Road to the Willow Flats Overlook. This closure includes the Wagon Road from the Jackson Lake Lodge to the cook site road junction.
- In addition, the signed section of the Teton Park Road (TPR) between Jackson Lake Dam and Jackson Lake Junction with dense vegetation along the road is closed to all stopping, standing, and parking. This is a year-round closure.



*The Willow Flats habitat is considered by park biologists to be one of the densest elk calving grounds in Grand Teton National Park. The prevalence of elk calves attracts a number of predator species including black and grizzly bears, wolves, coyotes, and raptors. The Superintendent has determined that this closure is necessary for the natural behavior of these species during a critical time of feeding, and to provide a safe wildlife road crossing corridor.*

#### **§1.5(a)(2) Closure and Public Use Limits, designated areas for specific use or activity or condition**

##### **Bear Spray**

- Bear spray may be carried by individuals for the purpose of protecting one's self or others when travelling in bear habitat. It should not be applied to people, tents, packs or other equipment or surrounding area as a repellent or used as aversive conditioning for wildlife. (Bear Spray – Also known as bear deterrent or bear repellent is a chemical formula designed specifically to deter aggressive or attacking bears. It should be an

Environmental Protection Agency registered, commercially manufactured product, labeled as “Bear Spray”, should contain 1% to 2% of the active ingredients capsaicin and related capsaicinoids and have a minimum can size of 7.9oz or 225 grams.) Note: bear spray should not have exceeded its expiration date.

*The Superintendent has determined that this definition and permission is appropriate as grizzly and black bear populations continue to thrive throughout the park and parkway. Research indicates that bear spray is an effective non-lethal means of deterring human-bear encounters.*

Areas established for public assembly and/or demonstration and designated on a map in the Superintendent’s Office (see also map below) are managed under regulations within Title 36 CFR, Sections 2.51, 2.52 and the respective section of this document.



“Kite-skiing” is an approved activity only on the frozen surface of Jackson Lake.

Access for snowmobile use on the frozen surface of Jackson Lake is limited to the Colter Bay swim beach parking area.

*The Superintendent has determined that these areas are suitable for the particular activity involved and appropriate for public access.*

## **§1.6(f) Compilation of Activities Requiring a Permit**

The following is a compilation of those activities for which a permit from the Superintendent is required:

### Aircraft and Air Delivery

- Delivery or retrieval of a person or object by parachute, helicopter or other airborne means. §2.17 (a)(3)
- Removal of a downed aircraft. §2.17 (c)(1)

### Audio Disturbances

- Operating a chainsaw outside designated NPS administrative sites or concession land assignments. §2.12 (a)(2)
- Operation of any type of portable motor or engine, or device powered by a portable motor or engine in non-developed areas. §2.12 (a) (3)

### Boating

- Boating. §3.3

### Camping

- Camping includes auto, backcountry, and group camping (except Grassy Lake Road campsites #1-8). §2.10 (a)

### Campfires

- Campfires on the shorelines of Jackson Lake. §2.13 (a)(1)

### Commercial Activity

- Commercial notices or advertisements. §5.1
- Commercial photography when utilizing props, models, or support crew. §5.5
- Commercial vehicles (except when making direct deliveries to NPS, concession, or private property in-holdings, or when traveling through Grand Teton National Park on Hwy 89/26/191/287, commonly referred to as the "outside highway"). §5.6

### Elk Reduction Program

- Participation in the Elk Reduction Program. §7.22 (f)

### Grazing

- Grazing and driving cattle, horses or any stock animal. §2.60 (b)

### Printed Matter Sale or Distribution

- Sale or distribution of printed matter with more than 25 participants. §2.51 (a)

### Public Events with 25+ Participants

- Public assemblies, meetings, gatherings, demonstrations, or parades with more than 25 participants. §2.51 (a)

### Recovery of Sunken Vessels

- Recovery of sunken vessels. §3.14

### Refuse

- Use of government refuse receptacles or other refuse facilities for dumping household, commercial or industrial refuse brought as such from private or municipal property. §2.14 (a)(2)

### Residing

- Residing on federal lands. §2.61 (a)

### Scattering Ashes

- Scattering ashes from human cremation. §2.62

### Special Events

- Special Events. §2.50 (a)

### Specimen Collection

- Specimen Collection (taking plant, fish, wildlife, rocks or minerals). §2.5 (a)

### Towing

- Towing a person using a parasail, hang-glider or other airborne device. §3.12

### Vehicle Limits

- Exceeding of established vehicle load, weight, and size limits. §4.11 (a)

### Weapons

- Carrying or possessing a weapon (excluding legal firearms), trap or net. §2.4 (d)

## **PART 2 - RESOURCE PROTECTION, PUBLIC USE AND RECREATION**

### **§2.1(a)(4) Designated areas for collection of dead wood on the ground for firewood**

- Gathering dead and down wood for use within the park and the parkway is permitted solely for having open fires within designated fire rings that are provided at campgrounds and picnic areas; and for campfires on the Jackson Lake shoreline when a permit is issued. Such wood cannot be removed from the park or the parkway.

*The Superintendent has determined that the gathering of dead wood is an equitable use of park resources, may reduce fuel loading around developed zones, and will have no significant long-term impact on the park's natural value.*

#### **§2.1(c)(1) Collection of certain fruits, berries, nuts**

- Edible fruits, berries, and nuts may be gathered by hand for personal use and consumption. The allowable limit is one quart / per species / per person / per day. The use of bush rakes or other harvesting devices is prohibited. The collection of mushrooms is prohibited.

*The Superintendent has determined that the collection and consumption of specified vegetation for immediate personal consumption is a reasonable and traditional use of park resources and will have no significant long-term impact on the park's natural value.*

#### **§2.2(a)(2) Intentional disturbing of wildlife**

- The use and/or possession of elk bugles, varmint calls, audio attractants or other artificial means or natural methods (including rattling antlers, verbal bugling imitations, or wolf howling) of attracting or disturbing wildlife is prohibited. (a)(2)

*The Superintendent has determined that the prohibition for the use of such devices or related behavior is necessary for the protection of wildlife.*

#### **§2.2(b)(4) Hunting in accordance with Federal law**

##### Elk Reduction Program

- Hunting of elk in Grand Teton National Park is allowed under conditions set by Public Law 81-787 (Commonly referred to as the "Elk Reduction Program"). This activity is managed through a park permitting process as authorized by Title 36 CFR §1.6(a) and §1.6(e).
- Hunting of elk and other species within hunting seasons established by the State of Wyoming in the John D. Rockefeller, Jr. Memorial Parkway is allowed under Public Law 92-404. (b)(1)

*These activities are set forth within the United States Code as codified in Public Law. The Superintendent has determined that permitting the Elk Reduction Program, as reviewed and determined necessary annually, is necessary to achieving long term management goals for the Grand Teton segment of the Jackson elk herd as well as other herd segments.*

#### **§2.2(d) Transporting lawfully taken wildlife through the park**

##### Transporting Taken Wildlife

- Legally taken wildlife or portions thereof may be transported through the park, within or on a motor vehicle, via a direct route with no unnecessary stops or diversions, when no reasonable non-park alternative route is available. Individuals traveling north through either the Moose or Moran entrance stations are required to declare wildlife or portions thereof taken outside the park when entering through the first entrance station contacted. Such wildlife must be marked with a valid state tag.

##### Transporting Taken Wildlife – Retrieval Routes

- Individuals possessing valid Wyoming hunting licenses for hunt areas adjacent to the park and parkway may transport legally harvested wildlife that is marked with a validated state tag on the following designated routes only from U.S. Forest Service lands through the park.
  - a. Arizona Creek Trail, from the trailhead at Hwy. 89, approximately two miles, to the U.S. Forest Service/National Park Service boundary.
  - b. Arizona Lake Trail, from the trailhead off Hwy. 89, approximately one mile, to the U.S. Forest Service/National Park Service boundary.
  - c. Pilgrim Creek Trail, from the end of Pilgrim Creek road, along Pilgrim Creek approximately one mile, to the U.S. Forest Service/National Park Service boundary.
  - d. The trail between Jackass Pass and Carrot Knoll.
  - e. The trail between Moose Creek and the park boundary north of Marion Lake.
  - f. By vessel, from the Snake River at the John D. Rockefeller, Jr. Memorial Parkway boundary directly to disembark at Lizard Creek Campground of Mud Flats Turnout.
  - g. Hunter Barn area, from the Hunter Barn gate following a marked northeasterly path to the U.S. Forest Service/National Park Service boundary.



*The Superintendent has determined that these use limits are necessary to effectively protect park resources, provide public safety, and to avoid conflicts in visitor use while meeting the enabling legislation. The Superintendent has also determined that individuals with a government issued identification and valid legal Wyoming hunting license do not need a further permit for these activities.*

#### Transporting Taken Wildlife – Chronic Wasting Disease

- The transport of heads and spinal cords from deer, elk, or moose through a park entrance station into the park by the public is prohibited. The following portions of a carcass may be transported after declaration at an entrance station:
  - a. Meat that is cut and wrapped either commercially or privately.
  - b. Quarters or other portions of meat with no part of the spinal column or head attached.
  - c. Meat that has been boned out.
  - d. Hides with no heads attached.

- e. Clean (no meat or tissue attached) skull plates with antlers attached.
  - f. Antlers with no meat or tissue attached.
  - g. Upper canine teeth, also known as “buglers”, “whistlers”, or “ivories”.
  - h. Finished taxidermy heads.
- Persons with a primary residence within the park boundaries may only bring legally harvested deer, elk or moose carcasses into the park consistent with Wyoming Game and Fish provisions for chronic wasting disease (CWD) mitigation and management.

*The Superintendent has determined the adoption of these guidelines is necessary for protection of park wildlife and within guidelines established by the State of Wyoming. This regulation does not apply to park elk that are taken under a permit issued by the superintendent in conjunction for the Elk Reduction Program.*

#### **§2.2(e) Viewing of wildlife with artificial light**

- Viewing of wildlife with any type of artificial light is prohibited in the park and the parkway. This prohibition conforms to Wyoming State Law (W.S. 23-3-306).

*The Superintendent has determined that prohibiting the use of such devices is necessary for the protection of wildlife.*

#### **§2.3(d)(2) Possessing as bait live or dead fish**

- Identified species of dead, non-game fish may be used as bait in Jackson Lake as specified within Section 7.22 (b)(3) (d)(2)

*No authorizations have been issued by the Superintendent for bait dealers or the removal of bait fish for commercial sales.*

#### **§2.10(a) Designated sites and conditions for camping**

Permits and conditions for camping are established as follows:

##### Designated Camping Areas

- All concession-operated campgrounds.
- Jackson Lakeshore campsites including Spalding Bay.
- The parking lot adjacent to the Colter Bay Visitor Center – December 1<sup>st</sup> to April 15<sup>th</sup>.
- Pilgrim and Pacific Creek hunt camps (Open only for the elk reduction program and is reserved for hunters with a valid park hunt permit).
- Grassy Lake Road primitive campsites (#1-8).

##### Permits

- A permit is required for all backcountry camping in Grand Teton National Park and the John D. Rockefeller, Jr. Memorial Parkway including the Grassy Lake Road designated primitive campsites.

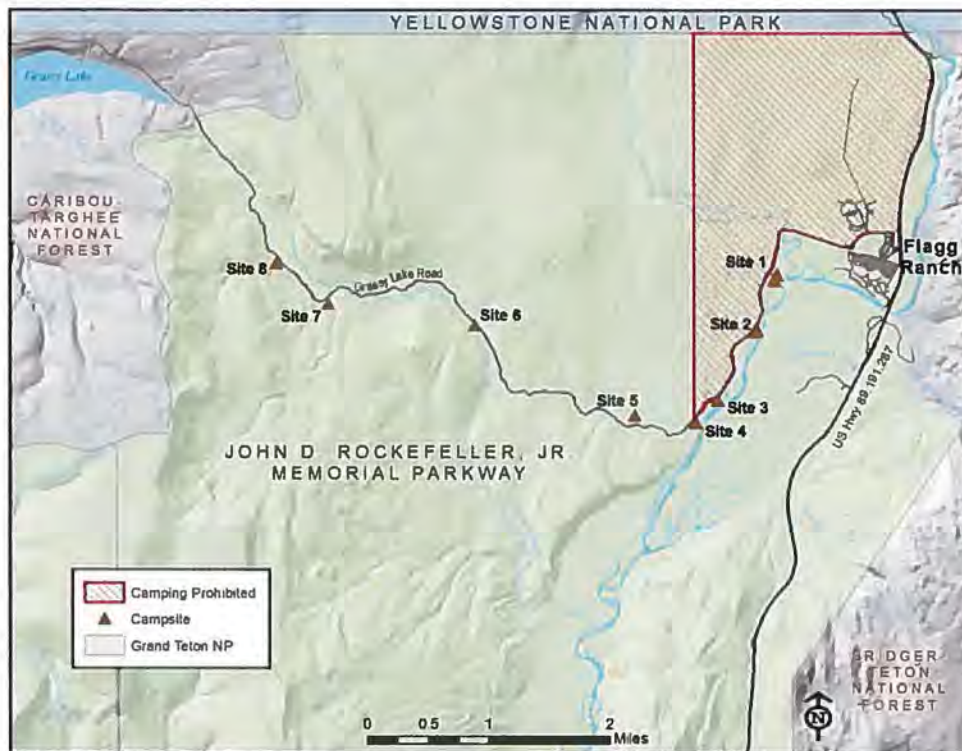
##### Annual Camping Limits:

- Concession – operated campgrounds (except Jenny Lake) – 30 nights per – year (36 CFR 7.22 (d)(1))
  - a. Lizard Creek Campground

- b. Colter Bay Campground
  - c. Signal Mountain Campground
  - d. Gros Ventre Campground
- Jenny Lake Campground (concession operated) – 10 nights per year (36 CFR 7.22 (d)(1))
- Colter Bay winter camping – 30 nights per year (no open fires may be kindled on the ground) (36 CFR 7.22 (d)(1))
- Grassy Lake Road primitive campsites – no person, party or organization shall occupy a campsite for more than 14 consecutive nights, or for more than 30 nights in a calendar year
- In backcountry areas including Jackson Lake, no person or private group shall camp more than 10 nights between June 1<sup>st</sup> and Labor Day, or more than 30 nights per year
- Pilgrim and Pacific Creek hunt camps – no person or party shall occupy a hunt camp more than 30 nights

Camping Conditions:

- A maximum of two vehicles per site, when space is available, and a maximum of two tents per campsite are allowed with a camping permit, if a tent pad is available, tents must be placed within the confines of the pad.
- Individuals with a rented boat slip where shore power is available at the Colter Bay marina are considered to have a camping permit and may overnight on their vessel in the marina no more than thirty (30) nights in the boating season. (Friday of Memorial Day weekend to Monday of Labor Day weekend).
- Pilgrim and Pacific Creek temporary camps (Elk Reduction Program)
  - a. Temporary camping areas are designated and established specifically for the purpose of assisting individuals participating in the Grand Teton National Park Elk Reduction Program. Each camping group must have at least one hunter with a valid park hunt permit.
  - b. These temporary camping areas shall be open for camping only for the period beginning 48-hours prior to the opening of the elk reduction program in Grand Teton National Park and shall be closed to camping 24 hours after the last day of said season.
  - c. Backcountry camping in the John D. Rockefeller, Jr. Memorial Parkway is prohibited within the following area: Beginning at the junction of Highway 89 and the Grassy Lake Road; westerly along Grassy Lake Road to Campsite # 4; northerly to the Yellowstone boundary; easterly along the Yellowstone boundary to Highway 89; southerly along Highway 89 to the junction of Grassy Lake Road (see map below).



- d. It is prohibited to operate motorized equipment, machinery or generator in any developed or primitive campsite, or while anchored on Jackson Lake between the hours of 8:00pm and 8:00am.

*The Superintendent has determined that permits for, and restrictions upon, specified camping areas are necessary for the maintenance of public health and safety, for the protection and preservation of the environmental and scenic values of the areas, and as equitable uses of park resources. For additional permit information and availability, please visit [www.recreation.gov](http://www.recreation.gov).*

#### **§2.10(d) Food Storage**

- For the purpose of the following food storage regulations, the word “food” includes the following: all food (regardless of packaging), all beverages (including alcoholic beverages), garbage, and pet food. Additionally, equipment used to cook or store food includes the following: cooking utensils, pots/pans/plates, stoves, grills, empty or full coolers, storage containers with food or that had previously contained food (except approved bear resistant canisters), beverage containers, and pet food bowls. Water stored in its original packaging is excluded from the following restrictions.
- In developed camping, picnic, Jackson Lake lakeshore campsites, lodging, residential, trailhead and day-use front country areas all food, lawfully taken fish or wildlife, garbage, and equipment used to cook or store food must be attended at all times, stored inside bear resistant food storage lockers, or inside a hard sided vehicle with doors locked and windows closed. Pop-up trailers with canvas sides are not considered hard sided vehicles. Interagency Grizzly Bear Committee (IGBC) approved bear resistant canisters, panniers, or coolers are not approved for use as stand-alone food storage in front country areas, where food must be stored as previously described.
- All individuals / parties camping in the backcountry (more than 250-yards from developed zones) are required to store all unattended food, lawfully taken fish or wildlife, and garbage in Interagency Grizzly Bear Committee (IGBC) approved portable bear resistant food storage canisters. Alternatively, campers in

primitive lakeshore campsites (located along Leigh, Trapper, Bearpaw, Phelps and Surprise Lakes) as well as The Platforms, Meadows, Petzoldt Caves and Lower Saddle camp zones in Garnet Canyon may use existing bear food storage lockers. Equipment used to cook or store food (including pots, pans, dishes, utensils, etc.) that is not able to be stored in bear resistant food storage canisters must be completely clean and free of any food residue.

- Backpacks and/or daypacks containing unsecured food, lawfully taken fish or wildlife, garbage, and dirty / soiled equipment used to cook or store food (i.e. not in a canister) may not be left unattended.

*The Superintendent has determined that the above public-use restrictions are necessary and appropriate to protect a variety of wildlife within the park and to provide consistency for the protection of wildlife throughout the Greater Yellowstone ecosystem.*

## **§2.11 Picnicking**

- Public picnicking is permitted anywhere in the park and the parkway except within concession operated campgrounds or concession facilities where tables are provided as part of food service operations; or in government residential, maintenance, service and utility areas.

*The Superintendent has determined that picnicking is an equitable allocation and use of park resources with the above limitations to protect government resources and private property.*

## **§2.12(a)(3) Audio disturbances**

- Power augers are permitted to be used on the frozen surface of Jackson Lake and Jenny Lake from 6:00 a.m. to 6:00 p.m. when used in conjunction with a valid fishing permit. (a)(3)

*The Superintendent has determined that the possession of a valid Wyoming fishing license constitutes a permit for the use of power augers on Jackson Lake during the winter season.*

## **§2.13(a)(1) Fires, designated areas, receptacles and conditions**

Fires are permitted as follows:

- Within the confines of NPS-designated and installed fire rings and/or grills at following locations within the park and parkway:
  - a. Gros Ventre, Jenny Lake, Signal Mountain, Colter Bay, Lizard Creek, Flagg Ranch Resort campgrounds and Grassy Lake Road primitive campsites.
  - b. Campsites on Leigh, Bearpaw, Trapper and Jackson lakes for which a backcountry permit has been obtained.
  - c. Temporary campsites at Pacific Creek and Pilgrim Creek only when open during the elk reduction program.
  - d. Designated picnic areas located at String Lake, Signal Mountain, Catholic Bay, Colter Bay, 'Sergeant's Bay, Two Ocean Lake, and Jackson Lake overlook.
  - e. Other locations as described in park-approved concession contracts.
- With a written permit (obtained at the Colter Bay Visitor Center), fires are permitted along the Jackson Lake west shoreline when high water is below 7,000-feet in elevation from the Snake River inflow south to Moran Creek.

- Open campfires burning wood, not charcoal, are permitted on the frozen surface of Jackson Lake. All debris other than ashes and charred wood must be removed.
- Within National Park Service and concession residential areas in NPS-designated and installed fire rings. Each residential unit is limited to a single designated fire ring.

*The Superintendent has determined that allowing fires in designated areas is an appropriate activity that is a tradition within the park with benefits for the visitors, and has no detrimental effects to the natural resources set aside for protection.*

#### **§2.14(a)(2) Sanitation and refuse, using government receptacles**

- At the Superintendent's discretion, a written fee permit may be granted if the park facility manager determines that the applicant's property and access roadway for their residence is inaccessible to reasonable types of trash/refuse removal by either private or public means due to remoteness and/or weather conditions; or for contractors, concessioners if such use is consistent with the terms and conditions of their work within the park or is in the interest of the management of the park or parkway.

#### **§2.14(b) Sanitation and refuse, Superintendent's conditions concerning disposal or carryout**

- All overnight users of Jackson Lake campsites, except those permitted at Spalding Bay, are required to have and use a portable toilet system that will remove human waste to a sanitary dump station or is EPA-approved for disposal in landfills.
- In Garnet Canyon, all human waste must be packed out from the Lower Saddle camp area (between Middle and Grand Teton peaks) and Corbet's High Camp (Teepee Glacier terminal moraine), and The Caves camping area, in EPA-approved methods for disposal in landfills (WAG bags, Rest Stop II bags, and other approved human waste bags may be deposited in a park trash receptacle at the trailhead or other appropriate location).

*The Superintendent has determined that these restrictions and/or permits are necessary for the implementation of management responsibilities, protection of the environmental and scenic values of the park; and compliance with EPA guidelines.*

#### **§2.15 Pets**

- Pets are *permitted* in the park and parkway, per the conditions within Title 36 CFR in the following areas:
  - a. Within 30' of roads and roadways open to vehicle traffic, launch ramps or parking areas which are open to public use.
  - b. Within established campgrounds and picnic areas (including Spalding Bay and Grassy Lake primitive campsites) except where posted
  - c. Unless posted otherwise; on maintained paved trails, and campground trails. Pets are not permitted on the paved multi-use pathway.
  - d. On any permitted vessel while on Jackson Lake but not in lakeshore campsites, in lake waters, or on lands not within areas specified under (a) in this section
  - e. During winter, all snow covered, unplowed roadways are closed to pets with the exception of the groomed sections of the Teton Park road, Grassy Lake road, Colter Bay campground, the 4 Lazy F road from Moose housing to the ranch gate, East Boundary Road (Shadow Mountain winter parking lot to the Forest Service boundary), and the unplowed section of the Moose-Wilson road.

- f. During the spring and fall seasons, when the Teton Park Road and the Moose/ Wilson Road are clear or plowed of snow but closed to vehicle traffic, pets on leash are allowed on the roadway.
- Pets may not be left unattended in areas or in circumstances that they will create a nuisance to other visitors or cause a conflict with wildlife. They may be left within the enclosed portions of vehicles with appropriate ventilation, water and/or food. (a)(3)
- Pet owners are required to clean up their pet's excrement and properly dispose of it in a trash receptacle. (a)(5)
- In the John D. Rockefeller, Jr. Memorial Parkway, when accompanied by a hunter in possession of a valid Wyoming bird hunting license and who is engaged in hunting, dogs are allowed in vessels and in/on the waters of the Snake River for bird retrieval during waterfowl hunting seasons and are allowed off leashes on land during specified game bird seasons. (b)
- Pets may be kept by park residents under the terms and conditions established by the "Park Pet Policy". (e)

*The Superintendent has determined that domestic pets within the park under these conditions do not pose an undue threat to natural resources, employees or the visiting public.*

#### **§2.16(a) Horses and pack animals, designated animals**

- Designated pack animals are limited to horses, burros, mules and llamas. (a)

*The Superintendent has determined that the use of equine pack animals is a historical use within the park with limited impact on park resources but remains a significant benefit and visitor activity supported by the park. Goats are not permitted due the sensitivity of the local bighorn sheep population and the practice of "free trailing" pack strings.*

#### **§2.16(b) Horses and pack animals, designated trails, routes or areas**

- In the park, stock may be ridden off-trail in the following locations:
  - a. In the area identified as Baseline Flats and the Potholes defined as the Chapel of Transfiguration road on the south, north between the Snake River and Teton Park road to the east-west RKO road (just south of Signal Mountain)
  - b. East of the Snake River, north from the south park boundary to the confluence with the Buffalo Fork of the Snake River, then east along the Buffalo Fork to the eastern park boundary and south along the east boundary to the southern boundary that follows the Gros Ventre River.
  - c. To facilitate backcountry travel between:
    - a. Moose Basin Divide and Forellen Divide
    - b. Horsethief Pass and the Moose Basin patrol cabin
  - d. In the John D. Rockefeller, Jr. Memorial Parkway.
  - e. The use of stock off-trail for hunting and game retrieval is permitted during the elk reduction program in open areas of hunt areas 75 and 79.
- Stock use is prohibited on the following trails in the park and parkway:
  - a. The Rendezvous Mountain Trail from the park boundary west of the tram to the Middle Fork cutoff of the Granite Creek Trail.
  - b. The trail to Surprise and Amphitheater Lakes from the Valley Trail.

- c. The Hidden Falls foot trails between the Jenny Lake west shore boat dock and the junction of the designated horse trail west of Inspiration Point, except for the section between the southwest shore horse trail, east to the lower Cascade Creek bridge and directly north to the Cascade Canyon horse trail bypass junction.
- d. The trail on the east shore of Jenny Lake between the outlet of Jenny Lake and the junction of the designated horse trail north of the Jenny Lake overlook.
- e. The foot trail on the west shore of Jenny Lake between the west shore boat dock and the horse trail junction near Moose Ponds overlook.
- f. The Holly Lake trail from the Holly Lake hitch rail, past Holly Lake, to the Paintbrush Canyon trail.
- g. All trails within the Laurance S. Rockefeller Preserve; *except* that stock may be ridden on the Phelps Lake trail, on the north side of the lake, from the Wister Draw Trail junction west to Valley Trail and on the Kaufman Creek Trail.
- h. The Phelps Lake Loop Trail, except between the Death Canyon-Valley Trail Junction and the Wister Draw Trail junction AND southwest of the Death Canyon-Valley Trail Junction along the Valley Trail until it meets the Phelps Lake Loop Junction.
- i. Within the Laurance S. Rockefeller Preserve, the Woodland Trail, the Lake Creek Trail, the Aspen Ridge Trail, the Boulder Ridge Trail, the Phelps Lake Trail, the service access trail, and the trail leading from the parking lot to the junction of the Woodland and Lake Creek Trails.
- j. All winter routes designated for snowmobile travel and the snow covered portion of the Teton Park road, between Taggart Trailhead parking area and the Signal Mountain winter parking area; and the snow covered portion of the Moose-Wilson Road between Death Canyon road and the Granite Canyon trailhead.

*The Superintendent has determined that these permissions and limitations are necessary for the protection of the environmental values of the park, and avoidance of conflicts among visitor user groups, and are in conformity with the establishing legislation of the park and parkway.*

- Horses and/or pack animals may be ridden on the Elk Ranch and Wolff Ranch roads.

*The Superintendent has determined that riding stock on these roads is less impact to areas recovering from historic grazing use and will increase safety for riders and stock where there are no designated trails.*

- Free-trailing or loose-herding of horses or pack animals is authorized only when hazardous topography exists and loose herding for short distances is for safety of stock and riders.

*The Superintendent has determined that this activity is permitted only to protect equine animals and increase visitor safety.*

The following additional conditions are established for horse and pack animal use in the park and the parkway:

- Within the backcountry of the park and parkway (defined as further than 250-yards from a road, parking lot, or developed zone):
  - a. Private groups may have no more than 12 horse and pack animals (in combination) for day use.
  - b. Private groups with valid backcountry permits are limited to a total of 10 pack animals and/or riding stock.
  - c. Concession guided rides can have no more than 10 horses (excluding horses used by wranglers) or pack animals for overnight or day use.
  - d. Overnight livestock use is permitted only where hitch rails or corrals have been established. Picketing, hobbling, or tying livestock to the natural features; or in areas used for sleeping, cooking or within 100 feet of water sources is prohibited.
- Horses and pack animals are prohibited on the multi-use pathway, except for the Snake River bridge in Moose, the Cottonwood Creek Bridge, and the section of pathway between the Practice Rocks parking lot and Antelope Flats road to include the Ditch Creek Bridge.

*These use limitations incorporate conditions set forth in the 1990 Backcountry Management Plan and/or have been validated to prevent adverse impacts and use conflicts in multiple use areas.*

#### Livestock Grazing

- Livestock grazing is prohibited unless permitted as authorized under Title 36 CFR, Section 7.22(c).

#### Hay

- All hay and feed transported and/or used within the boundaries of Grand Teton National Park and the John D. Rockefeller, Jr. Memorial Parkway must be certified as weed free in compliance with Teton County Conservation District standards.
- All stock used in the park and parkway must only be fed certified hay/feed for the 24 hours that precede entering the parks.
- Processed feed must be packed in and used for all overnight stock trips. Hay may not be packed in or used for overnight trips.

#### Pack Animal Manure

- Horse manure shall be physically removed from paved areas, developed parking lots and Grassy Lake Road primitive campsites and disposed of in refuse dumpsters.

*The Superintendent has determined that these restrictions are necessary to prevent the introduction of exotic plant species and to protect and scenic values of the park.*

#### **§2.17(c)(1) Aircraft and air delivery, downed aircraft removal**

##### The procedures to remove any downed aircraft and/or component parts and wreckage are:

- The owners of the aircraft or their designated representatives must apply for and receive authorization for removal from the Superintendent.
- Once contacted, the Superintendent will designate the appropriate employee(s) to review the proposed removal operations. The review will include the following:
  - a. Past work histories of the organization(s) involved.
  - b. Proposed date, time, duration of the removal operation.
  - c. Possible impacts on park or parkway resources, facilities, visitor use and the personal safety of all parties involved.
- The Superintendent reserves the right to determine and assign as many park employees that he/she deems necessary in the removal plan/operations to insure compliance with the terms and conditions of the removal permit, safeguarding park resources, minimize environmental damage, and insure the personal safety of all parties involved.
- All additional costs associated with the assignment of park employees and/or equipment will be paid by the owners of the aircraft and not the National Park Service, except for normal costs associated with the administration and operation of the park and the parkway.

- The Superintendent may modify, stop, change; or require additional actions, equipment or personnel at any time during the removal operations based upon unforeseen circumstances. All additions and requirements to the removal plan/operations will be borne by the owner of the aircraft and not the National Park Service.

*The Superintendent has determined that these regulations are necessary for the protection of the environmental and scenic values of the park, and to protect the public safety.*

## **§2.20 Skating, skateboards, and similar devices**

- The following areas are designated for the use of roller skates, skateboards, roller skis, coasting vehicles, or similar devices:
  - a. The completed and paved multi-use pathway alongside Hwy 89 from the Gros Ventre River Bridge north to Antelope Flats Junction and from Moose Junction along the Teton Park Road to South Jenny Lake parking area., whenever it is predominately free of snow and ice. Use of the multi-use pathway is prohibited from ½ hour after sunset to ½ hour before sunrise.
  - b. Spring/Fall routes as defined below:
    - Beginning November 1 of each year, roller skating, skateboarding and similar activities may occur on roads placed in "Winter Road-Wheeled Access" status. This is applicable to the following roads:
      1. Moose-Wilson Road (between the locked gates at Granite Canyon parking area and the Death Canyon turnoff)
      2. Teton Park Road (between the locked gates at Taggart Lake parking area and Signal Mountain Lodge junction)
      3. Signal Mountain Summit Road (above the locked gate)
    - This winter road status remains in effect until the road surface becomes predominately snow and/or ice covered. The road status will then change to "Winter Road-Over Snow Access". Following the spring melt-out or when cleared of snow and ice the above routes will revert back into winter road status. The Superintendent will issue a public notice (in compliance with 36 CFR 1.7) when a road status changed to "Winter Road-Wheeled Access" or "Winter Road-Over Snow Access".
    - Administrative use of these roads can and will occur at all times of the year regardless of road status. Users should be aware that snow removal equipment, grooming equipment and other authorized vehicles may be present at any time of the year.

*Definition: "Winter Road—Wheeled Access" - paved and unpaved roads that are seasonally gated or posted as closed to public motorized travel but are predominately snow free and passable by wheeled vehicles. These roads typically close on November 1 of each year and are often open again by May 1. Allowable public travel under this designation includes walking, biking, rollerblading, etc. unless otherwise posted as closed to public entry. The Superintendent will determine the duration a road is in winter road status. Administrative travel may occur under these conditions.*

*Definition: "Winter Road-Over Snow Access" — paved and unpaved roads that are seasonally gated or posted as closed to public motorized travel that are predominately snow or ice covered and generally impassable to wheeled vehicles. Allowable over-snow public travel under this designation includes skiing, snowshoeing and walking unless otherwise posted as closed to public entry. Public vehicles, including bicycles, are prohibited under this designation. The Superintendent will determine when a winter road converts to over snow access. Administrative travel may occur under these conditions.*

*The Superintendent has determined that these regulations are necessary for the protection of life & safety; and to reduce potential conflicts between visitors and legal traffic movement.*

## **§2.21 Smoking**

- In accordance with Executive Order #13058 the smoking of tobacco products is prohibited within all interior spaces owned, rented, or leased by the federal government and in any outdoor areas within 25 feet of air intake ducts (including doors, windows, etc).

*As directed by Presidential Executive Order #13058, and in recognition of the health risks associated with "second-hand" smoke, the Superintendent has determined that this restriction is necessary for the public health and safety.*

## **§2.22(a)(2) Property, areas and conditions designated for longer time periods**

The following areas and/or conditions are designated for parking vehicles during periods of time that exceed 24-hours (a)(2):

- Visitors on backcountry trips may leave their vehicles unattended for the period authorized in their backcountry-use permit, in appropriate, designated parking areas.
- Short-term trailer parking: visitors may leave boats on trailers and empty trailers parked at designated public parking areas (Signal Mountain, Colter Bay and Leeks Marina) for not more than 72 hours,
- Grand Teton Lodge customer short-term parking: boat owners who are customers of the Grand Teton Lodge Company may park their boat trailers (loaded or empty) for the duration of their visit in the designated paved parking lot southeast of the Colter Bay Cabin office.
- Long-term parking: boat owners with slips & buoys may park empty trailers for the season on a first-come, first-serve basis in the parking lot at the base of the Signal Mountain Road. Grand Teton Lodge Company customers may park empty trailers in the unimproved long-term parking lot northeast of the Colter Bay Cabin office per terms of a permit issued by the Grand Teton Lodge company.

*The Superintendent has determined that leaving specified property unattended in excess of the prescribed time limit will not have a negative impact upon the park's natural resources.*

## **§2.23(c) Recreation Fees, periods when collection is suspended**

Park entrance fees are suspended on the following dates:

- Park entrance fees are suspended on days designated by the Secretary of Interior; however this suspension does not affect other park fees (boating, camping, special uses).

*The Superintendent, in support of the Director, encourages all people from the United States and other nations to visit and experience national parks. These days recognize the national park service mission, accomplishments and to encourage the national park experience.*

## **§2.35(a)(3)(i) Alcoholic beverages and controlled substances, closed areas**

The following buildings are closed to the possession and consumption of alcoholic beverages:

- All park visitor centers and official NPS offices, unless otherwise authorized by the Secretary of the Interior or their designee.

*This limitation is in accordance with Title 41 CFR 102-74.405 and Departmental Manual section 310.*

#### **§2.38(a) – Explosives, permitted use**

- Only administrative use of explosives is permitted (a).
- No permits allowing the use of fireworks are issued (b).

*The Superintendent has determined that the risk of wildland fire would be elevated and public safety compromised should the unregulated use of explosives or fireworks be permitted within the park.*

#### **§2.51(e) Public assemblies, meetings, designated areas**

The following areas are designated as appropriate for the issuance of a park permit allowing public assemblies of more than 25 people. Maps of these sites are available through the Chief Park Ranger or Superintendent's office (e).

- Colter Bay: the area near the southeast corner of the park visitor center, adjacent to the sidewalk and roadway.
- South Jenny Lake Area: between the southwest side of the Jenny Lake Store and the Southeast side of the Crandall Studio.
- Moose Administration Building: on the southeast side of the building, remaining on the grass, just north of the sidewalk that is adjacent to the parking lot and 20' east of the main entrance sidewalk.
- Flagg Ranch Resort Contact Station: the area that is just north of the Contact Station.
- Craig Thomas Discovery and Visitor Center: the southeast side of the cement walkway intersection where the primary walkway turns right to enter the courtyard.
- Other areas may be designated on a temporary basis if it is determined by the Superintendent that public safety cannot be met utilizing one of the above designations.

### **PART 3 - BOATING AND WATER USE ACTIVITIES**

#### **§3.3 Vessel Permits**

- An annual cost recovery fee permit is required to use vessels on waters in the park and the parkway. Windsurfing boards and stand-up paddleboards are included within this requirement. Inner tubes, air mattresses, kick boards, and similar individual fishing/swimming floatation devices are *exempt* from this permit requirement. (Also see section 1.5 regarding windsurfing and Title 36 CFR section 1.4 *Definitions- Vessel*)

*The Superintendent has determined that for public safety, protection of park resources, weather and park management objectives that the requiring a boat permit for the launching and use a vessel within the park and parkway is necessary to adequately regulate park uses, properly inform users of park regulations, and reduce potential conflicts between user groups.*

#### **§3.7(b) Personal flotation devices, required wearing of**

- River passengers and crew members on commercial float, fishing, and scenic boats are required to wear Personal Floatation Devices (PFD's) as prescribed within the operating plans for the respective companies.

#### **§3.8(a)(2) Vessel Operations, designated vessel launching sites**

The following sites are designated as vessel launching sites:

- Motorized vessels – Jenny and Jackson Lakes
  - a. Jenny Lake launch ramp (all vessels, developed ramp)
  - b. Spalding Bay (all vessels, undeveloped ramp)
  - c. Signal Mountain launch ramp (all vessels, developed ramp)
  - d. Colter Bay launch ramp (all vessels, developed ramp)
  - e. Leek's Marina launch ramp (all vessels, developed ramp)
  - f. Lizard Creek campground (hand carried vessels only, undeveloped ramp)
- Non-motorized vessels are allowed on Jackson, Jenny, Phelps, Emma Matilda, Two-Ocean, Taggart, Bradley, Bearpaw, Leigh, and String Lakes. (7.22(e)(2))
  - a. Specific launch sites are not designated at these lakes, boaters may carry hand-propelled vessels to shoreline points where launching is convenient unless otherwise posted.
- Non-motorized vessels – Snake River
  - a. Flagg Canyon (South Gate) launch ramp (John D. Rockefeller, Jr. Memorial Parkway / semi-developed)
  - b. Flagg Ranch (Snake River bridge) launch ramp (John D. Rockefeller, Jr. Memorial Parkway / semi-developed)
  - c. Jackson Lake dam parking area (1,000-feet downstream of the dam, semi-developed)
  - d. Cattleman's bridge (semi-developed)
  - e. Oxbow Bend (undeveloped)
  - f. Pacific Creek launch ramp, (semi-developed)
  - g. Deadman's Bar launch ramp (semi-developed)
  - h. Moose launch ramp (developed)
  - i. Schwabacher Landing (during high water, undeveloped)



*Developed ramp indicates trailer access to the water (paved and unpaved), paved ramp, semi developed indicates some level of access but may not allow for a trailer to be driven into the water, undeveloped indicates a need to hand carry a vessel to the water.*

### §3.12(a) Water skiing, designated areas

- Water skiing and other types of towing behind vessels is only permitted on Jackson Lake.

### §3.12(b) Towing, parasail, hang-glider or other airborne device

- Permits are not issued for the purposes of towing persons using a parasail, hang-gliders or other airborne devices on any body of water within the park.

*The Superintendent has determined that these public use limitations are necessary to maintain public safety and to protect recreational values such as scenic and natural soundscapes in other park areas. Parasailing is prohibited in view of the large number of raptors nesting along the shoreline of Jackson Lake that also depend upon the lake and open space for hunting.*

### **§3.17(a) Swimming and wading, designated areas**

- Swimming is permitted or restricted as follows:
  - a. Swimming beaches are designated at Colter Bay (adjacent to the Colter Bay picnic area) and Signal Mountain (adjacent to the Signal Mountain campground/picnic area).
  - b. Swimming is prohibited within marinas and boat mooring areas on Jenny and Jackson Lake.
  - c. In the John D. Rockefeller, Jr. Memorial Parkway, the swimming in, bathing in, or entry into a natural, historical or archaeological thermal pool or stream that has waters originating entirely from a thermal spring or pool is prohibited (§ 1.5(a)(1) – Public Use Limits). Swimming, soaking or bathing in adjacent overflow or run-off pools or streams is allowed. Alteration or disturbance of any water course from its natural state by damming, diverting, digging, or by any other means is prohibited for any purpose.
  - d. In Grand Teton National Park, swimming is permitted in thermal springs or originating water sources.
  - e. All other park and parkway waters are open to swimming and wading.

*The Superintendent has determined that these restrictions are necessary to maintain public safety and resource protection while the public engages in water-based recreational activities.*

### **§3.18(a) Snorkeling and underwater diving, designated areas**

- Snorkeling and underwater diving are allowed *only* in Jackson and Jenny Lakes *and* within existing limitations on swimming in those two lakes.

*The Superintendent has determined that this restriction is necessary to maintain the public safety.*

### **§3.19 Submersibles**

- The recreational use of submersibles is not permitted.

*The Superintendent has determined that this limitation is necessary to protect park resources, prevent conflicting uses, and promote park safety.*

## **PART 4 – VEHICLE AND TRAFFIC SAFETY**

### **§4.10(a) Travel on park roads and designated routes, off-road vehicle use**

- There are no designated areas or routes for off-road vehicles within the park or parkway (a).

*The Superintendent has determined that the recreational use of off-road vehicles is an incompatible use within the park mission, would impair park resources and conflict with other park uses.*

### **§4.10(c)(1) Travel on park roads and designated routes, tracked vehicles' designated routes**

- Approved utility companies may utilize tracked over snow vehicles as necessary to service utility lines and equipment sites within their assigned right of way (c)(1).

*Rights of way within the park are often located away from transportation corridors and the Superintendent has determined that allowing the use of tracked vehicles is necessary for the safety of utility company employees and will assist the park through more rapid repairs.*

#### **§4.11(a) Load, weight and size limits, established conditions**

The following load, weight and size limits apply to vehicles within the park (a):

- Operating the following vehicles is prohibited on the Moose-Wilson Road unless under the terms of a concession permit or by private landowners whose only property access is off the Moose-Wilson Road:
  - a. All vehicles more than 100 inches wide, measured at its widest point.
  - b. All vehicles more than 280 inches long, measured at its longest point.
  - c. Any vehicle towing another vehicle or trailer regardless of either vehicle's size; except for horse trailers entering through Granite Canyon Entrance Station and travelling no further north than Granite Canyon trailhead or entering from Moose and travelling no further south than the Death Canyon road junction.
  - d. Service and delivery vehicles (except for servicing addresses on the Moose-Wilson Road).
- Concession/commercial scenic float and fishing boat trailers are not allowed on Teton Park Road without prior permission from the Business Resource Office.
- All vehicles more than 100 inches wide, measured at its widest point, and/or more than 280 inches long, measured at its longest point are prohibited on the Murie Ranch access road unless under the terms of a concession permit or required by The Murie Center for the purposes of operation/maintenance of the facility.

*The Superintendent has determined that these restrictions are necessary to promote traffic safety.*

#### **§4.21(b) Speed limits, designated limits**

The following speed limits are established:

- 15-MPH
  - a. Within 100-feet of any entrance station.
  - b. All park and concession housing areas.
- 25-MPH
  - a. The Teton Park road from the junction with Highway 89 to within 100-feet of the Moose Entrance station.
  - b. The Moose-Wilson road north from the Granite Creek bridge to the northern edge of Saw Mill Ponds.
  - c. The Jenny Lake Loop one-way road.
  - d. The Signal Mountain road from the intersection with the Teton Park road to the summit.
  - e. The Grassy Lake road west from the intersection with the North Park road (Highway 89) to the park boundary.
- 30-MPH
  - a. The Teton Park Road between the posted signs from approximately Beaver Creek to approximately Cottonwood Creek.
  - b. US Route 89 in the vicinity of Colter Bay Junction between the posted signs.
- 35-MPH
  - a. The Gros Ventre Road north of Kelly to the East Boundary Road junction and north to Shadow Mountain.
  - b. The Gros Ventre Road from the East Boundary Road to the East Boundary.

c. US Route 89 from south of Oxbow Bend Pullout to north of Jackson Lake Lodge Junction.

- 55-MPH

- a. U.S. Routes 89, 191, and 26, which are collectively and commonly known as "The Outside Highway", except at "Moose Alley" and the Gros Ventre riparian corridor where speeds are reduced to 45-mph by posting of appropriate signs.
- b. U.S. Routes 89, 191, and 26, are posted 45 mph night time speed limit. Night time speed limit is defined as ½ hour before official sunrise and ½ hour after official sunset.

The Superintendent may designate and post lower speed limits than those listed on a temporary basis without further public notice for short-term public safety or resource protection.

*The Superintendent has determined that these restrictions are necessary to promote traffic and visitor safety with more than 1.5 million vehicles in the park annually, reduce wildlife mortalities caused by vehicular collisions, and to prevent further deterioration of the road surface.*

Over the snow travel speed limit

- The maximum speed limit for all over-snow vehicles being operated on routes / areas designated through Title 36 CFR, Section 7 is 35 mph or as otherwise posted at intersections.

*The Superintendent has determined that these restrictions are necessary to promote winter users safety, to preserve the environmental and scenic value of the park, and to avoid conflicts in visitor use.*

**§4.30(a) Bicycles, designated routes**

- The following areas are designated for the use of bicycles and/or similar devices:
  - a. Roadways and parking areas open to public motor vehicle use.
  - b. The completed and paved multi-use pathway alongside Hwy 89 from the Gros Ventre River Bridge north to Antelope Flats Junction and from Moose Junction along the Teton Park Road to the South Jenny Lake parking area, whenever it is predominately free of snow and ice. Bicycle use on the multi-use pathway is prohibited from ½ hour after sunset to ½ hour before sunrise.
  - c. Spring/Fall routes as defined below:
    - Beginning November 1 of each year, public bicycling and similar activities may occur on roads placed in "Winter Road-Wheeled Access" status. This is applicable to the following roads:
      1. Moose-Wilson Road (between the locked gates at Granite Canyon parking area and the Death Canyon turnoff)
      2. Teton Park Road (between the locked gates at Taggart Lake parking area and Signal Mountain Lodge junction)
      3. Signal Mountain Summit Road (above the locked gate)
    - This winter road status remains in effect until the road surface becomes predominately snow and/or ice covered. The road status will then change to "Winter Road-Over Snow Access". Following the spring melt-out or when cleared of snow and ice the above routes will revert back into winter road

status. The Superintendent will issue a public notice (in compliance with 36 CFR 1.7) when a road status changed to "Winter Road-Wheeled Access" or "Winter Road-Over Snow Access".

- During periods of winter road status cyclists are permitted to operate bicycles abreast of one another.
- Administrative use of these roads can and will occur at all times of the year regardless of road status. Users should be aware that snow removal equipment, grooming equipment and other authorized vehicles may be present at any time of the year.

*Definition: "Winter Road—Wheeled Access" - paved and unpaved roads that are seasonally gated or posted as closed to public motorized travel but are predominately snow free and passable by wheeled vehicles. These roads typically close on November 1 of each year and are often open again by May 1. Allowable public travel under this designation includes walking, biking, rollerblading, etc. unless otherwise posted as closed to public entry. The Superintendent will determine the duration a road is in winter road status. Administrative travel may occur under these conditions.*

*Definition: "Winter Road-Over Snow Access" — paved and unpaved roads that are seasonally gated or posted as closed to public motorized travel that are predominately snow or ice covered and generally impassable to wheeled vehicles. Allowable over-snow public travel under this designation includes skiing, snowshoeing and walking unless otherwise posted as closed to public entry. Public vehicles, including bicycles, are prohibited under this designation. The Superintendent will determine when a winter road converts to over snow access. Administrative travel may occur under these conditions.*

*The Superintendent has determined that these regulations and restrictions are necessary for the protection of the environmental and scenic values of the park, and to protect the public safety.*

#### **§4.31 Hitchhiking**

Hitchhiking or reasonably soliciting transportation shall be permitted within Grand Teton National Park and John D. Rockefeller, Jr. Memorial Parkway EXCEPT:

- Within two tenths of a mile (0.2mi) of an entrance station
- Within 200 feet of a park service office building or visitor center.
- While holding or having a sign that is larger than 2'x2' in size.
- The hitchhiker must stay off of the driving lane of a paved roadway that has a white fog line and off the surface of a paved roadway that does not have a white fog line, though a hitchhiker may stand on pavement in a paved pullout.
- Where vehicles may not safely pull off of the main traffic lane into a pullout or safely onto the shoulder to allow for the passengers to be received safely.
- During the hours of darkness unless the hitchhiker is wearing bright (preferably reflectively enhanced) clothing.
- When hitchhiking behavior is deemed unsafe or a nuisance by a commissioned law enforcement ranger.

## INDEX

4 Lazy F Ranch	5, 9, 23
Administrative Areas	3, 5, 6, 15, 27, 35
Aircraft / Air Delivery	7-8, 15, 26-27, 31
Alcoholic beverages	28-29
Ashes	16
Audio Disturbances	15, 17, 22
Bear Spray	13-14
Bicycle	6, 27, 34-35
Boating	4, 8, 15, 20, 28, 29-31
Boats (see Vessels)	
Campfires (See also Fires)	15-16, 20, 22-23
Camping	3, 15-16, 18, 19-23, 26, 28, 30, 32
Carcasses	8, 18-19
Closures, Area	3-13
Closures, Public Use	7-13, 19
Closures, Road	5-7, 12
Controlled substances	3, 28
Commercial Activity	3, 15-16, 18-19, 29, 33
Commercial Vehicles	3, 15, 33
Dams	8, 12, 30
Diving	32
Drones (see Unmanned aircraft)	
Drug Free Zone	3
Elk Reduction Program	6, 11, 15, 17, 19-20, 22, 24
Explosives	29
Fees (see also Recreation fees)	3, 23, 28, 29
Fires (see also Campfires)	15-16, 20, 22-23
Firewood	16-17
Fireworks	29
Fishing	4, 8, 19, 22
Flotation Devices	8, 29
Food Storage	21-22
Grazing	5, 15, 25-26
Gyroscopically controlled devices	4
Hay	26
Hitchhiking	35
Horses (see Pack animals, Stock)	
Hours	3
Human waste (see Refuse)	23
Hunting	17-20, 24
Hunting, transporting taken wildlife	17-19, 24
Hunting, retrieval routes	17-19, 24
Idling	3

Jackson Lake	3, 5, 8, 12-14, 16, 19-23, 30-32, 34
John D. Rockefeller, Jr. Memorial Parkway	3, 5-8, 13-14, 16-26, 29-32, 35
Kite-skiing	14
Laurance S. Rockefeller Preserve	4-5, 25
Livestock (see also Stock and Grazing)	25, 26
Mobility disabilities	4
Moose-Wilson Road	4, 6, 23, 25, 27, 33, 34
Multi-Use Pathway	3, 23, 25, 27, 34
Off-road vehicle use	32
Pack animals (see also Stock)	15, 24-26
Pathway	3, 23, 25, 27, 34
Parasailing (see also Air Delivery)	16, 31
Parking	3-6, 12-14, 19, 23, 25-30, 34
Patrol cabins (see Administrative Areas)	
Permits	4, 5, 8-10, 15-23, 25-26, 28-29, 31, 33
Personal flotation devices (see Vessels, personal flotation devices)	29
Pets	23-24
Picnicking	3, 16, 21-23, 32
Printed matter Sale/Distribution	15
Public Assembly	14, 16, 29
Recreation fees	3, 23, 28, 29
Refuse	16, 23, 26
Residential	3, 6, 21-23
Residing on Federal Land	16
Roller Skating	27, 35
Sanitation	16, 23
Scattering Ashes	16
Segways (see Gyroscopically controlled devices)	
Signal Mountain	5-6, 20, 22, 24-25, 27-34
Skateboards	27
Smoking	28
Snowmobiles	6, 14
Snorkeling	32
Speed Limits	4, 33-34
Special Events	16
Specimen Collection	16
Spotlighting	19
Stock (see also Pack animals)	15, 24-26
Storage areas	5
Submersibles	32
Swimming	3, 7-8, 14, 29, 32
Thermal springs/pools	7, 8, 32
Towing	16, 31, 33

Tracked Vehicles	32
Triangle X Ranch	6
Unmanned aircraft	7-8
Vehicle Limits	16, 33
Vessels	4, 5, 16, 18, 20, 23-24, 29-31
Vessels, recovery of sunken	16
Vessels, launching sites	29-31
Visiting Hours	3
Wading (see Swimming)	
Water skiing	31
Weapons	16
Wildlife	3-13, 16-19, 21-22, 24, 34
Wildlife, bears	3, 4, 6, 8, 13-14, 21-22
Wildlife, birds	4, 10, 24
Wildlife, elk	4, 6, 10-11, 13, 15, 17-20, 22, 24
Wildlife, moose	4, 17-19
Wildlife, wolves	4, 11, 13
Windsurfing boards (see Vessels)	5, 29