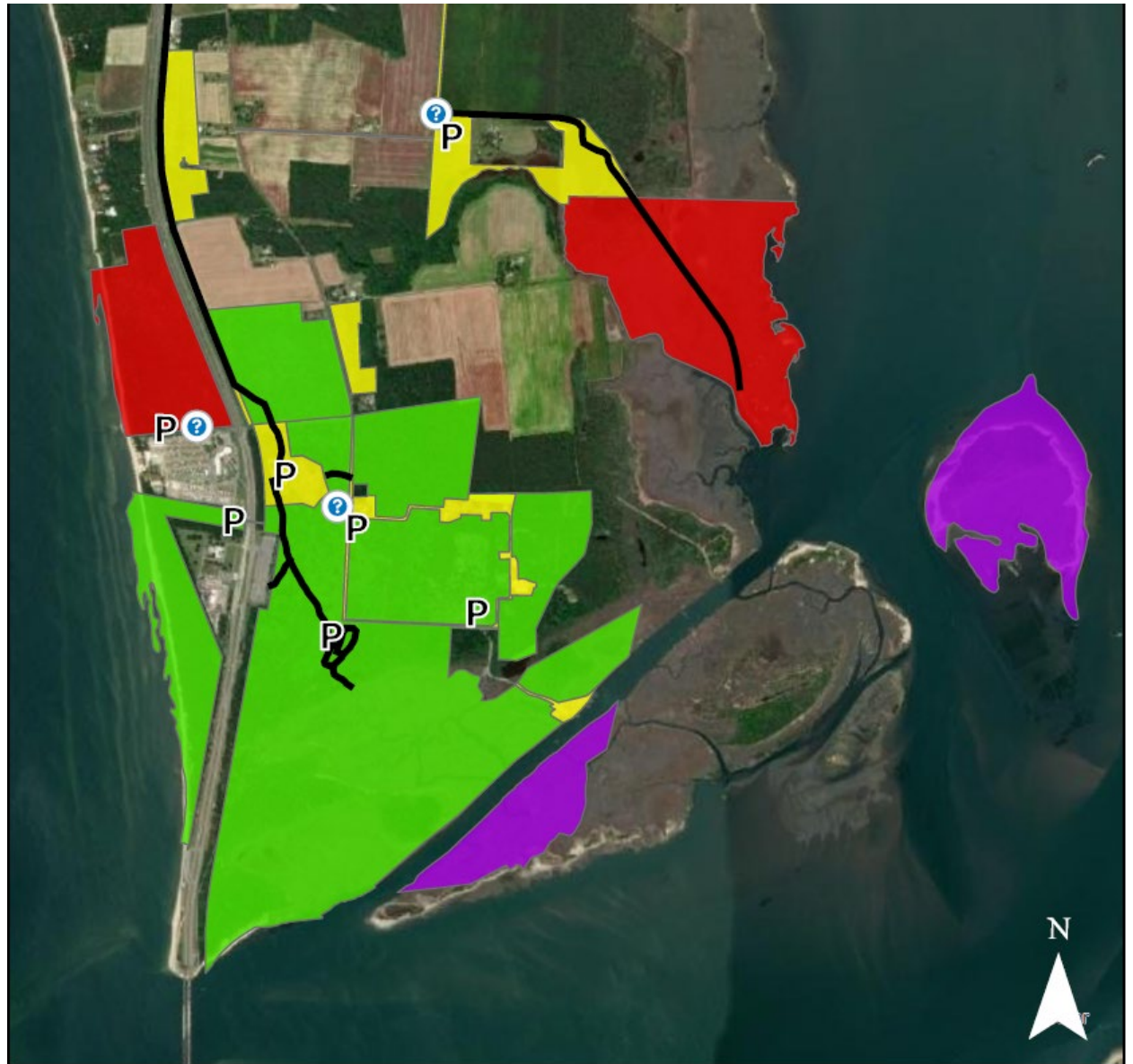


Hunting Area Map 2022/23

Eastern Shore of Virginia National Wildlife Refuge

Legend

| | |
|---|---|
| | Archery Only Area White tailed deer, opossum, raccoon, fox, coyote |
| | General Hunt Area White tailed deer, opossum, raccoon, fox, coyote, rabbit, squirrel, quail, waterfowl (ducks, geese, brant, swan and mergansers), rail, snipe, gallinule/moorhen, coot, woodcock, dove, crow |
| | Migratory Game Bird Only Area Waterfowl (ducks, geese, brant, swan and mergansers), rail, snipe, gallinule/moorhen, coot, woodcock, dove, crow |
| | No Hunting Zone |
| ? | Information |
| — | Public Trails |
| P | Parking |



General Information

Hunt Dates

- Hunting is allowed for each species only during State season dates that fall between September 1, 2022 and February 28, 2023. Consult State regulations for specific species season(s).
- No hunting on Sundays except for waterfowl (ducks, coot, geese, brant, and swan) and rails (including gallinules and moorhens)

Hunt Hours

No night hunting, otherwise in accordance with state law. We allow hunters to access the refuge 2 hours prior to sunrise and must exit the refuge no later than 2 hours after sunset.

Bag Limits

In accordance with state law.

General Regulations

We allow hunting, of the species listed for each designated hunt area on the refuge (see the attached map), in accordance with State law subject to the following federal regulations:

1. We allow holders of a signed hunt brochure to access areas of the refuge typically closed to the non-hunting public. All members of a hunt party must possess a refuge hunt permit and be actively engaged in hunting. We allow an exception for those persons aiding a disabled person who possesses a valid State-issued Commonwealth of Virginia Disabled Resident Lifetime License or Commonwealth of Virginia Resident Disabled Veteran's Lifetime License.
2. The taking of game with firearms or muzzleloaders is not allowed in the Archery Only Area (green area on map).
3. Method of take in other areas (Red and Purple areas on map) is in accordance with state regulations.
4. The hunting of Turkey is not allowed on the refuge.
5. Refuge hunt areas adjoin private and other lands not owned or managed by the Service. It is the hunter's responsibility to know where they are hunting.
6. The refuge requires the use of non-toxic

ammunition for all hunting except for White tailed deer.

7. Skidmore and Raccoon Islands are accessible only by boat. You may park your vehicle at the Wise Point Boat Ramp area provided a boat ramp/parking pass is obtained. Parking is limited to first come - first served, obtaining a pass does not guarantee parking will be available.
8. No hunting within 100 feet (30.5 meters) of any building, road, or trail, whether improved or unimproved.
9. No hunting in "No Hunting Zone", (See map).
10. You must park your vehicle in designated parking sites (See map).
11. We prohibit the use of game cameras and the use of trail flagging/markers.
12. We allow the use of portable blinds/tree stands and require removal of the blinds/stands daily.
13. We allow the use of dogs consistent with State and Northampton County regulations only in the General Hunt and Migratory Game Bird Only Hunt Areas.
14. We prohibit organized deer drives. We define a "deer drive" as an organized or planned effort to pursue, drive, chase, or otherwise frighten or cause deer to move in the direction of any person(s) who is part of the organized or planned hunt and known to be waiting for the deer.
15. Areas of the refuge may need to close for management purposes, or other hazardous conditions that pose a threat to human health and safety. Such closures will be posted at the hunt information station.

Hunters With Disabilities

Please contact the hunt coordinator for additional information at 757/336 6122 x2308

Permits

PRINT, SIGN BELOW AND RETAIN A COPY OF THIS BROCHURE, WHICH SERVES AS YOUR HUNT PERMIT IN THE FIELD. You must maintain the permit on your person while hunting on the refuge. You do not need to submit a copy to the refuge.

By signing below I acknowledge that I have read and understand the refuge hunt regulations and agree to abide by the regulations governing hunting on the refuge.

Hunter Name - Printed

Hunter Signature

Parent/Guardian Name Printed
(Required for hunters less than 16 years old)

Parent/Guardian Signature

Eastern Shore of Virginia National Wildlife Refuge
5003 Hallett Circle
Cape Charles, VA 23310
757/331 2760
www.fws.gov/refuge/Eastern-Shore-Virginia

Federal Relay Service for the deaf and hard-of-hearing
1 800/ 877 8339 TDD/ 1 800/828 1140 voice.

U.S. Fish & Wildlife Service
1 800 344 WILD
<http://www.fws.gov>

September 2022

