

# Boating to Dungeness National Wildlife Refuge

## Cline Spit Clallam County Boat Launch

You are at Cline Spit. From here you can see Dungeness Spit which is within the Dungeness National Wildlife Refuge.

**There is no access to the Refuge by foot from this location.**

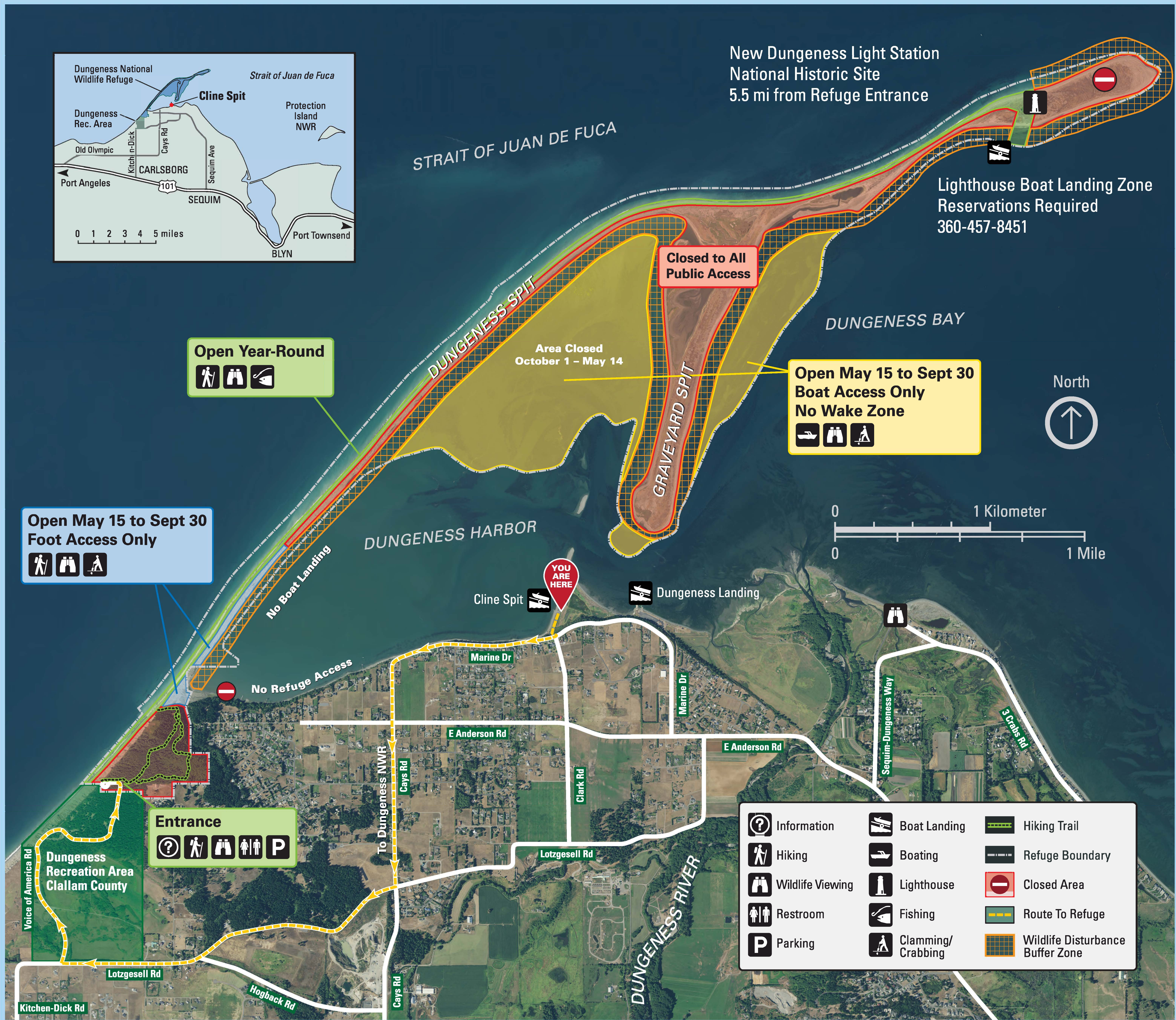
Boat landing on the Refuge is permitted only at the New Dungeness Light Station 9:00 a.m. – 5:00 p.m.

Advanced reservations are required to land at the lighthouse by calling 360-457-8451. All other shoreline access within the Refuge is closed to all watercraft which must remain 100 yards from shore to reduce wildlife disturbance.

All other Refuge land access is via the entrance located at 600 Voice of America Road, 4 1/2 miles to the west.

### Warnings

- From Cline Spit the Refuge is only accessible by boat. There is no foot access from this location.
- Check tides and weather before launching. Conditions can change rapidly.
- All watercraft must remain 100 yards from shore.
- Reservations are required for lighthouse landing.
- Respect No Wake Zones.
- Yellow zones are closed October 1 through May 14.
- No kiteboarding or windsurfing in the No Wake Zones.



New Dungeness Light Station  
National Historic Site  
5.5 mi from Refuge Entrance

Lighthouse Boat Landing Zone  
Reservations Required  
360-457-8451

Closed to All  
Public Access

Area Closed  
October 1 – May 14

Open May 15 to Sept 30  
Boat Access Only  
No Wake Zone

Open Year-Round

Open May 15 to Sept 30  
Foot Access Only

Entrance

	Information		Boat Landing		Hiking Trail
	Hiking		Boating		Refuge Boundary
	Wildlife Viewing		Lighthouse		Closed Area
	Restroom		Fishing		Route To Refuge
	Parking		Clamming/ Crabbing		Wildlife Disturbance Buffer Zone